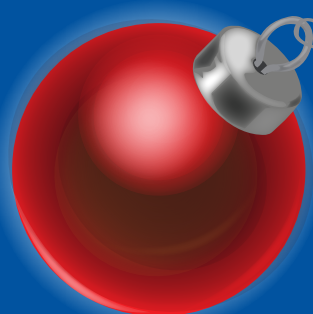




# EASTMAN®

please specify sale code when ordering  
**PBW928**  
valid thru  
12/1/15 - 12/31/15



# FREE GIFT MONTH

## Customer Appreciation Time!

\*See page 3 for more details

### FREE with \$1,500 Order!



MyCharge® Razor Ultra®

### FREE with \$3,000 Order!



Garmin® VivoSmart®

### FREE with \$6,000 Order!



Amazon Fire® HD 10 Tablet

### FREE with \$10,000 Order!



Your Choice:  
Sony Playstation® 4 or Microsoft® Surface 3 Tablet

### FROST FREE SILL COCK W/ VACUUM BREAKER

- Heavy brass construction
- Notched
- MHT outlet
- 1/2" MIP x 1/2" CxL
- Large wheel handle



Save Up To **25%**



**EASTMAN.**

## \$9.88

PART#	DESCRIPTION	ORDER QTY.	CASE QTY.	PRICE
80226	6" Length	2	24	9.88
80227	10" Length	2	24	11.50
80228	12" Length	2	24	12.75

### STAINLESS STEEL CORRUGATED WATER HEATER CONNECTOR - 3/4" FIP X 3/4" FIP

**NEW**

- Corrugated stainless steel
- Nickel-plated brass nuts
- Nitrile rubber sealing washer



Wow! **27% Off**

**EASTMAN.**

## \$2.95

PART#	DESCRIPTION	ORDER QTY.	CASE QTY.	PRICE
0437018	18"	1	25	2.95

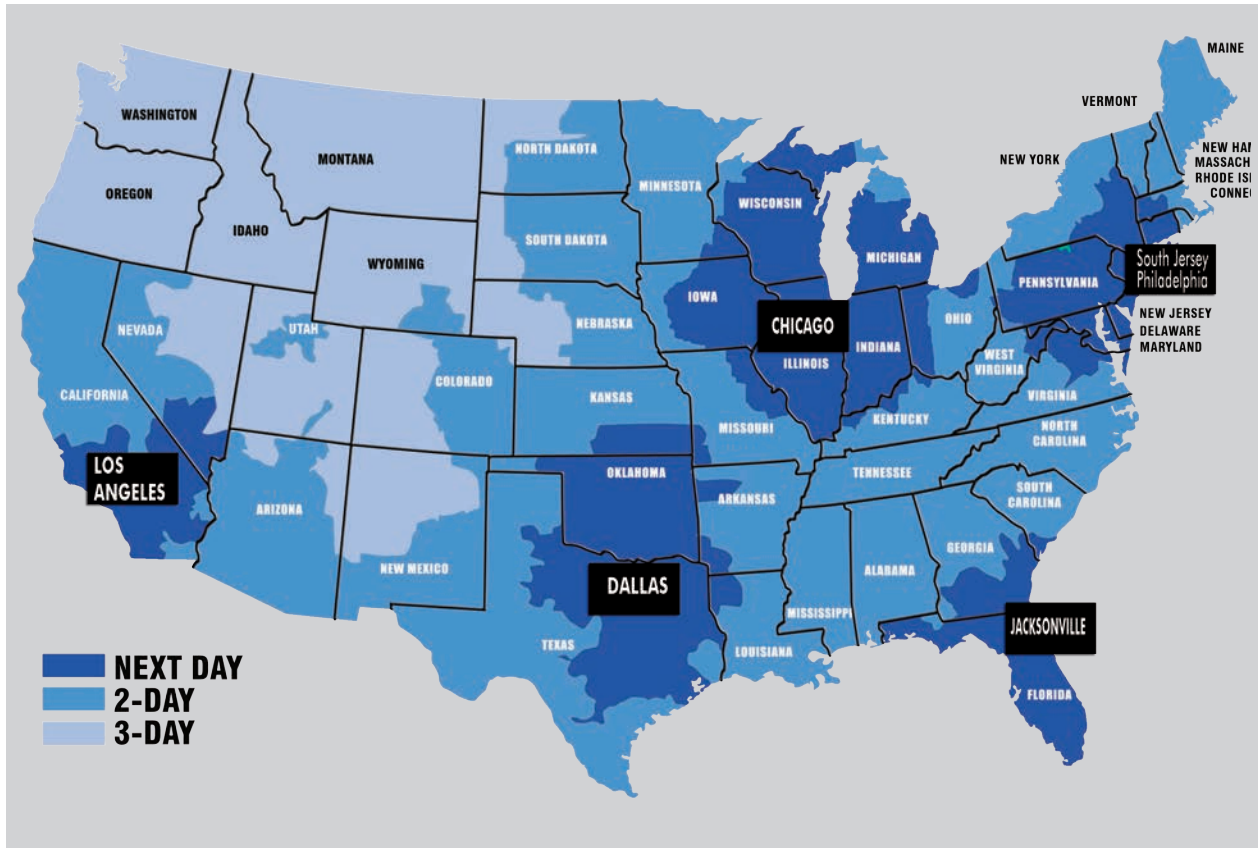
# FREE FREIGHT ON ALL ORDERS OVER \$900

## **SAME DAY SHIPPING\***

Same day shipping on orders placed by 2:00 PM.\* All International orders are shipped within 7 business days. OEM and certain designated accounts are shipped within 3 business days. Speak with your representative for more details.

## **NEXT DAY DELIVERY SERVICE**

Now with 5 strategic distribution centers across the USA along w/ same-day shipping, a majority of customers will receive their orders the next day.



Above delivery times based on orders shipped UPS or Fed-Ex ground

**PHONE:**  
800-486-5256



**FAX:**  
866-827-3012



**ONLINE:**  
[www.ez-flo.net](http://www.ez-flo.net)



# FREE GADGETS!\*

## MyCharge® Razor Ultra® Portable Battery Charger



**FREE with \$1,500 Order!**

- Power 2 devices simultaneously while on the go
- 90 extra hours of power can last an entire weekend away
- Works with Apple and Android smartphones and tablets
- Small and lightweight
- Powerbank recharges 50% faster than other devices
- Includes 2.1A adaptor and charger
- Table & phone sold separately

## Garmin® VivoSmart® Activity Tracker Black



**FREE with \$3,000 Order!**

- 24/7 wearability constantly follows your progress
- Wear for 7 days without charging
- Displays steps, calories, distance and time of day
- Vibration alerts for calls, texts and emails from your smartphone
- Easy operation using touch and swipe
- Personalize your daily goals to keep you active
- Waterproof
- Choose Small (5-6.75 in) or Large (6-8.7 in) wristband

## Amazon Fire® HD 10 Tablet



**FREE with \$6,000 Order!**

- ALL NEW tablet is larger, lighter and thinnest Fire yet
- Crisp, clear widescreen 10.1" HD display
- Rear-facing 5 MP camera and front-facing HD camera
- Enjoy more than 38 million movies, TV shows, songs, books, apps and games
- Up to 8 hours of usage between charges
- Stay connected with fast web browsing, email and calendar support

## Your Choice Sony® Playstation 4 or Microsoft® Surface 3 Tablet - 64 GB



**FREE with \$10,000 Order!**

### Microsoft® Surface 3 Tablet - 64 GB

- The tablet that can replace your laptop
- Beautiful 10.8" display and integrated kickstand for hands-free entertainment
- Comes standard with Windows 10 and Office (not included)
- Full-size USB port connects easily to accessories

### Sony® Playstation 4

- One of the top-rated gaming systems of 2015
- PS4™ puts gamers first with a connected gaming community
- Over 180 immersive games available

\*Gift disclaimer: Gift ships within 2 to 6 weeks of order. Limit 1 per customer regardless of number of orders. EZ-Flo International Inc.® reserves the right to substitute gift of equal value. Must purchase item from this flyer to qualify.



## "P" TRAP

- Less trap adapter
- Polypropylene

**\$0.77**

PART#	DESCRIPTION	ORDER		PRICE
		QTY.	QTY.	
35375	1-1/2" & 1-1/2" to 1-1/4" Reducing Washer White	25	50	<b>0.77</b>
35374	1-1/4" White	25	100	<b>0.93</b>
35314	1-1/2" Black	25	50	<b>0.97</b>
35377	1-1/4" Black	25	100	<b>1.32</b>

## 1-1/2" CENTER OUTLET

- Kitchen sink end ste outlet w/baffle in tee
- Polypropylene
- 1-1/2" X 16"



**\$1.85**

PART#	DESCRIPTION	ORDER		PRICE
		QTY.	QTY.	
35393	S/J Connect - White	25	50	<b>1.85</b>
35394	Direct Connect - White	25	50	<b>1.85</b>
35319	S/J Connect - Black	25	50	<b>2.04</b>
35320	Direct Connect - Black	25	50	<b>2.04</b>

## 1-1/2" FLANGED TAILPIECE

- Polypropylene



**\$0.36**

PART#	DESCRIPTION	ORDER		PRICE
		QTY.	QTY.	
35349	1-1/2" x 4" White	25	200	<b>0.36</b>
35350	1-1/2" x 6" White	25	200	<b>0.39</b>
35351	1-1/2" x 8" White	25	200	<b>0.37</b>
35352	1-1/2" x 12" White	25	200	<b>0.50</b>
35327	1-1/2" x 8" Black	25	100	<b>0.37</b>

## "P" TRAP W/ ADAPTER

- Includes trap adapter 1-1/2" x 1-1/4" and 1-1/2" washers
- Polypropylene

**\$0.89**

PART#	DESCRIPTION	ORDER QTY.	CASE QTY.	PRICE
35376	1-1/2" White	25	50	<b>0.89</b>
35313	1-1/2" Black	25	50	<b>0.89</b>



## 1-1/2" DISPOSER KIT

- End outlet w/baffle
- Includes disposer hush cushion and 6" tailpiece
- Polypropylene
- 1-1/2" x 16"



**\$1.90**

PART#	DESCRIPTION	ORDER QTY.	CASE QTY.	PRICE
35398	White	25	100	<b>1.90</b>
35322	Black	25	100	<b>2.06</b>

## 1-1/2" DOUBLE FLANGED TAILPIECE

- Polypropylene
- 1-1/2" x 16"



**\$0.69**

PART#	DESCRIPTION	ORDER QTY.	CASE QTY.	PRICE
35354	White	25	100	<b>0.69</b>
35324	Black	25	100	<b>0.69</b>

**EASTMAN.**

ORDER QTY.	CASE QTY.	PRICE
25	50	<b>0.89</b>
25	50	<b>0.89</b>



## 1-1/2" END OUTLET WITH DISHWASHER CONNECTION

- Kitchen sink end waste outlet with 7/8" OD branch tailpiece
- Adjustable from 11" to 16"
- 1-1/2" Slip joint connections
- Polypropylene



**\$2.07**

PART#	DESCRIPTION	ORDER QTY.	CASE QTY.	PRICE
35384	1-1/2"	25	1	<b>2.07</b>

## 1-1/2" BRANCH TAILPIECE

- 7/8" OD barb outlet
- Branch tail piece for dishwasher installation
- With captive nut
- Polypropylene
- 1-1/2" x 8"



**\$0.73**

PART#	DESCRIPTION	ORDER QTY.	CASE QTY.	PRICE
35312	S/J Connect - White	25	100	<b>0.73</b>
35358	Direct Connect - White	25	100	<b>0.84</b>
35329	S/J Connect - Black	25	100	<b>1.35</b>
35328	Direct Connect - Black	25	100	<b>1.35</b>

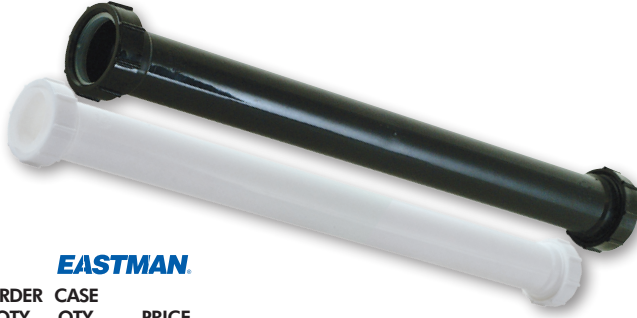
**\$0.73**

**EASTMAN.**



## DOUBLE END EXTENSION TUBE

- Polypropylene
- 1-1/2" x 16"
- Slip joint connection



**\$0.89**

**EASTMAN.**

PART#	DESCRIPTION	ORDER QTY.	CASE QTY.	PRICE
35330	White	25	100	<b>0.89</b>
35325	Black	25	100	<b>0.89</b>

## EXTENSION TUBE W/NUT

- White polypropylene
- Slip joint connection



**\$0.70**

**EASTMAN.**

PART#	DESCRIPTION	ORDER QTY.	CASE QTY.	PRICE
35361	1-1/2" x 8"	25	100	<b>0.70</b>
35362	1-1/2" x 12"	25	100	<b>0.85</b>
35360	1-1/4" x 6"	25	100	<b>0.60</b>

## 1-1/2" DISPOSER ELBOW

- Fits InSinkErator®
- White polypropylene



**\$0.59**

**EASTMAN.**

PART#	DESCRIPTION	ORDER QTY.	CASE QTY.	PRICE
35397	Flanged 4-3/4" Length	25	100	<b>0.59</b>

## 1-1/2" REPAIR TRAP

- Captive nut on "J" bend
- White polypropylene
- 1-1/2" & 1-1/2" to 1-1/4" Reducing washer



**\$1.32**

**EASTMAN.**

PART#	DESCRIPTION	ORDER QTY.	CASE QTY.	PRICE
35380	1-1/2"	25	100	<b>1.32</b>

## 1-1/2" TEE

- White polypropylene
- 1-1/2" Washer
- Slip joint connection



**\$0.71**

**EASTMAN.**

PART#	DESCRIPTION	ORDER QTY.	CASE QTY.	PRICE
35337	1-1/2"	25	200	<b>0.71</b>

## TRAP ADAPTER

- Schedule 40
- Includes nut & washer
- Marvel connector



**\$0.58**

**EASTMAN.**

PART#	DESCRIPTION	ORDER QTY.	CASE QTY.	PRICE
35388	1-1/2"	25	200	<b>0.58</b>

## SLIP JOINT NUT - PVC

- Plastic
- Priced per bag of 10 each



**\$1.17/Bag of 10**

**EASTMAN.**

PART#	DESCRIPTION	ORDER QTY.	CASE QTY.	PRICE
35326	1-1/2"	25	100	<b>1.17</b>

## SLIP JOINT NUT - PVC

- Plastic
- White



**\$0.11**

**EASTMAN.**

PART#	DESCRIPTION	ORDER QTY.	CASE QTY.	PRICE
35064	1-1/2"	50	1000	<b>0.11</b>
35068	1-1/4"	50	200	<b>0.10</b>
35086	1-1/2" (10 Per Bag)	1	100	<b>1.17</b>
35089	1-1/4" (10 Per Bag)	1	100	<b>1.17</b>

## SLIP JOINT WASHER

- Polyethylene washer
- Sold and priced 100 per bag



**\$2.20**

**EASTMAN.**

PART#	DESCRIPTION	ORDER QTY.	CASE QTY.	PRICE
36214	1-1/4"	1	10000	<b>2.20</b>
36215	1-1/2"	1	100	<b>2.20</b>
36217	1-1/2" x 1-1/4"	1	10000	<b>2.20</b>
36219	1-1/2" Tailpiece	1	100	<b>2.20</b>

# DRAINAGE

## FOOD DISPOSER - APARTMENT MODEL

- Adapter allows mounting to any sink flange
- New splash guard included
- Stainless steel, anti-jam swivel impellers
- Corrosion-proof grind chamber and drain housing
- Fast & easy mount system

**\$43.95**

PART#	DESCRIPTION
86708	1/3 HP w/ Pigtail
86709	1/2 HP w/ Pigtail

ORDER QTY.	CASE QTY.	PRICE
1	1	43.95
1	1	52.13



## SINK STRAINER - QUICK CONNECT

- Stainless steel body
- 304 Stainless steel post
- Fits sink w/ 3-1/2" - 4" opening
- 4-1/2" Flange
- 3 Bolt flange installation



**\$3.44**

PART#	DESCRIPTION
30013	W/Die-Cast Slip Joint Nut
30015	With Brass Slip Joint Nut

ORDER QTY.	CASE QTY.	PRICE
1	50	3.44
1	50	3.64



## SINK STRAINER - DOUBLE CUP

- Stainless steel body
- Fits sink w/3-1/2" - 4" opening
- 4-1/2" Flange
- 1-1/2" Slip joint nut
- 304 Stainless steel post



**\$3.24**

PART#	DESCRIPTION
30017	Standard Shank (Standard Length 1-1/4")

ORDER QTY.	CASE QTY.	PRICE
1	50	3.24



## SINK STRAINER

- Stainless steel body
- 4-1/2" Flange
- 304 Stainless steel post basket
- Fits sink w/3-1/2" - 4" opening



**\$2.19**

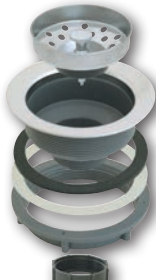
PART#	DESCRIPTION
30001	With Metal Slip Joint Nut
30003	With Brass Slip Joint Nut

ORDER QTY.	CASE QTY.	PRICE
1	50	2.19
1	50	3.24



## SINK STRAINER

- Stick post
- Stainless steel basket
- Fits sink w/3-1/2" - 4" opening
- 4-1/2" Flange
- Chrome-plated ABS Body



**\$1.23**

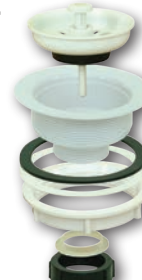
PART#	DESCRIPTION
30005	ABS Body

ORDER QTY.	CASE QTY.	PRICE
1	50	1.23



## SINK STRAINER - ECONOMY

- Stick post
- Fits sink w/3-1/2" - 4" opening
- 4-1/2" Flange
- ABS body



**\$1.63**

PART#	DESCRIPTION
30006	White ABS Basket

ORDER QTY.	CASE QTY.	PRICE
1	50	1.63



## SINK STRAINER - JUNIOR DUO

- Stainless steel body and basket
- Fits sink w/1-7/8" - 2-1/4" opening
- 1-1/2" Basket - 2-1/2" standard shank



**\$1.85**

PART#	DESCRIPTION
30035	Die-Cast Nut

ORDER QTY.	CASE QTY.	PRICE
1	100	1.85



## POP-UP ASSEMBLY

- Brass body
- Easily installed w/most faucets



**\$6.73**

PART#	DESCRIPTION
10901	Chrome - 22-Gauge
10903	Brushed Nickel - 20-Gauge

ORDER QTY.	CASE QTY.	PRICE
1	24	6.73
1	24	8.56



## ONE-PIECE P.O. PLUG

- One-piece ABS w/ stainless steel flange
- Rubber stopper w/ beaded chain
- 1-1/4" x 5" One-piece



**\$1.09**

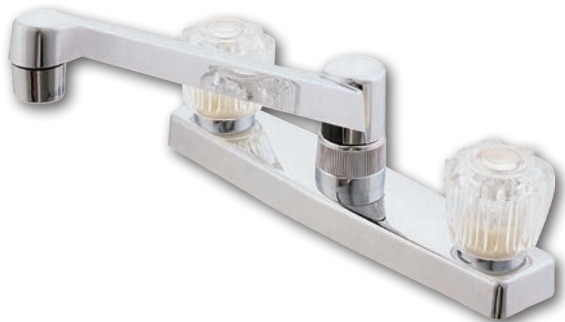
PART#	DESCRIPTION
35073	w/Plastic Locknut
35077	w/Zinc Locknut

ORDER QTY.	CASE QTY.	PRICE
1	48	1.09
1	48	1.32



## NON-METALLIC KITCHEN FAUCET WASHERLESS

- Chrome
- Clear acrylic handles
- Plastic body and waterways
- Washerless cartridge with "D" broach



**\$7.91**

PART#	DESCRIPTION	ORDER		PRICE
		QTY.	CASE QTY.	
10122	Less Spray	1	24	<b>7.91</b>
10123	With Spray	1	24	<b>10.83</b>

## TWO-HANDLE KITCHEN FAUCET WASHERLESS

- Two acrylic handles
- Washerless cartridge



Save  
**10%**  
Entire Page

**\$19.69**

PART#	DESCRIPTION	ORDER		PRICE
		QTY.	CASE QTY.	
10163LF	Chrome - Less Spray	1	12	<b>19.69</b>
10161LF	Chrome - With Black Spray	1	6	<b>23.81</b>

## TWO-HANDLE LAVATORY FAUCET WASHERLESS

- Two acrylic handles
- Washerless cartridge



**\$18.45**

PART#	DESCRIPTION	ORDER		PRICE
		QTY.	CASE QTY.	
10277LF	Chrome - Less Pop-Up	1	12	<b>18.45</b>
10273LF	Chrome - W/Brass Pop-Up	1	6	<b>22.13</b>

## NON-METALLIC LAV FAUCET WASHERLESS

- Plastic body and waterways
- Clear acrylic handles
- Washerless cartridge with "D" style broach



**\$6.26**

PART#	DESCRIPTION	ORDER		PRICE
		QTY.	CASE QTY.	
10252	Less Pop-Up	1	24	<b>6.26</b>



# EASTMAN®

## NEW PEX F1960 OUTLET BOXES



Fits Uponor® & Wirsbo®

All New Expansion PEX Connections Available Now!

### ICEMAKER OUTLET BOXES

#### ICEMAKER OUTLET BOX

- 1/4-Turn ball valve installed
- 1/4" OD compression outlet



**\$10.95**

PART#	DESCRIPTION
60262	1/2" PEX F1960 Connection

ORDER QTY.	CASE QTY.
1	10

PRICE **10.95**



#### ROUND MINI ICEMAKER OUTLET BOX

- Pre-loaded nails provide strong rigid mount
- No support bracket needed
- Nails are reversible and box can be mounted to left or right stud bay
- Trim ring accommodates up to 1" sheet rock



**\$10.11**

PART#	DESCRIPTION
60263	1/2" PEX F1960 Connection

ORDER QTY.	CASE QTY.
1	10

PRICE **10.11**



### WASHING MACHINE OUTLET BOXES

#### CENTER DRAIN WASHING MACHINE OUTLET BOX

- 1/4-Turn ball valve installed
- 3/4" MHT outlet
- Center drain



**\$13.91**

PART#	DESCRIPTION
60260	1/2" PEX F1960 Connection

ORDER QTY.	CASE QTY.
1	10

PRICE **13.91**



#### DUAL OUTLET WASHING MACHINE OUTLET BOX

- 1/4-Turn ball valve installed
- 3/4" MHT outlet
- Right or left side drain



**\$15.41**

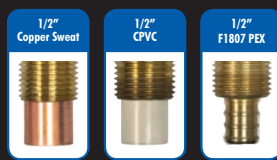
PART#	DESCRIPTION
60261	1/2" PEX F1960 Connection

ORDER QTY.	CASE QTY.
1	10

PRICE **15.41**



# VALVE CONNECTIONS



# OUTLET BOXES

## DUAL OUTLET WASHING MACHINE OUTLET BOX

- 1/4-Turn ball valve installed
- 3/4" MHT outlet
- Right or left side drain



**\$14.20**

PART#	DESCRIPTION	ORDER QTY.	CASE QTY.	PRICE
60243	1/2" Sweat Connection	1	10	14.20
60244	1/2" CPVC Connection	1	10	14.48
60245	1/2" PEX (F1807) Connection	1	10	15.11

## CENTER DRAIN WASHING MACHINE OUTLET BOX

- 1/4-Turn ball valve installed
- 3/4" MHT outlet
- Center drain



**\$12.61**

PART#	DESCRIPTION	ORDER QTY.	CASE QTY.	PRICE
60248	1/2" Sweat Connection	1	10	12.61
60249	1/2" CPVC Connection	1	10	12.61
60250	1/2" PEX (F1807) Connection	1	10	13.54

## CENTER DRAIN WASHER OUTLET BOX WITH HAMMER ARRESTERS

- 1/4-Turn ball valve installed
- 3/4" MHT outlet
- Center drain connection
- Snap-on frame accommodates up to 1" drywall



**\$27.95**

PART#	DESCRIPTION	ORDER QTY.	CASE QTY.	PRICE
60246	1/2" CPVC	1	10	27.95
60247	1/2" PEX Crimp (F1807)	1	10	28.98
60254	1/2" PEX (F1960)	1	10	29.32
60253	1/2" Sweat	1	10	28.35

## WASHING MACHINE OUTLET BOX

- Heavy-duty plastic
- 2" Drain coupling with knock out test cap molded
- Less valve



**\$3.81**

PART#	DESCRIPTION	ORDER QTY.	CASE QTY.	PRICE
60256	Center Drain	1	10	3.81

## WASHING MACHINE OUTLET BOX WITH HAMMER ARRESTERS

- 1/4-Turn ball valves with hammer arresters installed
- 1/2" Sweat inlet
- 3/4" MHT outlet

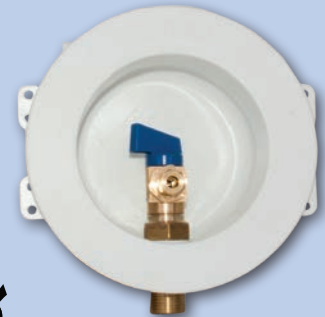


**\$28.90**

PART#	DESCRIPTION	ORDER QTY.	CASE QTY.	PRICE
60252	Dual Drain Connection	1	10	28.90

## ROUND MINI ICEMAKER OUTLET BOX

- Pre-loaded nails provide strong rigid mount
- No support bracket needed
- Nails are reversible and box can be mounted to left or right stud bay
- Trim ring accommodates up to 1" sheet rock



**\$9.74**

PART#	DESCRIPTION	ORDER QTY.	CASE QTY.	PRICE
60237	1/2" Sweat Connection	1	10	9.74
60238	1/2" PEX (F1807)	1	10	10.19
60239	1/2" CPVC Connection	1	10	10.05



## ICEMAKER BOX

- 1/4-Turn ball valve installed
- 1/4" OD compression outlet



**\$10.00**

PART#	DESCRIPTION	ORDER QTY.	CASE QTY.	PRICE
60232	1/2" Sweat Connection	1	10	10.00
60233	1/2" PEX (F1807)	1	10	10.50
60234	1/2" CPVC Connection	1	10	10.40



## ICEMAKER BOX WITH HAMMER ARRESTERS

- 1/4-Turn ball valve with hammer arresters installed
- 1/4" OD compression outlet



**\$17.77**

PART#	DESCRIPTION	ORDER QTY.	CASE QTY.	PRICE
60241	1/2" Sweat Connection	1	10	17.77



# WATER HEATER CONNECTORS

# EASTMAN®

## WATER-FLEX® CORRUGATED CONNECTORS



### STAINLESS STEEL CORRUGATED WATER HEATER CONNECTOR - 3/4" FIP X 3/4" FIP

- Corrugated stainless steel
- Nickel-plated brass nuts



**\$2.70**

PART#	DESCRIPTION	ORDER		PRICE
		QTY.	CASE QTY.	
0437012	12"	1	25	<b>2.70</b>
0437015	15"	1	25	<b>2.75</b>
0437018	18"	1	25	<b>2.85</b>
0437024	24"	1	25	<b>3.85</b>

### STAINLESS STEEL CORRUGATED WATER HEATER CONNECTORS - 3/4" FIP X 1" FIP

- Corrugated stainless steel
- Chrome plated brass nut



**\$3.84**

PART#	DESCRIPTION	ORDER		PRICE
		QTY.	CASE QTY.	
0437512	12"	1	25	<b>3.84</b>
0437515	15"	1	25	<b>4.19</b>
0437518	18"	1	25	<b>4.37</b>
0437524	24"	1	25	<b>5.34</b>

### STAINLESS STEEL CORRUGATED WATER HEATER CONNECTORS - 1" FIP X 1" FIP

- Corrugated stainless steel
- Chrome plated brass nut
- High quality EPDM gasket



**\$4.22**

PART#	DESCRIPTION	ORDER		PRICE
		QTY.	CASE QTY.	
0447512	12"	1	25	<b>4.22</b>
0447515	15"	1	25	<b>4.61</b>
0447518	18"	1	25	<b>4.84</b>
0447524	24"	1	25	<b>5.87</b>

### STAINLESS STEEL CORRUGATED WATER HEATER CONNECTORS - 3/4" FIP X 3/4" FEMALE SWEAT

- Corrugated stainless steel
- Chrome plated brass nut



**\$3.83**

PART#	DESCRIPTION	ORDER		PRICE
		QTY.	CASE QTY.	
0437412	12"	1	25	<b>3.83</b>
0437415	15"	1	25	<b>4.07</b>
0437418	18"	1	25	<b>4.28</b>
0437424	24"	1	25	<b>4.93</b>

# BRAIDED STAINLESS STEEL CONNECTORS

### FLEXIBLE WATER HEATER CONNECTOR 3/4" FIP X 3/4" FIP

- Nickel-plated brass nuts
- Stainless steel ferrules
- Stainless steel braided



**\$3.88**

PART#	DESCRIPTION	ORDER		PRICE
		QTY.	CASE QTY.	
48250	12"	10	50	<b>3.88</b>
48262	15"	10	50	<b>4.25</b>
48251	18"	10	50	<b>4.59</b>
48252	24"	10	50	<b>4.83</b>

### FLEXIBLE WATER HEATER CONNECTORS 3/4" FIP X 3/4" PUSH-FIT BALL VALVE

- Stainless steel braided rubber
- Nickel-plated brass nut
- 3/4" Push-fit ball valve designed for use with copper, CPVC and PEX pipe - no soldering, glue or clamps required



**\$12.95**

PART#	DESCRIPTION	ORDER		PRICE
		QTY.	CASE QTY.	
48233	24"	1	48	<b>12.95</b>



# WATER HEATER ACCESSORIES

## WATER HEATER PANS

- Use with electric water heaters
- Black plastic
- Includes drain fittings



**\$3.08**

**EASTMAN.**

PART#	DESCRIPTION	ORDER CASE		PRICE
		QTY.	QTY.	
60076	20" ID x 22" OD	10	1	<b>3.08</b>
60091	22" ID x 24" OD	10	10	<b>3.54</b>
60082	24" ID x 26" OD	10	10	<b>3.64</b>
60083	26" ID x 28" OD	10	10	<b>4.77</b>
60078	28" ID x 30" OD	10	10	<b>5.87</b>
60077	30" ID x 32" OD	10	1	<b>6.94</b>

## WATER HEATER PANS

- Use with gas water heaters
- Aluminum
- Includes drain fittings



**\$7.86**

**EASTMAN.**

PART#	DESCRIPTION	ORDER CASE		PRICE
		QTY.	QTY.	
60080	20" ID x 22" OD	10	5	<b>7.86</b>
60086	22" ID x 24" OD	10	5	<b>7.93</b>
60079	24" ID x 26" OD	10	5	<b>7.93</b>
60089	26" ID x 28" OD	10	10	<b>10.22</b>
60087	28" ID x 30" OD	5	1	<b>13.85</b>
60094	30" ID x 32" OD	5	1	<b>14.55</b>

## WATER HEATER STAND

- 650 lb. load rating
- Safety clips for screwing to wall or floor included



**\$15.25**

**EASTMAN.**

PART#	DESCRIPTION	ORDER CASE		PRICE
		QTY.	QTY.	
86278	21-1/2" L x 21-1/2" W x 18" H30-60 Gal.	1	5	<b>15.25</b>
86279	24" D x 24" W x 18" H75-100 Gal.	1	1	<b>28.12</b>

## THERMAL EXPANSION TANKS

- 3/4" MIP connection
- Factory pre-charged at 40 PSI
- 305 Stainless steel fittings
- Butyle rubber diaphragm



**\$16.85**

**EASTMAN.**

PART#	DESCRIPTION	ORDER CASE		PRICE
		QTY.	QTY.	
60022	2 Gallon	1	1	<b>16.85</b>
60023	4.5 Gallon	1	1	<b>28.08</b>

## THERMOCOUPLES

- Stainless steel head and weld at tip to provide reliable performance
- Designed to simplify installation on automatic control and burners



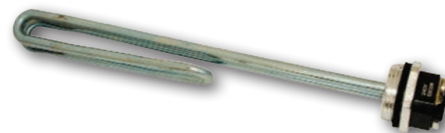
**\$2.39**

**EASTMAN.**

PART#	DESCRIPTION	ORDER CASE		PRICE
		QTY.	QTY.	
60035	18"	1	100	<b>2.39</b>
60036	24"	1	100	<b>2.47</b>
60037	30"	1	100	<b>2.69</b>
60038	36"	1	100	<b>3.15</b>

## WATER HEATER ELEMENT-NORMAL DUTY

- Copper sheath-tinned
- Screw mount with gasket



**\$4.41**

**EASTMAN.**

PART#	DESCRIPTION	ORDER CASE		PRICE
		QTY.	QTY.	
60069	240V x 5500W 10-1/8" Fold Back	1	48	<b>4.41</b>
60061	120V x 1500W 7-1/2" Straight	1	48	<b>3.82</b>
60122N	240V x 3500W 12-1/2" Straight	1	48	<b>3.55</b>
60125N	240V x 2500W 9-3/8" Straight	1	48	<b>3.67</b>
60057N	240V x 4500W 13-1/2" Straight	1	48	<b>3.95</b>
60124N	120V x 2000W 7-1/2" Straight	1	48	<b>2.98</b>
60054	240V x 1500W 7-1/2" Straight	1	48	<b>4.01</b>

# STOP VALVES



COMPLIES WITH NSF-61

# EASTMAN®

## Multi-Turn Valves



### ANGLE STOP VALVE

- Professional series
- Metal handle
- Forged brass body
- Celcon stem

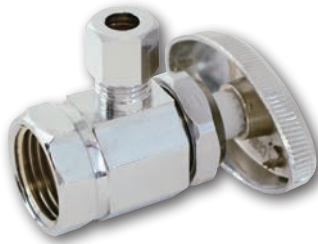


**\$2.52**

PART#	DESCRIPTION	ORDER QTY.	CASE QTY.	PRICE
04348LF	5/8" OD x 3/8" OD	24	96	<b>2.52</b>

### ANGLE STOP VALVE

- Professional series
- Metal handle
- Forged brass body
- Celcon stem



**\$2.41**

PART#	DESCRIPTION	ORDER QTY.	CASE QTY.	PRICE
04322LF	1/2" FIP x 3/8" Comp	24	96	<b>2.41</b>

### ANGLE STOP VALVE - DUAL OUTLET

- Professional series
- Metal handle
- Forged brass body
- Celcon stem
- Solid brass nuts



**\$4.35**

PART#	DESCRIPTION	ORDER QTY.	CASE QTY.	PRICE
04351LF	5/8" Comp (1/2" Nom) x 3/8" Comp x 1/4" Comp	24	96	<b>4.35</b>
04353LF	5/8" Comp (1/2" Nom) x 3/8" Comp x 3/8" Comp	24	96	<b>4.35</b>

### STRAIGHT STOP VALVE

- Professional series
- Individually boxed with barcode
- Forged brass body
- Celcon stem
- Only for PEX tubing (Do not use with any other pipe)



**\$2.90**

PART#	DESCRIPTION	ORDER QTY.	CASE QTY.	PRICE
04342LF	1/2" Barb x 3/8" Comp	24	96	<b>2.90</b>

## 1/4 Turn Valves



### ANGLE STOP VALVE

- Professional series
- Forged brass body
- Teflon seats resist corrosion and provides a watertight seal
- Brass ball mechanism for easy operation



**\$2.98**

PART#	DESCRIPTION	ORDER QTY.	CASE QTY.	PRICE
10738LF	5/8"OD COMP X3/8" OD ANGLE	24	96	<b>2.98</b>

### ANGLE STOP VALVE

- Professional series
- Forged brass body
- Teflon seats resist corrosion and provides a watertight seal
- Brass ball mechanism for easy operation



**\$2.98**

PART#	DESCRIPTION	ORDER QTY.	CASE QTY.	PRICE
10733LF	1/2" FIP X 3/8" OD	24	96	<b>2.98</b>

### ANGLE STOP VALVE - 1/4 TURN DUAL OUTLET

- Professional series
- Forged brass body
- Teflon seats resist corrosion and provides a watertight seal
- Brass ball mechanism for easy operation



**\$7.25**

PART#	DESCRIPTION	ORDER QTY.	CASE QTY.	PRICE
48652LF	5/8" Comp (1/2" Nom) x 3/8" Comp x 3/8" Comp	24	96	<b>7.25</b>
48654LF	5/8" Comp (1/2" Nom) x 3/8" Comp x 1/4" Comp	24	1	<b>7.25</b>

### STRAIGHT STOP VALVE - 1/4 TURN

- Professional series
- Individually boxed with barcode
- Forged brass body
- Teflon seats resist corrosion and provides a watertight seal
- Brass ball mechanism for easy operation



**\$2.65**

PART#	DESCRIPTION	ORDER QTY.	CASE QTY.	PRICE
10728LF	1/2" Barb x 3/8" Comp	24	96	<b>2.65</b>

# EASTMAN® STEEL-FLEX®

## KITCHEN/LAVATORY 3/8" COMP X 1/2" FIP

- Stainless steel braided
- Nickel-plated brass nuts
- Brass barbs



**\$1.40**

PART#	DESCRIPTION	ORDER QTY.	CASE QTY.	PRICE
48003	12"	25	100	1.40
48004	16"	25	100	1.45
48005	20"	25	100	1.50
48006	24"	1	100	1.88
48007	30"	1	100	2.23

## KITCHEN/LAVATORY 1/2" FIP X 1/2" FIP

- Brass barbs
- Nickel plated brass nuts

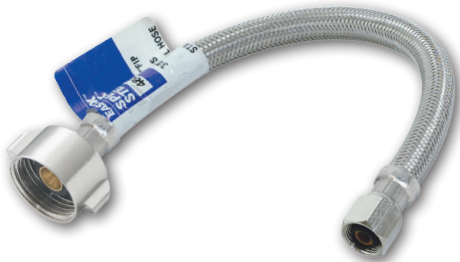


**\$1.65**

PART#	DESCRIPTION	ORDER QTY.	CASE QTY.	PRICE
48015	12"	25	100	1.65
48016	16"	25	100	1.77
48017	20"	25	100	1.87
48018	24"	1	100	2.18
48019	30"	1	100	2.35
48021	48"	10	100	3.28

## CLOSET CONNECTOR 3/8" OD X 7/8" BRASS BALLCOCK NUT

- Stainless steel braided
- Chrome brass ballcock nut
- Brass barbs



**\$1.49**

PART#	DESCRIPTION	ORDER QTY.	CASE QTY.	PRICE
48087	9"	25	100	1.49
48088	12"	25	100	1.38
48089	16"	25	100	1.62
48090	20"	25	100	1.88

# SPEED-FLEX®



## KITCHEN/LAVATORY 1/2" FIP X 3/8" COMP

- Brass barbs
- Nickel-plated brass nuts

**\$1.31**

PART#	DESCRIPTION	ORDER QTY.	CASE QTY.	PRICE
48130	12"	25	100	1.31
48131	16"	25	100	1.35
48132	20"	25	100	1.41
48127	24"	1	100	1.57
48128	30"	1	100	1.79

## KITCHEN/LAVATORY 1/2" FIP X 1/2" FIP

- Celcon barbs
- Nickel-plated brass nuts



**\$1.20**

PART#	DESCRIPTION	ORDER QTY.	CASE QTY.	PRICE
48901	16"	25	100	1.20
48902	20"	25	100	1.29
48903	24"	25	100	1.42
48904	30"	25	100	1.65
48905	36"	25	100	1.65

## CLOSET CONNECTOR 3/8" COMP X 7/8" BRASS BALLCOCK NUT

- Reinforced PVC
- Brass barbs
- Brass nut



**\$1.28**

PART#	DESCRIPTION	ORDER QTY.	CASE QTY.	PRICE
48145	12"	1	100	1.28
48170	16"	1	100	1.35
48175	20"	1	100	1.41



# TOILET REPAIR

## WAX RING

- Fits 3" or 4" waste lines
- Fits all floor-type toilet bowls



**\$0.67**

PART#	DESCRIPTION
40143	Wax Ring Only
40144	Wax Ring w/ Flange 4"x3"

**EASTMAN**

ORDER QTY.	CASE QTY.	PRICE
48	48	<b>0.67</b>
24	24	<b>0.75</b>

## TANK-TO-BOWL GASKET

- Used on flush valve to seal tank to bowl connection
- Beveled sponge rubber



**\$0.70**

PART#	DESCRIPTION
36256	Fits American standard®, Kohler®, Western Pottery® & Briggs®

ORDER QTY.	CASE QTY.	PRICE
10	300	<b>0.70</b>

## CLOSET TECHNO FLANGE W/KNOCKOUT - PVC/DWV

- One piece knockout will not fall down drain line
- Knockout breaks out in one piece
- Flush Tite design allows flush installation over 3" pipe or inside 4" pipe



**\$5.98**

PART#	DESCRIPTION
85722	4" x 3" Hub

ORDER QTY.	CASE QTY.	PRICE
1	40	<b>5.98</b>



## CLOSET SCREW SET

- Nickel-plated, closed-end nut
- Nickel-plated washer
- Priced and sold by the pair



**\$0.29**

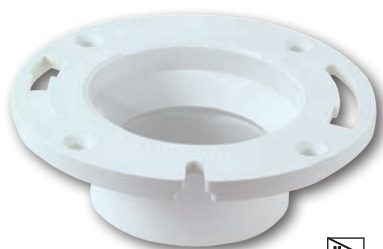
PART#	DESCRIPTION
40031	1/4" x 3-1/2" Bolt - Pair
40029	1/4" x 2-1/4" Bolt - Pair

ORDER QTY.	CASE QTY.	PRICE
25	500	<b>0.29</b>
25	400	<b>0.31</b>



## CLOSET FLANGES - PVC/DWV

- Fits on 3" or 4"
- Schedule 40 PVC
- Without stop or knocker
- Standard pattern



**\$1.62**

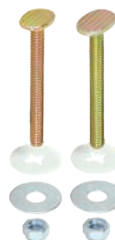
PART#	DESCRIPTION
40012	4" x 3" Hub

ORDER QTY.	CASE QTY.	PRICE
1	12	<b>1.62</b>



## CLOSET BOLT SET - BRASS-PLATED BOLT

- Nickel-plated, open-end nut
- Nickel-plated washer
- Plastic captive washer
- Priced and sold by the pair



**\$0.25**

PART#	DESCRIPTION
40042	1/4" x 1-1/2" Bolt - Pair
40044	1/4" x 1-3/4" Bolt - Pair
40024	1/4" x 2-1/4" Bolts - One Pair
40025	1/4" x 3-1/2" Bolts - One Pair
40028	5/16" x 2-1/4" Bolts - One Pair
40032	5/16" x 3-1/2" Bolts - One Pair

ORDER QTY.	CASE QTY.	PRICE
25	400	<b>0.25</b>
25	400	<b>0.26</b>
25	400	<b>0.27</b>
25	400	<b>0.37</b>
25	400	<b>0.39</b>
25	100	<b>0.48</b>



## PVC CLOSET FLANGE W/KNOCKOUT

- Knockout breaks in one piece
- Allows flush installation over 3" pipe or inside 4" pipe



**\$1.80**

PART#	DESCRIPTION
85727	4" x 3" Hub

ORDER QTY.	CASE QTY.	PRICE
1	12	<b>1.80</b>



## TOILET TANK-TO-BOWL BOLT SET

- Complete with nuts & washers
- Priced & sold by the pair



**\$0.62**

PART#	DESCRIPTION
40047	Brass-Plated, 5/16" x 3", Round-Head Bolts
40041	Solid-Brass, 5/16" x 3", Round-Head Bolts
40043	Solid Brass 5/16" x 3" Flat-Head Bolts

ORDER QTY.	CASE QTY.	PRICE
25	200	<b>0.62</b>
25	200	<b>1.86</b>
25	200	<b>1.94</b>



**Save 10%**

## WOOD TOILET SEATS W/LID

- Closed-front seat w/lid
- Enameled-wood composition
- Hardware included
- White
- 5 Year warranty



**\$5.97**

PART#	DESCRIPTION	ORDER		PRICE
		QTY.	CASE QTY.	
65905	Round	6	6	5.97
65907	Elongated	6	6	7.57



## PLASTIC TOILET SEATS W/LID

- White
- Heavy plastic body
- Hardware included
- Stain resistant
- 5 Year warranty



**\$6.40**

PART#	DESCRIPTION	ORDER		PRICE
		QTY.	CASE QTY.	
65901	Round	10	10	6.40
65903	Elongated	10	10	6.40



## BLUE FLAPPER - PRO SERIES

- Fits most brass or plastic flush valves
- Stainless steel reinforced chain
- Fiber PVC - compare to Korky
- 15 Year guarantee



**\$0.77**

PART#	DESCRIPTION	ORDER		PRICE
		QTY.	CASE QTY.	
48550	Blue PVC Flapper	10	100	0.77

**EASTMAN**

## PVC BLUE FLAPPER - PRO SERIES

- PVC with reinforced fiber strap
- Fits all styles
- Fits most brass or plastic flush valves



**\$0.63**

PART#	DESCRIPTION	ORDER		PRICE
		QTY.	CASE QTY.	
48551	PVC Blue Flapper	12	100	0.63

**EASTMAN**

## PLASTIC BALLCOCK

- Water level adjustment screw
- Refill tube
- 5/8" or 1/2" Coupling nut
- Flange nut shank washer float rod



**\$2.35**

PART#	DESCRIPTION	ORDER		PRICE
		QTY.	CASE QTY.	
40201	8-1/2"	1	50	2.35
40203	10" Anti-Siphon	1	50	2.78

## 8-1/2" BRASS PLATED ARM

- Brass-plated arm
- Universal fit



**\$0.85**

PART#	DESCRIPTION	ORDER		PRICE
		QTY.	CASE QTY.	
40065	Chrome Handle, Plastic Nut	10	200	0.85
40049	Brushed Nickel Handle, Plastic Nut	10	100	2.16

## ADJUSTABLE ANTI-SIPHON FILL VALVE

- Anti-siphon fill valve
- Compare to Fluidmaster 400A
- Adjustable 8" to 13"
- Easy, no-tool installation
- 5 Year warranty



**\$4.65**

PART#	DESCRIPTION	ORDER		PRICE
		QTY.	CASE QTY.	
40202	Adjustable Fill Valve	24	12	4.65



## 8-1/2" PLASTIC ARM

- Plastic handle, plastic nut
- Universal fit w/white plastic arm



**\$0.70**

PART#	DESCRIPTION	ORDER		PRICE
		QTY.	CASE QTY.	
40057	Chrome Handle	10	200	0.70

PRSRT STD  
US POSTAGE PAID  
PERMIT #552  
ATLANTA, GA



# FREE GIFT MONTH



## CUSTOMER APPRECIATION TIME!

### PEX BALL VALVE

- Brass body
- Stamped steel handle w/vinyl grip
- 400 WOG
- Full port



**\$2.69**

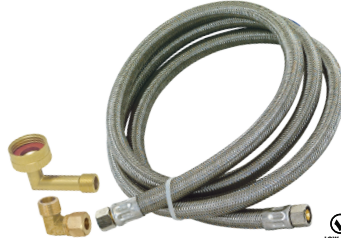


PART#	DESCRIPTION	ORDER QTY.	CASE QTY.	PRICE
20093LF	1/2" PEX x 1/2" PEX	10	100	<b>2.69</b>
20094LF	3/4" PEX x 3/4" PEX	10	100	<b>3.63</b>
20095LF	1" PEX x 1" PEX	10	60	<b>6.45</b>

### SS DISHWASHER INSTALLATION KIT UNIVERSAL FIT

- Fits all dishwasher connections
- Includes 2 elbow fittings 3/8" MIP and 3/4" FHT
- Stainless steel braided
- Nickel-plated brass nuts

**NEW LENGTHS!**



**\$4.58**



PART#	DESCRIPTION	ORDER QTY.	CASE QTY.	PRICE
41037	4'	12	12	<b>4.58</b>
41041	5'	12	12	<b>4.86</b>
41045	6'	12	12	<b>5.15</b>
41059	8'	12	12	<b>6.63</b>
41060	10'	12	12	<b>8.20</b>
41058	12'	12	12	<b>9.82</b>

### PEX ICEMAKER CONNECTOR

**NEW**

- PEX 1/8" ID (1/4" OD) gray 8' roll
- Includes brass captured nuts
- 96" Long



**\$1.57**



PART#	DESCRIPTION	ORDER QTY.	CASE QTY.	PRICE
48316	8'	1	12	<b>1.57</b>