

SUBMITTAL SHEET

811 Small Diameter Series

APOLLOXPRESS® Press End Copper Tee
CxCxC with (½" through 2")



| | |
|------------------------|--|
| Job Name: | |
| Job Location: | |
| Engineer: | |
| Contractor: | |
| Tag: | |
| PO Number: | |
| Representative: | |
| Wholesale Distributor: | |



DESCRIPTION

The APOLLOXPRESS® 811 Small Diameter Press Tee features a Lead-Free dezincification resistant copper body and an EPDM O-Ring. Our Small Diameter APOLLOXPRESS® products are manufactured utilizing proven ASTM materials and standards. Proudly Made In The USA.

FEATURES

- Lead-Free Construction
- Leak-Before-Press Technology
- Compatible with Pro-Press™ Pressing Tools
- Approved for underground installation (per local installation code)
- Use with hard/soft ASTM B88 K, L & M Copper Tube
- Made in USA
- cUPC® Compliant
- ARRA Compliant

PERFORMANCE RATING

- Maximum Pressure: 200 psi
- Temperature Range: 0°F to 250°F depending on application. Hot Water up to 250°F, Chilled Water down to 33°F

APPROVALS

- NSF/ANSI NSF 61 – Water Quality
- NSF/ANSI NSF-372 – Lead Free (LF)
- IAPMO File Listings: 4861, 6174 & N-4951

APOLLOXPRESS

- Small Diameter Sizes ½" through 2"
- Model 811, Tee

STANDARD MATERIALS

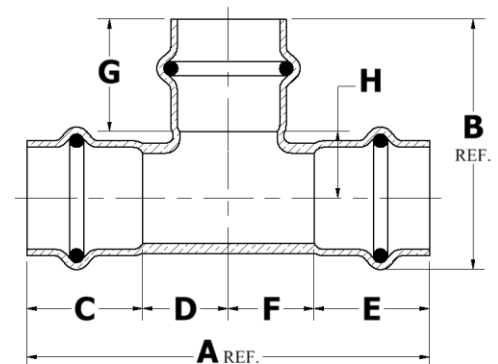
| Part Name | Material |
|-------------|------------------------------|
| Body | UNS C12200 Copper |
| O-Ring | EPDM |
| Lubrication | Silicone, ANSI/NSF-61 Listed |

DIMENSIONS

| Item No. | Description | Dimension (in.) | | | | | | | | | | (lb.) | |
|----------|--------------|-----------------|------|------|------|------|------|------|------|--------|-------|-------|-------|
| | | A | B | C* | D** | E* | F** | G* | H** | Height | Width | | Depth |
| 10075578 | 811 ½ CxCxC | 3.04 | 1.78 | 0.83 | 0.70 | 0.83 | 0.70 | 0.83 | 0.49 | 1.78 | 3.04 | 0.95 | 0.20 |
| 10075580 | 811 ¾ CxCxC | 3.47 | 2.17 | 0.92 | 0.82 | 0.92 | 0.82 | 0.92 | 0.64 | 2.17 | 3.47 | 1.24 | 0.30 |
| 10075582 | 811 1 CxCxC | 3.90 | 2.51 | 0.98 | 0.98 | 0.98 | 0.98 | 0.98 | 0.80 | 2.51 | 3.90 | 1.50 | 0.45 |
| 10075096 | 811 1¼ CxCxC | 4.12 | 2.94 | 1.09 | 0.98 | 1.09 | 0.98 | 1.09 | 0.98 | 2.94 | 4.12 | 1.75 | 0.63 |
| 10075098 | 811 1½ CxCxC | 4.75 | 3.43 | 1.31 | 1.07 | 1.31 | 1.07 | 1.31 | 1.07 | 3.43 | 4.75 | 2.11 | 0.96 |
| 10075100 | 811 2 CxCxC | 5.75 | 4.17 | 1.51 | 1.37 | 1.51 | 1.37 | 1.51 | 1.37 | 4.17 | 5.75 | 2.58 | 1.84 |

* Tolerance +/- .05"

** Tolerance +.09 / -.03



Elkhart Products Corporation

1255 Oak Street, Elkhart, IN 46514

www.elkhartproducts.com | (574) 264-3181

This specification is provided for reference only. Elkhart Products Corporation reserves the right to change any portion of this specification without notice and without incurring obligation to make such changes to Elkhart products previously or subsequently sold.

