

SUBMITTAL SHEET

811-R Small Diameter Series

APOLLOXPRESS® Press End Copper Reducer Run-Outlet Tee
CxCxC (¾" x ½" x ½" through 2" x 1 ½" x 2")



Job Name:	
Job Location:	
Engineer:	
Contractor:	
Tag:	
PO Number:	
Representative:	
Wholesale Distributor:	



DESCRIPTION

The APOLLOXPRESS® 811-R Small Diameter Press Reducing Run & Outlet Tee features a Lead-Free dezincification resistant copper body and an EPDM O-Ring. Our Small Diameter APOLLOXPRESS® products are manufactured utilizing proven ASTM materials and standards. Proudly Made In The USA.

FEATURES

- Lead-Free Construction
- Leak-Before-Press Technology
- Compatible with Pro-Press™ Pressing Tools
- Approved for underground installation (per local installation code)
- Use with hard/soft ASTM B88 K, L & M Copper Tube
- Made in USA
- cUPC® Compliant
- ARRA Compliant

APOLLOXPRESS

- Small Diameter Size ¾" x ½" x ½" through 2" x 1 ½" x 2"
- Model 811-R, Reducer Run/Outlet Tee CxCxC

PERFORMANCE RATING

- Maximum Pressure: 200 psi
- Temperature Range: 0°F to 250°F depending on application. Hot Water up to 250°F, Chilled Water down to 33°F

APPROVALS

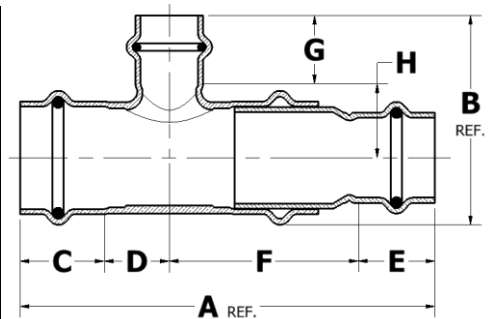
- NSF/ANSI NSF 61 – Water Quality
- NSF/ANSI NSF-372 – Lead Free (LF)
- IAPMO File Listings: 4861, 6174 & N-4951

STANDARD MATERIALS

Part Name	Material
Body	UNS C12200 Copper
O-Ring	EPDM
Lubrication	Silicone, ANSI/NSF-61 Listed

DIMENSIONS

Item No.	Description	Dimension (in.)											(lb.)
		A	B	C*	D**	E*	F**	G*	H**	Height	Width	Depth	
10066590	811 ¾x½x½ CxCxC	4.25	2.07	0.92	0.65	0.81	1.87	0.76	0.70	2.07	4.25	1.24	0.33
10066039	811 ¾x½x¾ CxCxC	4.58	2.17	0.92	0.82	0.81	2.04	0.92	0.64	2.17	4.58	1.24	0.38
10066591	811 1x½x½ CxCxC	4.74	2.32	0.93	0.72	0.81	2.28	0.76	0.82	2.32	4.74	1.50	0.45
10066592	811 1x½x¾ CxCxC	5.07	2.44	0.98	0.86	0.81	2.42	0.92	0.79	2.44	5.07	1.50	0.49
10066066	811 1x½x1 CxCxC	5.30	2.51	0.98	0.98	0.81	2.54	0.98	0.80	2.51	5.30	1.50	0.55
10066593	811 1x¾x½ CxCxC	4.59	2.32	0.93	0.72	0.85	2.09	0.76	0.82	2.32	4.59	1.50	0.47
10066594	811 1x¾x¾ CxCxC	4.91	2.44	0.98	0.86	0.85	2.23	0.92	0.79	2.44	4.91	1.50	0.51
10066040	811 1x¾x1 CxCxC	5.14	2.51	0.98	0.98	0.85	2.35	0.98	0.80	2.51	5.14	1.50	0.57
10066102	811 1x¾x1½ CxCxC	7.04	2.94	0.93	2.45	0.85	2.82	1.09	0.98	2.94	7.04	1.75	0.99
10066049	811 1½x½x½ CxCxC	5.87	3.04	1.09	0.98	0.85	2.96	0.85	1.44	3.04	5.87	1.75	0.81
10066080	811 1½x½x1 CxCxC	5.50	3.04	1.09	0.98	0.81	2.64	0.97	1.20	3.04	5.50	1.75	0.81
10066392	811 1½x½x1½ CxCxC	5.86	2.94	1.09	0.98	0.85	2.96	1.09	0.98	2.94	5.86	1.75	0.81
10066052	811 1½x¾x¾ CxCxC	5.73	3.10	1.09	0.98	0.85	2.82	0.89	1.34	3.10	5.73	1.75	0.79
10066053	811 1½x¾x1 CxCxC	5.73	3.04	1.09	0.98	0.85	2.82	0.97	1.20	3.04	5.73	1.75	0.79



Elkhart Products Corporation
1255 Oak Street, Elkhart, IN 46514
www.elkhartproducts.com (574) 264-3181

* Tolerance +/- .045"
** Tolerance +.09 / -.03

List continued on sheet #2

This specification is provided for reference only. Elkhart Products Corporation reserves the right to change any portion of this specification without notice and without incurring obligation to make such changes to Elkhart products previously or subsequently sold.

SUBMITTAL SHEET

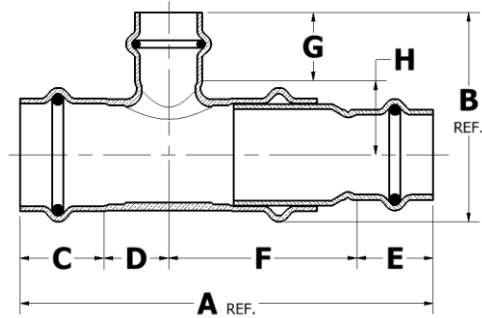
811-R Small Diameter Series

APOLLOXPRESS® Press End Copper Reducer Run-Outlet Tee
CxCxC (3/4" x 1/2" x 1/2" through 2" x 1 1/2" x 2")

List continued from sheet #1

Job Name:	
Job Location:	
Engineer:	
Contractor:	
Tag:	
PO Number:	
Representative:	
Wholesale Distributor:	

Item No.	Description	Dimension (in.)											(lb.)
		A	B	C*	D**	E*	F**	G*	H**	Height	Width	Depth	
10066054	811 1 1/4 x 3/4 x 1/4 CxCxC	5.73	2.94	1.09	0.98	0.85	2.82	1.09	0.98	2.94	5.73	1.75	0.79
10066044	811 1 1/4 x 3/4 x 1/2 CxCxC	8.04	3.43	1.04	2.72	0.89	3.40	1.31	1.07	3.43	8.04	1.75	1.47
10066055	811 1 1/4 x 1 x 1/4 CxCxC	5.44	3.04	1.09	0.98	0.93	2.45	0.85	1.44	3.04	5.44	1.75	0.83
10075122	811 1 1/4 x 1 x 3/4 CxCxC	4.10	3.10	1.09	0.98	0.97	1.07	0.89	1.34	3.10	4.10	1.75	0.63
10075124	811 1 1/4 x 1 x 1 CxCxC	4.10	3.04	1.09	0.98	0.97	1.07	1.09	1.20	3.04	4.10	1.75	0.63
10066056	811 1 1/4 x 1 x 1 1/4 CxCxC	5.44	2.94	1.09	0.98	0.93	2.45	1.09	0.98	2.94	5.44	2.11	0.83
10066395	811 1 1/4 x 1 x 1 1/2 CxCxC	7.75	3.43	1.04	2.72	0.93	3.07	1.31	1.07	3.43	7.75	2.11	1.50
10066383	811 1 1/2 x 3/4 x 3/4 CxCxC	5.91	3.07	1.31	0.69	0.89	3.02	0.89	1.14	3.07	5.91	2.11	1.06
10066397	811 1 1/2 x 3/4 x 1 CxCxC	6.16	3.16	1.31	0.82	0.89	3.15	0.97	1.14	3.16	6.16	2.11	1.13
10066058	811 1 1/2 x 3/4 x 1 1/4 CxCxC	5.97	3.28	1.31	0.94	0.85	2.87	1.09	1.14	3.28	5.97	2.11	1.15
10066042	811 1 1/2 x 3/4 x 2 CxCxC	10.11	4.17	1.31	3.57	0.89	4.35	1.51	1.37	4.17	10.11	2.11	2.83
10066011	811 1 1/2 x 1 x 3/4 CxCxC	5.62	3.07	1.31	0.69	0.93	2.69	0.89	1.14	3.07	5.62	2.11	1.09
10066012	811 1 1/2 x 1 x 1 CxCxC	5.87	3.16	1.31	0.82	0.93	2.82	0.97	1.14	3.16	5.87	2.11	1.16
10066081	811 1 1/2 x 1 x 1 1/4 CxCxC	6.12	3.28	1.31	0.94	0.93	2.94	1.09	1.14	3.28	6.12	2.11	1.18
10066013	811 1 1/2 x 1 x 1 1/2 CxCxC	6.37	3.43	1.31	1.07	0.93	3.07	1.31	1.07	3.43	6.37	2.11	1.18
10066108	811 1 1/2 x 1 x 2 CxCxC	9.90	4.17	1.31	3.57	0.97	4.06	1.51	1.37	4.17	9.90	2.11	1.24
10066059	811 1 1/2 x 1 1/4 x 3/4 CxCxC	5.38	4.22	1.31	0.69	1.04	2.34	0.81	2.36	4.22	5.38	2.11	1.07
10066060	811 1 1/2 x 1 1/4 x 1 CxCxC	5.38	3.07	1.31	0.69	1.04	2.34	0.89	2.02	3.07	5.38	2.11	1.07
10066014	811 1 1/2 x 1 1/4 x 1 1/4 CxCxC	5.63	3.16	1.31	0.82	1.04	2.47	0.97	1.14	3.16	5.63	2.11	1.14
10075126	811 1 1/2 x 1 1/4 x 1 1/2 CxCxC	4.37	3.26	1.31	0.94	1.09	1.03	1.09	1.14	3.26	4.37	2.11	0.90
10066393	811 1 1/2 x 1 1/4 x 2 CxCxC	6.13	3.43	1.31	1.07	1.04	2.72	1.31	1.07	3.43	6.13	2.11	1.22
10066109	811 1 1/2 x 1 1/2 x 2 CxCxC	9.59	4.17	1.31	3.57	1.04	3.67	1.51	1.37	4.17	9.59	2.58	2.78
10066384	811 2 x 1/2 x 2 CxCxC	8.28	4.17	1.51	1.37	0.85	4.56	1.51	1.37	4.17	8.28	2.58	2.18
10066121	811 2 x 3/4 x 3/4 CxCxC	6.67	3.65	1.51	0.61	0.89	3.59	0.89	1.47	3.65	6.67	2.58	1.71
10066092	811 2 x 3/4 x 1 1/4 CxCxC	8.11	4.35	1.51	1.37	0.89	4.35	1.31	1.76	4.35	8.11	2.58	2.30
10066388	811 2 x 3/4 x 2 CxCxC	8.11	4.17	1.51	1.37	0.89	4.35	1.51	1.37	4.17	8.11	2.58	2.30
10066079	811 2 x 1 x 1/2 CxCxC	6.46	4.80	1.59	0.61	0.97	3.30	0.81	2.69	4.80	6.46	2.58	2.33
10066062	811 2 x 1 x 3/4 CxCxC	6.46	3.65	1.59	0.61	0.97	3.30	0.89	1.47	3.65	6.46	2.58	1.74
10066017	811 2 x 1 x 1 CxCxC	6.90	3.72	1.51	0.87	0.97	3.56	0.97	1.47	3.72	6.90	2.58	1.78
10066126	811 2 x 1 x 1 1/4 CxCxC	7.15	3.84	1.51	0.99	0.97	3.68	1.09	1.46	3.84	7.15	2.58	1.83
10066197	811 2 x 1 x 1 1/2 CxCxC	7.90	4.35	1.51	1.37	0.97	4.06	1.31	1.76	4.35	7.90	2.58	2.33
10066018	811 2 x 1 x 2 CxCxC	7.90	4.17	1.51	1.37	0.97	4.06	1.51	1.37	4.17	7.90	2.58	2.33
10066063	811 2 x 1 1/4 x 3/4 CxCxC	6.14	3.65	1.59	0.61	1.04	2.91	0.89	1.47	3.65	6.14	2.58	1.66
10066019	811 2 x 1 1/4 x 1 CxCxC	6.84	3.84	1.51	0.99	1.04	3.29	1.09	1.46	3.84	6.84	2.58	1.75
10066125	811 2 x 1 1/4 x 1 1/2 CxCxC	7.59	4.35	1.51	1.37	1.04	3.67	1.31	1.76	4.35	7.59	2.58	2.25
10066064	811 2 x 1 1/4 x 2 CxCxC	7.59	4.17	1.51	1.37	1.04	3.67	1.51	1.37	4.17	7.59	2.58	2.25
10066065	811 2 x 1 1/2 x 1/2 CxCxC	6.31	4.80	1.59	0.61	1.31	2.81	0.81	2.69	4.80	6.31	2.58	2.37
10066020	811 2 x 1 1/2 x 3/4 CxCxC	6.31	3.65	1.59	0.61	1.31	2.81	0.89	1.47	3.65	6.31	2.58	1.78
10066021	811 2 x 1 1/2 x 1 CxCxC	6.75	3.71	1.51	0.87	1.31	3.07	0.97	1.47	3.71	6.75	2.58	1.82
10066022	811 2 x 1 1/2 x 1 1/4 CxCxC	7.00	3.84	1.51	0.99	1.31	3.19	1.09	1.46	3.84	7.00	2.58	1.87
10066023	811 2 x 1 1/2 x 1 1/2 CxCxC	7.75	4.35	1.51	1.37	1.31	3.57	1.31	1.76	4.35	7.75	2.58	2.37
10066024	811 2 x 1 1/2 x 2 CxCxC	7.75	4.17	1.51	1.37	1.31	3.57	1.51	1.37	4.17	7.75	2.58	2.37



* Tolerance +/- .045"
** Tolerance +.09 / -.03