

Single Water Faucets – Deckmount

TECK[®]
COMMERCIAL

DELTA[®]

Features:

- Fits a maximum 1-1/4" diameter hole (7/8" diameter hole recommended)
- Teck[®] rigid/swivel gooseneck
 - unique design permits field installation as a rigid or swivel gooseneck
 - heavy-duty gooseneck made from seamless brass pipe
- All brass body with vandal resistant locking pin to prevent damage to counter top (can be removed in field if not required)
- Raised lockwasher to provide positive gripping during installation
- Teck[®] Lab structure
- C.P. renewable brass seat
- Two handle variations
 - 2 arm Teck[®] Lab handle
 - ADA compliant 2-3/4" lever blade handle
- Two vacuum breaker variations
 - Angled atmospheric vacuum breaker. Brass construction with durable silicone disk allowing high heat and water hammer shock resistance. Provides superior performance when used with aspirator assemblies
 - Dual check in-line vacuum breaker resulting in above average flow rate and consequently lower pressure loss
- Gooseneck can be oriented to suit left, center, or right handle operation

2 Arm Lab Handle Product

With Gooseneck Spout

- W6600**
Deckmount single faucet with rigid/swivel gooseneck complete with vandal resistant locking pin, 1/4" I.D. 10 serration nozzle, shank, locknut, lockwasher, 2 arm lab handle, Teck[®] Lab structure, C.P. renewable brass seat, 1/4" NPT tailpiece and coupling nut
- W6600-9**
As W6600, but with in-line dual check vacuum breaker and nozzle

With Angle Vacuum Breaker Spout

- W6600-10**
Deckmount single faucet with rigid/swivel angle vacuum breaker spout, complete with vandal resistant locking pin, 1/4" I.D. 10 serration nozzle, shank, locknut, lockwasher, 2 arm lab handle, Teck[®] Lab structure, C.P. renewable brass seat, 1/4" NPT tailpiece and coupling nut



ADA Compliant 2-3/4" Lever Blade Handle Product

With Gooseneck Spout

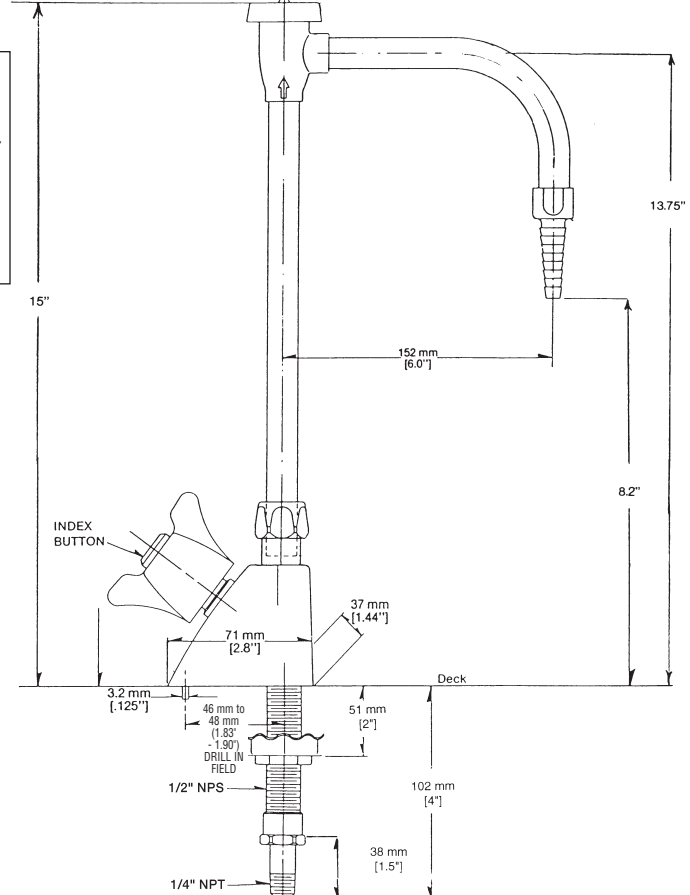
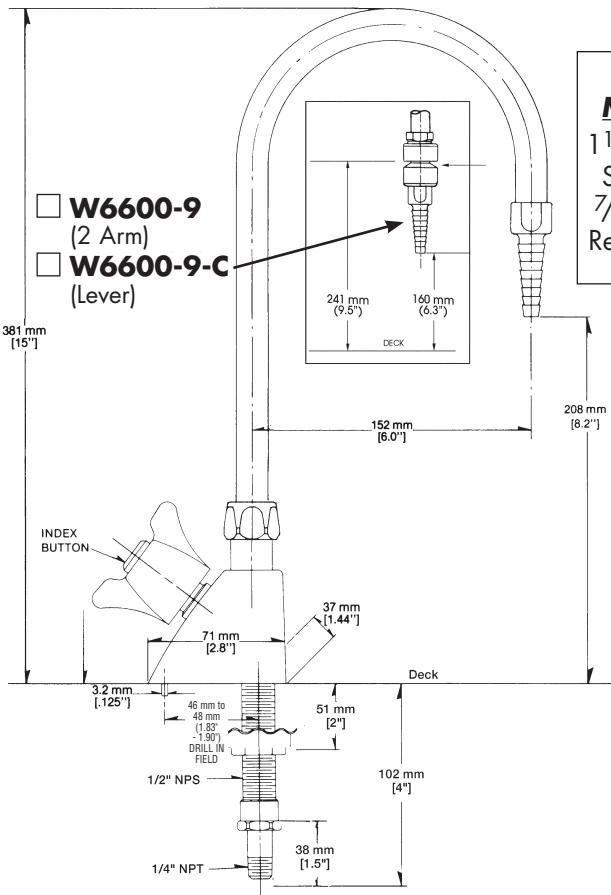
- W6600-C**
Deckmount single faucet with rigid/swivel gooseneck complete with vandal resistant locking pin, 1/4" I.D. 10 serration nozzle, shank, locknut, lockwasher, ADA compliant 2-3/4" lever blade handle, Teck[®] Lab structure, C.P. renewable brass seat, 1/4" NPT tailpiece and coupling nut
- W6600-9-C**
As W6600-C, but with in-line dual check vacuum breaker and nozzle

With Angle Vacuum Breaker Spout

- W6600-10-C**
Deckmount single faucet with rigid/swivel angle vacuum breaker spout, complete with vandal resistant locking pin, 1/4" I.D. 10 serration nozzle, shank, locknut, lockwasher, ADA compliant 2-3/4" lever blade handle, Teck[®] Lab structure, C.P. renewable brass seat, 1/4" NPT tailpiece and coupling nut

- W6600** (2 Arm – shown)
- W6600-C** (Lever)

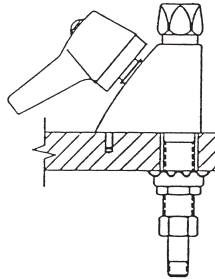
- W6600-10** (2 Arm – shown)
- W6600-10-C** (Lever)



Maximum
 1 1/4" Diameter
 Shank Hole,
 7/8" Diameter
 Recommended

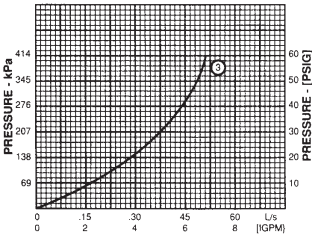
- W6600-9**
(2 Arm)
- W6600-9-C**
(Lever)

**2-3/4" Lever Blade
 Handle Product**



Not for potable water.

WATER FLOW



FLOW RATE - L/s (GPM)
 FOR:
 3 - Compression valves with 6.4mm (1/4") nozzles

**FOR OPTIONAL
 RIGID/SWIVEL
 SPOUTS**
 See DSP-LABSOpt for
 detailed specification

Approvals and Standards Met:

- CSA certified.
 Complies to ASME A112.18.1/CSA B125.1
- Indicates compliance to ICC/ANSI A117.1
 when 2-3/4" lever blade handle is used

In-line VB tested and approved in conformance with ASSE 1035
 "Laboratory Faucet Vacuum Breakers".

CSA certified to B64.7

Angle VB tested and approved in conformance with ASSE 1001 and
 CSA B64.1.1

Note: Measurements may vary ± 6mm (0.25")