

IN11X Firmware Update Instructions

Items needed:

Hardware

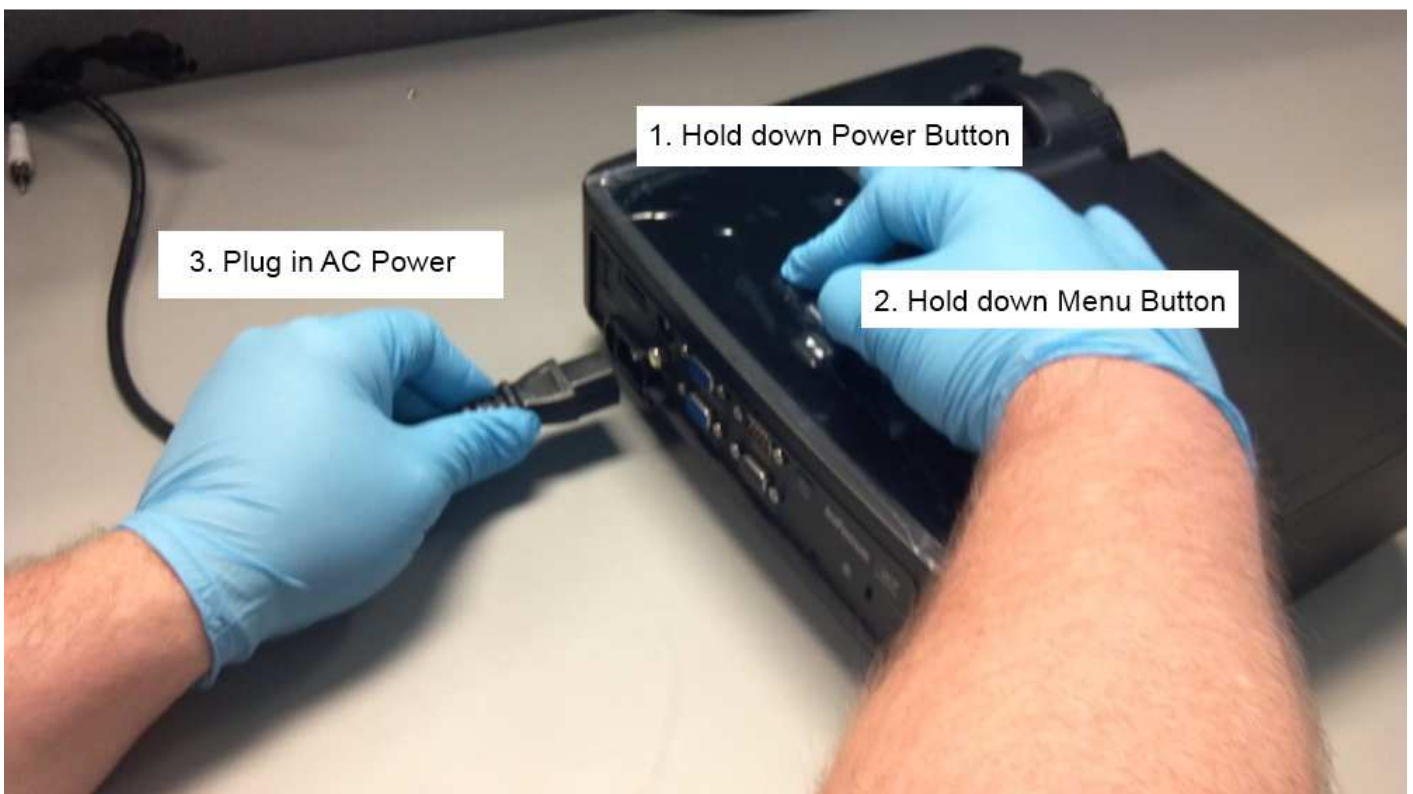
- Windows XP or 7 based computer
- USB cable, A to mini-B
- C13 Power cord (standard PC power cord)

Software

- IN112_114 Firmware Update utility
- Update image file (.img)

Put projector in Update Mode

1. Now go to the projector and hold down the Power key and Menu key then plug in AC power
 - a. Continue to hold down Power and Menu until the lamp/temp LED starts flashing
(Takes about 4-5 seconds)

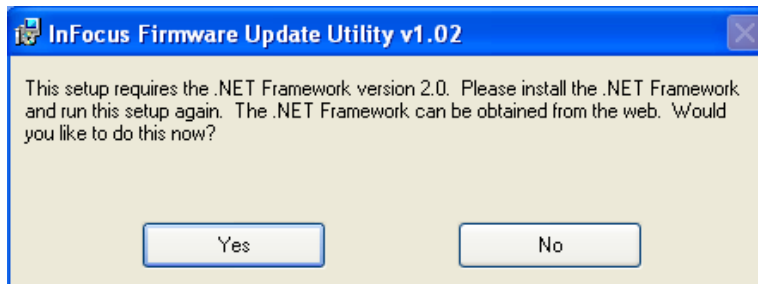


2. Plug in the USB cable into the Projector and computer

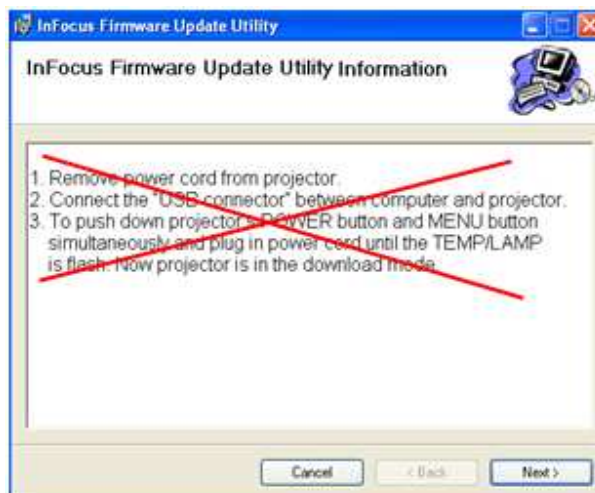


Install Firmware Update Utility

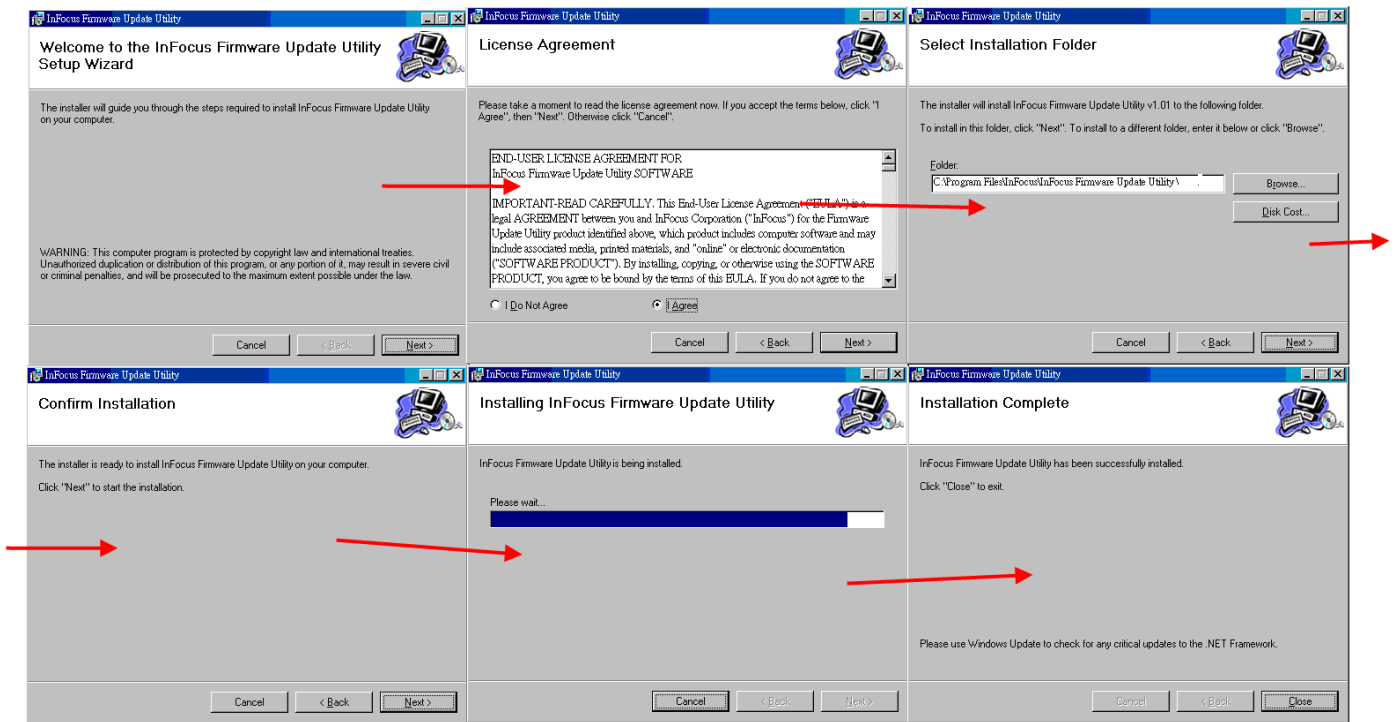
1. Run IN112 IN114 Update Utility.msi on the PC you will be using to upgrade the projector.
2. If you get a message below about .NET 2.0, go to the Microsoft site to download .NET 2.0 and install first



3. **Ignore** the instructions on this screen, projector should already be in Update mode, click Next



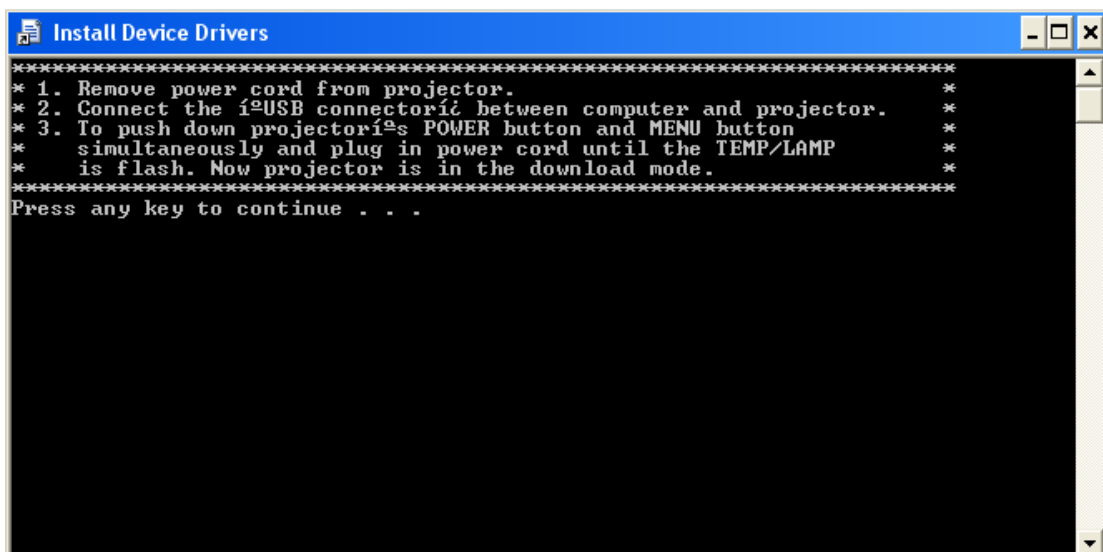
4. Click Next through the following windows to install the update utility



5. After the install is complete, go to Start menu > All Programs > Firmware Update utility > Install Device Drivers



6. Press any key on your keyboard to start the driver install. The window will close after completion

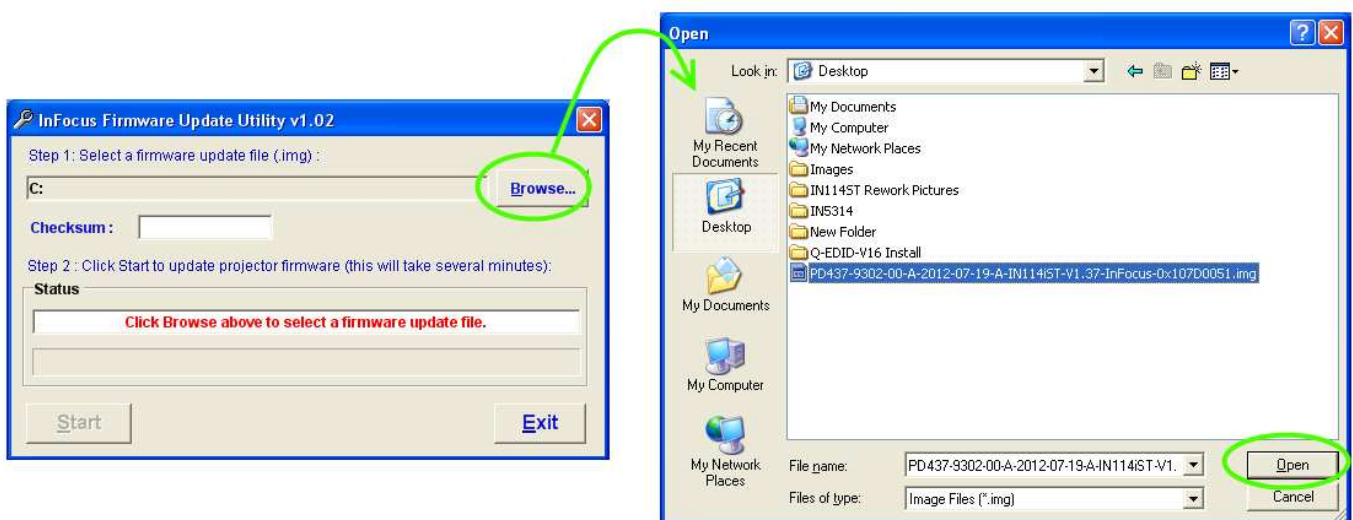


Update Projector Firmware

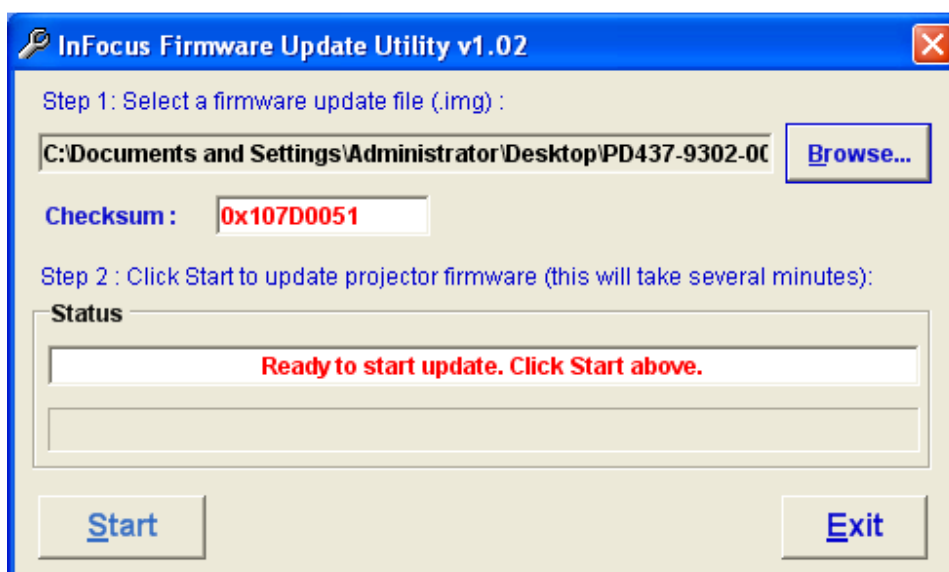
1. Double click the “Firmware Update Utility v1.02” shortcut that was created on your desktop.



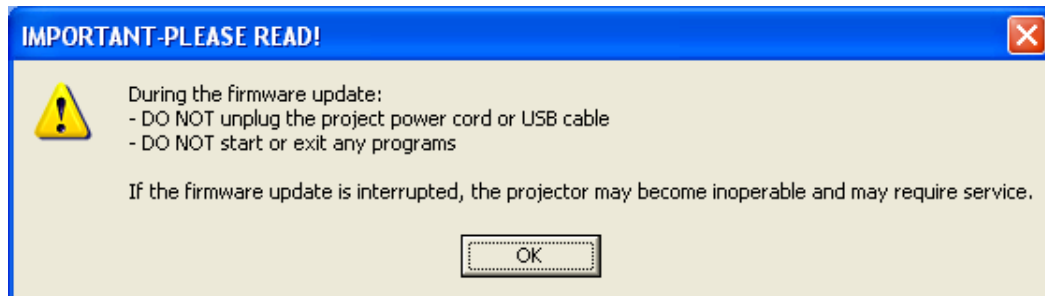
2. Click on Browse and navigate to the image file and click Open



3. Now the Firmware Update utility should detect the projector. Click the Start button



4. After reading the pop-up window click OK



Update will take about 3-4 minutes to complete

5. After the update is complete the projector will power on.
- Click OK on the pop up box
 - Disconnect the power cable and USB cable from the projector.

