

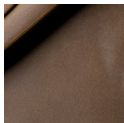


## MONOLITH 48" ADA LED OUTDOOR/INDOOR WALL SCENCE



Item Shown: PNA-7617W-WAVE-NCKL

### Metal Finishes:



Dark Bronze  
(DBRZ)

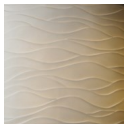


Brushed  
Nickel  
(NCKL)



Matte Black  
(MBLK)

### Impressions:



Waves

### Base Part Number:

PNA-7617W

**DESCRIPTION:** Monolith 48" ADA LED Outdoor/Indoor Wall Sconce

**UL LISTING:** ETL Listed for Wet Locations

### LAMPING:

- LED: 40W 3200 Initial Lumens

**SIZE:** 48" H x 7.75" W x 4" Proj.

**MOUNTING CENTER:** 7"

**OUTDOOR:** Yes

**ADA:** Yes

### PRIMARY SHADE

**MATERIAL:** Faux Porcelain Resin

**IMPRESSIONS:** Waves

**METAL FINISH OPTIONS:** Dark Bronze (DBRZ), Brushed Nickel (NCKL), Matte Black (MBLK)

### OPTIONS AND NOTES:

- Available in smaller sizes (14" H, 20" H, and 36" H)
- Monolith Family includes matching chandeliers. Dedicated LED engine included
- Color Temperature = 3000K
- Minimum CRI = 90
- Dimming is compatible with Incandescent/Triac or ELV dimmers
- Available with an optional marine-grade finish (3-year warranty)
- Title 24 Compliant

Justice Design Group, LLC.  
Los Angeles, California

Telephone: (800) 533-4799 (213) 437-0102  
Fax: (800) 533-2911 (213) 437-0860

Email: [sales@JDG.com](mailto:sales@JDG.com)  
Website: [www.JDG.com](http://www.JDG.com)