



Cleaning Solutions

Guide





Professional Performance, Every Day



For almost 70 years, Betco® has created value through development of high-performing products and programs with proven success. Our customers have chosen Betco for decades, leveraging our expertise in providing powerful, reliable performance in the commercial cleaning industry.

A family-owned business, Betco has a deeply rooted entrepreneurial passion for developing the most dependable processes in the industry. With countless high-achieving products coupled with quality training and support, there's a reason we're our customers' preferred choice.



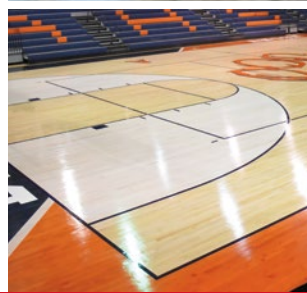
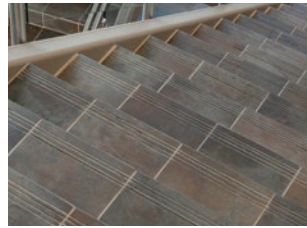


What Do You Get When You Choose Betco?

- National leading brand quality with consistency and powerful performance
- Consultation-based cleaning solutions — turn-key programs that offer value and enhance facilities through right-size solutions
- Best-in-class on-demand training, education, and technology that reaches beyond the product

Contents

<i>Floor Care</i>	4 - 16
<i>General Cleaning</i>	17 - 29
<i>Food Service / Warewash</i>	30 - 38
<i>Laundry</i>	39 - 44
<i>Dilution Control</i>	45 - 49
<i>Hand Hygiene</i>	50 - 55
<i>Equipment</i>	56 - 61
<i>Product Index</i>	62 - 63



Improve the appearance of any substrate throughout each step in the life cycle of floor care

Innovative solutions, equipment, and procedures combine to boost productivity and save labor

High-performing products protect the flooring investment and reduce costly restoration



Floor Care Solutions

The Leading Choice in Floor Care

From resilient tile to carpets, concrete to wood sports floors, and even grouted tile or stone, we have the right solution for every floor, whether you have time constraints for maintenance or want the optimal appearance level. With free best-in-class training, it's never been easier or more affordable to put your best floor forward with a customized program.



VCT STRIPPERS			
GOOD	Geraldine®		
BETTER	Emulsinator®	Ax-It® Plus	
BEST	Unlock®	Extreme®	Extreme® Ultra
VCT SEALERS			
GOOD			
BETTER	Floor Sealer		
BEST	Sure Cure®		
VCT FINISHES			
MAINTENANCE			
POSITIONING	NO - LOW	MEDIUM	FREQUENT
GOOD	Glare®		
BETTER	Hi-Tech®		
	Finish 101™		
BEST	Hard As Nails®		
	BetcoBest® LM		
			Untouchable®
			Photon Max™
			Hybrid™
SPECIALTY	Betco® Express®		
	Green Earth®		

RESILIENT / VCT - FINISHES

Untouchable® with SRT™

Black Mark Resistant Metal Interlocked Floor Finish

3,000 sq. ft. per gallon

Item #	Size
60604-00	4 - 1 Gal. Bottles
606B5-00	5 Gal. Bag in Box
60655-00	55 Gal. Drum



Low maintenance floor finish with Scuff Resistant Technology™.

- Superior black heel mark resistance
- High gloss with minimal burnishing
- Self-sealing
- Extremely low odor
- Superior floor protection

Hard As Nails®

Highly Durable Long Wearing Hard Finish

3,000 sq. ft. per gallon

Item #	Size
65904-00	4 - 1 Gal. Bottles
659B5-00	5 Gal. Bag in Box
65955-00	55 Gal. Drum



Long-wearing hard film formula requires less maintenance.

- Superior wearing, non-scuffing
- Self-leveling, self-sealing
- Resists dirt embedment
- Use on all types of resilient flooring

Photon™ Max

High Gloss Remarkable Response Floor Finish

3,000 sq. ft. per gallon

Item #	Size
632B5-00	5 Gal. Bag in Box
63255-00	55 Gal. Drum



Dramatic gloss response with frequent maintenance.

- Exceptional response to propane, electric, or battery-operated equipment
- Excellent "off the mop" gloss
- Superior soil resistance

RESILIENT / VCT - FINISHES

Hybrid®

Industry's Most Versatile Floor Finish

3,000 sq. ft. per gallon



Versatile extended wear formula provides long lasting shine.

- Extended wear formula
- Versatile, fits low to frequent maintenance applications
- Superior wear resistance for heavy traffic applications
- Use on all types of resilient flooring

Item #	Size
66004-00	4 - 1 Gal. Bottles
660B5-00	5 Gal. Bag in Box
66055-00	55 Gal. Drum

BetcoBest® LM High Build Floor Finish with SRT™

High Build Floor Finish with MMT/50™ Technology

2,500 sq. ft. per gallon



Patented MMT/50™ formula combines high solid content and low viscosity for fewer coats.

- Slashes strip/refinish and top scrub/recoat labor by up to 40%
- Requires half the coats and product of conventional 20% finish
- Maintains high gloss with minimal burnishing
- Scuff Resistant Technology™ provides superior black heel mark resistance

Item #	Size
64404-00	4 - 1 Gal. Bottles
644B5-00	5 Gal. Bag in Box
64455-00	55 Gal. Drum

Betco Express® with SRT™

Fast Drying • Fast Curing Floor Finish • Max Cure™ Technology

5,000 sq. ft. per gallon



Fast dry/cure formula allows up to 6 coats in an hour.

- Coats dry in 10-15 minutes
- Extremely low odor
- Superior black heel mark resistance
- Low to medium maintenance, can be burnished between coats
- Max-Cure Technology™ allows for efficient application

Item #	Size
65804-00	4 - 1 Gal. Bottles
658B5-00	5 Gal. Bag in Box
65855-00	55 Gal. Drum

Glare®

Metal Interlocked Acrylic Polymer Floor Finish

3,000 sq. ft. per gallon



Extended wear, extremely high gloss formula requires less burnishing.

- Durable extended wear provides superior protection
- Black mark and detergent resistant
- Self-leveling, excellent flow for easy application with little to no mop drag
- For use on all types of resilient flooring

Item #	Size
60504-00	4 - 1 Gal. Bottles
605B5-00	5 Gal. Bag in Box
60555-00	55 Gal. Drum

Hi-Tech®

Metal Interlocked Floor Finish

3,000 sq. ft. per gallon



Excellent wet-look shine after burnishing.

- Best product for synthetic rubber floors
- Outstanding performance when paired with high-speed maintenance program
- Self-leveling and self-sealing
- For use on all types of resilient flooring

Item #	Size
61004-00	4 - 1 Gal. Bottles
610B5-00	5 Gal. Bag in Box
61055-00	55 Gal. Drum

Finish 101™

Acrylic Polymer Floor Finish

3,000 sq. ft. per gallon



Efficient build with fewer coats reduces labor.

- Optimal value and performance
- Designed for low maintenance with minimal burnishing
- Deep gloss with bright, clear appearance
- Durable with higher cross link density
- For use on all types of resilient flooring

Item #	Size
69604-00	4 - 1 Gal. Bottles
696B5-00	5 Gal. Bag in Box
69655-00	55 Gal. Drum

RESILIENT / VCT - STRIPPERS

Extreme®

High Power • Fast Acting • Low Odor • No-Rinse Floor Stripper

Concentrate 1:5



Penetrates and removes multiple coats with minimum labor.

- Rinse free, has lower pH and requires no neutralization
- Extremely powerful
- Unlocks chemical bonds of acrylic and urethane floor finishes for efficient stripping
- Use on all types of resilient flooring

Item #	Size
18404-00	4 - 1 Gal. Bottles
184B5-00	5 Gal. Bag in Box
18455-00	55 Gal. Drum

Extreme® Ultra

Ultra Concentrated • Low Odor Floor Stripper

Concentrate 1:20



Powerful acting formula uses less product and works quickly to lower overall costs.

- Ultra-concentrated, less packaging to dispose
- Low odor, reduces unpleasant and obnoxious stripping odors
- Rinse free, requires no neutralization or flood rinsing
- For use on all types of resilient flooring

Item #	Size
19412-00	12 - 32 oz. Bottles
19447-00	4 - 2 Liter FastDraw®
194B5-00	5 Gal. Bag in Box

Unlock™

No-Rinse Floor Stripper

Concentrate 1:5



Penetrates and removes multiple coats quickly with minimum labor.

- Powerful stripping action
- Energy saving formula works with cold water
- Pleasant to use, no harsh ammonia or solvent odors
- Low foaming
- For use on most types of resilient flooring

Item #	Size
88804-00	4 - 1 Gal. Bottles
888B5-00	5 Gal. Bag in Box
88855-00	55 Gal. Drum

Ax-It® Plus

Very Aggressive No-Rinse Stripper

Concentrate 1:10



Powerful formula cuts through layers of old finish in minutes.

- Low foaming
- Rinse free, no alkaline residue
- Use on all types of resilient flooring

Item #	Size
15404-00	4 - 1 Gal. Bottles
154B5-00	5 Gal. Bag in Box
15455-00	55 Gal. Drum

Emulsinator

Aggressive No-Rinse Stripper

Concentrate 1:10



Quickly removes many layers of floor finish in less time with less effort and no rinsing.

- Powerful formula cuts through layers of old finish in minutes
- Rinse free, no alkaline residue
- Low foaming

Item #	Size
151B5-00	5 Gal. Bag in Box

Geraldine®

Non-ammoniated Wax and Finish Stripper

Concentrate 1:10



Unlocks molecular structure of waterbased finishes and sealers.

- Powerful stripping action
- Pleasant to use, no harsh ammonia or solvent odors
- Extended suspension of emulsified particles eliminates costly restriping
- For use on all types of resilient flooring

Item #	Size
104B5-00	5 Gal. Bag in Box
10455-00	55 Gal. Drum

Ax-It®

Baseboard Stripper

Ready-To-Use Aerosol



Fast-acting gel dissolves soil and finish build-up.

- Cleans and strips where a floor machine cannot reach
- Convenient and easy-to-use aerosol
- Rinse free formula leaves no alkaline residue

Item #	Size
09923-00	12 - Aerosol Cans

RESILIENT / VCT - SEALERS

Floor Sealer

Metal Interlocked Acrylic Polymer Floor Sealer

2,000 sq. ft. per gallon



Provides durable uniform base to protect floor finishes.

- Compatible with all water-based finishes or waxes
- High gloss enhances the appearance of the finish
- Acrylic polymer provides long-lasting, durable protection
- Perfect for providing a smooth surface on worn and damaged tiles
- For use on all types of resilient flooring

Item #	Size
60704-00	4 - 1 Gal. Bottles
607B5-00	5 Gal. Bag in Box
60755-00	55 Gal. Drum

Sure Cure™

Acrylic / Urethane Sealer

2,000 sq. ft. per gallon



Fortified waterbased urethane formula.

- Adheres to a variety of hard surface floors
- Long-lasting protection and abrasion resistance
- Labor saving, high solids require fewer coats
- For use on concrete, resilient flooring, and stone

Item #	Size
60904-00	4 - 1 Gal. Bottles
609B5-00	5 Gal. Bag in Box
60955-00	55 Gal. Drum

RESILIENT / VCT - RESTORERS / CLEANERS

Easy Task™

Thermoplastic Spray Buff

Concentrate 1:5



Effective repair of all floor finish types.

- Versatile - the perfect product for use with conventional and high speed equipment
- Provides excellent lubricity to pad surface for a higher shine
- Regular use allows reduces stripping and rewaxing procedures by 75%

Item #	Size
60812-00	12 - 32 oz. Bottles
60804-00	4 - 1 Gal. Bottles

Betco® One Step

High Speed Cleaner • Restorer

Concentrate 1:128



One step product reduces labor cost and need to recoat.

- Improves burnish response to repair scuffs and restore gloss
- Helps correct slippery floors and eliminates powdering
- Product certified for reduced environmental impact
- For use on resilient tile, linoleum, quarry tile, stone, terrazzo and vinyl tile

Item #	Size
61812-00	12 - 32 oz. Bottles
61804-00	4 - 1 Gal. Bottles
61847-00	4 - 2 Liter FastDraw®
61805-00	5 Gal. Pail

pH7

Daily Floor Cleaner

Concentrate 1:64



Dissolves and removes a wide variety of soils, leaving floors film free.

- Neutral pH - Won't attack, haze, dull floor gloss or leave a film
- Restores shine to resilient tile floors
- Superior hard water performance
- Controlled foam, ideal for use in autoscrubbers, mop buckets, and spray bottles

Item #	Size
13804-00	4 - 1 Gal. Bottles
138B5-00	5 Gal. Bag in Box
13855-00	55 Gal. Drum
13827-00	275 Gal. Tote

pH7 Ultra

Daily Floor Cleaner

Concentrate 1:256



Dissolves and removes a wide variety of soils, leaving floors film free.

- Neutral pH won't dull floor finish or leave a film
- Super concentrated for low end use cost
- Low foam - perfect for automatic scrubber applications
- Effective in hard water
- Available in solids that generate 350 gallons of solution each, generating up to 80% savings versus liquid

Item #	Size
17848-00	6 - 32 oz. FastDose™
17847-00	4 - 2 Liter FastDraw®
17805-00	5 Gal. Pail
17855-00	55 Gal. Drum
819E3-00	4 - 575 Gram SoliChem*

*For use only with Betco® GeneSys™ scrubbers

Daily Scrub SC

Floor Cleaner

Concentrate 1:256 - 1:1024



Streak-free performance even on heavily soiled floors.

- Great for use with a mop and bucket or automatic scrubber
- Economical and versatile concentration
- Excellent for scrub and recoat programs at stronger dilutions
- Provides a durable clean; extends time between costly strip-outs

Item #	Size
18847-00	4 - 2 Liter FastDraw®
18848-00	6 - 32 oz. FastDose™

Best Scrub

High Performance Top Scrub Floor Cleaner

Ready-To-Use



For interim top scrubbing prior to finish recoat.

- Effectively removes top coats of finish without attacking bottom layers
- Pleasant fragrance, no harsh odors
- Low foaming, virtually no foam in scrubber recovery tanks
- No residue, does not require flood rinsing

Item #	Size
67004-00	12 - 32 oz. Bottles
67005-00	5 Gal. Pail

pHperfect

Ice Melt Remover Floor Conditioner

Concentrate 1:15 - 1:54



Dual performance formula penetrates and neutralizes in one step.

- Perfect for entryways, resilient tile, terrazzo, ceramic tile and porcelain tile
- Formulated with neutralizing agents and surfactants to penetrate and clean tough soils and neutralize common ice melt ingredients
- Excellent floor conditioner after strip outs
- Leaves virtually no residue on the floor

Item #	Size
53304-00	4 - 1 Gal. Bottles

Fortify™ Foam Control

Concentrated Solid Antifoam Puck



Quickly penetrates and knocks down foam to eliminate problems associated with recovery tank foaming.

- Fast acting, breaks foam on contact
- Saves time, eliminates downtime and wasted effort in dumping recovery tanks
- Versatile, can be used in Betco's GeneSys™ scrubber series and put into the debris tray of other auto scrubber tanks

Item #	Size
820E3-00	4 - 275 Gram Pucks
Grease Solv Combo Pack	
92493E4-00	4 - 575 Gram Solids 4 - 275 Gram Pucks
pH7 Ultra Combo Pack	
92686E4-00	4 - 575 Gram Solids 4 - 275 Gram Pucks

Grease Solv - See pg. 22, pH7 Ultra - See pg. 8.
*Solid cleaners only for use with Betco® GeneSys Scrubber.

LVT

Rescue Gloss

LVT / Multi-Surface Floor Finish

2,000 - 3,000 sq. ft. per gallon



Protects and extends lifespan of low maintenance floors.

- Designed specifically for low and no maintenance floors
- Best adhesion in class
- Low maintenance, durable formula
- For use on LVT and most other flooring types

Item #	Size
168104-00	4 - 1 Gal. Bottles
1681B5-00	5 Gal. Bag in Box

Rescue TruMatte

LVT / Multi-Surface Floor Finish

2,000 - 3,000 sq. ft. per gallon



Protects and extends lifespan of low maintenance floors.

- Best adhesion in its class
- TruMatte technology provides natural look
- Low maintenance, durable formula
- For use on LVT and most other flooring types

Item #	Size
168204-00	4 - 1 Gal. Bottles

Recover

LVT / Multi-Surface Stripper

Concentrate 1:10



Removes multiple coats of metal interlock acrylic floor finish.

- Safe for LVT, sheet vinyl, linoleum, rubber and most all no/low maintenance floors
- Safely removes multiple coats of finish
- Low odor
- Low pH

Item #	Size
168404-00	4 - 1 Gal. Bottles
168B5-00	5 Gal. Bag in Box

Reinforce

Daily Cleaner and Protectant

Concentrate 1:64



Neutral cleaner continually repairs abrasions with daily cleaning.

- Keeps floors looking cleaner longer
- Proprietary blend of surfactants, polymers and waxes
- Safe for LVT, sheet vinyl, rubber, linoleum and most flooring types
- Works on polished VCT floors to clean and repair minor scuffs and scratches

Item #	Size
168312-00	12 - 32 oz. Bottles
168347-00	4 - 2 Liter FastDraw®
168304-00	4 - 1 Gal. Bottles
168348-00	6 - 32 oz. Dosing Bottles



SUSTAINABLE

Green Earth® Floor Finish
Non-Zinc Floor Finish and Sealer

3,000 sq. ft. per gallon



Versatile extended wear formula provides long lasting shine.

- Extended wear formula
- Versatile, fits low to frequent maintenance applications
- Superior wear resistance for heavy traffic areas

Item #	Size
542B5-00	5 Gal. Bag in Box
54255-00	55 Gal. Drum

Green Earth® Floor Stripper

Non-Butyl • Non-Ammoniated Floor Stripper

Concentrate 1:5



Specially formulated to remove Green Earth® and other conventional floor finishes.

- Strips effectively without the use of butyl and ammonia
- Rinse free formula, low foaming
- No added fragrance or dyes

Item #	Size
541B5-00	5 Gal. Bag in Box
54155-00	55 Gal. Drum

Green Earth® Daily Floor Cleaner

Neutral pH Low Foaming Floor Cleaner

Concentrate 1:256



Emulsifies, removes soil from highly polished floor surfaces.

- Neutral pH
- Wets, emulsifies and suspends soils
- All ingredients are readily biodegradable
- Deodorizes surfaces

Item #	Size
53647-00	4 - 2 Liter FastDraw®
53604-00	4 - 1 Gal. Bottles
53655-00	55 Gal. Drum

CRETE RX™ PROCOAT CLEANING & COATING SYSTEM

Crete Rx™ LiquiShield
Concrete Guard

2,000 - 3,000 sq. ft. per gallon



Advanced protection against stain and etch.

- Ideal for all pre-polished, non-polished, and previously coated concrete and terrazzo surfaces
- High gloss polymer formula
- Will not peel, flake, or discolor
- Resists black marks and soiling
- Water-based formula with low VOCs and odor

Item #	Size
167904-00	4 - 1 Gal. Bottles

Crete Rx™ LiquiStrip

Concentrated Stripper for Permanent Coatings

Concentrate 1:3



Stripper formulated to remove permanent coatings.

- Strips coatings without the use of diamond tooling
- Quickly removes permanent concrete guards and finishes
- Ultra-concentrated formula for low end use cost
- Rinse-free, non-flammable, and low odor

Item #	Size
167804-00	4 - 1 Gal. Bottles



CRETE RX™ PROGRIND HONING & POLISHING SYSTEM

Crete Rx™ Densifier Ready-to-Use Densifying Compound

Up to 2,000 sq. ft. per gallon

Item #	Size
167105-00	5 Gal. Pail



Improves abrasion and wear resistance along with improved chemical resistance.

- For use in polishing concrete
- Nanoparticle silicate chemistry strengthens and hardens polished concrete
- Aids in lowering concrete dusting
- Intended for use following honing step in restorative maintenance process

Crete Rx™ Stain Defense Ready-to-Use Penetrating Sealer

Up to 4,000 sq. ft. per gallon

Item #	Size
167205-00	5 Gal. Pail



Penetrating polymers fill porous concrete to prevent stains and etch.

- For use in polishing concrete
- Creates uniform, continuous protective surface
- Resists staining and etching
- Interacts with sealant infused polymers

Crete Rx™ LiquiGrind Ready-To-Use Honing Compound

In Solution Tank: 1:64
On Floor: Up to 1,000 sq. ft. per gallon

Item #	Size
167005-00	5 Gal. Pail



Nanoparticle abrasive provides maximum coverage for increased efficiency.

- For use in polishing concrete
- Assists in removing excessive wear and etching
- Works with grinding and honing tools to remove wear and etching

Crete Rx™ Concrete Stain Removal Kit

Ready-To-Use

Item #	Size
92411-00	12 - 32 oz. Bottles



Combines all Crete Rx™ products needed for stain removal in one ready-to-use kit.

- LiquiGrind assists in removing wear and etching
- Densifier strengthens and hardens polished concrete
- Stain Defense penetrates open pores and creates a uniform continuous protective surface
- Convenient kit allows for spot stain remediation

Crete Rx™ DensiClean Cleaner Concentrate with Densifier

Concentrate 1:256

Item #	Size
67912-00	12 - 32 oz. Bottles
67947-00	4 - 2 Liter FastDraw®
67955-00	55 Gal. Drum
67970-00	6 - 32 oz. Bottles



For use on polished concrete.

- Advanced cleaning formula with proprietary silicate chemistry
- Maintains hardness while suspended the toughest soils
- Free lime content is greatly reduced
- Less labor spent on dust mitigation

Crete Rx™ SI Cleaning Pads Sealant-Infused Pads

Item #	Size
E84111-00	5 - 11" Pads
E84112-00	5 - 12" Pads
E84113-00	5 - 13" Pads
E84114-00	5 - 14" Pads
E84115-00	5 - 15" Pads
E84116-00	5 - 16" Pads
E84117-00	5 - 17" Pads
E84120-00	5 - 20" Pads



For use with DensiClean on polished concrete to suspend the toughest soils while strengthening floor surface.

- Continually fill porous concrete with sealant, pushing it into the concrete itself
- Provides excellent protection and deep gloss
- Circumvents the need for a topical film

Crete Rx™ SI Burnishing Pads Sealant-Infused Pads

Item #	Size
E84121-00	5 - 21" Pads
E84124-00	5 - 24" Pads
E84127-00	5 - 27" Pads



With an outstanding burnishing response, SI Burnishing Pads significantly pop gloss while strengthening floor surface.

- Infuses polished concrete and terrazzo with sealant to fill pores
- Improves gloss and protection
- Circumvents the need for a topical film

CRETE RX™ PROGRIND HONING & POLISHING SYSTEM

Crete Rx™ Reset Tool

Up to 300,000 sq. ft. per tool



Quickly smooths out rough, worn areas of long neglected concrete floors.

- Abrasive strength removes excessive finish and film accumulation and eliminates pitting
- Prepares polished concrete floors for grinding
- Use with an auto scrubber, avoiding the need for an expensive, dedicated concrete machine

Item #	Machine Model	Size
E030005-00	Crewman 20" HD & Foreman 20DS	3 - Tools / cs.
E030010-00	Genesys 20"	3 - Tools / cs.
E030023-00	Genesys 32D	3 - Tools / cs.
E030033-00	DRS32BT	3 - Tools / cs.

Crete Rx™ Step 1 Grind Tool, Blue

Up to 300,000 sq. ft. per tool



Effortlessly eliminates light coatings, worn sealers, floor finishes, and excessive wear from concrete and terrazzo surfaces.

- Achieve a uniform pattern across the entire floor, creating a more even and open surface
- Prepares floor for honing in as few as 5 passes
- Use with an auto scrubber, avoiding the need for an expensive, dedicated concrete machine

Item #	Machine Model	Size
E030001-00	Crewman 20" HD & Foreman 20DS	3 - Tools / cs.
E030006-00	Genesys 20"	3 - Tools / cs.
E030011-00	Genesys 26D	3 - Tools / cs.
E030015-00	Genesys 28D	3 - Tools / cs.
E030019-00	Genesys 32D	3 - Tools / cs.
E030024-00	DRS26BT	3 - Tools / cs.
E030029-00	DRS32BT	3 - Tools / cs.

Crete Rx™ Step 2 Hone Tool, Green

Up to 450,000 sq. ft. per tool



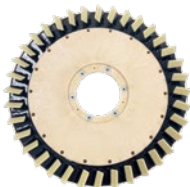
Elevate concrete or cementitious terrazzo floors to a smooth, consistent surface.

- Accelerates the process while delivering superior, professional-grade results
- Prepares floors for polishing in as few as 5 passes
- Use with an auto scrubber, avoiding the need for an expensive, dedicated concrete machine

Item #	Machine Model	Size
E030002-00	Crewman 20" HD & Foreman 20DS	3 - Tools / cs.
E030007-00	Genesys 20"	3 - Tools / cs.
E030012-00	Genesys 26D	3 - Tools / cs.
E030016-00	Genesys 28D	3 - Tools / cs.
E030020-00	Genesys 32D	3 - Tools / cs.
E030025-00	DRS26BT	3 - Tools / cs.
E030030-00	DRS32BT	3 - Tools / cs.

Crete Rx™ Step 3 Polish Tool, Tan

Up to 600,000 sq. ft. per tool



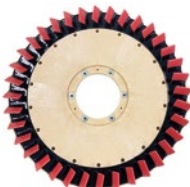
Achieve a flawless, even, and polished finish on concrete and terrazzo floors.

- Perfects the surface for a brilliant and lasting result
- Prepares floors for shining in as few as 5 passes
- Use with an auto scrubber, avoiding the need for an expensive, dedicated concrete machine

Item #	Machine Model	Size
E030003-00	Crewman 20" HD & Foreman 20DS	3 - Tools / cs.
E030008-00	Genesys 20"	3 - Tools / cs.
E030013-00	Genesys 26D	3 - Tools / cs.
E030017-00	Genesys 28D	3 - Tools / cs.
E030021-00	Genesys 32D	3 - Tools / cs.
E030026-00	DRS26BT	3 - Tools / cs.
E030031-00	DRS32BT	3 - Tools / cs.

Crete Rx™ Shine Tool, Red

Up to 2000,000 sq. ft. per tool



Effortlessly maintain and sustain your floor's appearance with regular use.

- Unlock an unmatched level of gloss
- Ensure a high shine and clarity that stands the test of time
- For use on an auto scrubber

Item #	Machine Model	Size
E030004-00	Crewman 20" HD & Foreman 20DS	3 - Tools / cs.
E030009-00	Genesys 20"	3 - Tools / cs.
E030014-00	Genesys 26D	3 - Tools / cs.
E030018-00	Genesys 28D	3 - Tools / cs.
E030022-00	Genesys 32D	3 - Tools / cs.
E030027-00	DRS26BT	3 - Tools / cs.
E030032-00	DRS32BT	3 - Tools / cs.



For non-Betco powered equipment, use our Tool Selector Guide.



STONE, TILE & GROUT

STG Cleaner

Daily Cleaner and Protectant

Concentrate 1:64



Penetrates and protects porous grout, tile and natural stone with every cleaning.

- Easy Clean Technology extends time between cleaning cycles
- Keep floors looking cleaner longer
- Can be used daily in restrooms, kitchens, retail spaces and many others!
- Proprietary blend of surfactants, emulsifiers and repellency aids

Item #	Size
168512-00	12 - 32 oz. Bottles
168547-00	4 - 2 Liter FastDraw®
168504-00	4 - 1 Gal. Bottles

STG Penetrating Sealer

Stone, Tile, and Grout Penetrating Sealer

2,000 - 3,000 sq. ft. per gallon



Top in class stain resistance and durable for up to 1 year in high traffic applications.

- Semi-permanent protection from stain and soil embedment
- Effective on all types of tile, grout and natural stone surfaces
- The original beauty of your floor will shine through as it does not change the floor's appearance

Item #	Size
168604-00	4 - 1 Gal. Bottles

CARPET CARE - CLEANERS / PRE-SPRAYS

FiberCAP™ MP

Multi-Purpose Encapsulation Cleaner

Concentrate 1:10 - 1:32



Advanced polymer technology enhances soil entrapment, providing better release from carpet fiber.

- Leaves carpets cleaner, longer
- Low moisture, fast drying
- Minimizes resoiling
- Multi-purpose, versatile cleaner

Item #	Size
42004-00	4 - 1 Gal. Bottles

FiberPRO® Es-Steam™

Low Foam Extraction Cleaner

Concentrate 1:256



Highly concentrated formula delivers powerful cleaning action at an affordable price.

- Rinses easily and leaves no residue
- Contains patented deodorizing counteractant, eliminates odors at the source
- Penetrates heavy soils
- For use on carpeting, excluding stain resistant carpeting

Item #	Size
40247-00	4 - 2 Liter FastDraw®
40204-00	4 - 1 Gal. Bottles
40255-00	55 Gal. Drum

FiberPRO® Extraction Cleaner

5th Generation Extraction Cleaner

Concentrate 1:256



Powerful low-foaming surfactant blend unlocks soil and dirt for easy removal.

- Economical, highly concentrated formula
- Low residue, rinses freely so carpets stay cleaner, longer
- Contains patented deodorizing counteractant, eliminates odors at the source
- For use on all types of carpeting and upholstery, including stain resistant carpeting

Item #	Size
41204-00	4 - 1 Gal. Bottles

FiberPRO® BonBet™

Carpet Shampoo

Concentrate 1:8



Fast drying formula dries in less than one hour when used as directed.

- Intended for use with dry or wet bonnet methods
- Powerful blend quickly removes oil, grease, and soils
- For use on all types of carpeting and upholstery, including stain resistant carpeting

Item #	Size
40804-00	4 - 1 Gal. Bottles

FiberPRO® TLC

Traffic Lane Cleaner Concentrate

Concentrate 1:20



Labor saving solvent quickly emulsifies the worst ground-in soil problems.

- Economical, highly concentrated detergent solvent blend
- Can also be used as a booster for rotary and extraction methods
- For use on carpeting, excluding stain resistant carpeting

Item #	Size
40604-00	4 - 1 Gal. Bottles

Also Used as Carpet Pre-Spray: Green Earth® Peroxide Cleaner - See p. 18.

Also Used as Carpet Sanitizers: Triforce - See p. 26, GE Fight-Bac™ RTU - See p. 28.

CARPET - SPOTTERS

FiberPRO® Spot Bet
All Purpose Spot and Stain Remover

Ready-To-Use

Item #	Size
42512-00	12 - 32 oz. Bottles



Versatile cleaner effectively removes common stains.

- Effective spotter for use in health care settings; removes betadine and iodine stains
- Quickly unlocks soil from fibers
- Removes most common stains

FiberPRO® Red 'N' Brown Out
Red Stain • Tannin Debrowner Treatment • RTU

Ready-To-Use

Item #	Size
41904-00	4 - 1 Gal. Bottles



Powerful dual acid stain removal performance.

- Eliminates browning caused by alkaline build-up from shampoo residue
- Dual acid formula removes difficult, stubborn stains
- Can be used as a final rinse after extracting
- For use on all types of carpet, rugs, and upholstery

FiberPRO® Gum Remover

Ready-To-Use

Item #	Size
00923-00	12 - 6.5 oz. Aerosol Cans



Fast-freezing action hardens gum and wax for quick removal.

- Convenient, easy-to-use aerosol
- Does not leave a residue
- Allows for a more efficient clean than solvents
- For use on most surfaces including carpet, rugs, and upholstery

Also Used as Carpet Spotters: Green Earth® Peroxide RTU and Push® - See p. 18

CARPET - FOAM CONTROL

FiberPRO® Foam Control
Liquid Defoamer

Concentrate 1:128

Item #	Size
40304-00	4 - 1 Gal. Bottles
40355-00	55 Gal. Drum



Fast acting, breaks foam on contact.

- Eliminates downtime and wasted effort in dumping recovery tanks
- Versatile, has many uses and can be used anywhere foaming is a problem
- Use in recovery tanks of extraction machines

SPORTS ZONE® WATERBASED WOOD FLOOR COATINGS

StreetShoe® NXT

Waterbased High Traffic Wood Floor Finish

Up to 450 - 650 sq. ft. per gallon



Waterbased system formulated specifically for high traffic wood floors.

- Provides a clear finish that remains unmatched in durability
- Fastest cure available, 90% cured in 24 hours
- UV Inhibitor minimizes sunlight-related color changes
- Apply directly over stain, easy application

Item #	Size
B1664-4312	4 - 1 Gal. F-Style w/Catalyst
166405-00	5 Gal. Pail in Box w/Catalyst

GymShoe®

Two Component Waterbased Sport Floor Finish

Up to 500 - 700 sq. ft. per gallon



Exceptionally durable high-traffic sport floor finish.

- Clear, non-yellowing urethane
- 24 hour pot life: once catalyzed, can be re-catalyzed
- Great shine, resists heel marks
- Fast drying, 2-3 hours
- Powders well during application
- Perfect for large sport complexes, higher education, retail and commercial spaces

Item #	Size
B1677-4312	4 - 1 Gal. F-Style w/Catalyst
167705-00	5 Gal. Pail in Box w/Catalyst

Player's Choice™ One

Clear Waterbased Sport Floor Finish

Up to 500 - 750 sq. ft. per gallon



One component waterbased finish specially formulated for sports floor applications.

- Exceptional durability
- Easy maintenance
- Excellent chemical and perspiration resistance
- Superior flow, leveling, and low foam formula
- Low, non-offensive odor

Item #	Size
B1659-4312	4 - 1 Gal. F-Style w/Catalyst
B1659-0512	5 Gal. Pail

Emulsion® PRO+

Advanced Oil and Water Wood Floor Finish and Sealer

Up to 450 - 550 sq. ft. per gallon



Commercial grade self-leveling sealer and finish.

- One-component extended pot life
- Ambering, enhances beauty of wood
- Is not OMI, non-flammable
- VOC Compliant in US and Canada
- Low odor

Item #	Size
B0675-4312	4 - 1 Gal. F-Style w/Catalyst
B0675-0512	5 Gal. Pail

SPORTS ZONE® WATERBASED WOOD FLOOR MAINTAINERS

Squeaky™ Floor Cleaner

Maintenance Cleaner for Wood Floors

Concentrate 1:4, 1:32, 1:64



Tough on dirt, gentle on floors and cleans without leaving a residue.

- Commercial-grade cleaner for all wood and laminate floors
- No dulling residue
- Excellent choice for routine cleaning
- Environmentally safe
- First step in TyKote® Dust-free Refinishing System

Item #	Size
B0695-4312	4 - 1 Gal. Bottles
B0695-0512	5 Gal. Pail

Game Time Cleaner

Maintenance Cleaner for Wood Floors

Concentrate 1:64



For use on sport and commercial wood floors.

- Cleans and removes abrasive soils
- Fast drying
- Leaves no residue
- Restores traction for sports floors
- Versatile - use for daily and periodic maintenance

Item #	Size
B069747-00	4 - 2 Liter FastDraw®

SPORTS ZONE® WOOD FLOOR MAINTAINERS

I.F.T. Intensive Floor Treatment
Aggressive Wood Floor Cleaner

Concentrate 1:32

Item #	Size
B1111-0412	4 - 1 Gal. Bottles



Aggressive cleaner, will easily remove ground-in dirt and much more.

- Deep, intensive cleaning
- Effectively removes scuffs and black marks
- I.F.T. is the first step in a two-part cleaning process to prepare floors for TyKote® Dust-free Refinishing System

Dust Mop Treatment
Use on Mops, Cloths, and Filters

Ready-To-Use

Item #	Size
03523-00	12 - 17 oz. Aerosol Cans



Unique formula attracts dust and dirt while prolonging floor appearance when paired with proper dust mopping procedures.

- Treated cloths and mops may be used within 15 minutes of treatment
- Will not cause streaking or leave a film - Pleasant fragrance
- For use on carpeting, excluding stain resistant carpeting

DM120
Dust Mop Treatment

Ready-To-Use

Item #	Size
12004-00	4 - 1 Gal. Bottles
12055-00	55 Gal. Drum



Treats dust mops / cloths for dust mopping.

- Attracts dust and dirt
- Holds dust like a magnet
- Brightens surfaces
- Economical
- Penetrates mop fibers

TyKote®
Wood Floor Bonding Agent

2,500 - 3,000 sq. ft. per gallon

Item #	Size
B0691-4312	4 - 1 Gal. F-Style



Revolutionary bonding agent used between existing floor and new topcoat.

- Eliminates the dust, noise, and mess of traditional recoating methods
- Fast: recoat tonight, back in business tomorrow
- Simple and inexpensive process
- Works with site-finished and most prefinished wood floors

SPORTS ZONE® WOOD FLOOR APPLICATORS

Heavy Weight Bar
18" / 24" Application Bar

Item #	Size
91185-00	1 - 18" Bar Only
91174-00	1 - 24" Bar with Handle



For use on sport and commercial wood floors.

- Consistent and even coverage
- Applies a thicker coat
- Applies finish smoothly and lint-free
- Streak and bubble-free application

Applicator Refill Pads
Refill Pads for Heavy Weight Bar

Item #	Size
92426-00	20 - 18" Pad Refills
92427-00	20 - 24" Pad Refills



Thousands of microfibers ensure smooth and beautiful finish.

- Applies finish in a smooth, lint free coat
- Streak and bubble-free finish application
- Tapered ends for better maneuverability
- For use with medium or heavy weight T-bar



With 450+ high-performing formulations, our breadth and depth of line conquer any cleaning challenge

From quarts to totes and ready-to-use to concentrates, Betco offers a size and format for everyone

Sustainable products have verified performance and compliance with health/ environmental standards



General Cleaning Solutions

Professional Products, Powerful Clean

Betco products clean and deodorize entire facilities in diverse vertical markets every day. Our comprehensive line features all-purpose cleaners to quickly remove filth from a variety of surfaces, degreasers to penetrate tough oil-based soils, products to keep restrooms hygienic and spotless, and hospital-grade disinfectants to stop the spread of illness-causing germs.



ALL PURPOSE

Top Flite™
All Purpose Cleaner Concentrate

Concentrate 1:20 - 1:64



Suspends the toughest soils and prevents them from redepositing on the surface.

- Versatile product, suitable for mop and bucket, spray and sponge applications
- Can be used as a top scrub cleaner in scrub and recoats
- Extremely effective in hard water
- Safe for use on most hard surfaces

Item #	Size	Item #	Size
15012-00	12 - 32 oz. Bottles	15005-00	5 Gal. Pail
15048-00	6 - 32 oz. FastDose™	15055-00	55 Gal. Drum
15047-00	4 - 2 Liter FastDraw®	15027-00	275 Gal. Tote
15004-00	4 - 1 Gal. Bottles		

Spectaculoso™
Lavender Multi-Purpose Cleaner

Concentrate 1:64



Cleans and deodorizes a variety of surfaces.

- Highly effective on most water washable surfaces
- Concentrated formula saves money
- Effective even in hard water; suspends soils and prevents them from redepositing on the surface
- Rinse-free

Item #	Size
102347-00	4 - 2 Liter FastDraw®
100304-00	1 - Gal. Bottle
100355-00	55 Gal. Drum

Green Earth® Peroxide Cleaner
Concentrated Hydrogen Peroxide All Purpose Cleaner

Concentrate 1:10 - 1:64



Clean with the power of peroxide.

- Will not damage clothing like traditional bleach cleaners
- Removes mineral deposits and soap scum from a variety of bathroom surfaces
- Daily cleaner

Item #	Size
33604-00	4 - 1 Gal. Bottles
33647-00	4 - 2 Liter FastDraw®
336B2-00	2 - 2 Liter FastDraw®
33655-00	55 Gal. Drum

Green Earth® RTU Peroxide Cleaner
Ready-To-Use Multi-Purpose Cleaner

Ready-To-Use



Cleans floors, showers, glass and other hard surfaces.

- Removes mineral deposits, hard water build up and soap scum from a variety of restroom surfaces
- Will not damage clothing like traditional bleach cleaners
- Daily cleaner

Item #	Size
32912-00	12 - 32 oz. Bottles

Push®
Probiotic All Purpose Cleaner and Odor Eliminator

Ready-to-Use, 1:16-1:64



Use on any hard surface, drain maintenance, carpet stain removal, and odor mitigation.

- Contains enzyme producing bacteria to digest complex proteins, fats, greases, and odors
- Non-corrosive, non-flammable, non-acidic and non-caustic
- Available in three great scents - Classic Mint, Lemon and Sage, Mango

Item #	Size	Lemon and Sage	
	Classic Mint	260712-00	12 - 32 oz. Bottles
13312-00	12 - 32 oz. Bottles	260704-00	4 - 1 Gal. Bottles
13347-00	4 - 2 Liter FastDraw®	260747-00	4 - 2 Liter FastDraw®
13304-00	4 - 1 Gal. Bottles		Mango
13305-00	5 Gal. Pail	260812-00	12 - 32 oz. Bottles
13355-00	55 Gal. Drum	260804-00	4 - 1 Gal. Bottles

Citrufoam
Citrus All Purpose Cleaner

Ready-To-Use



Clinging foam provides extended contact time when cleaning vertical and inverted surfaces.

- Deodorizes and removes objectionable odors at the source
- Fortified with natural citrus solvents
- Lifts a variety of stubborn stains
- For use on most washable surfaces

Item #	Size
06623-00	12 - 19 oz. Aerosol Cans

Top Flite™ Plus
Industrial All Purpose Cleaner

Ready-To-Use



Clinging foam and powerful formula easily removes stubborn soils.

- Emulsifies grease, oil, and much more for easy removal
- One of the most powerful aerosol foam cleaners available
- For use on most hard surfaces

Item #	Size
05923-00	12 - 19 oz. Aerosol Cans

ALL PURPOSE

Green Earth® Natural All Purpose Cleaner
Hard Surface Cleaner

Concentrate 1:10 - 1:64



This versatile and dilutable cleaner quickly and effectively removes a variety of soils from any surface not harmed by water.

- Clean virtually anything with the power of nature
- Dilutable product for light, medium or heavy duty soils
- Will not streak or smear

Item #	Size
19847-00	4 - 2 Liter FastDraw®
19804-00	4 - 1 Gal. Bottles
19855-00	55 Gal. Drum

Green Earth® Glass Cleaner
Streak Free Glass and Surface Cleaner

Concentrate 1:64



The perfect product for glass, mirrors and many hard surfaces.

- Cleans and polishes without scratching, streaking, fogging or clouding
- Concentrated for effective and economical use

Item #	Size
53547-00	4 - 2 Liter FastDraw®
53504-00	4 - 1 Gal. Bottles

Clear Image Concentrate
Non-Ammoniated Glass and Surface Cleaner

Concentrate 1:64



Cleans and polishes glass and plastics without scratching, streaking, fogging, or clouding.

- Powerful cleaning agents cut through grease, smudges, fingerprints, and soils
- Convenient and pleasant to use, no ammonia odor
- For use on mirrors, glass, plastic, and most hard surfaces, including tinted windows and plexiglass

Item #	Size
19947-00	4 - 2 Liter FastDraw®

Clear Image
Non-Ammoniated Glass and Surface Cleaner

Ready-To-Use



Streak free formula, leaves no film.

- Non-ammoniated, no harsh fumes
- Powerful cleaning agents remove tough soil
- Convenient ready-to-use formulation
- For use on mirrors, glass, plastic and most hard surfaces

Item #	Size
19212-00	12 - 32 oz. Bottles
19204-00	4 - 1 Gal. Bottles
19255-00	55 Gal. Drum

Clear Image Aerosol
Non-Ammoniated Glass and Surface Cleaner

Ready-To-Use



Cleans and polishes glass and plastics without scratching, streaking, fogging and clouding.

- Convenient and pleasant to use, no ammonia odor
- Can be used on plexiglas and tinted windows
- Convenient aerosol package

Item #	Size
09223-02	12 - 19 oz. Aerosol Cans

Deep Blue Concentrate
Ammoniated Glass and Surface Cleaner

Concentrate 1:64



Fortified with ammonia for heavy duty cleaning with no streaks.

- Cleans and brightens most hard surfaces
- Dissolves smoke, grease and smudge marks
- For use on mirrors, glass, stainless steel, porcelain, chrome and most hard surfaces

Item #	Size
18148-00	6 - 32 oz. FastDose™
18147-00	4 - 2 Liter FastDraw®

Deep Blue
Ammoniated Glass and Surface Cleaner

Ready-To-Use



Penetrates and dissolves stubborn soils while polishing hard surfaces.

- Cleans and brightens most hard surfaces
- Fortified with ammonia for powerful cleaning
- Dissolves smoke, grease, smudge marks, and more
- For use on mirrors, glass, stainless steel, porcelain, and most hard surfaces

Item #	Size
10812-00	12 - 32 oz. Bottles
10804-00	4 - 1 Gal. Bottles
10855-00	55 Gal. Drum



ALL PURPOSE

Deep Blue Aerosol

Ammoniated Glass and Surface Cleaner

Ready-To-Use

Item #	Size
09023-00	12 - 19 oz. Aerosol Cans



Convenient aerosol with clinging foam cuts through grease and smudges.

- Clinging foam cuts through grease, smudges, fingerprints and soils
- Fortified with ammonia to clean and dry quickly
- Cleans and brightens most hard surfaces
- Perfect for inverted or vertical cleaning

Deep Blue Concentrate 1:20

Ammoniated Glass and Surface Cleaner

Concentrate 1:20

Item #	Size
28112-00	12 - 32 oz. Bottles
28104-00	4 - 1 Gal. Bottle



Powerful glass cleaner dissolves smoke, grease, and smudge marks.

- Fortified with ammonia for powerful cleaning
- Polishes and brightens glass and window surfaces
- Quickly penetrates dust and grime

Stainless Steel Cleaner & Polish Aerosol

Stainless Steel Cleaner and Brightener

Ready-To-Use

Item #	Size
06523-00	12 - 19 oz. Aerosol Cans



Cleans, polishes, brightens and protects.

- Convenient easy-to-use aerosol package
- Polishes easily leaving no greasy film
- Easily removes tough oil-based stains as well as water spots, spills, and food soils
- For use on aluminum, ceramic tile, chrome, porcelain and stainless steel

Lemon Furniture Polish

Natural Lemon Oil Furniture Polish

Ready-To-Use

Item #	Size
06023-00	12 - 19 oz. Aerosol Cans



Natural lemon conditions, re-moisturizes, and protects fine woods without build-up.

- Cleans and removes wax build-up
- Repairs minor scratches and cracks
- For use on woodwork, vinyl, plastic, laminate and metal

Betco® Brite MSP

High Gloss Multi-Surface Polish • Protectant

Ready-To-Use

Item #	Size
15512-00	12 - 32 oz. Bottles
15555-00	55 Gal. Drum



Cleans, polishes, and protects a variety of surfaces.

- Protects surfaces against fingerprints and smudges
- Conditions wood and leather
- Natural lemon oil provides a fresh fragrance.
- Rubs out easily to a hard shine
- For use on woodwork, vinyl, plastic, Formica® and metal

Graffiti Remover

Multi-Surface Graffiti Remover

Ready-To-Use

Item #	Size
01523-00	12 - 19 oz. Aerosol Cans



Fast acting gel formula adheres to vertical surfaces for longer contact time.

- Penetrates and removes ink, paints, crayon, wax build-up and scotch tape
- Quickly penetrates and dissolves graffiti
- For use on aluminum, brick, ceramic tile, concrete, glass, marble, porcelain and steel



INDUSTRIAL DEGREASERS

Citruspray™ RTU Foaming Degreaser

Ready-To-Use



Fortified with natural citrus solvents for faster removal of oily and greasy soils.

- Quickly penetrates fats, oils, and grease-based soils
- Clinging foam provides extended cleaning power
- For use on cement, concrete, ceramic tile, grout, porcelain, plastic, resilient tile, walls, stone, stainless steel and tools

Item #	Size
13712-00	6 - 32 oz. Bottles
13755-00	55 Gal. Drum

Speedex Ready-To-Use Cleaner • Degreaser

Ready-To-Use



Formulated with a blend of powerful cleaning ingredients and boosters.

- Fast acting industrial strength, removes the toughest oily, greasy and stubborn soils
- For use on cement, concrete, equipment, tile, floors, stone, stainless steel, walls, machines and tools in industrial settings

Item #	Size
17312-00	6 - 32 oz. Bottles
17304-00	4 - 1 Gal. Bottles
17355-00	55 Gal. Drum

Speedex Concentrate Heavy Duty Degreaser

Concentrate 1:20



Formulated with a blend of cleaning ingredients and power boosters.

- Quickly removes ink, marker, graffiti, and crayon from a variety of surfaces
- Deodorizes as it cleans
- For use on nonporous concrete, plastic, resilient tile, and steel

Item #	Size
52847-00	4 - 2 Liter FastDraw®
52855-00	55 Gal. Drum

Citrus Chisel Natural Non-Butyl Citrus Cleaner Degreaser

Concentrate 1:20 - 1:100



Superior cleaner/degreaser penetrates fats, oils, and grease-based soils.

- Performs practically any cleaning task, from factory to kitchen
- Economical dilution
- Deodorizes with pleasant citrus fragrance while it cleans
- For use on cement, concrete, equipment, floors, machinery, motors, and tools

Item #	Size
16712-00	12 - 32 oz. Bottles
16747-00	4 - 2 Liter FastDraw®
16704-00	4 - 1 Gal. Bottles
16705-00	5 Gal. Pail
16755-00	55 Gal. Drum
16727-00	275 Gal. Tote

Factory Formula™ HP High Performance Industrial Cleaner • Degreaser Concentrate

Concentrate 1:5 - 1:100



Removes the toughest rubber tire marks, grease, and oil from concrete floors and other surfaces.

- Extremely low foam formula
- Leaves no residual hazy film
- Perfect for use in autoscrubbers and in mop buckets
- For use on cement, concrete, metal, steel, and stone

Item #	Size
19304-00	4 - 1 Gal. Bottles
19305-00	5 Gal. Pail
19355-00	55 Gal. Drum
19327-00	275 Gal. Tote

Green Earth® Velocity® Non-Butyl Degreaser

Concentrate 1:5 - 1:30



Neutral-yet-powerful cleaner quickly and effectively removes stubborn soils from a variety of surfaces.

- Penetrates and removes inks, oils, greases, and fats
- As effective as alkaline and butyl degreasers
- Deodorizes as it cleans
- Safely removes black heel mark from rubber flooring

Item #	Size
19747-00	4 - 2 Liter FastDraw®
19704-00	4 - 1 Gal. Bottles
19755-00	55 Gal. Drum

Green Earth® Natural Degreaser Hard Surface Degreaser

Concentrate 1:20



Powerful, environmentally preferred degreaser removes tough soils and greases.

- Removes inks, oils, greases, and fats from a variety of surfaces
- Manufactured from renewable resources
- Non-combustible, non-corrosive, and biodegradable
- Low foaming formula
- Safe for use on all water washable surfaces

Item #	Size
21747-00	4 - 2 Liter FastDraw®
21704-00	4 - 1 Gal. Bottles
21755-00	55 Gal. Drum

INDUSTRIAL DEGREASERS

Grease Solv
Probiotic Degreaser

Concentrate 1:10 - 1:128



Rivals any traditional degreaser with added probiotic package for continuous cleaning.

- High count of non-pathogenic probiotics for better cleaning
- Probiotics target petroleum soils and other industrial organics
- Digests organic material, creating fewer issues downstream
- Suitable for industrial cleaning and degreasing, pressure washing, marine cleaning, auto bays, and more
- Available in solids that generate 350 gallons of solution each, generating up to 80% savings versus liquid

Item #	Size
260104-00	4 - 1 Gal. Bottles
260155-00	55 Gal. Drum
260127-00	275 Gal. Tote
821E3-00	4 - 575 Gram SoliChem*

*For use only with Betco® GeneSys™ scrubbers

CTW501
Car and Truck Wash

Concentrate 1:128



For use in automated car washes, brush and manual washing applications.

- Quickly breaks down and suspends dirt, dust, grime, insects and road film to be rinsed freely
- Will not dull, waterspot, or streak painted surfaces, windows or chrome
- High sudsing properties help to lubricate brushes to aid in their efficient use

Item #	Size
50104-00	4 - 1 Gal. Bottle
50105-00	5 Gal. Pail
50155-00	55 Gal. Drum
50127-00	275 Gal. Tote

Never B4
Vehicle Pressure Washer Cleaner

Concentrate 1:25 - 1:100



Quickly removes dirt, oil, grease, road film and exhaust from aluminum and painted surfaces.

- Sheeting action does not leave a film or residue
- Concentrated proprietary blend of cleaning detergents quickly attacks soil
- For use on trucks, tank trucks and buses

Item #	Size
50205-00	5 Gal. Pail
50255-00	55 Gal. Drum
50227-00	275 Gal. Tote

AC114
Multi-Purpose Acid Cleaner • Delimer

Concentrate 1:20



Powerful descaler and acid etcher, dissolves and emulsifies tough soils.

- Concentrated, fast, and effective
- For use on acid resistant metal, concrete and cement
- Pleasant odor
- Restores and rejuvenates many surfaces

Item #	Size
11404-00	4 - 1 Gal. Bottles
11455-00	55 Gal. Drum
11427-00	275 Gal. Tote

Ultra 2000™
Super Double Strength Degreaser

Concentrate 1:10 - 1:100



Powerful degreasing action instantly penetrates oily, greasy soils.

- Concentrated butyl based cleaner for heavy duty cleaning
- Instantly penetrates and emulsifies fats, oils and grease based soils
- Low foaming, ideal for automatic scrubbers, pressure washers, and dip tanks

Item #	Size
13604-00	4 - 1 Gal. Bottles
13605-00	5 Gal. Pail
13655-00	55 Gal. Drum
13627-00	275 Gal. Tote

Super Kemite®
Heavy Duty Cleaner • Degreaser

Concentrate 1:10 - 1:32



Versatile, may be used in a variety of cleaning applications with different dilutions.

- Heavy duty cleaning made easy with this advanced grease cutting formula
- Fast penetration and breakdown of greases and oils
- Low foaming formula, ideal for use in automatic scrubbers and pressure washers

Item #	Size
10304-00	4 - 1 Gal. Bottles
10305-00	5 Gal. Pail
10355-00	55 Gal. Drum
10327-00	275 Gal. Tote

Liquid Chisel® Max
Ultra Strength Non-Butyl Degreaser

Concentrate 1:10 - 1:100



Advanced and versatile formula quickly emulsifies both animal fats and petroleum greases.

- Varying dilution rates for light and heavy duty applications
- Performs well in hard water
- Non-butyl, no harmful vapors or toxic solvents
- Ideal for automatic scrubber use



Item #	Size
14504-00	4 - 1 Gal. Bottles
14555-00	55 Gal. Drum
14527-00	275 Gal. Tote

INDUSTRIAL CHEMICAL MANAGEMENT

High Flow Proportioner

Industrial Proportioner for Auto Scrubbers

Item #	Size
90423-00	1 - Dispenser



For quick filling of automatic scrubbers.

- Conveniently mounts above drum or tote
- Lever control for hands-free filling
- Small and compact unit mounts anywhere
- 8 gallon per minute flow rate

Tote / Tank Drum Proportioner

Industrial Proportioner for Drums and Totes

Item #	Size
90102-00	1 - Dispenser



The easiest way to dilute directly from drums.

- No complicated wall mount or assembly needed
- 4 gallon per minute flow rate
- Conveniently mounts directly on drum or tote

INDUSTRIAL SOLVENT DEGREASERS

Citrusolv™ Concentrate

Natural Degreaser • Deodorizer

Ready-to-Use, Concentrate 1:32

Item #	Size
20918-00	12 - 16 oz. Bottles
20904-00	4 - 1 Gal. Bottles
20905-00	5 Gal. Pail
20955-00	55 Gal. Drum



Natural citrus solvents remove the toughest soils.

- Perfect for dip cleaning and removing heavy build-up of industrial soil
- Deodorizes as it cleans with citrus fragrance
- Meets VOC requirements in most states

Citrusolv™ 40

Multi-Purpose • Heavy-Duty Solvent • Degreaser

Concentrate 1:5 - 1:43

Item #	Size
21104-00	4 - 1 Gal. Bottles
21155-00	55 Gal. Drum



High quality natural citrus terpenes remove heavy grease deposits and tough soils.

- Nonacidic, noncaustic and non corrosive
- Cleans greasy floors, walls and equipment
- Removes adhesives, decals and chewing gum
- Controls odors in problem areas

Citrusolv™ HF

High Flash Solvent • Degreaser

Ready-To-Use

Item #	Size
21405-00	5 Gal. Pail
21455-00	55 Gal. Drum



Evaporates quickly with no residue.

- 145° F flash point reduces flammability concerns.
- Rapidly removes grease, oil, and other contaminants
- Deodorizes as it cleans
- Non-acidic, non-caustic and non-corrosive.

Citrusolv™ WR

Water Rinsable Solvent • Degreaser

Ready-To-Use

Item #	Size
21255-00	55 Gal. Drum



Natural citrus solvents quickly penetrate grease, oils, adhesives, undercoating, and rubber tire marks.

- Perfect for dip cleaning and removing heavy build-up of industrial soil
- Deodorizes as it cleans with citrus fragrance
- Meets VOC requirements in most states



RESTROOM - ACID CLEANERS

Kling™

Thickened Acid Toilet Bowl and Urinal Cleaner

Ready-To-Use

Item #	Size
07512-00	12 - 32 oz. Bottles
07555-00	55 Gal. Drum



Thickened formula for better cleaning.

- 9% hydrochloric acid for tough soils
- Pleasant mint fragrance
- For use on toilets, urinals, ceramic tile floors, porcelain sinks and urinals

Bol Maid®

Porcelain Toilet Bowl Cleaner

Ready-To-Use

Item #	Size
07212-00	12 - 32 oz. Bottles



Quickly removes rust, scale, stains, hard water mineral deposits and urine salts.

- 9% hydrochloric acid for tough soils
- Pleasant mint fragrance
- Inhibited to protect plumbing and fixtures
- For use on toilets and urinals

Pull®

Heavy Duty Toilet Bowl • Urinal Cleaner

Ready-To-Use

Item #	Size
07112-00	12 - 32 oz. Bottles
07155-00	55 Gal. Drum



Formulated for restorative cleaning to work quickly.

- 23% hydrochloric acid to remove rust, scale and mineral deposits
- For use on inside of toilet bowls and urinals only
- Ideal for hard water applications

Stix™

Toilet Bowl, Porcelain and Shower Tile Cleaner

Ready-To-Use

Item #	Size
07612-00	12 - 32 oz. Bottles



Quickly removes a variety of soils from restroom surfaces.

- Removes rust, mineral deposits and lime as well as soap scum, body oils and grease
- Mild acid won't damage common restroom surfaces
- Pleasant cherry almond fragrance
- For use on toilets, urinals, porcelain sinks and shower stalls

Sure Bet™ II

One-Step Acid Cleaner, Disinfectant, Virucide, Mildewstat, and Deodorizer

Concentrate 1:32

Item #	Size
31412-00	12 - 32 oz. Bottles
31447-00	4 - 2 Liter FastDraw®
31404-00	4 - 1 Gal. Bottles
31405-00	5 Gal. Pail
31455-00	55 Gal. Drum
31447-07	4 - 2 Liter FastDraw® (CA)
31404-07	4 - 1 Gal. Bottles (CA)
31455-07	55 Gal. Drum (CA)



Foaming action extends contact time for better cleaning and more effective disinfecting.

- Quickly removes soap scum, hard water deposits and other shower residues
- Defends against harmful germs while deodorizing
- For use on showers, bath tubs, porcelain fixtures and ceramic tile floors

RESTROOM - ACID FREE CLEANERS

Green Earth® RTU Restroom Cleaner

Non-Corrosive • Heavy Duty Restroom Cleaner

Ready-To-Use

Item #	Size
30912-00	12- 32 oz. Bottles



Removes difficult, hard water stains and soap scum in all areas of the restroom.

- Contains organic acids, powerful cleaning agents that inhibit scaling and soil buildup
- Non-corrosive acid removes the toughest soap scum deposits
- Pleasant fresh mint fragrance
- For use on sinks, counters fixtures, tubs, floors, walls, glazed tile, and porcelain



RESTROOM - ACID FREE CLEANERS

Green Earth® Restroom Cleaner

Concentrated • Non Corrosive • Heavy Duty Restroom Cleaner

Concentrate 1:20 - 1:64



Safely removes soap scum and hard water from restroom surfaces.

- Foaming action allows for longer contact time and maximum penetration of tough soils
- Pleasant, powerful fragrance
- For use in showers, bathtubs, and other restroom surfaces

Item #	Size
54847-00	4 - 2 Liter FastDraw®
54804-00	4 - 1 Gal. Bottles
54855-00	55 Gal. Drum

AF79

Acid Free Restroom Cleaner and Disinfectant

Ready-To-Use



Germicidal detergent disinfects, cleans, and deodorizes in one easy step.

- Clean and disinfects hard nonporous bathroom surfaces
- Pleasant citrus bouquet fragrance
- Quickly removes soap scum
- Non-scratch cleaning of showers, tubs, shower doors, fixtures, and toilet bowls

Item #	Size
07912-00	12 - 32 oz. Bottles
07904-00	4 - 1 Gal. Bottles
07955-00	55 Gal. Drum

Rest Stop™

Value Priced Restroom Disinfectant

Ready-To-Use



Latest odor control technology delivers powerful fragrance cleaning ingredients and power boosters.

- Delivers non-acid disinfectant and cleaning performance, with a pleasant citrus bouquet fragrance
- Acid free, will not damage surfaces
- For use on toilets, urinals, sinks, counters, floors, showers, glazed ceramic tiles, and walls

Item #	Size
07012-00	12 - 32 oz. Bottles
07004-00	4 - 1 Gal. Bottles
07005-00	5 Gal. Pail
07055-00	55 Gal. Drum

AF79 Concentrate

Concentrated Acid-Free Bathroom Disinfectant

Concentrate 1:64 - 1:128



Offers excellent cleaning performance with outstanding value and economy.

- Effective against SARS-CoV-2 (COVID-19), VRE, MRSA, Staphylococcus aureus, Salmonella enterica, Pseudomonas aeruginosa, and HIV-1 (AIDS)
- Pleasant ocean breeze fragrance
- For use on counters, floors, ceramic tile, concrete, sinks, tables, toilets, trash cans, urinals and walls

Item #	Size
33104-00	4 - 1 Gal. Bottles
33147-00	4 - 2 Liter FastDraw®
331B2-00	2 - 2 Liter FastDraw®
33147-07	4 - 2 Liter FastDraw® (CA)
33104-07	4 - 1 Gal. Bottles (CA)

Forest 5

Foaming • Cleaner • Deodorant

Ready-To-Use



Powerful clinging foam action allows for maximum contact time.

- Pleasant mint fragrance
- Versatile all-purpose cleaner
- Excellent for soap scum removal in shower areas
- For use on bathtubs, counters, floors, walls, hampers, showers, sinks and trash cans

Item #	Size
30712-00	12 - 32 oz. Bottles
30755-00	55 Gal. Drum

Best Bet™

Liquid Creme Cleanser

Ready-To-Use



Contains jeweler's grade abrasive to clean thoroughly without scratching surface.

- Thick clinging formula is ideal for vertical surfaces
- Penetrates, scours, brightens, and polishes without heavy agitation
- Fresh mint fragrance
- For use on bathtubs, chrome, metal, porcelain, sinks, stainless steel, tile, toilets, urinals, and walls

Item #	Size
07712-00	12 - 32 oz. Bottles
07755-00	55 Gal. Drum

BTB

Instant Mildew Stain Remover • Bathroom Cleaner

Ready-To-Use



Instantly whitens counters, fiberglass, grout, showers, sinks, tiles, tubs and vinyl.

- Instantly removes tough mildew stains
- Increases the level of cleanliness in the shower rooms, locker rooms, and other restroom area
- Pleasant fragrance

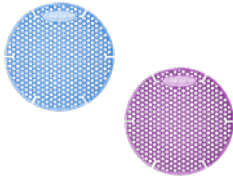
Item #	Size
32112-00	12 - 32 oz. Bottles

RESTROOM - OTHER

Max Scent Urinal Screens

Long Lasting, Enzyme Powered, and Anti-Splash

Ready-To-Use



Patented technology delivers 3X more fragrance than conventional urinal screens.

- Two-sided design eliminates 97% of splash back either side you install it
- Contains billions of probiotic bacteria to digest waste and completely eliminate odors
- Long-lasting fragrance works for up to 30 days

Item #	Size
904D7-00	60 - Spectaculoso™ Max Scent Urinal Screens
906D7-00	60 - Ocean Breeze Max Scent Urinal Screens

Urinal Puck Blue DSL

Probiotic Urinal Puck

Ready-To-Use



Contains probiotics capable of degrading uric acid and degrading odors naturally.

- Preventative maintenance tool - controls scale build-up
- Works in all types of urinals or troughs
- Cleans and freshens
- Prevents blockages in traps and pipes

Item #	Size
Z603RP1-00	50 - 50 Gram Pucks

Barrier Fluid

Oil-Based Malodor Blocking Liquid

Ready-To-Use



Malodor prevention fluid for use in urinals or floor drains.

- Reduces odor and enhances the restroom experience
- Pleasant, long-lasting fragrance
- For use in water free urinals and floor drains

Item #	Size
29170-00	6 - 32 oz. Bottles

CONCENTRATED DISINFECTANTS

AF315

Disinfectant • Deodorant • Cleaner

Concentrate 1:26



Provides long lasting freshness against tough odors.

- Disinfectant kills pseudomonas, salmonella, and staph
- Cleans, disinfects, and deodorizes in one step
- Kills HIV-1 (AIDS) on precleaned environmental surfaces/objects
- Neutral pH will not attack floor finish

Item #	Size
31512-00	12 - 32 oz. Bottles
31547-00	4 - 2 Liter FastDraw®
31504-00	4 - 1 Gal. Bottles
31505-00	5 Gal. Pail
31555-00	55 Gal. Drum

pH7Q Dual

Neutral pH Disinfectant • Detergent • Deodorant

Concentrate 1:256



Neutral pH cleaner, disinfectant and deodorizer.

- Disinfects, cleans, and deodorizes in one labor-saving step
- Kills SARS-CoV-2 (COVID-19), HIV-1 (AIDS virus), Influenza A, Hepatitis B, VRE and MRSA on pre-cleaned environmental surfaces
- For use on floors, chairs, bathroom fixtures, desks, counters and stainless steel

Item #	Size
35547-00	4 - 2 Liter FastDraw®
35504-00	4 - 1 Gal. Bottles
35555-00	55 Gal. Drum

Daily Disinfectant Dual

Neutral pH Disinfectant • Detergent • Deodorant

Concentrate 1:256



Economical ultra concentrate provides low end-use cost.

- Disinfects, cleans, and deodorizes in one labor saving step
- Kills SARS-CoV-2 (COVID-19), HIV-1 (AIDS virus), Influenza A, Listeria, VRE and MRSA on pre-cleaned environmental surfaces
- Economical ultra concentrate provides low end-use cost
- Perfect for damp mopping highly polished floors
- For use on floors, walls, toilets, sinks, glazed porcelain and plastic

Item #	Size
35504-07	4 - 1 Gal. Bottles (CA)
35547-07	4 - 2 Liter FastDraw® (CA)

pH7Q

Neutral pH Disinfectant • Detergent • Deodorant

Concentrate 1:64



Neutral pH cleaner disinfectant and deodorizer.

- Disinfects, cleans, and deodorizes in one labor saving step
- Kills SARS-CoV-2 (COVID-19), HIV-1 (AIDS virus), Influenza A, Hepatitis B, VRE and MRSA on pre-cleaned environmental surfaces
- For use on floors, walls, toilets, sinks, glazed porcelain and plastic

Item #	Size
31604-00	4 - 1 Gal. Bottles
31647-00	4 - 2 Liter FastDraw®
31605-00	5 Gal. Pail
31655-00	55 Gal. Drum

Quat-Stat™ 5

One-Step Disinfectant • Cleaner

Concentrate 1:256



A heavy duty disinfectant that cleans disinfects and deodorize.

- Can be used through an auto scrubber without dulling gloss
- Effective against a broad spectrum of bacteria, is virucidal including SARS-CoV-2 (COVID-19), HIV-1 (AIDS virus), Hepatitis B and C and is fungicidal
- Approved for use in electrostatic sprayers

Item #	Size
34148-00	6 - 32 oz. Dosing Bottle
34147-00	4 - 2 Liter FastDraw®
34104-00	4 - 1 Gal. Bottles
34155-00	55 Gal. Drum

Triforce

One-Step Disinfectant • Bactericidal • Fungicidal • Virucidal*

Concentrate 1:256



3 minute broad spectrum hard surface disinfectant and soft surface sanitizer.

- Efficacy against SARS-CoV-2 (COVID-19) Staphylococcus, Klebsiella Pneumoniae, HIV, Hepatitis B & C, Influenza
- Approved for use in electrostatic sprayers
- Added benefit of soft surface sanitization
- Formulated to reduce cross-contamination on treated surfaces

Item #	Size
33347-00	4 - 2 Liter FastDraw®

VersiFect™

Disinfectant, Virucide, Cleaner and Deodorizer

Concentrate 1:64



Effective against SARS-Related Coronavirus (SARS-CoV-2) in 1 minute.

- Economical concentrate that can be used with a mop and bucket, trigger sprayers or sponge
- Kills Pseudomonas aeruginosa, Staphylococcus aureus (MRSA), CA-MRSA, HBV
- Hospital disinfectant and kills HIV-1 (AIDS virus) and Influenza A
- This product saves, time, labor and cost.

Item #	Size
382047-00	4 - 2 Liter FastDraw®
382004-00	4 - 1 Gal. Bottles
382055-00	55 Gal. Drum

CONCENTRATED DISINFECTANTS

Pine Quat
Pine Cleaner Disinfectant • Deodorant

Concentrate 1:32



One-step cleaner serves as fungicide in the presence of organic soils.

- Neutral pH, no harsh alkali, will not attack floor finish
- Simple to use with pleasant pine fragrance
- Deodorizes surfaces restrooms, locker rooms and exercise facilities
- For use on floors, countertops, desks, walls, shower stalls, tubs, toilets, sinks, laminate, stainless steel, glazed porcelain and plastic

Item #	Size
30404-00	4 - 1 Gal. Bottles
30405-00	5 Gal. Pail
30455-00	55 Gal. Drum

READY-TO-USE DISINFECTANTS

Fight-Bac™ RTU
Broad Spectrum Disinfectant • Cleaner

Ready-To-Use



Use on hard non-porous surfaces in hospitals, nursing homes, schools, office buildings and lodging establishments.

- Kills 99.9% of bacteria when used according to disinfection directions
- Cuts tough grease and grime and will not scratch or bleach surfaces
- Kills SARS-CoV-2 virus on hard non-porous surfaces

Item #	Size
31112-00	12 - 32 oz. Bottles
31104-00	4 - 1 Gal. Bottles
31155-00	55 Gal. Drum
31112-07	12 - 32 oz. Bottles (CA)
31104-07	4 - 1 Gal. Bottles (CA)
31155-07	55 Gal. Drum (CA)

GE Fight-Bac™ RTU
Disinfectant • Cleaner • Virucide • Fungicide

Ready-To-Use



One step, no rinse cleaner and disinfectant formulated with a botanical citric acid.

- Demonstrates efficacy against pathogens like SARS-CoV-2 (COVID-19)
- Can be used as a food contact sanitizer
- Suitable for use on hard and/or soft surfaces
- For use on desks, countertops, kitchen surfaces, restrooms, stainless steel

Item #	Size
39012-00	12 - 32 oz. Bottles
39004-00	4 - 1 Gal. Bottles
39005-00	5 Gal. Pail
39055-00	55 Gal. Drum
39027-00	275 Gal. Tote

Glybet™ III
Disinfectant • Deodorant Tuberculocidal • Virucide • Fungicide

Ready-To-Use



Disinfectant for use in restrooms and on hard surfaces.

- Serves as a fungicide against pathogenic fungi, mold, and mildew
- Kills odor-causing bacteria at the source
- Kills Influenza A and B virus, VRE, MRSA, salmonella, and pseudomonas
- Tuberculocidal hospital-grade disinfectant

Item #	Size
108623-00	12 - 15.5 oz. Aerosol Cans

Cide-Bet II
Hospital Disinfectant Foaming Germicidal Cleaner • Citrus Bouquet

Ready-To-Use



Hospital-grade disinfectant cleans without scouring or scratching.

- Dispenses a clinging foam for vertical surfaces
- Virucidal against AIDS virus and Herpes Simplex 1 & 2
- Deodorizes with pleasant scent, eliminating all malodors at the source

Item #	Size
08723-00	12 - 19 oz. Aerosol Cans



Bloodborne Pathogen Standard Compliance

The United States Department of Labor, Occupational Health and Safety Administration (OSHA) recognizes EPA registered disinfectants which are tuberculocidal or are EPA registered as efficacious against both the Hepatitis B virus and the HIV-1 (AIDS Virus) as meeting the requirements of the OSHA Bloodborne Pathogen Standard for decontamination of work surfaces.

AIR CARE

Best Scent™ Ocean Breeze
Air Freshener

Ready-To-Use / Concentrate 1:10 - 1:256



Immediately defeats lingering odors, freshening the treated area with a pleasant aroma.

- Use on airborne odors, floors, carpets, trash containers
- Fresh ocean breeze scent
- Versatile, use in any deodorizing application
- Available in ready-to use or concentrated

Item #	Size
23147-00	4 - 2 Liter FastDraw®
23104-00	4 - 1 Gal. Bottles
23155-00	55 Gal. Drum
23512-00	12 - 32 oz. Bottles (RTU)
02423-00	12 - 16 oz. Aerosol Cans (RTU)

Best Scent™ Lemon Zest
Air Freshener

Ready-To-Use / Concentrate 1:10 - 1:256



Immediately defeats lingering odors, freshening the treated area with a pleasant aroma.

- Use on airborne odors, floors, carpets, trash containers
- Fresh lemon zest scent
- Versatile, use in any deodorizing application
- Available in ready-to-use or concentrate

Item #	Size
22604-00	4 - 1 Gal. Bottles
22655-00	55 Gal. Drum
23312-00	12 - 32 oz. Bottles (RTU)

Best Scent™ Smoke & Odor
Odor Neutralizer

Ready-To-Use



Contains odor counteractant technology to eliminate smoke and burnt malodors, not just cover them up.

- For use on airborne odors, floors, carpets and trash containers
- Versatile, use in any deodorizing application.
- Spring renewal scent

Item #	Size
23404-00	4 - 1 Gal. Bottles
23455-00	55 Gal. Drum
23412-00	12 - 32 oz. Bottles
06223-00	12 - 16 oz. Aerosol Cans

SenTec® Mountain Meadow
Odor Eliminator Technology

Ready-To-Use / Concentrate 1:10 - 1:256



Scientifically formulated to completely eliminate odors instead of covering them up.

- Unique malodor counteractant technology eliminates odors
- SenTec® traps and removes odors from the air

Item #	Size
4125B2-00	2 - 2 Liter FastDraw®
412504-00	4 - 1 Gal. Bottles
402570-00	6 - 32 oz. Bottles (RTU)

SenTec® Pure Linen
Odor Eliminator Technology

Ready-To-Use / Concentrate 1:10 - 1:256



Scientifically formulated to completely eliminate odors instead of covering them up.

- Unique malodor counteractant technology eliminates odors
- SenTec® traps and removes odors from the air

Item #	Size
4130B2-00	2 - 2 Liter FastDraw®
413004-00	4 - 1 Gal. Bottles
403070-00	6 - 32 oz. Bottles (RTU)





SYMPPLICITY™

CLEAN - Premium products and programs are uniquely designed to deliver one-pass clean performance

SAFE - Many products feature "no-contact" SureConnect dispensing for employee safety, environmental, performance and cost-saving benefits

SIMPLE - Experts provide service, support materials, and continuous training to keep operations running smoothly, and a streamlined offering reduces inventory costs and simplifies the reordering process



Food Service & Warewash Solutions

One-Pass Clean Performance

No matter the application within your food service environment, Betco has a solution to ensure your operation achieves the highest standards of cleanliness and customer satisfaction. With products for warewash—including high temp, low temp, and manual, spanning both liquid and cost-saving solid formulations—dispensing, and cleaning tasks, Betco will deliver one-pass clean performance each and every time.



DISH MACHINE DETERGENTS

Symplicity™ Blaze Machine Detergent

Machine Detergent Concentrate

Concentrate

Item #	Size
23973-00	4 - 5 Pound Jars



Extra strength solid machine detergent for one-pass clean dishes, crystal clear glassware, and spotless silverware.

- 100% active ingredient formula is ultra concentrated for outstanding use cost
- Complete product evacuation to eliminate waste
- Compact size saves storage space and molded handle makes handling easy
- Prevents misuse and contact with concentrated product for enhanced employee safety
- Versatile, works well in hard and soft water and high and low temp dish machines

Symplicity™ Blaze NP Machine Detergent

Non-Phosphate Machine Detergent

Concentrate

Item #	Size
93273-00	4 - 5 Pound Jars



Phosphate-free solid machine detergent removes heavy food soils in wide range of conditions.

- Low environmental impact, low VOCs and no APEs, NPEs, or EDTAs
- 100% active ingredient formula is ultra concentrated for outstanding use cost
- Complete product evacuation to eliminate waste
- Compact size saves storage space and molded handle makes handling easy
- Prevents misuse and contact with concentrated product for enhanced employee safety
- Versatile, works well in hard and soft water and high and low temp dish machines

Symplicity™ Green Earth® Machine Detergent

Machine Detergent Concentrate

Concentrate

Item #	Size
24073-00	4 - 5 Pound Jars



Metal-safe, phosphate-free solid machine detergent.

- Low environmental impact, low VOCs and no APEs, NPEs, or EDTAs
- 100% active ingredient formula is ultra concentrated for outstanding use cost
- Complete product evacuation to eliminate waste
- Compact size saves storage space and molded handle makes handling easy
- Prevents misuse and contact with concentrated product for enhanced employee safety
- Versatile, works well in hard and soft water and high and low temp dish machines

Symplicity™ All Temp Machine Detergent

Concentrated All Temperature Machine Detergent

Concentrate

Item #	Size
24474-00	4 - 1 Gal. Bottles
24478-00	5 Gal. Pail
24455-00	55 Gal. Drum



Non-chlorinated, all-temp machine detergent for excellent soil suspension in removal in all water conditions.

- Ultra concentrated for outstanding use cost
- SureConnect system enhances safety and ensures no contact, no spills
- Free rinsing, improved performance
- Versatile, works well in hard and soft water and high and low temp dish machines

Symplicity™ Chlorinated Machine Detergent

Stain Fighting Detergent

Concentrate

Item #	Size
24178-00	5 Gal. Pail
24155-00	55 Gal. Drum



Premium chlorinated high temp machine detergent for superior performance and optimal stain removal in most water conditions.

- Ultra concentrated for outstanding use cost
- Chlorine additive eliminates coffee and tea stains
- SureConnect enhances safety while ensuring no contact, no spills
- Free rinsing, improves rinsing performance
- Versatile, works well in hard and soft water and high and low temp dish machines

Symplicity™ Metal Safe Detergent

Concentrated All Temp Machine Detergent

Concentrate

Item #	Size
244974-00	4 - 1 Gal. Bottles
244978-00	5 Gal. Pail
244977-00	15 Gal. Drum
244955-00	55 Gal. Drum



Formulated to clean the toughest soils and prevent corrosion on aluminum, copper, pewter, brass and other soft metals.

- Versatile, works well in hard and soft water and high and low temp dish machines
- SureConnect, no contact, no spills, enhances safety and more
- Ultra concentrated for outstanding use cost

DISH MACHINE RINSE AIDS

Symplicity™ Krystal Solid Rinse Aid
Solid Machine Rinse Aid

Concentrate

Item #	Size
268A3-00	1 - 5 Pound Jar



Boasts excellent sheeting and quick drying.

- Ultra low foaming formula controls wash tank foam
- 100% active ingredient formula is ultra concentrated for outstanding use cost
- Complete product evacuation to eliminate waste
- Compact size saves storage space and molded handle makes handling easy
- Prevents misuse and contact with concentrated product for enhanced employee safety
- Versatile, works well in hard and soft water and high and low temp dish machines

Symplicity™ All Temp Rinse Aid
Dish Machine All Temperature Rinse Aid

Concentrate

Item #	Size
24574-00	4 - 1 Gal. Bottles
24578-00	5 Gal. Pail



Concentrated rinse additive delivers rapid sheeting for spot free drying in both low and high temperature dish machines.

- Controls foaming, improved performance
- Versatile, works well in hard and soft water and high and low temp dish machines
- SureConnect, no contact, no spills, enhances safety and more
- Accelerates drying, labor saving, increased productivity
- Ultra concentrated for outstanding use cost

Symplicity™ Machine Rinse Aid
Dish Machine Rinse Aid

Concentrate

Item #	Size
26174-00	4 - 1 Gal. Bottles
26178-00	5 Gal. Pail



Economy all-temp, low-foaming dish machine rinse aid.

- Versatile, works well in hard and soft water and high and low temp dish machines
- Provides quick drying and excellent sheeting action in soft water
- SureConnect system enhances safety and ensures no contact, no spills

Symplicity™ TDS Rinse Aid
Concentrated Liquid Rinse Aid

Concentrate

Item #	Size
24378-00	5 Gal. Pail



Premium rinse aid formulated for hard water and high total dissolved solid water conditions.

- Ultra concentrated for outstanding use cost
- Prevents spotting, eliminates rewash
- Formulated for accelerated drying, saves labor
- Low foam formula increases machine efficiency
- Low environmental impact with low VOCs and no phosphorus, APes, NPEs, or EDTAs
- SureConnect system enhances safety and ensures no contact, no spills
- Versatile, works well in hard and soft water and high and low temp dish machines

DISH MACHINE SANITIZER

Symplicity™ Low Temp Machine Sanitizer 215
EPA Registered Machine Sanitizer

Concentrate

Item #	Size
24674-00	4 - 1 Gal. Bottles
24678-00	5 Gal. Pail



Chlorinated sanitizer for use with low temp, low energy machines.

- Active chlorine eliminates coffee and tea stains, attacks protein soils
- Ultra concentrated for outstanding use cost
- SureConnect system enhances safety and ensures no contact, no spills
- For use on stainless steel, glass, china, porcelain, and plastic

Symplicity™ Low Temp Machine Chlorine
Machine Sanitizer

Concentrate

Item #	Size
24678-07	5 Gal. Pail (CA)



Chlorinated sanitizer for use with low temp, low energy machines.

- Active chlorine eliminates coffee and tea stains, attacks protein soils
- Ultra concentrated for outstanding use cost
- SureConnect system enhances safety and ensures no contact, no spills
- For use on stainless steel, glass, china, porcelain, and plastic



DELIMER

Symplicity™ L-S-R Delimer Dish Machine Descaler

Concentrate 2 to 4 oz. per gallon



Premium acid-based lime scale remover/delimer with sassafras fragrance.

- Versatile, descales a variety of equipment
- Low foaming formula improves performance
- Ultra concentrated for outstanding use cost
- Fast-acting, saves labor

Item #	Size
24804-00	4 - 1 Gal. Bottles
24855-00	55 Gal. Drum

MANUAL - THREE COMPARTMENT & BAR SINK DETERGENTS

Symplicity™ Green Earth® Pot & Pan Detergent Premium 100% Active Solid Pot & Pan Detergent

Concentrate



Non-phosphate manual detergent rapidly penetrates and suspends difficult food soils.

- Low environmental impact, low VOCs, no phosphorus, APEs, or NPEs
- 100% active ingredient formula is ultra concentrated for outstanding use cost
- Complete product evacuation to eliminate waste
- Compact size saves storage space
- Molded handle for ease of handling
- Prevents misuse and contact with concentrated product for enhanced employee safety
- Rich, long-lasting suds

Item #	Size
25671-00	2 - 5 Pound Jars

Symplicity™ In-Sync Ultra Concentrated Manual Pot & Pan Detergent

Concentrate - 1 - 2 oz. per 10 gallons



Ultra-concentrated hand dishwashing detergent.

- Formulated to take on the leading blue brands
- Ideal for cleaning heavily encrusted pots and pans and has the power to cut through the toughest grease
- Specifically designed for food retail, institutional and restaurant use where fast grease emulsification and lasting suds are a must
- Ultra concentrated for outstanding use cost

Item #	Size
185147-00	4 - 2 Liter FastDraw®
185104-00	4 - 1 Gal. Bottles
185105-00	5 Gal. Pail
185189-00	8 - 38 oz. Bottles
185155-00	55 Gal. Drum

Symplicity™ Citrusuds™ Lemon Scented Pot & Pan Detergent

Concentrate - .4 oz. per gallon



Lemon scented manual dishwashing detergent.

- Ideal for cleaning pots, pans, and dishes
- Works quickly and leaves surfaces spot and film-free
- Effective on grease and fat but mild on the hands
- Ultra concentrated for outstanding use cost

Item #	Size
210947-00	4 - 2 Liter FastDraw®
210904-00	4 - 1 Gal. Bottles
210905-00	5 Gal. Pail

Symplicity™ Tilly® Hand Dishwashing Detergent

Concentrate - 1 oz. per gallon



Economy lotionized, pH neutral pink hand dishwashing detergent.

- Gentle on the hands in industrial, institutional, and restaurant applications
- Quickly cuts through baked-on food and grease deposits
- Provides long lasting, stable suds
- Pleasant fragrance

Item #	Size
11004-00	4 - 1 Gal. Bottles
11005-00	5 Gal. Pail

Symplicity™ Fresh Suds Hand Dishwashing Detergent

Concentrate - 1 oz. per 3 gallons



Economical hand dishwashing detergent.

- Specially designed for industrial, institutional and restaurant use
- Rinses freely - This product provides stable suds yet never streaks
- Ultra concentrated for outstanding use cost

Item #	Size
210204-00	4 - 1 Gal. Bottles

Symplicity™ Betco® Bar Glass Detergent Low Foam Bar Glass Detergent

Concentrate 1 oz per 10 gallons



Low foam bar glass detergent removes stubborn lipstick and other soils.

- Will not affect beer head
- Effective cleaning
- Ultra concentrated for outstanding use cost
- Low foaming formula improves performance
- Improved rinsing performance

Item #	Size
25704-00	4 - 1 Gal. Bottles

MANUAL - THREE COMPARTMENT SINK & ALL-PURPOSE SANITIZER

Symlicity™ Sanibet™ Multi-Range
Sanitizer • Disinfectant • Cleaner

Concentrate 1:512



General hard surface sanitizer for 3-sink operations, any food production area, equipment, counters, tables, glassware, chopping blocks, utensils, and any other hard surface.

- Kills Listeria, E-Coli, Salmonella
- No rinse required when used as directed as a sanitizer
- Ultra concentrated for outstanding use cost
- Effective in hard water

Item #	Size
23704-00	4 - 1 Gal. Bottles
23725-00	2.5 Gal. Bag in Box
23705-00	5 Gal. Pail
23747-00	4 - 2 Liter FastDraw®
23755-00	55 Gal. Drum
23704-07	4 - 1 Gal. Bottles (CA)
23747-07	4 - 2 Liter FastDraw® (CA)

PRESOAKS

Symlicity™ Pinnacle Presoak
Concentrated Flatware Presoak with Enzymes

Concentrate



Solid, dual active enzyme pre-soak penetrates hardened food soils and de-tarnishes silverware.

- Enzymes quickly remove difficult stains
- 100% active ingredient formula is ultra concentrated for outstanding use cost
- Spotless one-pass washing reduces rewash
- Complete product evacuation to eliminate waste
- Compact size saves storage space and molded handle makes handling easy
- Prevents misuse and contact with concentrated product for enhanced employee safety

Item #	Size
24771-00	2 - 5 Pound Jars

Flatware Presoak
Concentrated Liquid Presoak & Brightener

Concentrate 1 to 2 oz. per gallon



Effective double-duty presoak softens food soils on flatware prior to machine processing.

- Brightens and shines stainless ware
- Spotless one-pass washing reduces rewash
- Ultra concentrated for outstanding use cost
- Fast-acting, saves labor

Item #	Size
259904-00	4 - 1 Gal. Bottles

Symlicity™ Oxy Destainer Powder
Oxygen Stain Remover

Concentrate 1 to 2 oz. per gallon



An oxygen releasing compound formulated to remove stains from china and plasticware.

- Reduces rewash, spotless one pass washing
- May be used as a presoaking solution prior to machine or manual dishwashing
- Effective on tea, coffee, cola and food soil stains
- Also an effective stain remover and deodorizer for laundry and hard surface cleaning

Item #	Size
2450G9-00	2 - 8 Pound Jars

CLEANERS / DEGREASERS / SURFACE SANITIZER

Sanibet™ RTU
Cleaner • Sanitizer • Deodorizer

Ready-To-Use



General purpose hard surface sanitizer.

- Any use in restaurants, bars, kitchens, and meat and poultry plants
- No need to rinse, air dry
- Convenient ready-to-use spray bottle

Item #	Size
34212-00	12 - 32 oz. Bottles

Oven Jell
Oven • Grill and Range Hood Cleaner

Ready-To-Use



Gel formula clings to surfaces, quickly penetrating and removing baked and burnt-on deposits.

- Breaks chemical bond between soil and oven, releasing deposits
- Non-fuming, non-flammable
- For use on deep fat fryers, electric burners, frying pans, ovens, range hoods, and stove burners

Item #	Size
13912-00	12 - 32 oz. Bottles
13904-00	4 - 1 Gal. Bottles
13955-00	55 Gal. Drum

Oven and Grill Cleaner
Aerosol Oven and Grill Cleaner

Ready-To-Use



Versatile, can be used in hot or cold ovens.

- Gel formulation clings and cleans
- Self-scouring, penetrates grease/carbon instantly
- Lemon scent, pleasant and convenient to use
- For use on griddles, ovens and grills, rotisseries and stove burners

Item #	Size
05523-00	12 - 19 oz. Aerosol Cans

CLEANERS / DEGREASERS / SURFACE SANITIZER

Oven / Fryer / Grill Cleaner

Ready-To-Use Cleaner

Ready-To-Use



Breaks chemical bond of baked-on deposits, releasing them from oven surface.

- Quickly penetrates and releases soils
- Non-fuming with fresh fragrance
- Versatile, for use on ovens, grills, and range hoods

Item #	Size
100104-00	4 - 1 Gal. Bottles

Spray Foam

Heavy Duty Foaming Degreaser

Concentrate 1:20



Clinging formula allows easy cleaning of vertical surfaces.

- Quickly emulsifies and removes animal fats, grease and vegetable oils
- Leaves hard surfaces such as floors, walls, and equipment odorless and film-free
- For use in food retail, food processing plants and other food service environments

Item #	Size
12604-00	4 - 1 Gal. Bottles
12605-00	5 Gal. Pail
12655-00	55 Gal. Drum
12627-00	275 Gal. Tote

Spray Foam Ultra

Heavy Duty Foaming Degreaser

Concentrate 1:256



Non-caustic, non-corrosive, clinging foam allows easy cleaning of vertical surfaces.

- Concentrated yet effective formula for maximum efficiency
- Free rinsing, no residue and very low foam
- Quickly emulsifies/removes animal fat, grease, vegetable oil, blood and fatty soils
- For use in food retail, food processing plants and other food service environments

Item #	Size
18647-00	4 - 2 Liter FastDraw®
18604-00	4 - 1 Gal. Bottles

HD High Foam Chlorinated Degreaser

High Foaming Chlorinated Degreaser

Concentrate 1:20



Thick, rich, clinging foam, ideal for CIP (clean in place) applications.

- High caustic formula removes the toughest fats, oils, grease and blood stains
- Sodium hypochlorite whitens discolored areas
- Non-butyl food retail, no perfume or dyes
- For use on food retail, food processing floors, walls and equipment

Item #	Size
54004-00	4 - 1 Gal. Bottles
54005-00	5 Gal. Pail
54055-00	55 Gal. Drum
54027-00	275 Gal. Tote

HD Low Foam CIP Chlorinated Degreaser

Low Foaming Chlorinated Degreaser for CIP (Clean in Place) Cleaning

Concentrate 1:20



Very low foam, ideal for CIP applications.

- High caustic formula removes the toughest fats, oils, grease and blood stains
- Sodium hypochlorite whitens discolored areas.
- Non-butyl, no perfume or dyes
- For use on food processing floors, walls and equipment

Item #	Size
53004-00	4 - 1 Gal. Bottles
53055-00	55 Gal. Drum

Citrus Kitchen Degreaser

Citrus Cleaner • Degreaser

Concentrate 1:6 - 1:32



Superior cleaning performance with natural citrus solvents.

- Citrus solvents and surfactants emulsify fats, oils, and greases from kitchen floors and surfaces
- Great deodorizer
- Highly economical concentration for versatility and low end use cost
- Performs well in hot, cold, hard, or soft water

Item #	Size
113104-00	4 - 1 Gal. Bottles

Kitchen Degreaser

Cleaner and Degreaser

Concentrate 1:6 - 1:32



A heavy duty degreaser specifically formulated to instantly dissolve greasy, oily soils found in commercial kitchens.

- Works well in hot, cold, hard or soft waters
- Ultra-concentrated product offers true economy and unbeatable performance
- Versatile, use for everything from light to heavy duty cleaning

Item #	Size
101204-00	4 - 1 Gal. Bottles
101205-00	5 Gal. Pail
101255-00	55 Gal. Drum

Also Used as Food Service Degreaser: Citrus Chisel - See p. 21.

CLEANERS / DEGREASERS / SURFACE SANITIZER

MAD
Mild Acid Detergent

Concentrate 1:15 - 1:64



For use on chrome, floors, showers, sinks, stainless steel, tubs, tile, grout and walls.

- Concentrated for effective end-use dilutions
- Removes rust, lime and scale from hard non-porous surfaces
- Removes salt residues and neutralizes floors after intense strip jobs

Item #	Size
13504-00	4 - 1 Gal. Bottles
13555-00	55 Gal. Drum

No-Rinse Floor Cleaner
Probiotic No-Rinse Multi-Surface Floor Cleaner

Concentrate 1:64



Proprietary blend of surfactants and non-pathogenic probiotics for immediate and extended cleaning.

- Ideal for food service environments, targets starches and fats
- Continues cleaning even after floor is dry
- Economical concentration for low end use cost
- No rinse formula saves time and labor

Item #	Size
25847-00	4 - 2 Liter FastDraw®
25804-00	4 - 1 Gal. Bottles
25805-00	5 Gal. Pail
25827-00	275 Gal. Tote

DRAIN / GREASE TRAP CLEANERS

Drain and Trap Treatment
Drain and Grease Trap Cleaner and Maintainer

Ready-To-Use



Probiotics work to degrade grease and fatty acids, keeping drain lines clear.

- Proprietary nutrients reduce production of harmful odor-inducing bacteria
- Neutral formula doesn't contain caustics or acids
- Won't damage pipes or traps

Item #	Size
260012-00	12 - 32 oz. Bottles
260004-00	4 - 1 Gal. Bottles
260005-00	5 Gal. Pail

Grease Trap and Drain Cleaner
Grease Trap and Drain Cleaner Blocks

Ready-To-Use



Releases beneficial probiotics into the drain or grease trap to digest FOG and maintain clean, free-flowing systems.

- Extended release block for continuous treatment eliminates the cost of daily or weekly treatments.
- Saves money by reducing the frequency of manual cleanouts, preventing blockages, and lowering grease disposal costs
- Reduces malodors associated with organic waste and sludge

Item #	Size
Z320C14-00	64 - 226 Gram Pucks

Drain Treatment Neem
Drain Treatment for Beverage Machines

Ready-To-Use



Formulated with probiotics to treat the drain lines and drain tray of beverage dispensing machines.

- Preventative maintenance tool, helps control build-up in tray, lines, drain
- Cleans and freshens
- Helps prevent formation of sugar snakes

Item #	Size
Z321C12-00	400 - 16 Gram Pucks

Dumpster Treatment
Dumpster Cleaner and Odor Eliminator

Concentrate 1:20



Triple odor control, fragrance, malodor counteractant and probiotic bacteria fight odors long after initial application.

- Rich clinging foam for extended cleaning and odor control
- Use on any dumpster, trash receptacles, trash chutes and loading docks
- Use with Betco Foam Gun for maximum performance

Item #	Size
260912-00	12 - 32 oz. Bottles
260904-00	4 - 1 Gal. Bottles
260905-00	5 Gal. Pail

DISPENSERS

Waredose 35 LL & DL

Automatic Dishwashing Dispensers



IOT warewash dispensing systems for automatic dish machines.

- IOT capable at no charge
- Remote access for troubleshooting and data management
- Economical and dependable work horse dispenser
- Versatile Add On Sanitizing pump option
- Tri roller heads for longer pump tube life
- Order Install Kit for each Waredose 35

Item #	Size
92899-00	1 - 35 LL Liquid Detergent & Rinse Aid Dispenser
92900-00	1 - 35 DL Solid Detergent & Liquid Rinse Aid Dispenser
92901-00	1 - 35 Add On Liquid Sanitizer Pump

Solid Automatic Dish Machine Bowls

Solid Detergent & Rinse Aid Bowls for Automatic Dish Machines



Solid dispensers for any automatic dish machine.

- Delivers 100% active solid detergent for economical dispensing and cost savings
- Solids for sustainability and employee safety
- Proven durability and reliability
- Rinse Aid includes solenoid and bowl
- Siphon breakers meet ASSE 1001 Standard

Item #	Size
91663-00	1 - Solid Warewash Detergent Bowl Dispenser
92261-00	1 - Solid Warewash Rinse Aid Bowl Dispenser (with AC Solenoid)
92457-00	1 - Solid Warewash Rinse Aid Bowl Dispenser (with DC Solenoid)

Solid Manual Product Bowls

Solid Pot & Pan & Presoak Bowls



Solid dispensers for three-compartment sinks and presoak.

- Delivers 100% active solid detergent for economical dispensing and cost savings
- Proven durability and reliability
- Solids for sustainability and employee safety
- Ball valve controls water and chemical flow into kitchen sink
- Siphon breakers meet ASSE 1001 Standard
- Kits include installation materials & cleaning and sanitizing test procedure wall charts for easy use

Item #	Size
92104-00	1 - Solid Manual Dispenser (Presoak & Pot & Pan Product)

Prosink 1 & 2

Liquid Dilution Station Dispensers



3-compartment sink and food service dilution stations.

- Economical and ensures correct dilutions
- Reliable and dependable work horse dispensers
- Simple set up and maintenance
- Order 3 Sink & Presoak Kit with each Prosink

Item #	Size
92879-00	1 - Prosink 1 High Flow Sink Dispenser (F Gap)
92880-00	1 - Prosink 2 High Flow Sink Dispenser (F Gap)

DISPENSERS

Drain Station Dispenser
AC or DC Drain Station



Automatically dispenses drain maintainer to keep drains clean and prevent clogged drains due to fats, oils, and greases.

- Simple to program and operate
- Dispenses from gallon bottles, 5 gallon pails, or 55 gallon drum
- Operates via AC or DC power

Item #	Size
91686-00	1 - AC Dispenser
91687-00	1 - DC Dispenser

Dumpster Spray System
Automatic Dumpster Spray System



Automatically treat dumpsters throughout the day with simple digital programming.

- Proven durability and reliability
- Ball valve controls water and product flow into kitchen sink
- Molded plastic siphon breakers meet ASSE 1001 Standard
- Solid concentrates are sustainable and economical
- Kits include cleaning and sanitizing test procedure wall charts for easy

Item #	Size
98474-00	1 - Dumpster Spray System

Foam Gun
Foam Gun for Dumpster Treatment



Produces a thick rich foam for extended contact time on vertical surfaces.

- No need to manually dilute, metering tips make sure you get the right dilution
- Use in conjunction with Dumpster Treatment for cleaning and deodorizing dumpsters and other trash receptacles
- Convenient small size and lightweight gun

Item #	Size
90273-00	1 - Foam Gun



SYMPPLICITY™

CLEAN - Save money, time, and water with premium products and programs that provide one-pass washing and, when necessary, superior rewash and reclaim performance

SAFE - Many products feature "no-contact" SureConnect dispensing for employee safety, environmental, performance, and cost-saving benefits

SIMPLE - Value added service, training resources, assessment tools, and expert field support ensure smooth operations, and streamlined product range reduces inventory and simplifies reordering



Laundry Solutions

One-Wash Clean Performance

Betco offers comprehensive solutions and a wide range of products to maintain the highest standards of cleanliness and fabric care in any laundry operation. Our programs maximize the effectiveness and efficiency of laundry processing to drive down total spend, including labor, linen replacement, and utilities.



BREAKS / BUILDERS

Symlicity™ Break
Alkaline Builder

Concentrate



Concentrated alkali builder contains water conditioning agents and anti-redeposition agents that prevent graying and dulling.

- Economical concentrated product for outstanding use cost
- Improves detergent performance
- Performs well in hard water
- SureConnect system enhances employee safety and ensures no spills or employee contact with concentrates

Item #	Size
47078-00	5 Gal. Pail
47077-00	15 Gal. Drum
47055-00	55 Gal. Drum

Symlicity™ Break Ultra
Super Concentrated Laundry Break

Concentrate



Ultra-concentrated alkaline builder breaks "soil to linen" bond.

- Formulated to work synergistically with Detergent Ultra in the break/suds cycle
- Outstanding water conditioning, it improves detergent performance delivering one wash clean results
- SureConnect system enhances employee safety and ensures no spills or employee contact with concentrates
- Recommended for use on all fabrics except for wool and silk
- Economical concentrated product for outstanding use cost

Item #	Size
49478-00	5 Gal. Pail
49477-00	15 Gal. Drum
49455-00	55 Gal. Drum

DETERGENTS

Symlicity™ Emulsifier
Emulsifying Detergent

Concentrate



Concentrated heavy duty detergent with emulsifying solvents for enhanced performance on difficult grease and oil soils.

- Economical concentrated product for outstanding use cost
- Effective for cleaning table linens and polyesters
- Effective in both warm and hot water
- SureConnect system enhances employee safety and ensures no spills or employee contact with concentrates
- Contains natural solvents, will not harm environment or linen

Item #	Size
47378-00	5 Gal. Pail

Symlicity™ Built Detergent
High Performance Built Detergent

Concentrate



Ultra-concentrated detergent with water conditioners and alkaline base prevents graying or dulling.

- "One shot" product eliminates need for break
- Effective in a variety of water conditions
- Economical concentrated product for outstanding use cost
- SureConnect system enhances employee safety and ensures no spills or employee contact with concentrates

Item #	Size
49278-00	5 Gal. Pail
49277-00	15 Gal. Drum
49255-00	55 Gal. Drum

Symlicity™ Detergent
High Performance Detergent

Concentrate



Concentrated, high performance detergent with brightening agents and springtime fresh fragrance.

- Prevents graying and dulling
- Can be used with or without a break
- Suitable for all temperatures
- Economical concentrated product for outstanding use cost
- SureConnect system enhances employee safety and ensures no spills or employee contact with concentrates

Item #	Size
47174-00	4 - 1 Gal. Bottles
47178-00	5 Gal. Pail
47177-00	15 Gal. Drum
47155-00	55 Gal. Drum

Symlicity™ Detergent Ultra
Super-Concentrated Laundry Detergent

Concentrate



Ultra concentrated high performance detergent removes difficult soils quickly.

- Ultra concentrated non-built detergent to be used synergistically for improved performance with Symlicity Break Ultra in the break/suds cycle
- Breaks the "soil to linen" bond
- Economical concentrated product for outstanding use cost
- SureConnect system enhances employee safety and ensures no spills or employee contact with concentrates

Item #	Size
49678-00	5 Gal. Pail
49677-00	15 Gal. Drum
49655-00	55 Gal. Drum



DETERGENTS

Symplicity™ Dye Free Fragrance Free Detergent High Performance Detergent

Concentrate



Same great cleaning performance as Betco's detergent but without dyes and fragrance that cause allergies and sensitivities in some customers.

- Prevents graying and dulling
- Suitable for all temperatures
- Economical concentrated product for outstanding use cost
- SureConnect system enhances employee safety and ensures no spills or employee contact with concentrates

Item #	Size
49878-00	5 Gal. Pail
49877-00	15 Gal. Drum

Symplicity™ Duet - OPL Detergent with Enzymes

Concentrate



Non-built detergent with enzymes delivers one-wash clean.

- Ultra concentrated synthetic detergent with powerful surfactants, soil devouring enzymes, and anti-redeposition agents
- Economical concentrated product for outstanding use cost
- Designed for use without the need for an alkaline break or an acid sour
- Safe on all water washable fabrics in hot or cold water
- SureConnect system enhances employee safety and ensures no spills or employee contact with concentrates

Item #	Size
49578-00	5 Gal. Pail
49577-00	15 Gal. Drum
49555-00	55 Gal. Drum

Symplicity™ Duet-S High Performance Detergent

Concentrate



100% active solid one-shot laundry detergent with enzymes and color-safe bleach.

- Cleans/brightens linens, even in cold water
- Low environmental impact with low VOCs and no phosphorus, APEs, NPEs, or EDTAs
- Economical 100% active ingredient formula
- Complete product evacuation to eliminate waste
- Compact size saves storage space
- Molded handle for ease of handling
- Prevents misuse and contact with concentrated product for enhanced employee safety

Item #	Size
47471-00	2 - 5 Pound Jars

Duet-L with Enzymes and Color Safe Destainer Liquid All Fabric Laundry Detergent

Concentrate



Super concentrated high performance detergent removes difficult soils quickly.

- Easy-to-use, single liquid product
- Cleans/brightens linens even in cold water
- Chlorine scavenger extends life of colored linen
- Low environmental impact with low VOCs and no phosphorus, APEs, NPEs, or EDTAs
- Economical concentrated product for outstanding use cost

Item #	Size
47504-00	4 - 1 Gal. Bottles
47505-00	5 Gal. Pail
47577-00	15 Gal. Drum
47555-00	55 Gal. Drum

DESTAINERS

Symplicity™ Destainer Chlorine Destainer

Concentrate



Ultra concentrated laundry destainer for use on whites and colorfast linens.

- Excellent labor-saving destaining power with optimum bleaching
- Brightens linen and extends useful life
- Economical concentrated product for outstanding use cost
- SureConnect system enhances employee safety and ensures no spills or employee contact with concentrates

Item #	Size
47774-00	4 - 1 Gal. Bottles
47778-00	5 Gal. Pail
47777-00	15 Gal. Drum
47755-00	55 Gal. Drum

Symplicity™ Color Safe Destainer Concentrated Color Safe Destainer

Concentrate



Ultra concentrated laundry destainer for use on all fabric types including colored fabrics.

- No chlorine, safe on colors
- Promotes longer fabric life
- Brightens linen with minimized reclaim
- Economical concentrated product for outstanding use cost
- SureConnect system enhances employee safety and ensures no spills or employee contact with concentrates

Item #	Size
47874-00	4 - 1 Gal. Bottles
47878-00	5 Gal. Pail
47877-00	15 Gal. Drum
47855-00	55 Gal. Drum

SOURS & SOFTENERS

Symlicity™ Sour
Laundry Neutralizer

Concentrate



Highly concentrated laundry sour for neutralizing alkalinity and controlling iron stains.

- Controls pH, eliminating skin irritation
- Neutralizes alkaline residues, extending linen life
- Prevents graying and yellowing stains
- Economical concentrated product for outstanding use cost
- SureConnect system enhances employee safety and ensures no spills or employee contact with concentrates

Item #	Size
48178-00	5 Gal. Pail
48177-00	15 Gal. Drum
48155-00	55 Gal. Drum

Symlicity™ Sour Ultra
Super-Concentrated Laundry Sour

Concentrate



Ultra-concentrated fabric neutralizer optimized for outstanding iron inhibition.

- Eliminates graying caused by iron in the water supply
- Restores pH balance, reducing risk of skin irritation
- Economical concentrated product for outstanding use cost
- SureConnect system enhances employee safety and ensures no spills or employee contact with concentrates

Item #	Size
49774-00	4 - 1 Gal. Bottles
49778-00	5 Gal. Pail
49777-00	15 Gal. Drum
49755-00	55 Gal. Drum

Symlicity™ Sour & Softener
Neutralizer and Fabric Softener

Concentrate



Concentrated liquid laundry sour and softener combination product with springtime fresh fragrance.

- Reduces static electricity and wrinkling
- Restores pH balance and reduces risk of skin irritation
- Dual action product reduces inventory and training
- Economical concentrated product for outstanding use cost
- SureConnect system enhances employee safety and ensures no spills or employee contact with concentrates

Item #	Size
48374-00	4 - 1 Gal. Bottles
48378-00	5 Gal. Pail
48377-00	15 Gal. Drum
48355-00	55 Gal. Drum

Symlicity™ Softener
Fabric Softener

Concentrate



Concentrated liquid fabric softener enhances operational efficiency with springtime fresh fragrance.

- Reduces static electricity and wrinkling
- Speeds up drying time, saves time and energy
- Economical concentrated product for outstanding use cost
- SureConnect system enhances employee safety and ensures no spills or employee contact with concentrates

Item #	Size
48278-00	5 Gal. Pail
48277-00	15 Gal. Drum

Symlicity™ Sanitizing Softener 550
Softener Sanitizer

Concentrate



Fabric softener concentrate reduces the number of odor-causing bacteria from wet contamination.

- Residual self-sanitizing activity
- Softens clothes, eliminates chafing
- Reduces static electricity and wrinkling
- Economical concentrated product for outstanding use cost
- SureConnect system enhances employee safety and ensures no spills or employee contact with concentrates

Item #	Size
47978-00	5 Gal. Pail
47955-00	55 Gal. Drum

SPOTTERS

Symplicity™ PRO G
Healthcare Prewash

Ready-To-Use

Item #	Size
48816-00	6 - 32 oz. Bottles w/3 Triggers



Targeted RTU spray for healthcare associated stain treatment.

- Designed for healthcare specific stains
- Effective on a variety of soils
- Reduces rewash
- Fast-acting, saves labor

Symplicity™ PRO S

Solvent Prewash for Broad Spectrum Organic Soils

Ready-To-Use

Item #	Size
48916-00	6 - 32 oz. Bottles w/3 Triggers



Designed for organic stains, including oils and grease.

- Reduces rewash, labor saving
- Fast-acting
- Versatile, effective on a variety of soils including shoe polish, oil based cosmetics, crayon, marker, shop grease, and tar
- Convenient, ready-to-use packaging

Symplicity™ PRO A

Prewash for Broad Spectrum Organic Stains

Ready-To-Use

Item #	Size
49016-00	6 - 32 oz. Bottles w/3 Triggers



Broad spectrum RTU enzyme spray for organic stain treatment.

- Designed for a broad spectrum of stains including grass, food, and more
- Reduces rewash, labor saving
- Fast-acting
- Convenient, ready-to-use packaging

Symplicity™ PRO R

Prewash for Rust and Metallic Stains

Ready-To-Use

Item #	Size
49116-00	6 - 32 oz. Bottles w/3 Triggers



Spray for rust, tannin and metallic stain treatment.

- Designed for rust and tannin stains
- Reduces rewash, labor saving
- Versatile, effective on a variety of soils
- Fast-acting
- Convenient ready-to-use packaging

RECLAIMS

Symplicity™ Reclaim C
Reclaim Powder for Color Linens

Ready-To-Use

Item #	Size
48679-00	6 - 2 Pound Jars



Formulated with water conditioners, high-alkaline salts, and colorsafe bleaching agents.

- Restores linen, preserves investment
- Economical powder concentrate saves money
- Treats a variety of soils and stains
- Pre-measured and easy to use

Symplicity™ Reclaim W

Reclaim Powder for White Linens

Ready-To-Use

Item #	Size
48579-00	6 - 2 Pound Jars



A blend of water conditioners, alkaline salts, and chlorine that removes deeply embedded stains.

- Restores linen, preserves investment
- Economical powder concentrate saves money
- Treats a variety of soils and stains
- Pre-measured and easy to use

Symplicity™ Reclaim R

Reclaim Powder for Rust and Tannin Linens

Ready-To-Use

Item #	Size
48779-00	6 - 2 Pound Jars



Reclaim powder for linen discolored from iron and alkali.

- Formulated with iron inhibiting organic acids
- Restores linen, preserves investment
- Economical powder concentration saves money
- Treats a variety of soils and stains
- Pre-measured and easy to use

DISPENSERS

LS 100 Laundry Controller

Multi-Washer Laundry Dispensing System



Suitable for use with up to 4 machines.

- IOT capable at no charge
- Remote access for troubleshooting and data management
- Excellent cost per washer, up to 4 washers in 1 dispenser
- Low maintenance with no pump tubes to replace
- Versatile 4 and 6 product version
- Order Install Kit for every 4 washers

Item #	Size
92842-00	1 - Controller for up to 4 Machines / 4 Products
92840-00	1 - Controller for up to 4 Machines / 6 Products
92977-00	1 - Controller for 2 Machines
92844-00	1 - Controller for 2 - 4 Machines
92846-00	1 - Trigger Interface Remote (1 for Each Washer)
92845-00	1 - Formula Selector (1 for Each Fixed Timer / Non-Programmable / Not AFS Washer)

Advantage Systems

Peristaltic Laundry Dispensing Systems



Laundry dispensers for 3, 4, and 5 products.

- Economical and reliable work horse dispenser
- Tri roller heads for longer pump tube life
- Dispenser includes signal interface and remote control
- Order Flush Manifold and Laundry Install Kit for each Advantage System

Item #	Size
92928-00	1 - Advantage System for up to 3 Products
92929-00	1 - Advantage System for up to 4 Products
92930-00	1 - Advantage System for up to 5 Products
92950-00	1 - Flush Manifold for up to 4 Products
92951-00	1 - Flush Manifold for up to 6 Products

Wash Basic L

Peristaltic 1 Product Dispenser



Multi-functional with signal or button operation.

- Economical and easy to set up and program
- Includes dispenser and button activation remote
- Tri roller heads for longer pump tube life
- Installation materials included

Item #	Size
92874-00	1 - Dispenser



Eliminate guesswork to accurately dilute chemical for greater time efficiency and cost savings up to 30%

Enhance cleaning staff safety by reducing the potential for accidental chemical contact and spills

A variety of 30+ high-performing cleaning and maintenance solutions meet a wide range of facility needs



Dilution Control Solutions

The Most Innovative, Simple, and Versatile Systems

Single or multiple product, wall mounted or portable, water access or not, Betco has a dilution control system that is right for you. Our flagship program, FastDraw[®], offers diverse dispensers to fill spray bottles, mop buckets, and automatic scrubbers and perform foaming spray applications, as well as spill-proof, number/color-coded bottles with built-in metering inserts.



CHEMICAL MANAGEMENT

FastDraw® Freedom
Portable Dispensing System



No wall space, no problem! One versatile system does it all.

- Fills spray bottles with little to no foam
- Sprays a clinging foam for extended contact on vertical surfaces.
- Fills buckets/autoscrubbers quickly and easily
- Hassle free operation, hook up the hose and turn the dial to choose the application
- Small, lightweight design for easy transportation

Item #	Size
91290-00	12 - Dispensers
93059-00	1 - Kit

FastDraw® Freedom Hose Kit
For Use with Portable Dispensing System



No wall space, no problem! One versatile system does it all.

- Contains a 55' durable water hose, male and female quick connect and shut off valve
- Makes it extremely easy to use the FastDraw Freedom

Item #	Size
93059-00	1 - Hose Kit

FastDraw® 1
One Product Chemical Management Dispenser



Small dispenser can be used virtually anywhere.

- Extremely easy to install and simple to change or replace product
- Instantly primes, when disengaged product drains back into container, no cross-contamination
- Numbered/color coded for simplified use/training
- Choose bottle or bucket fill options with the flick of a lever

Item #	Size
91043-00	1 - Action Gap Dispenser
91069-00	1 - Air Gap Dispenser

FastDraw® Rack
For Use with FastDraw Products



Holds 4 FastDraw Bottles.

- Durable metal rack can install next to FastDraw 1 dispenser
- Lockable to prevent tampering or theft

Item #	Size
91044-00	1 - Rack

FastDraw® Pro
4 Product Locking Chemical Management System



The most durable, versatile and simple 4 bay locking chemical management system on the market.

- Locking doors to prevent tampering or theft
- Space saving design, mounts to either a flat wall or in a corner
- Dispenses into both spray bottles and mop buckets/automatic scrubbers.
- Durable polypropylene construction, suitable for the toughest cleaning environments
- Bottle and bucket fill from each bay, simple one-hand bottle fill

Item #	Size
92682-00	1 - Action Gap Dispenser
92698-00	1 - Air Gap Dispenser

FastDraw® Foamer II
Foaming Dispenser



Excellent thick, clinging foam ideal for vertical surface cleaning.

- For use in large shower areas, food processing plants, walk-in coolers and other foaming applications
- Locks for continuous foaming action
- Rinse application without having to remove product
- Easily screws onto FastDraw bottle
- Surecomfort™ handle

Item #	Size
92216-00	1 - Dispenser

CHEMICAL MANAGEMENT

FastDose™

Chemical Management System



Ideal for portable dilution control.

- Simplified chemical management without a dispenser
- Small, convenient containers are perfect for portable operations
- Economical dilutions as high as 1/8 oz. per gallon (1:1024) for extremely low cost
- Perfect for retail settings, convenience stores, and contract cleaning uses

Item #	Product Name	Size
15048-00	Top Flite™	6 - 32 oz. FastDose™ Bottles
17848-00	pH7 Ultra	6 - 32 oz. FastDose™ Bottles
18148-00	Deep Blue Concentrate	6 - 32 oz. FastDose™ Bottles
18848-00	Daily Scrub SC	6 - 32 oz. FastDose™ Bottles
34148-00	Quat-Stat™ 5	6 - 32 oz. FastDose™ Bottles
168348-00	Reinforce	6 - 32 oz. FastDose™ Bottles

Green Earth® II

1 Button Dispenser



Simple low cost dispenser for one product use.

- Dilutes and dispenses one product into buckets or automatic scrubbers
- Economical, lowest cost dispenser
- Small size, uses very little wall space

Item #	Size
91162-00	1 - Dispenser

Green Earth® II 4 x 4

Multi-Product Dispenser



Convenient Multi-Product Dispenser.

- Dispenses up to eight products from one dispenser
- Simple and convenient one hand bottle fill
- Gas pump style hose for hands free filling

Item #	Size
92720-00	1 - Dispenser

Quarterpack

Chemical Management System



No wall space, no problem. Quarterpack is designed to use quart bottles that are formulated so one quart bottle can be added to a 5 gallon container, then filled with water.

- Sturdy rack holds up to four products
- May be used with bottles, mop buckets or autoscrubbers
- Economical design, simple and convenient to use

Item #	Size
90099-00	1 - Quarterpack Rack
90100-00	1 - 5 Gallon Container

PRODUCT SELECTION GUIDE				
PRODUCT NAME	FASTDRAW®	FASTDOSE™	QUARTERPACK	INFO
FLOOR CARE				
Betco® One Step	✓			pg. 8
Game Time Cleaner	✓			pg. 15
Extreme® Ultra	✓		✓	pg. 7
Crete Rx™ Densiclean™	✓			pg. 11
STG Cleaner	✓			pg. 13
FiberPRO® Es-Steam™	✓			pg. 13
Reinforce	✓	✓		pg. 9
Daily Scrub SC	✓	✓		pg. 8
Green Earth® Daily Floor Cleaner	✓			pg. 10
No-Rinse Floor Cleaner	✓			pg. 36
GENERAL CLEANING				
Deep Blue	✓	✓	✓	pg. 19
Clear Image	✓			pg. 19
Green Earth® Glass Cleaner	✓			pg. 19
Top Flite™	✓	✓	✓	pg. 18
Spectaculoso™	✓			pg. 18
pH7 Ultra	✓	✓		pg. 8
Green Earth® Peroxide Cleaner	✓			pg. 18
Push® Classic Mint	✓			pg. 18
Push® Lemon and Sage	✓			pg. 18
Green Earth® Natural All Purpose Cleaner	✓			pg. 19
RESTROOM				
AF79 Concentrate	✓		✓	pg. 25
Sure Bet™ II	✓			pg. 24
Green Earth® Restroom Cleaner	✓			pg. 25

PRODUCT SELECTION GUIDE

PRODUCT NAME	FASTDRAW®	FASTDOSE™	QUARTERPACK	INFO
DISINFECTANTS				
AF315	✓		✓	pg. 27
pH7Q	✓			pg. 27
pH7Q Dual	✓			pg. 27
Quat-Stat™ 5	✓	✓		pg. 27
Triforce	✓			pg. 27
Versifect™	✓			pg. 27
Daily Disinfectant Dual	✓			pg. 27
FOOD SERVICE				
Spray Foam Ultra	✓			pg. 35
Symplicity™ Sanibet™ Multi-Range	✓			pg. 34
Symplicity™ In-Sync	✓			pg. 33
Symplicity™ Citrusuds™	✓			pg. 33
DEODORIZERS				
SenTec® Mountain Meadow	✓			pg. 29
SenTec® Pure Linen	✓			pg. 29
Best Scent™ Ocean Breeze	✓			pg. 29
INDUSTRIAL				
Citrus Chisel	✓		✓	pg. 21
Speedex Concentrate	✓			pg. 21
Green Earth® Velocity®	✓			pg. 21
Green Earth® Natural Degreaser	✓			pg. 21



Wide selection of world-class foaming and lotion/gel cleanser and sanitizer formulas and fragrances

Choose between top-of-the-line dispensing systems or small countertop and high-volume bulk solutions

Training resources ensure successful implementation of a complete hand hygiene program



Hand Hygiene Solutions

Formats That Best Serve Your Facility's Needs

Your one partner in hand hygiene, we have a comprehensive line for a healthy environment in any facility. Clario® is the most versatile, cost-effective program for institutional dispensing, Triton sets a new value in heavy-duty industrial dispensing, and we even have you covered with bulk/countertop options for convenient deployment anywhere.



FOAMING SKIN CLEANSERS

Green Earth® Clear Foaming Skin Cleanser

Dye Free and Fragrance Free Foaming Skin Cleanser



Cleans hands without impacting the skin, will not cause dryness or skin irritation, encourages frequent hand washing.

- Dye free and fragrance free
- Gentle and mild to hands, will not cause dryness or irritation
- Encourages frequent hand washing

Item #	Size
71504-00	4 - 1 Gal. Bottles
71529-00	6 - 1000 mL Clario Refills
715H2-00	6 - 1000 mL Clario C3 Touch Free Refills

Green Earth® Foaming Skin Cleanser

Luxurious Foaming Skin Cleanser



Foaming skin cleanser with emollients.

- Gentle and mild to hands, will not cause dryness or irritation
- Has a very light, pleasant scent
- Encourages frequent hand washing

Item #	Size
78104-00	4 - 1 Gal. Bottles
78129-00	6 - 1000 mL Clario Refills
781H2-00	6 - 1000 mL Clario C3 Touch Free Refills

Pink Foaming Skin Cleanser

Mildly Fragranced Foaming Skin Cleanser



Ultra mild and gentle to hands.

- Emollients moisturize skin, encouraging frequent hand washing
- Cleans light to medium soils
- Mild scent

Item #	Size
75004-00	4 - 1 Gal. Bottles
75029-00	6 - 1000 mL Clario Refills
750H2-00	6 - 1000 mL Clario C3 Touch Free Refills
750E9-00	12 - 550 mL Pump Bottles
75055-00	55 Gal. Drum

E2 Antibacterial Foaming Skin Cleanser

Dye Free and Fragrance Free Foaming Cleanser



E2 rated antibacterial foaming skin cleanser for food service and healthcare applications.

- Contains 0.13% benkalkonium chloride for >99.99% broad spectrum germ reduction in 15 seconds
- NSF E2 rated for use in food service
- Clean rinsing, leaving hands without dryness, stickiness, or residue

Item #	Size
71729-00	6 - 1000 mL Clario Refills
71755-00	55 Gal. Drum

Foaming Antibacterial Skin Cleanser

Foaming Skin Cleanser



Aloe enriched, antibacterial foaming skin cleanser.

- Contains 0.13% benkalkonium chloride for >99.99% broad spectrum germ reduction in 15 seconds
- Cleans and moisturizers, will not cause dryness or skin irritation
- Quick-acting antibacterial foam soap for general hand washing

Item #	Size
75104-00	4 - 1 Gal. Bottles
75129-00	6 - 1000 mL Clario Refills
75129-07	6 - 1000 mL Clario Refills (Canada)
751H2-00	6 - 1000 mL Clario C3 Touch Free Refills
751H2-07	6 - 1000 mL Clario C3 Touch Free Refills (CA)
75155-00	55 Gal. Drum

UltraBlue™ Antibacterial Foaming Skin Cleanser

Luxury Foam Antibacterial Skin Cleanser



Ultra thick foam helps prevent the spread of infection and encourages frequent hand washing.

- Ideal for healthcare facilities
- Contains 0.13% benkalkonium chloride for >99.99% broad spectrum germ reduction in 15 seconds
- For skin care use in daycare, hospitals, nursing homes, physician offices, dental offices and clinics

Item #	Size
75929-00	6 - 1000 mL Clario Refills
759H2-00	6 - 1000 mL Clario C3 Touch Free Refills
759E9-00	12 - 550 mL Pump Bottles

LOTION SKIN CLEANSERS

Green Earth® Lotion Skin Cleanser

Moisturizing Lotion Skin Cleanser



Luxurious lotion skin cleanser.

- Gentle to hands, cleans light to medium soils
- Contains moisturizers, will not cause dryness or irritation
- Fresh and clean fragrance

Item #	Size
78329-00	6 - 1000 mL Clario Refills
783H2-00	6 - 1000 mL Clario C3 Touch Free Refills
78304-00	4 - 1 Gal. Bottles

Pink Lotion Skin Cleanser

Pearlized Skin Cleanser with Emollients



pH balanced ultra mild lotion skin cleanser formulated with emollients.

- Ultra mild lotion soap gentle moisturizes the skin while protecting skin health
- Clean rinsing and non-irritating
- Refreshing scent for a pleasant hand wash

Item #	Size
11219-00	12 - 900 mL Bag in Box
11229-00	6 - 1000 mL Clario Refills
112H2-00	6 - 1000 mL Clario C3 Touch Free Refills
11204-00	4 - 1 Gal. Bottles
11255-00	55 Gal. Drum

Antibacterial Lotion Skin Cleanser

Pearlized Antibacterial Skin Cleanser with Chloroxylenol (PCMX)



Gentle on the skin, will not cause dryness or irritation.

- Contains 0.375% PCMX to help reduce microorganisms on the skin
- Formulated with moisturizers, will not cause dryness or skin irritation
- Tropical hibiscus scent encourages frequent hand washing

Item #	Size
14119-00	12 - 900 mL Bag in Box
14129-00	6 - 1000 mL Clario Refills
141H2-00	6 - 1000 mL Clario C3 Touch Free Refills
14104-00	4 - 1 Gal. Bottles
14155-00	55 Gal. Drum

Pearlized White Lotion Skin Cleanser

Lotion Skin Cleanser with Emollients



Leaves hands soft and refreshed.

- pH balanced so it's non-drying and non-irritating
- Leaves no residue, hands feel clean and soft
- Gentle enough for frequent hand washing

Item #	Size
71904-00	4 - 1 Gal. Bottles

HAND SANITIZERS

Alcohol Free Foaming Hand Sanitizer

Freshly Scented, Alcohol Free Foaming Hand Sanitizer



For alcohol restricted and non-flammable applications.

- For use when soap and water are not available
- Contains 0.13% benzalkonium chloride for effective germ reduction without alcohol
- Leaves hands fresh with no sticky residue
- Creamy foam is enriched with emollients and will not cause dryness or irritation.

Item #	Size
75229-00	6 - 1000 mL Clario Refills
752H2-00	6 - 1000 mL Clario C3 Touch Free Refills
75204-00	4 - 1 Gal. Bottles
75255-00	55 Gal. Drum
75227-00	275 Gal. Tote

Advanced Alcohol Foaming Hand Sanitizer

Ethanol Based Foaming Hand Sanitizer with Aloe



>99.999% broad spectrum germ reduction within 15 seconds.

- For use when soap and water are not available
- 70% ethyl alcohol reduces germs on hands
- Emollients moisturize the skin, will not cause dryness or irritation

Item #	Size
79529-00	6 - 1000 mL Clario Refills
79529-07	6 - 1000 mL Clario Refills (Canada)
795H2-00	6 - 1000 mL Clario C3 Touch Free Refills
795H2-07	6 - 1000 mL Clario C3 Touch Free Refills (CA)
795E9-00	12 - 550 mL Pump Bottles
79504-00	4 - 1 Gal. Bottles
79555-00	55 Gal. Drum

HAND SANITIZERS

Advanced Alcohol Gel Sanitizer

Ethanol Based Gel Hand Sanitizer with Aloe



Fast drying, lightly scented gel sanitizer.

- 99.999% broad spectrum germ reduction within 15 seconds
- For use when soap and water are not available
- 70% ethyl alcohol evaporates quickly with no sticky residue
- Moisturizes and conditions skin

Item #	Size
79629-00	6 - 1000 mL Clario Refills
796H2-00	6 - 1000 mL Clario C3 Touch Free Refills
796H2-07	6 - 1000 mL Clario C3 Touch Free Refills (CA)
796E9-00	12 - 500 mL Pump Bottles
79604-00	4 - 1 Gal. Bottles
79655-00	55 Gal. Drum

HAIR & BODY CLEANSERS

Foaming Hand, Hair and Body Shampoo

Vitamin E Enriched 3-in-1 Hand, Hair and Body Shampoo



Thick, rich foam is gentle on the skin and hair, and will not cause dryness or irritation.

- Uses about half the water and formula vs Lotion/Gel formulations
- Cleans and moisturizes with a fresh, neutral scent
- For skin care use in a variety of public facilities including schools, daycare centers, health spas, locker rooms, hotels and resorts

Item #	Size
75329-00	6 - 1000 mL Clario Refills
75304-00	4 - 1 Gal. Bottles
75355-00	55 Gal. Drum

Lotion Hand, Hair and Body Shampoo

Mandarin Grapefruit scented 3-in-1 Hand, Hair and Body Shampoo



Designed to leave hair and skin delicate, soft, and conditioned.

- Clean rinsing leaves hair silky and manageable
- More economical and sanitary than bar soaps
- For skin care use in a variety of public facilities including schools, daycare centers, health spas, locker rooms, hotels and resorts

Item #	Size
77329-00	6 - 1000 mL Clario Refills
77362-00	6 - 2 Liter Triton Bottles
77304-00	4 - 1 Gal. Bottles
77355-00	55 Gal. Drum

INDUSTRIAL SKIN CLEANSERS

HD Orange Hand Cleaner

Heavy Duty Hand Cleaner with Citrus and Fine Pumice



Heavy duty skin cleanser, with citrus and pumice.

- Ideal for heavy duty industrial use
- Formulated with natural citrus and fine milled Aztec pumice for quick removal of grease and grime
- For skin care use in a variety of industrial settings including manufacturing, machine shops, maintenance areas and automotive shops

Item #	Size
79262-00	6 - 2 Liter Triton Bottles
79231-00	4 - 4 Liter Triton Bottles
79244-00	4 - 1 Gal. Flat Top Disp.
79255-00	55 Gal. Drum

XHD Hand Cleaner

Extra Heavy Duty Hand Cleaner with Soy and Walnut Shell Scrubber



Heavy duty skin cleanser for removing heavy grease, carbon, tar and oil.

- Contains all natural, refined walnut shell scrubbing particles
- Contains conditioners to prevent drying and cracking
- For skin care use in a variety of industrial settings including manufacturing, machine shops, maintenance areas and automotive shops

Item #	Size
79362-00	6 - 2 Liter Triton Bottles
79331-00	4 - 4 Liter Triton Bottles

DISPENSERS & ACCESSORIES

Clario® C3 Manual Dispensers

Foaming and Lotion



Clario® C3 is designed for modern facilities that demand both performance and sustainability.

- Industry-leading lowest cost per hand wash
- Permanent pump reduces waste by 94%
- Offers 3 adjustable shot sizes (0.5 ml, 1.0 ml, 1.5 ml)
- Enhanced permanent foam pump for thick "moussey" lather and at least 250,000 activations
- Dispenser has locked or open functionality
- ADA compliant
- Sealed refills eliminate contamination
- 98% evacuation provides more usable product

Item #	Size
93021-00	6 - Manual Foam Black
93022-00	6 - Manual Foam White
93023-00	6 - Manual Lotion Black
93024-00	6 - Manual Lotion White
93075-00	1 - Permanent Pump - Foam
93076-00	1 - Permanent Pump - Lotion/Gel
93079-00	1 - Hex Key for Manual & Touch Free dispenser locking/unlocking

Clario® C3 Touch Free Dispensers

Foaming and Lotion



Clario® C3 is designed for modern facilities that demand both performance and sustainability.

- Industry-leading lowest cost per hand wash
- Batteries are included, and soft-start technology supplies the industry's longest lifespan (4 years)
- Permanent pump reduces waste by 94%
- Offers 3 adjustable shot sizes (0.5 ml, 1.0 ml, 1.5 ml)
- Enhanced permanent foam pump for thick "moussey" lather and at least 250,000 activations
- Dispenser has locked or open functionality
- ADA compliant
- Sealed refills eliminate contamination
- 98% evacuation provides more usable product

Item #	Size
93025-00	6 - Touch Free Foam Black
93026-00	6 - Touch Free Foam White
93027-00	6 - Touch Free Lotion Black
93028-00	6 - Touch Free Lotion White
93077-00	1 - Permanent Pump - Foam
93078-00	1 - Permanent Pump - Lotion/Gel
93079-00	1 - Hex Key for Manual & Touch Free dispenser locking/unlocking
93080-00	1 - Pump Retainer Clip

Drip Tray

Plastic Dispenser Drip Tray



Plastic dispenser tray can be used with Clario® Touch Free and Clario manual dispensers.

- Catches any misses to keep floors clean
- Easily attaches to wall under each dispenser

Item #	Size
92351-00	1 - Drip Tray

Clario® TF Black Floor Stand

Black Metal Floor Stand Designed for Clario® Touch Free Dispenser



Black metal floor stand makes sanitizing convenient.

- Sturdy construction and stable design prevents tipping
- Easy installation, hardware included
- Pleasing design fits any facility
- Ideal for use where wall mounted dispensers are not practical

Item #	Size
92060-00	1 - Floor Stand

Clear Plastic Dispenser Stand

Tabletop Stand



Clear plastic stand is designed for use with hand hygiene dispensers in tabletop or portable settings.

- Provides a professional, freestanding option for dispensing hand hygiene products—no wall mounting required
- Compatible with Clario C3 Touch Free and Manual dispensers
- Durable, lightweight, and easy to clean

Item #	Size
91250-00	1 - Tabletop Stand

DISPENSERS

Flat Top Gallon Dispenser Pump and Wall Bracket

Pump and Wall Bracket for Flat Top Gallon Dispensers



Great for both grit and lotion hand cleansers.

- For use with flat top dispenser containers
- For skin care use in a variety of industrial settings including manufacturing, machine shops, maintenance areas and automotive shops

Item #	Size
90106-00	1 - Dispenser Pump
90105-00	1 - Wall Bracket

Triton® HD 2 L Dispenser

Dispenser for 2 Liter Triton Bottles



Heavy duty, excellent for high traffic, high volume areas.

- Sanitary factory sealed bottle
- Precise portion control
- Opaque bottle makes it easy to determine when it's time to replace

Item #	Size
91827-00	6 - 2 Liter Dispensers

Triton® HD 4 L Dispenser

Dispenser for 4 Liter Triton Bottles



Heavy duty, excellent for high traffic, high volume areas.

- Opaque bottle makes it easy to determine when it's time to replace
- Sanitary factory sealed bottle
- Precise portion control

Item #	Size
91828-00	4 - 4 Liter Dispensers

Gallon Bottle Pumps

Gel and Foam Options



Dispense hand hygiene formulas with ease using pumps designed for gallon bottles.

- Built with sturdy plastic components for long-lasting use in high-traffic environments
- 8cc lotion/gel pump is ideal for thicker formulas
- 0.6 ml foam pump is tailored specifically for foaming products

Item #	Size
92521-00	25 - 8cc Lotion/Gel Pumps
92533-00	20 - 0.6 mL Foam Pumps



Our solutions boast highest standards of performance with top-of-class specifications to clean better, faster

Smart features and technologies make operations more efficient, saving time, effort, and money

Rugged durability and industry-leading warranty and product support programs means units will provide years of exceptional cleaning power



Equipment Innovations

Built to Perform, Designed to Last

Our comprehensive line of cleaning and maintenance products includes a full range of cutting-edge equipment. From compact and rider automatic scrubbers, to durable workhorse burnishers and floor machines, to the market's most efficient stripping machines, our products meet the unique needs of facilities of all types and sizes, allowing them to do more with less.



SMALL AREA AUTOMATIC SCRUBBERS

Genie™ B

All Purpose Automatic Micro-Scrubber

Up to 11,560 sq. ft. / hr.



Goes anywhere a mop and bucket can go!

- Compact size cleans tight spaces
- Low 69 dB noise level is ideal for use in occupied spaces
- Onboard charger with maintenance free battery
- Use for daily scrubbing of VCT, resilient, concrete, textured/grouted floors
- General purpose scrub brush included

Length: 27"
Width: 17"
Height: 17" storage
Height: 44" upright

Item #	Description
E83039-00	Genie™ B All Purpose Automatic Scrubber

Optional Accessories

- E82408-00 - Pad Driver
- E82526-00 - Brush, Medium Scrubbing
- EP50061-00 - Battery & Charger Kit

GENESYS™ 20" AUTOMATIC SCRUBBERS

GeneSys™ 20D

20" Automatic Scrubber w/ Pad Assist

Up to 22,500 sq. ft. / hr.



Clean faster and with less effort.

- Best performance specifications in its class
- SoliChem™ Technology (option) reduces daily chemical costs by up to 80%
- Airolflex® Squeegee Technology (standard) increases vacuum by up to 40%
- Fortify™ Asset Protection & Management suite focuses on extending machine life and lowering cost of ownership
- One 20" pad holder included

Length: 51"
Height: 42"
Width: 21" w/o squeegee
Width: 30" w/ squeegee

Item #	Description
E26700-00	w/ (2) 12V 130AH Wet Battery, On-board Charger
E26704-00	w/ (2) 12V 110AH AGM Battery, On-board Charger

Optional Accessories

- E29540-00 General Purpose Brush - 20-inch
- E29011-00 Red Pads - 20-inch
- SoliChem™ Technology
- Wet Battery Protection System
- Armor™ Telemetry
- Programmable Timer Lock-out
- SoliChem™ Chemicals - pH7 Ultra or Grease Solv

GeneSys™ 20DT

20" Automatic Scrubber w/ Transaxle Drive

Up to 22,500 sq. ft. / hr.



Clean faster and with less effort.

- Best performance specifications in its class
- SoliChem™ Technology (option) reduces daily chemical costs by up to 80%
- Airolflex® Squeegee Technology (standard) increases vacuum by up to 40%
- Fortify™ Asset Protection & Management suite focuses on extending machine life and lowering cost of ownership
- One 20" pad holder included

Length: 51"
Height: 42"
Width: 21" w/o squeegee
Width: 30" w/ squeegee

Item #	Description
E26881-00	w/ (1) 24V 60AH Lithium-Ion Battery, Off-Board Charger
E26891-00	w/ (2) 24V 60AH Lithium-Ion Battery, Off-Board Charger
E26800-00	w/ (2) 12V 130AH Wet Battery, On-board Charger
E26804-00	w/ (2) 12V 110AH AGM Battery, On-board Charger

Optional Accessories

- E29540-00 General Purpose Brush - 20-inch
- E29011-00 Red Pads - 20-inch
- SoliChem™ Technology
- Wet Battery Protection System
- Armor™ Telemetry
- Programmable Timer Lock-out
- SoliChem™ Chemicals - pH7 Ultra or Grease Solv

GeneSys™ 20ORB

20" Orbital Automatic Scrubber w/ Traction Drive

Up to 22,500 sq. ft. / hr.



Powerful cleaning and finish removal in one compact, quiet design.

- Boasts 110 lb of down pressure - the highest down pressure in the category
- Removes layers of even the hardest finishes in one pass
- Ideal for day cleaning or finish removal at up to 80% faster than traditional stripping
- SoliChem™ Technology (option) reduces daily chemical costs by up to 80%

Length: 46"
Height: 42"
Width: 21" w/o squeegee
Width: 30" w/ squeegee

Item #	Description
E26981-00	w/ (1) 24V 60AH Lithium-Ion Battery, Off-Board Charger
E26991-00	w/ (2) 24V 60AH Lithium-Ion Battery, Off-Board Charger
E26900-00	w/ (2) 12V 130AH Wet Battery, On-board Charger
E26904-00	w/ (2) 12V 110AH AGM Battery, On-board Charger

Optional Accessories

- E29540-00 General Purpose Brush - 20-inch
- E29011-00 Red Pads - 20-inch
- SoliChem™ Technology
- Wet Battery Protection System
- Armor™ Telemetry
- Programmable Timer Lock-out
- SoliChem™ Chemicals - pH7 Ultra or Grease Solv

Airolflex® is a registered trademark of the Midwest Rubber Company
Armor™ is a trademark of USA Clean

CREWMAN™ 20" AUTOMATIC SCRUBBERS

Crewman™ AS20B

20" Automatic Scrubber w/ Pad Assist

Up to 15,000 sq. ft. / hr.



Simple design and rugged construction provide great value.

- Simple touch button controls make training easy
- Weighted squeegee maximizes water recovery
- Sleek body design is perfect for small and congested areas
- 20" pad holder is included

Length: 43"
Height: 38"
Width: 22" w/o squeegee
Width: 30" w/ squeegee

Item #	Description
E29968-00	w/ (2) 12V 115AH Wet Battery, 12 Amp Charger
E29969-00	w/ (2) 12V 130AH Wet Battery, 12 Amp Charger
E29967-00	w/ (2) 12V 110AH AGM Battery, 12 Amp Charger

Optional Accessories

- E88330-00 - Brush, General Scrubbing
- E88269-00 - Brush, Medium Scrubbing
- E88270-00 - Brush, Heavy Duty Scrubbing
- E88271-00 - Brush, Grit Stripping

GENESYS™ MID SIZE AUTOMATIC SCRUBBERS

GeneSys™ 26D

26" Disk Auto Scrubber

Up to 29,000 sq. ft. / hr.



Clean faster and with less effort.

- Best performance specifications in its class
- SoliChem™ Technology (standard) reduces daily chemical costs by up to 80%
- Airoflex® Squeegee Technology (standard) increases vacuum by up to 40%
- Fortify™ Asset Protection & Management suite focuses on extending machine life and lowering cost of ownership
- Two 13" pad holders included

Length: 55"
Width: 28" w/o squeegee
Width: 35" w/ squeegee
Height: 44"

Item #	Description
E27280-00	GeneSys™ 26D - (1) 24V 150AH Lithium-Ion Battery
E27291-00	GeneSys™ 26D - (1) 24V 200AH Lithium-Ion Battery
E27200-00	GeneSys™ 26D - (4) 6V 260AH Wet Battery
E27212-00	GeneSys™ 26D - (4) 6V 220AH AGM Battery

Additional configurations available

Optional Accessories

- Wet Battery Protection System
- Armor™ Telemetry
- Bluetooth Battery Gauge
- Programmable Timer Lock-out
- General Purpose Brush
- SoliChem™ Chemicals - pH7 Ultra or Grease Solv

GeneSys™ 28D

28" Disk Auto Scrubber

Up to 31,500 sq. ft. / hr.



Clean faster and with less effort.

- Best performance specifications in its class
- SoliChem™ Technology (standard) reduces daily chemical costs by up to 80%
- Airoflex® Squeegee Technology (standard) increases vacuum by up to 40%
- Fortify™ Asset Protection & Management suite focuses on extending machine life and lowering cost of ownership
- Two 14" pad holders included

Length: 56"
Width: 30" w/o squeegee
Width: 40" w/ squeegee
Height: 44"

Item #	Description
E7380-00	GeneSys™ 28D - (1) 24V 150AH Lithium-Ion Battery
E27391-00	GeneSys™ 28D - (1) 24V 200AH Lithium-Ion Battery
E27300-00	GeneSys™ 28D - (4) 6V 260AH Wet Battery
E27312-00	GeneSys™ 28D - (4) 6V 220AH AGM Battery

Additional configurations available

Optional Accessories

- Wet Battery Protection System
- Armor™ Telemetry
- Bluetooth Battery Gauge
- Programmable Timer Lock-out
- General Purpose Brush
- SoliChem™ Chemicals - pH7 Ultra or Grease Solv

GeneSys™ 32D

32" Disk Auto Scrubber

Up to 36,000 sq. ft. / hr.



Clean faster and with less effort.

- Best performance specifications in its class
- SoliChem™ Technology (standard) reduces daily chemical costs by up to 80%
- Airoflex® Squeegee Technology (standard) increases vacuum by up to 40%
- Fortify™ Asset Protection & Management suite focuses on extending machine life and lowering cost of ownership
- Two 16" pad holders included

Length: 59"
Width: 34" w/o squeegee
Width: 45" w/ squeegee
Height: 44"

Item #	Description
E27580-00	GeneSys™ 32D - (1) 24V 150AH Lithium-Ion Battery
E27591-00	GeneSys™ 32D - (1) 24V 200AH Lithium-Ion Battery
E27500-00	GeneSys™ 32D - (4) 6V 260AH Wet Battery
E27512-00	GeneSys™ 32D - (4) 6V 220AH AGM Battery

Additional configurations available

Optional Accessories

- Wet Battery Protection System
- Armor™ Telemetry
- Bluetooth Battery Gauge
- Programmable Timer Lock-out
- General Purpose Brush
- SoliChem™ Chemicals - pH7 Ultra or Grease Solv

GeneSys™ 28ORB

28" Orbital Auto Scrubber

Up to 31,500 sq. ft. / hr.



Clean faster and with less effort.

- Boasts 185 lb of down pressure - the highest down pressure in the category
- Removes layers of even the hardest finishes in one pass
- Ideal for day cleaning or finish removal at up to 80% faster than traditional stripping
- SoliChem™ Technology (option) reduces daily chemical costs by up to 80%

Length: 54"
Width: 29" w/o squeegee
Width: 40" w/ squeegee
Height: 44"

Item #	Description
E27480-00	GeneSys™ 28ORB - (1) 24V 150AH Lithium-Ion Battery
E27491-00	GeneSys™ 28ORB - (1) 24V 200AH Lithium-Ion Battery
E27400-00	GeneSys™ 28ORB - (4) 6V 260AH Wet Battery
E27412-00	GeneSys™ 28ORB - (4) 6V 220AH AGM Battery

Additional configurations available

Optional Accessories

- Wet Battery Protection System
- Armor™ Telemetry
- Bluetooth Battery Gauge
- Programmable Timer Lock-out
- General Purpose Brush
- SoliChem™ Chemicals - pH7 Ultra or Grease Solv

Airoflex® is a registered trademark of the Midwest Rubber Company
Armor™ is a trademark of USA Clean

STEALTH™ AUTOMATIC RIDING SCRUBBERS

Stealth™ DRS21BT MicroRiding Scrubber

Up to 30,000 sq. ft. / hr.



The most compact ride-on scrubber.

- Cleans 30,000 square feet per hour, reducing cleaning costs by 36%
- Exclusive ECO-Mode technology reduces noise level to 54 dBA and lowers energy consumption
- Large tank size provides extended runtime
- 21" pad holder included

Length: 52"
Height: 47"
Width: 23" w/o squeegee
Width: 30" w/ squeegee

Item #	Description
E29961-00	w/ (2) 12V 130AH Wet Battery, 12 Amp Charger
E29962-00	w/ (2) 12V 110AH AGM Battery, 12 Amp Charger
E29963-00	w/ (2) 12V 155AH Wet Battery, 12 Amp Charger

Optional Accessories

- E22654-00 - Brush, General Scrubbing
- E22655-00 - Brush, Medium Scrubbing
- E22656-00 - Brush, Heavy Duty Scrubbing

Stealth™ DRS26BT Automatic Rider Scrubber

Up to 42,000 sq. ft. / hr.



Highest productivity, simple design.

- Innovative design is 4X quieter than other automatic scrubbers on the market
- 1-Touch Intelligent Drive Control System
- Simple operator controls
- Ideal for day cleaning
- Two 13" pad holders included

Length: 62"
Height: 54"
Width: 27" w/o squeegee
Width: 35" w/ squeegee

Item #	Description
E29926-00	w/ (4) 6V 235AH Wet Battery, 25 Amp Charger
E29927-00	w/ (4) 6V 200AH AGM Battery, 25 Amp Charger

Optional Accessories

- E81681-00 - Brush, General Scrubbing
- E82850-00 - Brush, Medium Scrubbing
- E82851-00 - Brush, Heavy Duty Scrubbing
- E82852-00 - Brush, Grit Stripping

Stealth™ DRS32BT Automatic Rider Scrubber

Up to 55,000 sq. ft. / hr.



Highest productivity, simple design.

- Innovative design is 4X quieter than other automatic scrubbers on the market
- 1-Touch Intelligent Drive Control System
- Simple operator controls
- Ideal for day cleaning
- Two 16" pad holders included

Length: 62"
Height: 54"
Width: 33" w/o squeegee
Width: 41" w/ squeegee

Item #	Description
E29931-00	w/ (4) 6V 235AH Wet Battery, 25 Amp Charger
E29932-00	w/ (4) 6V 200AH AGM Battery, 25 Amp Charger

Optional Accessories

- E22093-00 - Brush, General Scrubbing
- E89557-00 - Brush, Medium Scrubbing
- E22092-00 - Brush, Heavy Duty Scrubbing
- E22094-00 - Brush, Grit Stripping

HIGH SPEED BURNISHERS

Crewman™ 1600 / Crewman™ 2000 20" High Speed Burnishers

Up to 16,000 sq. ft. / hr.



Value positioned.

- Fully adjustable handle can be used in floating or locked position
- Rugged durability, heavy duty 1.5 hp motor
- Precision balanced, flexible pad driver offers an even burnish
- Use for dry and restorative burnishing

Pad size: 20"

Item #	Description
E83015-00	Crewman™ 1600 - 20" High Speed Burnisher
E83016-00	Crewman™ 2000 - 20" High Speed Burnisher

Optima XR Series High Speed Burnishers

Up to 34,000 sq. ft. / hr.



Up to 27% more fuel efficient.

- XR (Xtended Run) due to exclusive, high-efficiency fuel delivery system
- Increased gloss with increased pad speed
- Powerful Kawasaki 603cc engine with certified EPA emissions
- Premium cast aluminum deck and heavy-duty components
- Industry leading 3-year warranty

Pad sizes: 21", 27"

Item #	Description
E12800-00	Optima XR - 21" Propane Burnisher
E12830-00	Optima XR - 27" Propane Burnisher
E12850-00	Optima XR - 27" Propane Burnisher w/Dust Control

Optional Accessories

- Emission Monitoring System
- Centrifugal Clutch
- Dust Control (27 inch only)



FLOOR MACHINES

Crewman™ 17HD / Crewman™ 20HD Standard Floor Machines

Up to 1,100 sq. ft. / hr.



Value positioned.

- Precision balancing reduces operator fatigue
- Rugged durability, heavy-duty 1.5 hp motor, triple planetary steel gearbox
- Use for stripping, scrubbing, spray buffing and carpet bonneting

Pad size: 17"
Pad size: 20"



Item #	Description
E83013-00	Crewman™ 17HD - 17" Standard Floor Machine
E83014-00	Crewman™ 20HD - 20" Standard Floor Machine
Optional Accessories	
<ul style="list-style-type: none"> • E83186-00 - Pad Holder • E87001-00 - Poly Scrub Brush • E87002-00 - Nylon Carpet Brush • E87003-00 - Brush, Grit Stripping • E87004-00 - Brush, Grit Scrubbing • E83187-00 - Solution Tank 	

Foreman® 20DS 20" Dual Speed Floor Machine

Up to 1,100 sq. ft. / hr.



Versatile, select 175 or 330 RPM to strip, scrub or buff.

- Hour meter to manage maintenance and usage
- Durable roto-mold construction, heavy duty 1.5 hp motor, triple planetary steel gearbox
- Use for stripping, scrubbing, spray buffing and carpet bonneting

Pad size: 20"



Item #	Description
E83010-00	Foreman® 20DS - 20" Dual Speed Floor Machine
Optional Accessories	
<ul style="list-style-type: none"> • E83185-00 - Pad Holder • E87012-00 - Poly Scrub Brush • E87013-00 - Nylon Carpet Brush • E87014-00 - Brush, Grit Stripping • E87015-00 - Brush, Grit Scrubbing • E83187-00 - Solution Tank 	

FLOOR STRIPPERS

Crewman™ 20 ORB 20" Orbital Strip Machine

Up to 7,000 sq. ft./hr. on Wood Floors
Up to 2,700 sq. ft./hr. on VCT Floors



Safely and effectively strip and prep any floor surface.

- High speed 3,400 RPM orbital motor quickly cuts through the toughest coatings without the use of harsh chemicals
- Cast iron base and optional weight system provide maximum durability
- Optional dust containment system easily connects to any dry vacuum

Length: 22"
Width: 16"
Height: 46"

Item #	Description
E12801-00	Crewman™ 20 ORB - 20" Standard Machine
E12806-00	Crewman™ 20 ORB - 20" Machine w/ weights
Optional Accessories	
<ul style="list-style-type: none"> • EP50249 - 20" Dust Containment Kit • EP50251 - Crewman™ Orbital Solution Tank 	

Crewman™ 28 ORB 28" Orbital Strip Machine

Up to 10,000 sq. ft./hr. on Wood Floors
Up to 3,600 sq. ft./hr. on VCT Floors



Safely and effectively strip and prep any floor surface.

- High speed 3,400 RPM orbital motor quickly cuts through the toughest coatings without the use of harsh chemicals
- Cast iron base and optional weight system provide maximum durability
- Optional dust containment system easily connects to any dry vacuum

Length: 30"
Width: 16"
Height: 46"

Item #	Description
E12811-00	Crewman™ 28 ORB - 28" Machine w/ weights
Optional Accessories	
<ul style="list-style-type: none"> • EP50250 - 28" Dust Containment Kit • EP50251 - Crewman™ Orbital Solution Tank 	

Big Bertha® 30" Stripping Machine

Up to 30,000 sq. ft. / hr.



Most productive machine for stripping large areas and excessive finish build up.

- Triple counter-rotating brushes easily remove multiple layers of floor finish in a single pass
- Rugged powder coated steel construction for heavy use in tough environments
- Floating shroud contains stripper/prevents splashing
- Best performance due to top end down pressure combined with highest brush RPM in the industry

Length: 57"
Width: 33"
Height: 43.5"

Item #	Description
E12327-00	Big Bertha® - 30" - Stripping Machine

Lil Bertha® 24" Stripping Machine

Up to 24,000 sq. ft. / hr.



Most productive machine for stripping large areas and excessive finish build up.

- Triple counter-rotating brushes easily remove multiple layers of floor finish in a single pass
- Rugged powder coated steel construction for heavy use in tough environments
- Floating shroud contains stripper/prevents splashing
- Best performance due to top end down pressure combined with highest brush RPM in the industry

Length: 54"
Width: 27"
Height: 43.5"

Item #	Description
E88398-00	Lil Bertha® - 24" Stripping Machine

WET / DRY VACUUMS

Workman® 20 Wet / Dry Vacuum

Up to 8,000 sq. ft. / hr.

Item #	Description
E83012-00	Workman® 20 - Wet / Dry Vacuum



Innovative "tip and pour" design makes emptying easy, large 20 gallon capacity.

- Powerful 1.75 hp motor offers maximum recovery in wet and dry applications
- Multi task tool kit included, optional front mount squeegee available
- Use for all types of wet or dry vacuuming on hard floor and carpet

Width: 20.5" w/o squeegee
Width: 29" w/ squeegee
Height: 39.75"

Optional Accessories

- E83011-00 - Front Mount Squeegee
- E83594-00 - HEPA Filter

CARPET MACHINES

FiberPRO® 8 Self Contained Carpet Extractor

Up to 2,000 sq. ft. / hr.

Item #	Description
E87304-00	FiberPRO® 8 - Self Contained Carpet Extractor



Deep cleans all types of carpets in a single pass maximizing productivity.

- Preferred method of cleaning, uses less chemical and allows carpets to dry in less than 24 hours
- Unique roller support bar evenly balances machine helping reduce operator fatigue
- CRI Gold Seal of Approval demonstrates powerful, certified performance

Length: 41"
Width: 17.5"
Height: 34"

FiberPRO® 20 Self Contained Carpet Extractor

Up to 8,000 sq. ft. / hr.

Item #	Description
E87303-00	FiberPRO® 20 - Self Contained Carpet Extractor



Deep cleans all types of carpets in a single pass maximizing productivity.

- Self propelled, variable speed; multiple brush settings
- Floating vacuum shoe provides high water recovery reducing dry times
- Large 20 gallon capacity for cleaning large areas
- CRI Gold Seal of Approval demonstrates powerful, certified performance

Length: 49"
Width: 22"
Height: 41"

Optional Accessories

- E85516-00 - 20' Vac & Solution Hose Assembly
- E85519-00 - Stainless Steel Carpet Wand
- E85523-00 - 3" Hand Tool

FiberPRO® Carpet Spotter Carpet Spotter

Item #	Description
E88049-00	FiberPRO® Carpet Spotter



Effectively removes spots and soils from carpeting and upholstery.

- Retractable handle and wide wheel base make transport easy
- Optional floor wand available for cleaning stairs and larger areas

Length: 21"
Width: 13"
Height: 23"

Optional Accessories

- E85524-00 - Stainless Steel Carpet Wand

FiberPRO® Air Mover Floor Dryer

Item #	Description
E89968-00	FiberPRO® Air Mover - Floor Dryer



Powerful 1500 RPM airflow accelerates dry times.

- Rugged roto-mold construction, 3 speed settings
- Stackable design for increased airflow and easy storage
- Extend reach and increase air flow with daisy-chain multi-unit capability
- Three operating positions: 0°, 45° and 90°

Length: 15"
Width: 15"
Height: 15"



Products	Page
AC114 Multi-Purpose Acid Cleaner • Delimer	22
ADVANTAGE SYSTEMS Peristaltic Laundry Dispensing Systems	44
AF315 Disinfectant • Deodorant • Cleaner	27
AF79 Disinfectant, Cleaner, Fungicide, Mildewstat, Virucide, Deodorizer	25
AF79 CONCENTRATE Acid Free Cleaner • Disinfectant Fungicidal • Virucidal	25
ALCOHOL FREE FOAMING HAND SANITIZER Freshly Scented, Foaming	52
ALCOHOL FOAMING HAND SANITIZER Ethanol Based Foaming	52
ALCOHOL GEL SANITIZER Ethanol Based	53
ANTIBACTERIAL LOTION SKIN CLEANSER Pearlized Cleanser with PCMX	52
APPLICATOR REFILL PADS 18" or 24"	16
AX-IT® AEROSOL Baseboard Cleaner and Stripper	7
AX-IT® PLUS Very Aggressive No-Rinse Floor Stripper	7
BARRIER FLUID Oil-based Malodor Blocking Liquid	26
BEST BET™ Liquid Creme Cleanser	25
BEST SCENT Air Fresheners	29
BEST SCRUB Top Scrub Floor Cleaner	9
BETCO EXPRESS® with SRT Fast Drying - Fast Curing Floor Finish	6
BETCOBEST® LM HIGH BUILD FLOOR FINISH with MMT/50° Technology	6
BETCO® BRITE MSP Multi-Surface Polish • Protectant	20
BETCO® ONE STEP High Speed Cleaner • Restorer	8
BOL MAID® Porcelain Toilet Bowl Cleaner	24
BTB Mildew Stain Remover • Bathroom Cleaner	25
CIDE-BET II Antibacterial, Bactericidal, Virucidal, Fungicidal	28
CITRUFOAM All Purpose Cleaner • Degreaser	18
CITRUS CHISEL Natural Citrus Cleaner Degreaser	21, 32
CITRUS KITCHEN DEGREASER Citrus Cleaner Degreaser	35
CITRUSOLV™ 40 Heavy-Duty Solvent Degreaser	23
CITRUSOLV™ CONCENTRATE Natural Degreaser • Deodorant	23
CITRUSOLV™ HF High Flash Solvent Degreaser	23
CITRUSOLV™ WR Water Rinsable Degreaser	23
CITRUSPRAY™ Foaming Degreaser	21
CLARIO® C3 MANUAL DISPENSERS Foaming and Lotion	54
CLARIO® C3 TOUCH FREE DISPENSERS Foaming and Lotion	54
CLARIO® TOUCH FREE BLACK FLOOR STAND For use with Touch Free Dispensers	54
CLEAR IMAGE Glass and Surface Cleaner	19
CLEAR IMAGE AEROSOL Glass and Surface Cleaner	19
CLEAR IMAGE CONCENTRATE Glass and Surface Cleaner	19
CRETE RX™ CLEANING & BURNISHING PADS For Use with CreteRx	11
CRETE RX™ CONCRETE STAIN REMOVAL KIT For Use with CreteRx	11
CRETE RX™ DENSICLEAN™ Polished Concrete Cleaner	9
CRETE RX™ DENSIFIER CreteRx RTU Densifying Compound	11
CRETE RX™ HONING TOOL For Use with CreteRx	12
CRETE RX™ LIQUIGRIND Ready To Use Honing Compound	10
CRETE RX™ LIQUISHIELD Concrete Guard	10
CRETE RX™ LIQUISTRIP Concentrated Stripper for Permanent Coatings	10
CRETE RX™ POLISHING TOOL For Use with CreteRx	12
CRETE RX™ RESET TOOL For Use with CreteRx	12
CRETE RX™ STAIN DEFENSE CreteRx Ready to Use Penetrating Sealer	11
COUNTER ROTATING PLATE (CRP) For Use with CreteRx	12
CTW501 Car and Truck Wash	22
DAILY DISINFECTANT DUAL Disinfectant/Detergent/Deodorant	27

Products	Page
DAILY SCRUB SC Floor Cleaner	8
DEEP BLUE Glass and Surface Cleaner	19
DEEP BLUE AEROSOL Glass and Surface Cleaner	20
DEEP BLUE CONCENTRATE Glass and Surface Cleaner	19
DEEP BLUE CONCENTRATE 120 Glass and Surface Cleaner	20
DM120 Dust Mop Treatment	16
DRAIN STATION Drain Maintenance Pump	38
DRAIN & TRAP TREATMENT Cleaner and Maintainer	36
DRAIN TREATMENT NEEM Drain Treatment for Beverage Machines	36
DRIP TRAY For use with Clario Dispensers	54
DUMPSTER SPRAY SYSTEM Automatic Dumpster Spray System	38
DUMPSTER TREATMENT Dumpster Cleaner and Odor Eliminator	36
DUST MOP TREATMENT AEROSOL Water-Based Dust Mop Treatment	16
E2 ANTIBACTERIAL FOAMING SKIN CLEANSER For Food Service Applications	51
EASY TASK™ Thermoplastic Spray Buff	8
EMULSINATOR Aggressive No-Rinse Stripper	7
EMULSION PRO+ Oil and Water Wood Floor Finish and Sealer	15
EXTREME® Low Odor No-Rinse Floor Stripper	7
EXTREME® ULTRA Ultra Concentrated Low Odor Floor Stripper	7
FACTORY FORMULA™ HP Cleaner • Degreaser Concentrate	21
FASTDOSE™ Chemical Management	46
FASTDRAW® 1 Chemical Management	46
FASTDRAW® FOAMER II Chemical Management	46
FASTDRAW® FREEDOM Chemical Management	46
FASTDRAW® FREEDOM HOSE KIT Chemical Management	46
FASTDRAW® PRO Chemical Management	46
FASTDRAW® RACK Chemical Management	46
FIBERCAP™ MP Multi-Purpose Encapsulation Cleaner	13
FIBERPRO® BONBET™ Bonnet Shampoo	13
FIBERPRO® EXTRACTION CLEANER 5th Generation Extraction Cleaner	13
FIBERPRO® FOAM CONTROL Liquid Defoamer	14
FIBERPRO® GUM REMOVER Gum Remover	14
FIBERPRO® RED 'N' BROWN OUT Red Stain • Tannin Debrowner Treatment	14
FIBERPRO® SPOT BET All Purpose Spot and Stain Remover	14
FIBERPRO® TLC Traffic Lane Cleaner	13
FIGHT-BAC™ RTU Disinfectant • Deodorizer • Cleaner	28
FINISH 101™ Acrylic Polymer Floor Finish	6
FLAT TOP GALLON DISPENSER PUMP & WALL BRACKET For Flat Top Gallon Dispensers	55
FLATWARE PRESOAK Concentrated Liquid Presoak & Brightener	34
FLOOR SEALER Metal Interlocked Acrylic Polymer Floor Sealer	8
FOAM GUN Foam Gun for Dumpster Treatment	38
FOAMING ANTIBACTERIAL SKIN CLEANSER Vitamin E Enriched	51
FOAMING HAND, HAIR AND BODY SHAMPOO Vitamin E Enriched	53
FOREST 5 Foaming RTU Cleaner • Disinfectant	25
FORTIFY™ FOAM CONTROL Concentrated Solid Antifoam Puck	9
GALLON BOTTLE PUMPS Gel and Foam Options	55
GAME TIME CLEANER Maintenance Cleaner for Wood Floors	15
GE FIGHT-BAC™ RTU Disinfectant • Cleaner • Virucide • Fungicide	28
GERALDINE® Nonammoniated Finish Wax and Finish Stripper	7
GLARE® Metal Interlocked Acrylic Polymer Floor Finish	6
GLYBET™ III Disinfectant • Deodorant	28
GRAFFITI REMOVER Gel Formula	20

Products	Page
GREASE SOLV Probiotic Degreaser	22
GREEN EARTH® II 1 Button Dispenser	47
GREEN EARTH® CLEAR FOAMING SKIN CLEANSER Dye Free and Fragrance Free	51
GREEN EARTH® DAILY FLOOR CLEANER Neutral pH Low Foaming	10
GREEN EARTH® FLOOR FINISH Non-Zinc Floor Finish and Sealer	10
GREEN EARTH® FLOOR STRIPPER Non-Butyl • Non-Ammoniated	10
GREEN EARTH® FOAMING SKIN CLEANSER Luxurious with Emollients	51
GREEN EARTH® GLASS CLEANER Streak Free Glass and Surface	19
GREEN EARTH® LOTION SKIN CLEANSER Moisturizing Lotion	52
GREEN EARTH® NATURAL ALL PURPOSE CLEANER Hard Surface Cleaner	19
GREEN EARTH® NATURAL DEGREASER Hard Surface Degreaser	21
GREEN EARTH® PEROXIDE CLEANER Concentrated All Purpose Cleaner	18
GREEN EARTH® RESTROOM CLEANER Concentrated • Non Corrosive • Heavy Duty	25
GREEN EARTH® RTU PEROXIDE CLEANER Ready-To-Use • Multi-Purpose	18
GREEN EARTH® RTU RESTROOM CLEANER Ready-To-Use • Non-Corrosive • Heavy Duty	24
GREEN EARTH® VELOCITY® Non-Butyl Degreaser	21
GYMSHOE® Two Component Waterbased Sport Floor Finish	15
HARD AS NAILS® Black Mark Resistant Metal Interlocked Finish	5
HEAVY WEIGHT BAR 18" / 24"	16
HD HIGH FOAM CHLORINATED DEGREASER High Foaming Degreaser	35
HD LOW FOAM CIP CHLORINATED DEGREASER Low Foaming Degreaser	35
HD ORANGE HAND CLEANER Heavy Duty with Citrus and Fine Pumice	53
HIGH FLOW PROPORTIONER Industrial Proportioner for Auto Scrubbers	23
HI-TECH® Metal Interlocked Floor Finish	6
HYBRID® Optically Energized Extended Wear Floor Finish	6
I.F.T. Intensive Floor Treatment	16
KITCHEN DEGREASER Cleaner and Degreaser	35
KLING™ Thickened Acid Toilet Bowl and Urinal Cleaner	24
LEMON FURNITURE POLISH Natural Lemon Oil	20
LIQUID CHISEL™ MAX Ultra Strength Non-Butyl Degreaser	22
LOTION HAND, HAIR AND BODY SHAMPOO Pleasantly Scented	53
LS 100 LAUNDRY CONTROLLER Multi-Washer Laundry Dispensing System	44
MAD Mild Acid Detergent	36
NEVER B4 Vehicle Cleaner • Pressure Washer Cleaner	22
NO-RINSE FLOOR CLEANER Continuous Floor Treatment	36
OVEN/FRYER/GRILL CLEANER Ready To Use	35
OVEN AND GRILL CLEANER AEROSOL Gel Formulation • Fast Acting Lemon Fragrance	34
OVEN JELL Oven • Grill and Rangehood Cleaner	34
PEARLIZED WHITE LOTION SKIN CLEANSER Cleanser with Emollients	52
PINE QUAT Disinfectant, Deodorant, Detergent	28
PINK FOAMING SKIN CLEANSER Luxury Foaming	51
PINK LOTION SKIN CLEANSER Pearlized with Emollients	52
pH7 Daily Floor Cleaner	10
pH7 DUAL Neutral pH Disinfectant, Detergent, Deodorant	27
pH7 ULTRA Daily Floor Cleaner	10
pH7Q Neutral pH Disinfectant, Detergent, Deodorant	27
pHERFECT Ice Melt Remover Floor Conditioner	9
PHOTON™ MAX High Gloss Remarkable Response Floor Finish	5
PLAYER'S CHOICE™ ONE Clear Waterbased Sport Floor Finish	15
PRODUCT SELECTION GUIDE Chemical Management	48 - 49
PULL® Toilet Bowl • Urinal Cleaner	24
PUSH® Drain Maintainer • Floor Cleaner • Spotter	18

Products	Page
QUARTERPACK Chemical Management	47
QUAT-STAT™ 5 One-Step Disinfectant • Cleaner	27
RECOVER LVT / Multi-Surface Stripper	9
REINFORCE Daily Cleaner and Protectant	9
REST STOP™ Virucidal, RTU Germicide, Cleaner, Disinfectant	25
RESCUE GLOSS LVT / Multi-Surface Floor Finish	9
RESCUE TRUMATTE LVT / Multi-Surface Floor Finish	9
SANIBET™ RTU Cleaner • Sanitizer • Deodorizer	34
SENTEC® Odor Eliminator Technology	29
SOLICHEM™ GREASE SOLV Solid Industrial Degreaser	22
SOLICHEM™ pH7 Ultra Solid Neutral Floor Cleaner	8
SPECTACULOSO Lavender Multi-Purpose Cleaner	18
SPEEDEX CONCENTRATE Cleaner • Degreaser	21
SPEEDEX Ready-To-Use Cleaner • Degreaser	21
SPRAY AND FOAM DISPENSER Meat Room Dispenser	35
SPRAY FOAM Heavy Duty Foaming Degreaser	35
SPRAY FOAM ULTRA Heavy Duty Foaming Degreaser	33
SQUEAKY™ FLOOR CLEANER Maintenance Cleaner for Wood Floors	15
STAINLESS STEEL CLEANER • POLISH AEROSOL Streak Free • Ready-To-Use	20
STG CLEANER Daily Cleaner and Protectant	13
STG PENETRATING SEALER Stone, Tile, and Grout	13
STIX™ Toilet Bowl • Porcelain Cleaner	24
STREETSHOE® NXT Waterbased High Traffic Wood Floor Finish	15
SUPER KEMITE® Heavy Duty Cleaner • Degreaser	22
SURE BET™ II Foaming Shower Restroom Cleaner	24
SURE CURE™ Acrylic/Urethane Sealer	7
SYMPPLICITY™ ALL TEMP MACHINE DETERGENT Concentrated All Temperature	31
SYMPPLICITY™ ALL TEMP RINSE AID Concentrated Liquid Rinse Aid	32
SYMPPLICITY™ BETCO® BAR GLASS DETERGENT Low Foam	33
SYMPPLICITY™ BLAZE MACHINE DETERGENT Machine Detergent Concentrate	31
SYMPPLICITY™ BLAZE NP MACHINE DETERGENT Non Phosphate Machine Detergent	31
SYMPPLICITY™ BREAK Alkaline Builder	40
SYMPPLICITY™ BREAK ULTRA Super Concentrated Laundry Break	40
SYMPPLICITY™ BUILT DETERGENT Ultra High Performance	40
SYMPPLICITY™ CHLORINATED MACHINE DETERGENT Stain Fighting Detergent	31
SYMPPLICITY™ CITRUSUDS Dish & Pan Detergent	33
SYMPPLICITY™ COLOR SAFE DESTAINER Color Safe Destainer	41
SYMPPLICITY™ DESTAINER Laundry Bleach	41
SYMPPLICITY™ DETERGENT High Performance Detergent	40
SYMPPLICITY™ DETERGENT ULTRA Super-Concentrated Laundry Detergent	40
SYMPPLICITY™ DUET-OPL Detergent with Enzymes	41
SYMPPLICITY™ DUET-L Liquid Detergent with Bleach Alternative	41
SYMPPLICITY™ DUET-S Detergent with Color Safe Bleach	41
SYMPPLICITY™ DYE FREE FRAGRANCE FREE DETERGENT High Performance Detergent	41
SYMPPLICITY™ EMULSIFIER Emulsifying Detergent	40
SYMPPLICITY™ FRESH SUDS Super-Concentrated Laundry Detergent	33
SYMPPLICITY™ GREEN EARTH MACHINE DETERGENT Machine Detergent Concentrate	31
SYMPPLICITY™ GREEN EARTH POT & PAN DETERGENT Premium 100% Active Detergent	35
SYMPPLICITY™ KRYSTAL SOLID RINSE AID Solid Machine Rinse Aid	32
SYMPPLICITY™ IN-SYNC Premium Pot & Pan Detergent	33
SYMPPLICITY™ LOW TEMP MACHINE SANITIZER Machine Sanitizer	32
SYMPPLICITY™ L-S-R DELIMER Dish Machine Descaler	33

Products	Page
SYMPPLICITY™ MACHINE RINSE AID Dish Machine Rinse Aid	32
SYMPPLICITY™ METAL SAFE DETERGENT Concentrated All Temp Machine	31
SYMPPLICITY™ OXY DESTAINER POWDER Oxygen Stain Remover	34
SYMPPLICITY™ PINNACLE PRESOAK Solid Pre-Soak & Detarner	34
SYMPPLICITY™ PRO A for Organic Stains	43
SYMPPLICITY™ PRO G for Healthcare Related Stains	43
SYMPPLICITY™ PRO R for Rust and Metallic Stains	43
SYMPPLICITY™ PRO S for Inorganic Stains	43
SYMPPLICITY™ RECLAIM C for Colored Linens	43
SYMPPLICITY™ RECLAIM R for Rust	43
SYMPPLICITY™ RECLAIM W for White Linens	43
SYMPPLICITY™ SANIBET™ MULTI-RANGE Sanitizer • Disinfectant • Deodorizer	34
SYMPPLICITY™ SANITIZING SOFTENER 550 Softener Sanitizer	42
SYMPPLICITY™ SOFTENER Fabric Softener	42
SYMPPLICITY™ SOUR Laundry Neutralizer	42
SYMPPLICITY™ SOUR & SOFTENER Neutralizer and Fabric Softener	42
SYMPPLICITY™ SOUR ULTRA Super-Concentrated Laundry Sour	42
SYMPPLICITY™ TDS RINSE AID Concentrated Liquid Rinse Aid	32
SYMPPLICITY™ TILLY Hand Dishwashing Detergent	31
TOOL ADAPTOR PAD (TAP) For Use with CreteRx	33
TOP FLITE™ All Purpose Cleaner Concentrate	18
TOP FLITE™ PLUS All Purpose Cleaner	18
TOTE/TANK/DRUM PROPORTIONER	23
TRIFORCE Disinfectant • Bactericidal • Fungicidal	27
TRITON® HD 2 L DISPENSER Dispenser for 2 Liter Triton Bottles	53
TRITON® HD 4 L DISPENSER Dispenser for 4 Liter Triton Bottles	53
TYKOTE Wood Floor Bonding Agent	16
ULTRABLU™ Antibacterial Foaming Skin Cleanser	26
ULTRA 2000™ Super Double Strength Degreaser	22
UNLOCK™ No-Rinse Floor Stripper	7
UNTOUCHABLE™ with SRT Black Mark Resistant Metal Interlocked Finish	5
URINAL PUCK BLUE DSL Probiotic Urinal Puck	26
VERSIFECT™ Disinfectant, Virucide, Cleaner and Deodorizer	27
WASH BASIC L Peristaltic 1 Product Dispenser	44
XHD HAND CLEANER Extra Heavy Duty with Soy and Walnut	53

Automatic Scrubbers	Page
CREWMAN™ AS20B 20" Automatic Scrubber w/ Brush Assist	55
GENESYS™ 20D 20" Automatic Scrubber w/ Pad Assist	54
GENESYS™ 20DT 20" Automatic Scrubber w/ Transaxle Drive	54
GENESYS™ 20ORB 20" Orbital w/ Traction Drive	54
GENESYS™ 26D 26" Disk Auto Scrubber	55
GENESYS™ 28D 28" Disk Auto Scrubber	55
GENESYS™ 32D 32" Disk Auto Scrubber	55
GENESYS™ 28ORB 28" Orbitol Scrubber	55
STEALTH™ DR521BT MicroRiding Scrubber	56
STEALTH™ DR526BT Automatic Rider Scrubber	56
STEALTH™ DR532BT Automatic Rider Scrubber	56

Burnishers	Page
CREWMAN™ 1600 20" High Speed Burnisher	59
CREWMAN™ 2000 20" High Speed Burnisher	59
OPTIMA XR SERIES High Speed Burnishers	59

Carpet Machines	Page
FIBERPRO® 8 Self Contained Carpet Extractor	61
FIBERPRO® 20 Self Contained Carpet Extractor	61
FIBERPRO® CARPET SPOTTER Carpet Spotter	61
FIBERPRO® AIR MOVER Floor Dryer	61

Floor Machines	Page
CREWMAN™ 17HD Standard Floor Machine	60
CREWMAN™ 20HD Standard Floor Machine	60
FOREMAN® 20DS Dual Speed Floor Machine	60

Floor Strippers	Page
BIG BERTHA® 30" Stripping Machine	60
CREWMAN™ 20 ORB 20" Orbital Strip Machine	60
CREWMAN™ 28 ORB 28" Orbital Strip Machine	60
LIL BERTHA® 24" Stripping Machine	60

Small Area Autoscrubbers	Page
GENIE® B All Purpose Automatic Scrubber	57

Wet/Dry Vacuums	Page
WORKMAN® 20 Wet / Dry Vacuum	67

Contents

<i>Floor Care</i>	4 - 16
<i>General Cleaning</i>	17 - 29
<i>Food Service / Warewash</i>	30 - 38
<i>Laundry</i>	39 - 44
<i>Dilution Control</i>	45 - 49
<i>Hand Hygiene</i>	50 - 55
<i>Equipment</i>	56 - 61
<i>Product Index</i>	62 - 63





888-GO BETCO | betco.com

©2025 Betco Corporation
All Rights Reserved.
400 Van Camp Road
Bowling Green, Ohio 43402

Item #90211-92



07/2025