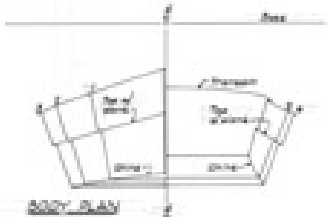
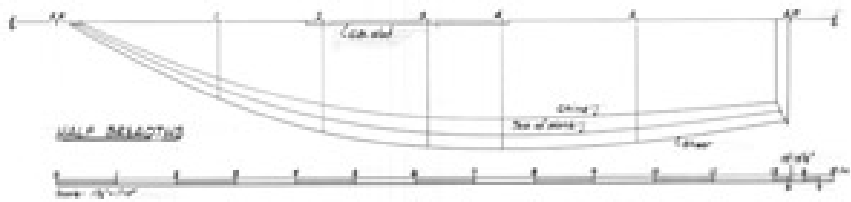


250214



BODY PLAN



HALF SECTION

TABLE of DIMENSIONS							
SECTION	LENGTH	1	2	3	4	5	6
1-1	100.0	10.0	10.0	10.0	10.0	10.0	10.0
2-2	100.0	10.0	10.0	10.0	10.0	10.0	10.0
3-3	100.0	10.0	10.0	10.0	10.0	10.0	10.0
4-4	100.0	10.0	10.0	10.0	10.0	10.0	10.0
5-5	100.0	10.0	10.0	10.0	10.0	10.0	10.0
6-6	100.0	10.0	10.0	10.0	10.0	10.0	10.0

Dimensions given in feet unless otherwise indicated.

When necessary to show structure, sections and elevations that do not appear on these plans, reference should be made to the 'General Arrangement'.

The above are shown subject to change and as shown on the hull, the above shown are approximate only and should not be used for construction. The above shown are shown as shown on the hull, the above shown are shown as shown on the hull, the above shown are shown as shown on the hull.

The above shown are shown as shown on the hull, the above shown are shown as shown on the hull, the above shown are shown as shown on the hull.

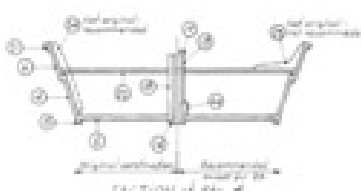
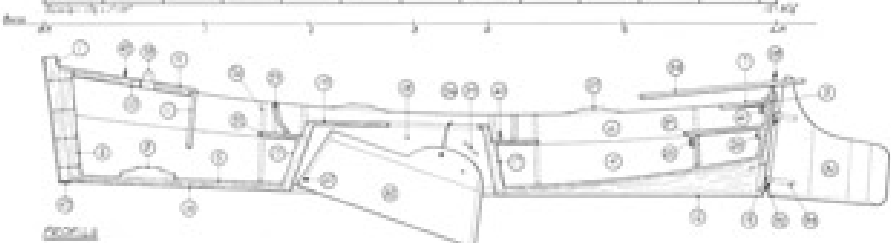
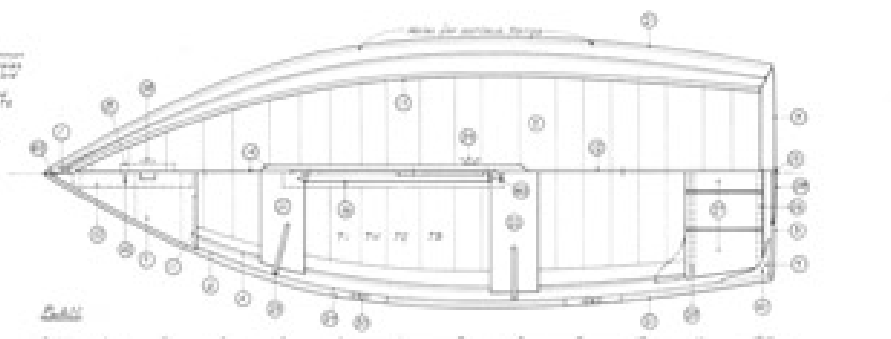
The construction of these plans are shown on the 'General Arrangement'.

Wiggins' is a standard drawing of the hull of a ship, showing the hull, the deck, the keel, the stowage, and the condition of the ship.

CONSTRUCTION:

- 1. Hull - 1/2" ply with 2 1/2" mahogany
- 2. Deck - 1/2" mahogany
- 3. Cabin top - 1/2" mahogany
- 4. Cabin sides - 1/2" mahogany
- 5. Cabin bottom - 1/2" mahogany
- 6. Cabin floor - 1/2" mahogany
- 7. Cabin bulkheads - 1/2" mahogany
- 8. Cabin door - 1/2" mahogany
- 9. Cabin window - 1/2" mahogany
- 10. Cabin hatch - 1/2" mahogany
- 11. Cabin ventilator - 1/2" mahogany
- 12. Cabin seat - 1/2" mahogany
- 13. Cabin table - 1/2" mahogany
- 14. Cabin chairs - 1/2" mahogany
- 15. Cabin storage - 1/2" mahogany
- 16. Cabin lockers - 1/2" mahogany
- 17. Cabin drawers - 1/2" mahogany
- 18. Cabin cabinets - 1/2" mahogany
- 19. Cabin shelves - 1/2" mahogany
- 20. Cabin trim - 1/2" mahogany
- 21. Cabin hardware - 1/2" mahogany
- 22. Cabin paint - 1/2" mahogany
- 23. Cabin varnish - 1/2" mahogany
- 24. Cabin finish - 1/2" mahogany
- 25. Cabin maintenance - 1/2" mahogany
- 26. Cabin safety - 1/2" mahogany
- 27. Cabin security - 1/2" mahogany
- 28. Cabin reliability - 1/2" mahogany
- 29. Cabin durability - 1/2" mahogany
- 30. Cabin performance - 1/2" mahogany

- 31. Cabin efficiency - 1/2" mahogany
- 32. Cabin economy - 1/2" mahogany
- 33. Cabin convenience - 1/2" mahogany
- 34. Cabin comfort - 1/2" mahogany
- 35. Cabin health - 1/2" mahogany
- 36. Cabin safety - 1/2" mahogany
- 37. Cabin security - 1/2" mahogany
- 38. Cabin reliability - 1/2" mahogany
- 39. Cabin durability - 1/2" mahogany
- 40. Cabin performance - 1/2" mahogany
- 41. Cabin efficiency - 1/2" mahogany
- 42. Cabin economy - 1/2" mahogany
- 43. Cabin convenience - 1/2" mahogany
- 44. Cabin comfort - 1/2" mahogany
- 45. Cabin health - 1/2" mahogany



SECTION of the H.

- 46. Cabin materials - 1/2" mahogany
- 47. Cabin finishes - 1/2" mahogany
- 48. Cabin hardware - 1/2" mahogany
- 49. Cabin maintenance - 1/2" mahogany
- 50. Cabin safety - 1/2" mahogany
- 51. Cabin security - 1/2" mahogany
- 52. Cabin reliability - 1/2" mahogany
- 53. Cabin durability - 1/2" mahogany
- 54. Cabin performance - 1/2" mahogany
- 55. Cabin efficiency - 1/2" mahogany
- 56. Cabin economy - 1/2" mahogany
- 57. Cabin convenience - 1/2" mahogany
- 58. Cabin comfort - 1/2" mahogany
- 59. Cabin health - 1/2" mahogany
- 60. Cabin safety - 1/2" mahogany

ASSEMBLY:

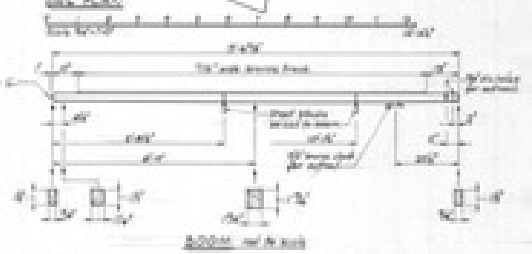
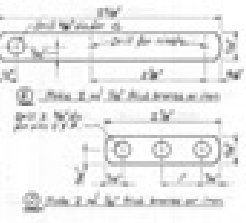
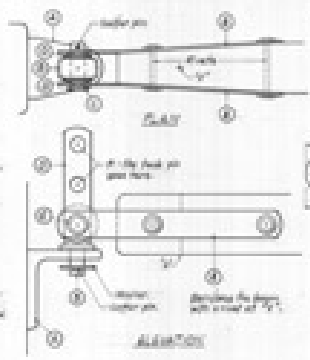
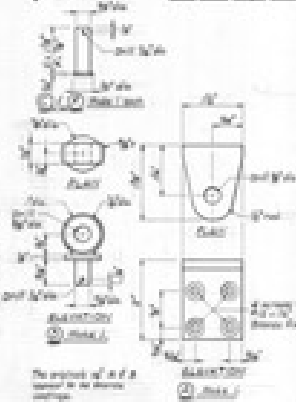
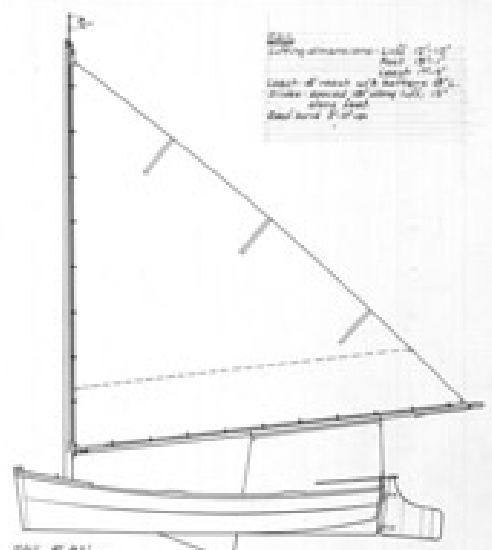
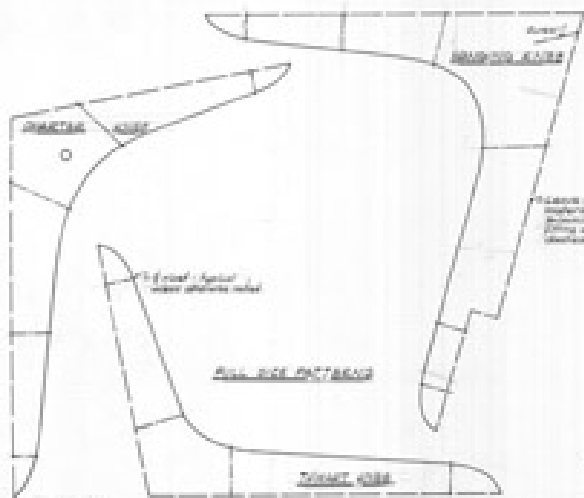
- 61. Cabin installation - 1/2" mahogany
- 62. Cabin fitting - 1/2" mahogany
- 63. Cabin alignment - 1/2" mahogany
- 64. Cabin leveling - 1/2" mahogany
- 65. Cabin caulking - 1/2" mahogany
- 66. Cabin sealing - 1/2" mahogany
- 67. Cabin finishing - 1/2" mahogany
- 68. Cabin painting - 1/2" mahogany
- 69. Cabin varnishing - 1/2" mahogany
- 70. Cabin inspection - 1/2" mahogany
- 71. Cabin testing - 1/2" mahogany
- 72. Cabin operation - 1/2" mahogany
- 73. Cabin maintenance - 1/2" mahogany
- 74. Cabin safety - 1/2" mahogany
- 75. Cabin security - 1/2" mahogany
- 76. Cabin reliability - 1/2" mahogany
- 77. Cabin durability - 1/2" mahogany
- 78. Cabin performance - 1/2" mahogany
- 79. Cabin efficiency - 1/2" mahogany
- 80. Cabin economy - 1/2" mahogany



SECTION OF THE H.

The hull structure may also be made of 3/4" mahogany and 1 1/2" mahogany.

The hull construction "Wally" is based on the construction plan drawn by the author.



1/2 inch diameter brass fasteners used
 Hull built by the author
 Sail built by the author

NOTES:
 1. Hull and deck made of solid spruce.
 2. Mast and boom made of 1/2 inch spruce and 1/2 inch oak.
 3. Rudder made from oak 1/2 inch thick.
 4. Deck plates made of 1/2 inch oak.
 5. Hull built by the author and the deck by the author.

"Hobby" is a pocket boat
 1/2 inch x 1/2 inch
 This plan shows details
 from the author's book "Hobby"
 1928 New York

ACCESSORY DETAILS