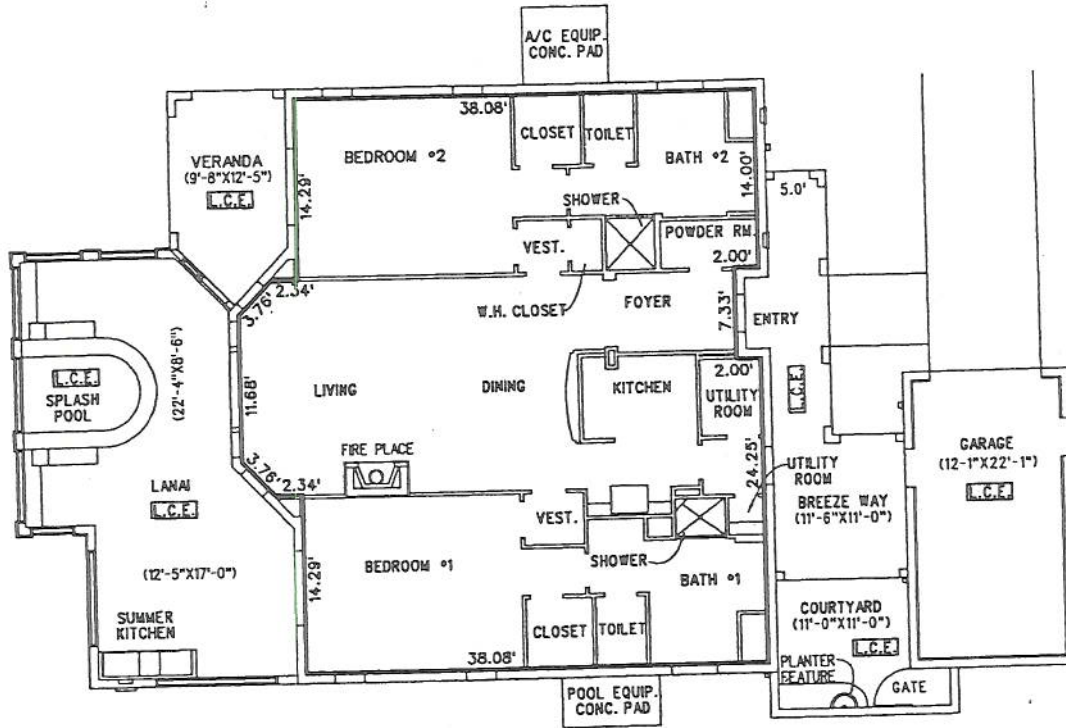


EXHIBIT "A"
 THE EAGLE TREE CONDOMINIUM
 SECTION 19, TOWNSHIP 41 SOUTH, RANGE 43 EAST
 TOWN OF JUPITER, PALM BEACH COUNTY, FLORIDA
 PHASE 2



UNIT BOUNDARY
 TYPICAL FOR UNITS 637, 645, 651 & 657

NOTES:

1. L.C.E. DENOTES LIMITED COMMON ELEMENT.
2. THIS IS NOT A SURVEY.
3. ALL INTERIOR MEASUREMENTS ARE INDICATED FROM THE FACE OF THE FINISH WALL.
4. COMMON ELEMENTS, SUCH AS, BUT NOT LIMITED TO, CONDUITS, WIRES, UTILITY LINES, DUCTS, LIGHTING, ETC., HAVE NOT BEEN GRAPHICALLY SHOWN.



1 STORY 2 BEDROOM UNIT

LIDBERG LAND SURVEYING, INC.

LB4431

675 West Indiantown Road, Suite 200,
 Jupiter, Florida 33458 TEL. 561-746-8454

CAD. K:\UST \ 194143 \ RITZ \ 1321305 \ 08-09_2B.DGN

REF.

FLD.	B.D.	FB.	PG.	JOB	01-132-305
OFF.	R.W.	396	54	DATE	04/24/03
CKD.	D.C.L.	SHEET	8 OF 11	DWG.	A01-132