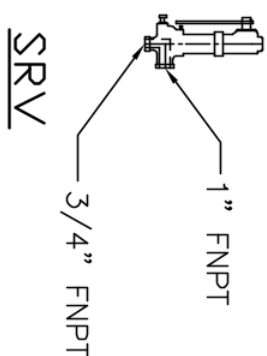
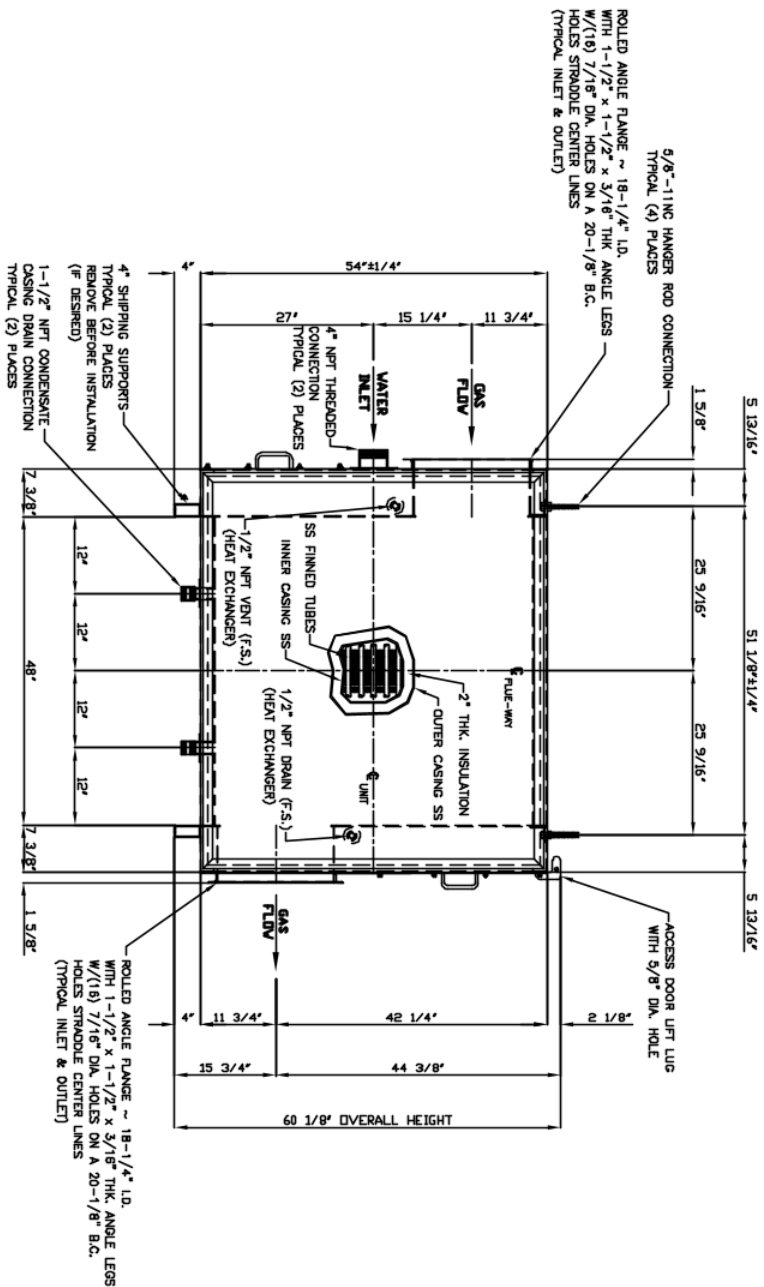


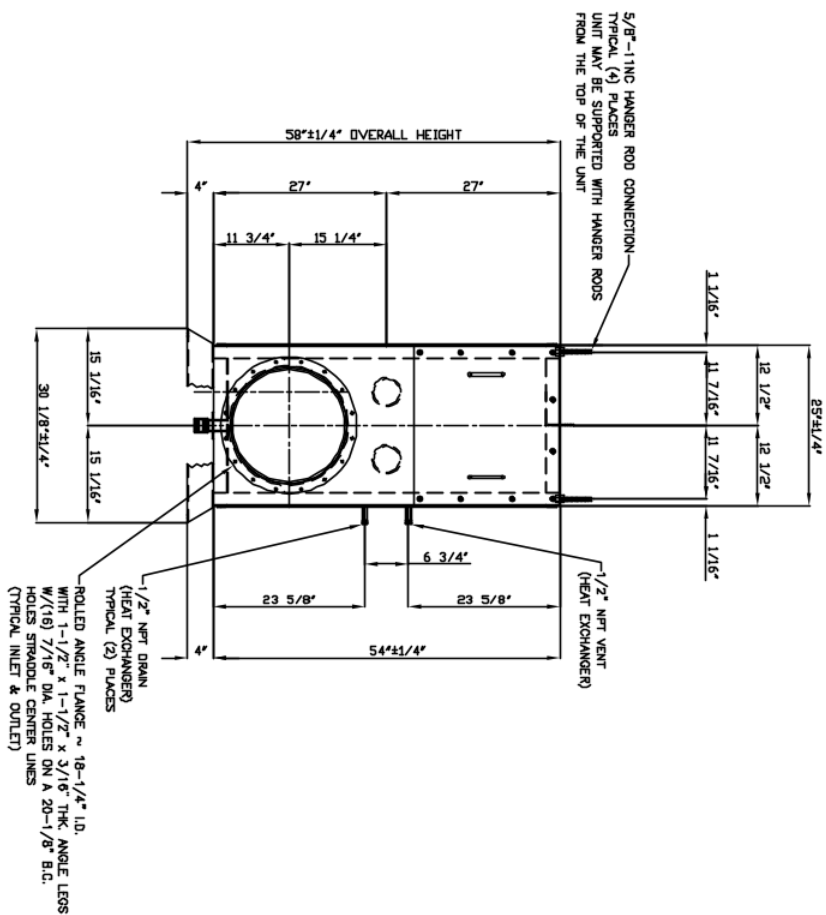
PLAN VIEW



KUNKLE SAFETY RELIEF VALVE
SET PRESSURE 160 PSI
MAX CAPACITY 4,215 PPH
MODEL 0537-D01-HM-0160
FIELD INSTALL IN OUTLET PIPING



ELEVATION VIEW



SIDE VIEW

PERFORMANCE BASIS OF DESIGN

| |
|---|
| WATER FLOW: 350 GPM - 175,000 PPH |
| WATER TEMP IN: 110°F OUT: 111.8°F PRESSURE DROP: 1 PSI |
| GAS FLOW: 2,972 PPH |
| GAS TEMP IN: 425°F OUT: 159°F PRESSURE DROP: .061 in WC |
| RECOVERY: 327,775 BTU/HOUR |

- 1.) PRESSURE DROP CALCULATION IS ACROSS BUNDLE ONLY. BEI NOT RESPONSIBLE FOR DROP ACROSS CUSTOMER DEFINED FLUE GAS OPENING SIZES.
- 2.) UNIT FOR OUTDOOR INSTALLATION.
- 3.) UNIT NOT DESIGNED FOR DRY OPERATION.
- 4.) PERFORMANCE BASED ON DATA LISTED ABOVE. ADDITIONAL FLOW WILL AFFECT PERFORMANCE AND PRESSURE DROP.

DESIGN DATA

| |
|--|
| MODEL No.:--HS--RAINMAKER--COLD/B4-12S |
| DESIGN: ----- 160 PSI @ 400 F |
| A.S.M.E. SECTION VIII, DIVISION 1, "U" STAMP |
| WEIGHT EMPTY ----- APPROX. 1,825# |
| WEIGHT FLOODED ---- APPROX. 1,915# |

----- NOTES -----

- 1.) REFER TO OPERATION AND MAINTENANCE MANUAL FOR UNIT INSTRUCTIONS.
- 2.) UNIT IS EQUIPPED WITH PLENUMS TO DIVERSIFY WATER THROUGH 1-1/2" DRAIN CONN'S.
- 3.) UNIT NOT DESIGNED FOR STACK LOADING
- 4.) EXTERNAL PIPING NOT TO BE SUPPORTED BY UNIT WATER MANIFOLD PIPE.
- 5.) SAFETY RELIEF VALVE INCLUDED
SET PRESSURE 160 PSI (MAX PUMP PRESSURE 144 PSI)
MAX CAPACITY 4,215 PPH
TO BE MOUNTED IN FIELD BY OTHERS SEE O & M MANUAL
- 6.) PAINT RUSTOLEUM HIGH HEAT BLACK # 7778--N/A
- 7.) MATERIALS OF CONSTRUCTION
TUBES--STAINLESS SA-249 TP 316L 3/4" O.D. x .049" WALL
HEADERS--SA-312 ERW TP 316L STAINLESS STEEL 4" NPT
INNER CASING-- STAINLESS STEEL
- 8.) UNIT NOT DESIGNED WITH A DAMPER THAT HAS A BLADE THAT MUST TRAVEL INSIDE THE GAS CONNECTION FLANGES. CONSULT FACTORY FOR SPECIAL APPLICATIONS.
- 9.) JOB INFORMATION
THIS ORDER IS FOR (1) ONE UNIT
CUSTOMER PURCHASE ORDER NO. P33793
CUSTOMER: BOILERSOURCE
- 10.) ISSUED FOR APPROVAL
- 11.) RELEASE FOR FABRICATION WILL BE CONSIDERED AS CUSTOMERS VERIFY ALL PERFORMANCE PARAMETERS UTILIZED IN THE GENERATION OF THE UNIT SIZING AS ACCURATE.
- 12.) OPTIONAL EQUIPMENT WITH THIS ORDER:
* UPGRADE TO 316 STAINLESS STEEL TUBES WITH HIGH PERFORMANCE ALUMINUM FINS.
* TYPE 2S CASING
- 13.) BOILERROOM EQUIPMENT PROPOSAL NO. 021108-113054

THIS DRAWING IS COMPRISED OF INFORMATION WHICH IS CONFIDENTIAL AND PROPRIETARY TO BOILERROOM EQUIPMENT INC. AND SHALL NOT BE DISCLOSED OUTSIDE OF THE COMPANIES TO WHOM IT IS SUBMITTED, AND SHALL NOT BE DUPLICATED, USED, OR DISCLOSED IN WHOLE OR IN PART WITHOUT THE WRITTEN PERMISSION OF BOILERROOM EQUIPMENT INC. BY AUTHORIZED INDIVIDUALS IN THE DIRECT CONDUCT OF BUSINESS WITH BOILERROOM EQUIPMENT INC.

| REV | DESCRIPTION | DATE |
|----------------|---------------------|---------|
| 0 | ISSUED FOR APPROVAL | 8/11/21 |
| REVISION TABLE | | |

BOILERROOM EQUIPMENT, INC.

11 RICH HILL ROAD
CHESWICK, PA 15024
Phone (866) 666-8977

SIDEKICK ECONOMIZER

PROJECT: COLUMBIA 40 HP FIRE TUBE BOILER ECONOMIZER

CUSTOMER: BOILERSOURCE

MODEL: HS-RAINMAKER-GOLD/B4-12S

| JOB NO. | DWG NO. | REV |
|-------------|---------------|---------------|
| 5910 | D-5910-2 | 0 |
| SCALE: NONE | DATE: 8/11/21 | DRAWN BY: DRM |