



## Engine Inspection/Condition Report

CUSTOMER:	<b>IDOT</b>	WORK ORDER NO:	<b>FS42104</b>
CUSTOMER PH:	<b>217-785-3275</b>	ENGINE MODEL:	<b>PT6A-60A</b>
AIRCRAFT REG. NO:	<b>N961LL</b>	ENGINE S/N:	<b>PCE-PK0269</b>
AIRCRAFT TT:	<b>5608:48</b>	AIRCRAFT TC:	<b>8687</b>
REASON FOR INSPECTION:		<b>Pre-Buy</b>	
INSTALLED ON AIRCRAFT S/N:		<b>FL-264</b>	
INSPECTION DATE:	<b>6/18/2015</b>	ENGINE POSITION:	<b>L/H</b>
TSN:	<b>5606:37</b>	CSN:	<b>8677</b>
TSO	<b>1644</b>	CSO	<b>N/A</b>
ISSUED BY:	<b>John Turner</b>		

# Engine Inspection Report



Engine Model:	PT6A-60A	Serial Number:	PCE-PK0269
Engine Time:	5608:37	Engine Cycle:	8677

- Data Plate

1<sup>st</sup>. Stage compressor , No defects noted



- 1<sup>st</sup>. Stage compressor , No defects noted

CT Blades , No defects



- CT Blades , No defects noted

CT Blades , No defects noted





# Engine Inspection Report



Engine Model:

PT6A-60A

Serial Number:

PCE-PK0269

Engine Time:

5608:37

Engine Cycle:

8677

- CT Blades , No defects noted

CT Blades , No defects noted



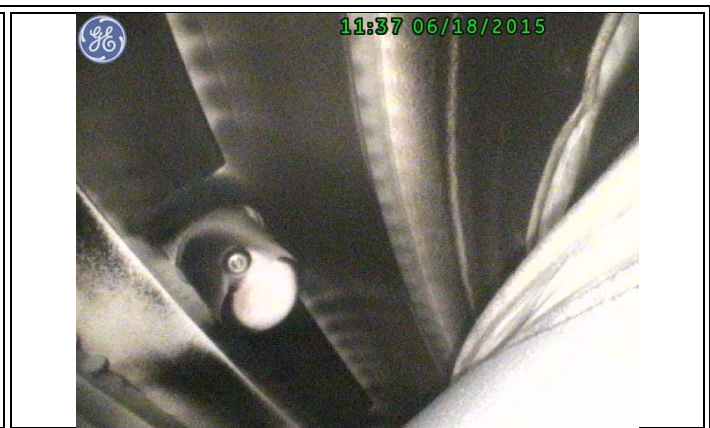
- 2<sup>nd</sup> Stage PT blades , No defects noted

2<sup>nd</sup> Stage PT blades , No defects noted



- Combustion Liner , No defects noted

Combustion Liner , No defects noted



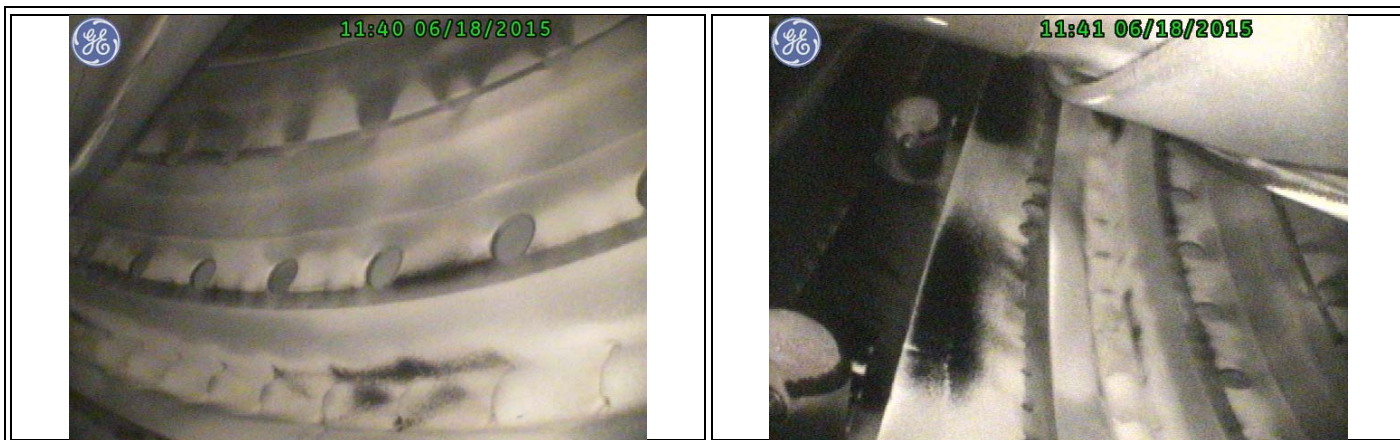
## Engine Inspection Report



Engine Model:	PT6A-60A	Serial Number:	PCE-PK0269
Engine Time:	5608:37	Engine Cycle:	8677

- Combustion Liner , No defects noted

Combustion Liner , No defects noted



- Engine appears normal for time in service no defects noted, Engine OK to continue service.