

OPERATION MANUAL



R-14EH



R14E-H: 1/2 HP, 10,000 psi Hydraulic Pump

Read and understand all of the instructions and safety information in this manual before operating or servicing this tool.



195 Internationale Blvd
Glendale Heights, IL 60139
Phone 800-860-6170
Fax 800-345-3767
www.spartacogroup.com

THANK YOU...

for purchasing a Huskie Tools product. Our mission is to supply the finest steel cable connecting and cutting tools and cable-related products to the transmission and distribution markets. Huskie Tools products represents the state-of-the-art tools and are dependable & safe. Trust, integrity, teamwork and mutual respect - these words are something we take to heart here at Huskie Tools.

Please take the time to read this manual carefully to learn how to correctly operate and maintain your tool.

Table of Contents

Registration/ Contents.....	2
Warranty.....	3
Safety.....	4
Specifications.....	5
Operating Instructions.....	6
Break Down.....	7 & 8
Parts List.....	9
TroubleShooting Guide.....	10

Warranty

Huskie Tools products carry a warranty that makes us a leader in the tool industry. No other manufacturer dares to back its tools as we do.

All Huskie REC-SERIES battery operated products carry a 5 year warranty. The ECO-SERIES battery operated products carry a 1 year warranty. The BP-80 & BP-84 batteries carry a 5 year warranty from the date stamped on the battery. The BP-82 battery carries a 1 year warranty.

PRODUCT WARRANTY

REC-Series battery operated products	5 Years
ECO-Series battery operated products	1 Years
Batteries (BP-80, BP-84)	5 years/ (BP-82) 1 year
Chargers (CH-90, CH-94)	5 Years

The warranty does not cover any damages incurred from a Huskie tool including damages to property, bodily injuries and lost wages resulting from such injuries. This warranty solely covers the repair or replacement of tools supplied by Huskie. These remedies are exclusive, and the total liability of Huskie Tools, LLC whether based on contract, warranty, negligence, indemnification, strict liability or otherwise, shall not exceed the purchase price of the tool. In no event shall Huskie Tools, LLC be liable for consequential, incidental or special damages.

HUSKIE TOOLS, LLC MAKES NO OTHER WARRANTIES OF ANY KIND, EXPRESSED OR IMPLIED, AND ALL IMPLIED WARRANTIES INCLUDING ANY WARRANTY OF MERCHANTABILITY AND FITNESS FOR A PARTICULAR PURPOSE ARE DISCLAIMED.

Huskie reserves the right to determine all warranty claims. Huskie will not warranty tools containing parts or batteries not originally supplied by Huskie. Failure due to misuse, improper maintenance, misapplication, not following instructions or warnings, abuse or repairs attempted by anyone other than Huskie Tools, LLC, or an authorized service center renders this warranty null and void.

Repair and Warranty Claims

All claims must be sent to Huskie for inspection and authorization. A Return Goods Authorization (RGA) is required before shipping tools to Huskie. Secure the authorization by telephoning or writing to Huskie's main office with details of the claim. Non-warranty repairs are handled using the same procedure. Repairs exceeding 50 percent of the cost of a new tool will be advised before repairs are made.

Payment Terms

Upon credit approval Huskie's standard payment terms are net-30 days. Visa, Mastercard, Discover and American Express are also accepted.

Freight

All Huskie tools are FOB, Glendale Heights, Illinois. Goods will be shipped pre-paid and added, unless otherwise specified. Freight shipments over \$17,000 are pre-paid.

Quotations

Special quantity quotations should be phoned in to discuss the scope of your tool requests.

Complete Support Services

Our customers have direct access to us for training, service, and problem solving. As specialists in tools, we maintain a trained repair staff and a large stock of parts. This contrasts with many tool suppliers who carry tools as a sideline without offering support services. Here are some reasons why our customers love to do business with us:

- Quick delivery
- We maintain inventory at our headquarters.
- Training and troubleshooting services.
- Fast repair service.
- Design and engineering service for special tool needs.



Safety Alert Symbol:

This safety alert symbol indicates a potential personal injury hazard; it is not used for messages related to property damage only.



Wear eye protection:

when operating this tool. Failure to wear eye protection could result in serious eye injury from flying debris.



Electric Shock hazard:

Use proper personal protective equipment when using this unit on or near energized electrical lines.

Pinch Point Hazard:



Compression Dies at high force can cause severe personal injury. Keep all body parts away from moving parts of the tool while operating.



HYDRAULIC PUMP (R-14EH)

Weight:	34 lbs.
Size:	11"L x 7.5"W x 16"H
Motor Size:	1/2 HP - 6.5 Amp
Delivery @200 psi:	157 cu/in./m
Delivery @10,000:	19 cu/in.
Oil Capacity:	120 cu/in.

R-14EH: MOTOR

Type:	Commutator
R.P.M.:	1200
Voltage:	AC 110V
Frequency:	50/60 Hz
Current:	6.5 A
Horse Power:	1/2

1/2 HP, 10,000 PSI HYDRAULIC PUMP

- Remote Operation Allows Full Operator Control
- Advance and Hold Feature Standard
- Manual Control Directly on Pump Motor
- Pressure Adjustment from 4,000 - 10,000

R-14EH: PUMP

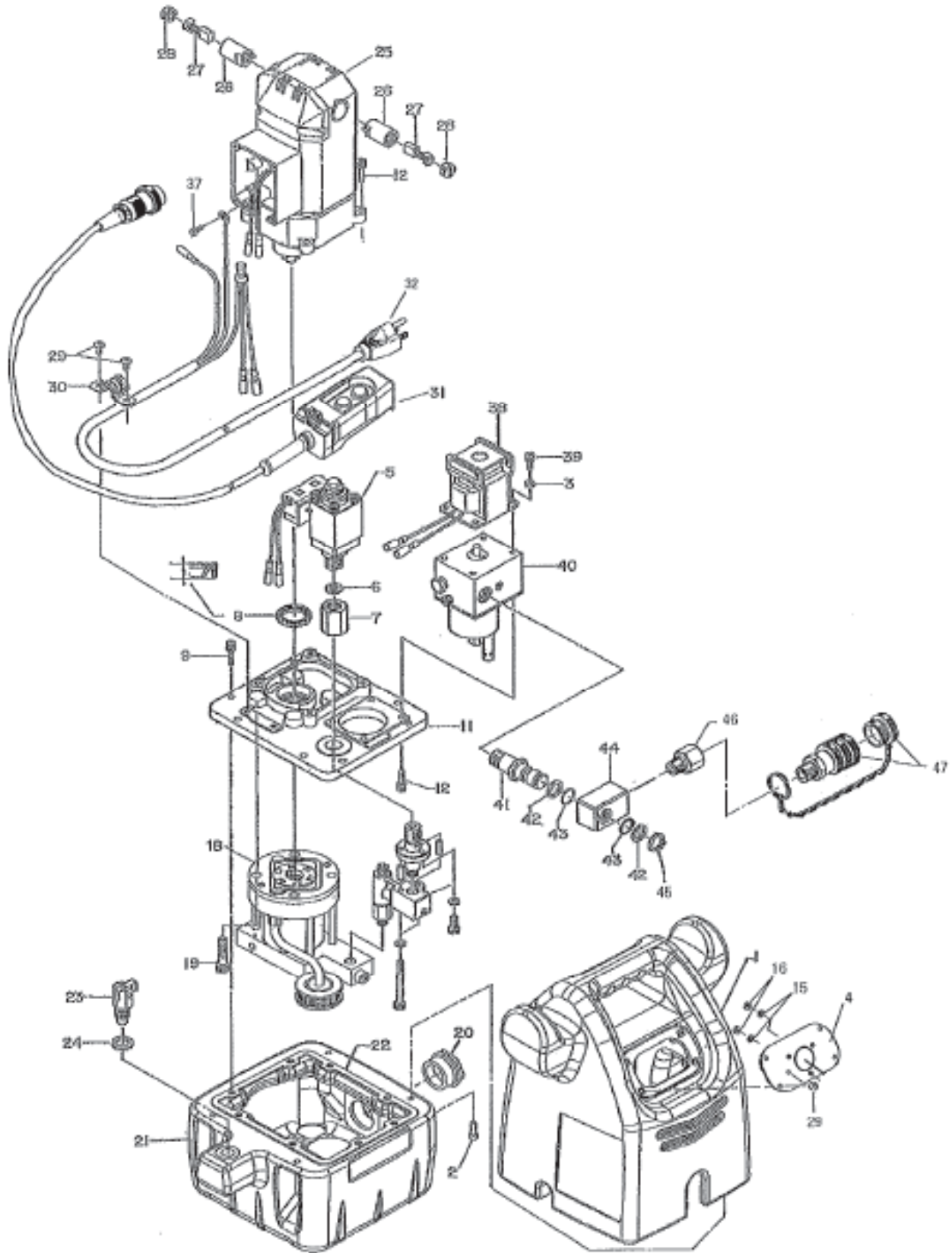
Low Pressure:	(300 psi)
Delivery:	157 in ³ /min.
High Pressure:	10,000 psi
Delivery:	19 in ³ /min.
Reservoir Capacity:	66 gal
Weight:	35 lbs.
Fluid Type:	T-15 or equal

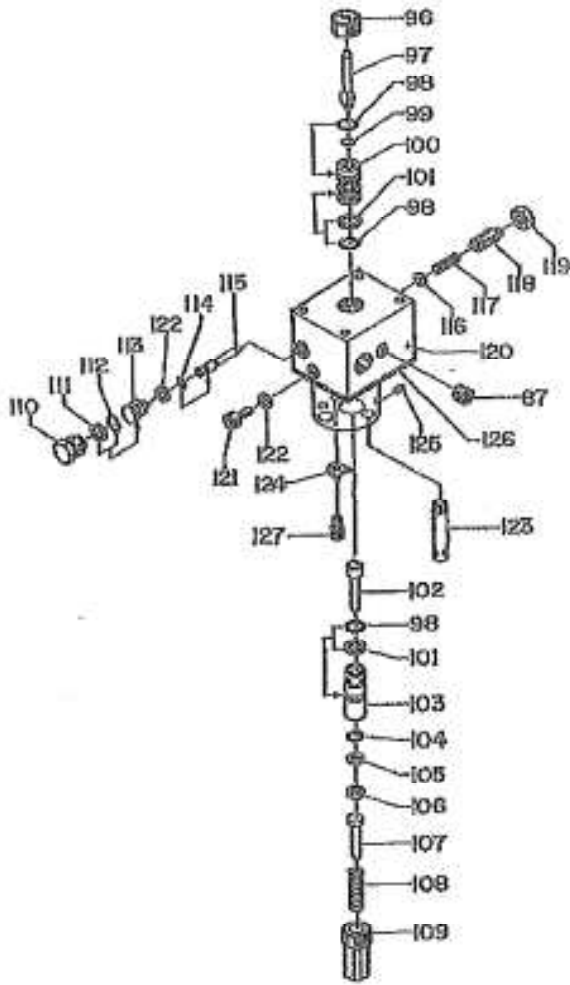
The **R-14EH** remote operated pump gives the operator complete control. Push buttons permit the user to advance and retract at will. The user is never committed to a full cycle, and can always back off at any time during the advance even under pressure. This feature increases efficiency because cuts and crimps can be adjusted as necessary, simply by stopping the advance or retract mode. A 10-foot remote control cable provides both safety and convenience. The user can set up an operation and then move away from the work site before engaging the tool. An over-ride switch on the pump allows full control at the pump motor. The low amperage of this pump allows it to be used virtually anywhere. The pressure can be easily adjusted between 4,000 and 10,000 psi and determined by using our PG-1 in-line gauge. Consult factory for proper adjusting procedure.

NOTE: When using any of these high pressure tools, always use 10,000 psi rated non-conductive hose (NC-16 series).

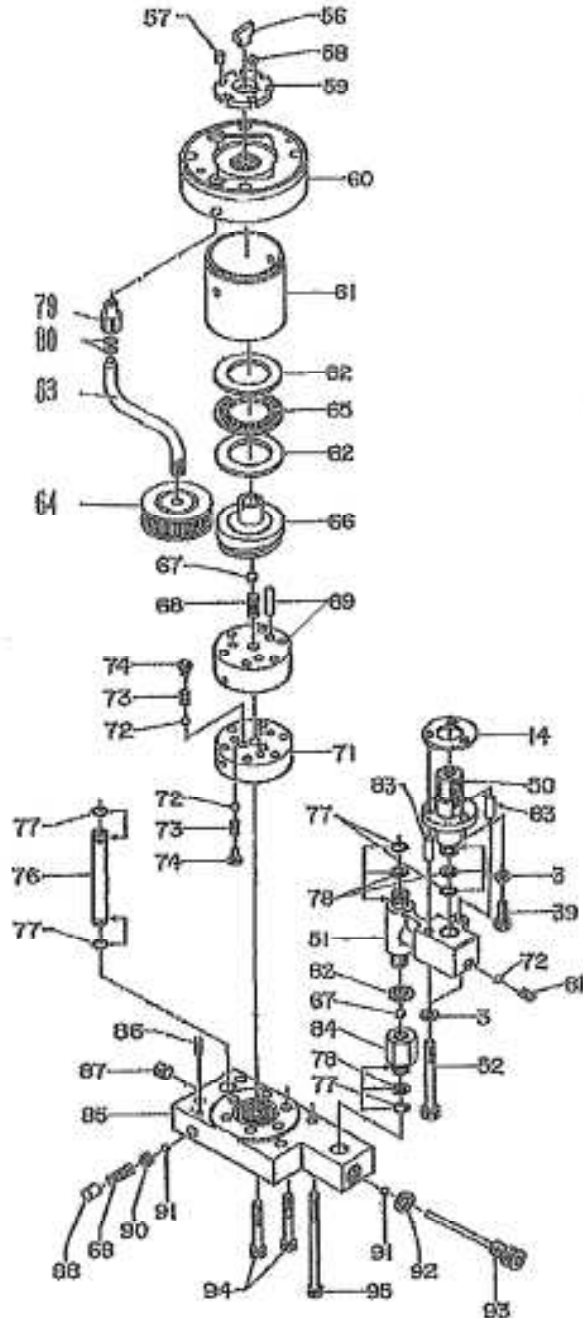
OPERATING INSTRUCTIONS FOR R-14EH

1. Connect all couplers on tool, hose, and pump. Make sure all couplers are secure before operating.
2. Plug electrical cord into 110 volt AC outlet.
3. Open air vent before operation. Flip lever up on oil filler port to vent. Close lever when storing or transporting.
4. To check the release solenoid, depress "DOWN" button on the remote control switch. An audible "click" will be heard.
5. By pressing the "UP" button, motor will begin to run, generating oil flow and tool will advance.
6. To stop motor (and pump), release "UP" button. Oil pressure will remain constant until "DOWN" button is depressed to relieve pressure. To continue the increase in oil pressure, depress "UP" button.
7. By pressing "UP" button and holding, pump will generate a maximum pressure of 10,000 psi. At that point, an automatic pressure switch will activate and further pressure cannot be generated. The pump will automatically shut off when pressure setting is reached. An in-line gauge (Huskie PG-1) can be used to determine output pressure. The pressure is factory set at 10,000 psi.
8. To relieve oil pressure, depress the "DOWN" button and hold. Oil in tool cylinder will return to tank and the tool will be ready to begin the next cycle.
9. Occasionally check oil level through the visual oil port just below the vent. Oil level should be on or just above the red dot in the center of the window. If oil needs to be added, remove the vent from the reservoir and fill to proper level.





40 CONSTRUCTION



JB CONSTRUCTION

NO.	DESCRIPTION	CODE	QTY.
1	Pump Cover	RH-01	1
2	M5 X 10 Screw	RF1-01	4
3	M5 Lock Washer	410-09	4
4	Cover Plate	RH-09	1
5	Pressure Switch KPS700-1	RF-03	1
6	Copper Gasket (3)	RF-04	1
7	Switch Adapter	RB-03	1
8	Oil Seal OS1.7233	RB-10	1
9	M5 x 18 Screw (sems)	RC33-03	8
11	Main Base (R14E-H)	RH-04	1
12	M5 X 22 Screw (sems)	RF1-03	8
18	Pump Ass'y	RF-10	1
19	M8 X 35 Screw	32C-02	4
20	Oil Gauge (R14E-H)	RH-05	1
21	Oil Reservoir (R14E-H)	RH-06H	1
22	Gasket for Reservoir	RH-07	1
23	Air Valve Ass'y	RF-13	1
24	W-14 SI Seal Washer	RB-09	1
25	Motor (120v)	RF-14HA	1
26	Brush Holder	RF-29A	2
27	Brush	RF-15B	2
28	Brush Cap	RF-16B	2
29	M4 X 6 Screw	RF-18	2
30	Conduit Saddle	RF-19	1
31	Switch Ass'y (R14E-H)	P600-01	1
32	Power Cord	RF-55	1
33	Cap MCS-254-Rca	E1-06	1
36	M3 X 8 Screw	E3-97	1
37	M4 X 5 Screw	RFL1-03	1
38	Solenoid (120v)	RF-20A	1
39	M5 X 14 Screw	RF-49	4
40	Solenoid Valve Ass'y	RF-21	1
41	Male Swivel Joint	RF-22	1
42	P-16 Back-Up Ring (B.C.)	22-24	2
43	P-16 O-Ring	22-25	2
44	Female Swivel Joint	RF-24	1
45	KS-16 Snap Ring	RF-23	1
46	Adapter 3/8" PT-M. 3/8" NPT-F.	P85-80	1
47	Female Coupler	FC-8 / DP-8	1
50	Holder	RF1-09	1
51	High Pressure Joint	RF1-10	1
52	M5 x 55 Screw	RF1-06	1
56	Key (1)	RB-30	1
57	6 X 6 Roller	RB-31	6
58	Key (2)	RB-32	1
59	Rotor	RB-33	1
60	Vane Cap Ass'y	RB-34	1
61	Drum	RB-35	1
62	Bearing Plate AS-1106	RB-36	2
63	Suction Pipe	RCP-29	1
64	Strainer	RF-25	1
65	Needle Thrust Bearing	RB-37	1
66	Cam Ass'y	RF-26	1
67	1/4" Ball	26-22	2

NO.	DESCRIPTION	CODE	QTY.
68	Spring (70)	RB-44	2
69	Cylinder Ass'y	RB-46A	1
71	Check Valve (1)	RB-47	1
72	3/16" Ball	16-49	7
73	Spring (4)	16-48	6
74	Spring Holder	RB-48	6
76	Low Pressure Pipe	RB-53	1
77	P-7 O-Ring	16-60	5
78	P-7 Back-Up Ring (B.C.)	RB-49	3
79	Suction Joint	RCP-28	1
80	P-8 O-ring	85-34	1
81	M6x6 Screw (F.P.)	40U-14	1
82	Copper Gasket (7)	E3-68	1
84	Joint (2)	RF-46	1
85	Base	RF-32	1
86	3 X 18 Drive Pin (AW)	RF-33	1
87	PT 1/8" Screw	RB-55	2
88	Spring Holder (1)	RB-57	1
90	Ball Holder	RB-58	1
91	7/32" Ball	16-26	2
92	Copper Gasket (4)	26-20	1
93	Stopper Screw	RB-60	1
94	M6 X 40 Screw	RB-61	7
95	M6 X 85 Screw	RB-62	4
96	Plug (2)	RB-63	1
97	Push Pin	RF-34	1
98	P-10A O-Ring	RB-65	3
99	P-4 O-Ring	410-08	1
100	Valve Seat (1)	RB-67	1
101	P-10A Back-Up Ring (B.C.)	RB-66	2
102	Release Valve	RB-68	1
103	Release Valve Holder	RB-69	1
104	P-6 O-Ring	RB-70	1
105	P-6 Back-Up Ring (E.L.)	RB-71	1
106	Stopper Ring	RB-72	1
107	Shaft	RF-35	1
108	Spring (119)	RB-74	1
109	Plug (1)	RB-75	1
110	Stopper Screw	RF-36	1
111	P-9 Back-Up Ring (B.C.)	32A-01	1
112	P-9 O-Ring	RF-38	1
113	Valve Seat (2)	RF-39	1
114	P-3 O-Ring	16-36	1
115	Valve Stem	RF-40	1
116	Washer	RF-41	1
117	Spring (194)	RF-42	1
118	Adjusting Screw	RF-43	1
119	Lock Nut	RB-84	1
120	Valve Body	RF-44	1
121	M6 X 12 Screw	RB-87	1
122	Copper Gasket (2)	RF-45	2
123	Exhaust Pipe	RB-88	1
124	Retainer	RF-47	1
125	M4 X 4 Screw	RF-48	1
126	Gasket (22)	RF-44G	1
127	M5x10 Screw	RF1-01	1

TROUBLESHOOTING GUIDE

1. All electrical pumps are designed to operate on 110 Volt AC. All are 2 stage rapid advance. See individual pump specifications for flow ratings.
2. Hoses over 50 feet in length can be used but with sacrifice of oil speed flow. Hose lengths of 25' or less are ideal.
3. The R14EA is a larger remotely controlled automatic pump with a few more features than the R14EH unit. This unit has an auto mode which when activated runs the unit up to pressure and automatically releases the pressure when 10,000 psi or predetermined pressure is reached and the oil is dumped back to the oil reservoir. This pump is used for production cutting or compressing applications where portability is not a factor.
4. When attaching hoses, please be sure all couplers are securely fastened. 90% of problems arise out of a loose coupler connection. If the unit fails to pump or retract, the problem usually lies with the couplers.
5. Always keep couplers clean by wiping oil and debris from surfaces before connecting hoses to pump or tool.
6. Never move pump by pulling on the electrical cords.
7. Occasionally check the fluid level of the pump. See individual pump operating instructions for proper oil level. When adding fluid, always use T-15 or equivalent hydraulic fluid.
8. Always open the air breather vent cap on the oil filler port before operating the tool. This will eliminate the problem of a vacuum situation when the oil is pumped from the tank. Always close the air vent when storing to eliminate the problem of oil leakage if the unit is turned over.
9. Pressure setting is preset at 10,000 psi but can be changed to lower settings if desired. An in-line gauge (Huskie PG-1) should be used periodically to determine your required operating pressure. Consult factory for proper adjusting procedure.





195 Internationale Blvd
Glendale Heights, IL 60139
Phone 800-860-6170
Fax 800-345-3767
www.spartacogroup.com