

HOUSE 214 DESIGN

The House 214 Design School

The Distinctive Feeling Decorating Elements

By Melinda McCoy
House 214 Design

A Few Quick Notes

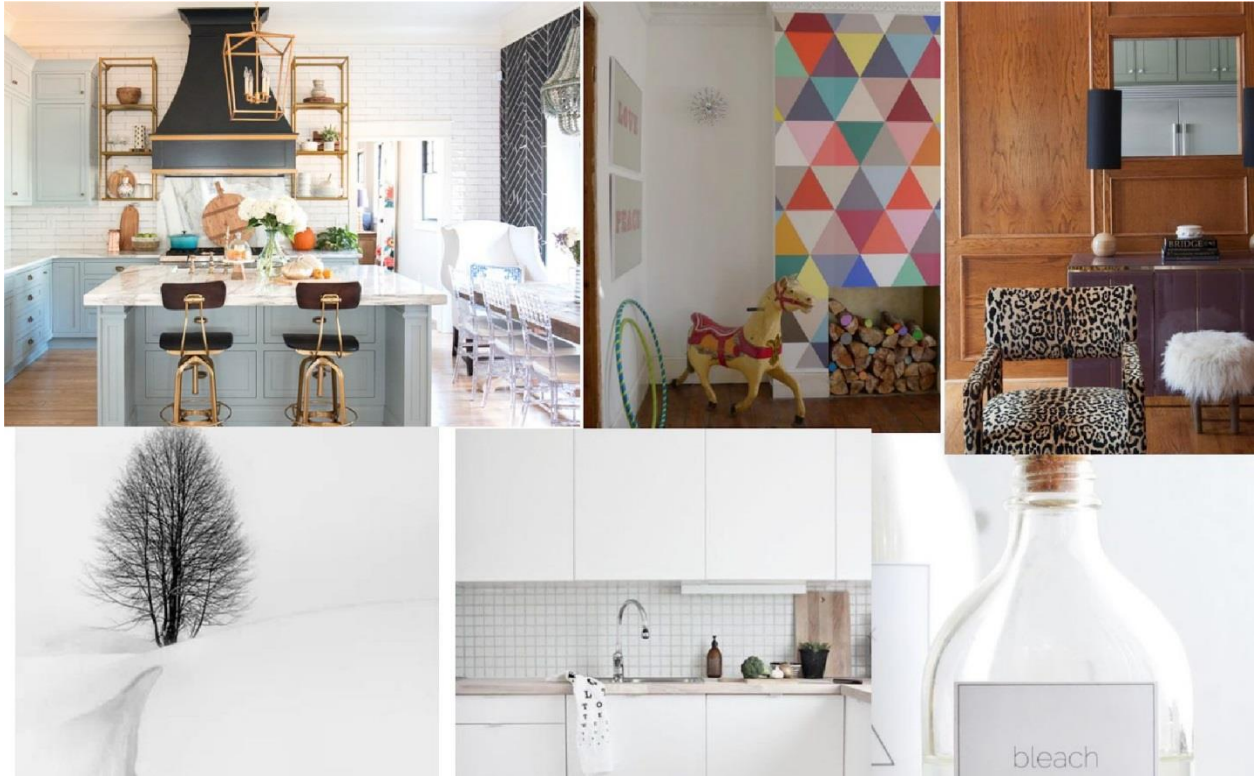
The key to decorating a home that feels distinctive is to first understand the distinctive feeling. Each feeling relates to a specific time of year, and for the distinctive feeling that time of year is the winter season.

The first side of winter is the dramatic side of the season. Picture a white snow-covered field and then the sudden drama of a dark tree trunk that comes into view. You notice the image of the tree amongst all the white, don't you? Think about snowstorms and blizzards. Winter can be an intense and dramatic time.

The other side of winter is the understated side of the season. This is the side of winter when most of nature is quiet and has withdrawn from the surface. Think about the calm and quiet that an unbroken white winter landscape can create.

Knowing which specific side of the distinctive feeling best communicates you is important to understand. It is how you will focus, and ultimately learn how to make the right decorating decisions for you and your home.

Let's get started!!



1. The Dramatic Side of Distinctive

Personality Traits: strong, leader, edgy, bold

Description: dramatic, luxurious, feels expensive, noticeable

Colors: strong, intense
- i.e. rich in feel, sparkling metallics



Image Credit: www.etsy.com



Image Credit: www.nudevotion.com

Finish: shiny, high gloss, polished
- i.e. chrome, gold, mirrored pieces



Image Credit:
www.miamiamine.com



Image Credit: www.zarahome.com

Patterns/Textures:

rich in feel, feels expensive, noticeable, luxurious



Image Credit:
www.themakerista.com



Image Credit:
www.pbteen.com

Collections:

animal print/fur pillows, metallic frames, gold candle holders

Misc.:

high end accessories, luxurious brands

**** Remember to always keep in mind the colors of the dramatic side of distinctive when making your decisions.****

The Understated Side of Distinctive

Personality Traits: strong, leader, respected, forward thinking, efficient, effective

Description: sense of space, uncluttered, minimal, edited

Colors: cool, strong, intense
i.e. pure white, pure black, strong contrasts

Finishes: shiny, high gloss, transparent
i.e. pure white, pure black, strong contrasts



Image Credit:
www.ikea.com



Image Credit:
www.circalighting.com

Patterns: geometric, clean lines, sharp angles



Image Credit:
www.pinterest.com



Image Credit:
www.instagram.com

Textures:

smooth, sleek
i.e. polished concrete, mirrors

Collections:

black and white modern art, geometric
vase



Image Credit:
www.etsy.com



Image Credit:
www.luluandgeorgia.com

Misc.:

acrylic pieces, furniture with sharp lines, black and
white accessories

**** Remember to always keep in mind the colors
of the understated side of distinctive when
making your decisions.****

So, what do you think?

Are you starting to get a feel for what side of the distinctive feeling you gravitate towards? Fantastic! Now you know the decorating elements that you should be choosing for your home to create that particular feeling.

It really is that easy!

Do you want to finally know your decorating style?

My “Finally Feel Home” step-by-step blueprint in [The House 214 Design School](#) will have you knowing your decorating styles. You will learn how to focus, make the right decorating decisions, and finally feel home.

Get started today!