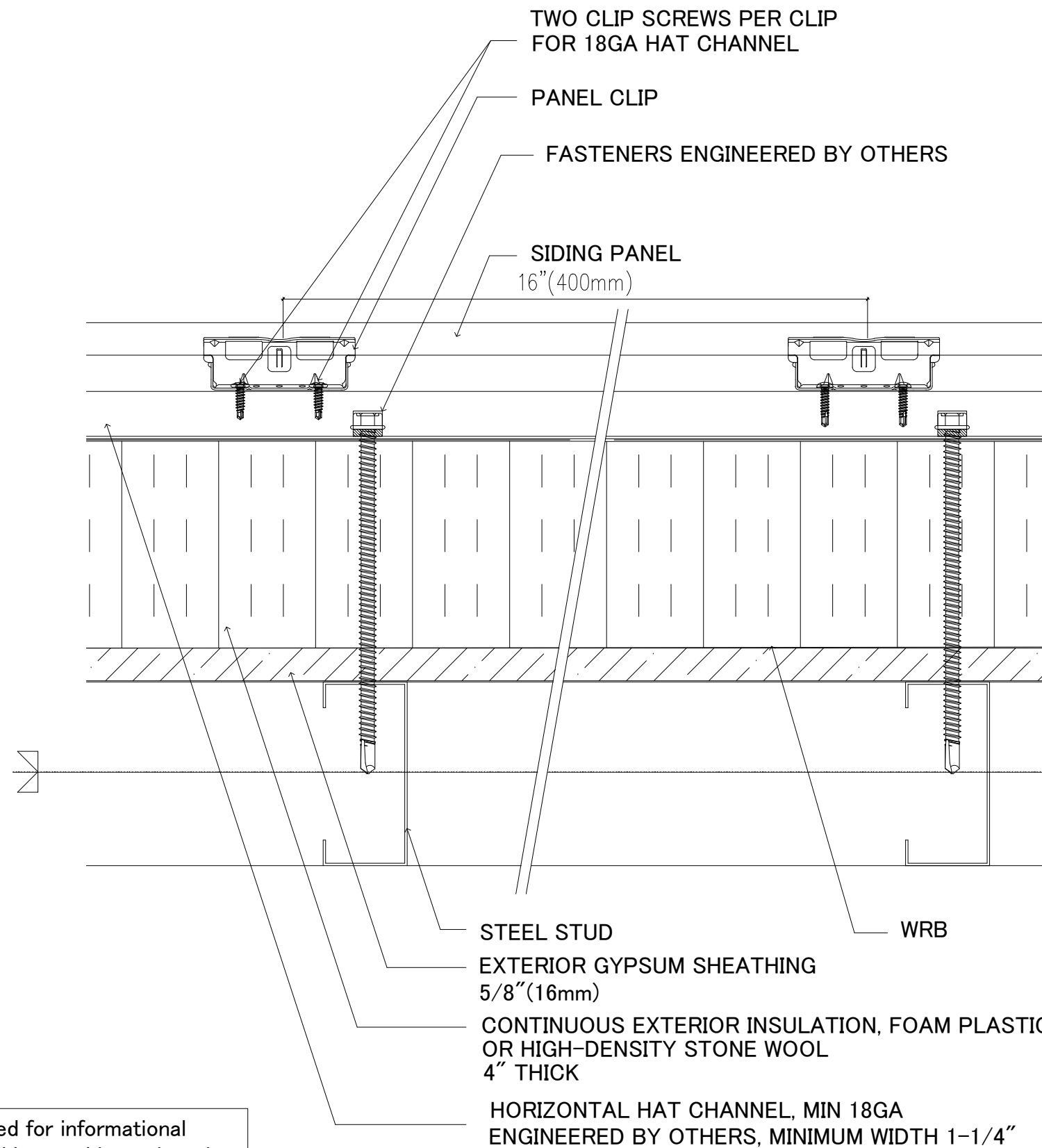
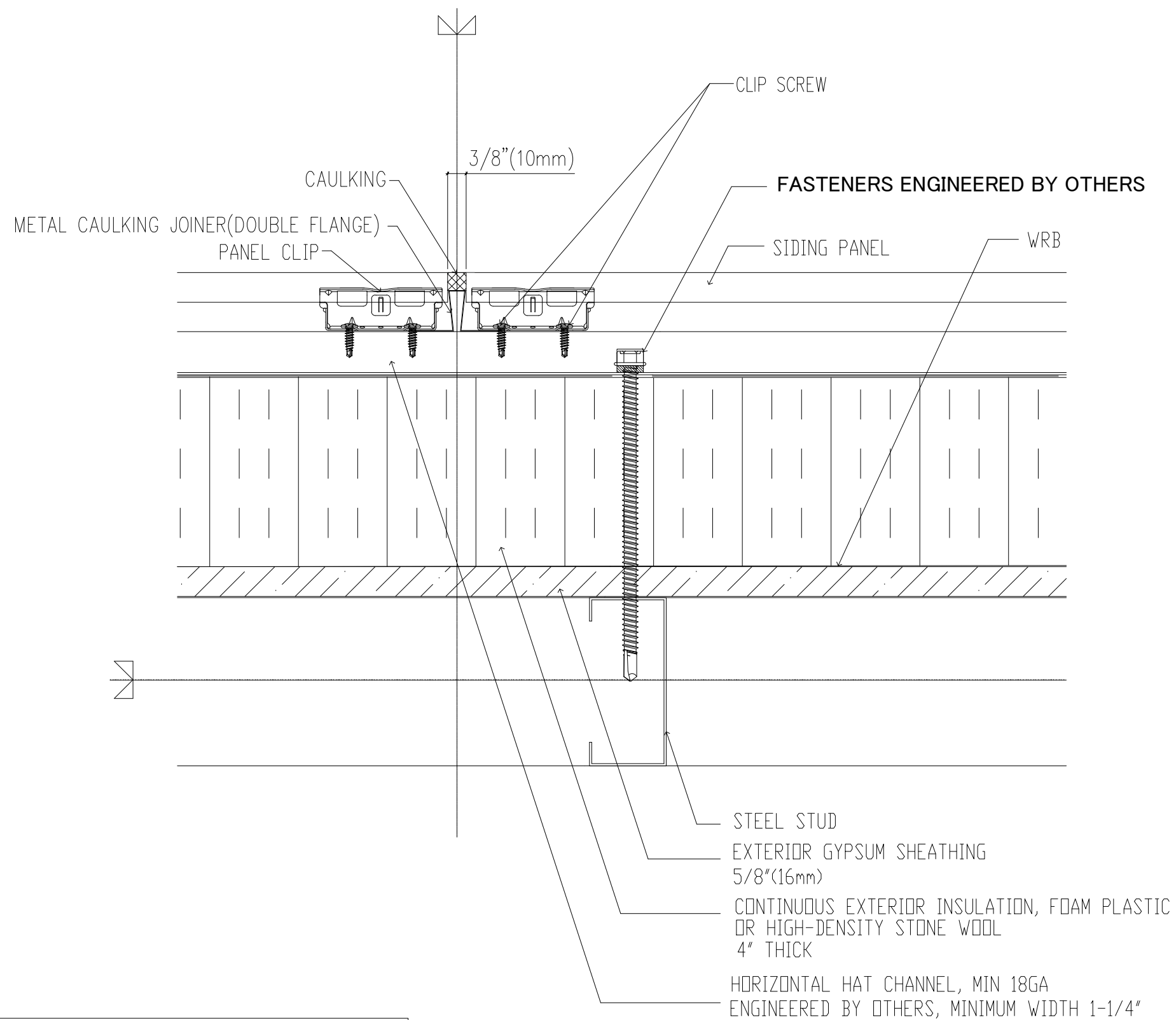


# 1 STARTER BAR (Hat Channel/Horizontal)



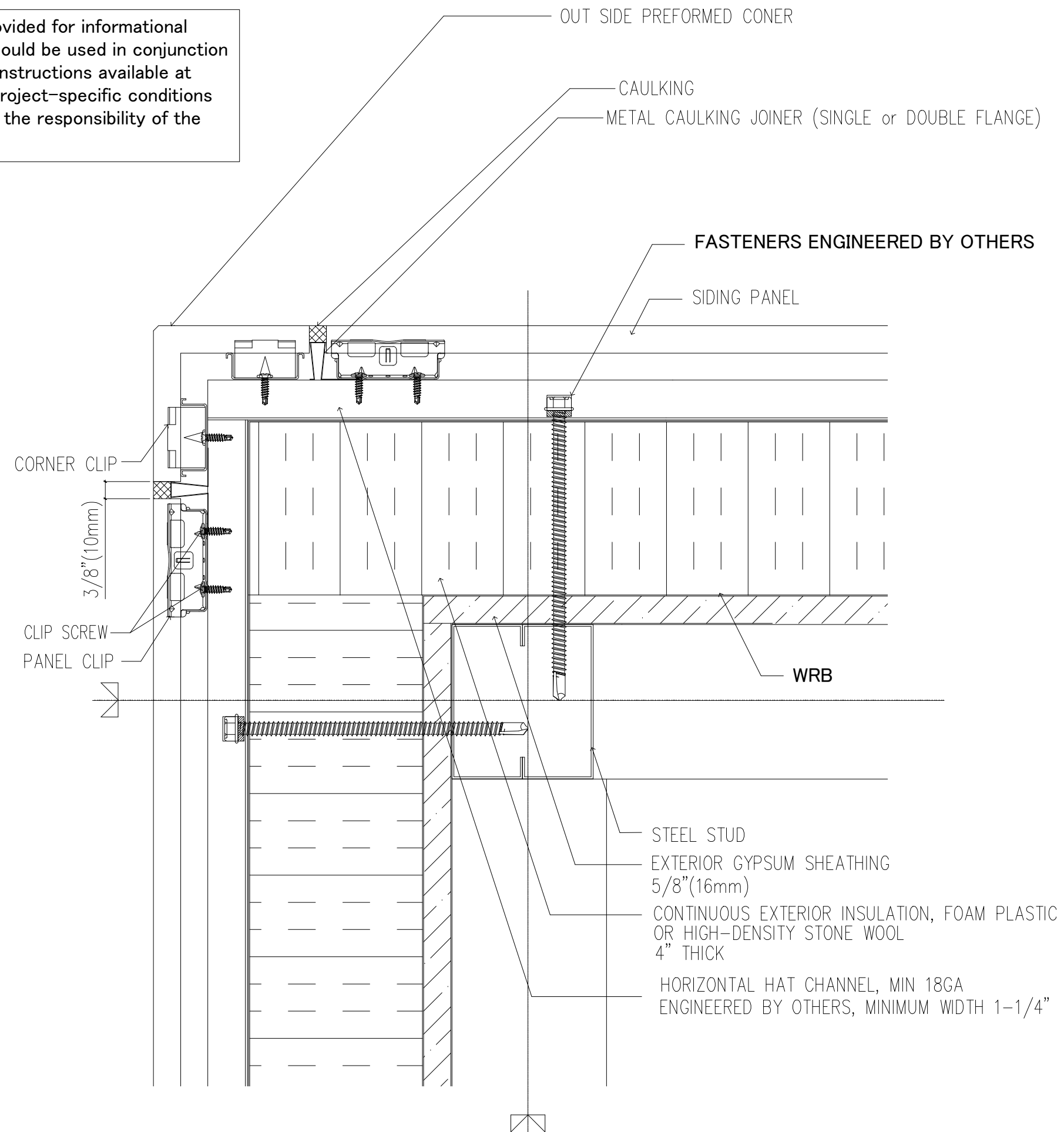
These details are provided for informational  
 purposes only and should be used in conjunction  
 with the installation instructions available at  
[www.ceraclad.com](http://www.ceraclad.com). Project-specific conditions  
 and details fall under the responsibility of the  
 design professional.

2 HORIZONTAL PLAN (Hat Channel/Horizontal)

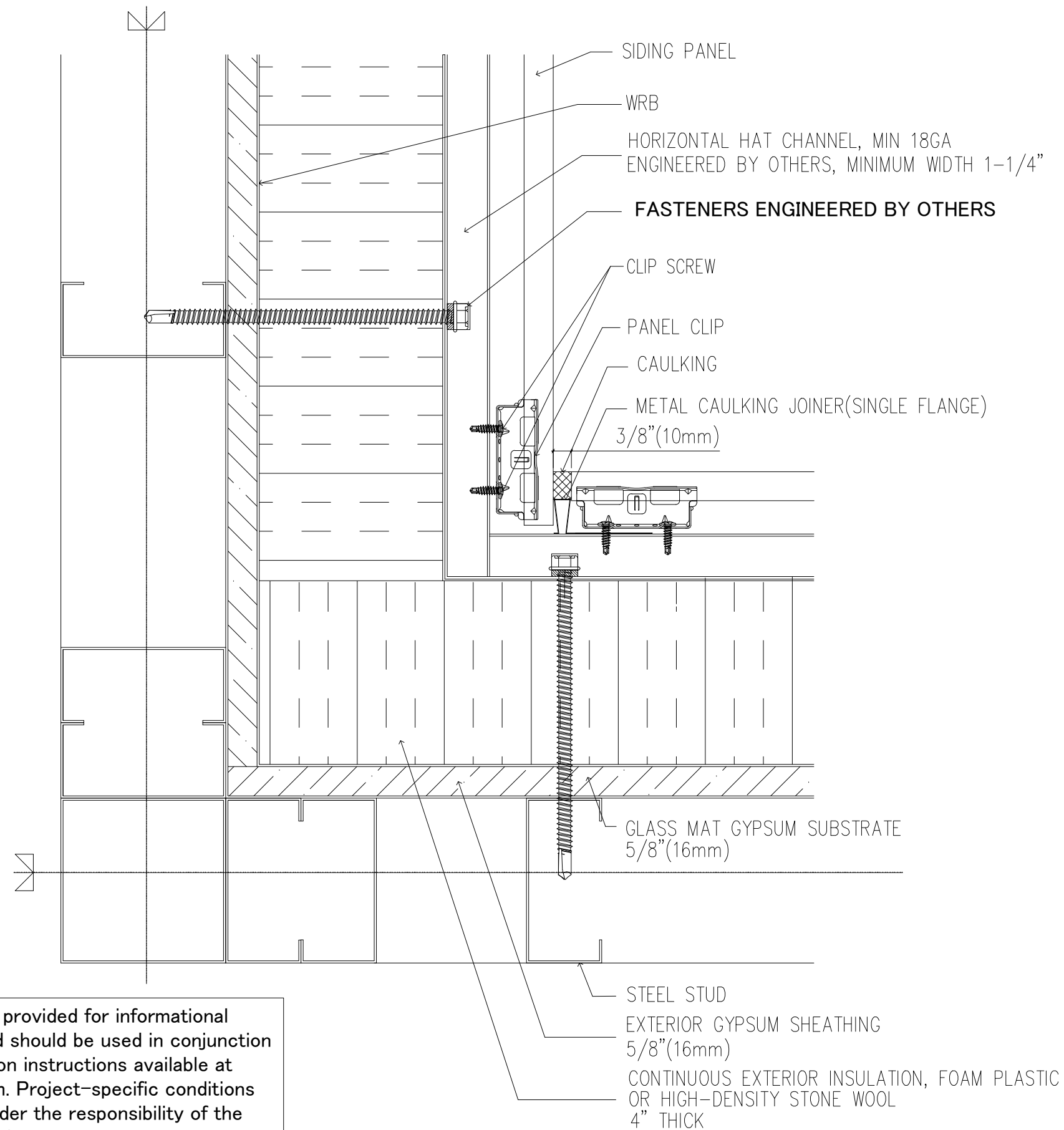


These details are provided for informational purposes only and should be used in conjunction with the installation instructions available at [www.ceraclad.com](http://www.ceraclad.com). Project-specific conditions and details fall under the responsibility of the design professional.

These details are provided for informational purposes only and should be used in conjunction with the installation instructions available at [www.ceraclad.com](http://www.ceraclad.com). Project-specific conditions and details fall under the responsibility of the design professional.



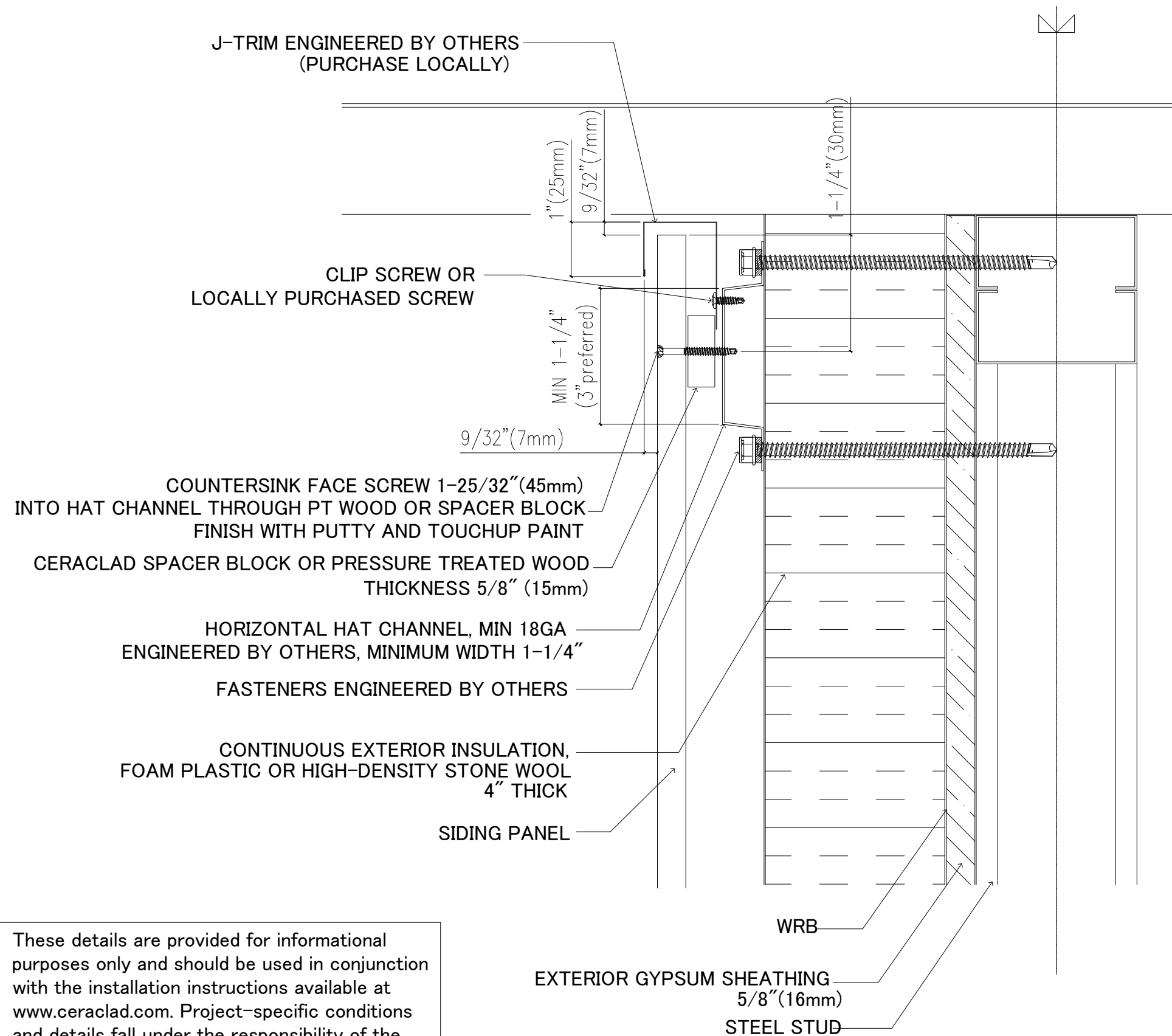
# 4 OUTSIDE PREFORMED CORNER (Hat Channel/Horizontal)



These details are provided for informational purposes only and should be used in conjunction with the installation instructions available at [www.ceraclad.com](http://www.ceraclad.com). Project-specific conditions and details fall under the responsibility of the design professional.

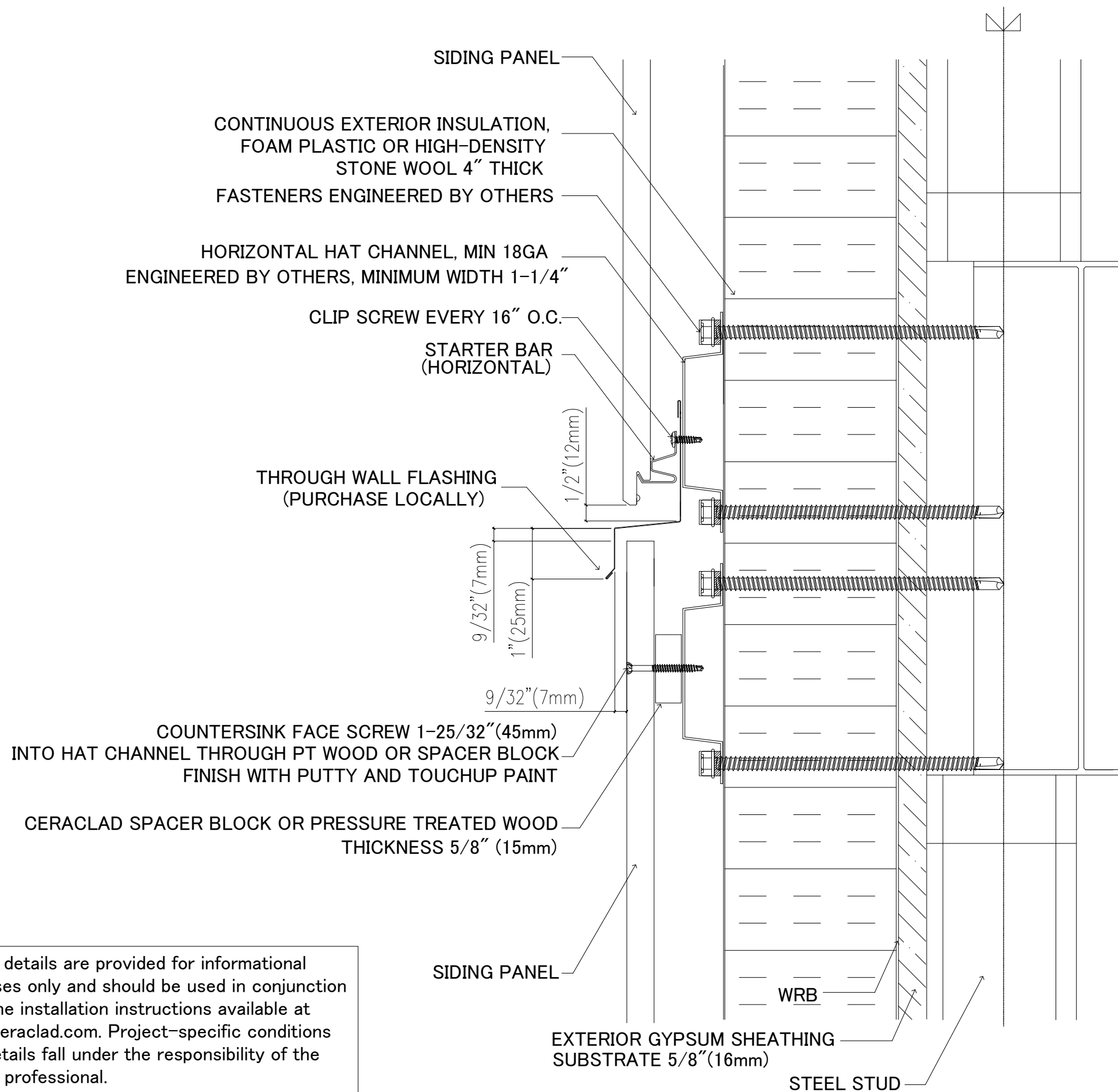
5

INSIDE CORNER (Hat Channel/Horizontal)



These details are provided for informational purposes only and should be used in conjunction with the installation instructions available at [www.ceraclad.com](http://www.ceraclad.com). Project-specific conditions and details fall under the responsibility of the design professional.

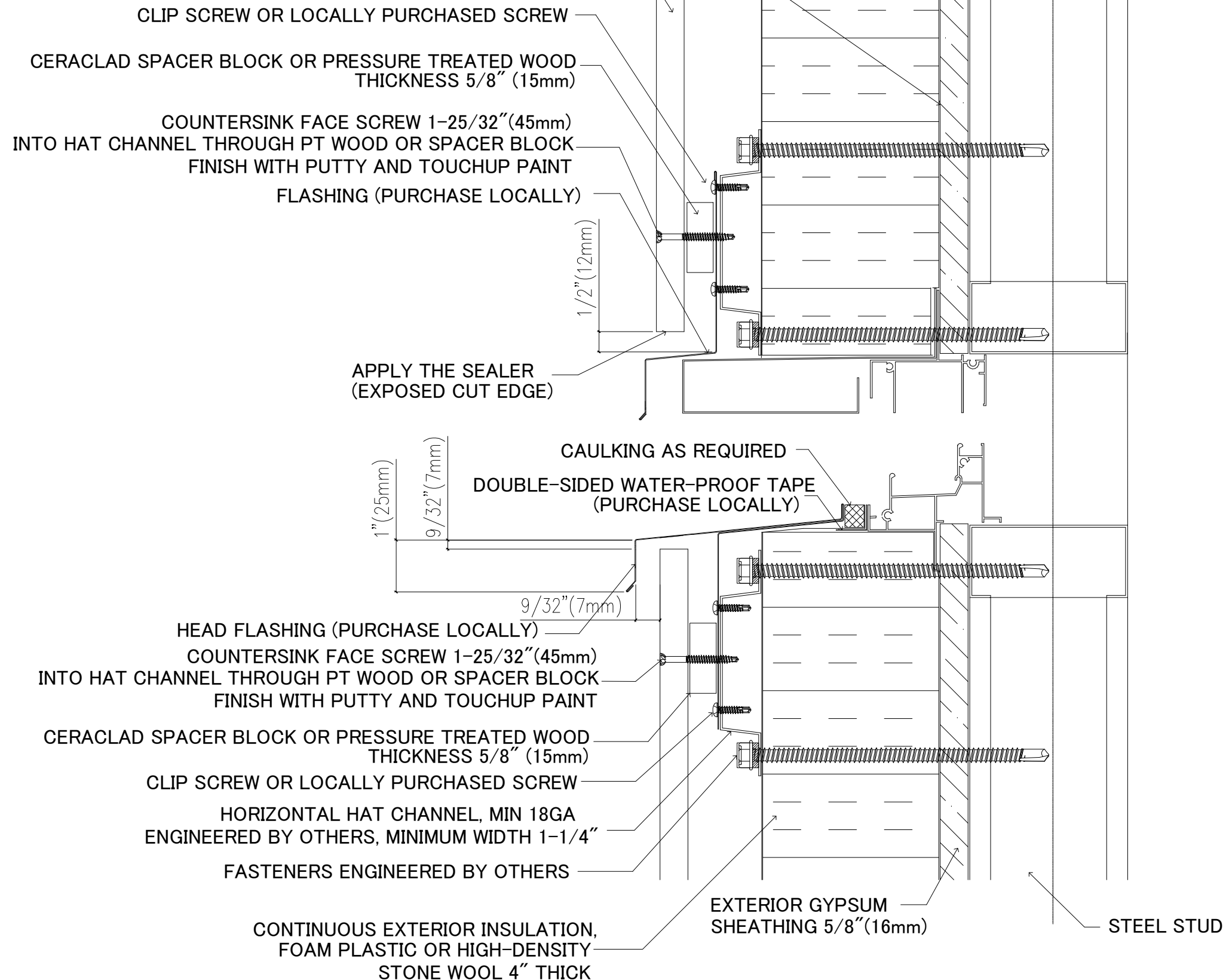
## 6 UNDER EAVES (Hat Channel/Horizontal)



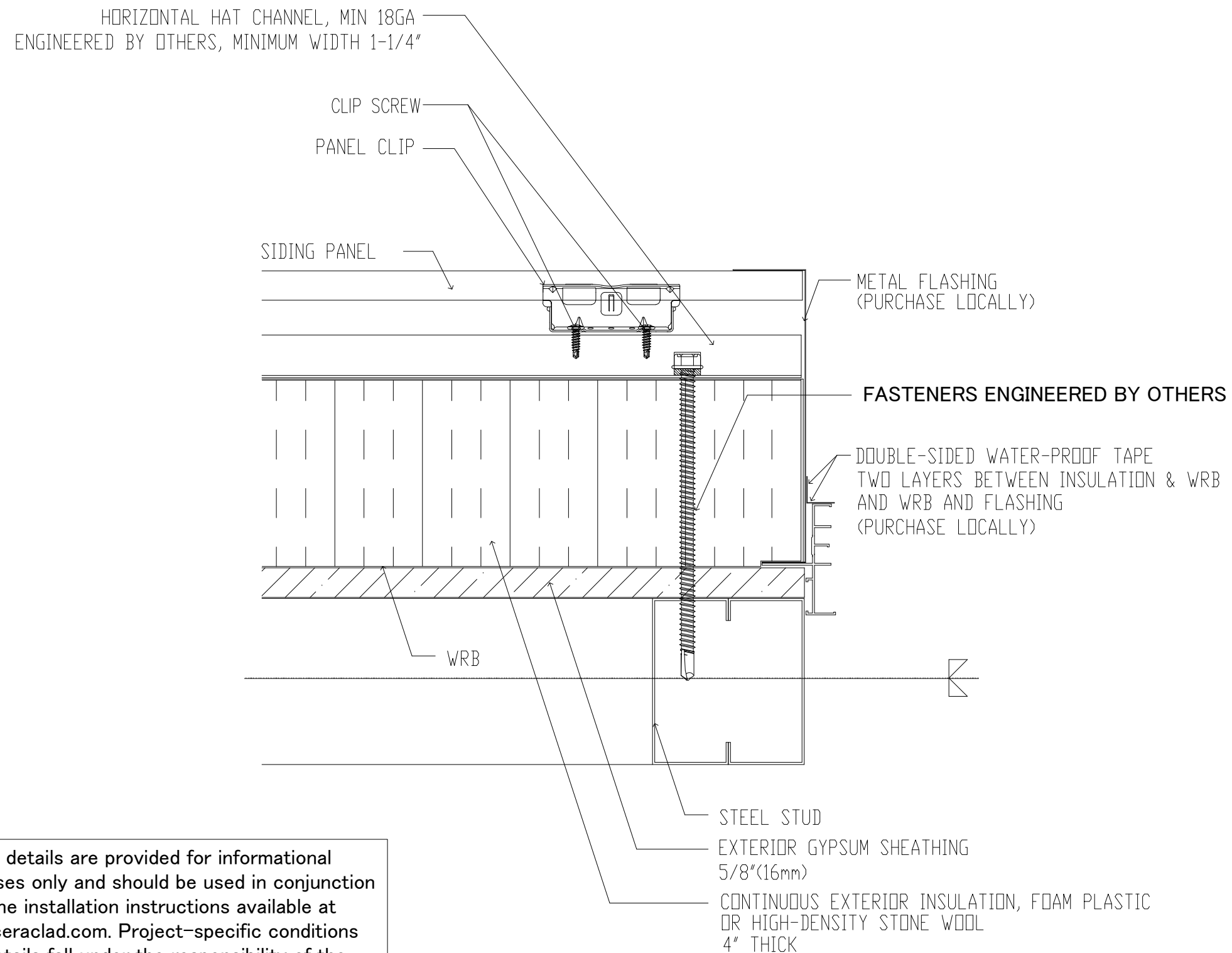
These details are provided for informational purposes only and should be used in conjunction with the installation instructions available at [www.ceracLad.com](http://www.ceracLad.com). Project-specific conditions and details fall under the responsibility of the design professional.

## THROUGH WALL FLASHING (Hat Channel/Horizontal)

These details are provided for informational purposes only and should be used in conjunction with the installation instructions available at [www.ceraclad.com](http://www.ceraclad.com). Project-specific conditions and details fall under the responsibility of the design professional.



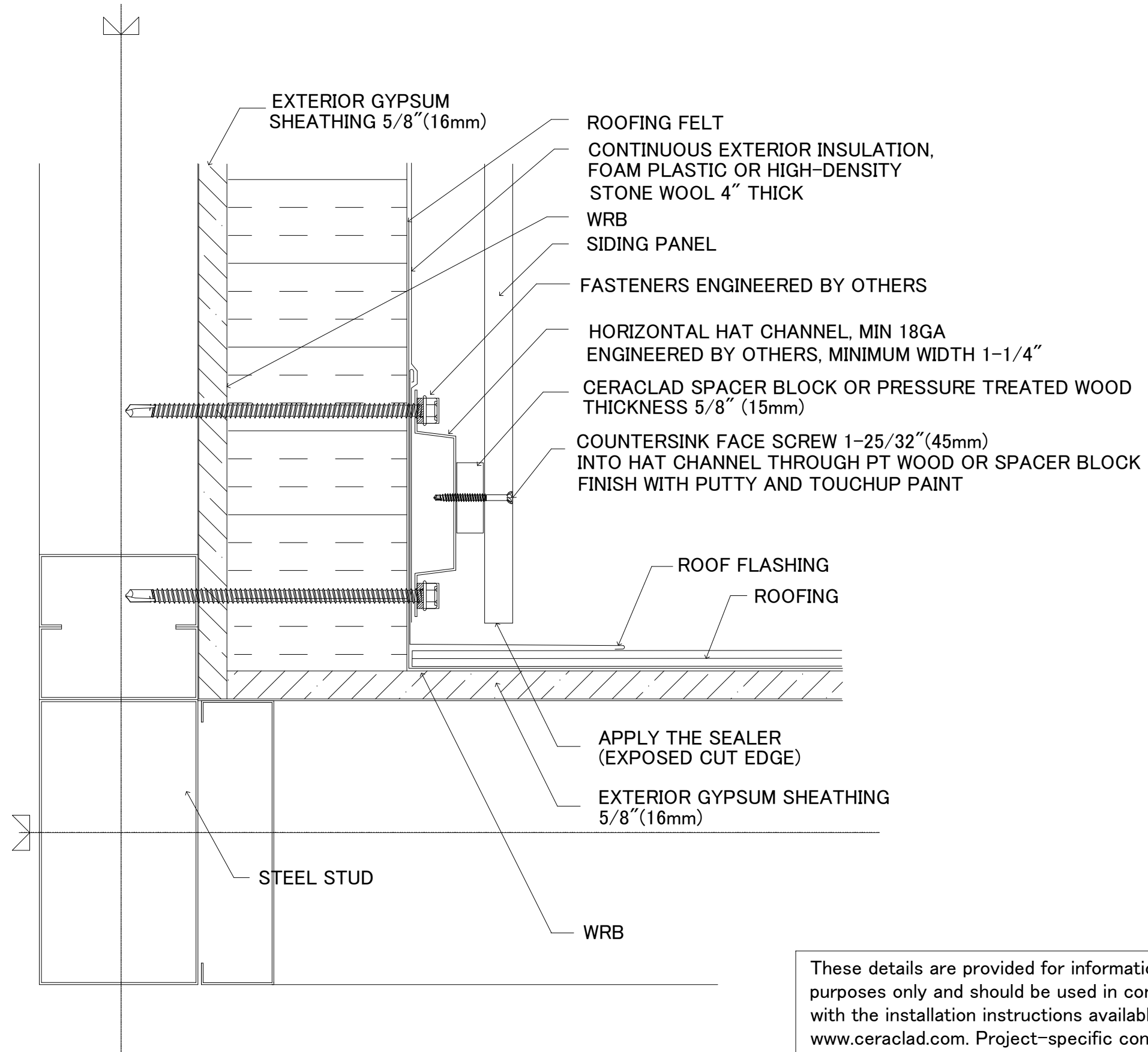




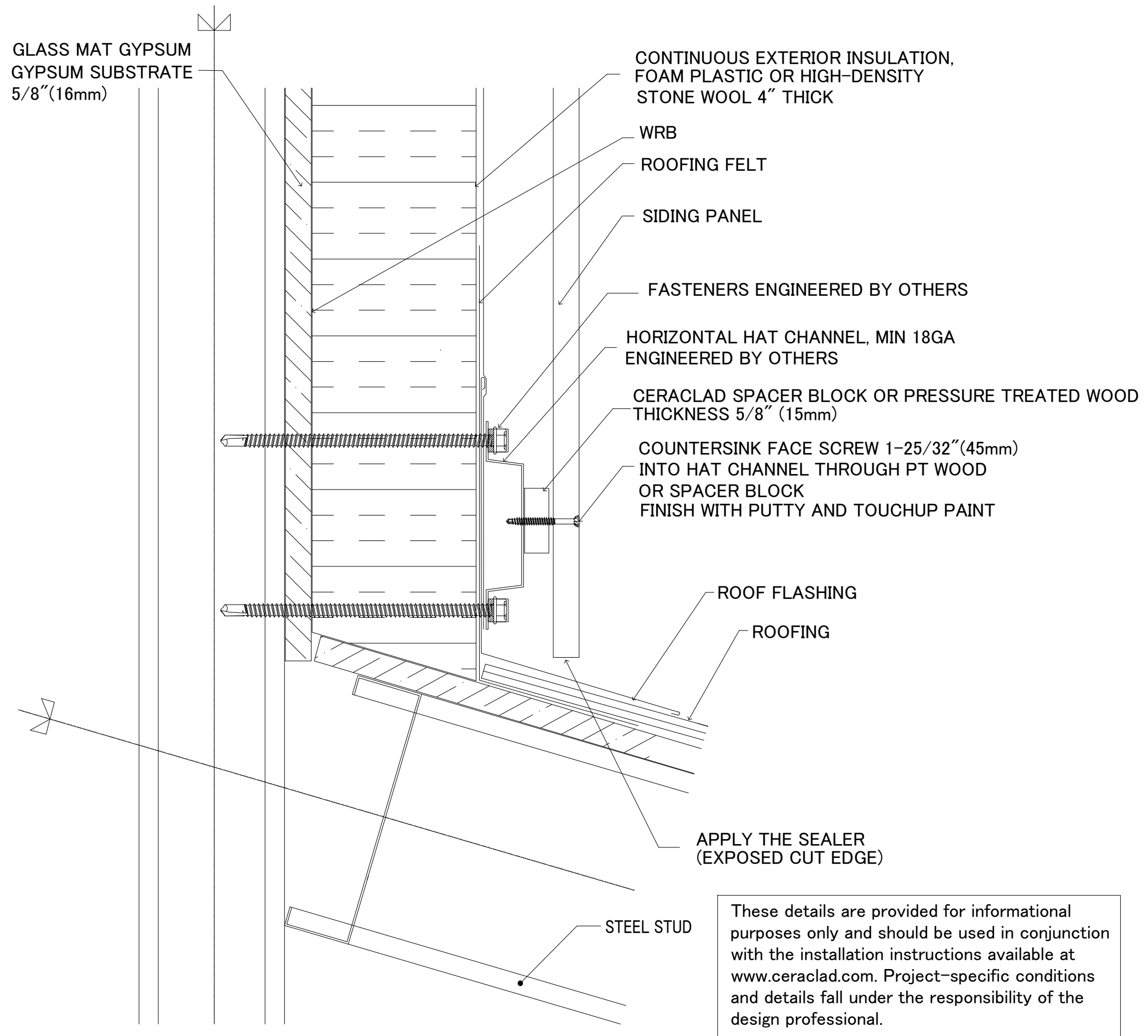
These details are provided for informational purposes only and should be used in conjunction with the installation instructions available at [www.ceraclad.com](http://www.ceraclad.com). Project-specific conditions and details fall under the responsibility of the design professional.

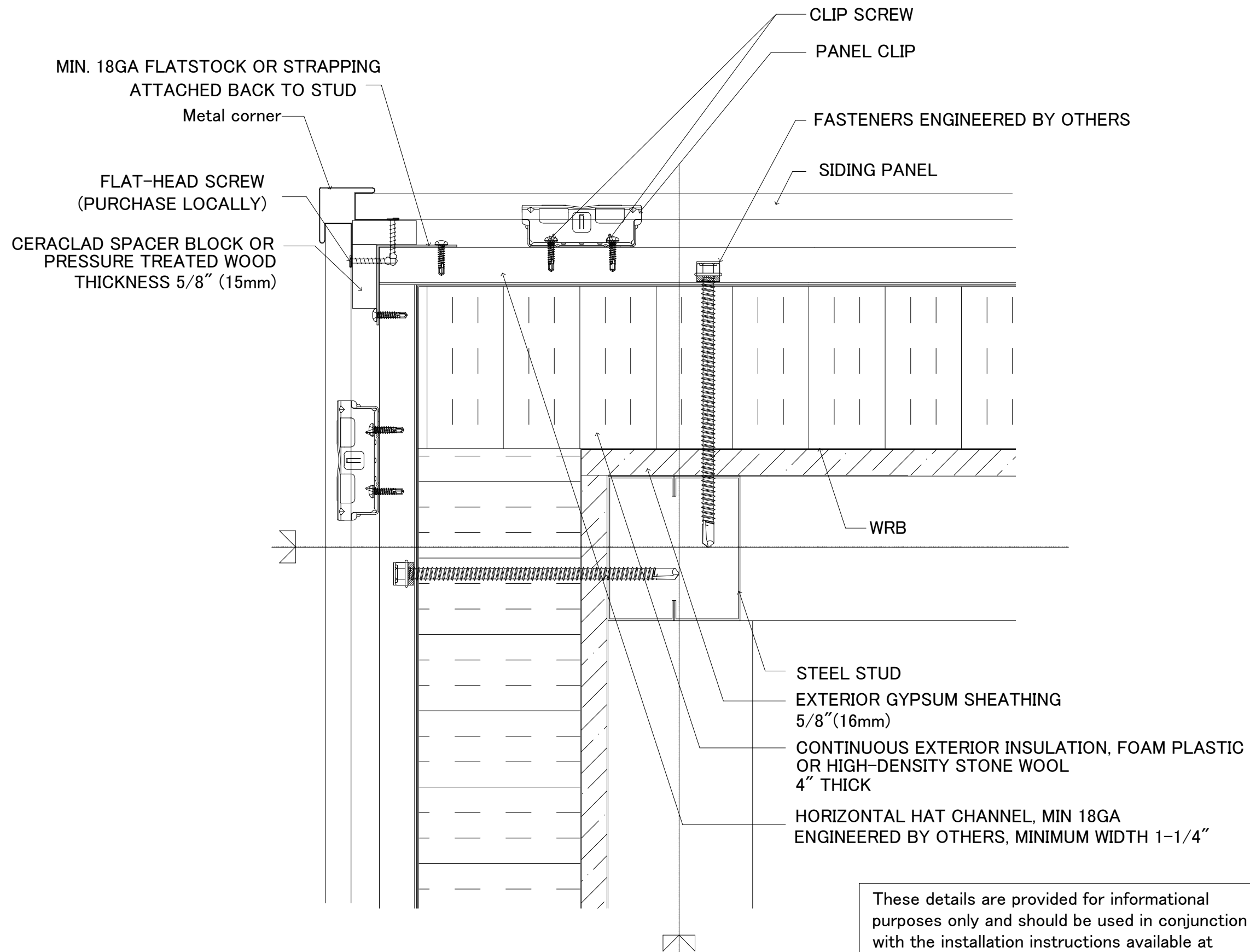
Note: This is a general recommendation. Responsibility for waterproofing details remains with the project envelope designer.

## 9 WINDOW AND DOOR JAMB (Hat Channel/Horizontal)



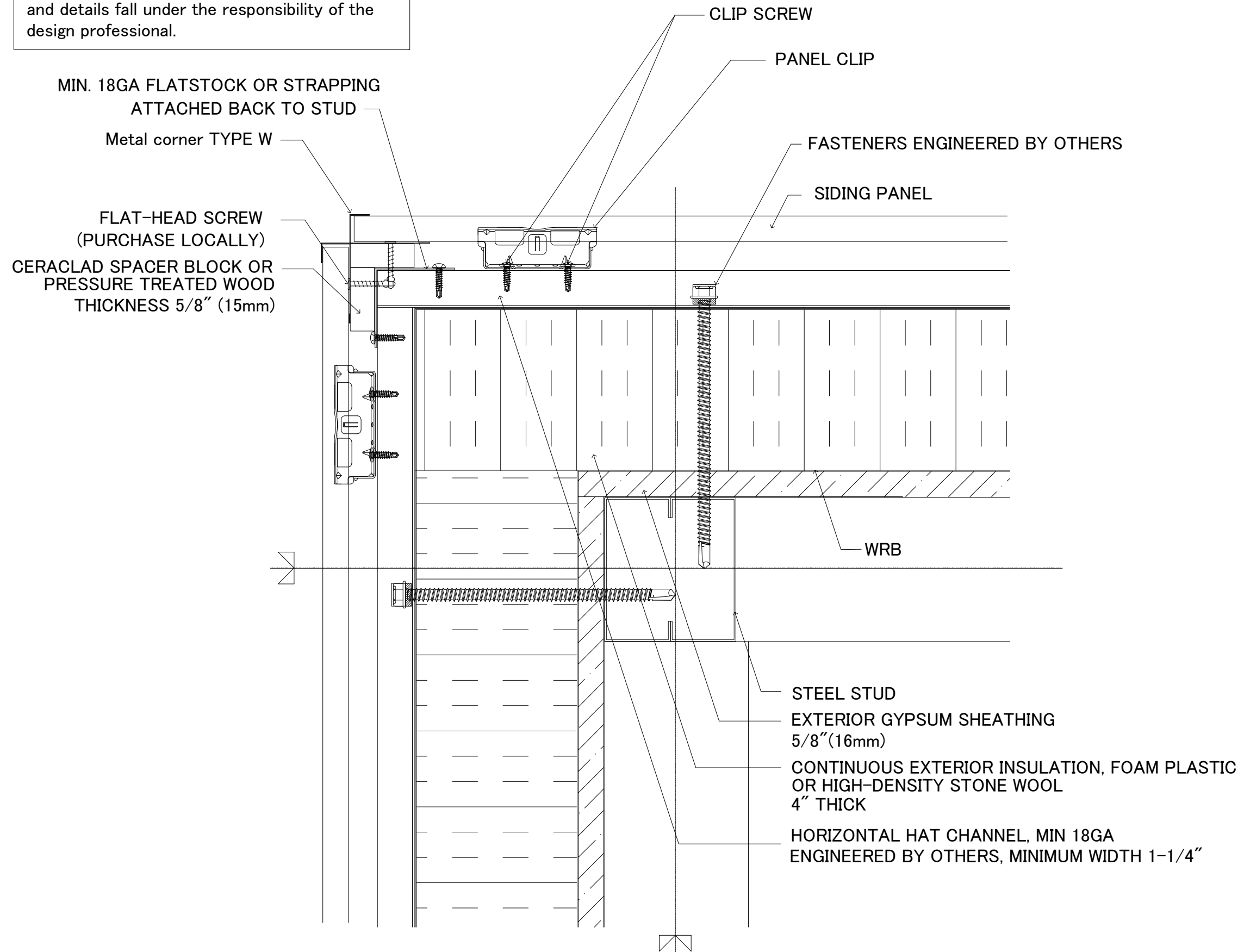
These details are provided for informational purposes only and should be used in conjunction with the installation instructions available at [www.ceraclad.com](http://www.ceraclad.com). Project-specific conditions and details fall under the responsibility of the design professional.





These details are provided for informational purposes only and should be used in conjunction with the installation instructions available at [www.ceraclad.com](http://www.ceraclad.com). Project-specific conditions and details fall under the responsibility of the design professional.

These details are provided for informational purposes only and should be used in conjunction with the installation instructions available at [www.ceraclad.com](http://www.ceraclad.com). Project-specific conditions and details fall under the responsibility of the design professional.



These details are provided for informational purposes only and should be used in conjunction with the installation instructions available at [www.ceraclad.com](http://www.ceraclad.com). Project-specific conditions and details fall under the responsibility of the design professional.

