

“H” Controlair® Valves
H-4 CONTROLAIR® VALVE and H-4-G CONTROLAIR® VALVE
H-4 CONTROLAIR® VALVE

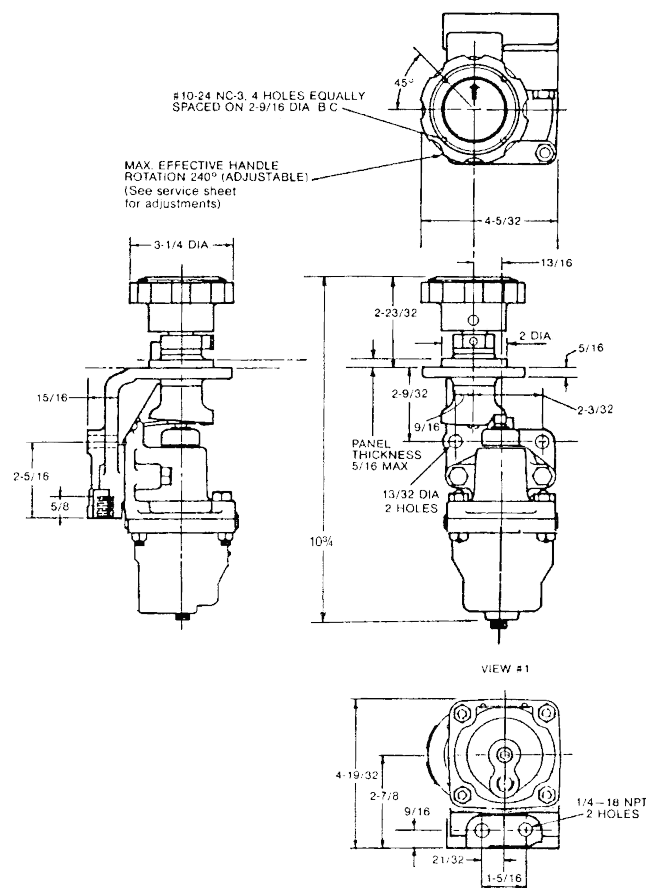

The H-4 CONTROLAIR Valve is a knob operated, 3-way pressure regulating valve. Arranged for panel mounting, this valve gives fine, vernier type pressure control in one delivery line. The knob holds in all positions and has adjustable stops to limit maximum and minimum travel.

Clockwise rotation of the knob increases pressure in the standard models. Opposite knob action is available. Approximate weight: 5½ lbs. (2.5 Kg)

ORDERING INFORMATION

New Part No.	Old Part No.	Pressure Range psi (bar)
R431002818	P -050967-00001	0-65 (0-4.5)
R431002819	P -050967-00002	0-100 (0-6.9)
R431002820	P -050967-00003	0-125 (0-8.6)
R431002821	P -050967-00004	0-150 (0-10.3)
R431002822	P -050967-00008	0-30 (0-2.1)
R431002885 (1)	P -051173-00001	0-65 (0-4.5)
R431002886 (1)	P -051173-00002	0-100 (0-6.9)

- (1) Counterclockwise rotation increases pressure.
- (2) Consult factory for requirements and part numbers not shown.


H-4-G CONTROLAIR® VALVE

This design is similar to the H-4 CONTROLAIR except the spring housing area is sealed and a control signal can be introduced under the diaphragm through the tapped exhaust port. The delivery pressure is then biased (decreased) by this signal. The bias signal must always be lower than the output signal called for by the knob travel.

ORDERING INFORMATION

New Part No.	Old Part No.	Bias Range psi (bar)
R431002962	P -052035-00001	0-65 (0-4.5)
R431002963 (1)	P -052035-00002	0-65 (0-4.5)

- (1) 9/16-18 Standard Thread Ports

#10-24, UNC-28, 4 HOLES
EQUALLY SPACED ON
2.56 B.C. DIA.

CLOCKWISE ROTATION OF THE
KNOB INCREASES PRESSURE
UNLESS OTHERWISE SPECI-
FIED 240° MAX. EFFECTIVE
KNOB ROTATION (adjustable)

