

# stud horse mountain house



balance associates, architects



# stud horse mountain house



entry

This 3,500 square foot home is located at the end of a ridge overlooking the Methow Valley in Northeast Washington State. The house is arranged around a courtyard to provide a sheltered area from the exposed location on the ridge. It is separated into four parts, each orientated to different views and solar exposure. A large screen porch forms a connection between the living and sleeping wings to provide an insect free outdoor dining and living space. The shed roofs with cathedral ceilings slope with the contours of the hill to reduce the overall scale and impact to the structure as it is viewed from the valley floor below. The house is built from an insulated concrete form system and uses many recycled and sustainable materials and products. Much of the wood used throughout the house was reclaimed and resawn into sizes needed for the construction. Healthy home principles were used in specifying finishes and products used throughout the residence.

**Balance Associates, Architects** works throughout the West on unique, finely crafted, architecture and interiors. Our projects range in scope from small cabins, to affordable houses, to multi-million dollar custom homes. Our strengths are our integration of the building to its site, our attention to detail, our enthusiasm, and our commitment to get you the best possible project. We are small by design which allows us to provide our clients highly personalized service and we have a strong background in energy efficient, sustainable architecture.

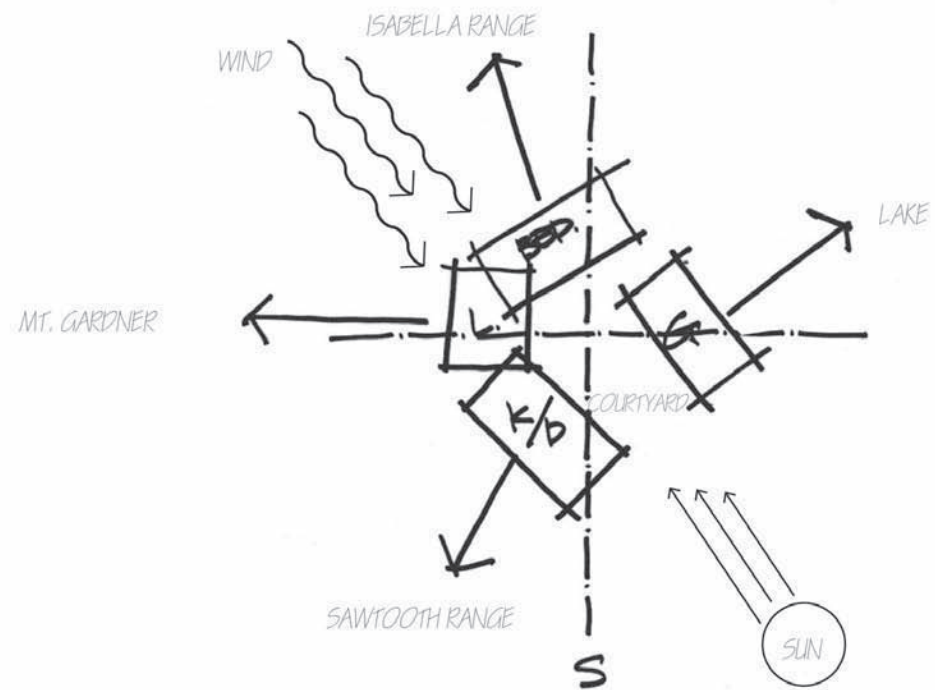
206-322-7737  
80 Vine Street, Suite 201  
Seattle, WA 98121  
[www.balanceassociates.com](http://www.balanceassociates.com)

© Copyright 2007, Balance Associates, Architects





south elevation



concept

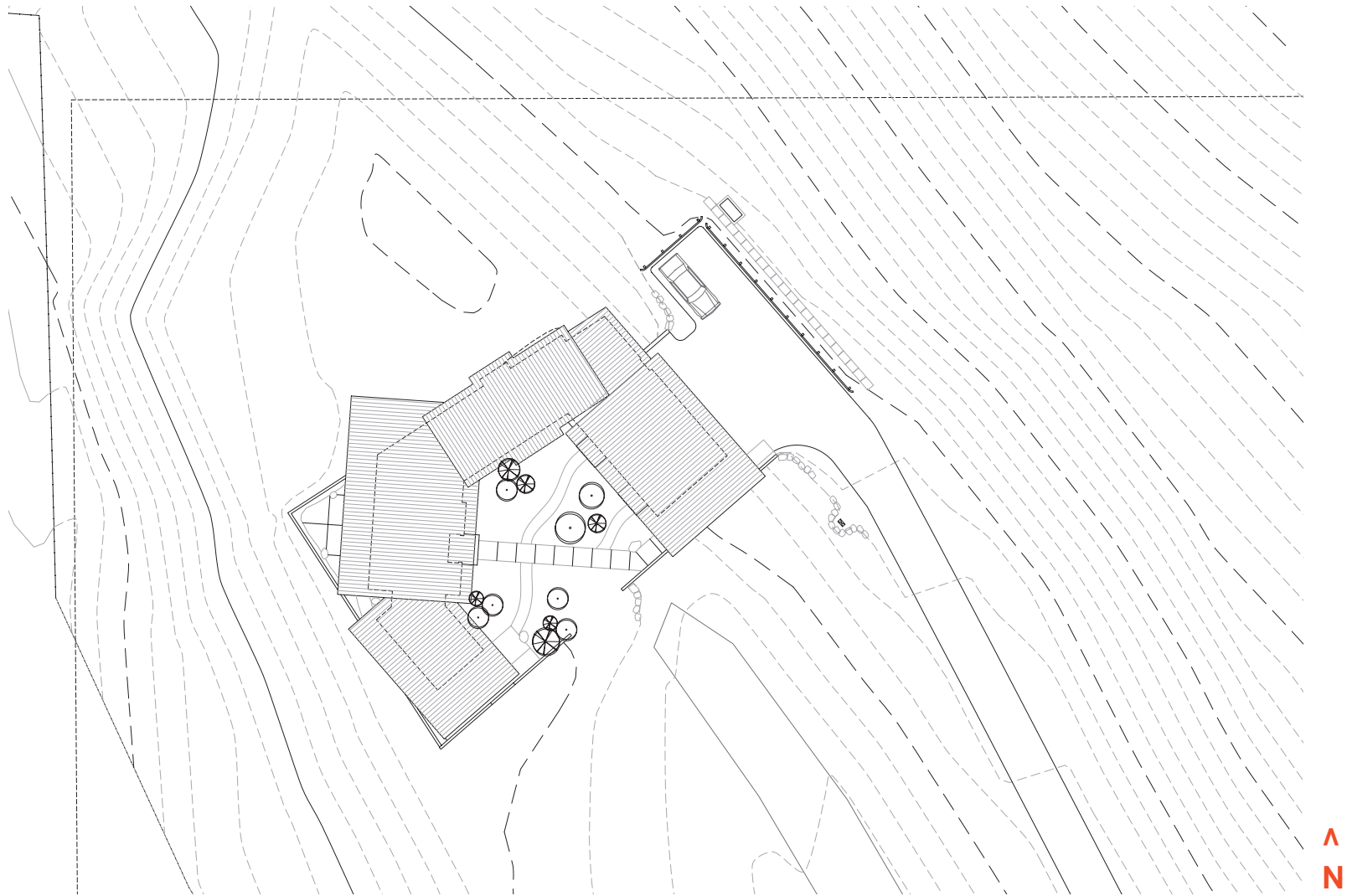


southeast elevation



southwest elevation





site plan





southeast elevation-



entry courtyard





entry stairs

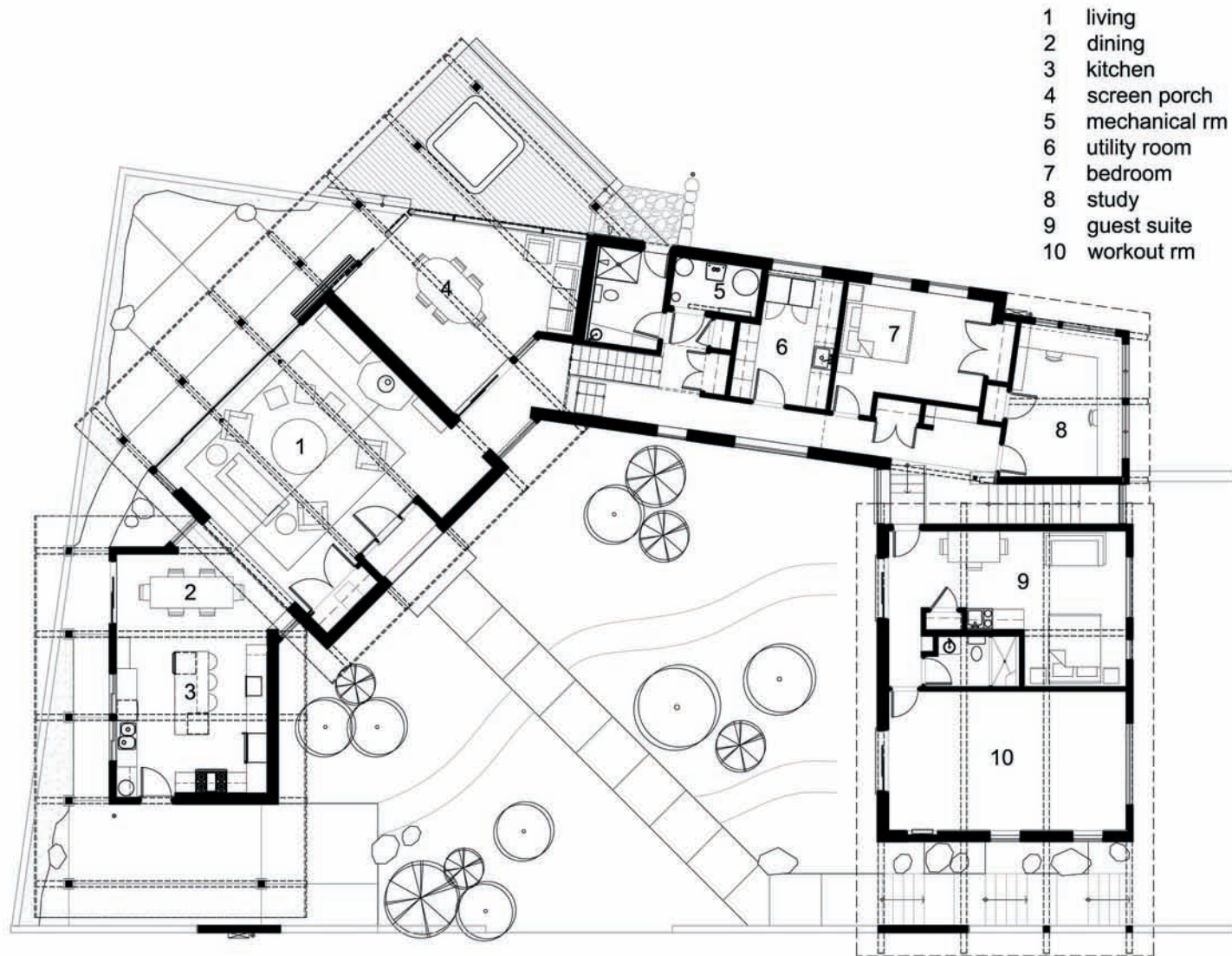


south east courtyard elevation



east courtyard elevation





main floor plan



living room





living room





living room



living /dining room





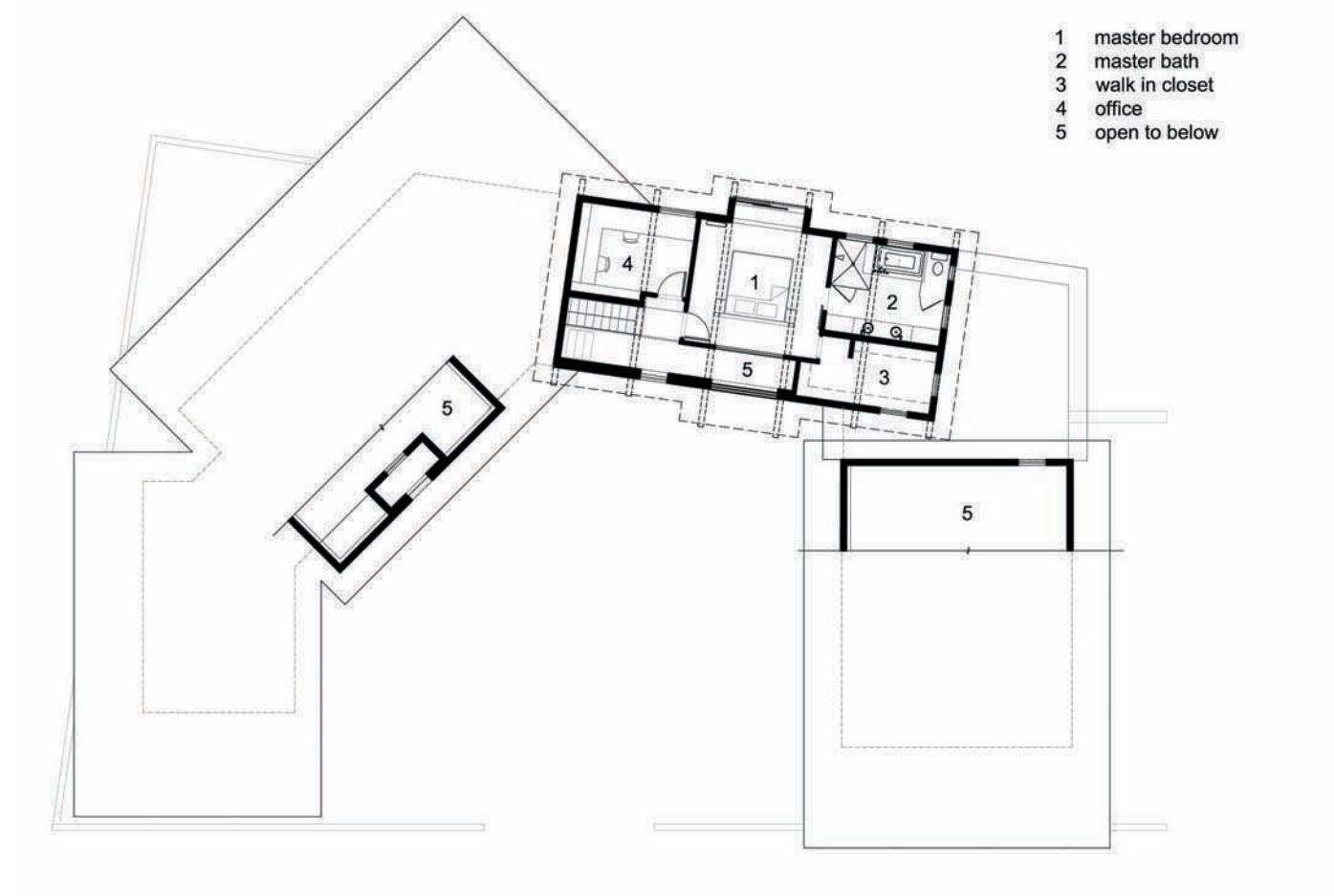
kitchen



screen porch







second floor plan





master bedroom suite





office



Credits:

**Architect:**

Balance Associates, Architects  
Tom Lenchek AIA, principal  
Scott LaBenz AIA, project architect

**Structural Engineer:**

F.L. Cooley & Associates

**Mechanical Engineer:**

Ecotope Inc.

**General Contractor:**

Rhinehart Construction

**Interior Design:**

Jennifer Randall & Associates

**Landscape:**

Windy Valley Landscaping

**Photographer:**

Steve Keating

