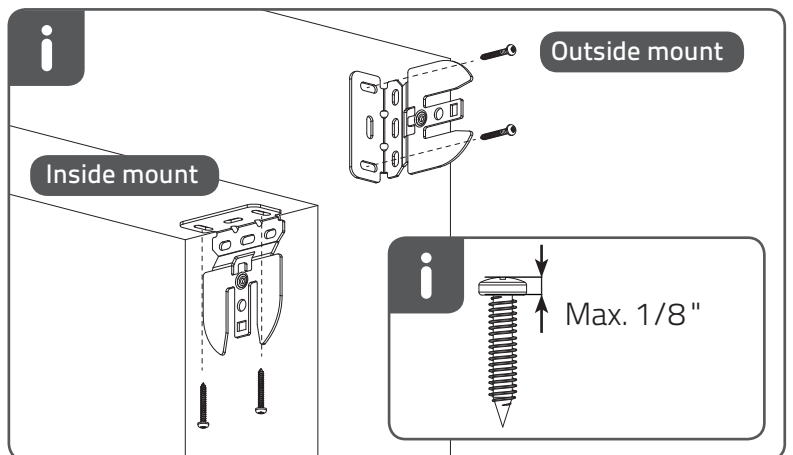
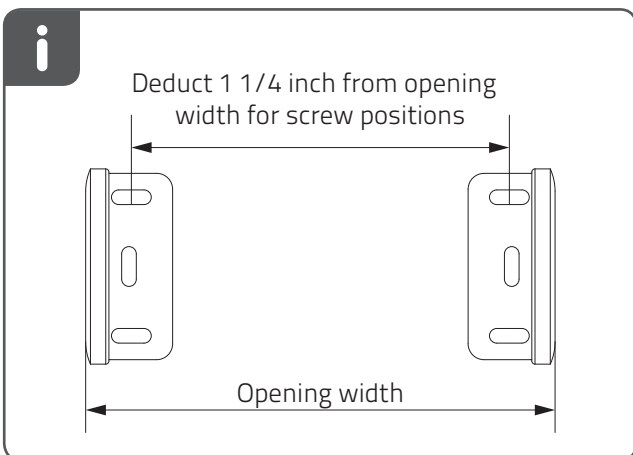
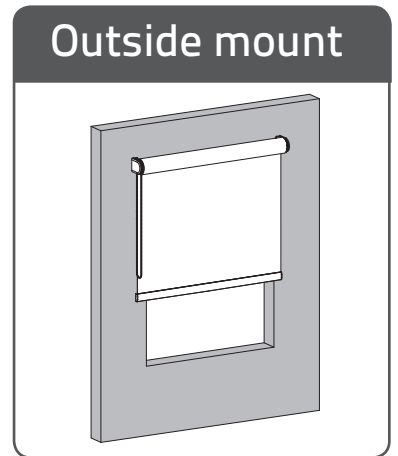
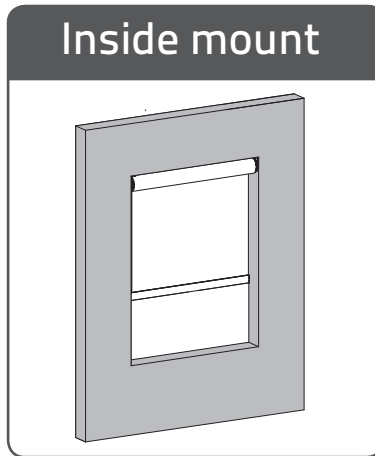
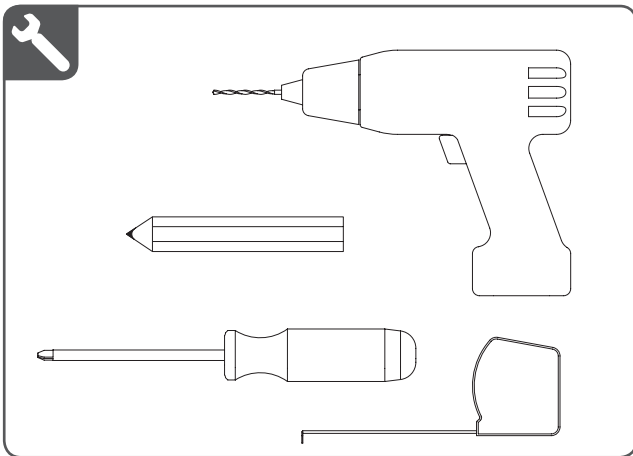
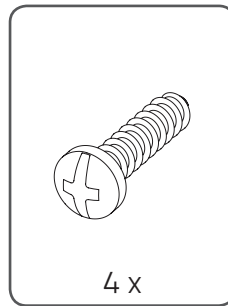
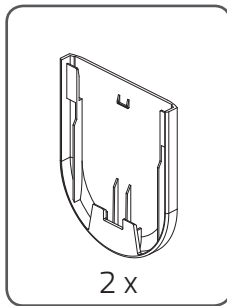
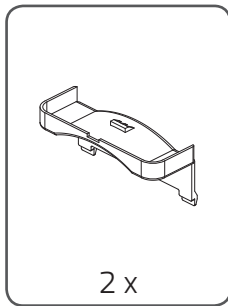
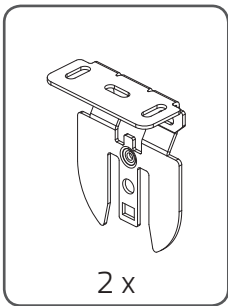
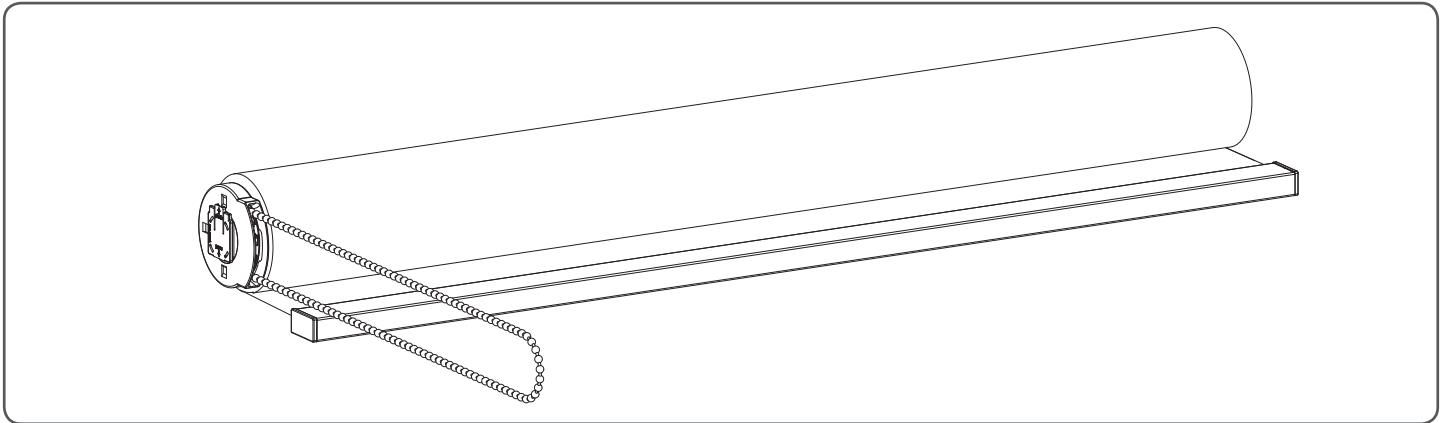


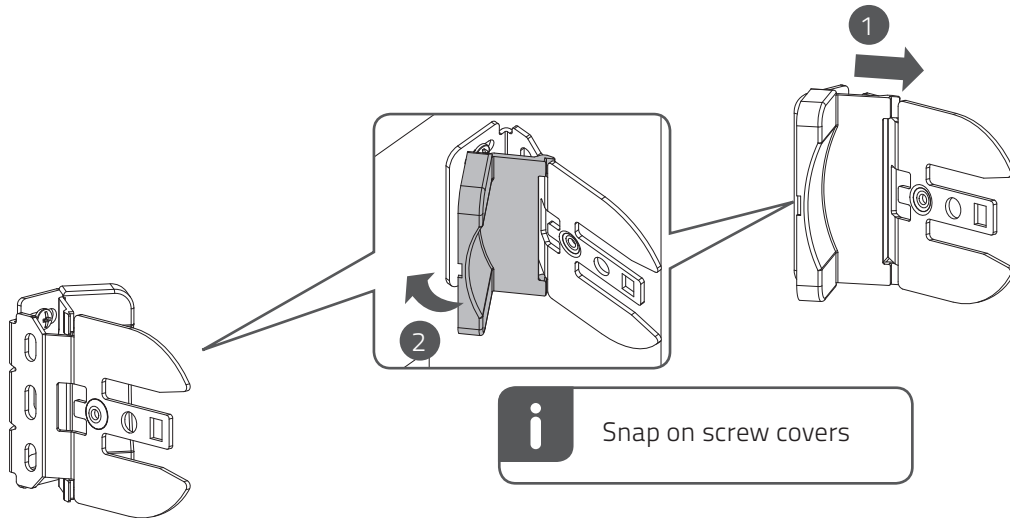
Bracket Chain



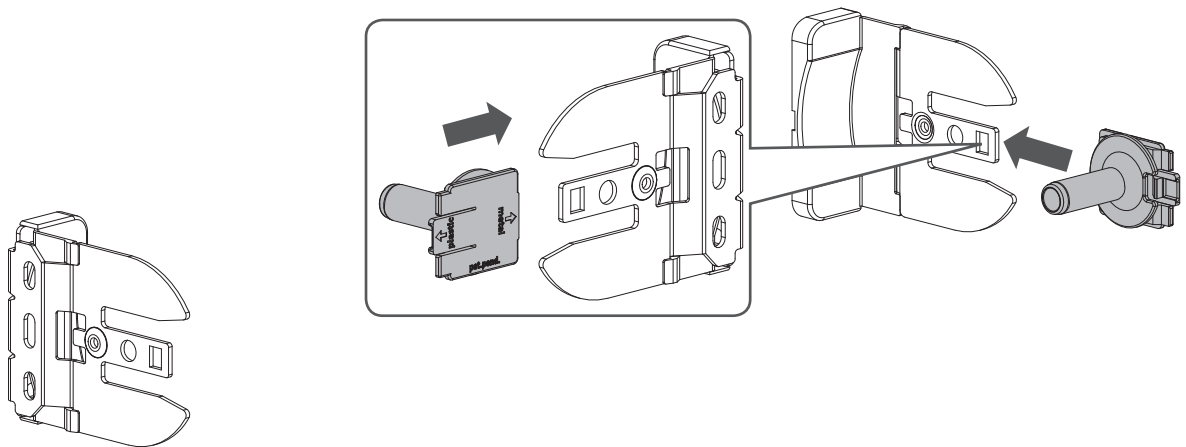
MN180016_20180713

Installation

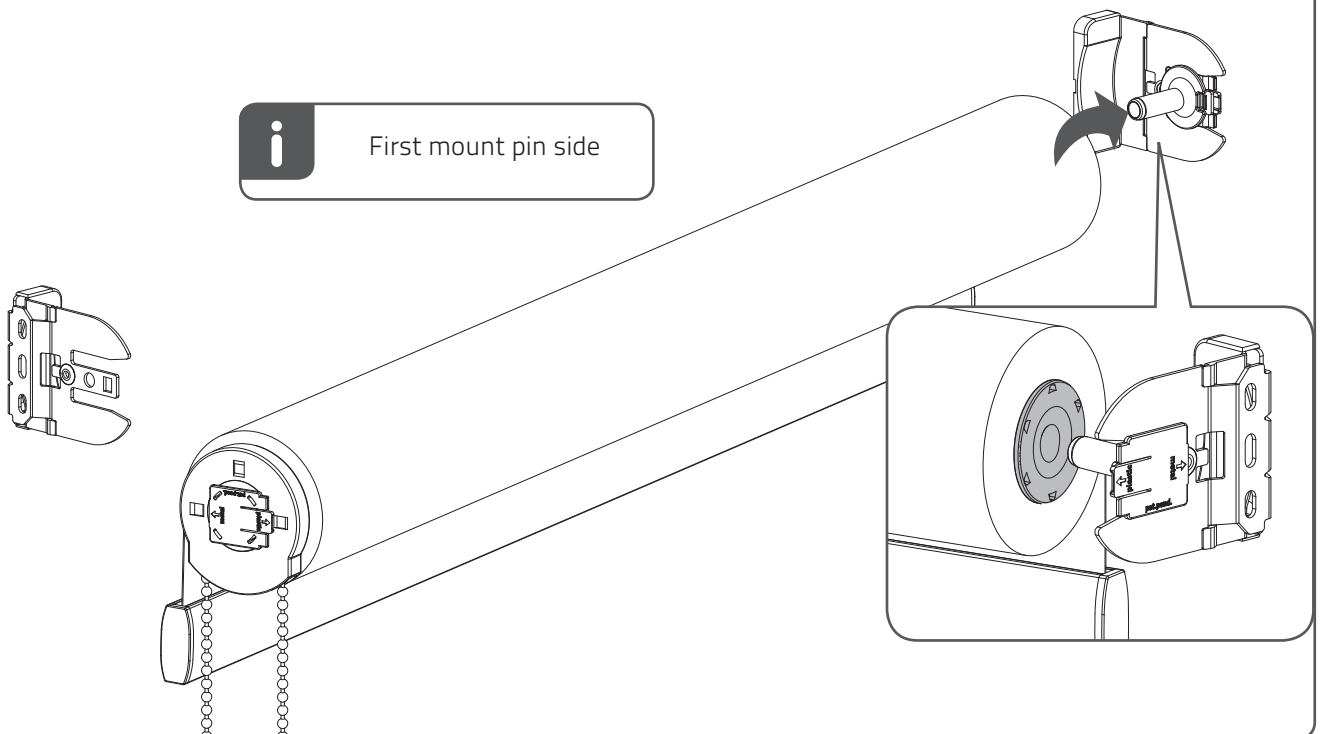
1



2



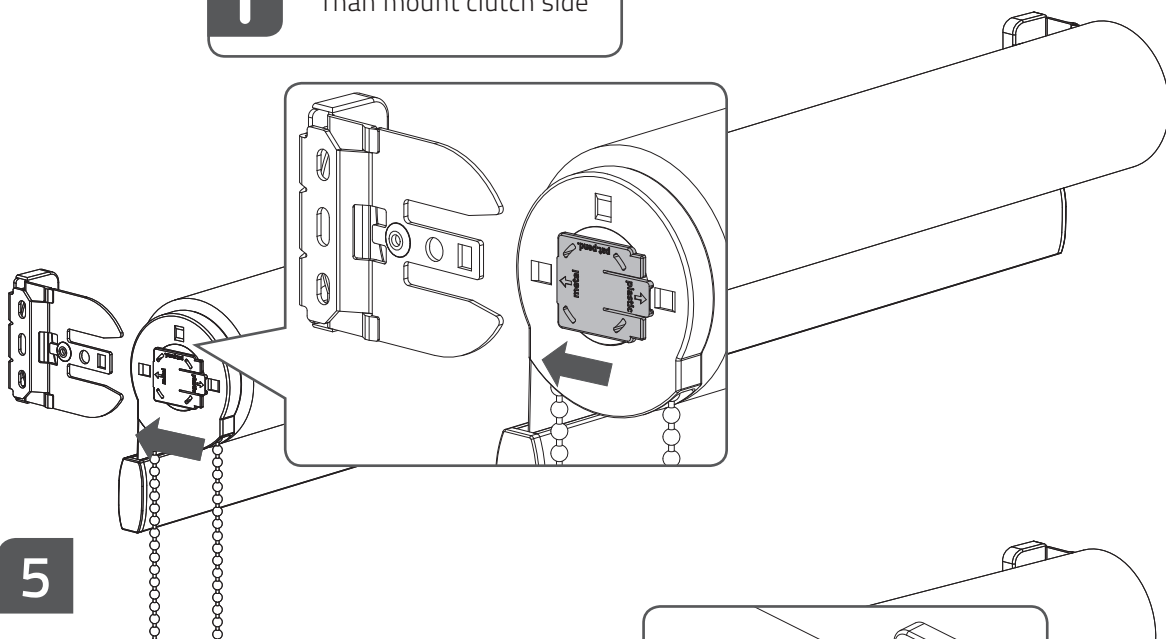
3



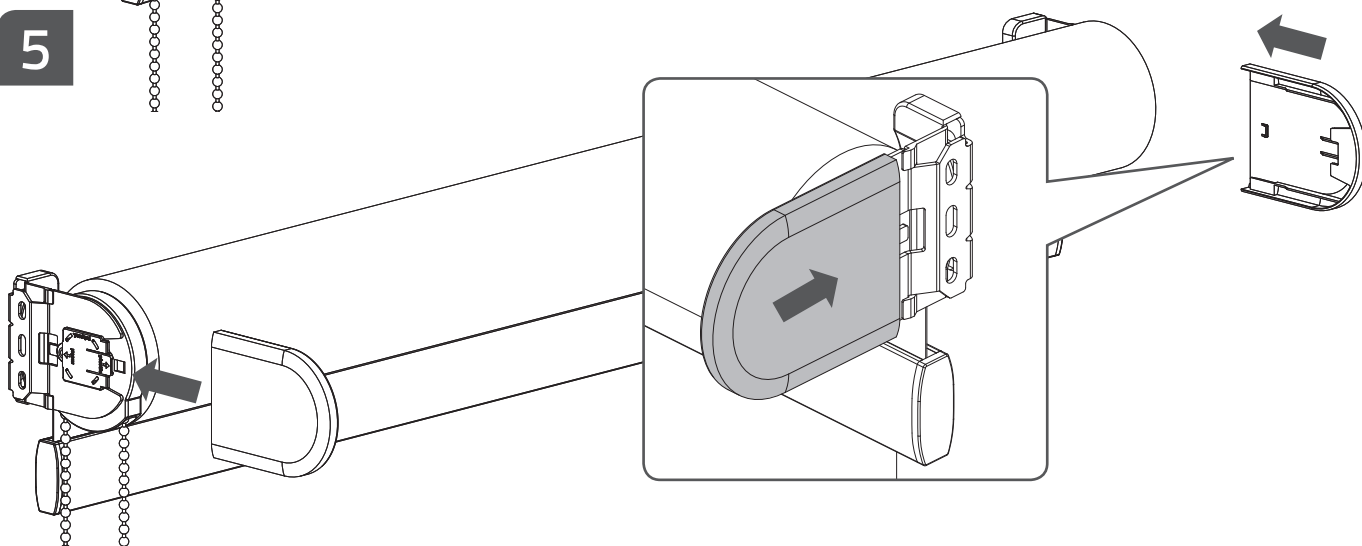
4



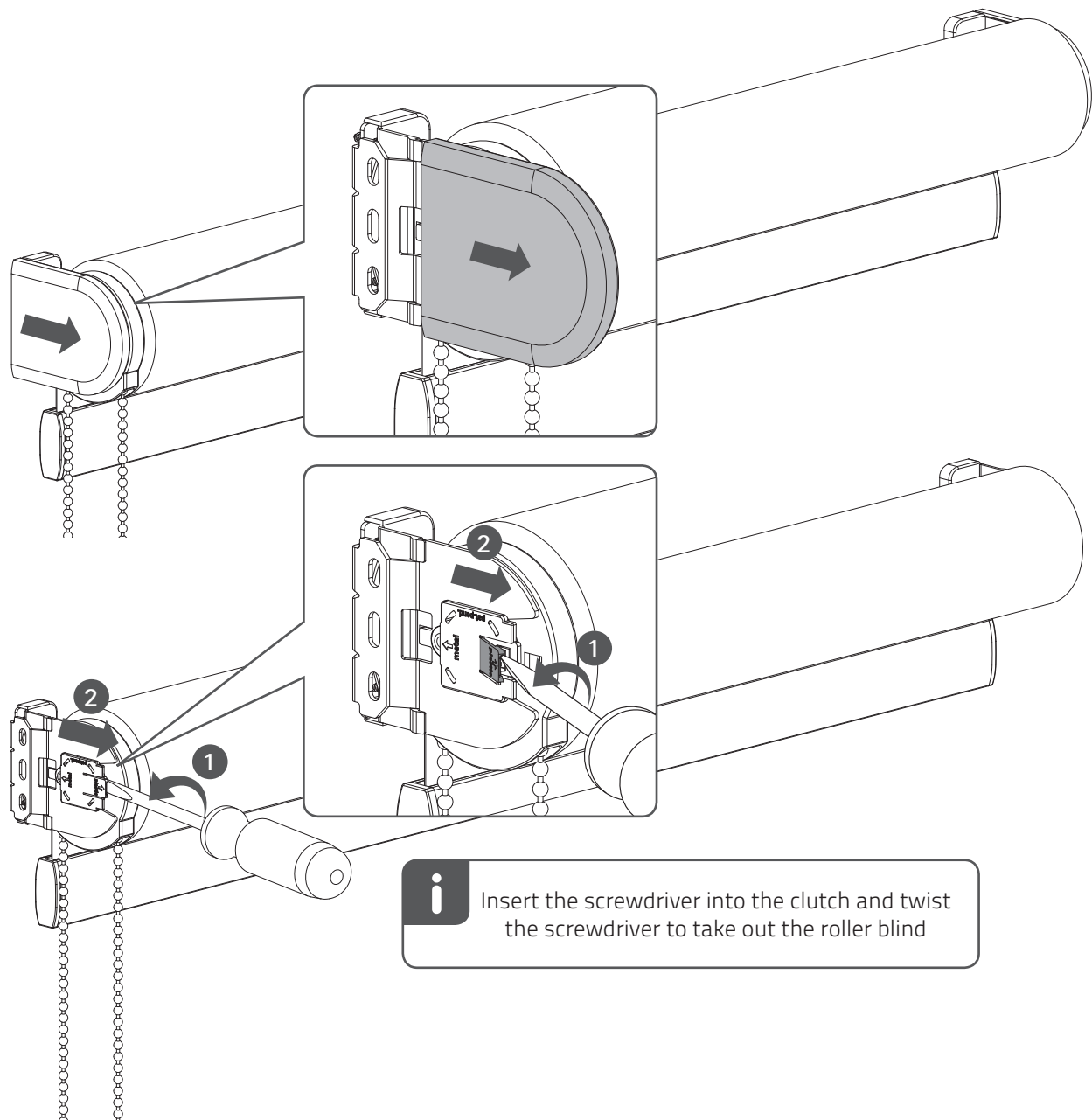
Than mount clutch side



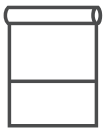
5



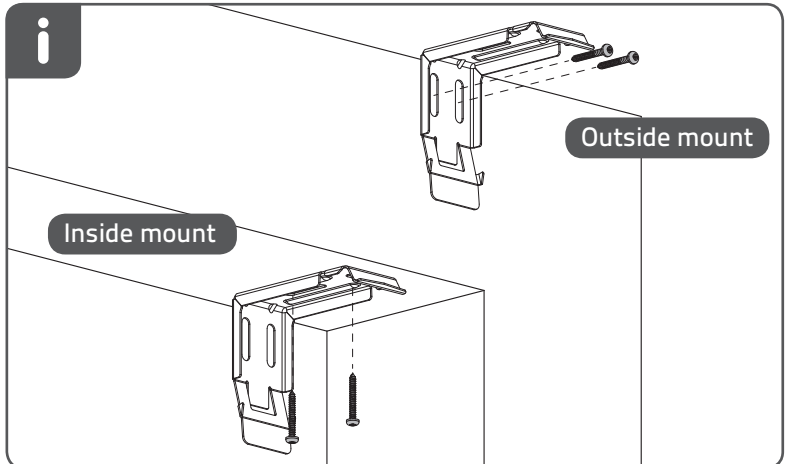
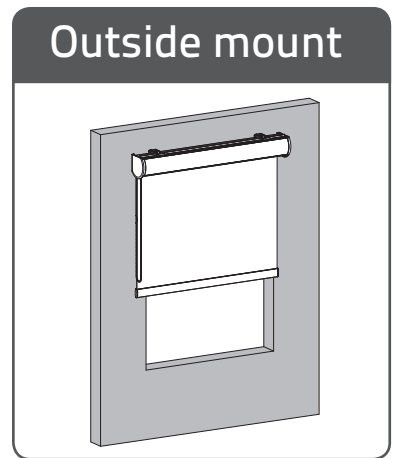
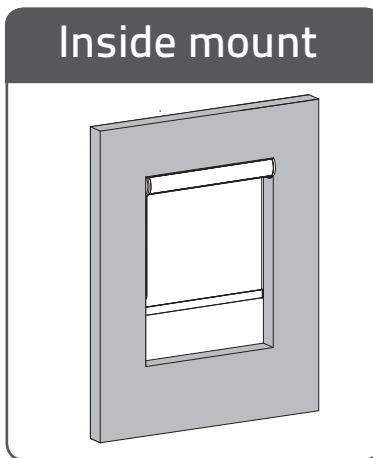
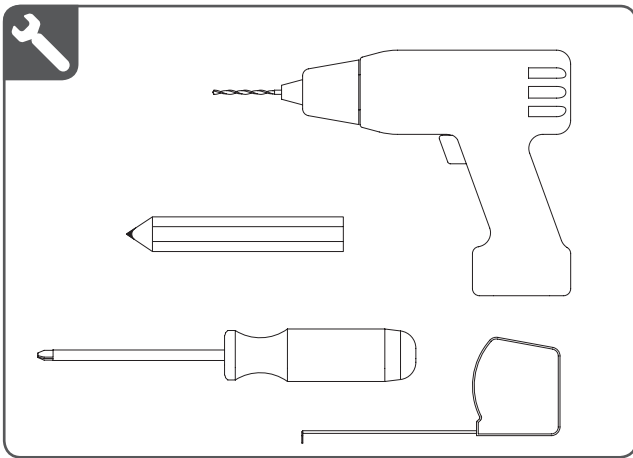
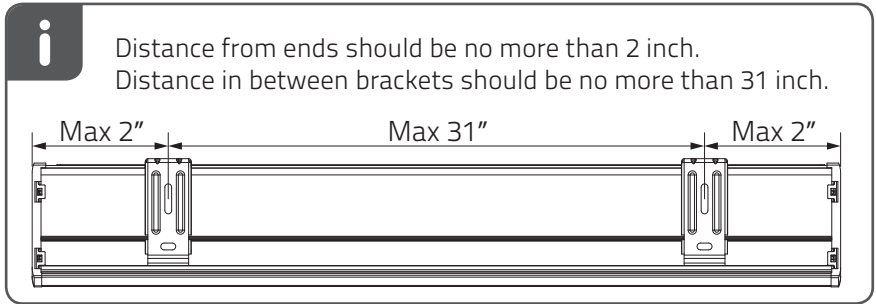
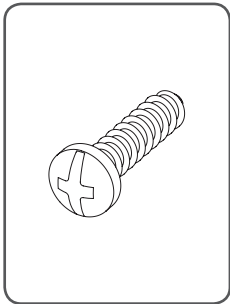
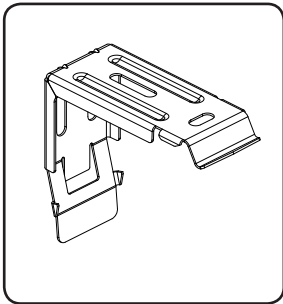
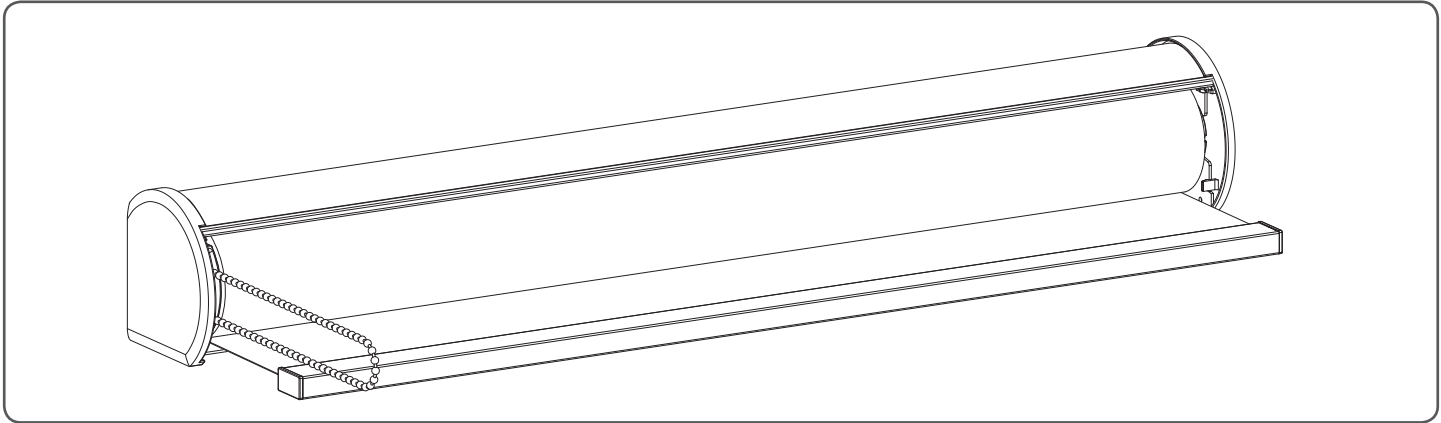
Removal



Do not go back to store for support and replacement parts,
but call 1-800-575-2756
Mon-Fri 8am to 11pm EST
Sat-Sun 10am to 7pm EST



Semi-Open Chain

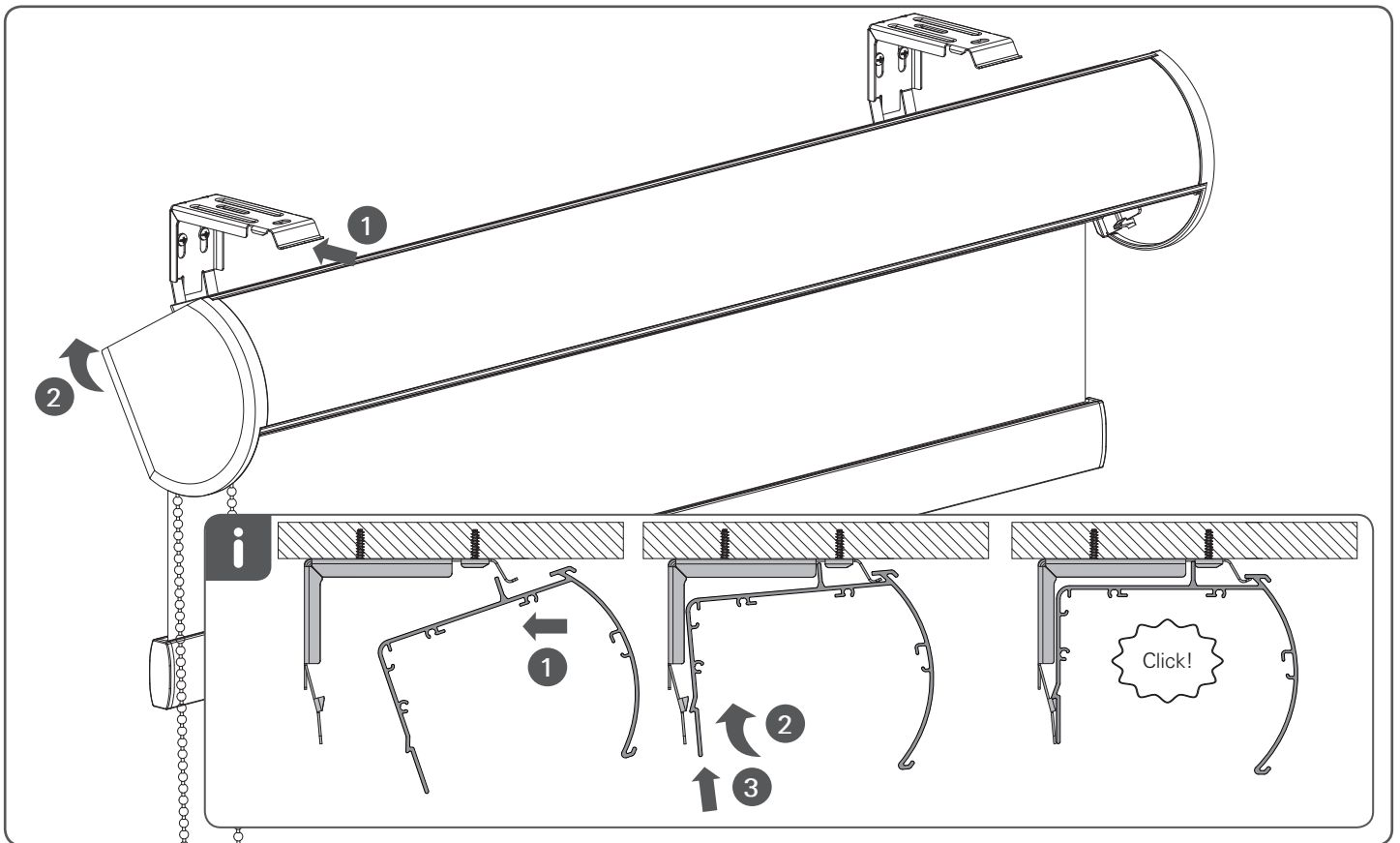


MN180017_20180713

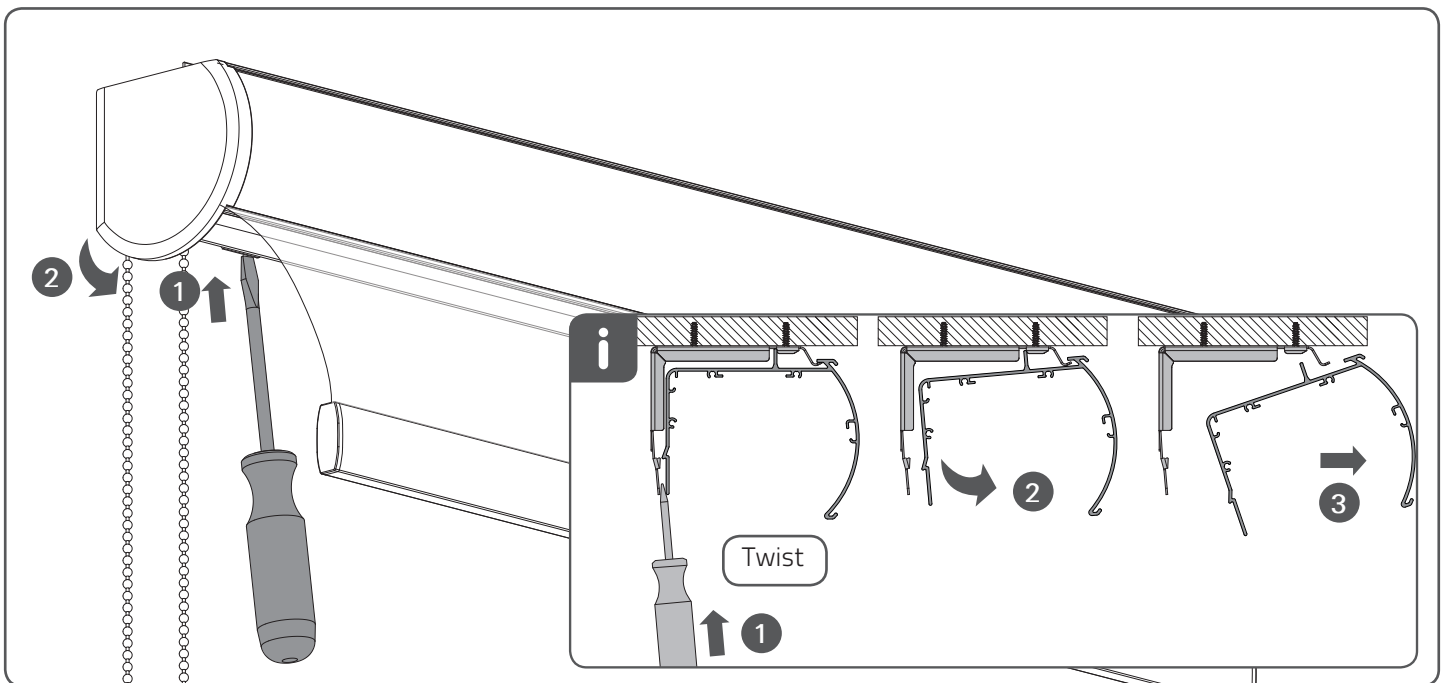
Fabrication Florida Venture
6600 NW 12th Avenue, Suite 201
Fort Lauderdale, FL 33309

COCOON
by Coulisse

Installation

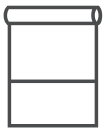


Removal

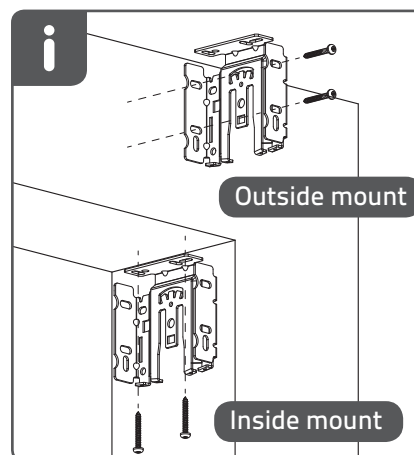
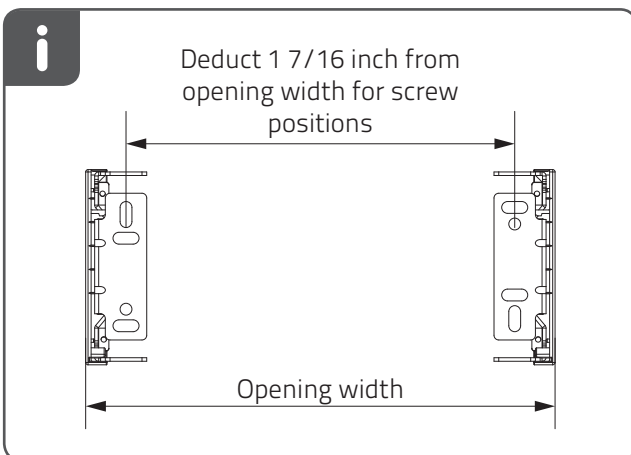
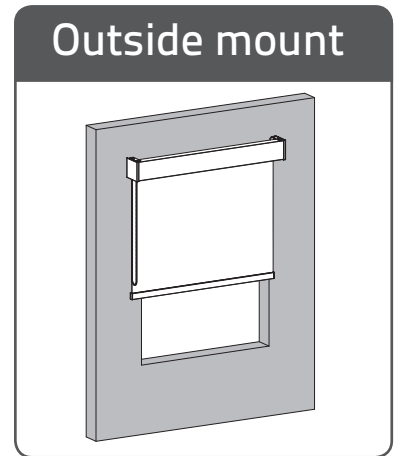
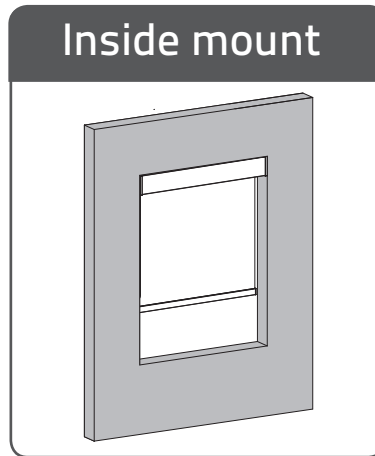
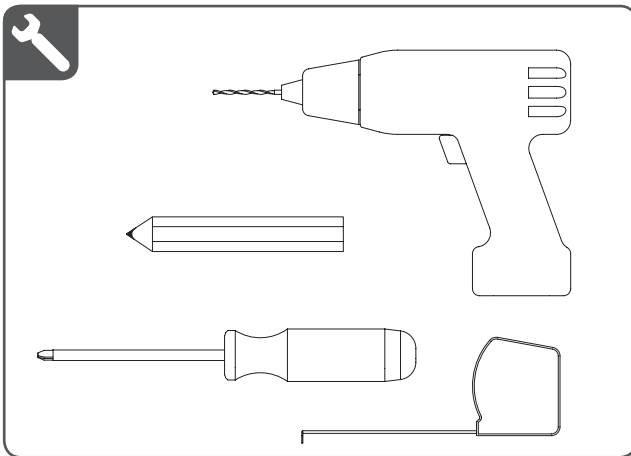
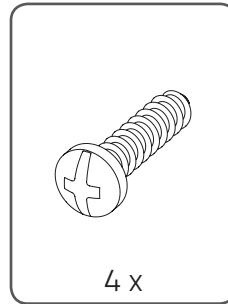
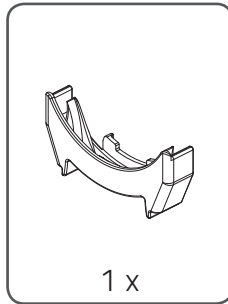
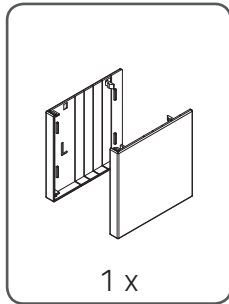
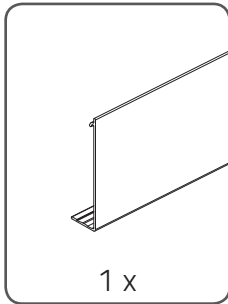
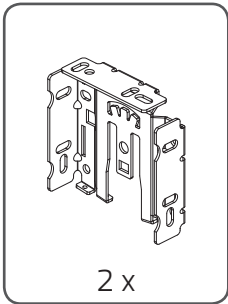
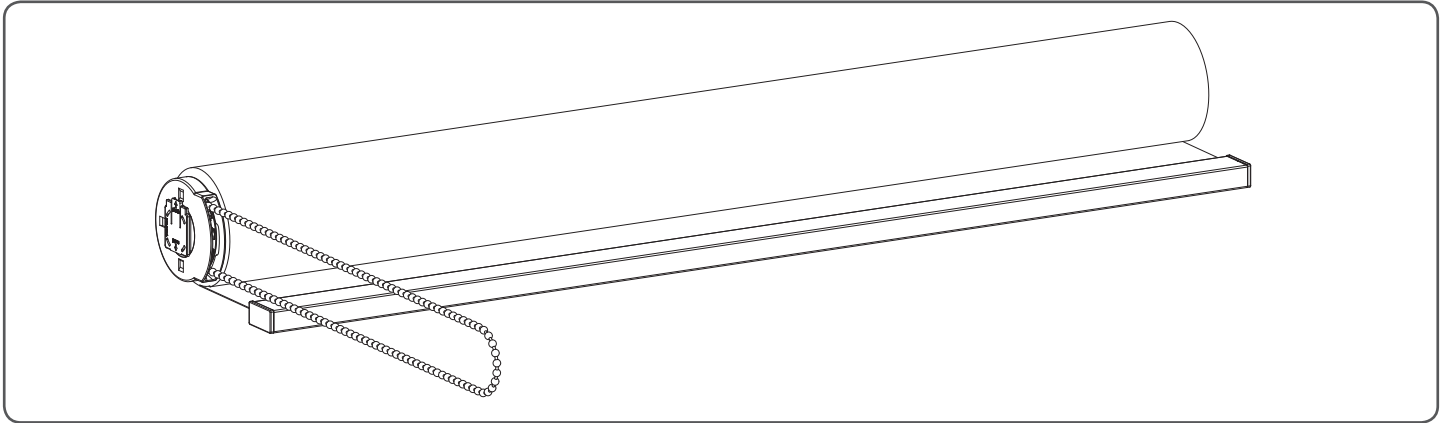


Do not go back to store for support and replacement parts,
but call 1-800-575-2756
Mon-Fri 8am to 11pm EST
Sat-Sun 10am to 7pm EST

COCOON
by Coulisse



Fascia Chain



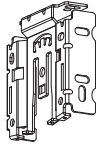
MN180019_20180713

Fabrication Florida Venture
6600 NW 12th Avenue, Suite 201
Fort Lauderdale, FL 33309

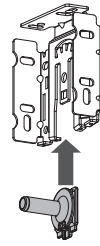
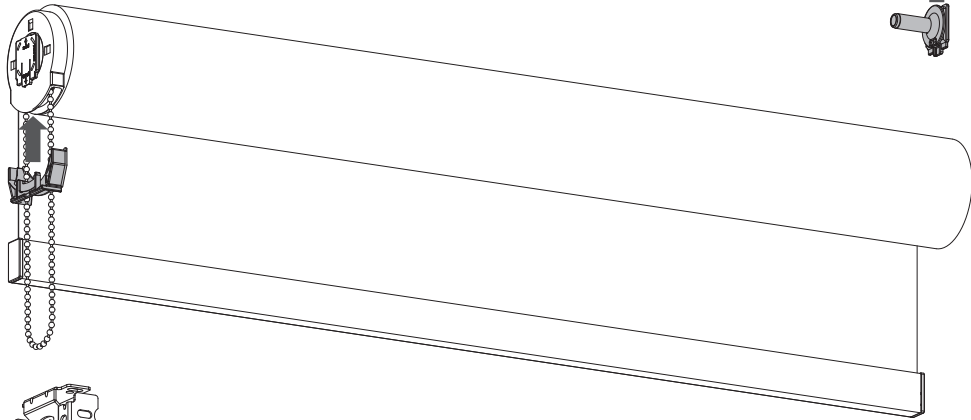
COCOON
by Coulisse

Installation

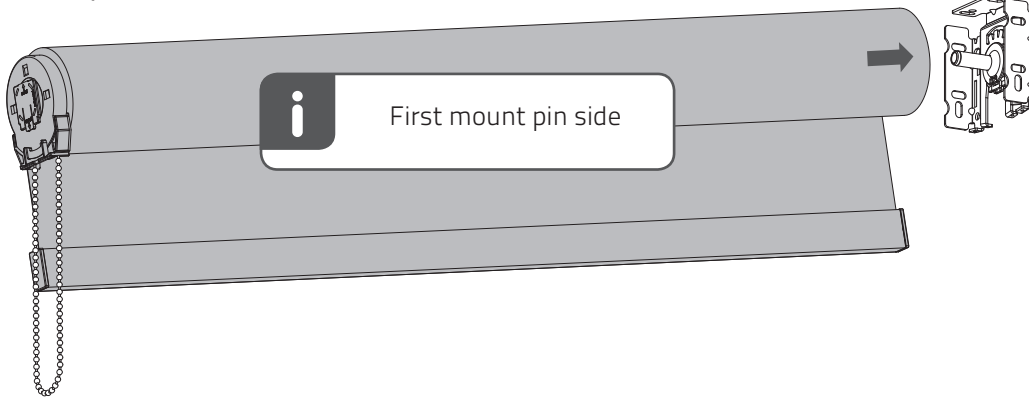
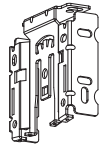
1



2

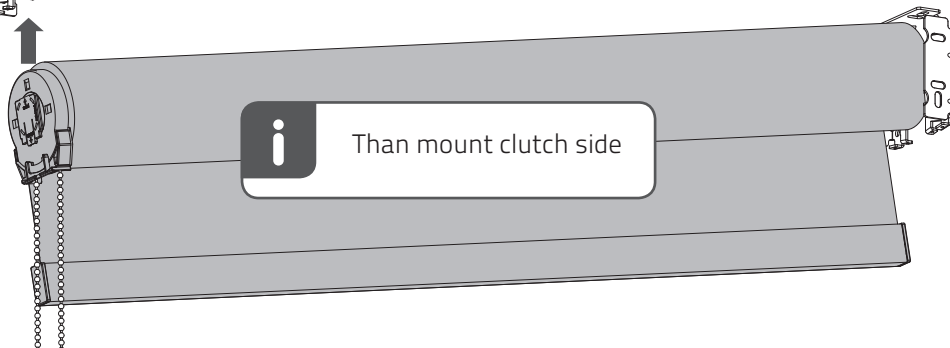
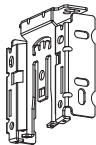


3



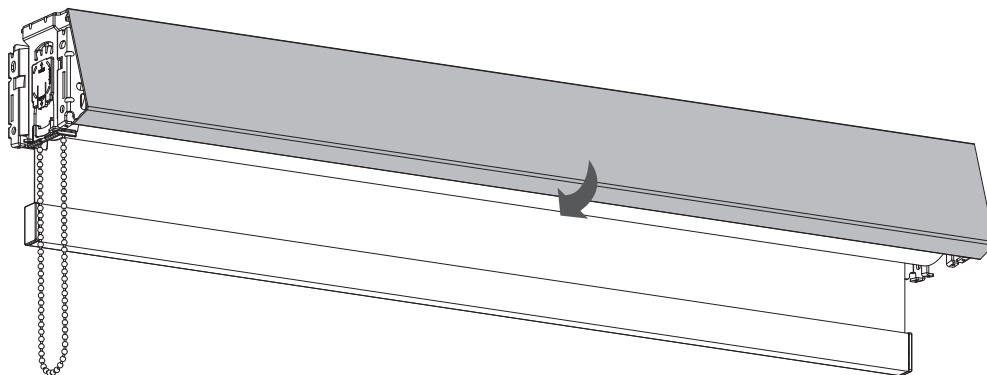
First mount pin side

4

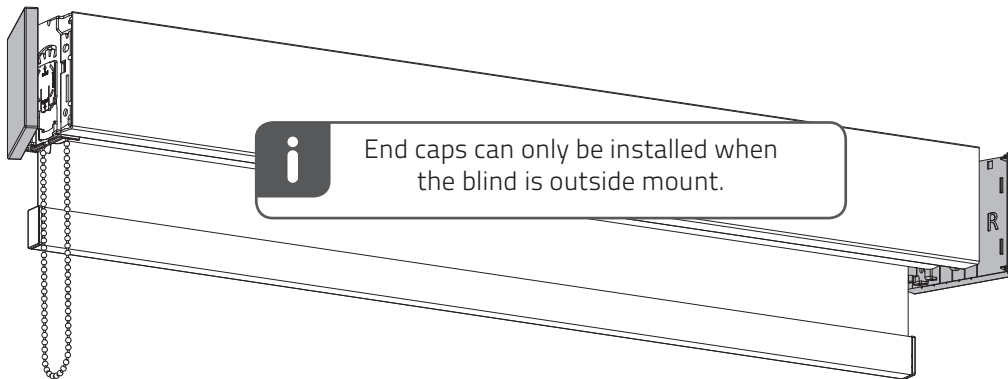


Than mount clutch side

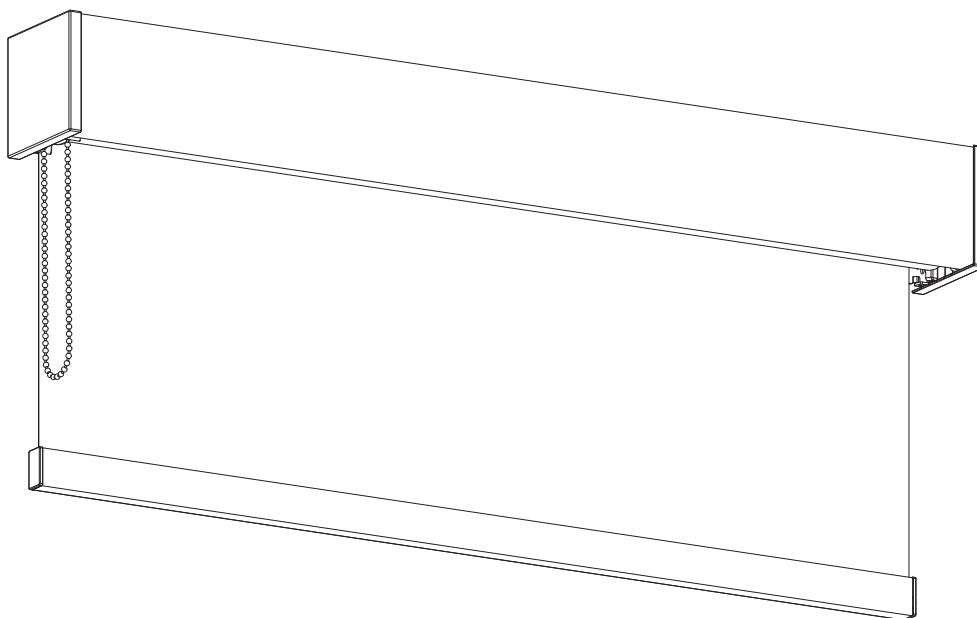
5



6



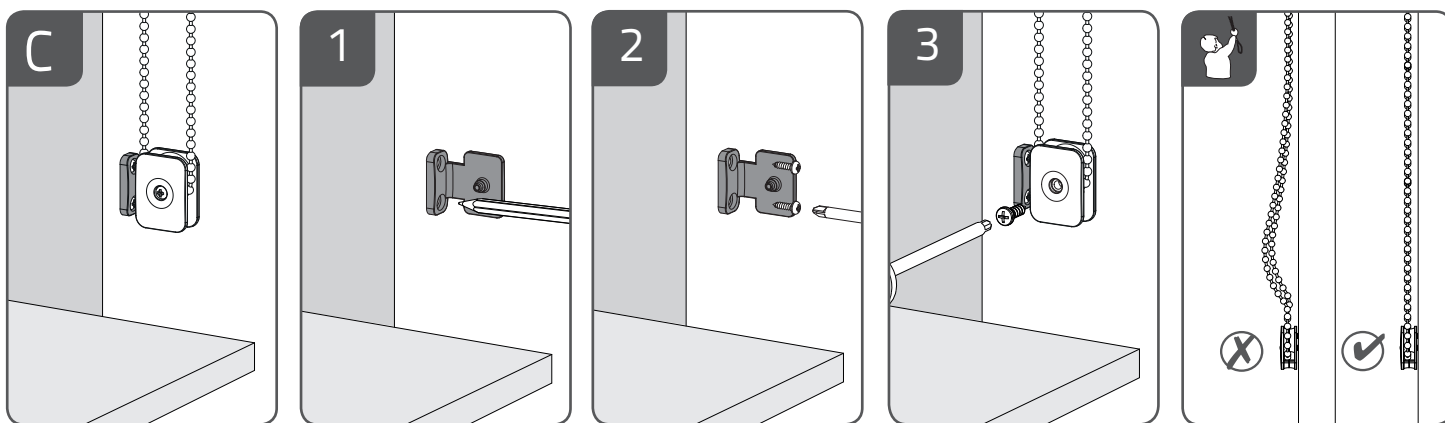
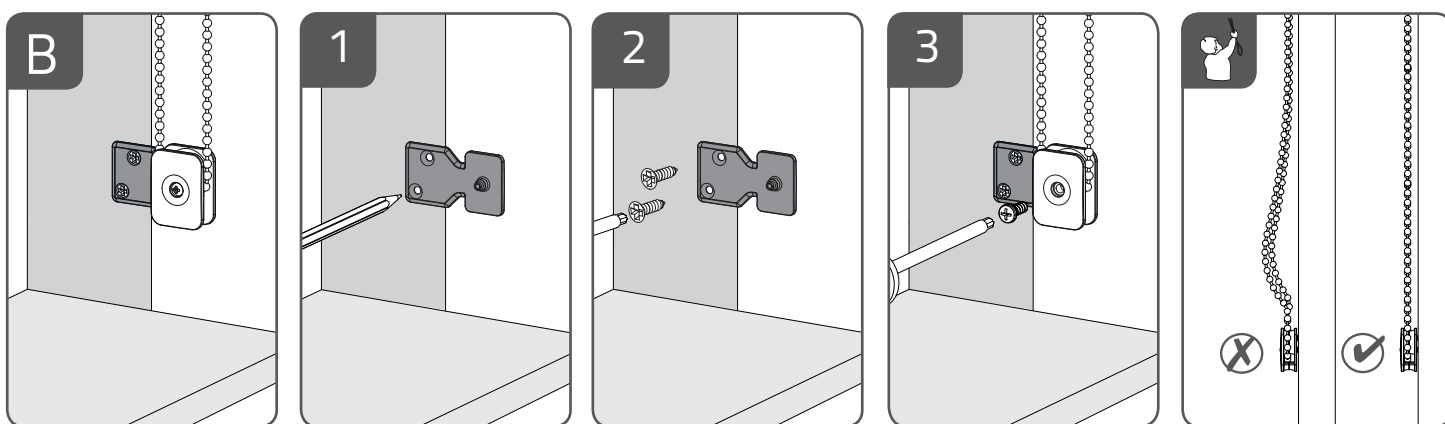
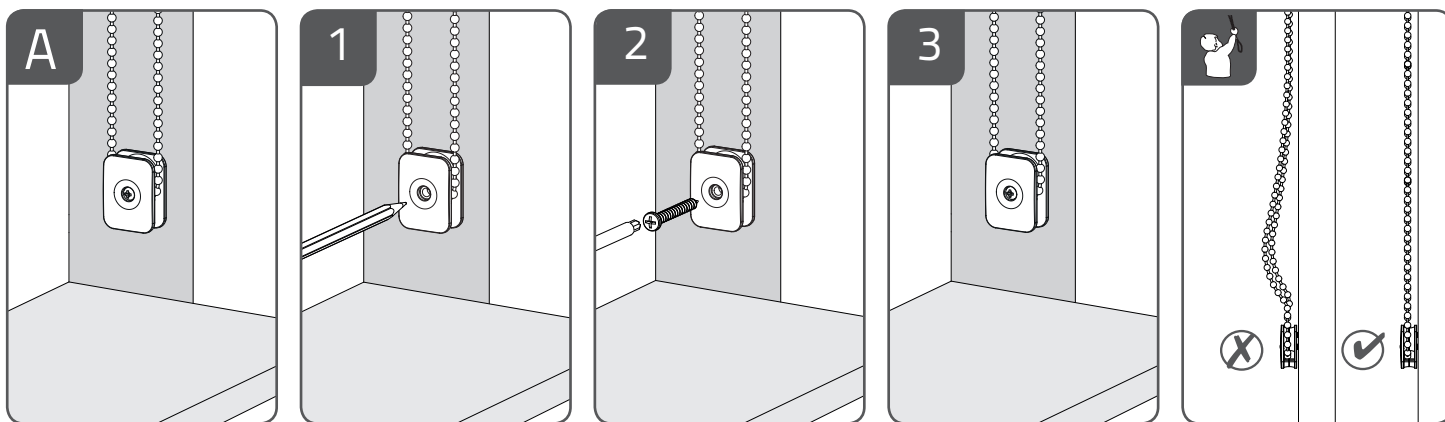
7

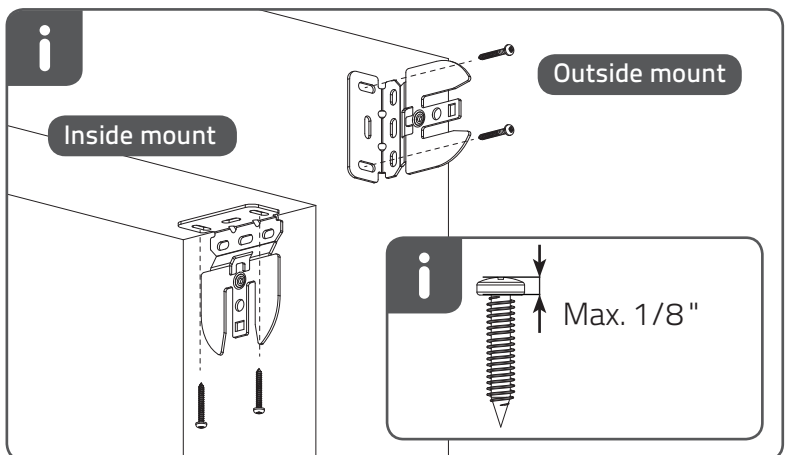
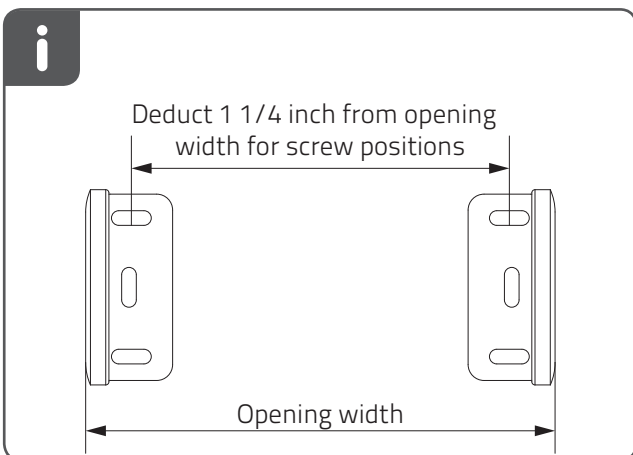
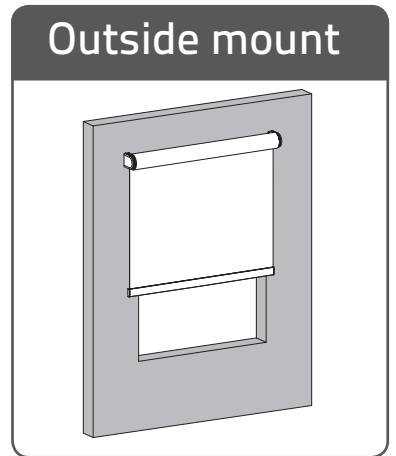
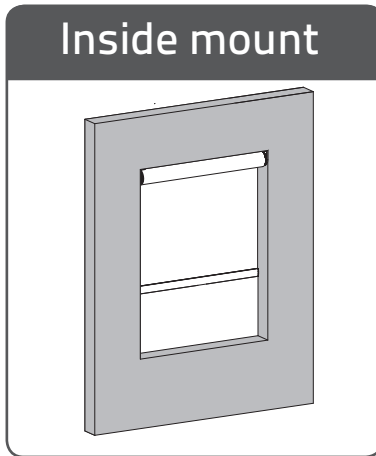
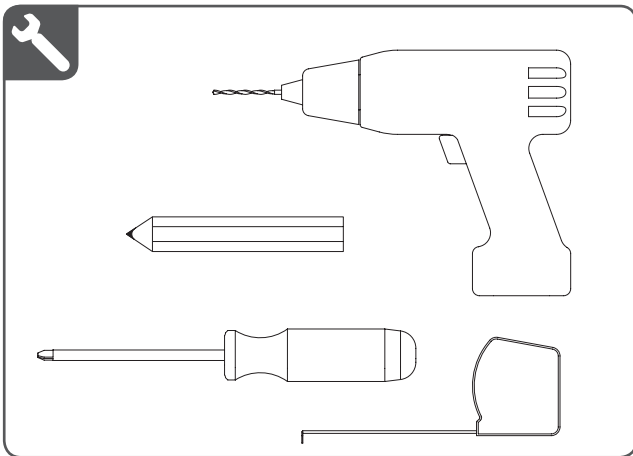
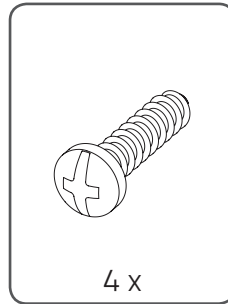
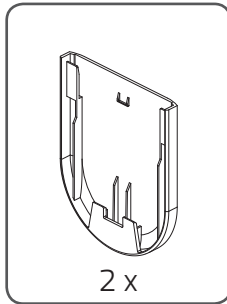
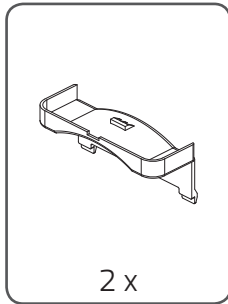
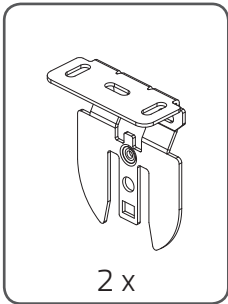
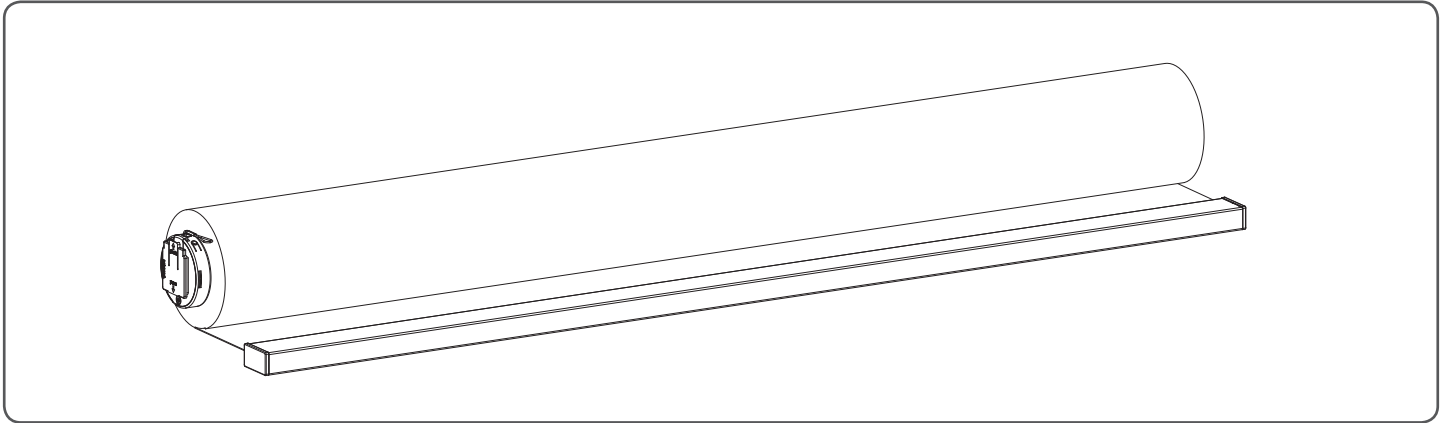
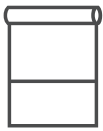


Do not go back to store for support and replacement parts,
but call 1-800-575-2756
Mon-Fri 8am to 11pm EST
Sat-Sun 10am to 7pm EST

COCOON
by Coulisse

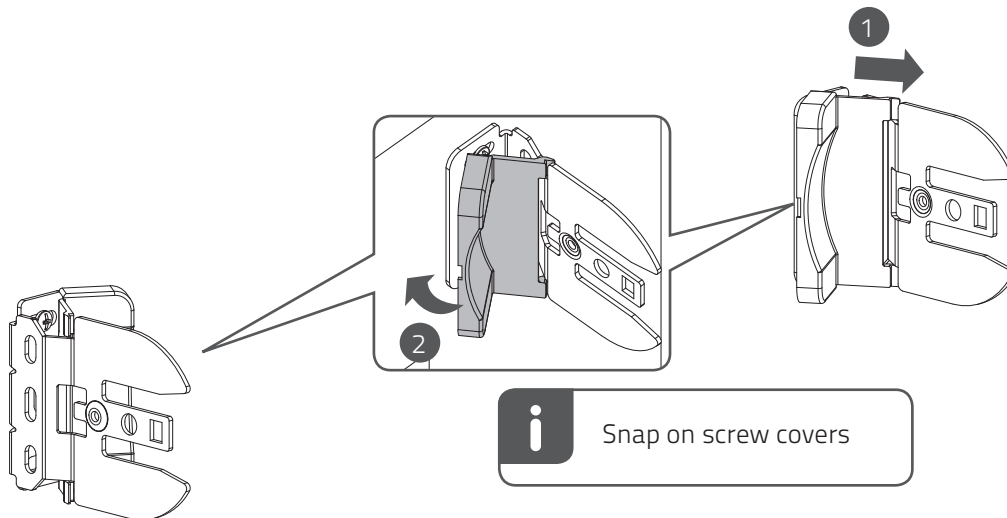
Installation instruction for safety device



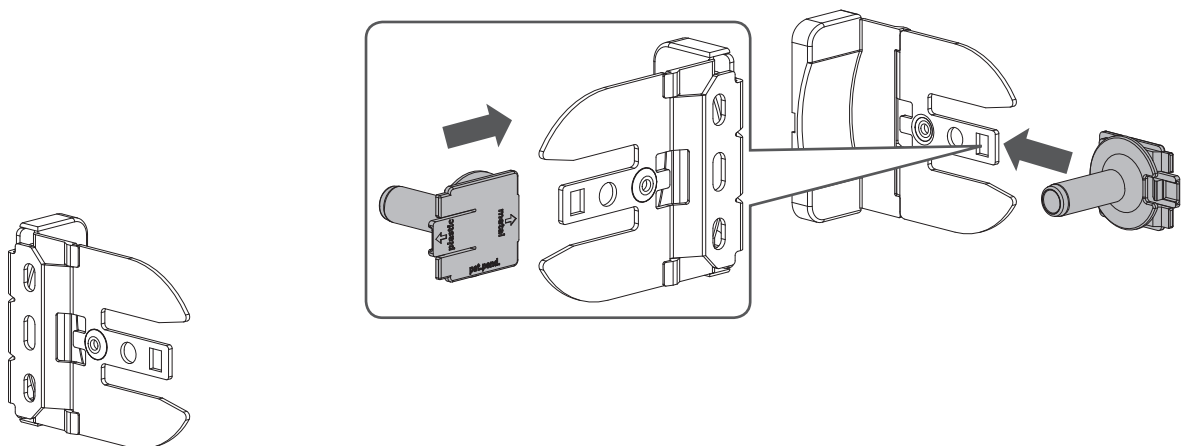


Installation

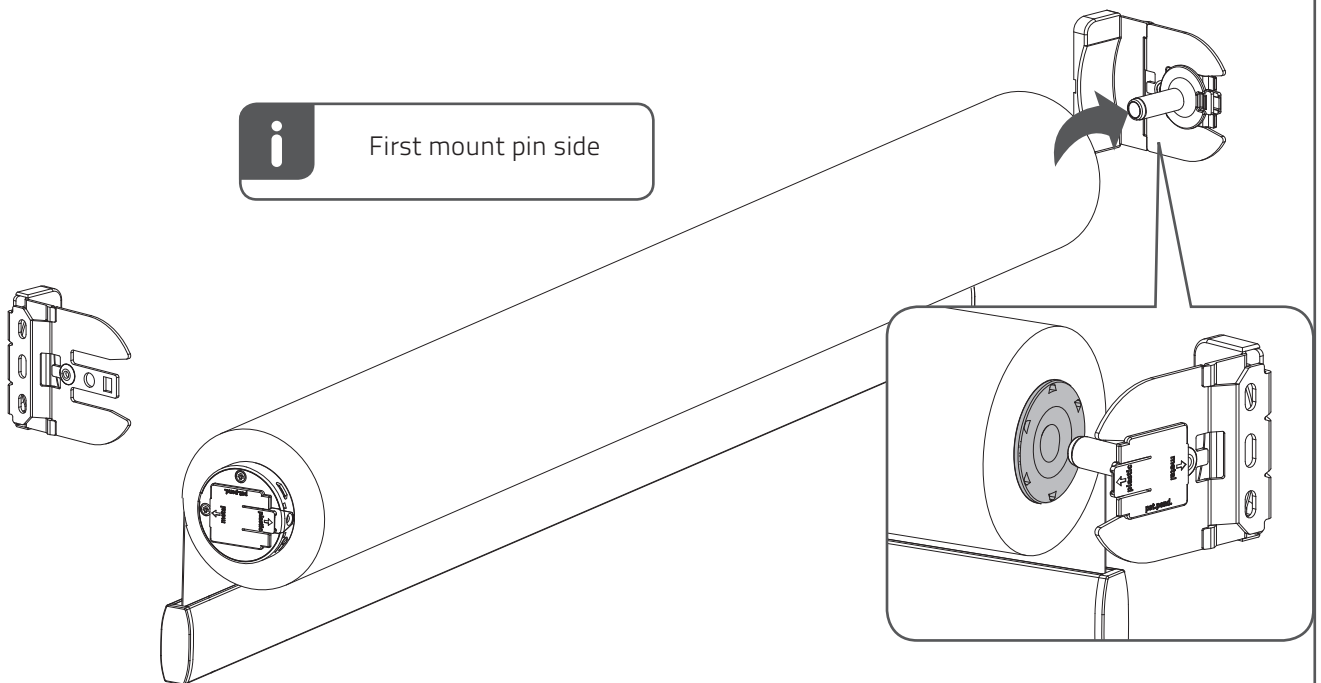
1



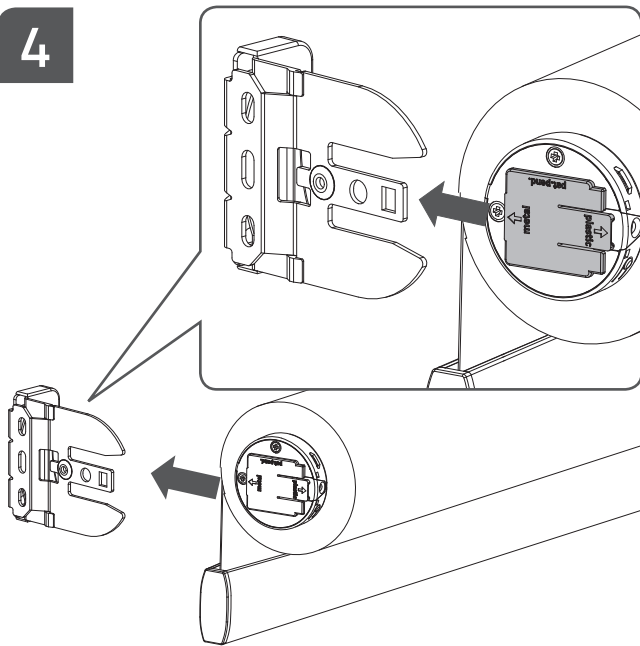
2



3



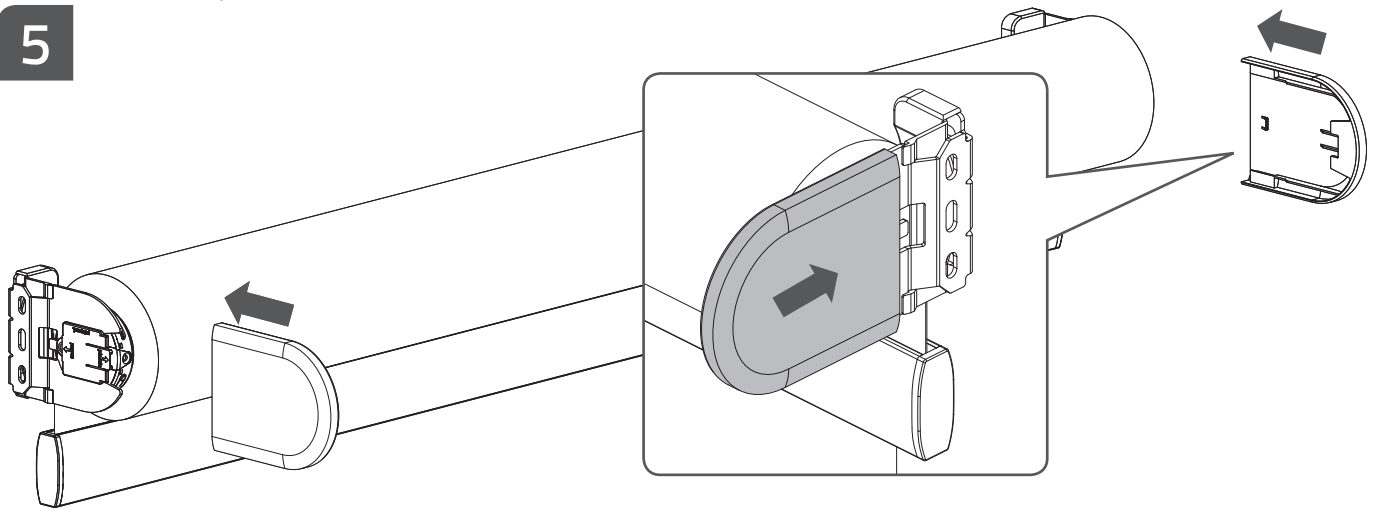
4



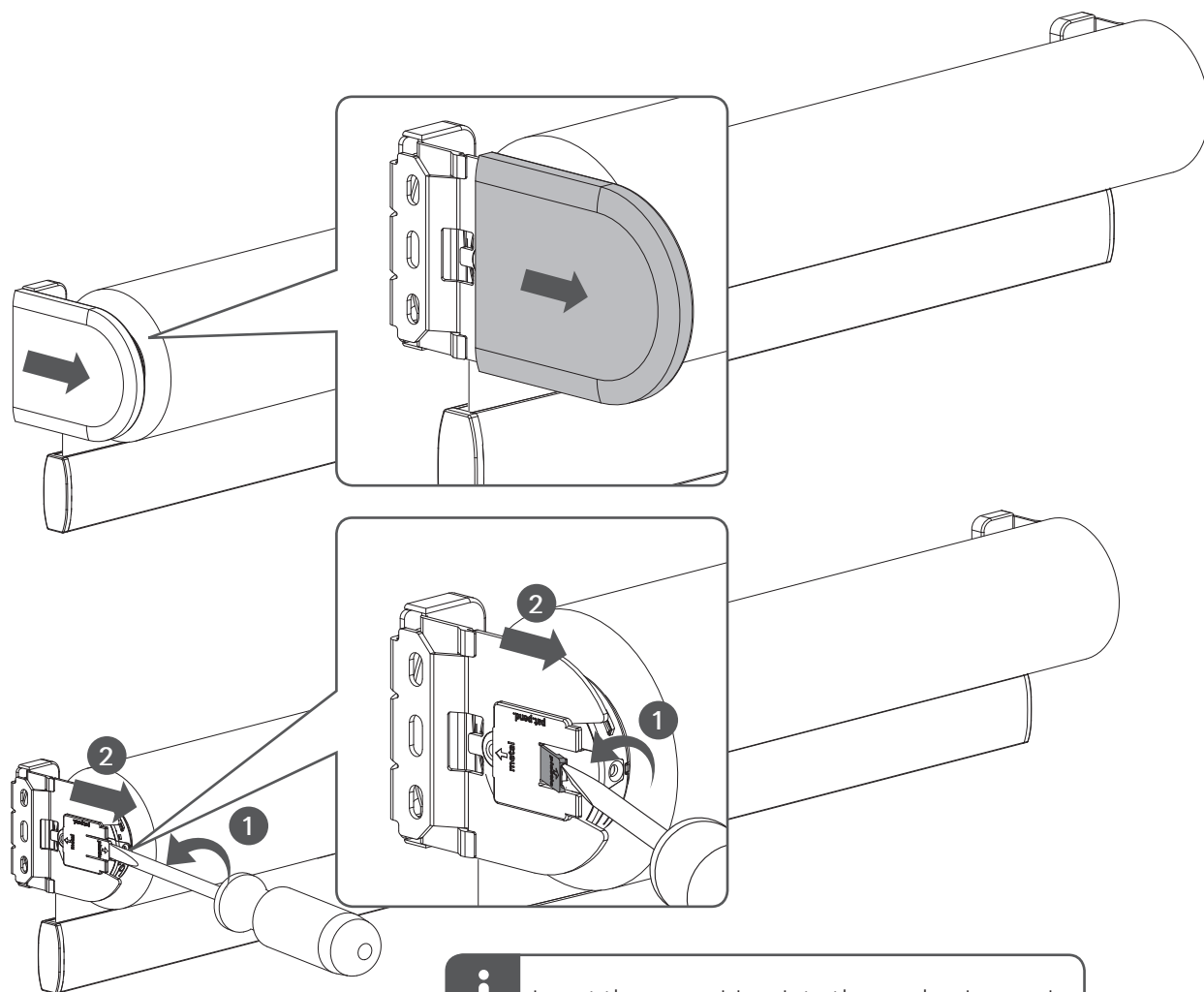
i

Than mount mechanism side

5

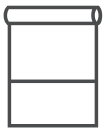


Removal

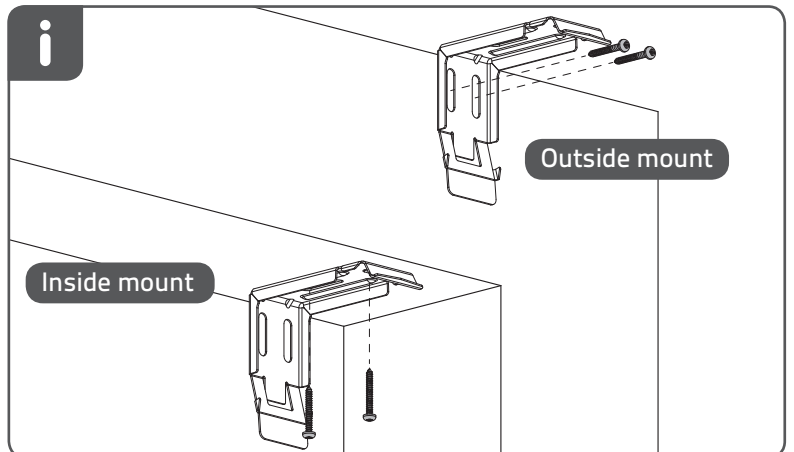
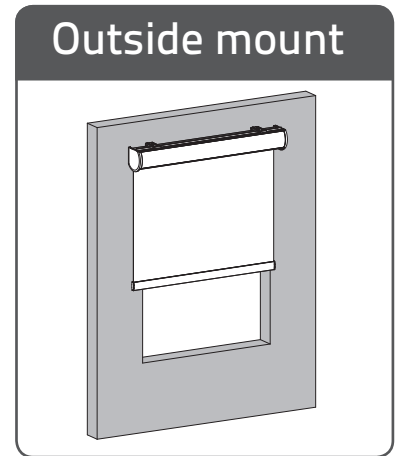
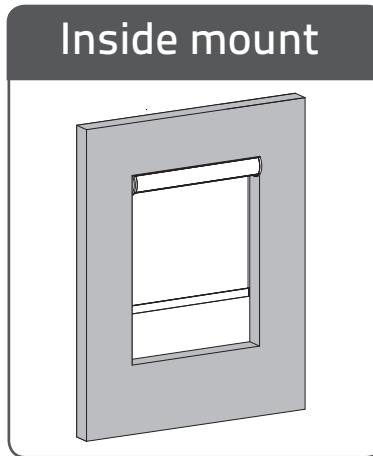
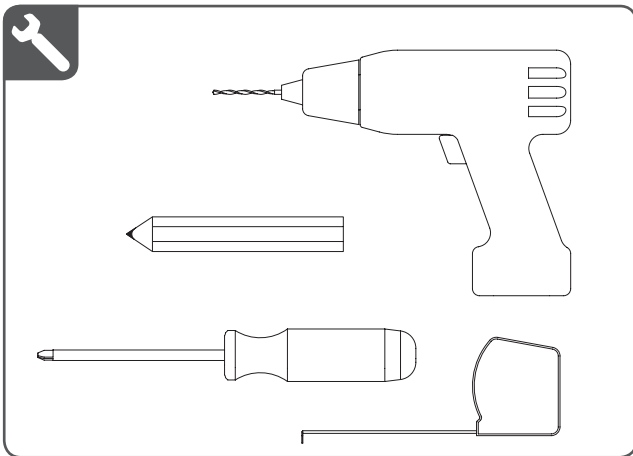
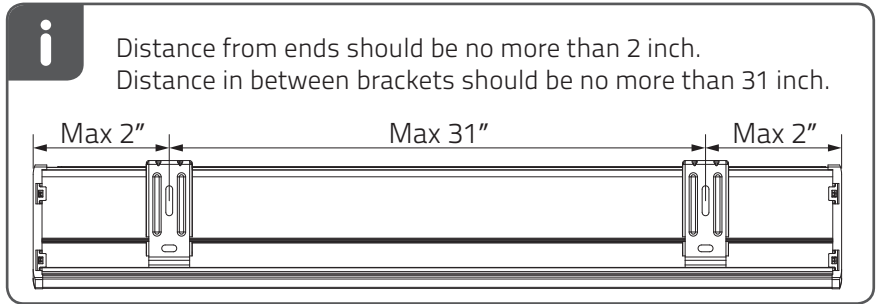
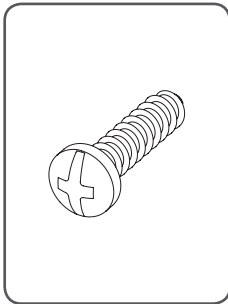
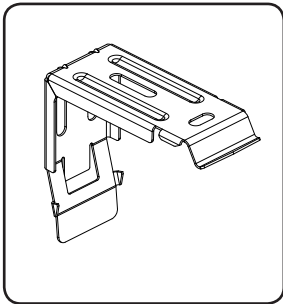
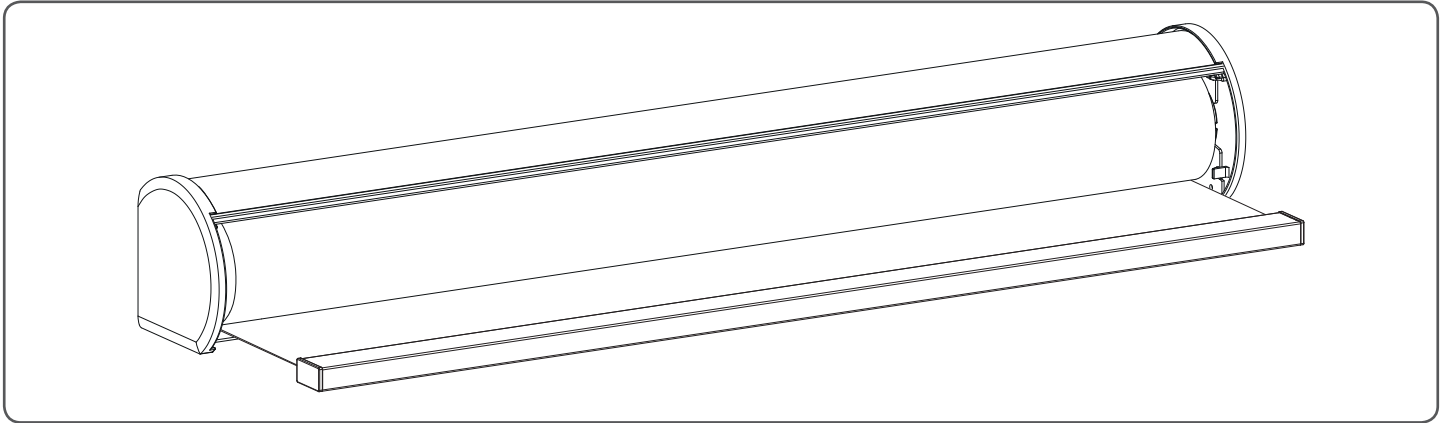


Insert the screwdriver into the mechanism and twist the screwdriver to take out the roller blind

Do not go back to store for support and replacement parts,
but call 1-800-575-2756
Mon-Fri 8am to 11pm EST
Sat-Sun 10am to 7pm EST



Semi-Open Motorized

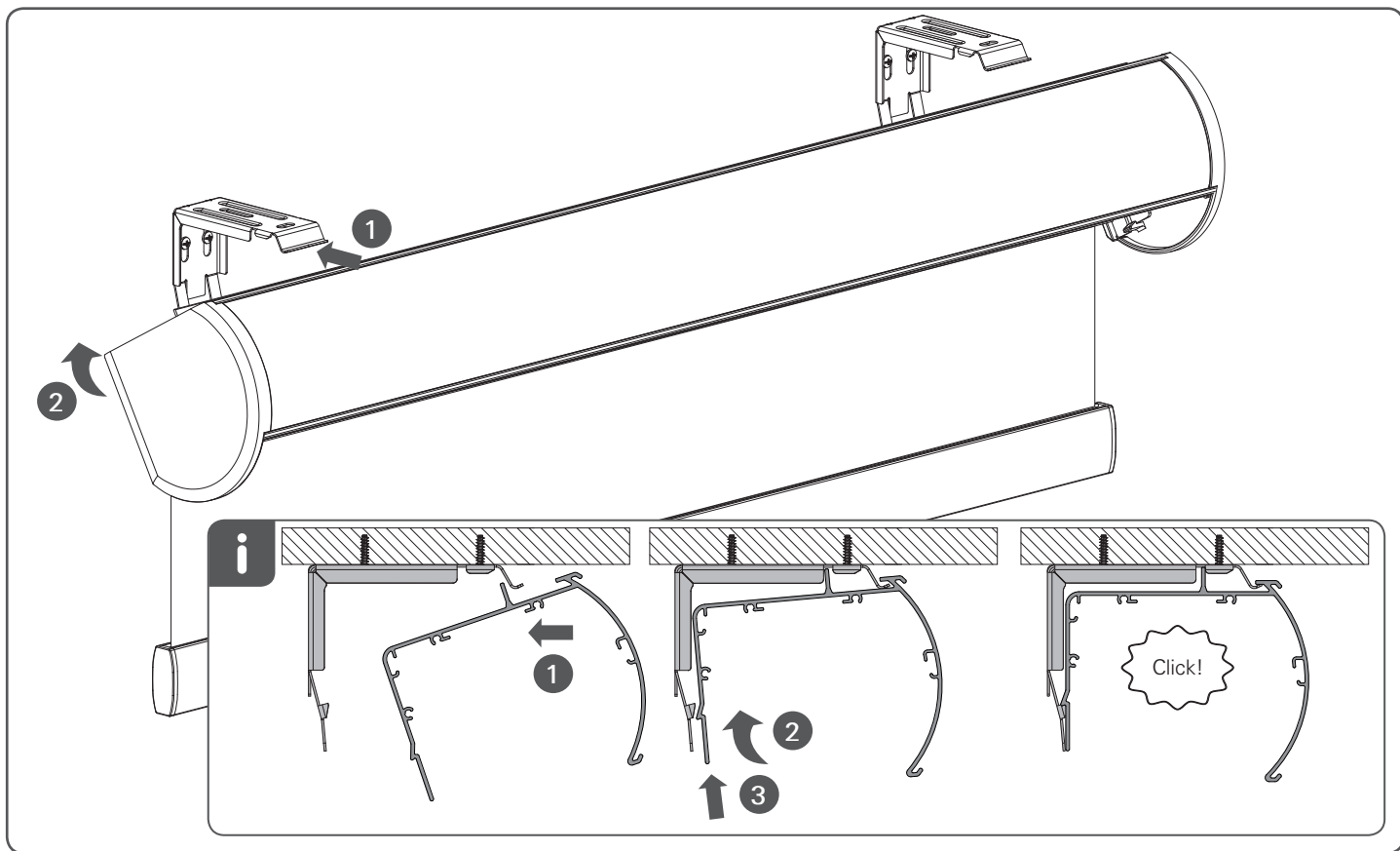


MN180021_20180713

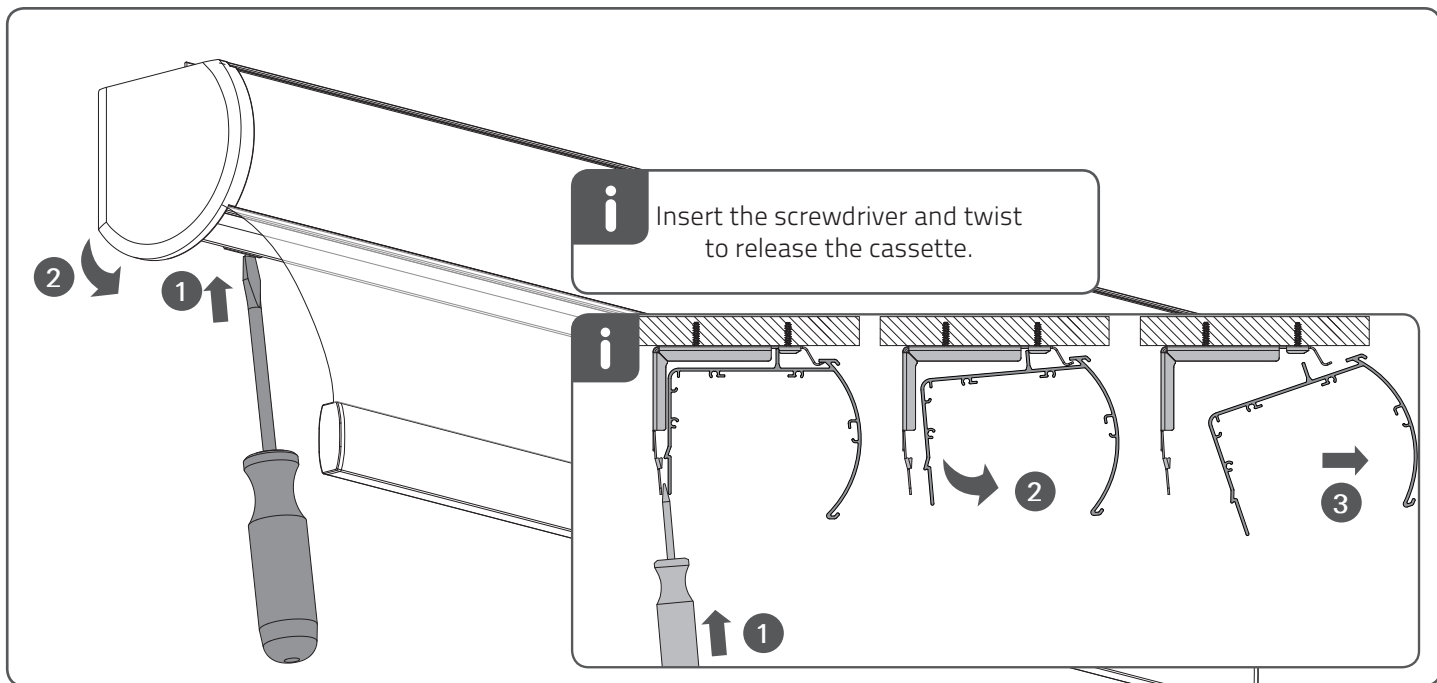
Fabrication Florida Venture
6600 NW 12th Avenue, Suite 201
Fort Lauderdale, FL 33309

COCOON
by Coulisse

Installation

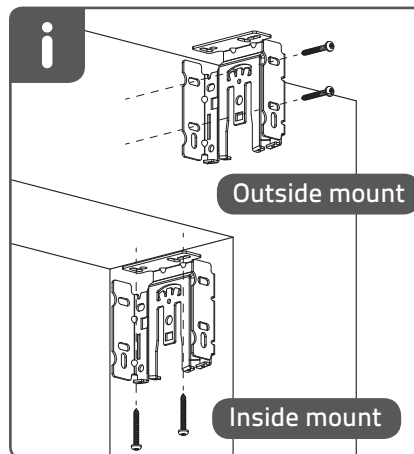
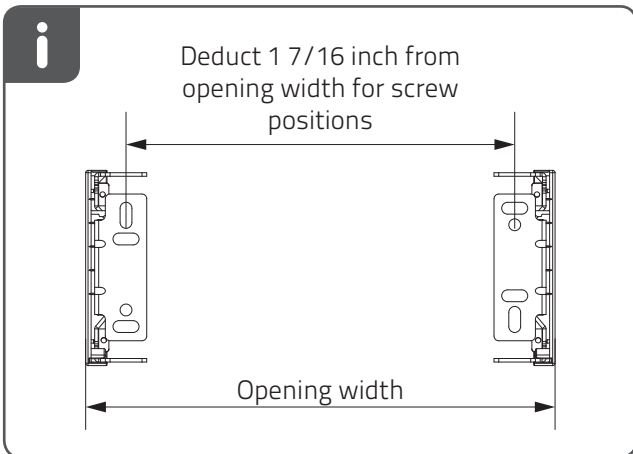
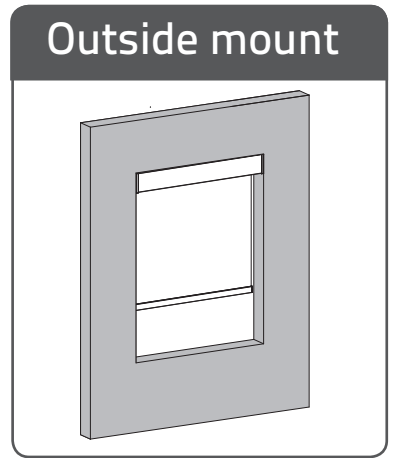
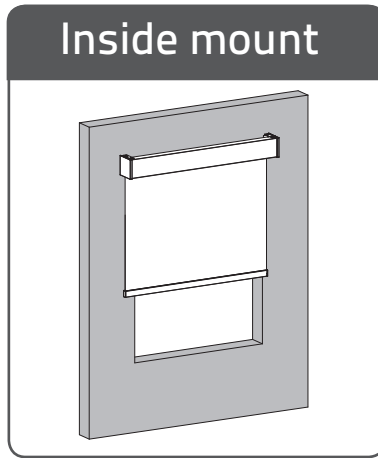
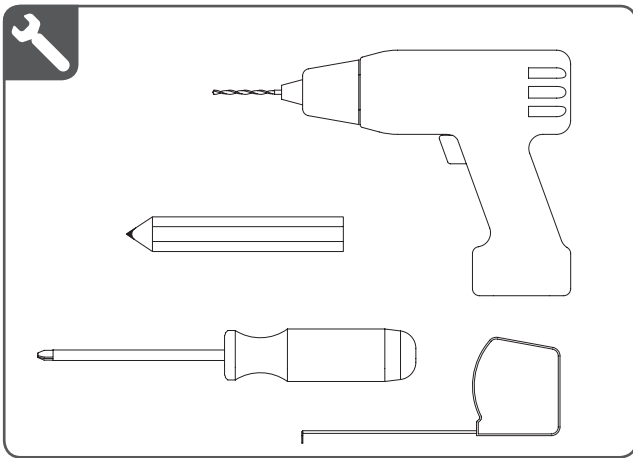
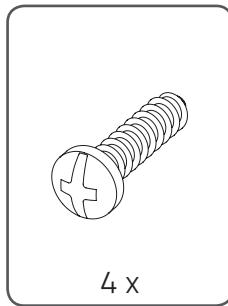
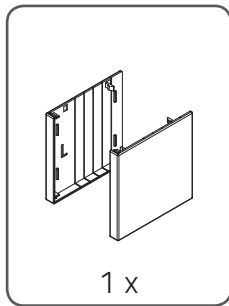
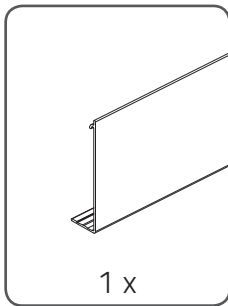
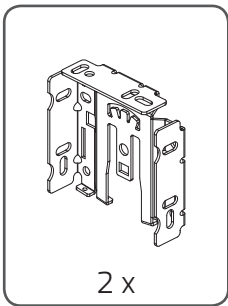
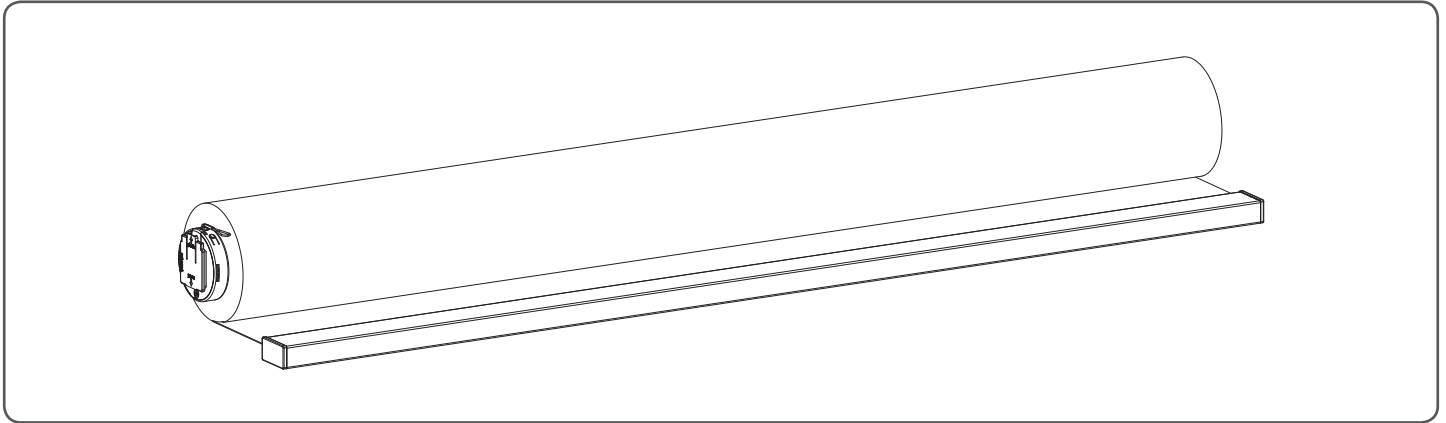


Removal



Do not go back to store for support and replacement parts,
but call 1-800-575-2756
Mon-Fri 8am to 11pm EST
Sat-Sun 10am to 7pm EST

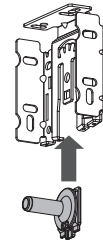
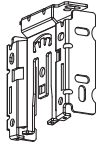
COCOON
by Coulisse



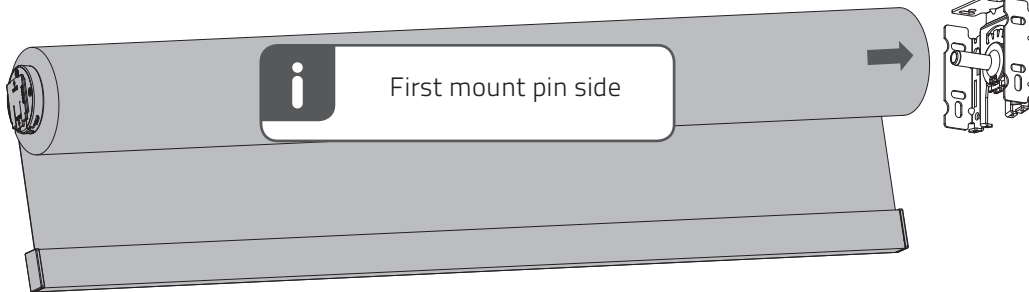
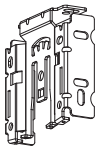
MN180023_20180713

Installation

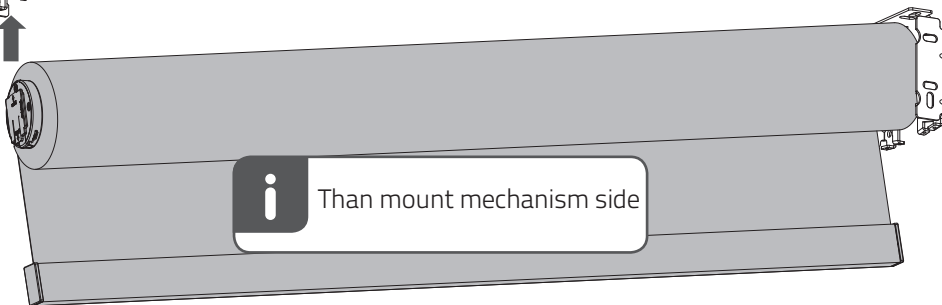
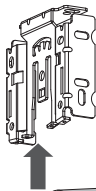
1



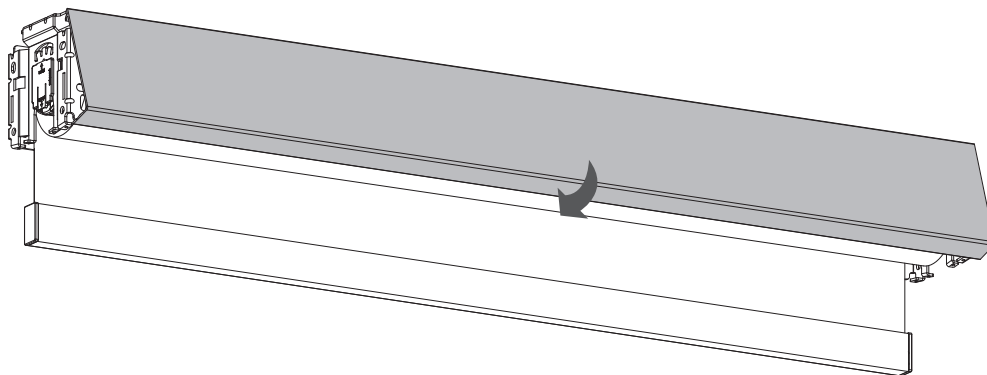
2



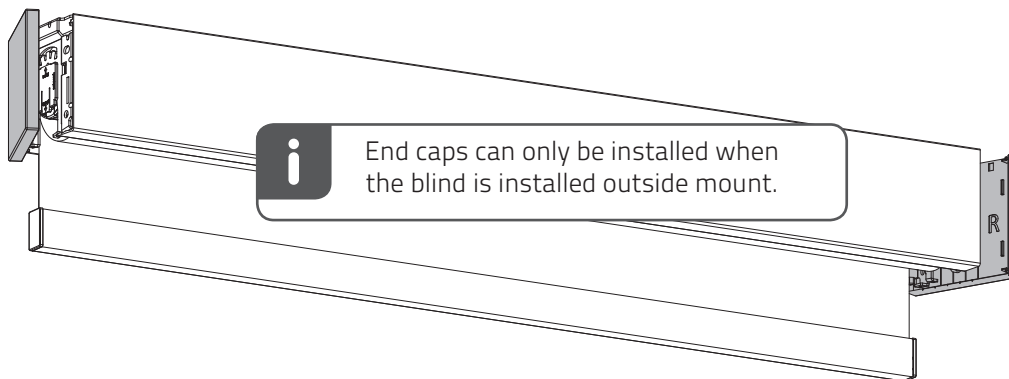
3



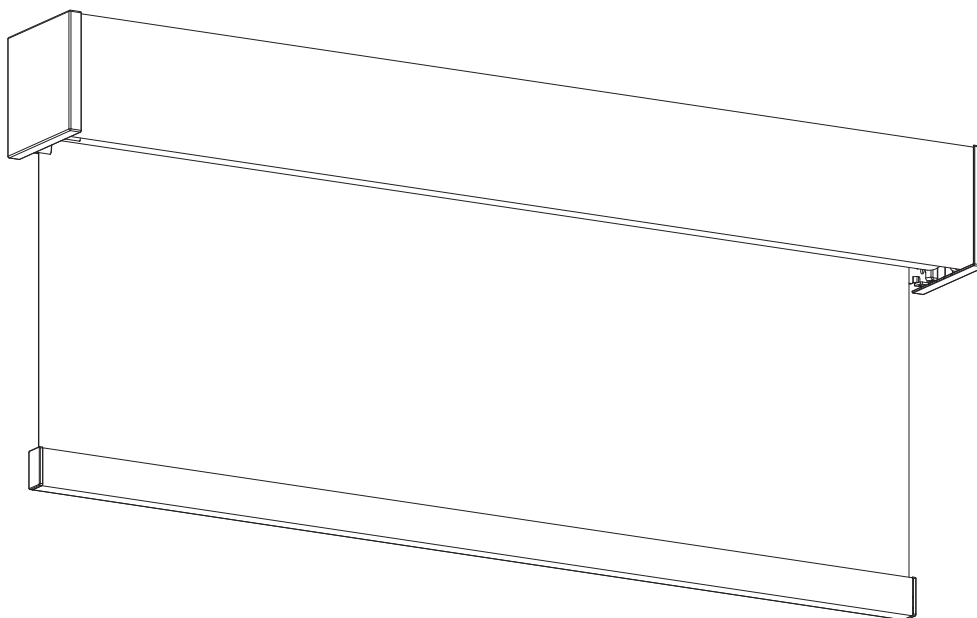
4



5



6

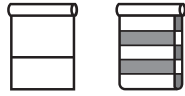


Do not go back to store for support and replacement parts,
but call 1-800-575-2756
Mon-Fri 8am to 11pm EST
Sat-Sun 10am to 7pm EST

COCOON
by Coulisse

CM-03/05

Li-ion battery powered tube motors with
pull and remote operation



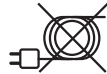
Motor features



Li-ion Battery
Integrated
lithium-ion battery



USB Rechargeable
Rechargeable with
micro USB



Wireless
Cable free
installation



Speed Control
Consistent
rolling speed



Bi-directional
Two-way
communication for
real-time response

Control options



Pull Control
Operate with
pull control



Remote Control
Operate with a
remote control



App Control
Operate with the
MOTION app



Connectivity
Compatible with
home and building
automation

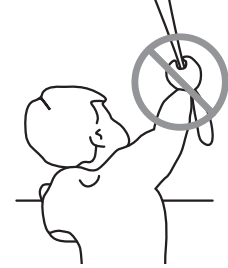
Support



Video
How to install,
program and operate
rtube.nl/red1034

WARNING

Read the instructions carefully
before assembling and
using the product. Assembly
can be completed by non-
professionals. For indoor use
only.



- Young children can strangle themselves with the loop of pull cords, chains and tapes, and cords that operate window coverings.
- To avoid strangulation and entanglement, keep cords out of reach of young children.

- Cords may ensnare a child's neck.
- Move beds, cots and furniture away from window covering cords.
- Do not tie cords together.
- Make sure cords do not twist together and form a loop.

Cleaning

Follow these general rules when cleaning the outside of the device and its components:

- Use a damp, soft, lint-free cloth. Avoid getting moisture in openings.
- Do not use aerosol sprays, solvents, alcohol, or abrasives.

Service & Support

Do not perform repairs yourself. Do not attempt to open the device or disassemble it. You run the risk of electric shock and voiding the limited warranty. No user-serviceable parts are inside.

Warranty Service

First follow the advice in this manual. If the product appears to be damaged or does not function properly, go to your local dealer for instructions on how to obtain warranty service.



IP 20



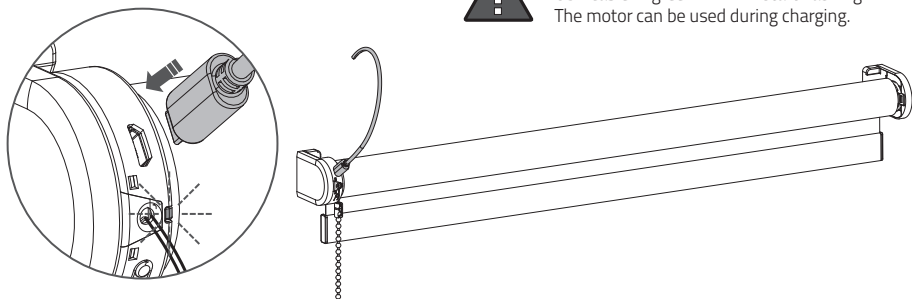
Conforms to
UL Std. 325
Certified to
CSA Std. C22.2/247
5011728

COCOON
by Coulissee

1 Activate the motor



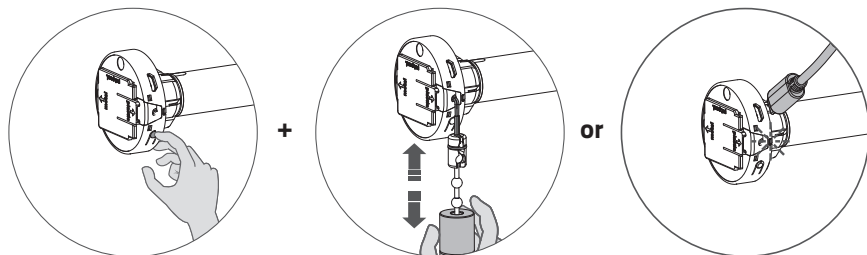
Activate the motor by charging it with a micro USB cable. A green LED will start flashing. The motor can be used during charging.



2 Activate / de-activate the motor

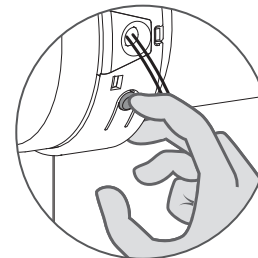
i To prevent the blind from damage the motor has a transport mode that makes sure the blind will not be activated before installation.

2.1 Hold the program button and pull twice to activate or de-activate the motor. The motor can also be activated by charging it with a micro USB cable.



3 Pair a remote

i Pair a remote control that is able to program blinds. See pages 4 and 5 for remote control details. In this manual, CM-12 is displayed.

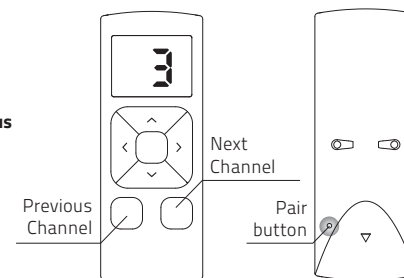


3.1 Shortly press the **program** button on the motor. The blind will start stepping, indicating that program mode has been activated. (The blind keeps stepping until the program mode is deactivated.)

3.2 Select a desired channel for the blind using the **previous channel** or **next channel** button on the remote control.

3.3 Press the **pair** button on the back of the remote control to pair the blind with the selected channel. The blind will shortly stop stepping, indicating that the remote has been paired to the blind.

i Repeat steps 3.1 - 3.3 to remove a blind from a channel.

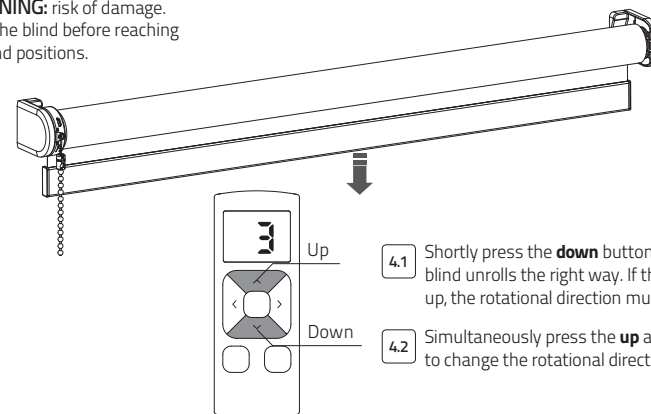


i End limits must be programmed to use a blind properly and to prevent it from being damaged. Proceed to step 9 if end limits are already set.

4 Check rotational direction



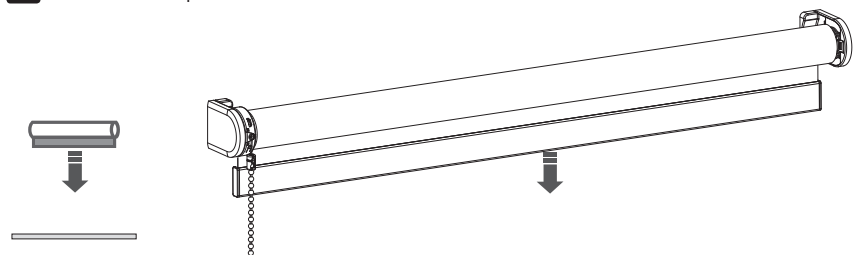
WARNING: risk of damage.
Stop the blind before reaching the end positions.



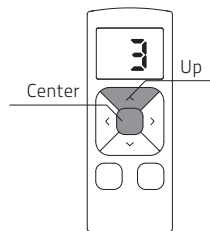
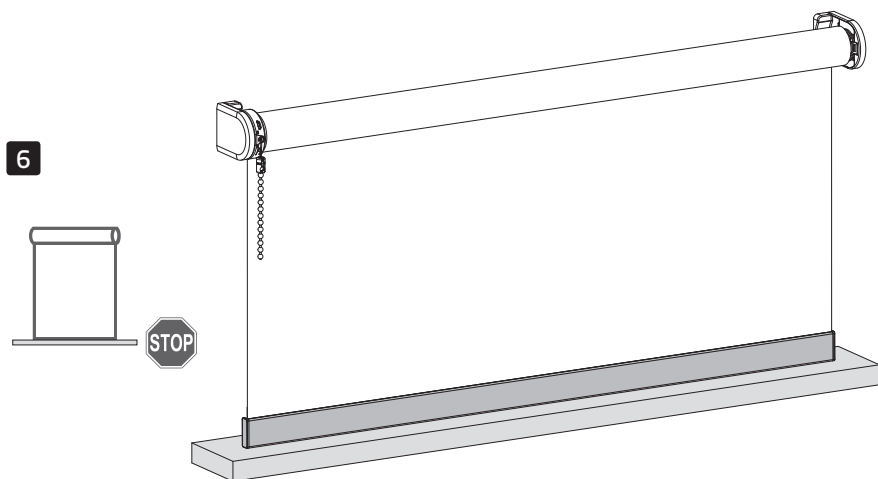
4.1 Shortly press the **down** button to check if the blind unrolls the right way. If the blind moves up, the rotational direction must be changed.

4.2 Simultaneously press the **up** and **down** button to change the rotational direction.

5 Set bottom position

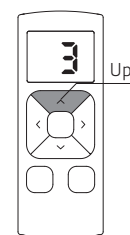
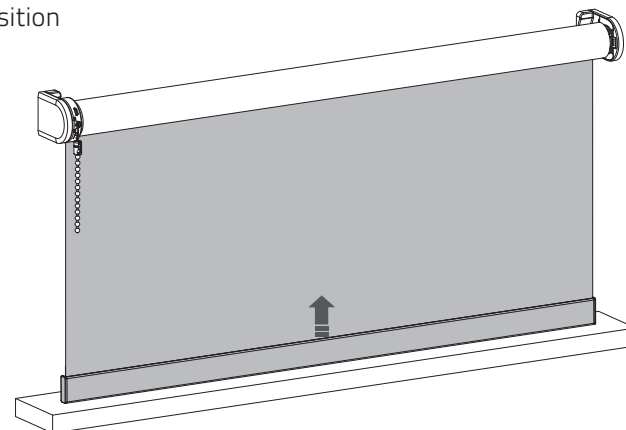


- 5.1 Press and hold the **down** button until the blind reaches the desired bottom position.
WARNING: risk of damage.
 Slowly approach the bottom position.



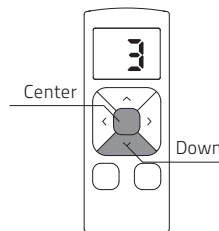
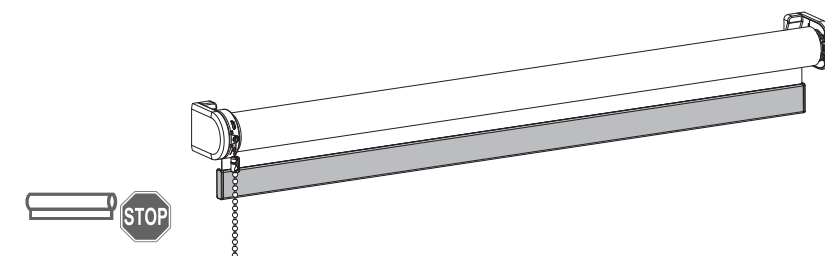
- Simultaneously hold the **centre** and the **up** button until the blind stops stepping and starts stepping again.
 The bottom position has been saved.

7 Set top position



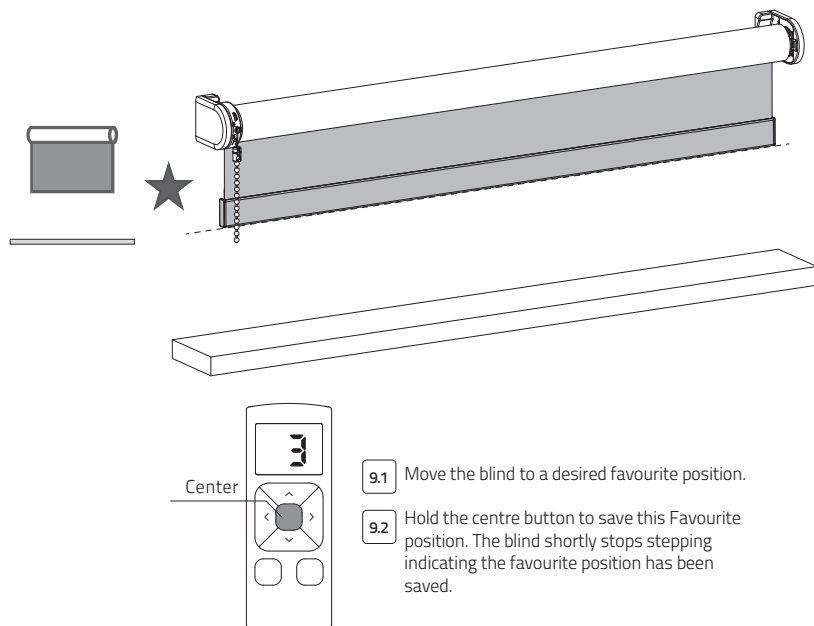
- 7.1 Press and hold the **up** button until the blind reaches the desired top position.
WARNING: risk of damage.
 Slowly approach the top position.

8

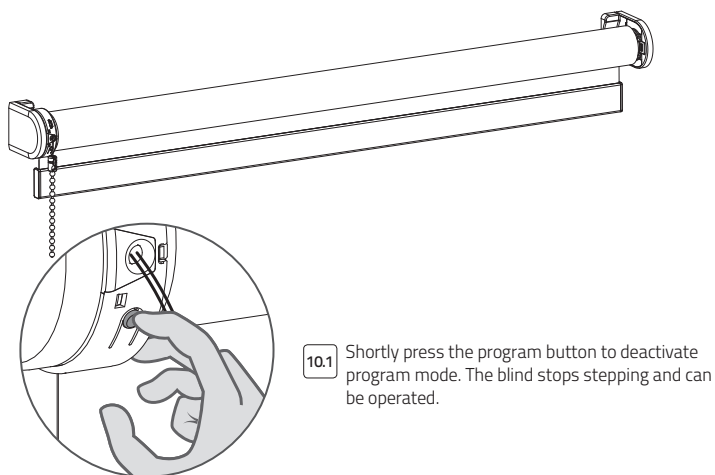


- 8.1 Simultaneously hold the **centre** and the **down** button until the blind stops stepping and starts stepping again.
 The top position has been saved.

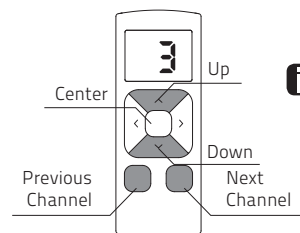
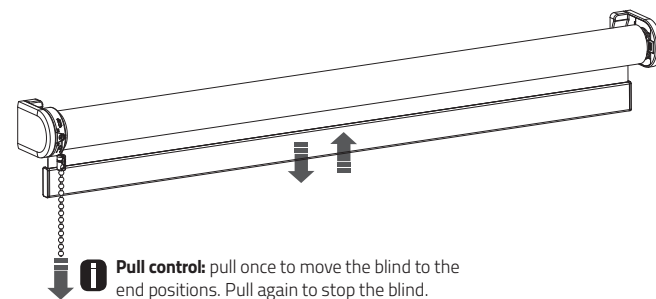
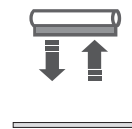
9 Set favourite position (optional)



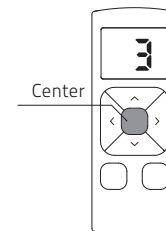
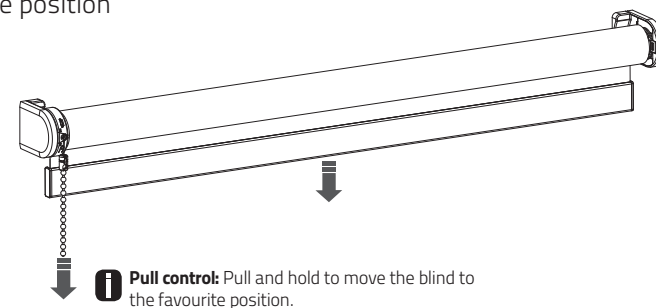
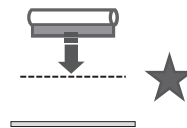
10 Deactivate program mode



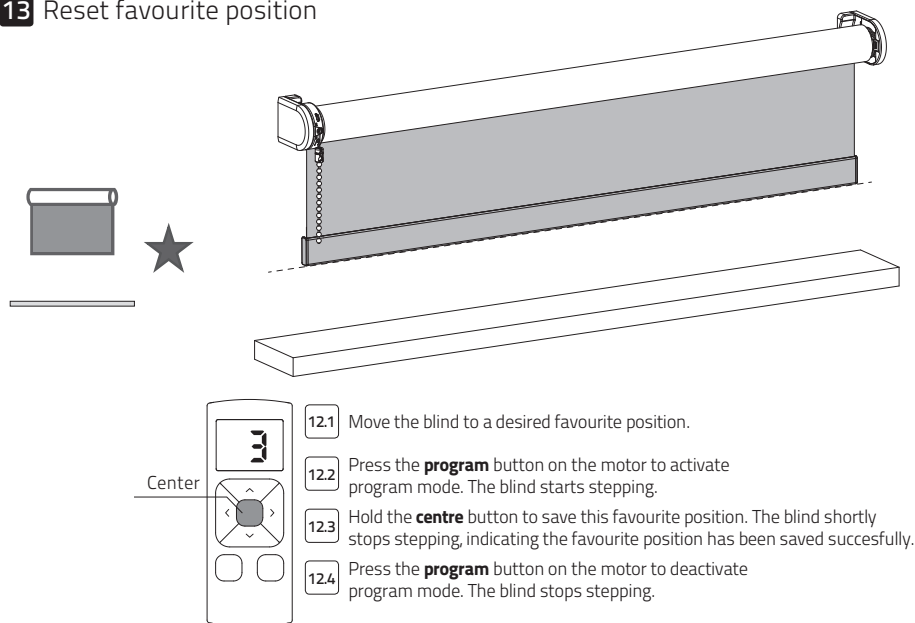
11 Operate the blind



12 Move to favourite position

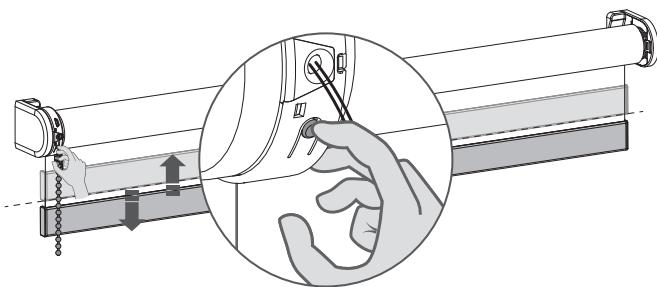


13 Reset favourite position



14 Reset the blind

i It is possible to only delete end limits or to do a factory reset. Factory reset will delete the end limits and remove the connection to any paired remote.



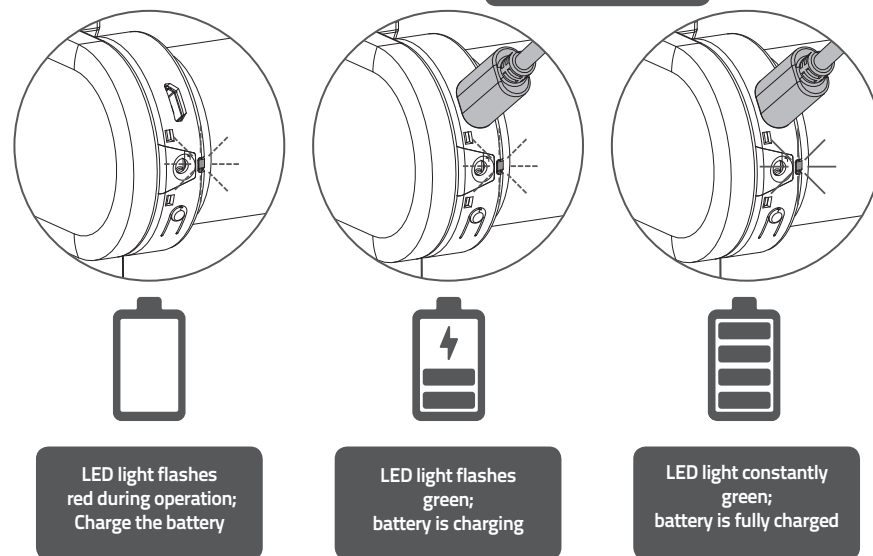
14.1 Press the program button on the motor to activate program mode.

i **Delete end limits:** to delete the end limits of the blind, hold the **program** button until the blind stops stepping for the first time, and keep holding the button until the blind stops stepping for the second time. (approximately 10 seconds)

i **Factory reset:** to reset the blind to factory defaults hold the button for at least 20 seconds. The blind will stop stepping twice. After the second stop the blind will give one extra step to confirm factory reset.

15 Recharge the battery

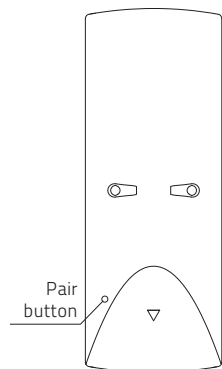
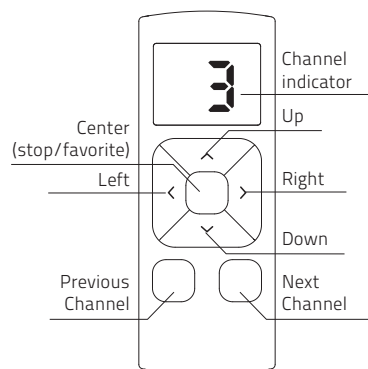
Use a micro USB cable to charge the motor



Frequently Asked Questions

Problem	Cause	Solution
Blind does not work.	Motor is in transport mode.	Activate the motor. See step 25.
	Motor battery is empty.	Charge the motor. See step 19.
	Remote battery is empty. (LEDs of remote are flashing rapidly.)	Replace the battery in the remote. See the manual of the remote.
	Remote battery is inserted incorrectly.	Replace the battery in the remote. See the manual of the remote.
	Radio-frequency interference	Make sure that the antenna of the motor is out of the way of metal objects.
	The distance from the remote to the motor is too far.	Move closer to the motor.
	The remote is not connected to the blind.	Pair the remote with the motor. See step 6.
Motor LED flashes red.	The battery of the motor is empty.	Charge the motor. See step 19.
Blind is not charging.	Charger is not plugged in or does not work.	Try a different charger or make sure the charger is plugged in the outlet.
Blind moves in small steps.	1) No end limits are programmed. 2) Direct control is deactivated.	1) Program end limits. See step 8 - 11. 2) Activate direct control. See step 17.
Favourite position can not be programmed.	No end limits are programmed.	Program end limits. See step 8 - 11.
Blind lowers too far.	End limits are programmed incorrectly.	Reprogram end limits. See step 8 - 11.
Blind moves in the opposite direction.	The rotational direction has been set incorrectly.	Change the rotational direction. See step 7.

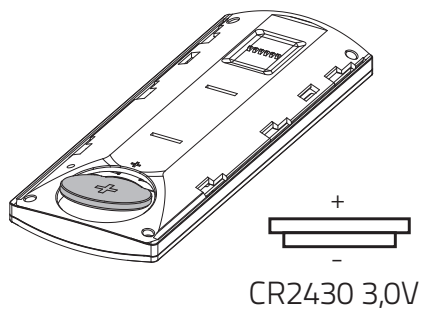
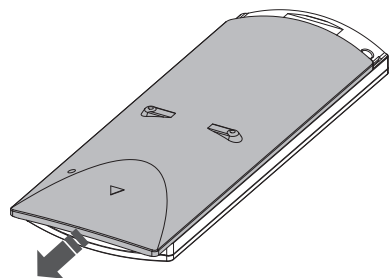
1 Buttons / control



i The center button has two functions: press to stop the blind, hold to move the blind to its favorite position.

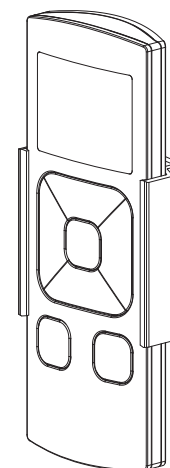
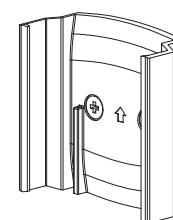
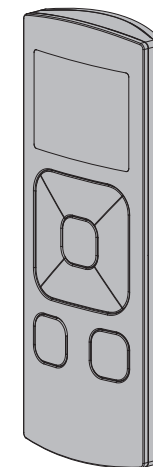
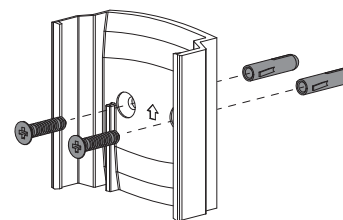
2 Changing the battery

i The battery indicator will show when the battery needs to be replaced.

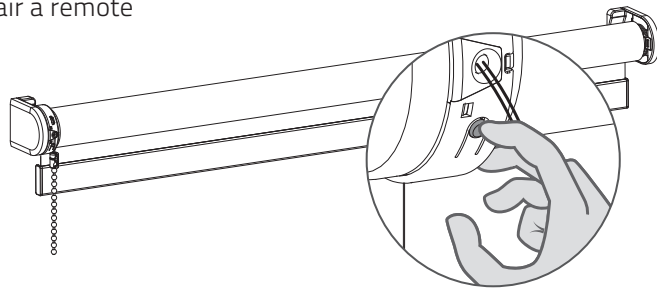


3 Remote holder

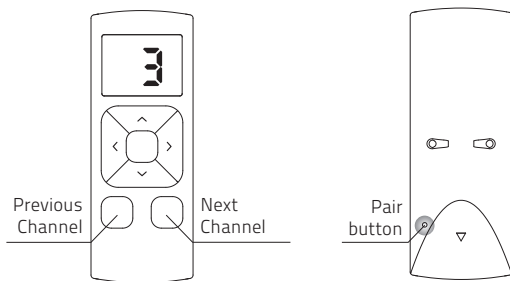
Different materials require different types of fittings. Always choose screws and plugs that are specially suited to the material.



4 Pair a remote



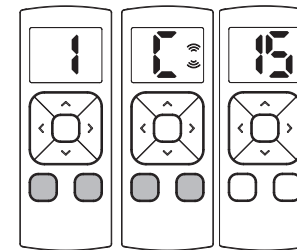
- 4.1 Shortly press the **program** button on the motor. The blind will start stepping, indicating that program mode has been activated. (The blind remains stepping until the program mode is de-activated.)
- 4.2 Select a desired channel for the blind using the **previous channel** or **next channel** button on the remote control.
- 4.3 Press the **pair** button on the back of the remote control to pair the blind to the selected channel. The blind will shortly stop stepping indicating that the remote has been paired to the blind.
- i** Repeat steps 4.1 - 4.3 to remove a blind from a channel.



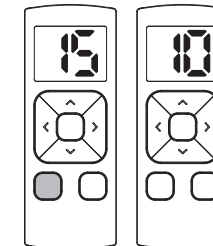
7 Hide channels

- i** Limit the number of accessible channels in the remote. Channels that are not used will be displayed.

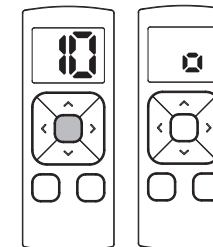
- 7.1 To hide channels simultaneously hold the **previous channel** and **next channel** button. The screen will first display a **C**, hold until the screen displays **15**.



- 7.1 Press the **previous channel** button until the display shows the desired amount of channels.



- 7.3 Press the center button until the screens displays **0**



- 7.4 To restore 15 channels go back to step 7.1 and choose 15 channels at step 7.2. Save the amount of channels by pressing the center button.

Important Safety instructions

WARNING: To reduce the risk of severe injury or death, it is important to follow these instructions for personal safety. Save these instructions.

- Read and follow all installation instructions.
- This appliance can be used by children aged 8 years and above and persons with reduced physical, sensory or mental capabilities or lack of experience and knowledge if they have been given supervision or instruction concerning use of the appliance in a safe way and understand the hazards involved. Children should not play with the appliance. Cleaning and user maintenance should not be performed by children without supervision.
- Do not allow children to play with fixed controls. Keep remote controls away from children.
- Frequently examine the installation for imbalance and signs of wear or damage to cables and springs. Do not use if repair or adjustment is necessary.
- This instruction manual is also available on the website.
- The drive must be disconnected from its power source during cleaning, maintenance and when replacing parts.
- The A-weighted emission sound pressure level of the drive is equal to or less than 70dB(A).
- Indoor and household use only.
- Disconnect the drive from the power supply or switch off the automatic controls when maintenance, such as window cleaning, is being carried out in the vicinity.
- When operating a biased switch, make sure that other persons are kept away.
- Do not operate when maintenance, such as window cleaning, is being carried out in the vicinity.
- The tube motor must only be supplied with safety extra low voltage corresponding to the marking on the appliance.
- This appliance contains batteries that are non-replaceable.

Coulisse Fabrication
6600 NW 12th Avenue, Suite 201
Fort Lauderdale, FL 33309

Important Installation instructions

WARNING: Important safety instructions. Follow all instructions, since incorrect installation can lead to severe injury.

- This motor can only be used with soft material for driven parts.
- Hazardous unprotected moving parts of the drive must be installed higher than 2.5m above the floor or any other level surface that could provide access to it.
- Install the actuating member of a manual release at a height less than 1.8m.
- The actuating member of a biased switch is to be located within direct sight of the driven part but away from moving parts. It is to be installed at a minimum height of 1.5m and not accessible to the public.
- The mass and the dimension of the driven part must be compatible with the rated torque and rated operating time.
- Fixed controls have to be clearly visible after installation.
- The driven part must be compatible with the rated torque (1.1N.m/2.2N.m) and rated operating time (12min).
- Minimum tube diameter: Ø25mm.
- The drive is intended to be installed at a height of at least 2.5m above the floor or any other accessible level surface.
- All-pole disconnection switches must be incorporated in the fixed wiring in accordance with the wiring rules.

FCC Manual

This device complies with Part 15 of the FCC Rules. Operation is subject to the following two conditions:
(1) this device may not cause harmful interference, and
(2) this device must accept any interference received, including interference that may cause undesired operation.

FCC ID: ZY4CM03

FCC ID: ZY4CM05

Regulatory Information

1 FCC Information for User

This product does not contain any user serviceable components and is to be used with approved antennas only. Any product changes or modifications will invalidate all applicable regulatory certifications and approvals.

2 FCC Electronic Emission Notices

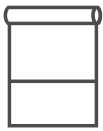
This device complies with part 15 of the FCC Rules. Operation is subject to the following two conditions:
1. This device may not cause harmful interference
2. This device must accept any interference received, including interference that may cause undesired operation.

3 FCC Radio Frequency Interference statement

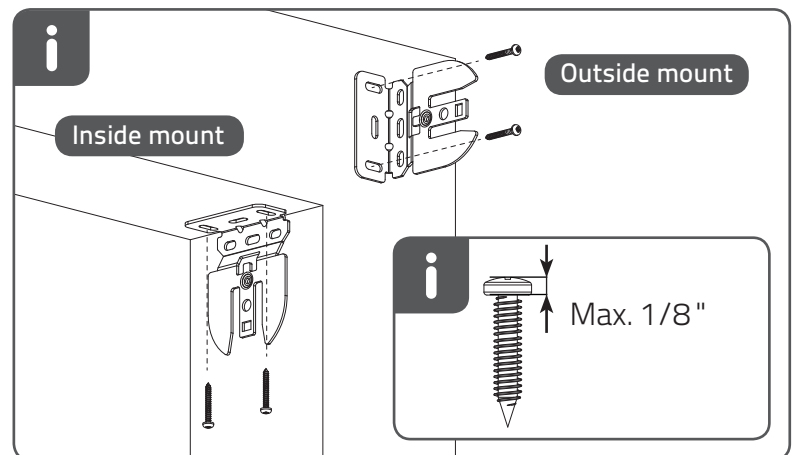
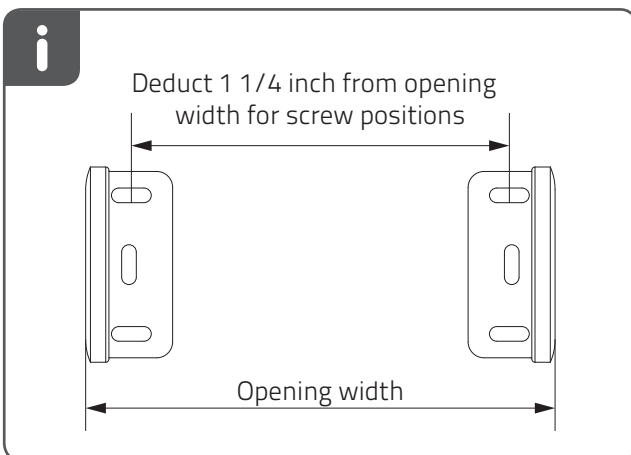
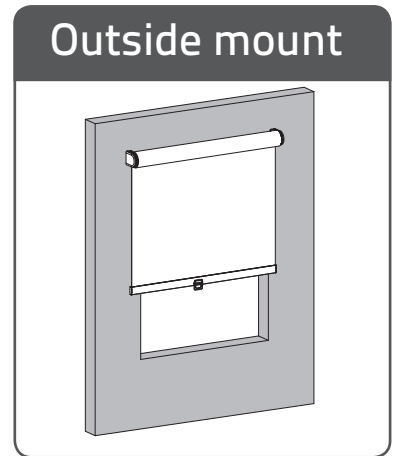
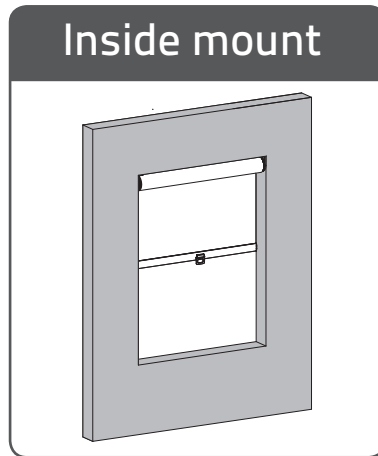
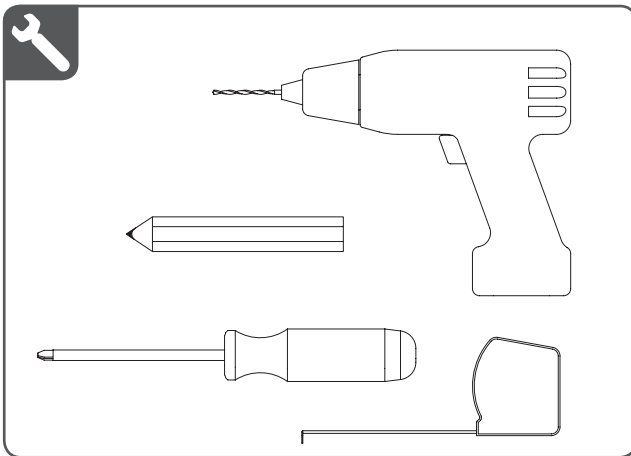
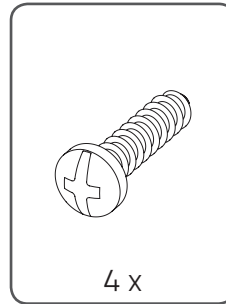
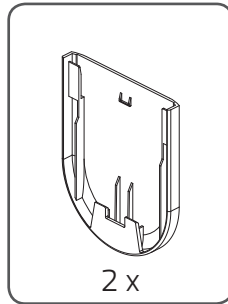
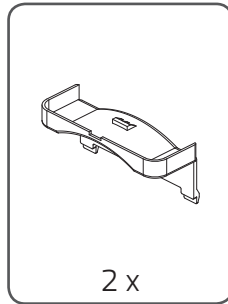
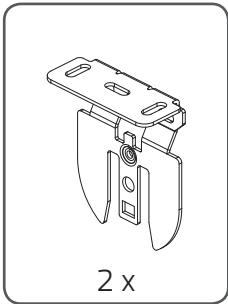
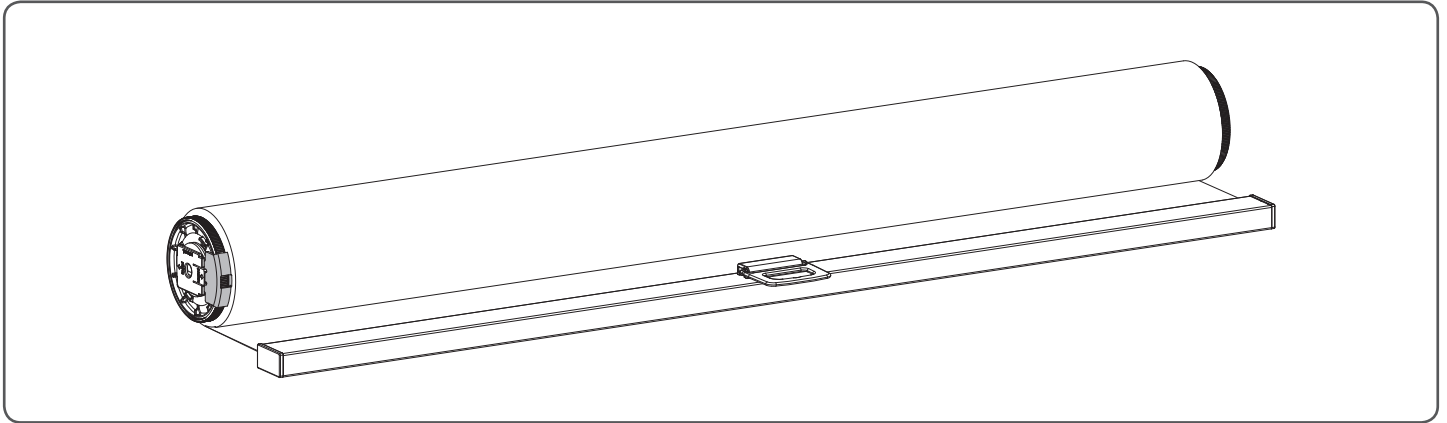
This equipment has been tested and found to comply with the limits for a class B digital device, pursuant to Part 15 of the FCC Rules. These limits are designed to provide reasonable protection against harmful interference when the equipment is operated in a commercial environment. This equipment generates, uses and can radiate radio frequency energy and, if not installed and used in accordance with the instructions, may cause harmful interference to radio communications. Operation of this equipment in a residential area may cause harmful interference, in which case the

user will be required to correct the interference at their own expense.
If this equipment does cause harmful interference to radio or television reception, which can be determined by turning the equipment off and on, the user is encouraged to try to correct the interference by one or more of the following measures:

- Reorient or relocate the receiving antenna
- Increase the distance separating the equipment and receiver
- Connect the equipment to an outlet on a circuit different from that to which the receiver is connected
- Consult the dealer or an experienced radio/TV technician for help



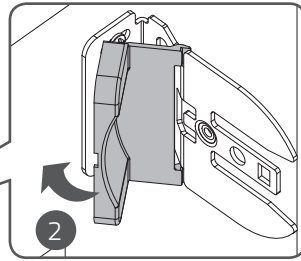
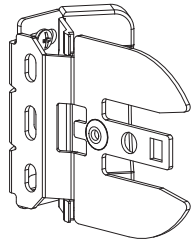
Bracket Spring



MN180012_20180713

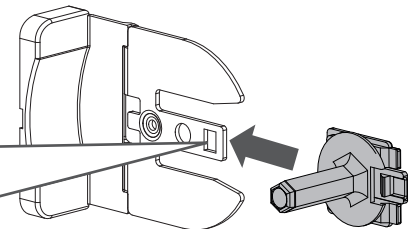
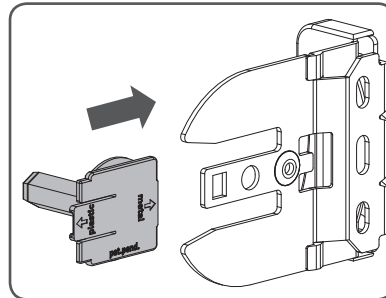
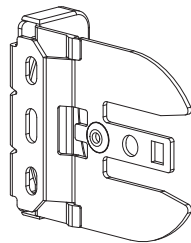
Installation

1



Snap on screw covers

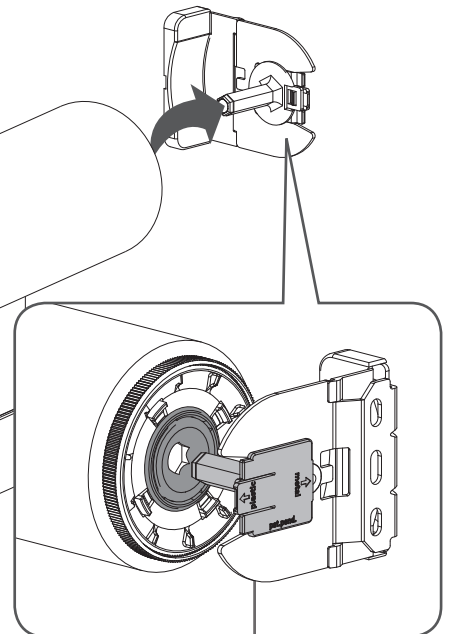
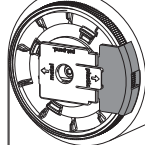
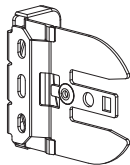
2



3



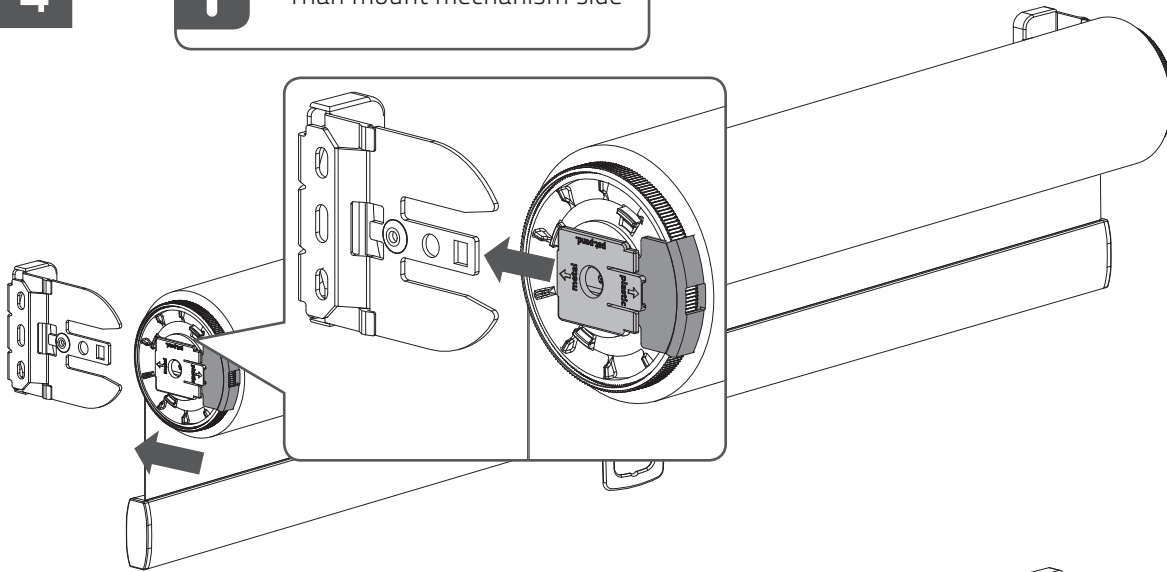
First mount pin side



4



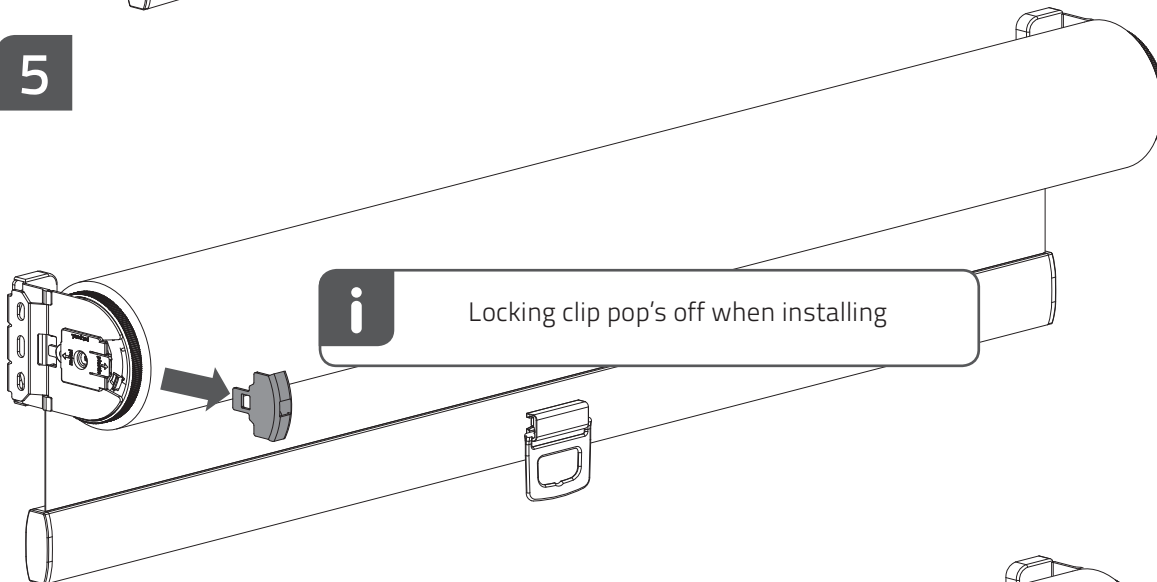
Then mount mechanism side



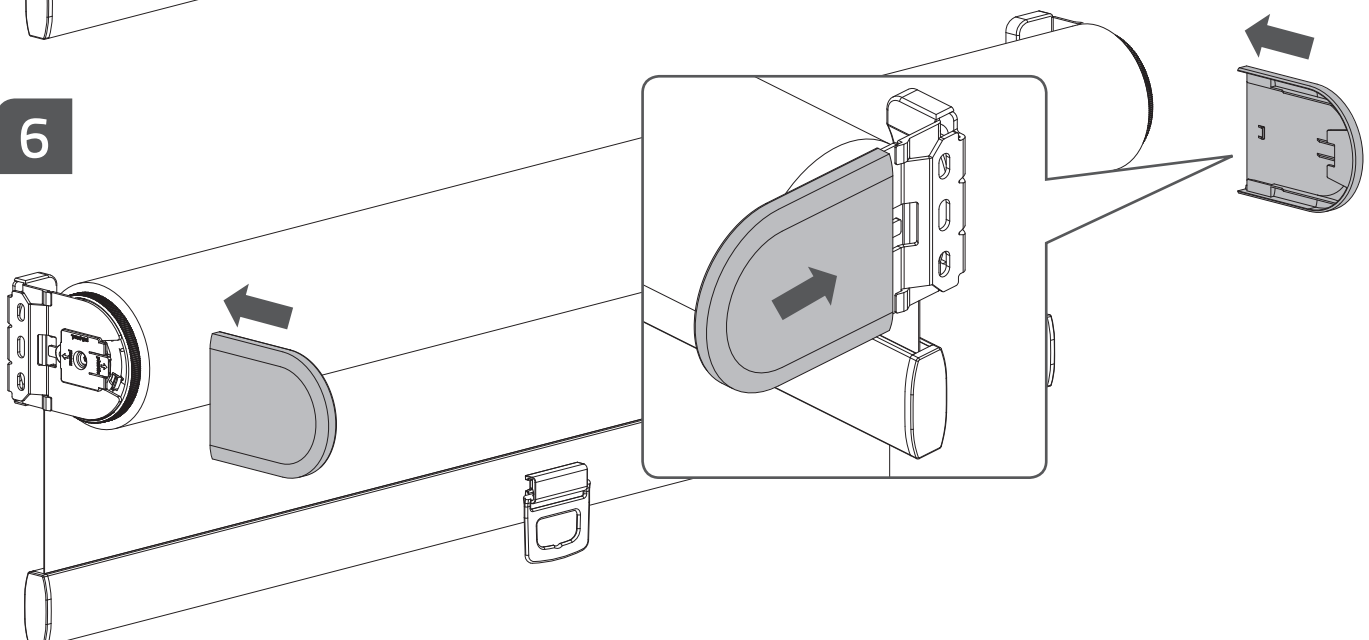
5



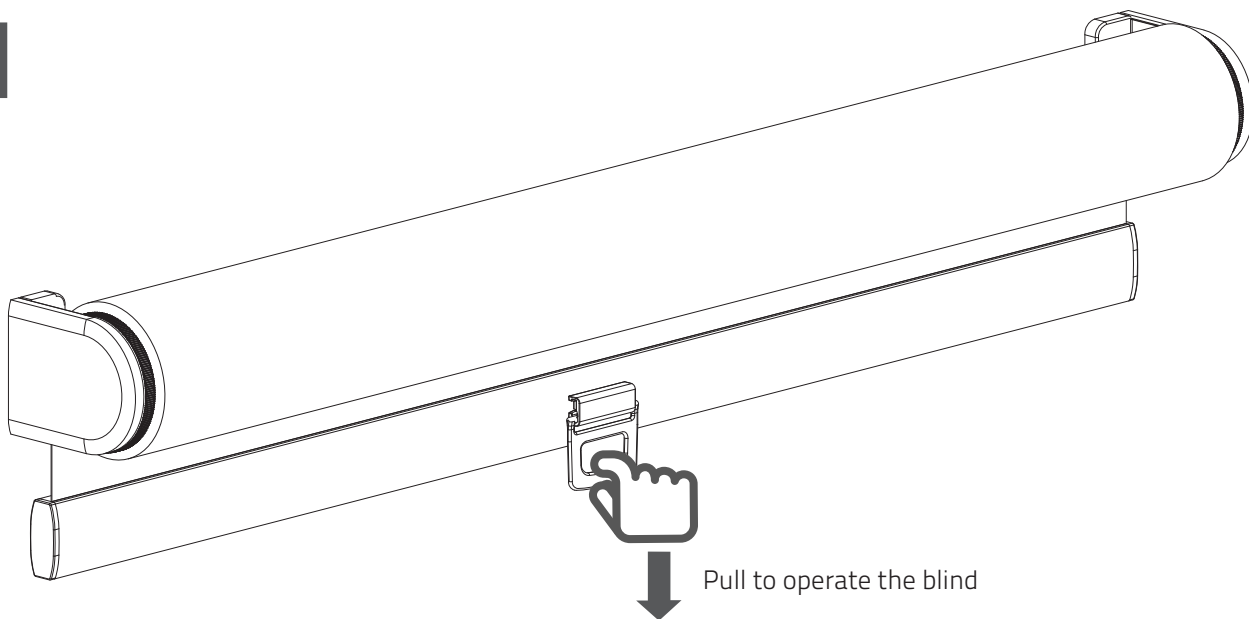
Locking clip pop's off when installing



6

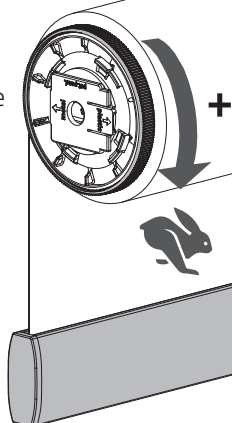


7

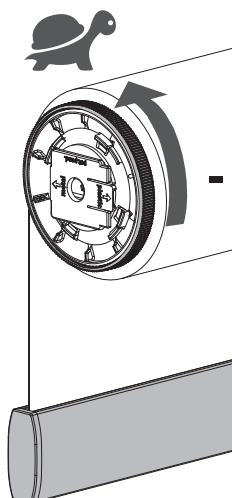


Adjust spring tension

Rotate to increase the lifting speed

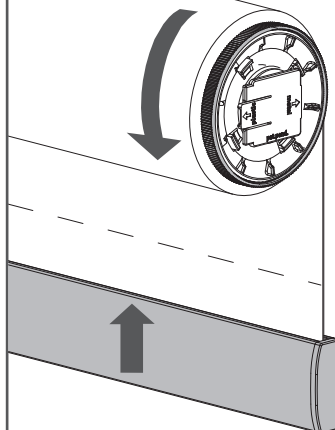


Rotate to lower the lifting speed

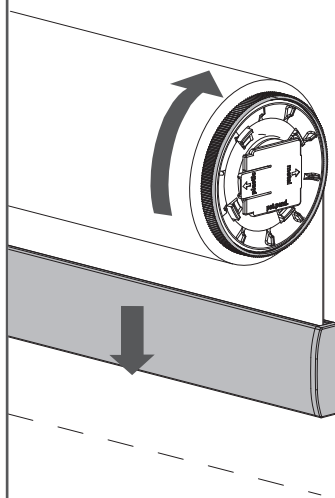


Adjust top limit

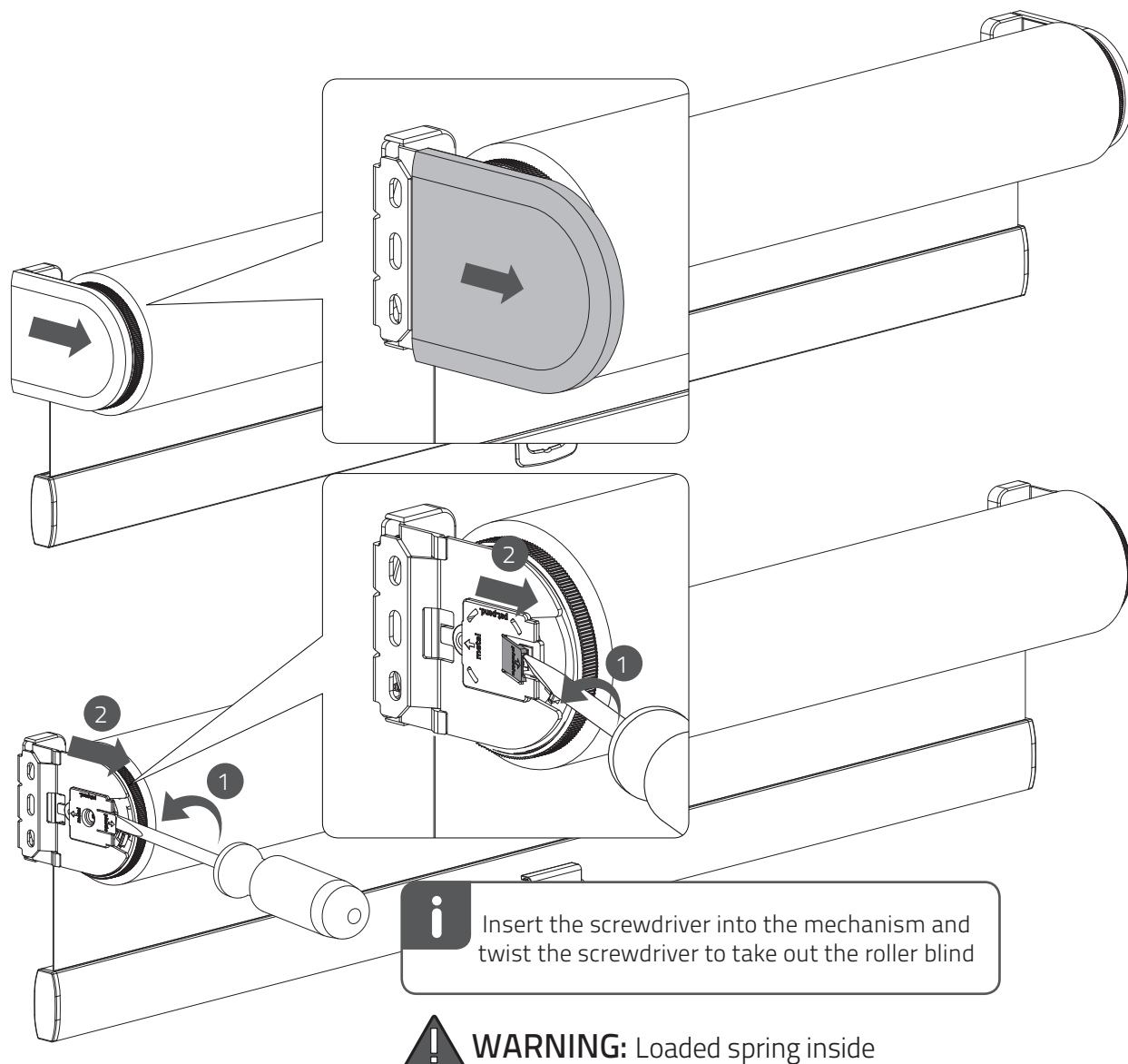
Rotate to raise the bottom bar



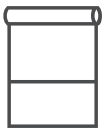
Rotate to lower the bottom bar



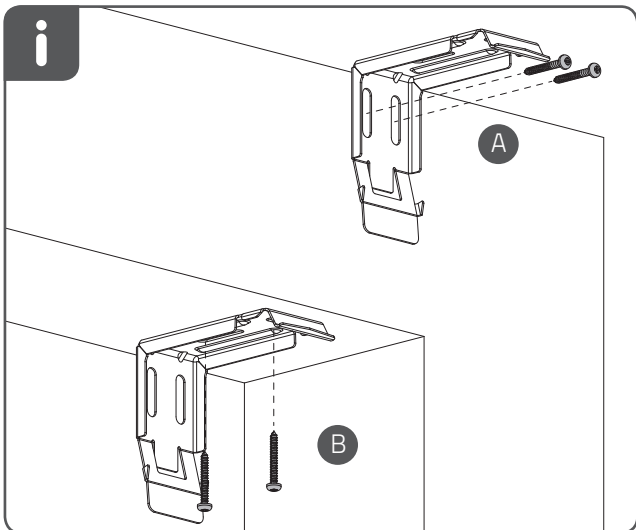
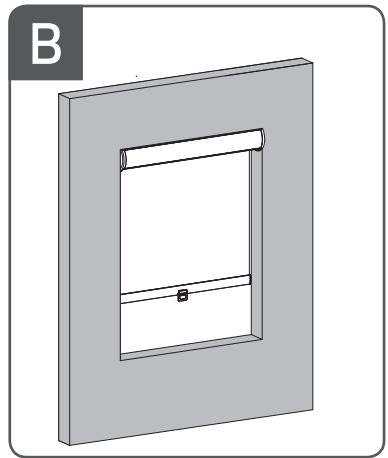
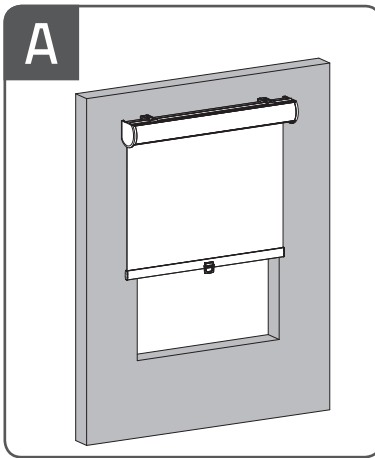
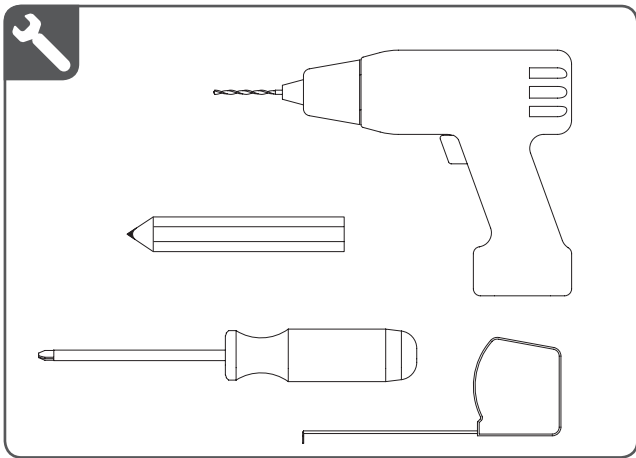
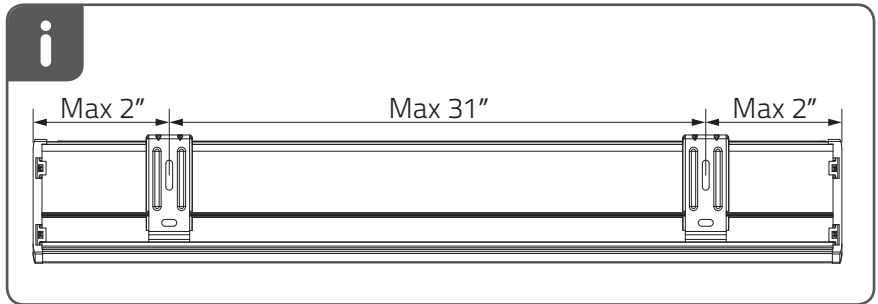
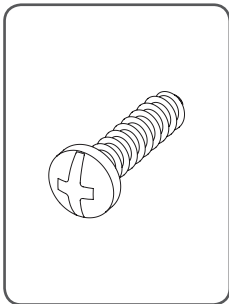
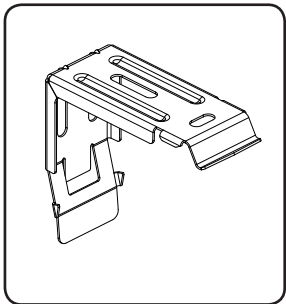
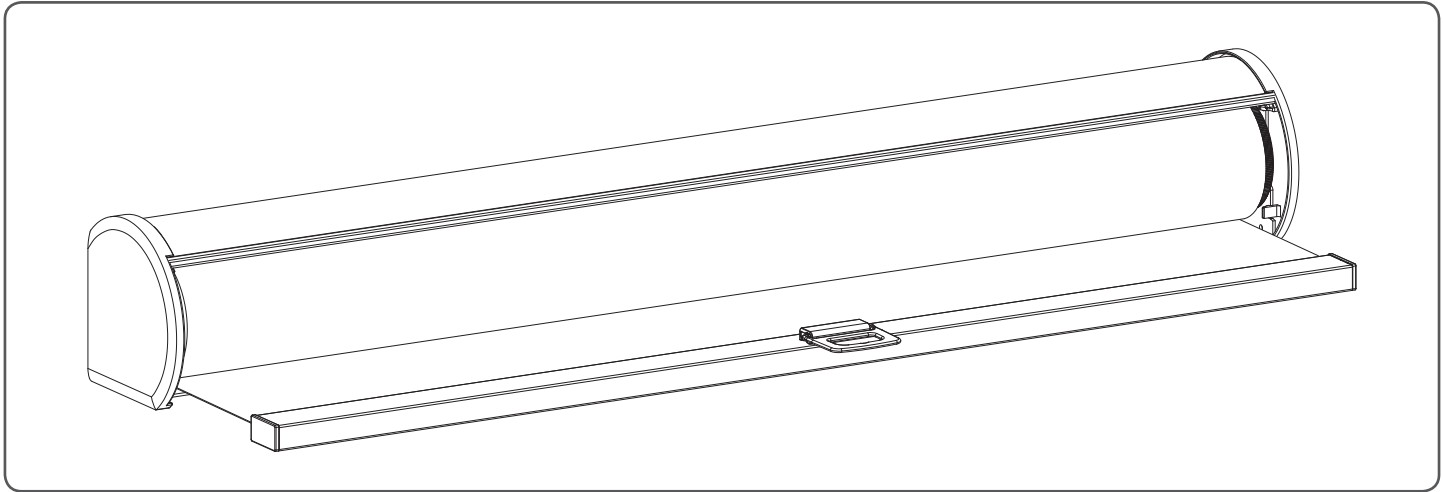
Removal



Do not go back to store for support and replacement parts,
but call 1-800-575-2756
Mon-Fri 8am to 11pm EST
Sat-Sun 10am to 7pm EST



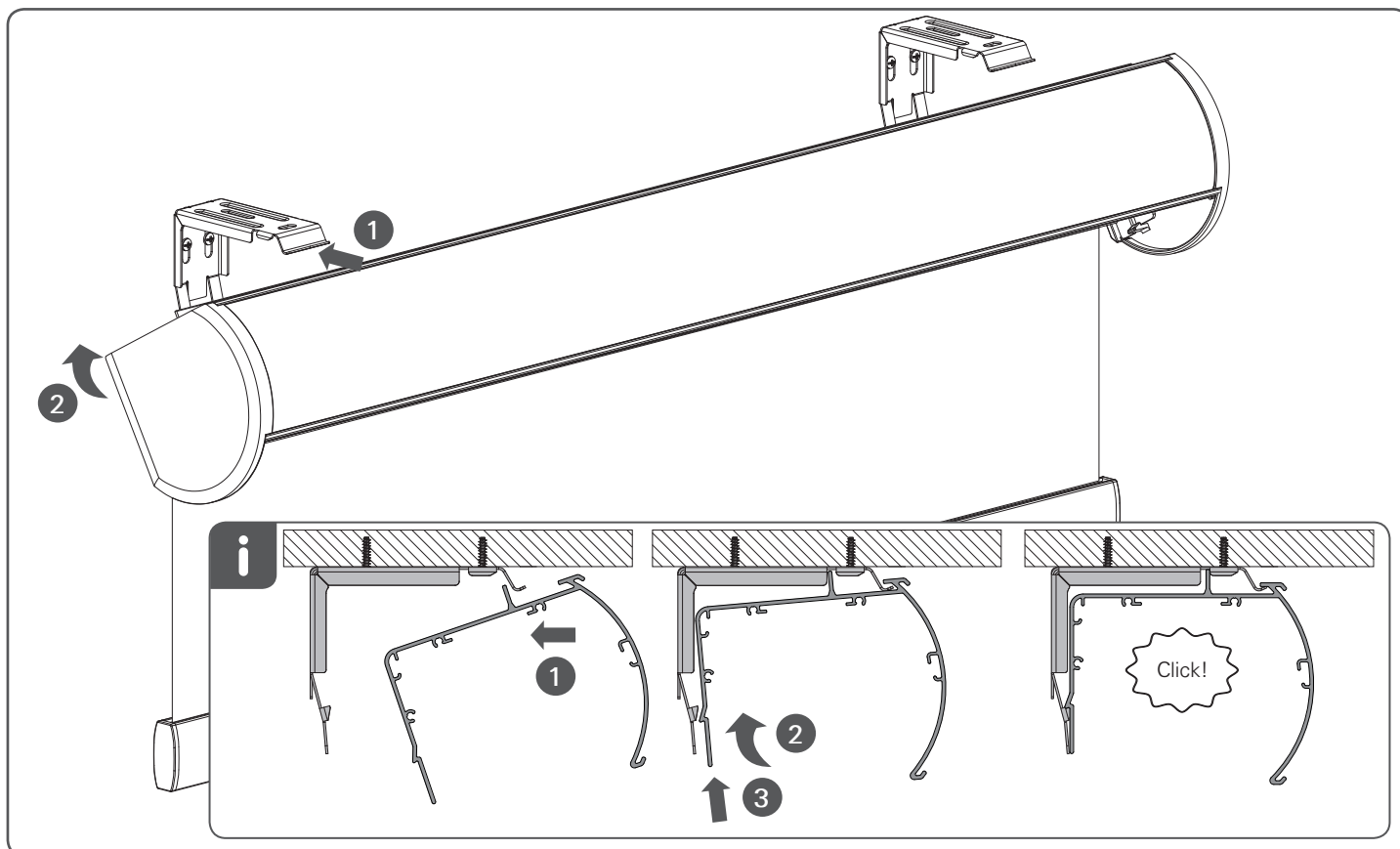
Semi-Open Spring



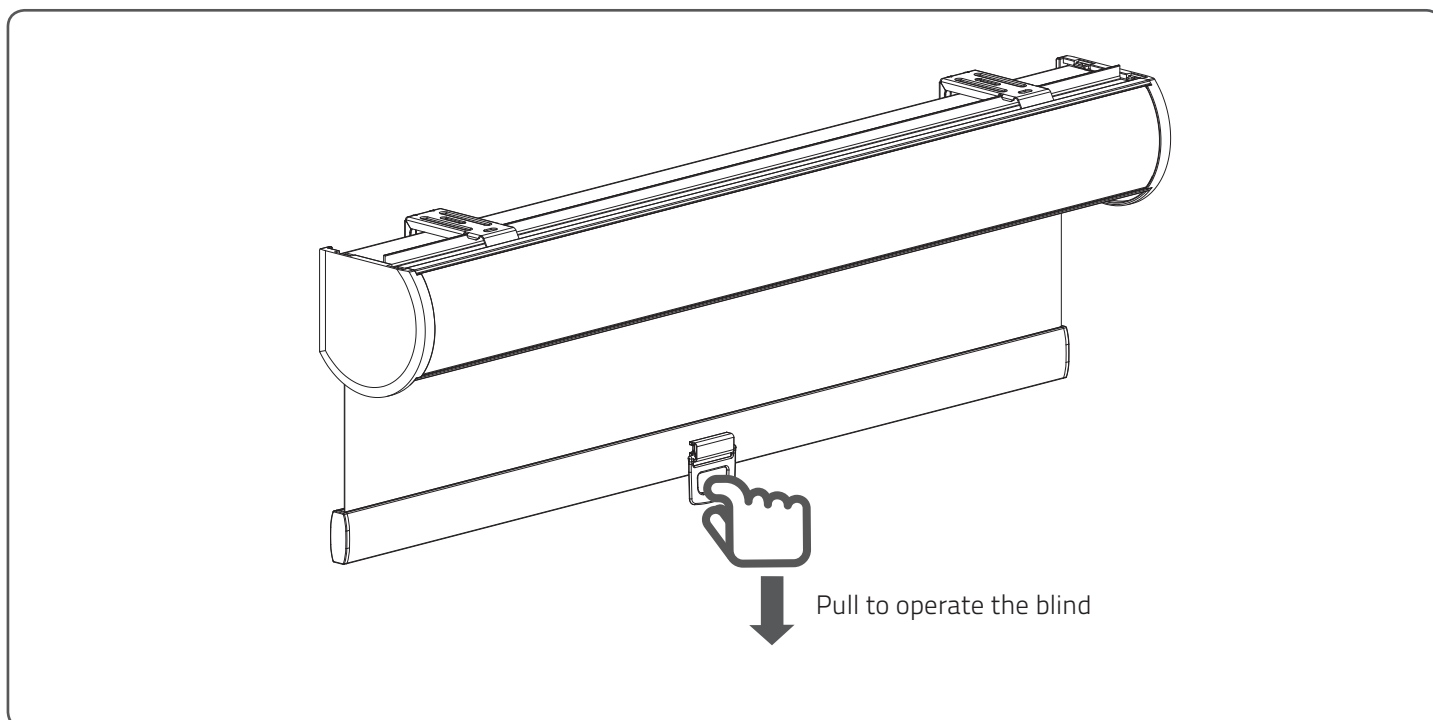
rtube.nl/red999

MN180024_20180531

Installation



Operation

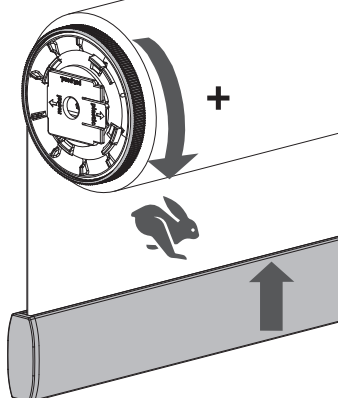


MN180024_20180531

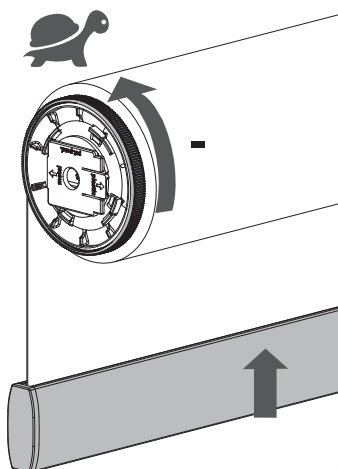


Adjust spring tension

Rotate to increase the lifting speed

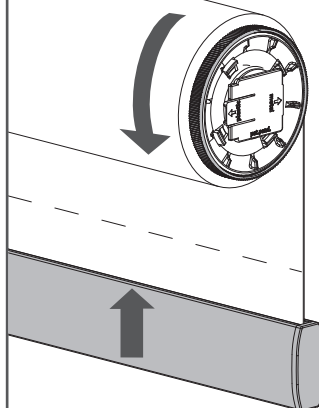


Rotate to lower the lifting speed

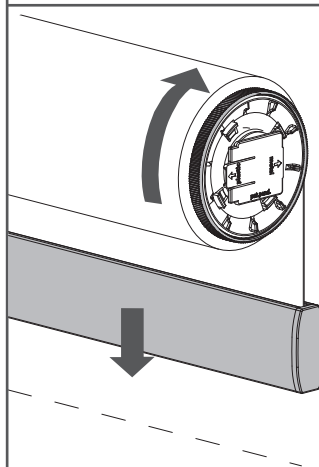


Adjust top limit

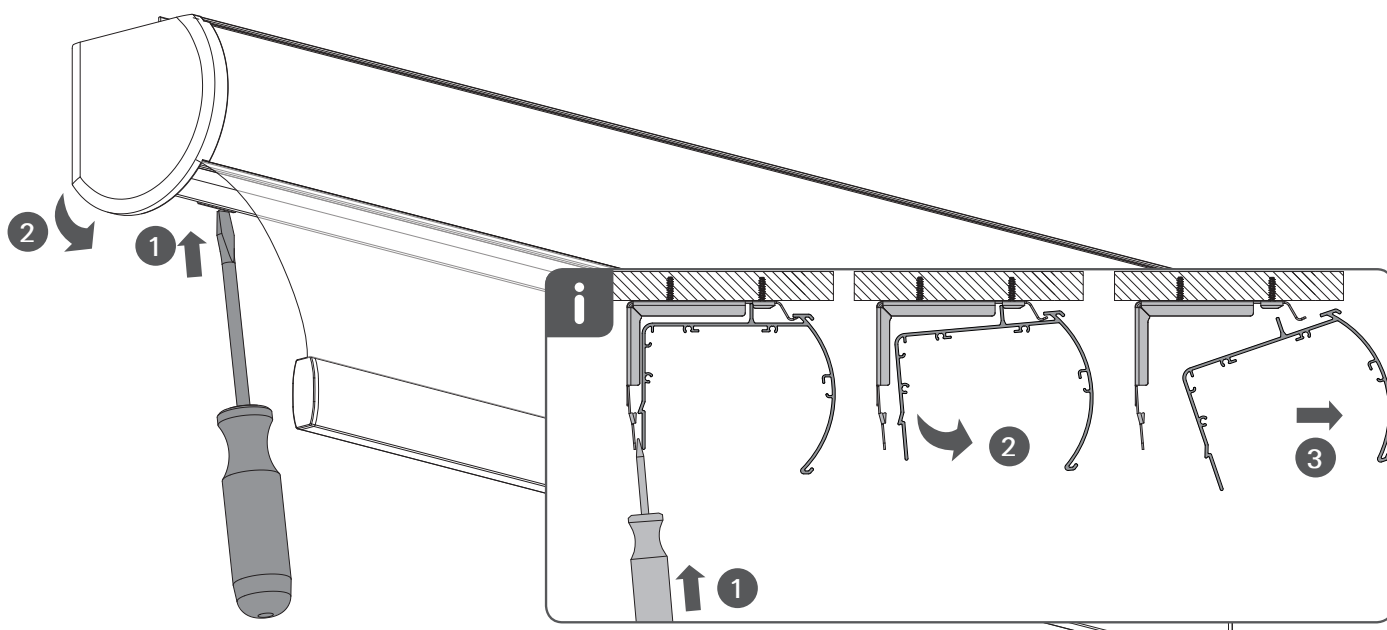
Rotate to raise the bottom bar



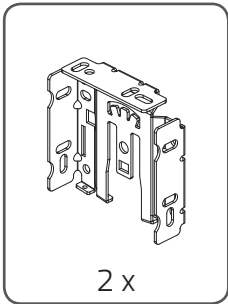
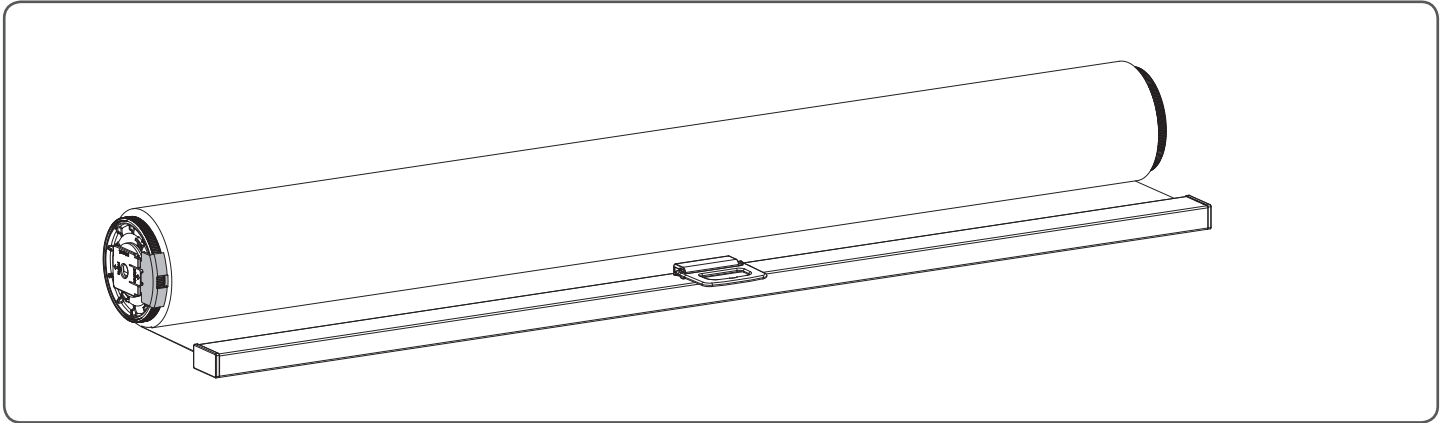
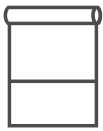
Rotate to lower the bottom bar



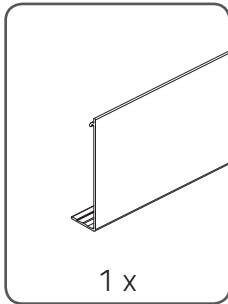
Removal



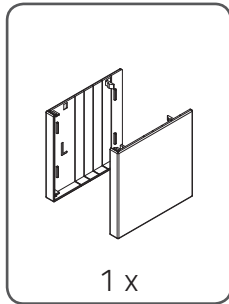
Do not go back to store for support and replacement parts,
but call 1-800-575-2756
Mon-Fri 8am to 11pm EST
Sat-SUN 10am to 7pm EST



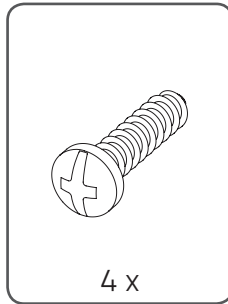
2 x



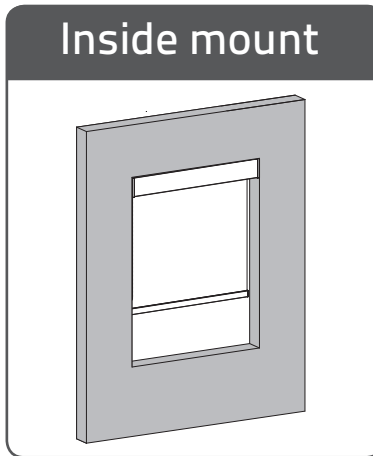
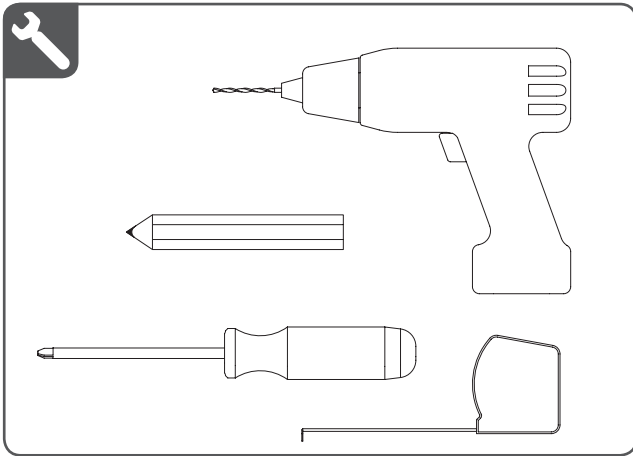
1 x



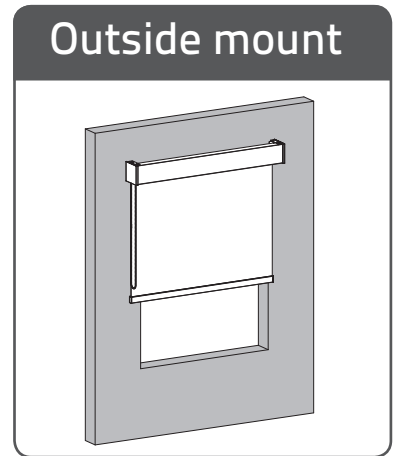
1 x



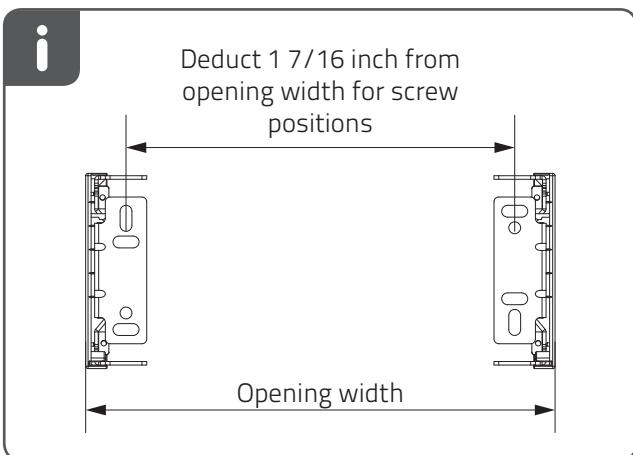
4 x



Inside mount

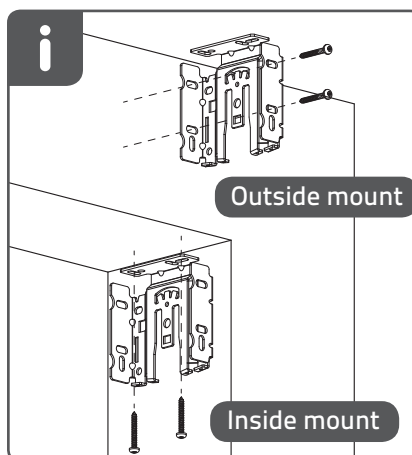


Outside mount



Deduct 1 7/16 inch from opening width for screw positions

Opening width



Outside mount

Inside mount

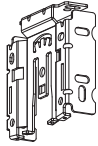


QR

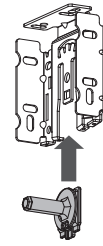
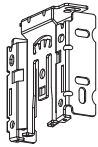
rtube.nl/red1001

Installation

1

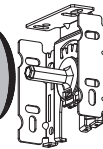


2

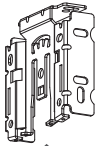


i

First mount pin side

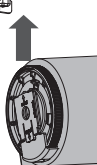


3

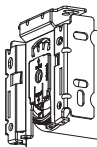


i

Then mount mechanism side

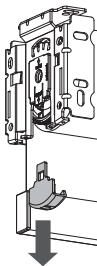


4



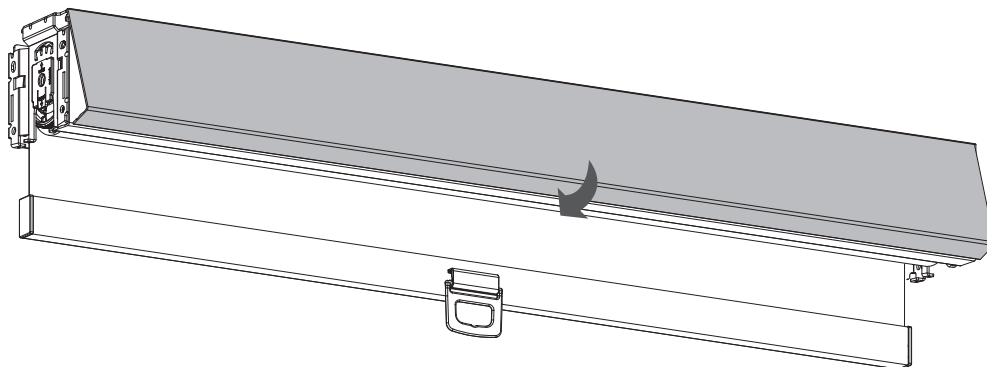
i

Locking clip pop's off when installing

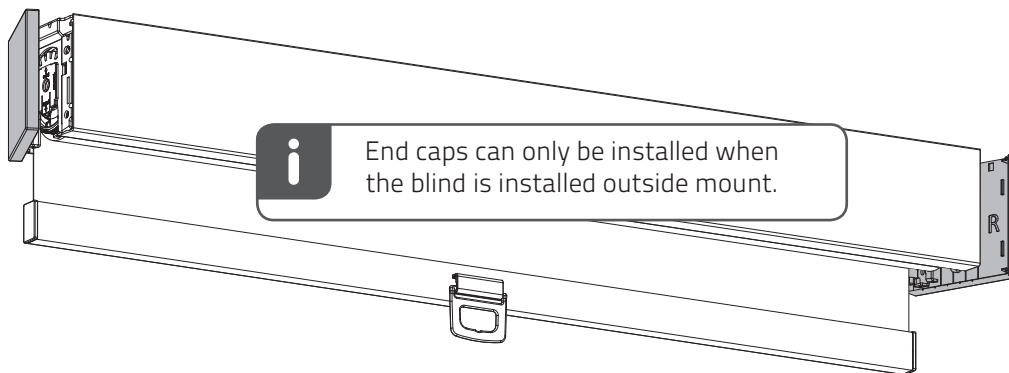


MN180028_20180713

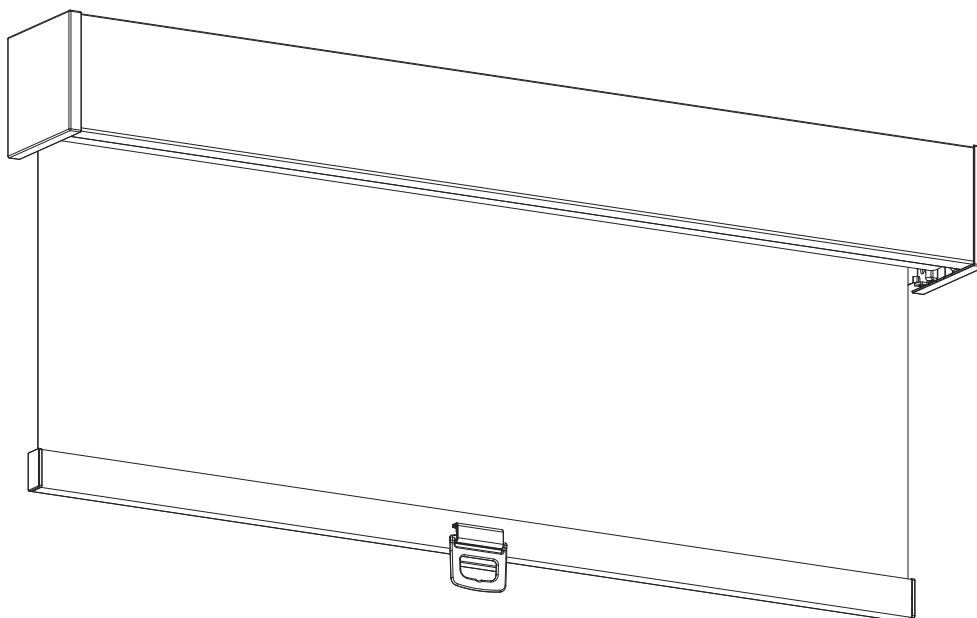
5



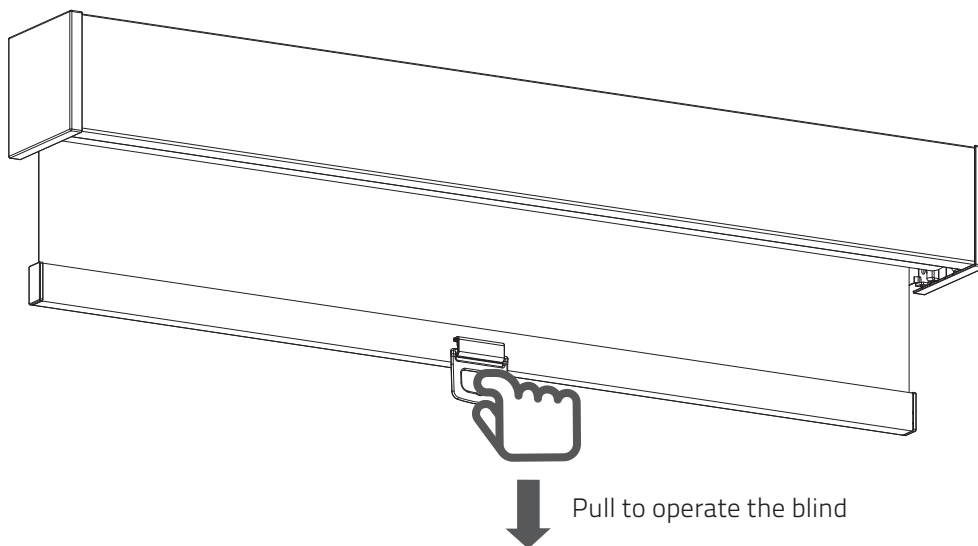
6



7

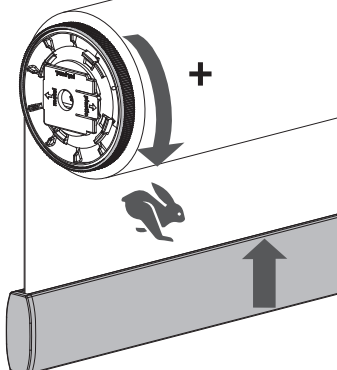


8

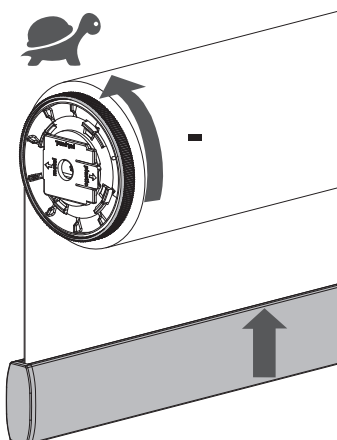


Adjust spring tension

Rotate to increase the lifting speed

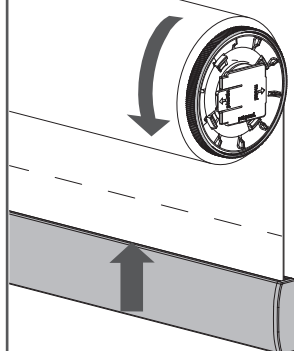


Rotate to lower the lifting speed

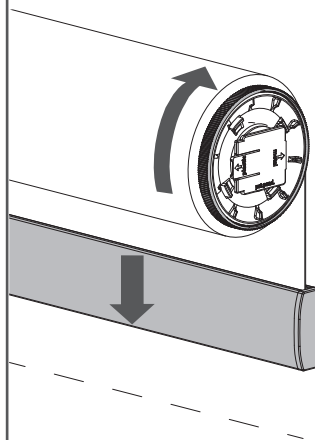


Adjust top limit

Rotate to raise the bottom bar



Rotate to lower the bottom bar



Do not go back to store for support and replacement parts,
but call 1-800-575-2756
Mon-Fri 8am to 11pm EST
Sat-Sun 10am to 7pm EST

COCOON
by Coulisse

MN180028_20180713

Fabrication Florida Venture
6600 NW 12th Avenue, Suite 201
Fort Lauderdale, FL 33309