

## Installation Instructions

### Cordless



### Getting Started




Remove the shade from the package. Save the packaging until the shade is installed and working to your satisfaction.

### Recommended Tools

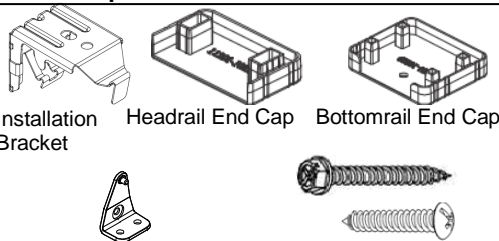
- Measuring Tape
- Pencil
- Level
- Screwdriver
- Power drill (1/4" hex driver and drill bit)



You will need to use the following fasteners for your particular mounting surface.

Surface	Fastener
Wood	#8 x 1 1/4" Screws (Provided) 
Drywall/Plaster	Wall Anchors, Expansion Bolts (Not Provided) 
Metal	Sheet Metal Screws (Not Provided) 

### Check Component / Hardware:



Hold Down bracket(optional)

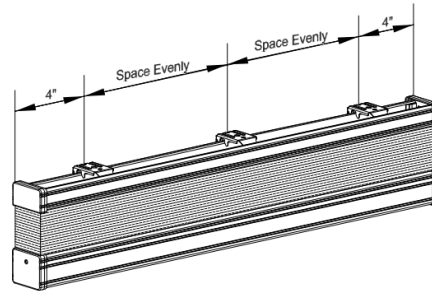
Screws

### Hardware Standard Quantity

Order Width (X)	X < 27"	27" ≤ X ≤ 60"	X > 60"
Installation Bracket	2	3	4
1 1/4" Screw	4	6	8
2" Screw for Installation Bracket with spacer	4	6	8
3/4" Screw for Hold Down Bracket	Hold Down Bracket qty*2		
Hold Down Bracket (Optional)	2	2	2
Spacer (Optional)	2	3	4

### Step 1: Bracket Installation

. Use a level to ensure all brackets are in alignment. Proper alignment of brackets will make installation easier.

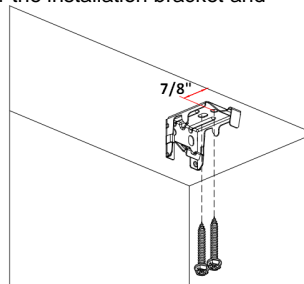


. Measure 4" from both ends of the headrail and mark the bracket location on the mounting surface (applies to both inside and outside mount installation).

### Inside Mount

For shade to operate properly when inside mounted, check to make sure there is enough depth clearance for the installation bracket and no obstructions.

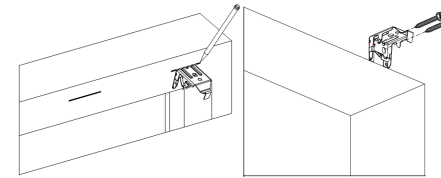
If you would like your shade to be flush with the wall, the distance from the wall to center of 1st screw hole needs to be 7/8".



### Outside Mount

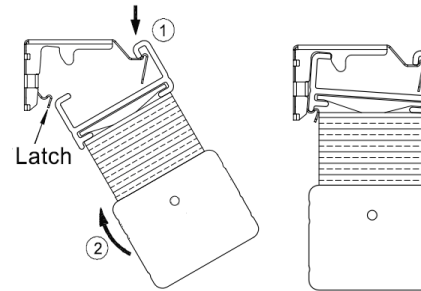
The bottom of the installation bracket can be flush with top edge of window opening or higher.

Make sure all brackets are at the same level.

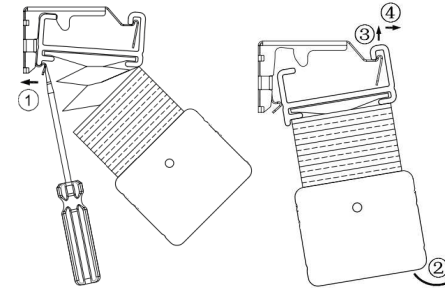


### Step 2: Install and Remove the Shade

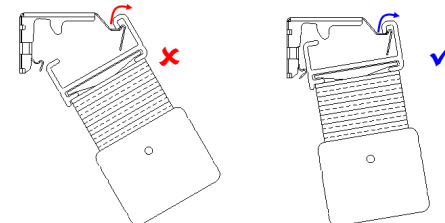
Insert the headrail with an angle and hook the front of the headrail to the bracket. Rotate and push the headrail upward, then release after snapping into place. See steps 1~2.



Fully raise the shade if you want to remove. Remove the shade by pushing the latch back. Release the shade by rotating the headrail towards you and lifting upward to unhook the rail from the bracket. See steps 1~4.



\*Note: After pushed the latch back, try to take down the shade vertically.



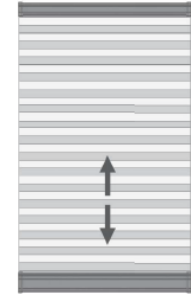
### Step 3: Install Hold Down Bracket

Use two 3/4" screws to secure each hold down bracket.



### Operate the Shade

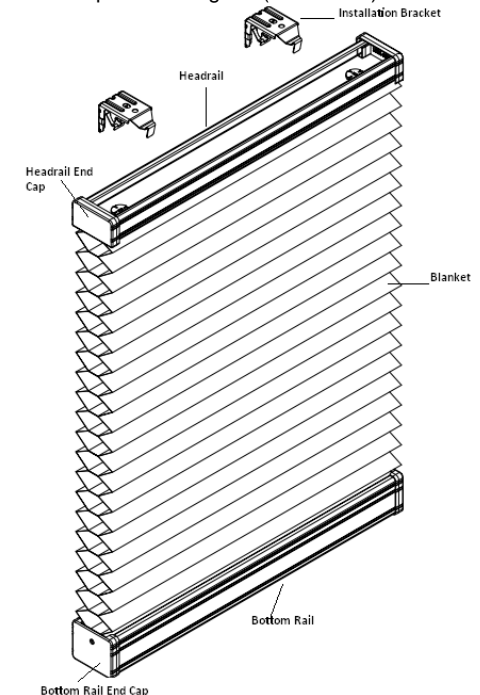
To lower the shade, gradually pull down on the bottom rail.



To raise the shade, gradually lift up on the bottom rail.

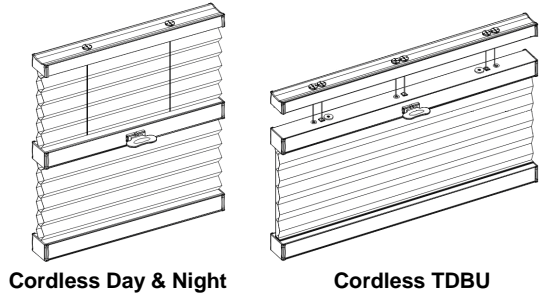
### Cleaning

Routine cleaning will help maintain the beauty of your shade. The shade can be cleaned by using a duster, vacuumed with a low suction hand-held vacuum, cleaned ultrasonically (specify that a mild solution must be used and that the headrail should never be immersed in liquid), or dampen a clean cloth with a warm water and mild detergent solution to dab the spot until it's gone (do not rub!).



N300496-2  
65101-10222-B

**Installation & Maintenance Instructions**



**Getting Started**

NOTE: Prior to installation, please make sure your hands are clean and free from any dirt or oil that could cause damage to the fabric.

**Recommended Tools**

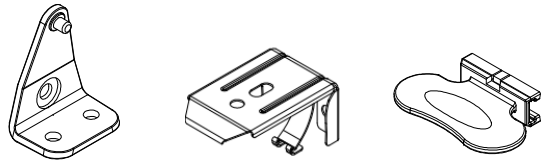
- Measuring Tape
- Pencil
- Level
- Screwdriver
- Power drill (1/4" hex driver and drill bit)



You will need to use the following fasteners for your particular mounting surface.

Surface	Fastener
Wood	#8 1 1/4" Screws (Provide) #6 3/4"screws
Drywall/Plaster	Wall Anchors, Expansion Bolts (Not Provide)
Metal	Sheet Metal Screws (Not Provide)

**Check Component / Hardware:**



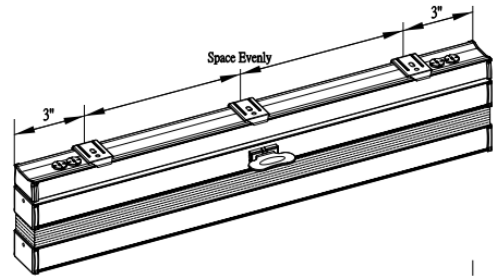
Hold Down bracket (optional)    Installation Bracket    Handle

**Hardware Standard Quantity**

Order Width (X)	X< 27"	27" ≤ X ≤ 60"	X >60"
Installation Bracket	2	3	4
Handle	1pcs for X ≤ 50" 2pcs for X ≤ 50"		
Hold Down Bracket (Optional)	2	2	2
Spacer (Optional)	1pc for extend distance 10mm 2pcs for extend distance 18mm		
1 1/4" Screw for Installation Bracket	4	6	8
2" Screw for Installation Bracket with spacer	4	6	8
3/4" Screw for Hold Down Bracket	4	4	4

**Step 1: Bracket Installation**

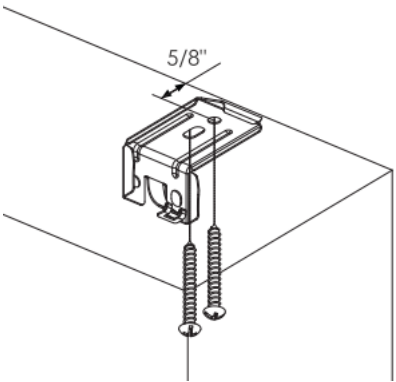
- Use a level to ensure all brackets are in alignment.



. Measure 3" from both ends of the headrail and mark the bracket location on the mounting surface (applies to both inside and outside mount installation).

**Inside Mount**

For shade to operate properly when inside mounted, check to make sure there is enough depth clearance for the installation bracket and no obstructions.

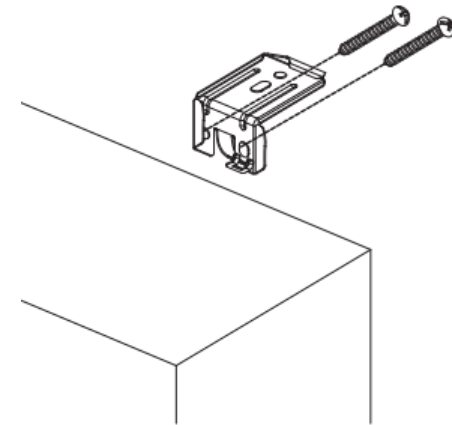


If you would like your shade to be flush with the wall, the distance from the wall to center of 1st screw hole needs to be 5/8".

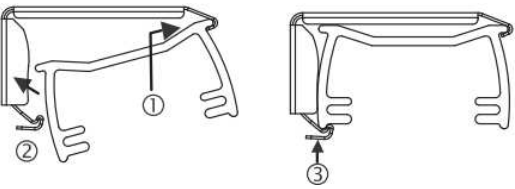
**Outside Mount**

Hold the bracket against the wall. Mark a line at every bracket location (shown on the picture).

Make sure the lines are level with each other.

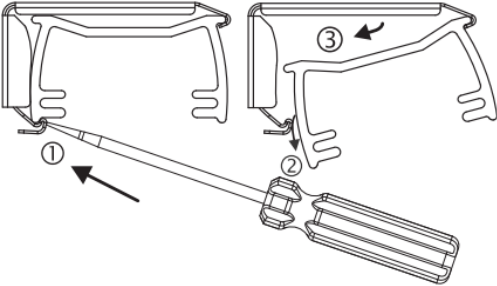


**Step 2. Install and Uninstall the Shade**



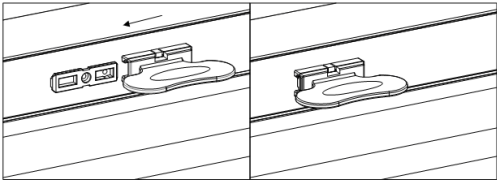
Insert the headrail with an angle facing the window; hook in with the bracket front then push it upward to snap it into the bracket.

Fully raise the shade that you want to remove. Remove the shade by pushing the latch back. Release the shade by rotating the headrail towards you and lifting upward to unhook the rail from the bracket. See steps 1 to 3.



**Step 3: How to Install Shade Handle**

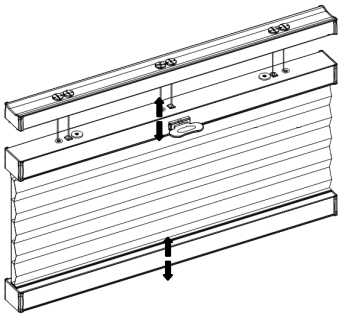
Slide the handle onto the plastic piece that is pre-attached to the rails.



**Step 4. Operate the Shade**

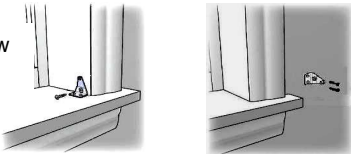
To lower the shade, gradually pull down on the bottom rail.

To raise the shade, gradually lift up on the bottom rail.



**How to Install Hold Down Brackets (optional)**

Use #6 3/4" screw to secure each bracket.



**Cleaning the Shade**

Routine cleaning will help maintain the beauty of your shade. The shade can be cleaned by using a duster, vacuumed with a low suction hand-held vacuum, cleaned ultrasonically (specify that a mild solution must be used and that the headrail should never be immersed in liquid), or dampen a clean cloth with a warm water and mild detergent solution to dab the spot until it's gone (do not rub!).

**Q & A**

Q: My shade will not snap into the mounting brackets, what should I do?  
A: Check that the mounting brackets are aligned

Q: I can't fully raise my shade, what should I do?  
A: Repeatedly fully extend your shade, then raise your shade.

**LIMITED WARRANTY INFO**  
**GARANTIA LIMITADA DE POR VIDA**

**NIEN WINDOW FASHIONS® LIMITED WARRANTY INFO**

Nien Window Fashion® products are warranted to be free from defects in materials or workmanship as long as the original purchaser owns the blind/shade(s). To obtain warranty service contact the dealer with whom the product was purchased for warranty assistance, contact Nien Window Fashion® Customer Service at 1-800-666-1779 or visit <http://www.nienmade.com/contactus.aspx>

This warranty does not cover the following:

1) Any damage caused by unauthorized repairs, improper installation, cleaning, maintenance. 2) Normal wear and tear. 3) Accidents, alterations, misuse, abuse to the product, act of God. 4) Exposure to elements, excessive humidity, fading, discoloration over time. 5) Shipping charges, any removal and reinstallation cost.

