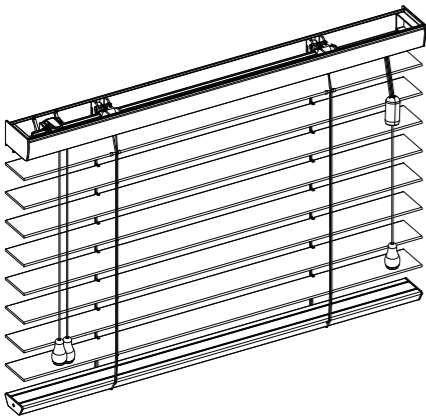


Installation & Maintenance Instructions



Smart Privacy

Getting Started

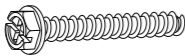


Remove the blind from the package. Be sure to keep the packaging until the blind operates to your satisfaction. Please take a moment to review the following installation guide for proper installation.

Recommended Tools

- Measuring Tape
- Pencil
- Level
- Screwdriver
- Power drill (1/4" hex driver and drill bit)

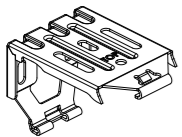


You will need to use the following fasteners for your particular mounting surfaces:

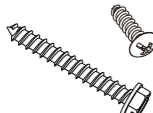
Mounting Surface	Fastener
Wood	1 1/4" Hexagonal Head Screw (Provided) 
Drywall/Plaster	Wall Anchors, Expansion Bolts (Not Provided) 
Metal	Sheet Metal Screws (Not Provided) 

Check Hardware

Check your package for contents needed for proper installation.



Installation bracket



Screws



Hold Down Bracket (Optional)



Cord Cleat

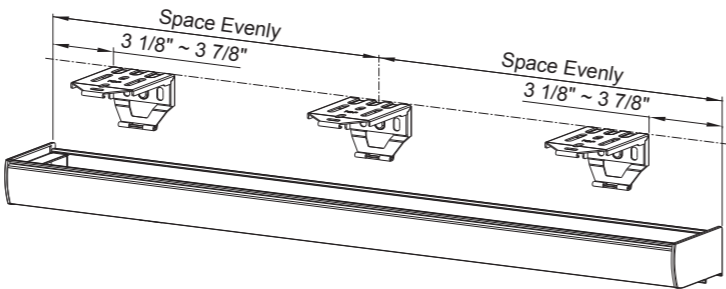
Hardware Quantity Standard

Blind Width (X)	X ≤ 37"	37" < X ≤ 47"	47" < X ≤ 75"	75" < X ≤ 120"
Installation Bracket	2	3	4	5
Hold Down Bracket(Optional)	2			
3/4" Screw for Cord Cleat & Hold Down Bracket	Hold Down Bracket Qty*2 + Cord Cleat Qty			
Spacer Block(Optional)	1pc for extend distance 10mm, 2pcs for extend distance 18mm			
1 1/4" Screw for Installation	4	6	8	10
2" Screw for Installation (when choose spacer block)	4	6	8	10

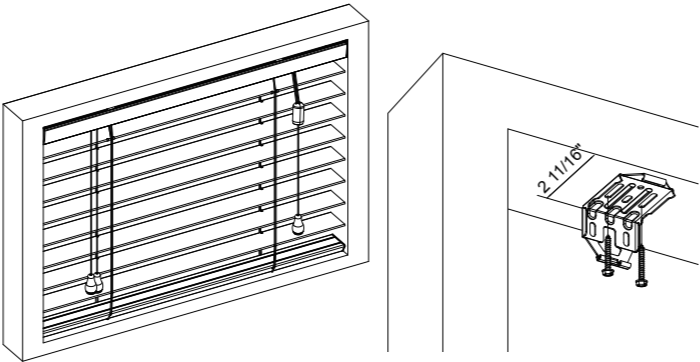
Note: You may find more hardware parts than you actually need. In that case, feel free to set them aside for future use.  
Cord Cleat is included.

Step1.Install Brackets

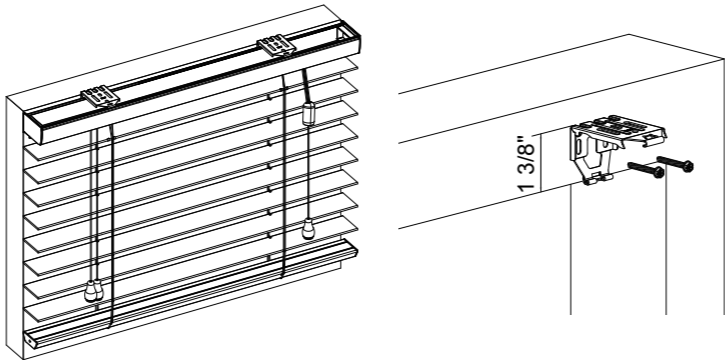
Mark the bracket location on the mounting surface.  
For easy installation and proper blind operation, use a level to ensure all brackets are alignment.



Inside Mount



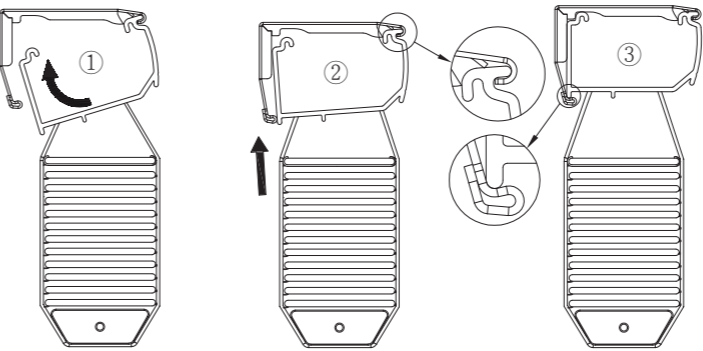
Outside Mount



- Recommended: Use a level to double check the brackets are at the same level.

Step 2. Install the Headrail

 For proper installation, start with attaching the front rail to the bracket.



★ Congratulations! You have finished installing the blind.

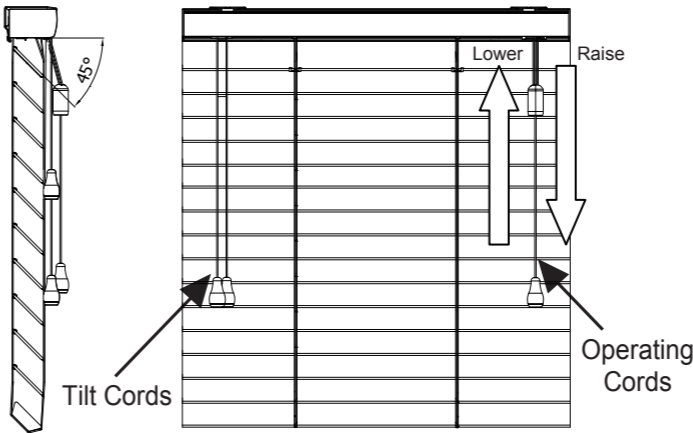
Operate Your Blind

Tilt Cords

- Each cord with individual tassel. Simply pull on all tilt cords as a group to control the angle of your slats.

Operating Cords

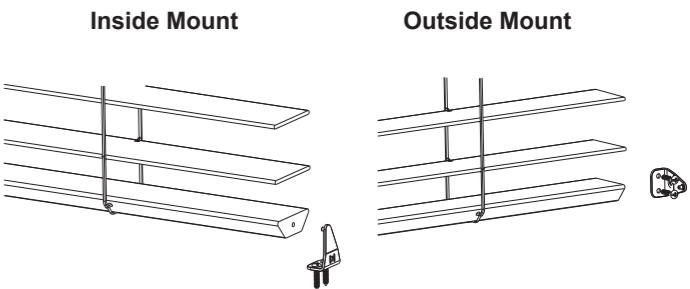
- Pull the cord to raise and lower the blind. The slats need to be open when lowering the blind. **When raising the blind, we recommend that you gently tilt the slats toward you before raising the blind.** The proper way to raise the blind is to support bottom rail with your hand while pulling on the cords (about 45 degree). Pull the cord toward the outside of the blind to lock the position. Pull toward the center to release the blind from the locked position.  
**There are 2 easy ways for you to line up the SmartPrivacy™ slats.**  
**1. Fully raise the blind and tap on both ends until slats are lined up. OR**  
**2. Raise and lower the blind several times and the blind will self-align.**



Additional Attachments

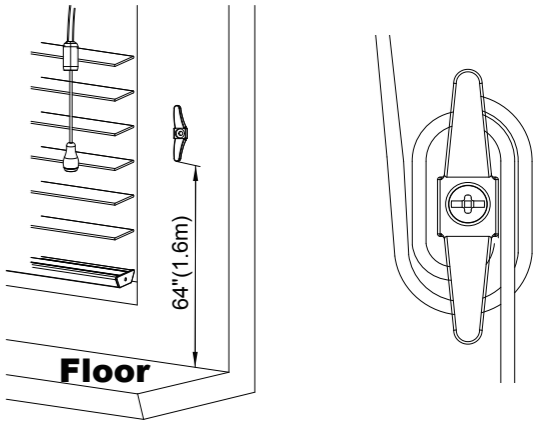
Hold down brackets

- Attach the hold-down brackets against a flat surface, horizontally or vertically, parallel to the bottom rail. Make sure the protruding area is aligned with the hole on the side of the bottom rail. Secure the hold-down bracket into the bottom rail on both sides to keep blinds in desired location.



Cord Cleat

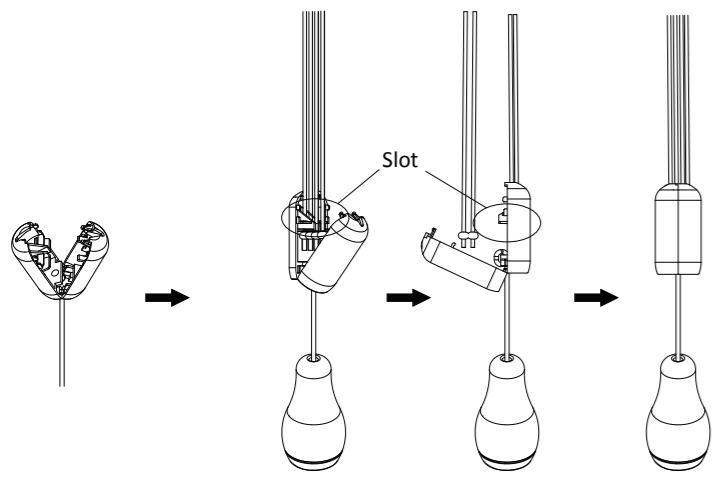
- Install the cord cleat on the wall. Wrap the operating cords around the cord cleat for child safety. Always use the cord cleat to keep cords out of the reach of children. The cleat should be installed more than 64" (1.6 m) from the floor.



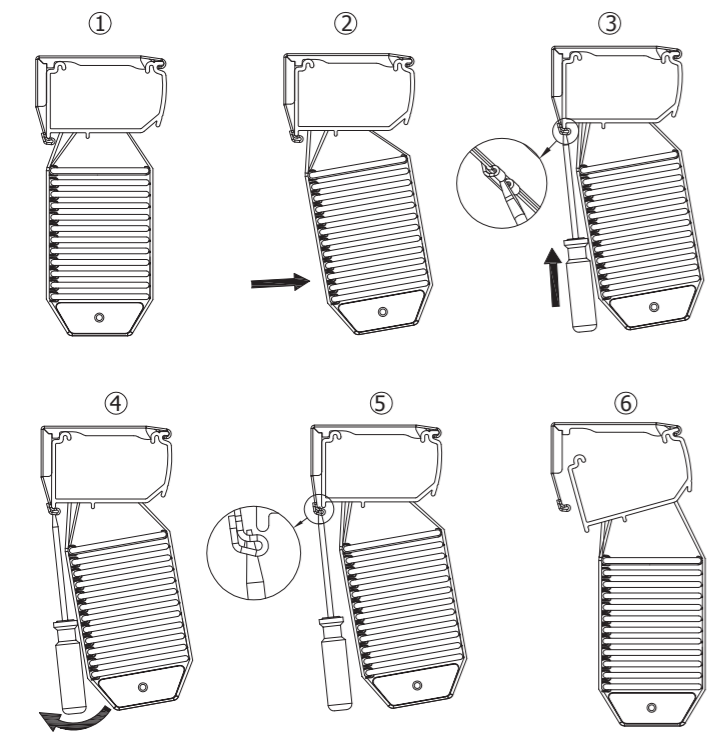
How to Reassemble Cord Release Device

Our blind comes equipped with a cord release device that prevents child strangulation. Should the cord release device come apart, please refer to below steps:

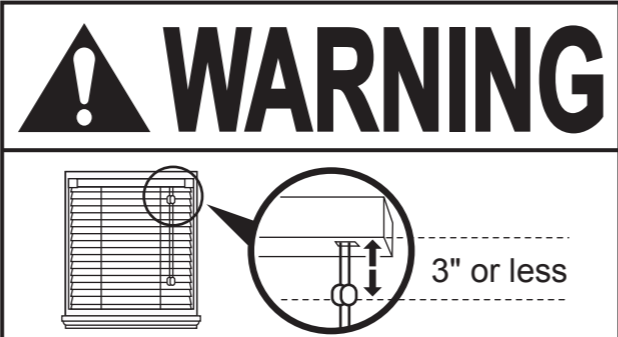
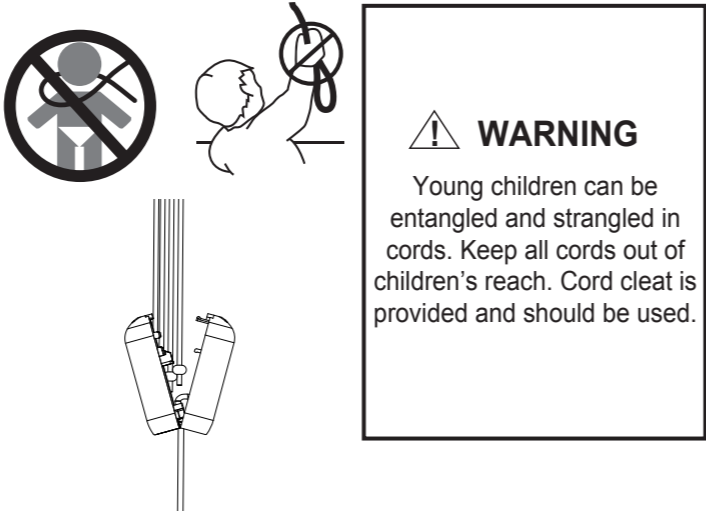
- 1. Open cord release device entirely.
- 2. Align all operating cords and slide them into the slot of cord release device.
- 3. Snap cord release device together to close.



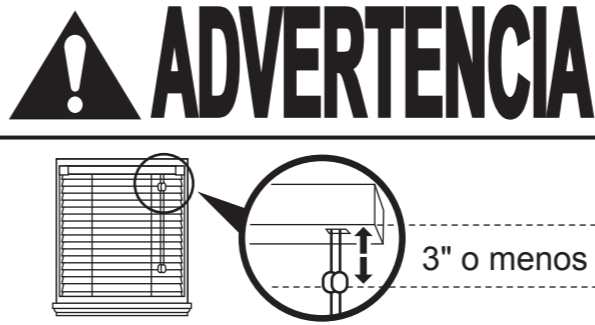
Remove the Blind



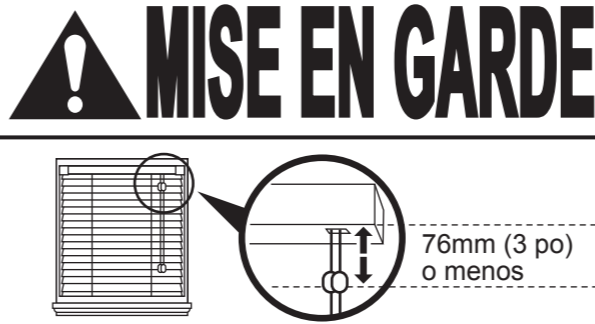
CHILD SAFETY



- Inner cord stop devices can reduce this risk if positioned correctly on the operating cords.
- If inner cord stop devices are more than 3" (76 mm) below the headrail when the blind is fully lowered, move them closer by following the inner cord stop device adjustment instructions.



- Los dispositivos de paro de la cuerda interna pueden disminuir este riesgo si están situados correctamente en el halado de las cuerdas.
- Si los dispositivos de paro de cuerda interna son más de 3 pulgadas (76 mm) por debajo del riel superior cuando está bajada opletamente la persiana, muévalos siguiendo las instrucciones del ajuste de paro de cuerda interna.



- Les dispositifs d'arrêt des cordons intérieurs peuvent diminuer ce risque s'ils sont placés correctement sur les cordons.
- Si les dispositifs d'arrêt des cordons sont situés à plus de 76 mm (3 po) en store est complètement baissé, rapprochez-les en suivant les instructions de réglage du dispositif d'arrêt du cordon intérieur.



- Always keep cords out of children's reach.
- Move cribs, playpens, and other furniture away from cords and bead chains. Children can climb furniture to get to cords.
- Always wrap the cords around the cleats in a figure eight, up high, out of reach of children.

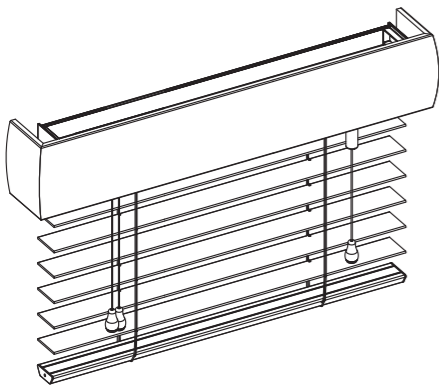


- Gardez toujours les cordons hors de portée des enfants.
- Éloignez les lits et parcs de bébé, ainsi que toute autre pièce de mobilier, des cordons et des chaînettes. Un enfant peut grimper sur un meuble pour atteindre les cordons.
- Enroulez toujours les cordons en noeud en huit autour du taquet de cordon, placé haut et hors de portée des enfants.

Cleaning Instructions

Perform periodic simple cleaning of your blind will keep your blind looking its best for the years to come. There are two ways to clean. You can dust it with a duster or dusting mitten, or simply use a soft cloth slightly moisten with lukewarm water to wipe down the slats. You can clean it with the blind hanging on the window, or you can take it down completely. By tilting the slats down but not fully closed, you will be able to clean most of the top surface of each slat. **Do not use detergent or abrasive cleaning solutions to clean the blind since it will likely cause damage to the blind.**

Installation & Maintenance Instructions



SmartPrivacy® with Valance

Getting Started

Remove the blind from the package. Be sure to keep the packaging until the blind operates to your satisfaction. Please take a moment to review the following installation guide for proper installation.

Recommended Tools

- Measuring Tape
- Pencil
- Level
- Screwdriver
- Power drill (1/4" hex driver and drill bit)



You will need to use the following fasteners for your particular mounting surfaces:

Mounting Surface	Fastener
Wood	1 1/4" Hexagonal Head Screw (Provided) 
Drywall/Plaster	Wall Anchors, Expansion Bolts (Not Provided) 
Metal	Sheet Metal Screws (Not Provided) 

Check Hardware

Check your package for contents needed for proper installation.



Installation bracket



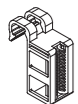
Screws



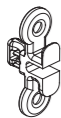
Cord Cleat



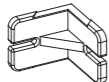
Hold Down Bracket (Optional)



Valance Clip Receptor



Valance Clip Plug



Valance Return Connector (Optional)

Hardware Quantity Standard

Blind Width (X)	X ≤ 37"	37" < X ≤ 47"	47" < X ≤ 75"	75" < X ≤ 96"
Installation Bracket	2	3	4	5
Cord Cleat	1			
Valance clip	2	3	4	5
3/4" Screw for Cord Cleat & Hold Down Bracket	Hold Down Bracket Qty*2 + Cord Cleat Qty			
1 1/4" Screw for Installation Bracket	4	6	8	10
2" Screw for Installation Bracket (when choose spacer block)	4	6	8	10
Hold Down Bracket(Optional)	2			
Valance Return Connector (optional)	2			
Spacer Block(Optional)	1pc for extend distance 10mm, 2pcs for extend distance 18mm			

Note: You may find more hardware parts than you actually need. In that case, feel free to set them aside for future use.

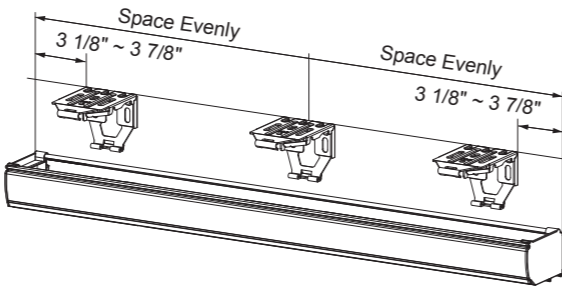
Cord Cleat is included.

Optional hardware parts, such as spacers and hold down brackets, are available upon request.

Valance Return Connector is provide only when returns are required.

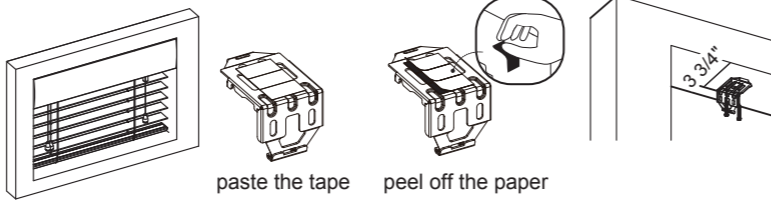
Step1.Install Brackets

Mark the bracket location on the mounting surface. For easy installation and proper blind operation, use a level to ensure all brackets are alignment.

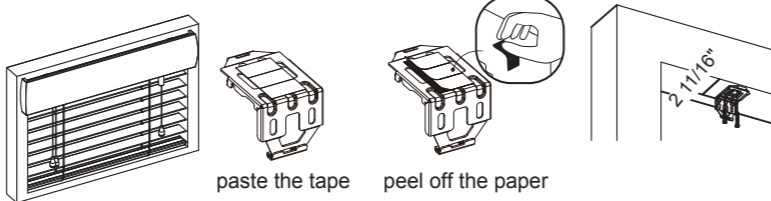


Allocate min. distance from wall face to the backside of the brackets. Paste the double-sided adhesive tape on the bracket, then peel off the paper and stick the bracket at the marked location. Use two 1 1/4" mounting screws to secure bracket. Use wall anchors for drywall or plaster wall.

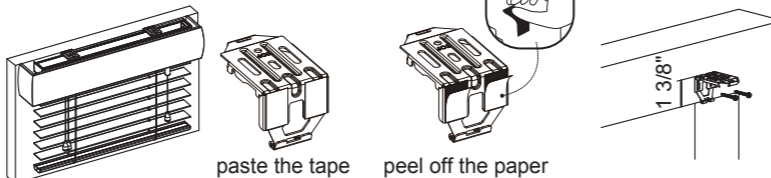
Inside Mount



Semi-inside Mount



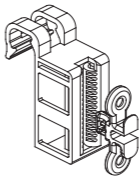
Outside Mount



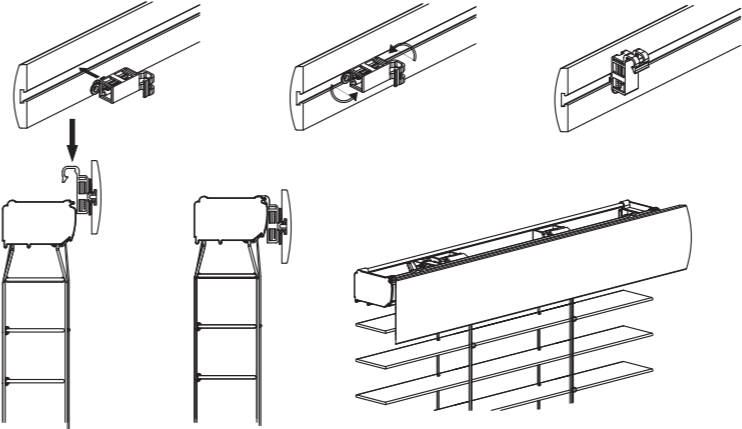
- Recommended: Use a level to double check the brackets are at the same level.

Step 2. Install the Valance Clip

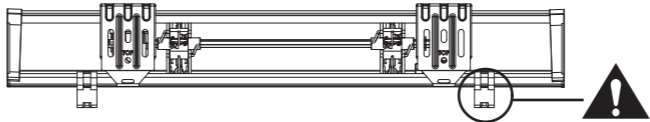
- Please attach the valance clip plug into the receptor. The insert position should be as the drawing.



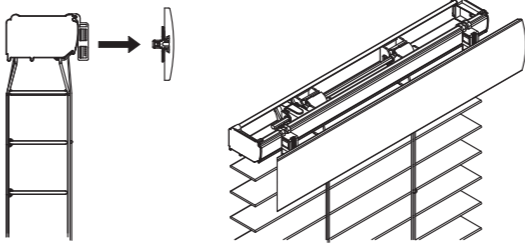
Attach the adjustable valance clip plug and receptor into the channel on the backside of the valance. Attach the valance return if needed. Hook the adjustable valance clip receptors onto the headrail and space them evenly.



**Make sure receptors are not in obstructive position with the drum support inside the headrail and the brackets.**



Remove the valance together with valance clip plug away from the receptors before install the blind. **Leave the receptors on the headrail.**

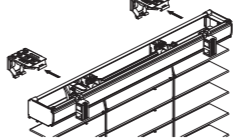


Step 3. Install the Blind

- Make sure the adjustable valance clip receptors are attached on the headrail before installing the headrail.**

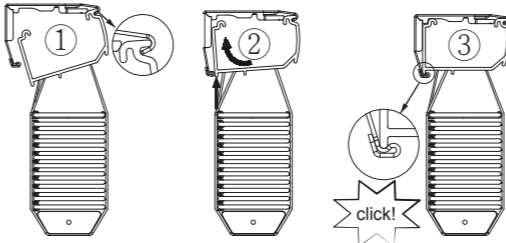


- Install the Blind as the drawing

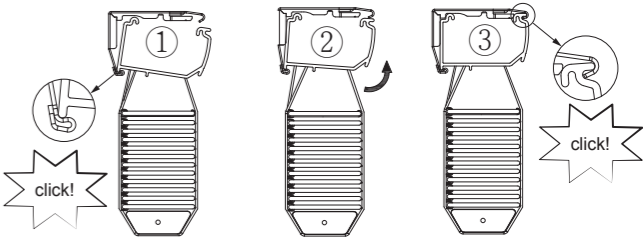


Choose one of below ways to attach the headrail to bracket.

- Start with attaching the front of the headrail to the bracket first.

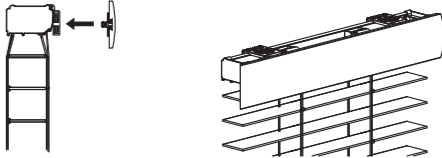


- Start with attaching the back of the headrail to the bracket first.

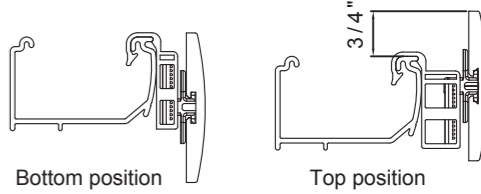


Step 4. Attach the Valance

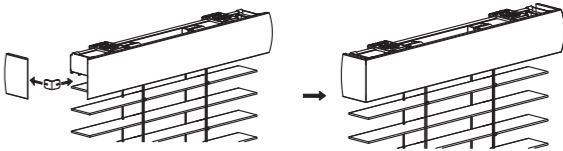
Attach the valance to the headrail by inserting the plugs into the receptors.



- For Outside mount, the valance position can be adjusted as below drawing.

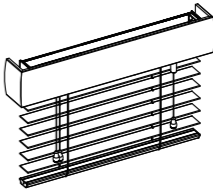
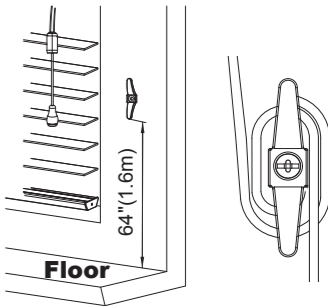


Please install the valance return to valance by Valance return connector if needed.



Cord Cleat

- Install the cord cleat on the wall. Wrap the operating cords around the cord cleat for child safety. Always use the cord cleat to keep cords out of the reach of children. The cleat should be installed more than 64" (1.6 m) from the floor.



★ **Congratulations!**  
**You have finished installing the blind.**

Operate Your Blind

Tilt Cords

- Each cord with individual tassel. Simply pull on all tilt cords as a group to control the angle of your slats.

Operating Cords

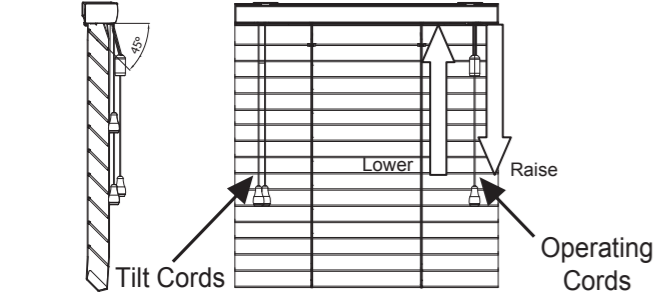
- Pull the cord to raise and lower the blind. The slats need to be open when lowering the blind. **When raising the blind, we recommend that you gently tilt the slats toward you before raising the blind.** The proper way to raise the blind is to support bottom rail with your hand while pulling on the cords (about 45 degree). Pull the cord toward the outside of the blind to lock the position. Pull toward the center to release the blind from the locked position.

There are 2 easy ways for you to line up the SmartPrivacy® slats.

1. Fully raise the blind and tap on both ends until slats are lined up.

OR

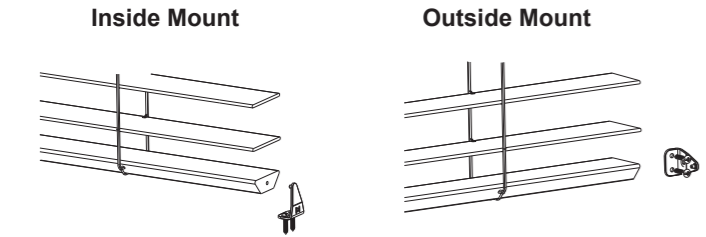
2. Raise and lower the blind several times and the blind will self-align.



Additional Attachments

Hold down brackets (Optional)

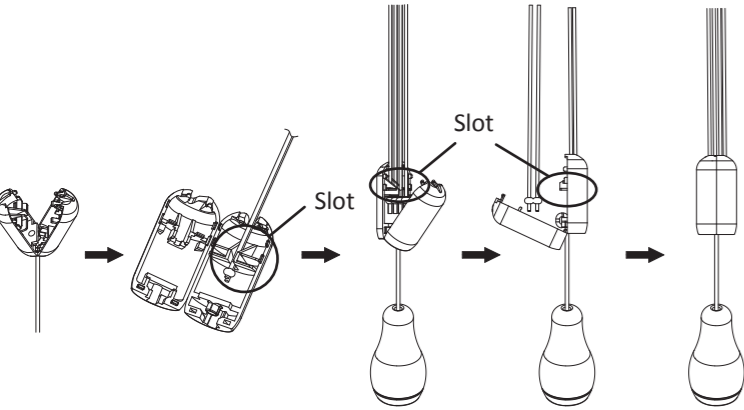
- Attach the hold-down brackets against a flat surface, horizontally or vertically, parallel to the bottom rail. Make sure the protruding area is aligned with the hole on the side of the bottom rail. Secure the hold-down bracket into the bottom rail on both sides to keep blinds in desired location.



How to Reassemble Cord Release Device

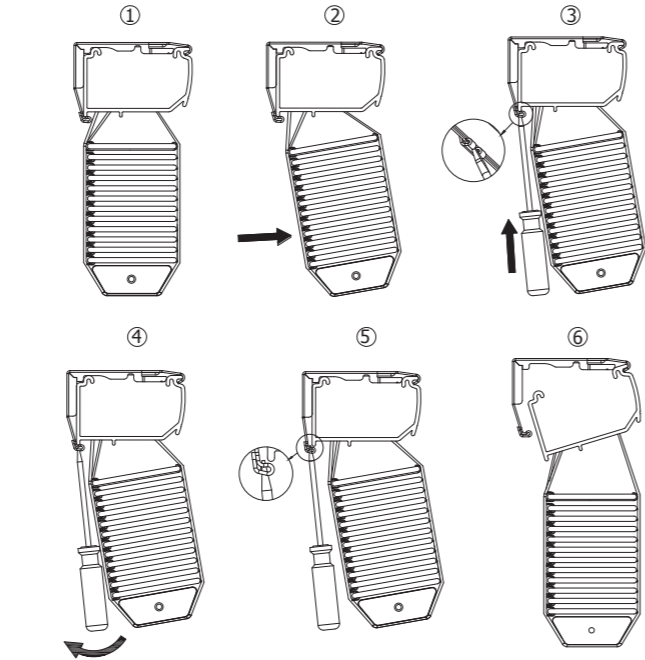
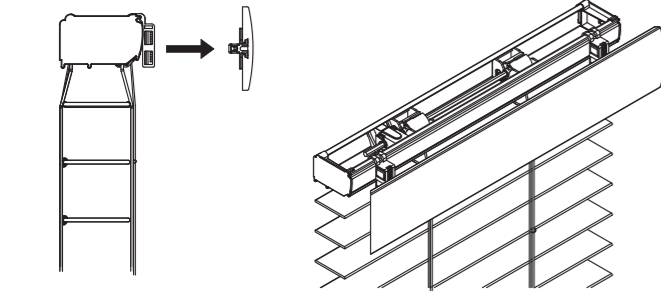
Our blind comes equipped with a cord release device that prevents child strangulation. Should the cord release device come apart, please refer to below steps:

- Open cord release device entirely.
- Align all operating cords and slide them into the slot of cord release device.
- Snap cord release device together to close.

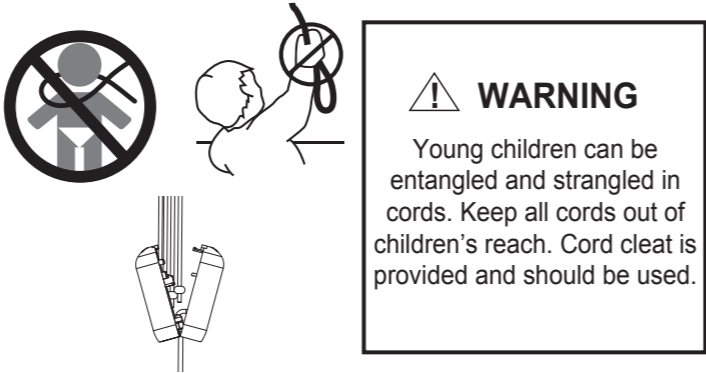


Remove the Blind

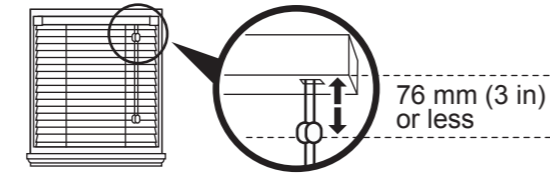
Before remove the blind, please remove the valance & valance clip plug away from the receptors first.



CHILD SAFETY



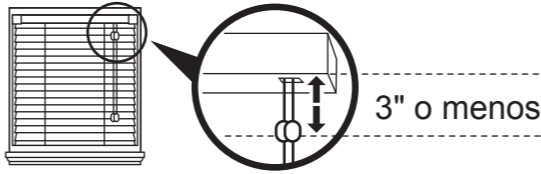
! WARNING



Inner cords can pull out to form a loop, which can STRANGLE a young child.

- Inner cord stop devices can reduce this risk if positioned correctly on the operating cords.
- If inner cord stop devices are more than 76 mm (3 in) below the headrail when the blind is fully lowered, move them closer by following the inner cord stop device adjustment instructions.

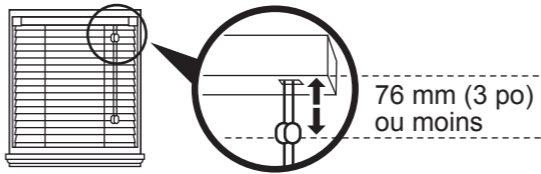
! ADVERTENCIA



Las cuerdas internas pueden sacarse para formar un lazo en que puede ESTRANGULARSE un niño pequeño.

- Los dispositivos de paro de la cuerda interna pueden disminuir este riesgo si están situados correctamente en el halado de las cuerdas.
- Si los dispositivos de paro de cuerda interna son más de 3 pulgadas (76 mm) por debajo del riel superior cuando está bajada opletamente la persiana, muévalos siguiendo las instrucciones del ajuste de paro de cuerda interna.

! MISE EN GARDE



Les cordons intérieurs peuvent sortir pour former une boucle et ÉTRANGLER un jeune enfant.

- Les dispositifs d’arrêt des cordons intérieurs peuvent diminuer ce risque s’ils sont placés correctement sur les cordons.
- Si les dispositifs d’arrêt des cordons sont situés à plus de 76 mm (3 po) en dessous du rail supérieur quand le store est complètement baissé, rapprochez-les en suivant les instructions de réglage du dispositif d’arrêt du cordon intérieur.

! WARNING



Y oung children can STRANGLE in cord and bead chain loops. T hey can also wrap cords around their necks and STRANGLE.

- A lways keep cords out of children's reach.
- M ove cribs, playpens, and other furniture away from cords and bead chains. C hildren can climb furniture to get to cords.
- A lways wrap the cords around the cleats in a figure eight, up high, out of reach of children.

! ADVERTENCIA



Los niños pequeños corren el riesgo de ESTRANGULARSE en los lazos de las cuerdas y cadenas. También se pueden envolver las cuerdas alrededor del cuello y ESTRANGULARSE.

- Mantenga siempre las cuerdas y cadenas fuera del alcance de los niños.
- Mueva las cunas, los corrales y otros muebles lejos de las cuerdas y cadenas. Los niños pueden subirse a los muebles para llegar a las cuerdas.
- No ate las cuerdas unas a otras. Asegúrese de que no se enrieden creando un lazo.

Cleaning Instructions

Perform periodic simple cleaning of your blind will keep your blind looking its best for the years to come. There are two ways to clean. You can dust it with a duster or dusting mitten, or simply use a soft cloth slightly moisten with lukewarm water to wipe down the slats. You can clean it with the blind hanging on the window, or you can take it down completely. By tilting the slats down but not fully closed, you will be able to clean most of the top surface of each slat. **Do not use detergent or abrasive cleaning solutions to clean the blind since it will likely cause damage to the blind.**