

HOME DECORATORS COLLECTION

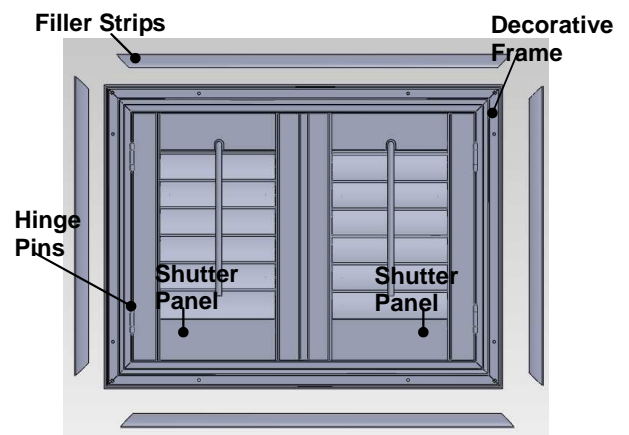
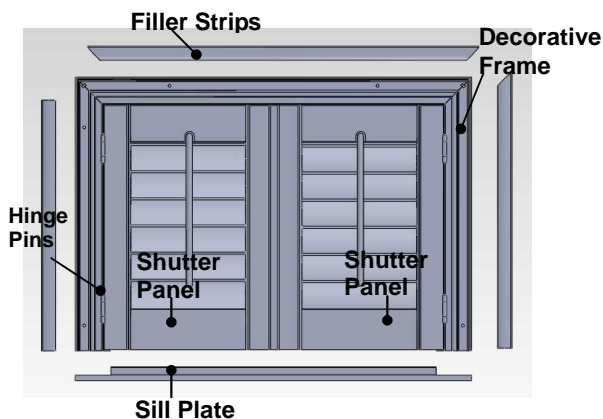
Custom Shutters

Shutters Installation Instructions For Window Sill Application or Full Decorative Frame

Congratulations on purchasing the finest shutters in the market. You can take pride that your purchase will enhance the function and beauty of your home.

Getting Started

Remove the shutter from the package. Do not discard any of the packaging material until the shutter operates to your satisfaction. Check the diagram below to make sure you have the necessary parts.



Driving Block
for butterfly clamps



Butterfly
Clamps



Hinge Pins



Frame Screws



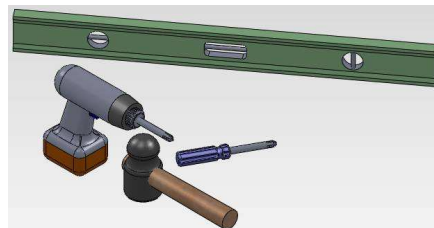
Miter Screws



Hinge Screws

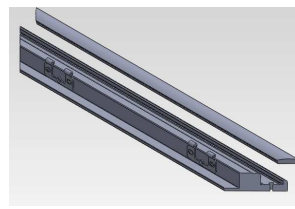
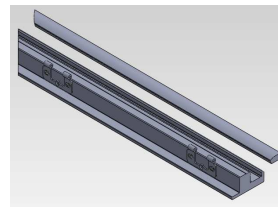
Tools needed for installing your shutter:

- Drill
- Pencil
- Level
- Tape Measure
- 6# Philips head driver
- Box Knife



Step 1 – Assemble Frame

1. Carefully remove panels and frames from the packaging.
Do not mix panels or frames from other windows.
All frame parts are labeled (top, bottom, left and right).

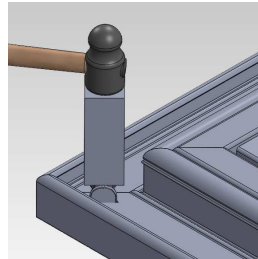


2. Remove filler strips. All frame parts are labeled (top, bottom, left and right).



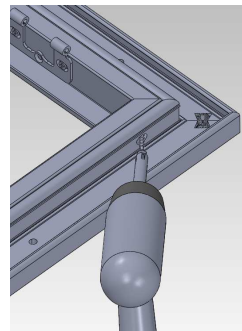
Tip: Remove filler strips and place them away from the installation area. Do not mix filler strips with other windows.

3. Position the left frame and the top frame onto a flat surface and line up the butterfly clamp slot. Insert the butterfly clamp into the hole (small wood block is recommended to prevent damage to floor and to ensure a flush fit by the butterfly clamp).



- a) Starting with the inner keyhole, insert and drive larger butterfly clamp with a rubber mallet.
- b) Repeat the same for the outer keyhole. The smaller butterfly clamp can be pushed down easily if the frame miter edges are flushed.

Tip: The butterfly clamp has a rounded and a flat side to it. The rounded side should be inserted in slot first. Repeat this step for remaining corners to complete all the frame assembly.

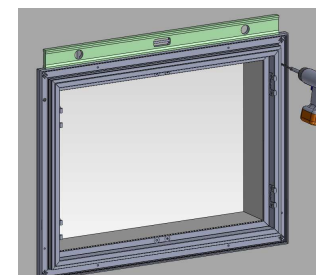
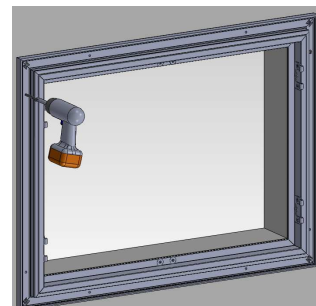
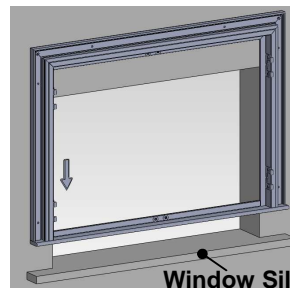


4. For 3 sides frame with sill-plate, connect the side frames and the sill plate using 38mm screws.



Step 2 – Attaching Frame

Position the assembled frame evenly around the window opening and secure with a screw into the upper left frame ONLY. Shutter will be fully secured in later steps. Once the left side is secured, level the frame on the window and secure with a screw into the upper right frame. Shutter will be fully secured in later steps.



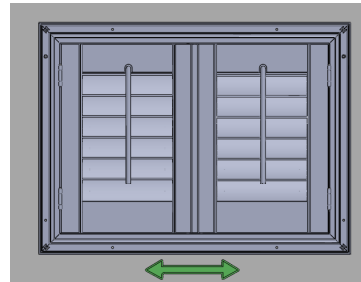
Step 3 – Panel Assembly

1. Place the left shutter panel(s) in the frame, align hinges and insert hinge pins into hinges.
2. Place the right shutter panel(s) in the frame, and insert hinge pins into hinges.

Tip: If panel hinges are not aligned with frame hinges properly then frame hinges can be adjusted to align with panel hinges.



3. Please check gap between panel and frame at top and bottom, gap should be even if gap is not even then shift (rack) frame left to right until gap is even.



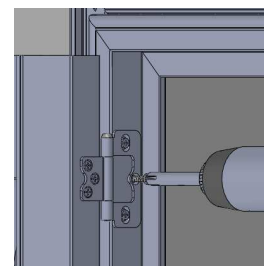
4. Once the gap is even, secure a screw at the bottom of the left frame and right frame.



5. Open and close panels to make sure panels operate properly. Secure the frame with screws through the rest of holes.



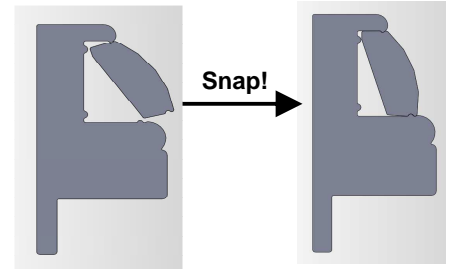
6. Fasten the deadlock screw for every hinge.
7. Open shutter panels and position the light block evenly on the window sill. Make sure magnets on both panels will catch onto the pre-assembled magnet catches on the light block.
Tip: the side with magnet catch must facing room side.



Step 4 – Finishing Touch

IMPORTANT: Check shutter operation and alignment before installing filler strips, filler strips can NOT be removed once they are snapped into place. Match filler strips with the Decorative Shutter Frame, Left to Left, Top to Top, Right to Right (Bottom to Bottom) and snap into place. This will provide a covering for the screws and give your shutters a finished look.

Tip: A white rubber hammer can be used to help install filler strips.

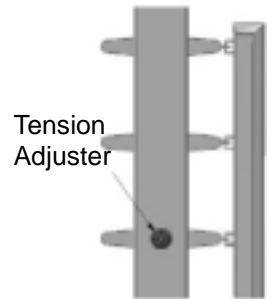


Maintaining Your Shutter

These shutters are made to resist most staining substances and may be easily cleaned by simply wiping down or dusting. For any stains or marks, a soapy water solution may be used along with a damp cloth. To clean, open the louvers and panels and wipe down the front and back of the shutters. You may also remove the panels from the frame and take down to clean.

Adjusting Tension System

If over a period of time the louvers on your shutters should loosen or are not functioning to your standard, we have included a built-in tension system to allow for adjustments. Simply open the panels fully. On each side of the panel you will find a tension adjuster screw hole. With a proper screwdriver, gently turn the screw to your desired resistance level on each side of the panel. Repeat process for other panel(s) if necessary.



Lifetime Limited Warranty

We warrant that our shutters will be free from defects in materials or workmanship for as long as the original retail purchaser owns the shutters, provided that such products were properly installed in residential dwellings; and such products were made or assembled exclusively from original materials and components. Any resale or other transfer of the product and/or materials voids this warranty.

This is a limited warranty, and the obligation of the manufacturer is solely limited to repair or replacement of the shutters or shutter components found to be defective. Repairs will be made only with like or similar parts. This warranty does not include shipping charges, and costs of labor for measuring and installation.

This warranty does not cover any condition of damage to the shutter or window, from unauthorized repairs, accidents, alterations, misuse, abuse, act of God, motorized devices, loss of color intensity, or failure to follow our instructions with respect to measurement, installations, cleaning or maintenance. Improper, inappropriate, or unauthorized replacement parts, repairs or maintenance voids this warranty. This warranty excludes all liability for removal of the shutter and reinstallation in the same or another window, or damage to the window frame, glass or any other portion of the window.

All other warranties, both express and implied, are expressly disclaimed. This warranty excludes all liability for consequential or incidental damages for any cause whatsoever.

All other rights are governed by the state law in which the shutters were purchased, and may vary from state to state. Some states do not allow the exclusion or limitation of implied warranties, or incidental or consequential damages, so the above limitation may not apply to you.

HOME DECORATORS COLLECTION

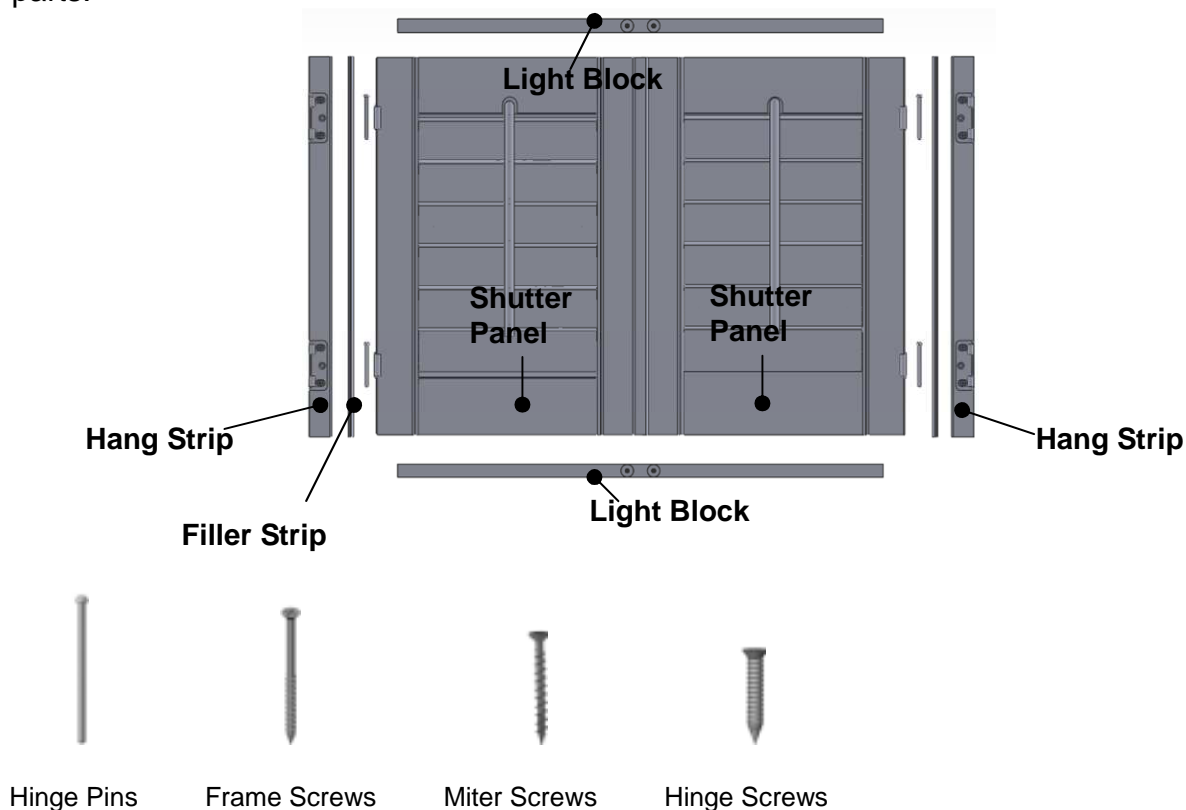
Custom Shutters

Shutters-Hang Strip Flush Mount Installation Instructions

Congratulations on purchasing the finest shutters in the market. You can take pride that your purchase will enhance the function and beauty of your home.

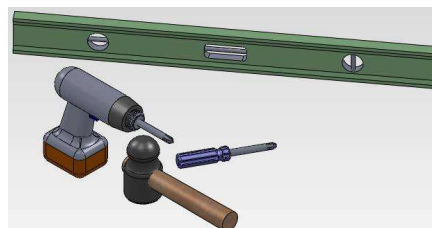
Getting Started

Remove the shutter from the package. Do not discard any of the packaging material until the shutter operates to your satisfaction. Check the diagram below to make sure you have the necessary parts.



Tools needed for installing your shutter:

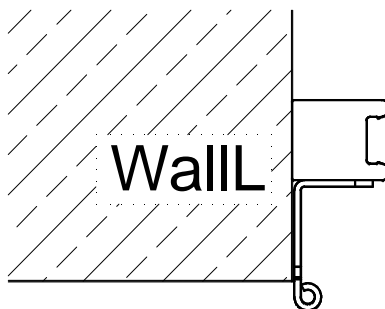
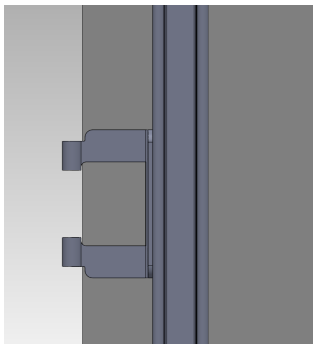
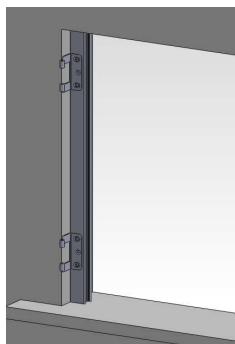
- Drill
- Tape Measure
- Pencil
- 6# Philips head driver
- Level
- Box Knife



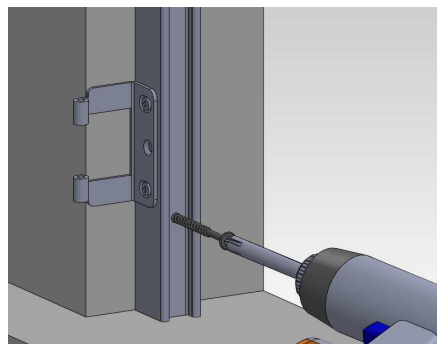
Step 1 – Attaching Hang Strip

1. Place left hanging strip along the inside left window jam of the window.

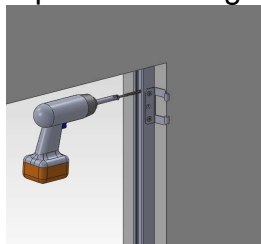
Tip: For flush panel installation, line the backside of hinge barrel with the wall surface.



2. With hang strip properly positioned in the opening, insert screw in top pre-drilled holes and secure left frame to the jam. Make sure the hinge barrel is positioned correctly before securing screw. REPEAT for bottom pre-drilled hole (refer to tip above for flush panel installation). Complete frame installation by securing the frame with screws into the remaining pre-drilled holes.



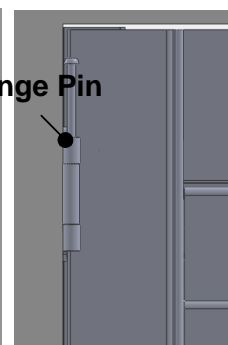
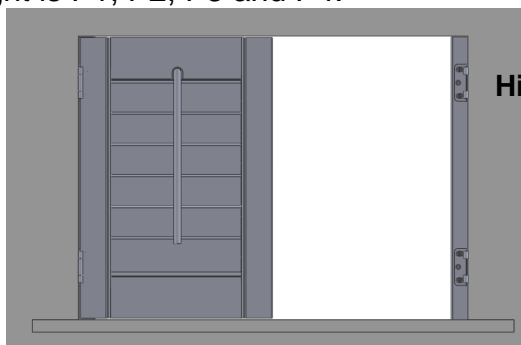
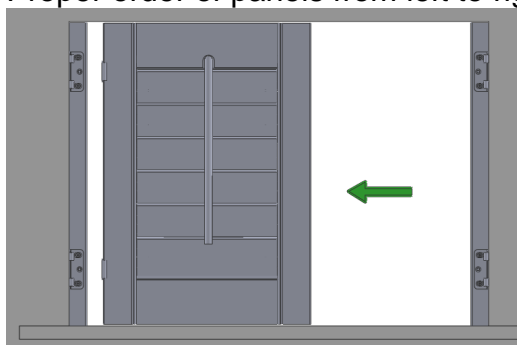
3. Repeat for the right side.

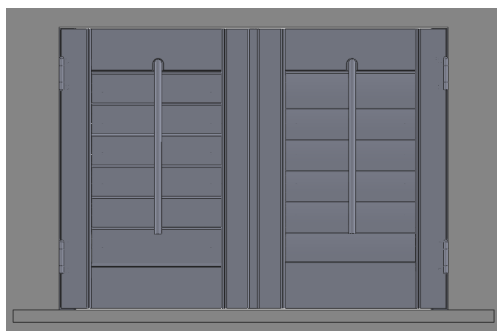


Step 2 – Mount Shutter Panels

Make sure tilt bar notch is at the top of the window; assemble shutter panels to hang strip by joining the hinges of the shutter panel to the hinges on the hang strip and inserting hinge pins.

- a. With both hang strips installed, place the left shutter panel into the window opening and slide into position. Once the panel is aligned with frame hinge, insert hinge pins into all hinges to secure the panel.
- b. With all hinge pins installed, open the left panel and place the right shutter panel into the window opening and slide into position. Once the panel is aligned with frame hinge, insert hinge pins into all hinges to secure the panel.
- c. If you have bi-fold panels, after attaching far left and far right panels in previous step, you will need to join the hinges of panels P1 and P2 and insert hinge pins. Repeat for panels P3 and P4. Proper order of panels from left to right is P1, P2, P3 and P4.



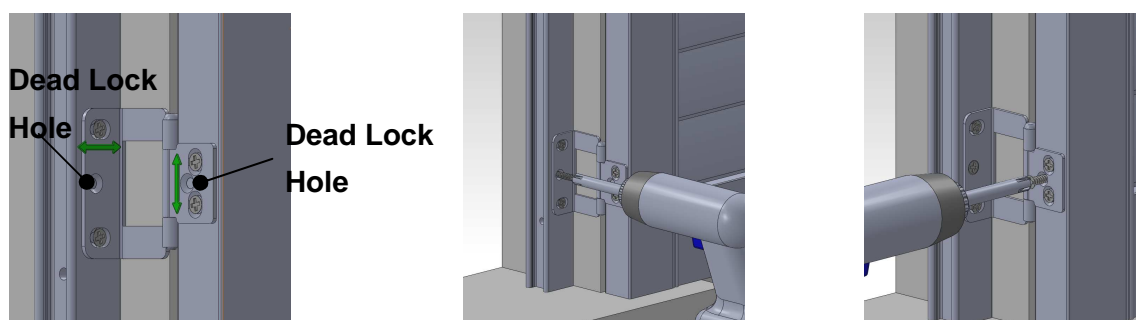


Tip: if you should have any difficulty inserting the pin into the hinges, slightly loosen the hinge screws on the hang strip and move back or forth until the hinge pin slides into position. Then re-tighten the hinge screws on the hang strip.

Step 3 –Making Adjustments

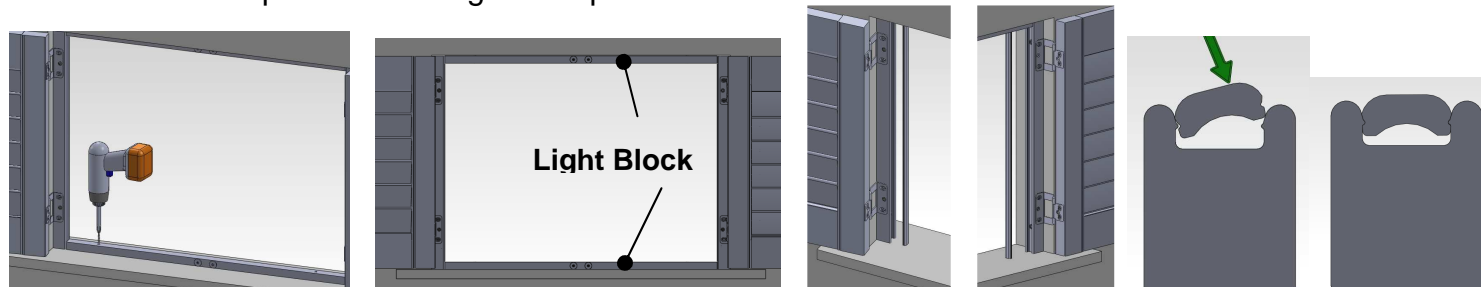
Check gaps between panels and around the window opening; move the hinges left or right to adjust gap between panel/panel & panel/window opening in left and right. Slightly loosen the hinge screws on the panel and move panel up or down to adjust gap at top and bottom.

Note: Re-tighten the screws after finish the adjustment. Secure the dead lock screws (3/4") through the dead lock holes on hinges.



Step 4–Finishing Touch

Open shutter panels and position the light block evenly on the window sill, positioning it flush with the front of the left and right hang strips. Make sure magnets on panels will catch onto the pre-assembled magnet catches on the light block. When proper alignment is achieved, secure the top and bottom light block with the 1 1/2" screws provided through each pre-drilled hole.



IMPORTANT: Check shutter operation and alignment before installing filler strips, filler strips can NOT be removed once they are snapped into place. Match filler strips with the Decorative Shutter Frame, Left to Left, Right to Right and snap into place. This will provide a covering for the screws and give your shutters a finished look.

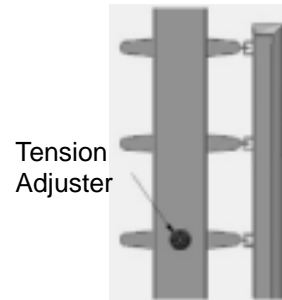
Tip: A white rubber hammer can be used to help install filler strips.

Maintaining Your Shutter

These shutters are made to resist most staining substances and may be easily cleaned by simply wiping down or dusting. For any stains or marks, a soapy water solution may be used along with a damp cloth. To clean, open the louvers and panels and wipe down the front and back of the shutters. You may also remove the panels from the frame and take down to clean.

Adjusting Tension System

If over a period of time the louvers on your shutters should loosen or are not functioning to your standard, we have included a built-in tension system to allow for adjustments. Simply open the panels fully. On each side of the panel you will find a tension adjuster screw hole. With a proper screwdriver, gently turn the screw to your desired resistance level on each side of the panel. Repeat process for other panel(s) if necessary.



Lifetime Limited Warranty

We warrant that our shutters will be free from defects in materials or workmanship for as long as the original retail purchaser owns the shutters, provided that such products were properly installed in residential dwelling; and such products were made or assembled exclusively from original materials and components. Any resale or other transfer of the product and/or materials voids this warranty.

This is a limited warranty, and the obligation of the manufacturer is solely limited to repair or replacement of the shutters or shutter components found to be defective. Repairs will be made only with like or similar parts. This warranty does not include shipping charges, and costs of labor for measuring and installation.

This warranty does not cover any condition of damage to the shutter or window, from unauthorized repairs, accidents, alterations, misuse, abuse, act or God, motorized devices, loss of color intensity, or failure to follow our instructions with respect to measurement, installations, cleaning or maintenance. Improper, inappropriate, or unauthorized replacement parts, repairs or maintenance voids this warranty. This warranty excludes all liability of removal of the shutter and reinstallation in the same or another window, or damage to the window frame, glass or any other portion of the window.

All other warranties, both express and implied, are expressly disclaimed. This warranty excludes all liability for consequential or incidental damages for any cause whatsoever.

All other rights are governed by the state law in which the shutters were purchased, and may vary from state to state. Some states do not allow the exclusion or limitation of implied warranties, or incidental or consequential damages, so the above limitation may not apply to you.

U.S. patent No.:6,660,086