



# Artisan Cellular Shades with Simple Fit® Installation

includes Command® Strips from 3M  
**Instructions for Inside Mount Installation**

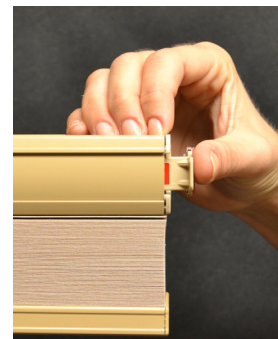
## What's Included with your shade:



- Bottom rail handle
- Simple Fit® spacer
- Alcohol prep pad
- Two additional Command® Strips from 3M

## Before Installation:

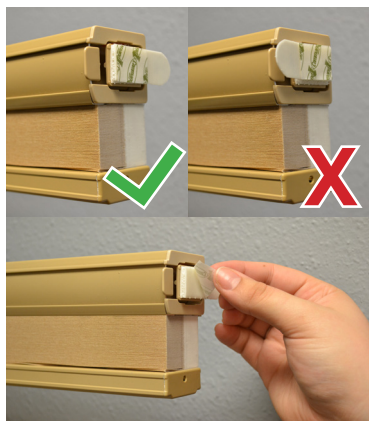
- a)** If you ordered several shades, ensure you have the correct shade for each window. Check proper fit by holding shade in the intended window.
- b)** Clean mounting surface with included alcohol pad and allow to dry. Fresh paint should be fully cured (check paint manufacturer's cure time). For further information, visit [redishade.com/faq](http://redishade.com/faq)
- c)** Check that the adjustable Trigger End mount (right side) is fully depressed inside the Simple Fit® mounting system. This should already be done when your shade arrives; if not, press firmly on the mounting plate. The Trigger End is fully in place when you hear a 'click' sound. See visual example to the right.



## Installation:

For how-to video, head to this link: <http://bit.ly/InstallArtisanCustom-Select>

1.



2.



3.



1. Ensure the tab side of the Pair Strip is facing the window side of the shade and peel the adhesive liner from each adhesive strip.
2. Place Fixed End (left side) of shade into desired position in window frame. Next, raise and position Trigger End (right side) into position.
3. Press the Trigger End inward (toward the window glass) to engage the Simple Fit system, locking the shade into place.

## Visual Check:



Check to ensure a red warning line is not visible on Trigger End side of shade. If warning line is visible, remove and reinstall with Spacer (see *Removal and Troubleshooting* for help with this step). After reinstallation, if the warning line continues to be visible, please call us at 1-888-608-6611.

## Removal and Troubleshooting

### Removal:

1a.



1b.

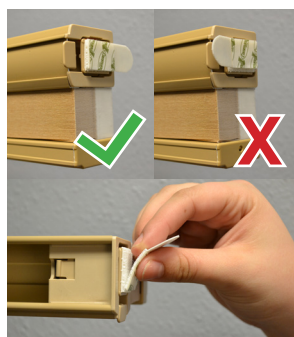


**1a)** Grasp shade with both hands and push firmly toward Trigger End (right side) until Fixed End (left side) disengages. Swing Fixed End clear of window frame, then disengage and swing Trigger End from the window frame.

**1b)** Using the Command® Tab, stretch the strip slowly until it releases from the surface.

### Reinstallation:

2a.



2b.



Locate the two additional Command® Strips provided in the Parts Bag (see *What's Included*).

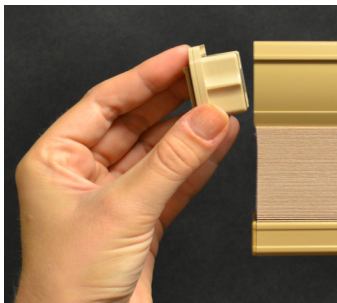
**2a)** Apply the tab side of the Command® strips to the non-tab side of the strips with the tab facing the window side.

**2b)** Repeat installation.

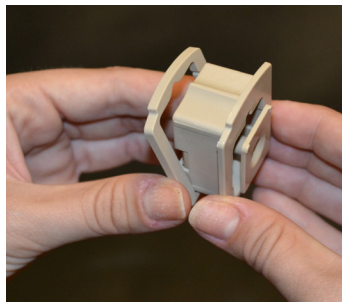
### Simple Fit® Spacer (if applicable):

If the red warning line is visible after installation, use the included Spacer to ensure shade is properly installed.

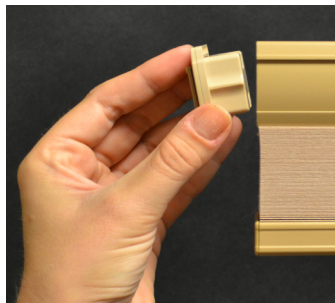
a.



b.



c.



#### Before installing Simple Fit® Spacer, please check:

- Shade is being installed in the correct window
- Shade width matches size ordered
- Window measurement is correct

**a)** Remove Fixed End mount from left side of head rail.

**b)** Place Spacer over Fixed End mount.

**c)** Reattach Fixed End mount with Spacer by inserting into head rail. Press firmly to secure.

**d)** Repeat Installation steps.

Visit [redishade.com](http://redishade.com)  
for questions or troubleshooting head to  
[redishade.com](http://redishade.com) or call 1-888-608-6611  
We're HAPPY to help!

# Outside Mount Installation Instructions

## What's Included with Your Shade:

- Bottom rail handle to assist with shade operation
- Outside mount brackets
- Screws

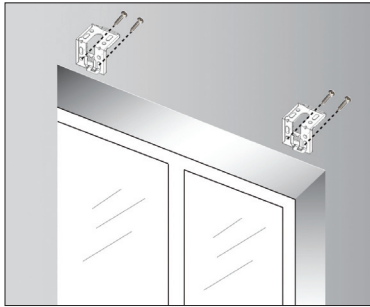
## Parts Table:

| Shade Width | Brackets | Screws | Handle | Handle for TDBU |
|-------------|----------|--------|--------|-----------------|
| 19" - 47.9" | 2        | 4      | 1      | 2               |
| 48" - 72"   | 3        | 6      | 2      | 4               |

## Tools Required (not provided):

- Pencil
- Drill with 3/32" drill bit
- Tape Measure
- #2 Phillips Screwdriver
- Level
- Wall Anchors (may be needed depending on your wall structure)

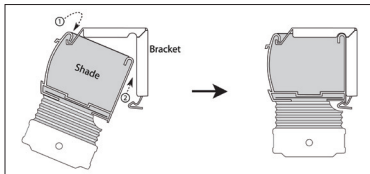
## Before Installation:



- If you ordered several shades, ensure you have the correct shade for each window. Center shade with window and mark wall or wood trim on both sides of the shade.
- See Parts Table for bracket quantity needed for installation.
- Position shade on mounting surface and mark hole locations on the surface.
- Use a level to ensure marks are aligned in order for shade to properly snap into brackets.
- For wall mount, affix brackets into wood studs using provided screws. If not possible, use appropriate wall anchors (not provided).

## Installation:

For how-to video, head to this link: <http://bit.ly/shadeinstall>



- Using both hands, tilt top of shade slightly toward window and hook front edge into brackets.
- Rotate back of head rail up and press bottom of head rail until it clicks into place.
- Check to ensure there are no fabric cells caught in the brackets.

## Shade Removal:

- Each bracket has a release tab located at bottom center. With shade fully raised, push inward to release back of shade from bracket. Do the same for each bracket, releasing them.
- Once shade is released from all brackets, lift shade off.



Visit [artisancellular.com](http://artisancellular.com)  
for extra installation, troubleshooting tips and videos.  
Or give us a call at 855-529-7107.  
We're HAPPY to help! ;)