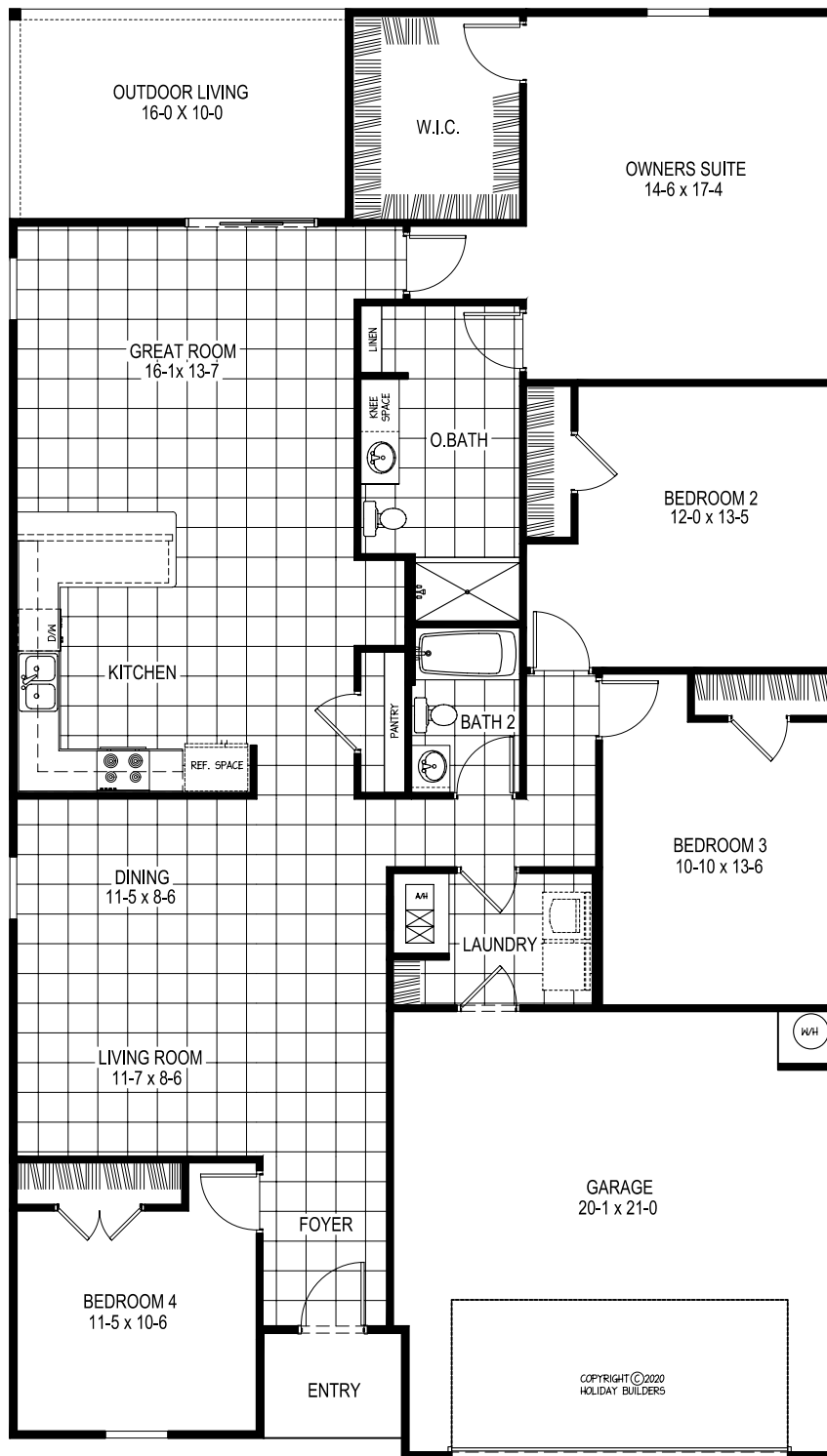




THE PALMER

First Floor Living	2,062 Sq. Ft.
Garage	449 Sq. Ft.
Outdoor Living	160 Sq. Ft.
Covered Entry	33 Sq. Ft.
Total	2,704 Sq. Ft.



Prices, terms, availability, features, amenities, specifications, plans, dimensions and designs vary per plan and are subject to change or substitution without notice by seller. Renderings are Artist's concept and do not represent actual landscaping. All measurements are approximate. Square footage is measured from the outside of exterior walls. These floor plans may not be to scale and may be the reverse of shown in actual production homes. In production homes, these floor plans and elevations may vary in exact dimensions and details. This does not constitute an offer in states requiring prior registration. Void where prohibited by law. Copyright ©2008 Holiday Builders. 11/25.



Architectural Style A



Architectural Style B