

Creative skulls

Handout by **Ulianka**

Asymmetrical Sugar Skull

Paints: Superstar - white, black, soft yellow, fuchsia, berry wine

Brushes: Global – flat $\frac{3}{4}$ inch, Nat's Gold Edition round #3

Glitter: Superstar biodegradable magenta & gold

Other: Global liquid glitter ultra

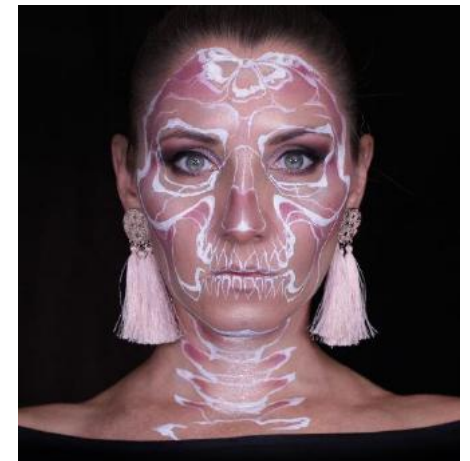


Line Skull

Paints: Global - white

Brushes: Global – long liner, round #2

Other: blending brush, light and dark eyeshadow of your favourite colour



Mask Skull

Paints: Global - white, candy pink, purple, fresh blue

Brushes: Global – flat $\frac{3}{4}$ inch, long liner; American Painter – $\frac{1}{2}$ inch

Other: blending brush, dark brown and black eyeshadow



Zombie Skull

Paints: Superstar - white, black, soft yellow, poison green, green

Brushes: Global – flat $\frac{3}{4}$ inch, round #3; Superstar – Matteo Arfanotti round #2

Other: blending brush, dark brown and black eyeshadow



The outer side of the eye cavity is aligned to the lower part of the cheek bone

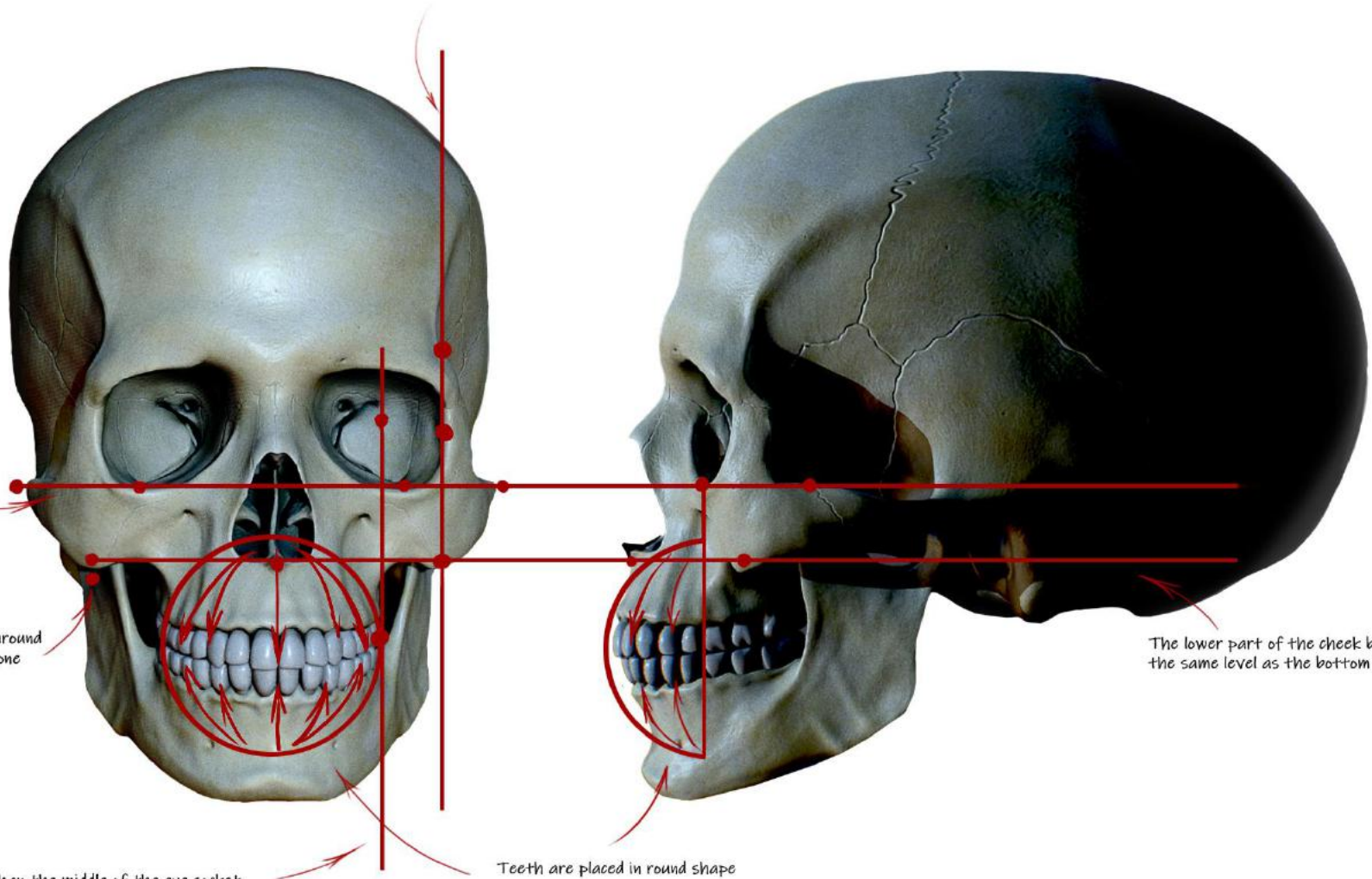
The top of the skull is levelled at the same level as bottom of the eye socket

The upper side of the lower jaw is hinged around the area of the lower part of the cheek bone

The lower part of the cheek bone is levelled at the same level as the bottom of the nose cavity

The teeth are not wider than the middle of the eye socket

Teeth are placed in round shape



Features of Sugar Skulls

Same features as above, plus:

Black/ coloured/ decorated eyes

Black/ coloured/ decorated nose

Flowery elements around the forehead/check bones/chin/eyes

Lined/decorated teeth

