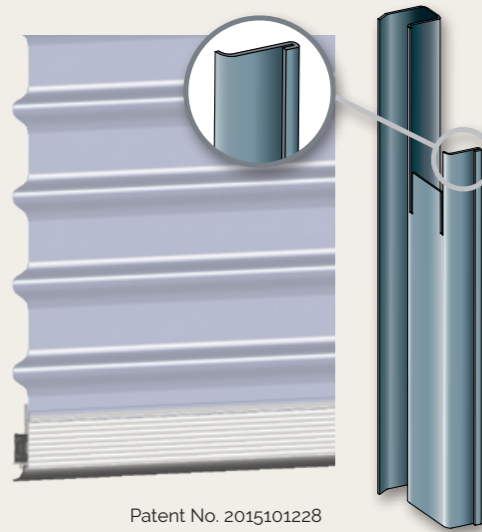




Commando Collection features & benefits

- **Rounded formed panel** - Stylish appeal
- **Colours** - COLORBOND® steel and ZINCALUME® steel
- **Glass-filled nylon drum wheels** - Quiet operation
- **Nylon braid edging** - Smooth operation of door in tracks
- **Nylon bottom rail plug** - Smooth operation of door in tracks
- **Flexible sealing strip** - helps prevent dust and leaves entering the garage
- **Galvanised tracks** - Galvanising ensures long life by minimising corrosion
- **Galvanised brackets** - Galvanising helps minimise corrosion ensuring long life
- **Track stops** - Assists in keeping the door in the tracks
- **Reverse roll** - External installation when no inside headroom available
- **Spring system** - 25,000+ cycles
- **Sizes** - Up to 5100mm high and 5100mm wide
- **12 month warranty**

COMMANDO COLLECTION COMMERCIAL ROLLER DOOR



Patent No. 2015101228

THE SAFEST OPERATING GUIDES. EXCLUSIVE TO TAUREAN® DOOR SYSTEMS.

TaureaEdge® safety guides are designed with a rolled edge that runs the length of the track. This makes it so safe it's almost impossible to cut yourself on it.

Warranty

A 12 month warranty on steel cracking, lock seam failure of the door curtain and all other items of the door. Excluded from the warranty is salt corrosion or any damage to the door curtain because of any environmental conditions or issues. For more details please refer to the Taurean® Door Systems website taureands.com.au.



Taurean® Door Systems Unit 3/1464 Ferntree Gully Road, Knoxfield, Victoria 3180
P: 1800 778 658 • E: customerservice@taureands.com.au • W: taureands.com.au



*Safeguard
and enhance
your business*



Scan code for
more information



taureands.com.au

THE COMMANDO COLLECTION

With a roller door from the Taurean® Commando Collection you're getting a door that has been designed and developed through decades of industry knowledge and which will operate smoothly with ideal balance.



STYLE

Every Commando door is made from quality steel and comes in a wide range of contemporary COLORBOND® steel colours. Doors are available in a full range of sizes up to 5100mm high and 5100mm wide which suits small commercial factories, sheds or other buildings.



STRENGTH

Panels are 0.42mm thick steel to ensure strength and uniformity. Steel hinges add strength too.



SAFETY

Multiple safety features include track stops which ensure the door remains in the tracks even with rough treatment, an easy to use hand operated chain winder on manual doors and no sharp edges thanks to patented TauraEdge® safety guides.



BALANCE

Beautifully balanced springing ensures the door runs smoothly every time, maximising its performance for more than 25,000 cycles.



At Taurean® Door Systems we've designed and manufactured an exceptional range of strong and stylish doors and shutters and have the track record to prove it.

As a wholly owned subsidiary of Stramit, we draw on more than 30 years of industry experience to create high quality, Australian made doors for domestic and commercial garages, sheds and storage facilities.

Operation

Nylon braided edging, together with the moulded nylon drum wheels and the nylon bottom rail plug provide a beautifully smooth and quiet door during operation.

Automation

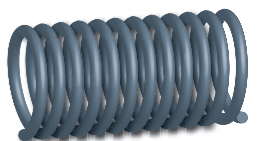
Taurean® supplies and recommends the Grifco and Merlin ranges of door openers. These door opener products offer security and peace of mind, and paired with their myQ smart home technology deliver powerful automation options.



Long life

Of course the life of your door is all important so galvanised brackets, tracks and other components protect against corrosion. The springing system too is designed for more than 25,000 cycles which maximises the performance of the door over its lifetime.

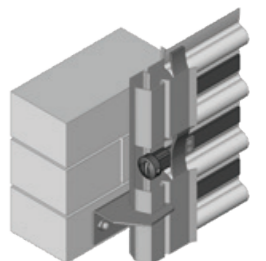
Taurean® Commando No.1 for springing means optimum life



Weather protection

Flexible sealing strip along the bottom rail prevents entry of dust and leaves.

In windy regions the doors can be manufactured with an extra protection, windlock system that gives the door even more security.



Windlock System