

Fleet Web Release Notes,

August 19, 2022

Improvements

Following improvements have been made on Fleet 2.0:

- Adding a Service Entry now allows multi-line comments.
- Whitelabeling capability for resellers is now available on Fleet 2.0.
- Live Map's events filter was renamed to 'Events' from 'Events by' in Fleet 2.0.
- Removed 'View Dashboard' button from ticker of Live Map on Fleet 2.0.
- Enhancements are made to the '+Add Service Entries' feature to improve usability.
- 'Group/Vehicle' filter design improvements are made in a similar manner to 'Events' filter.
- Improved flexibility in editing and deleting comments on SafetyCam videos.
- The Username Email Split message is no longer displayed on the login page for a cleaner look.
- A search parameter has been added to the 'Drivers' page to improve the search functionality.

Fixes

- Minor bug fixes and performance enhancements.

Improvements

Service Entries can now have multi-line comments

We have now enhanced the ability to add multi-line comments when adding a Service Entry. Special characters are not allowed except for alphanumeric, hyphen, hash, underscore, and single quotes characters.

Add Service Entry

After service entries are created, you will be able to edit each one individually. Service Entries will auto reset the Service reminder on corresponding vehicles and assets. Service Entries help in book keeping of vehicles and assets service history

Select Vehicle/Asset *
1001244904

Odometer
13420

Category *
Fuel Transaction

Service Center

Service Date *
08/03/2022

Service Center Duration * ⓘ
1 0 0

Engine Hours
1700

Service Cost * Total By Parts
\$ 45

Invoice Number
382/K8/219

Service Performed *
Select Service Type

Air Filter Replacement ✕
Brake Inspection ✕

Comments
Test 1
Test 2

Attachments
Upload Attachment
☐ Reset Last Service Date ⓘ

Cancel Save

Note: Both Classic Fleet and Fleet 2.0 now support this feature.

Whitelabeling capability for resellers now available on Fleet 2.0

Our Fleet product now has a domain URL which redirects users to our Fleet 2.0 version of white-labeled reseller login page.

Note: This feature has now been implemented on Fleet 2.0. It was already available on Classic Fleet.

Live Map's events filter renamed to 'Events' from 'Events by' in Fleet 2.0

The events filter on the Live Map has been renamed to 'Events' from 'Events by'.

LIVE DASHBOARD SAFETYCAM REWARDS COACH REPORTS MAINTENANCE ELOGS ADMIN

Search Filter By: Events Group/Vehicle Geofences Tags Export Live Update Settings

Sort by: Newest to Oldest

9292929999
0852408620 | Default Group
Paired Via Web at Aug-04-2022, 14:17 IST
15 Dupont Cir NW, Washington, DC 20036, USA
Last updated on Apr-29-2020, 15:20 IST

7686567890
1000433133 | Default Group
Paired Via Web at Aug-04-2022, 13:59 IST
18183 Winton Rd, Leavenworth, WA 98826, USA
Last updated on Apr-13-2022, 18:19 IST

1001244904
1000655168 | DDT SUB
Paired Via Web at Aug-04-2022, 13:59 IST
Last updated on Aug-03-2022, 16:29 IST

1003306323
Default Group
Mobile Call Ended at Jul-25-2022, 12:21 IST
2999 S Golden State Blvd, Turlock, CA 95380,

Map Options Legend

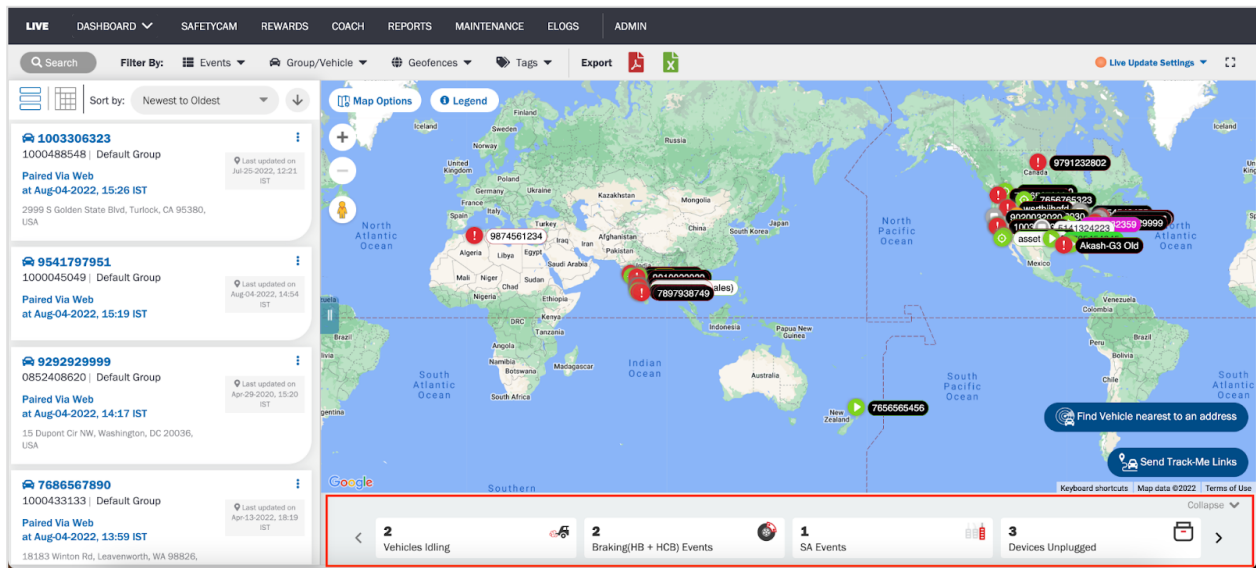
World map showing vehicle locations with labels like 9791232802, 7686565193, 9874561234, 7897938749, 7686565456, and Akash-G3 Old.

Find Vehicle nearest to an address Send Track-Me Links

Keyboard shortcuts Map data ©2022 Terms of Use Expand

Removed 'View Dashboard' button from ticker of Live Map on Fleet 2.0

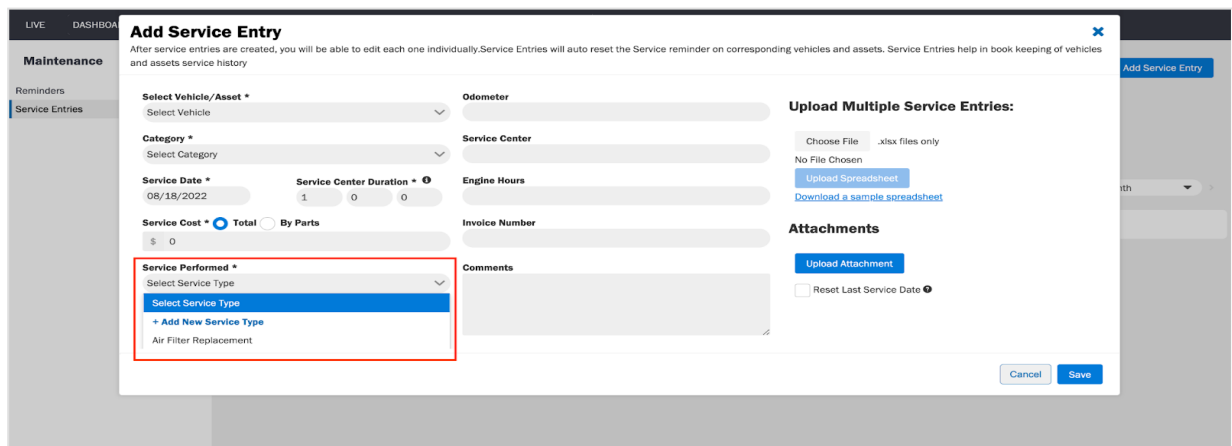
The 'View Dashboard' button is removed from the ticker board of Live Map.



Enhancements are made to the '+Add Service Entries' feature to improve usability

In order to improve the usability of the +Add Service Entries, new enhancements have been added. These enhancements include:

- Reduced the size of the pop-up window by eliminating white space at the bottom.
- Service Types can now be scrolled down.
- A newly added field '+Add New Service Type' allows users to add new service types when they cannot find the desired one from the drop-down list.

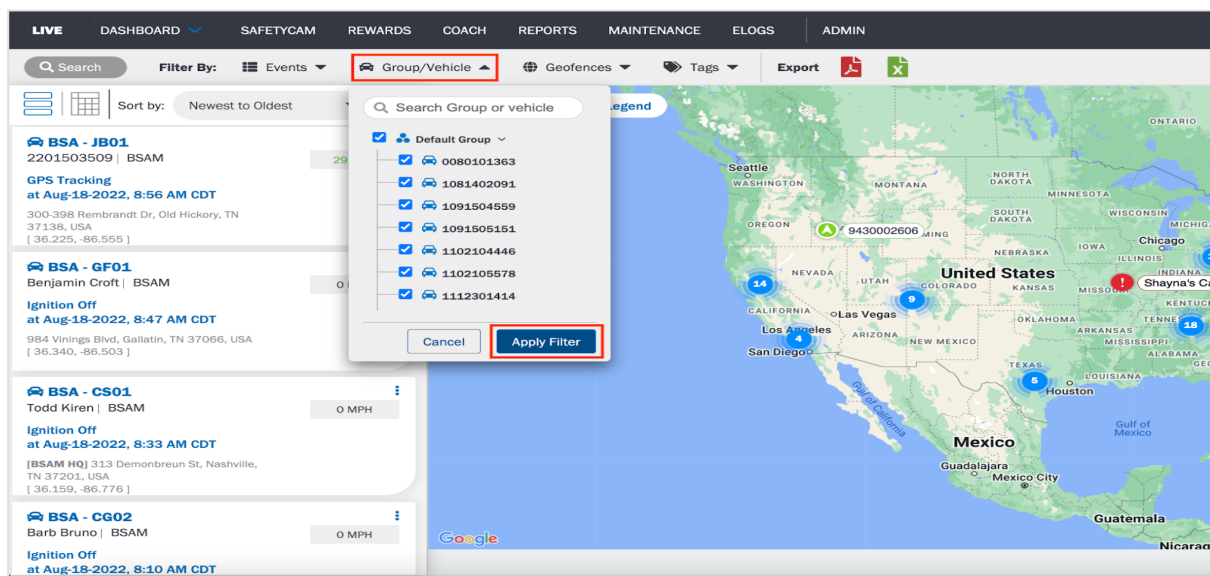


Note: These enhancements have been made to both Classic Fleet and Fleet 2.0.

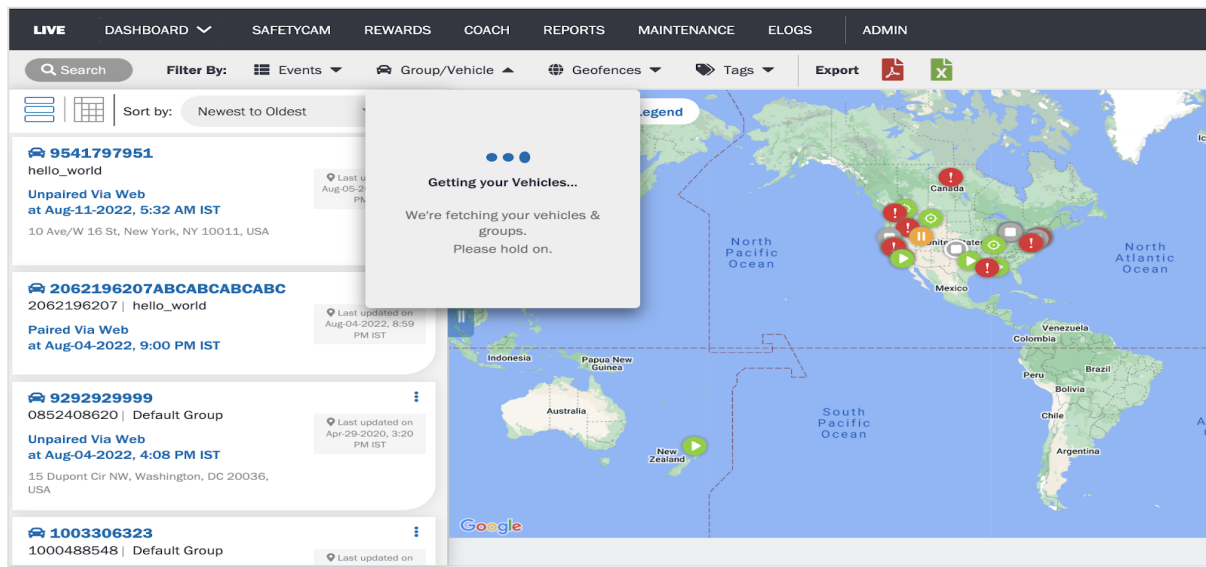
'Group/Vehicle' filter design improvements are made in a similar manner to 'Events' filter

We have improved the design of the 'Group/Vehicle' filter to be similar to the 'Events' filter. These improvements include:

- The search bar is designed to look like the one on the 'Events' filter.
- 'Apply Filter' should be visible regardless of group/vehicle selection.

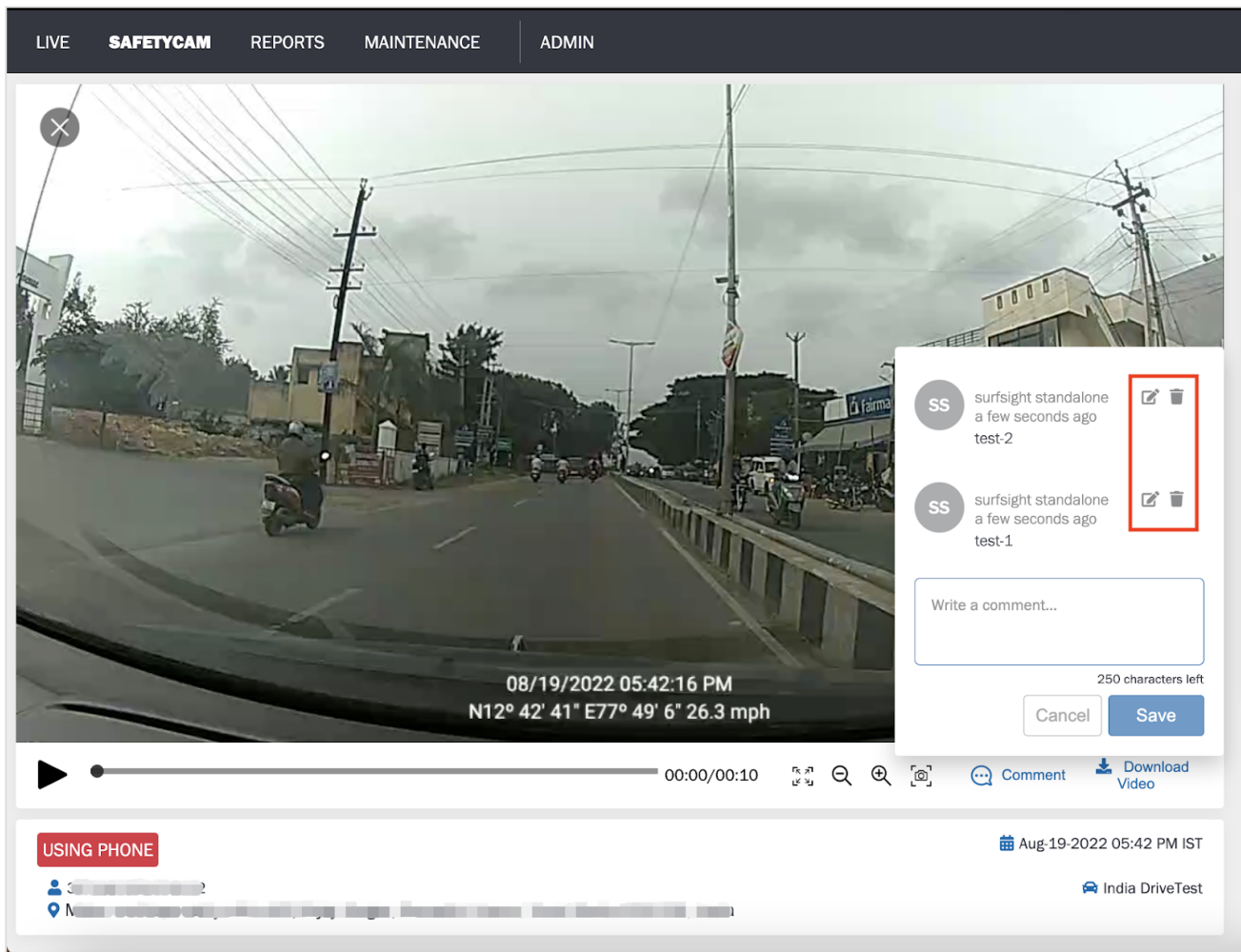


- When the list of 'Group/Vehicle' loads, the following message will appear: 'Getting your Vehicles...We're fetching your vehicles & groups. Please hold on.'



Improved flexibility in editing and deleting comments on SafetyCam videos

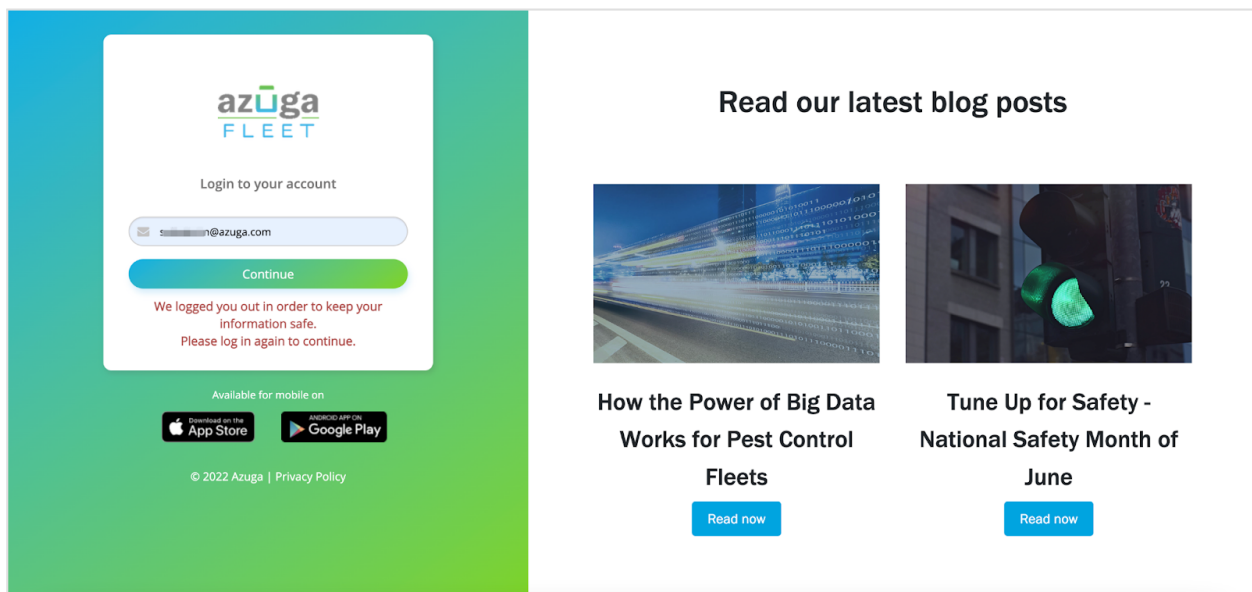
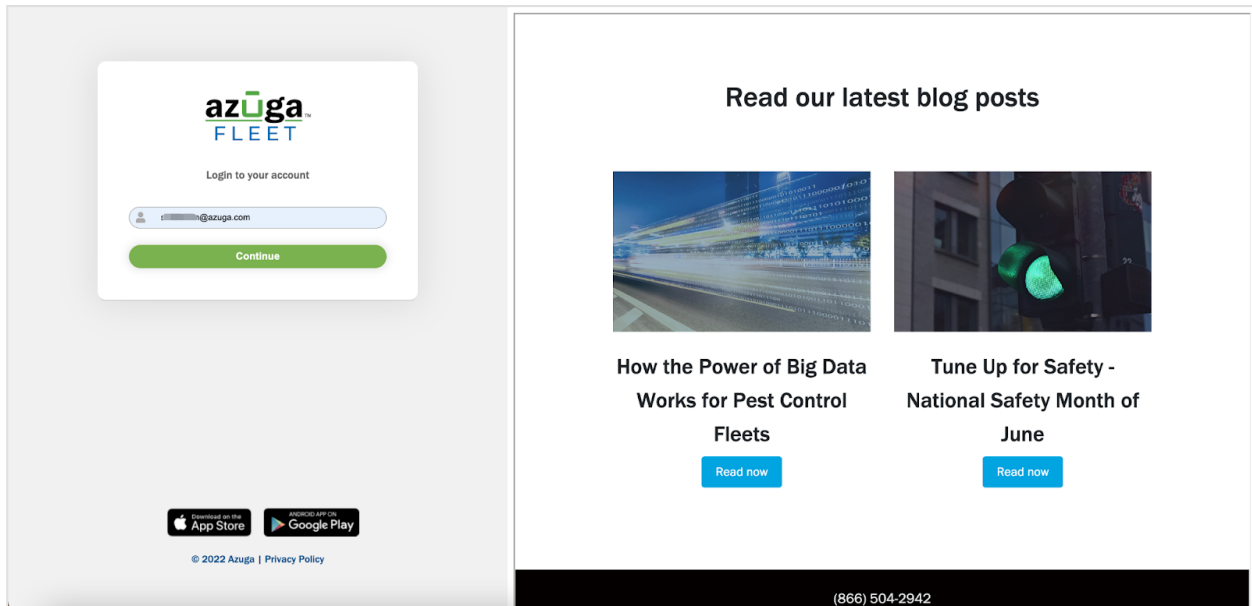
We have made improvements to the Safetycan video comments. Users can view, edit, and delete their comments by clicking the edit and delete icons placed alongside each comment.



Note: This improvement to the SafetyCam video comments has only been implemented on Fleet 2.0.

The Username Email Split message is no longer displayed on the login page for a cleaner look

We have removed the Username Email Split message from the Login page to make it look cleaner and more visually appealing.



Note: This change has been implemented both on Classic Fleet and Fleet 2.0.

A search parameter has been added to the 'Drivers' page to improve the search functionality

We have added a new search parameter to the 'Drivers' page to enhance the search functionality.

