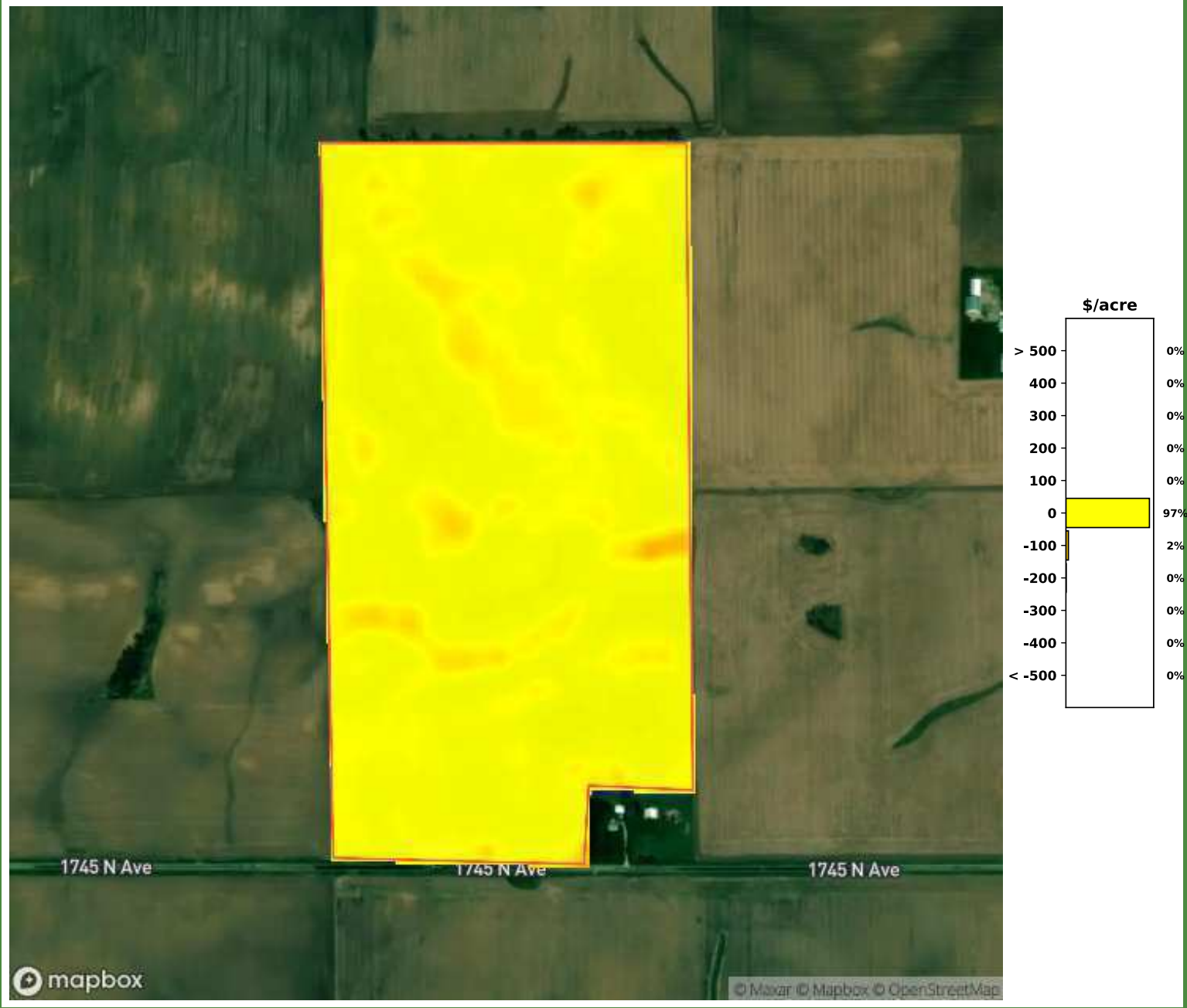


Multiyear Profitability Distribution (2019-2021)



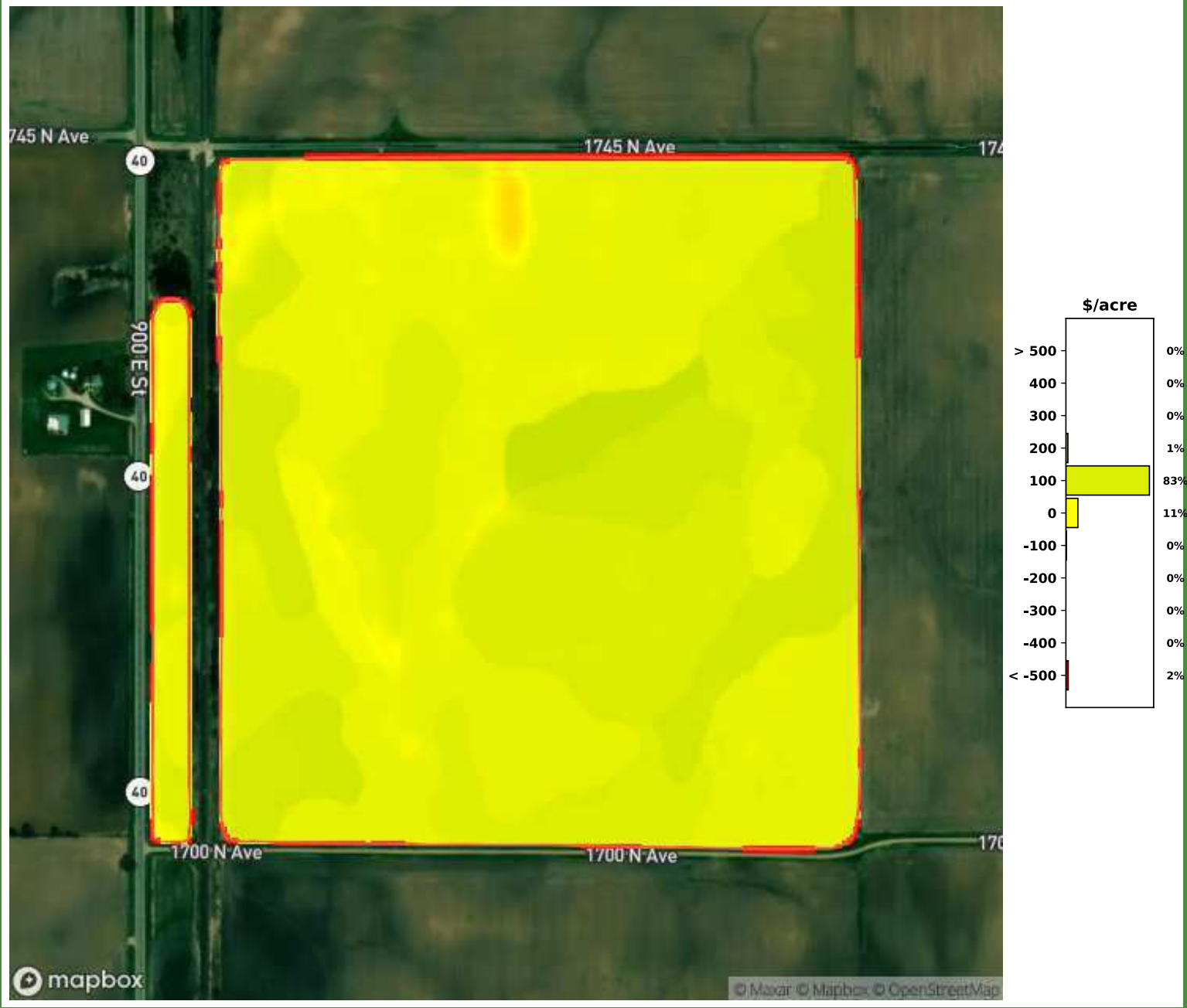
Data © OpenStreetMap contributors. Licensed under the Open Data Commons Open Database License. Design © Mapbox. Licensed according to the Mapbox Terms of Service.

Multiyear Profitability Distribution (2019-2021)



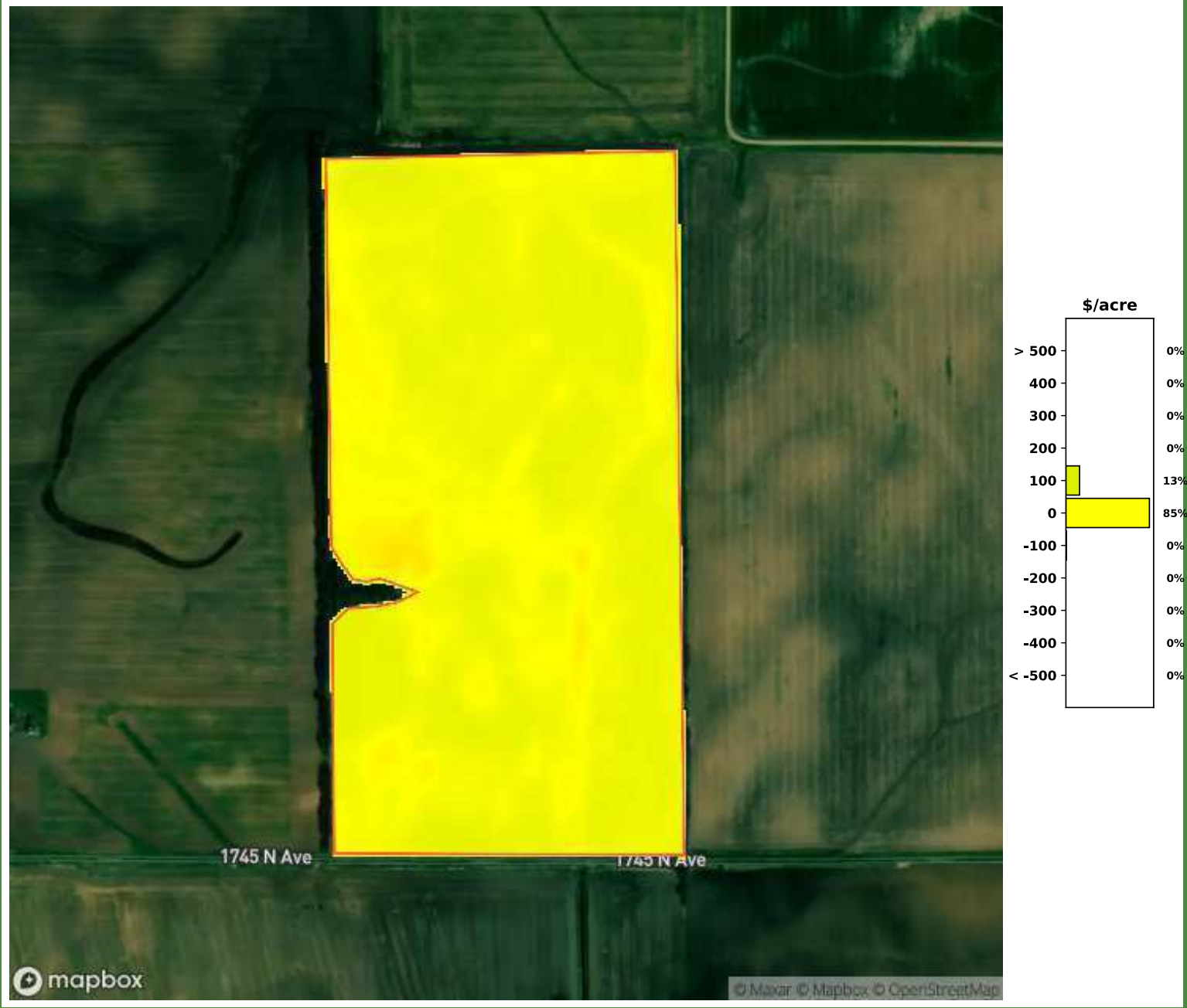
Data © OpenStreetMap contributors. Licensed under the Open Data Commons Open Database License. Design © Mapbox. Licensed according to the Mapbox Terms of Service.

Multiyear Profitability Distribution (2019-2021)



Data © OpenStreetMap contributors. Licensed under the Open Data Commons Open Database License. Design © Mapbox. Licensed according to the Mapbox Terms of Service.

Multiyear Profitability Distribution (2019-2021)



Data © OpenStreetMap contributors. Licensed under the Open Data Commons Open Database License. Design © Mapbox. Licensed according to the Mapbox Terms of Service.

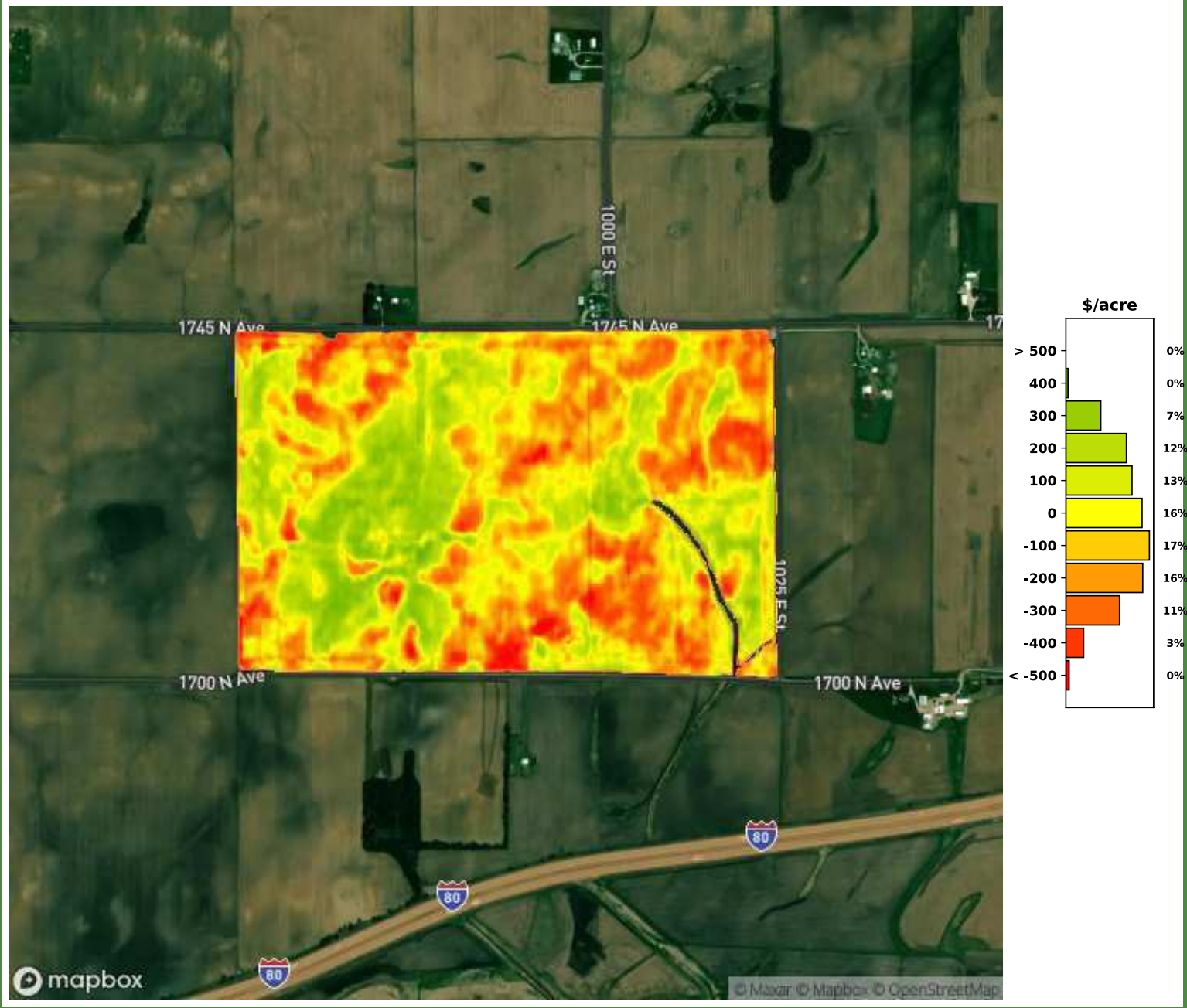


Multiyear Profitability Distribution (2019-2021)



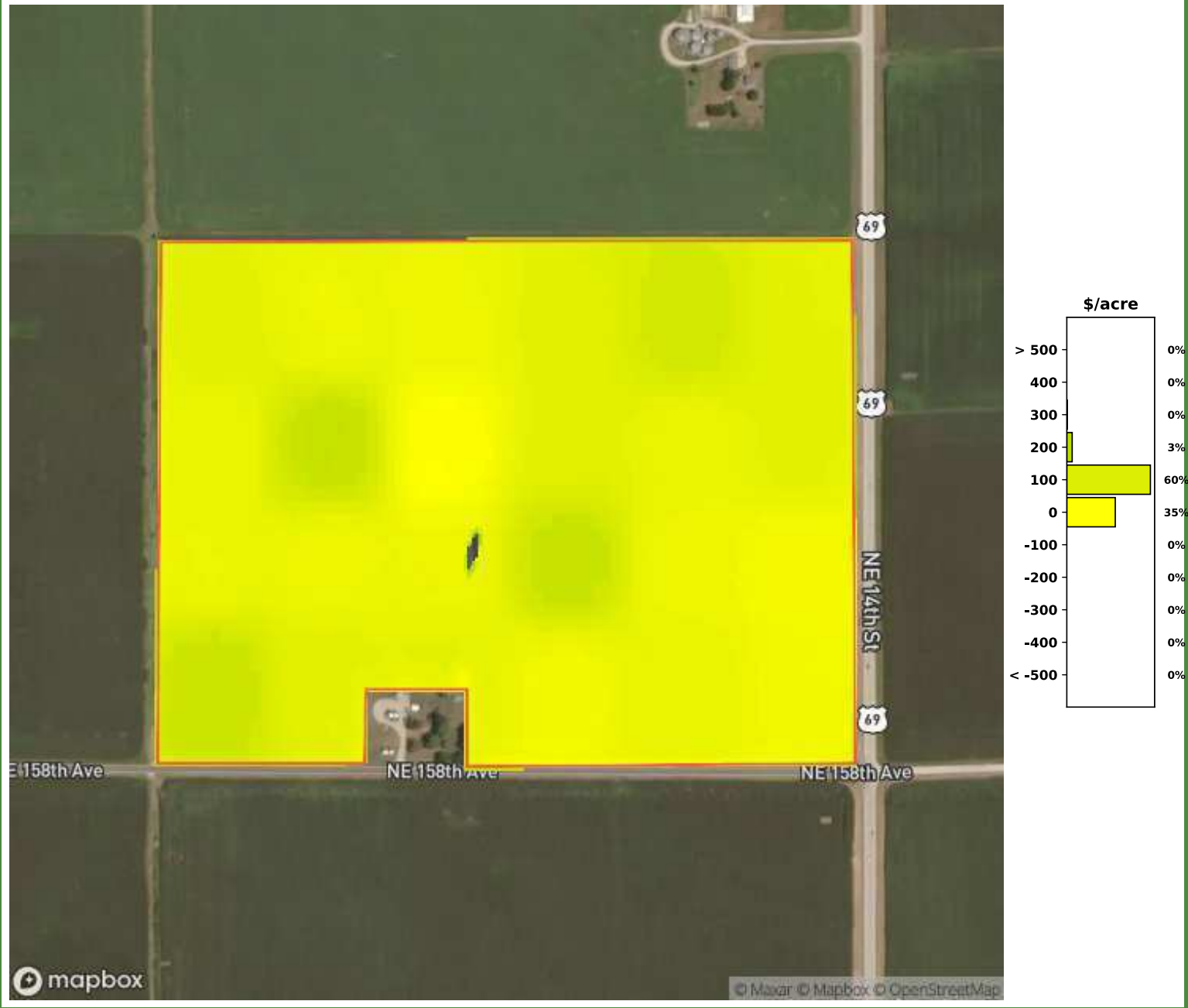
Data © OpenStreetMap contributors. Licensed under the Open Data Commons Open Database License. Design © Mapbox. Licensed according to the Mapbox Terms of Service.

Multiyear Profitability Distribution (2019-2021)



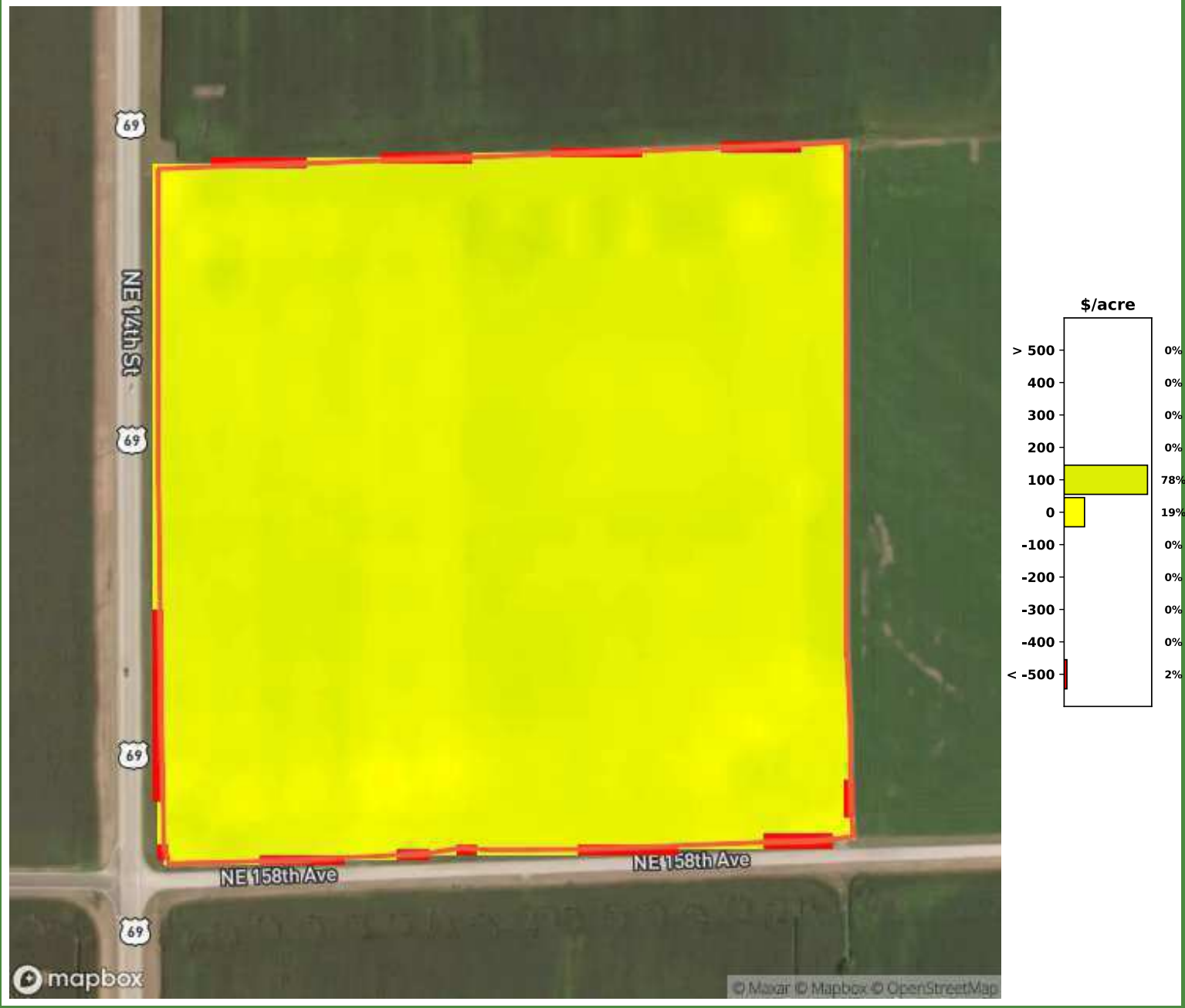
Data © OpenStreetMap contributors. Licensed under the Open Data Commons Open Database License. Design © Mapbox. Licensed according to the Mapbox Terms of Service.

Multiyear Profitability Distribution (2019-2021)



Data © OpenStreetMap contributors. Licensed under the Open Data Commons Open Database License. Design © Mapbox. Licensed according to the Mapbox Terms of Service.

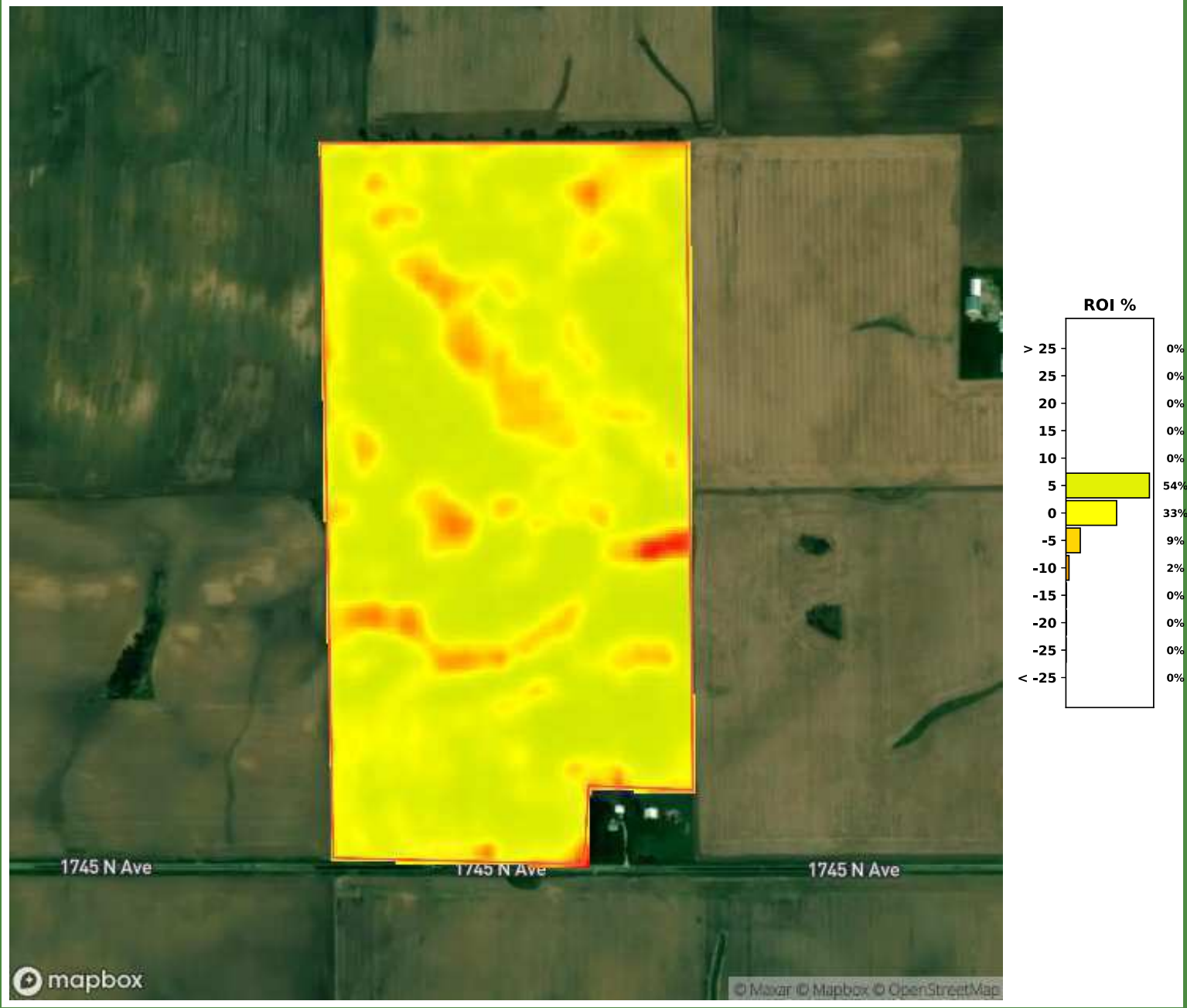
Multiyear Profitability Distribution (2019-2021)



Data © OpenStreetMap contributors. Licensed under the Open Data Commons Open Database License. Design © Mapbox. Licensed according to the Mapbox Terms of Service.

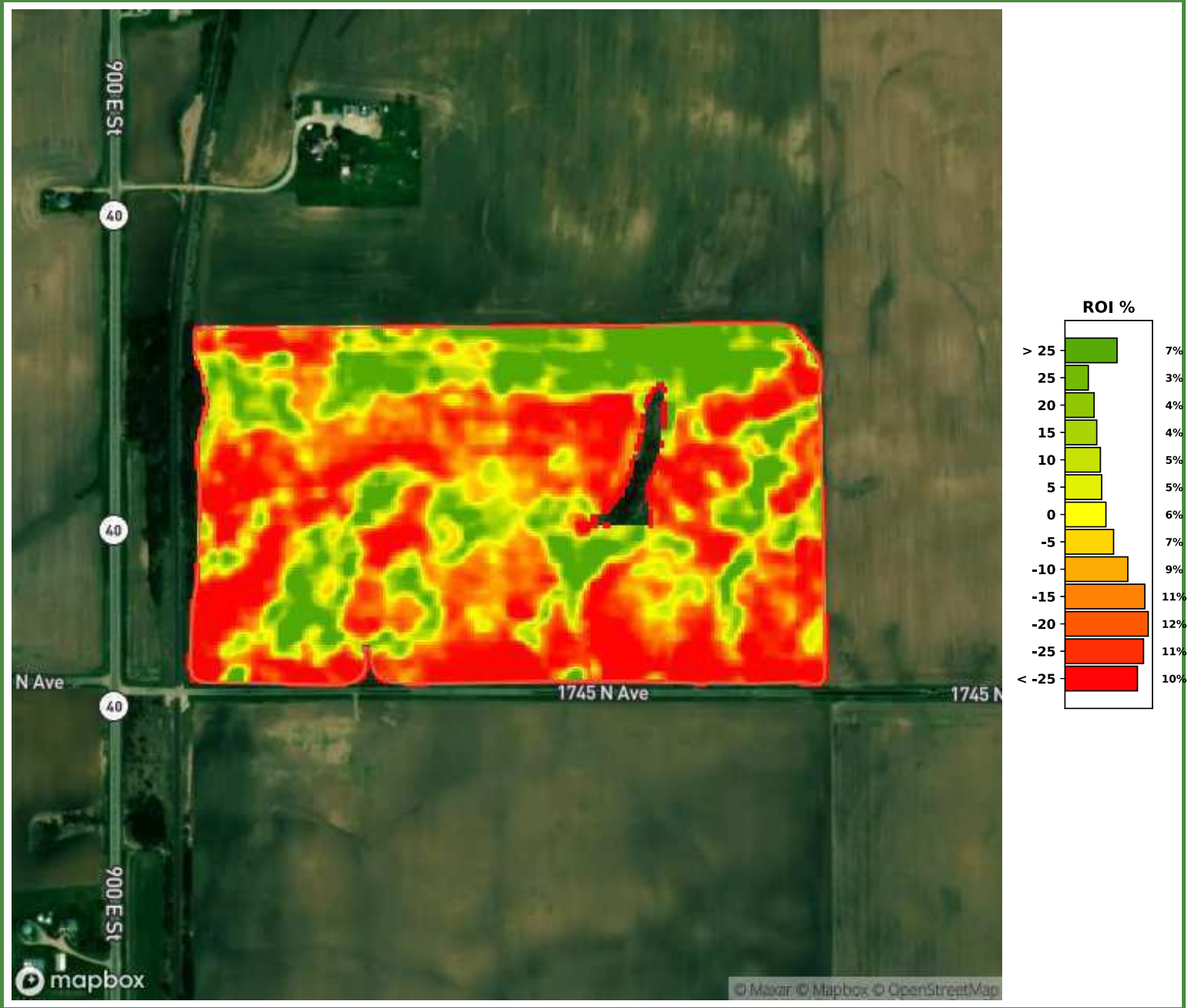


Multiyear ROI Distribution (2019-2021)



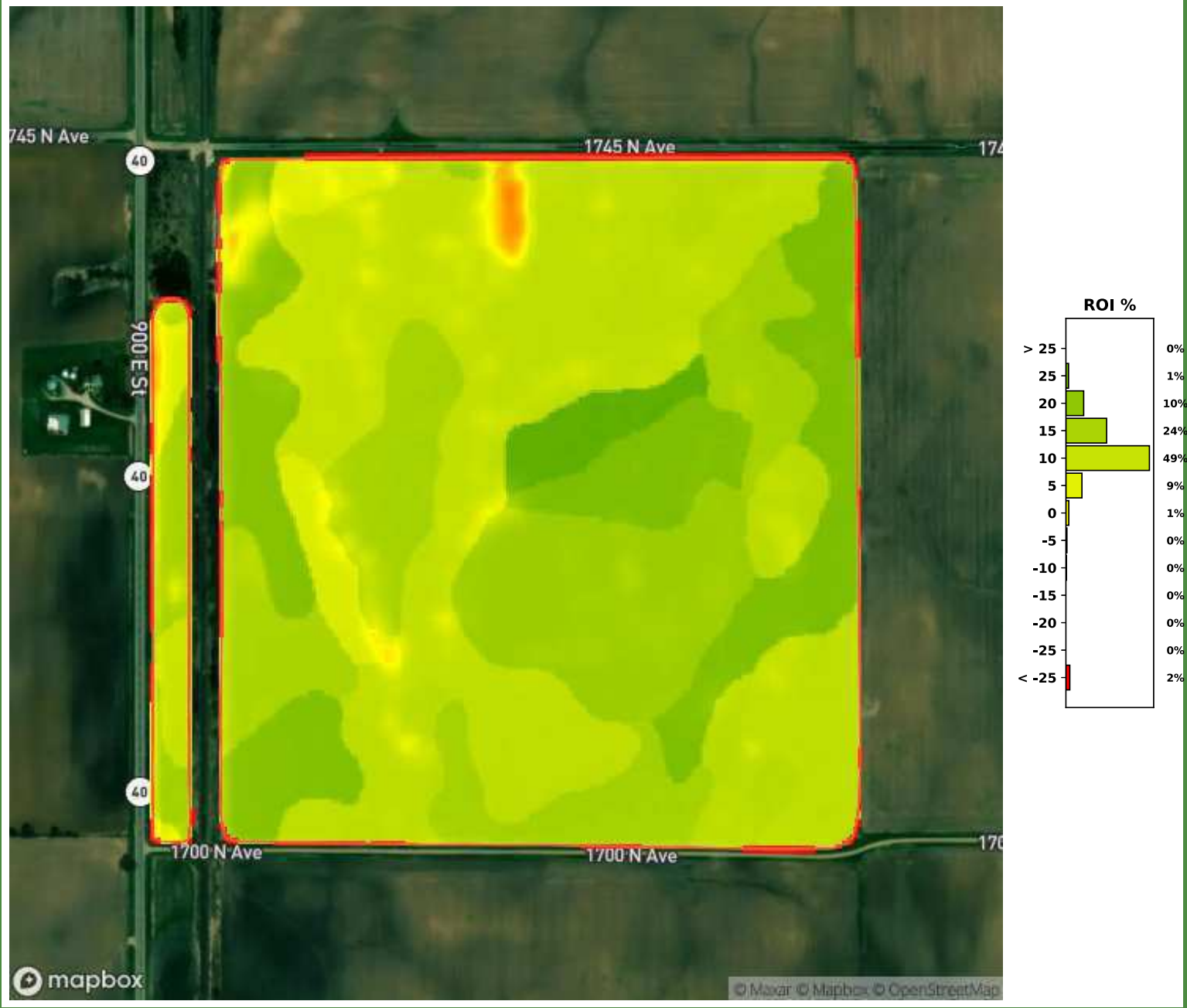
Data © OpenStreetMap contributors. Licensed under the Open Data Commons Open Database License. Design © Mapbox. Licensed according to the Mapbox Terms of Service.

Multiyear ROI Distribution (2019-2021)



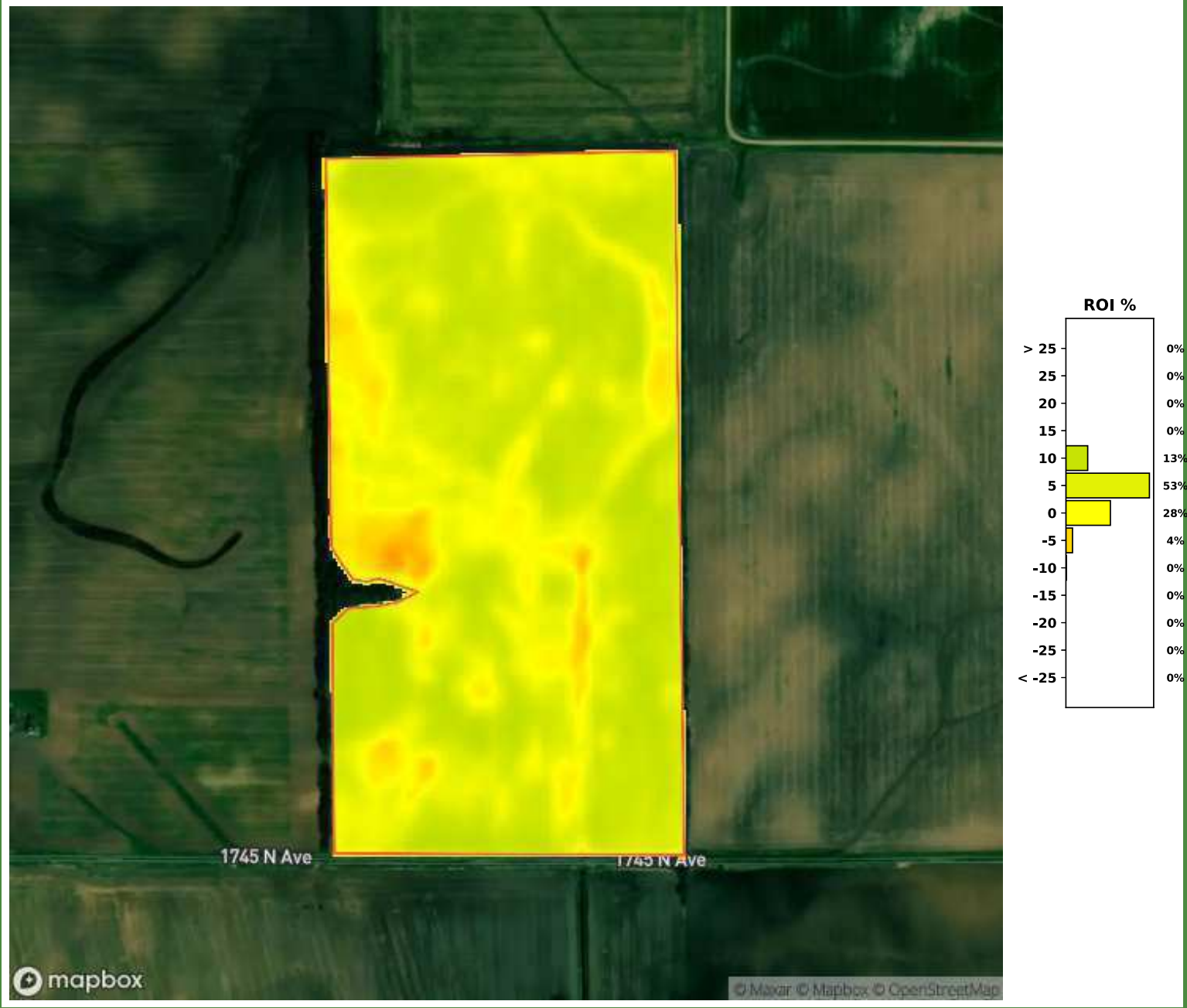
Data © OpenStreetMap contributors. Licensed under the Open Data Commons Open Database License. Design © Mapbox. Licensed according to the Mapbox Terms of Service.

Multiyear ROI Distribution (2019-2021)



Data © OpenStreetMap contributors. Licensed under the Open Data Commons Open Database License. Design © Mapbox. Licensed according to the Mapbox Terms of Service.

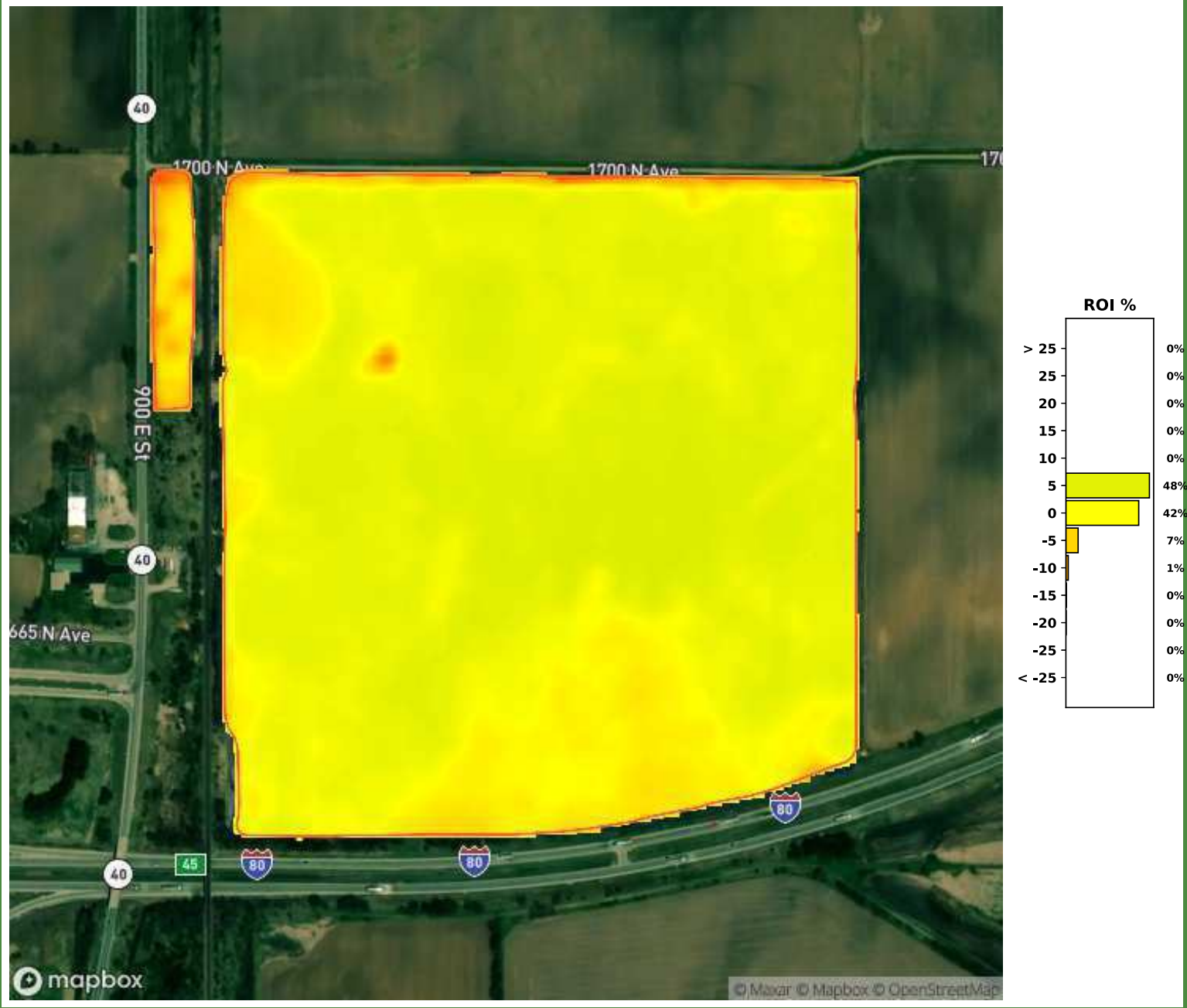
Multiyear ROI Distribution (2019-2021)



Data © OpenStreetMap contributors. Licensed under the Open Data Commons Open Database License. Design © Mapbox. Licensed according to the Mapbox Terms of Service.

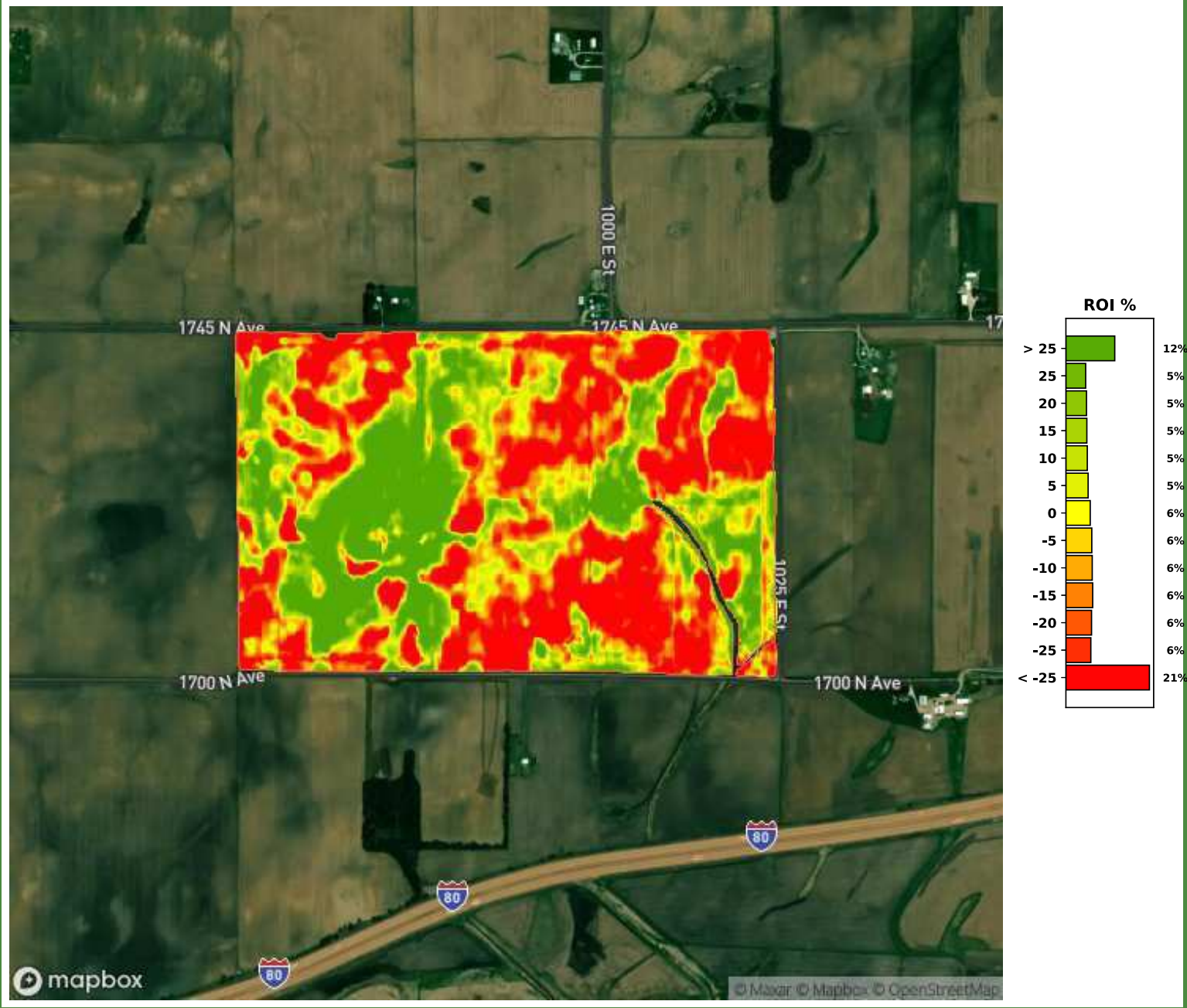


Multiyear ROI Distribution (2019-2021)



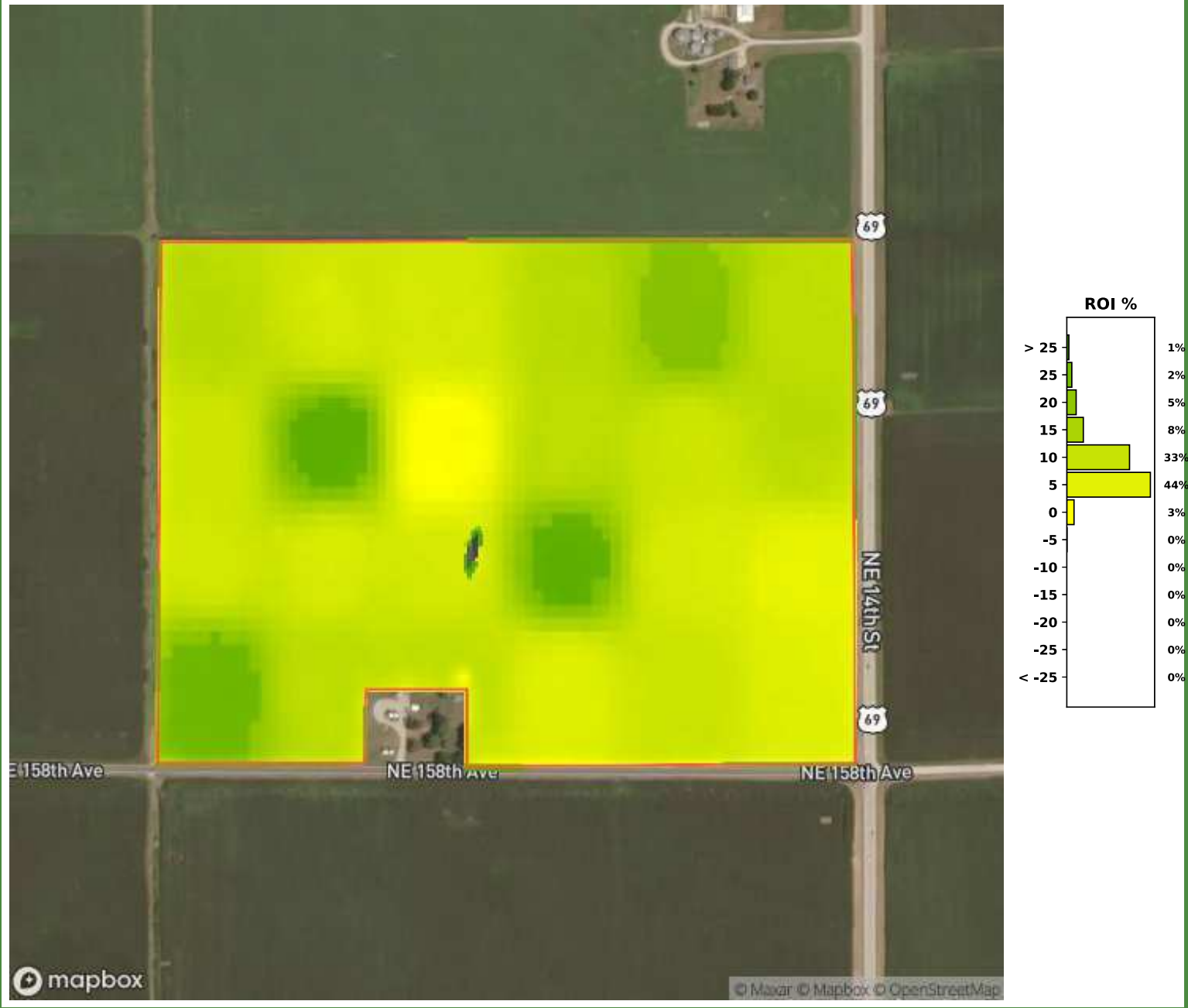
Data © OpenStreetMap contributors. Licensed under the Open Data Commons Open Database License. Design © Mapbox. Licensed according to the Mapbox Terms of Service.

Multiyear ROI Distribution (2019-2021)



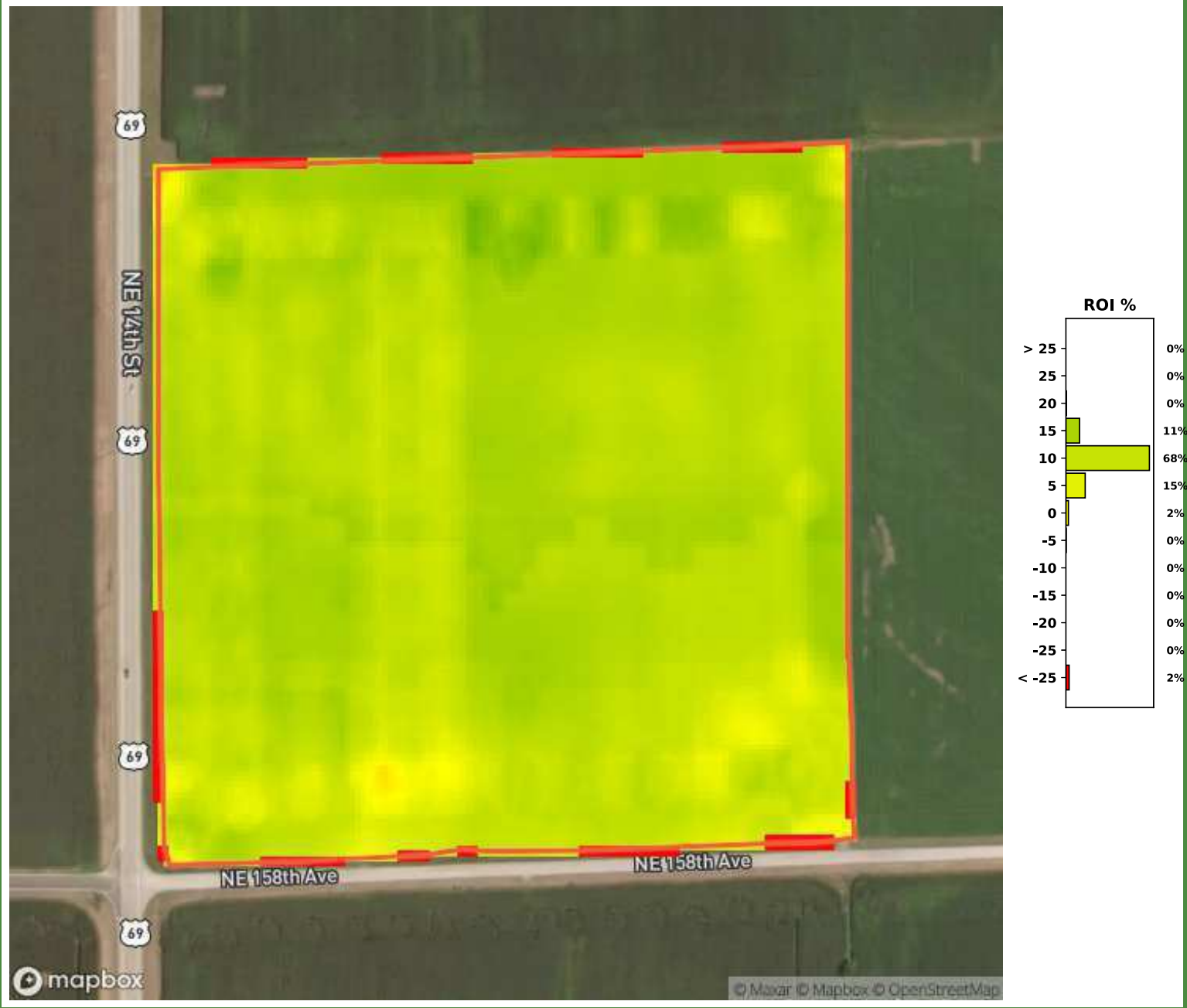
Data © OpenStreetMap contributors. Licensed under the Open Data Commons Open Database License. Design © Mapbox. Licensed according to the Mapbox Terms of Service.

Multiyear ROI Distribution (2019-2021)



Data © OpenStreetMap contributors. Licensed under the Open Data Commons Open Database License. Design © Mapbox. Licensed according to the Mapbox Terms of Service.

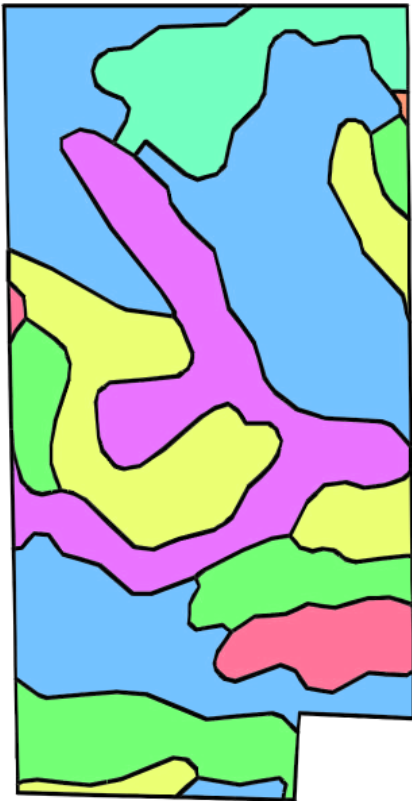
Multiyear ROI Distribution (2019-2021)



Data © OpenStreetMap contributors. Licensed under the Open Data Commons Open Database License. Design © Mapbox. Licensed according to the Mapbox Terms of Service.



## ABC Enterprises : East Farm : New Ground



Soil data is acquired from the USDA-NRCS SSURGO FY2018 product

### Map Details

State:	IL
County:	Bureau
QQQ:	
Location:	3-16N-7E
Township:	Concord township
Acres:	80.5

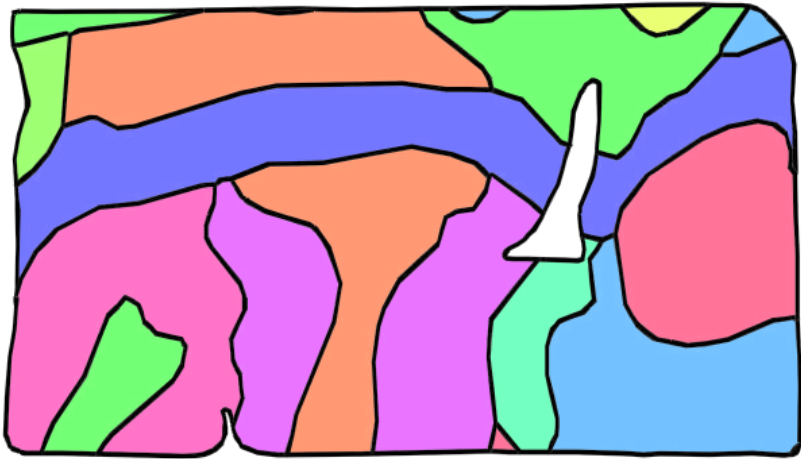
Code	Soil Description*	Acres	% of Field	Corn (bu/ac)†	Soybean (bu/ac)†	OM*	NCCPI*
622C2	Wyanet silt loam, 5 to 10 percent slopes, eroded	31.8	39.4	184	59	2.00	0.71
68A+	Sable silt loam, 0 to 2 percent slopes, overwash	13.5	16.7	231	75	3.00	0.91
60D3	La Rose clay loam, 10 to 18 percent slopes, severely eroded	13.4	16.6	154	50	0.75	0.47
622B2	Wyanet silt loam, 2 to 5 percent slopes, eroded	11.5	14.3	188	60	3.00	0.71
145B	Saybrook silt loam, 2 to 5 percent slopes	6.7	8.3	212	67	3.50	0.79
210A+	Lena silt loam, depressional, 0 to 2 percent slopes, overwash	3.6	4.5	210	66	5.00	0.61
154A	Flanagan silt loam, 0 to 2 percent slopes	0.1	0.1	231	74	4.00	0.91
		Weighted Average		191	61	2.36	0.70

Organic matter is calculated using a depth weighted average of the top 20 cm for all components.

†Corn and Soybean non-irrigated yields are calculated via AgSolver's data sets.

\*Soil data is acquired from the USDA-NRCS SSURGO FY2018 product

## ABC Enterprises : East Farm : North Field



Soil data is acquired from the USDA-NRCS SSURGO FY2018 product

### Map Details

State:	IL
County:	Bureau
QQQ:	
Location:	3-16N-7E
Township:	Concord township
Acres:	69.7

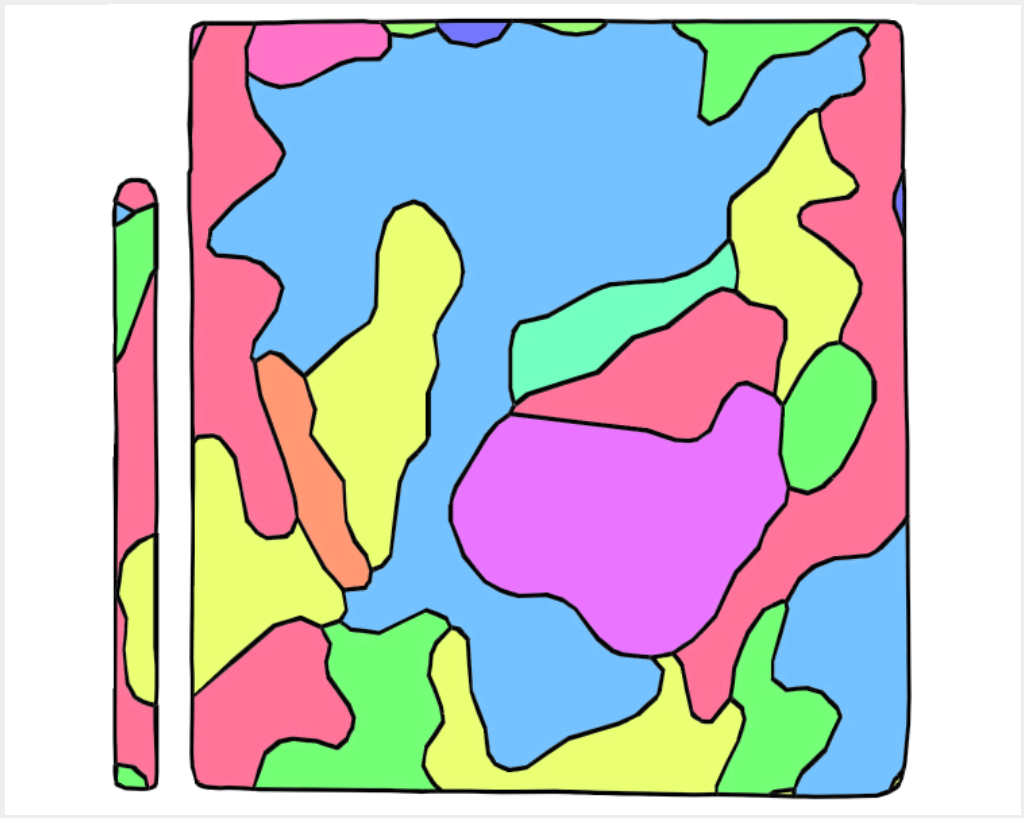
Code	Soil Description*	Acres	% of Field	Corn (bu/ac)†	Soybean (bu/ac)†	OM*	NCCPI*
145B	Saybrook silt loam, 2 to 5 percent slopes	13.2	18.9	212	67	3.50	0.79
60D3	La Rose clay loam, 10 to 18 percent slopes, severely eroded	11.9	17.0	154	50	0.75	0.47
145C2	Saybrook silt loam, 5 to 10 percent slopes, eroded	10.1	14.5	197	62	3.00	0.72
60D2	La Rose silt loam, 10 to 18 percent slopes, eroded	8.5	12.2	169	55	2.00	0.51
68A+	Sable silt loam, 0 to 2 percent slopes, overwash	8.0	11.4	231	75	3.00	0.91
622B2	Wyanet silt loam, 2 to 5 percent slopes, eroded	7.3	10.5	188	60	3.00	0.71
622C2	Wyanet silt loam, 5 to 10 percent slopes, eroded	6.7	9.7	184	59	2.00	0.71
60C2	La Rose silt loam, 5 to 10 percent slopes, eroded	2.5	3.6	182	59	2.00	0.57
198A	Elburn silt loam, 0 to 2 percent slopes	1.1	1.6	238	73	4.50	0.91
210A+	Lena silt loam, depressional, 0 to 2 percent slopes, overwash	0.4	0.5	210	66	5.00	0.61
Weighted Average		191		61		2.49	0.68

Organic matter is calculated using a depth weighted average of the top 20 cm for all components.

†Corn and Soybean non-irrigated yields are calculated via AgSolver's data sets.

\*Soil data is acquired from the USDA-NRCS SSURGO FY2018 product

## ABC Enterprises : East Farm : Center Field



Soil data is acquired from the USDA-NRCS SSURGO FY2018 product

### Map Details

State:	IL
County:	Bureau
QQQ:	
Location:	3-16N-7E
Township:	Concord township
Acres:	145.6

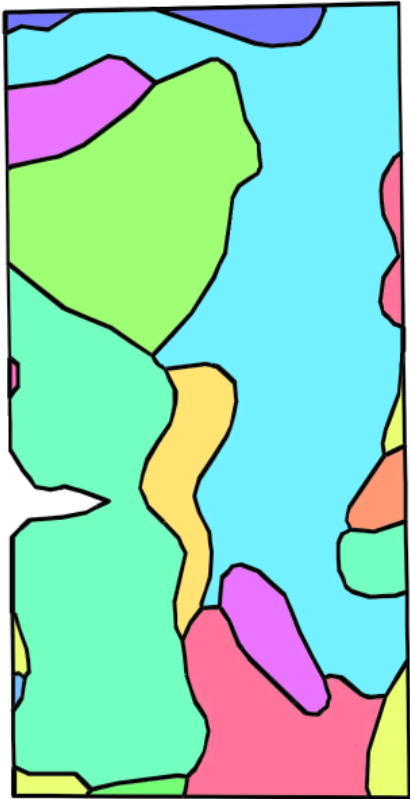
Code	Soil Description*	Acres	% of Field	Corn (bu/ac)†	Soybean (bu/ac)†	OM*	NCCPI*
622C2	Wyanet silt loam, 5 to 10 percent slopes, eroded	50.9	35.0	184	59	2.00	0.71
68A+	Sable silt loam, 0 to 2 percent slopes, overwash	32.4	22.2	231	75	3.00	0.91
145B2	Saybrook silt loam, 2 to 5 percent slopes, eroded	24.6	16.9	203	64	3.00	0.70
210A+	Lena silt loam, depressional, 0 to 2 percent slopes, overwash	15.2	10.4	210	66	5.00	0.61
622B2	Wyanet silt loam, 2 to 5 percent slopes, eroded	13.9	9.5	188	60	3.00	0.71
59A	Lisbon silt loam, 0 to 2 percent slopes	3.4	2.4	255	79	4.00	0.79
60C3	La Rose clay loam, 5 to 10 percent slopes, severely eroded	2.6	1.8	167	54	0.75	0.51
60D2	La Rose silt loam, 10 to 18 percent slopes, eroded	1.8	1.3	169	55	2.00	0.51
145B	Saybrook silt loam, 2 to 5 percent slopes	0.5	0.3	212	67	3.50	0.79
145C2	Saybrook silt loam, 5 to 10 percent slopes, eroded	0.3	0.2	197	62	3.00	0.72
		<b>Weighted Average</b>	<b>202</b>	<b>65</b>	<b>2.83</b>	<b>0.74</b>	

Organic matter is calculated using a depth weighted average of the top 20 cm for all components.

†Corn and Soybean non-irrigated yields are calculated via AgSolver's data sets.

\*Soil data is acquired from the USDA-NRCS SSURGO FY2018 product

## ABC Enterprises : East Farm : Northwest Field



Soil data is acquired from the USDA-NRCS SSURGO FY2018 product

### Map Details

State:	IL
County:	Bureau
QQQ:	
Location:	4-16N-7E
Township:	Concord township
Acres:	76.9

Code	Soil Description*	Acres	% of Field	Corn (bu/ac)†	Soybean (bu/ac)†	OM*	NCCPI*
68A+	Sable silt loam, 0 to 2 percent slopes, overwash	28.4	36.8	231	75	3.00	0.91
622C2	Wyanet silt loam, 5 to 10 percent slopes, eroded	18.8	24.5	184	59	2.00	0.71
290B	Warsaw loam, 2 to 5 percent slopes	11.4	14.8	197	62	3.50	0.68
67A	Harpster silty clay loam, 0 to 2 percent slopes	6.4	8.3	221	69	5.00	0.79
198A	Elburn silt loam, 0 to 2 percent slopes	4.4	5.8	238	73	4.50	0.91
199A	Plano silt loam, 0 to 2 percent slopes	3.0	3.9	238	73	3.50	0.92
622B2	Wyanet silt loam, 2 to 5 percent slopes, eroded	1.8	2.4	188	60	3.00	0.71
290A	Warsaw loam, 0 to 2 percent slopes	1.3	1.7	197	62	3.50	0.70
152A	Drummer silty clay loam, 0 to 2 percent slopes	0.4	0.5	233	75	5.50	0.83
145B2	Saybrook silt loam, 2 to 5 percent slopes, eroded	0.8	1.1	203	64	3.00	0.70
60C2	La Rose silt loam, 5 to 10 percent slopes, eroded	0.1	0.1	182	59	2.00	0.57
145B	Saybrook silt loam, 2 to 5 percent slopes	0.1	0.1	212	67	3.50	0.79
Weighted Average		212	68	3.12	0.80		

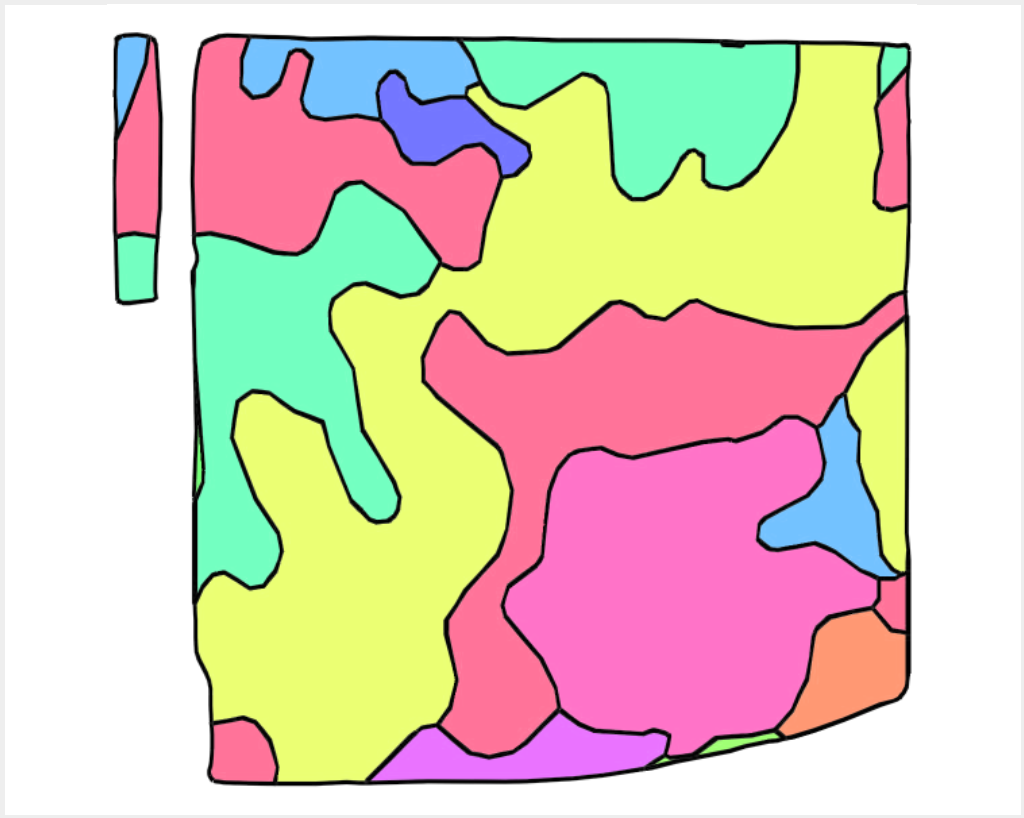
Organic matter is calculated using a depth weighted average of the top 20 cm for all components.

†Corn and Soybean non-irrigated yields are calculated via AgSolver's data sets.

\*Soil data is acquired from the USDA-NRCS SSURGO FY2018 product



## ABC Enterprises : East Farm : South Field



Soil data is acquired from the USDA-NRCS SSURGO FY2018 product

### Map Details

State:	IL
County:	Bureau
QQQ:	
Location:	10-16N-7E
Township:	Concord township
Acres:	131.9

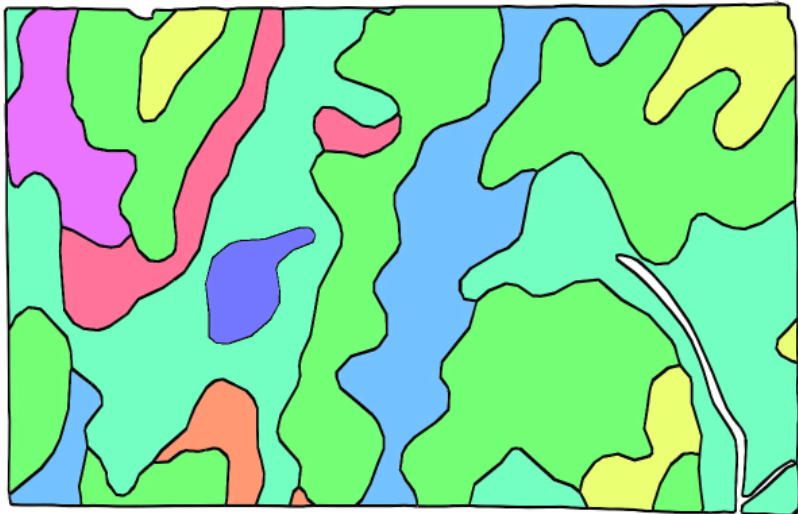
Code	Soil Description*	Acres	% of Field	Corn (bu/ac)†	Soybean (bu/ac)†	OM*	NCCPI*
622C2	Wyanet silt loam, 5 to 10 percent slopes, eroded	46.3	35.1	184	59	2.00	0.71
68A+	Sable silt loam, 0 to 2 percent slopes, overwash	30.4	23.1	231	75	3.00	0.91
145B2	Saybrook silt loam, 2 to 5 percent slopes, eroded	20.8	15.7	203	64	3.00	0.70
638A	Muskego muck, 0 to 2 percent slopes	20.1	15.3	208	66	75.00	0.89
622B2	Wyanet silt loam, 2 to 5 percent slopes, eroded	6.4	4.8	188	60	3.00	0.71
199B	Plano silt loam, 2 to 5 percent slopes	3.0	2.3	236	71	3.50	0.94
290C2	Warsaw silt loam, 5 to 10 percent slopes, eroded	2.5	1.9	184	58	2.00	0.61
60C3	La Rose clay loam, 5 to 10 percent slopes, severely eroded	1.9	1.4	167	54	0.75	0.51
369B	Waupecan silt loam, 2 to 5 percent slopes	0.3	0.2	227	70	3.50	0.84
802B	Orthents, loamy, undulating	0.2	0.1	184	59	1.25	0.75
Weighted Average		203	65	13.60	0.78		

Organic matter is calculated using a depth weighted average of the top 20 cm for all components.

†Corn and Soybean non-irrigated yields are calculated via AgSolver's data sets.

\*Soil data is acquired from the USDA-NRCS SSURGO FY2018 product

## ABC Enterprises : East Farm : East Field



Soil data is acquired from the USDA-NRCS SSURGO FY2018 product

### Map Details

State:	IL
County:	Bureau
QQQ:	
Location:	3-16N-7E
Township:	Concord township
Acres:	230.5

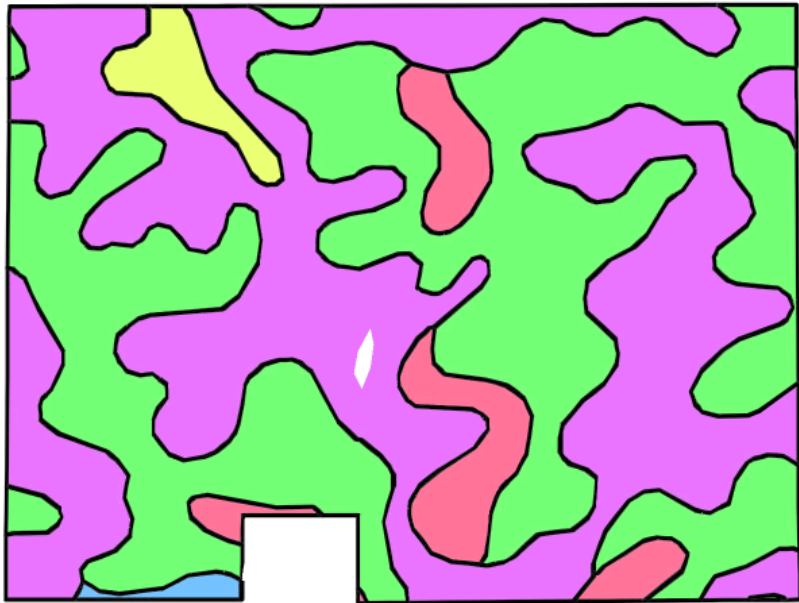
Code	Soil Description*	Acres	% of Field	Corn (bu/ac)†	Soybean (bu/ac)†	OM*	NCCPI*
622C2	Wyanet silt loam, 5 to 10 percent slopes, eroded	93.8	40.7	184	59	2.00	0.71
68A+	Sable silt loam, 0 to 2 percent slopes, overwash	66.3	28.8	231	75	3.00	0.91
145B2	Saybrook silt loam, 2 to 5 percent slopes, eroded	26.4	11.5	203	64	3.00	0.70
622B2	Wyanet silt loam, 2 to 5 percent slopes, eroded	15.5	6.7	188	60	3.00	0.71
59A	Lisbon silt loam, 0 to 2 percent slopes	10.8	4.7	255	79	4.00	0.79
145B	Saybrook silt loam, 2 to 5 percent slopes	9.4	4.1	212	67	3.50	0.79
210A+	Lena silt loam, depressional, 0 to 2 percent slopes, overwash	4.3	1.9	210	66	5.00	0.61
149A	Brenton silt loam, 0 to 2 percent slopes	4.0	1.7	236	71	4.00	0.94
		Weighted Average		206	66	2.72	0.77

Organic matter is calculated using a depth weighted average of the top 20 cm for all components.

†Corn and Soybean non-irrigated yields are calculated via AgSolver's data sets.

\*Soil data is acquired from the USDA-NRCS SSURGO FY2018 product

## ABC Enterprises : West Farm : West 80



Soil data is acquired from the USDA-NRCS SSURGO FY2018 product

### Map Details

State:	IA
County:	Polk
QQQ:	SESENW
Location:	2-81N-24W
Township:	Lincoln township
Acres:	111.3

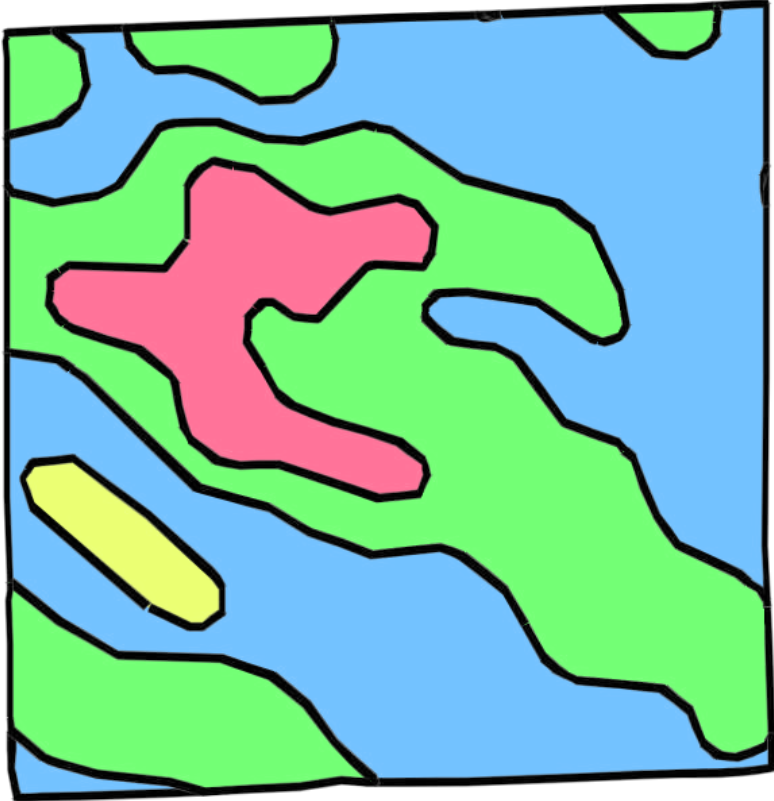
Code	Soil Description*	Acres	% of Field	Corn (bu/ac) <sup>†</sup>	Soybean (bu/ac) <sup>†</sup>	OM*	CSR2*	NCCPI*
L55	Nicollet loam, 1 to 3 percent slopes	50.4	45.3	197	56	6.00	91	0.86
L107	Webster clay loam, Bemis moraine, 0 to 2 percent slopes	50.3	45.2	194	55	7.00	88	0.84
L138B	Clarion loam, Bemis moraine, 2 to 6 percent slopes	7.4	6.6	194	55	3.50	88	0.81
L95	Harps clay loam, Bemis moraine, 0 to 2 percent slopes	2.6	2.3	175	50	7.00	75	0.81
L507	Canisteo clay loam, Bemis moraine, 0 to 2 percent slopes	0.6	0.6	192	55	7.00	87	0.82
		<b>Weighted Average</b>		<b>195</b>	<b>55</b>	<b>6.31</b>	<b>89.0</b>	<b>0.85</b>

Organic matter is calculated using a depth weighted average of the top 20 cm for all components.

<sup>†</sup>Corn and Soybean non-irrigated yields are calculated via AgSolver's data sets.

\*Soil data is acquired from the USDA-NRCS SSURGO FY2018 product

## ABC Enterprises : West Farm : The 40



Soil data is acquired from the USDA-NRCS SSURGO FY2018 product

### Map Details

State:	IA
County:	Polk
QQQ:	SWSWNE
Location:	1-81N-24W
Township:	Lincoln township
Acres:	37.7

Code	Soil Description*	Acres	% of Field	Corn (bu/ac)†	Soybean (bu/ac)†	OM*	CSR2*	NCCPI*
L107	Webster clay loam, Bemis moraine, 0 to 2 percent slopes	17.8	47.4	194	55	7.00	88	0.84
L55	Nicollet loam, 1 to 3 percent slopes	15.2	40.3	197	56	6.00	91	0.86
L138B	Clarion loam, Bemis moraine, 2 to 6 percent slopes	3.7	9.9	194	55	3.50	88	0.81
L95	Harps clay loam, Bemis moraine, 0 to 2 percent slopes	0.9	2.5	175	50	7.00	75	0.81
Weighted Average		195		55	6.25	88.9	0.84	

Organic matter is calculated using a depth weighted average of the top 20 cm for all components.

†Corn and Soybean non-irrigated yields are calculated via AgSolver's data sets.

\*Soil data is acquired from the USDA-NRCS SSURGO FY2018 product



Field Topography



Image data provided by USGS

Field Topography



Image data provided by USGS



Image data provided by USGS



Field Topography



Image data provided by USGS

Field Topography



Image data provided by USGS





Image data provided by USGS



Image data provided by USGS

Field Topography

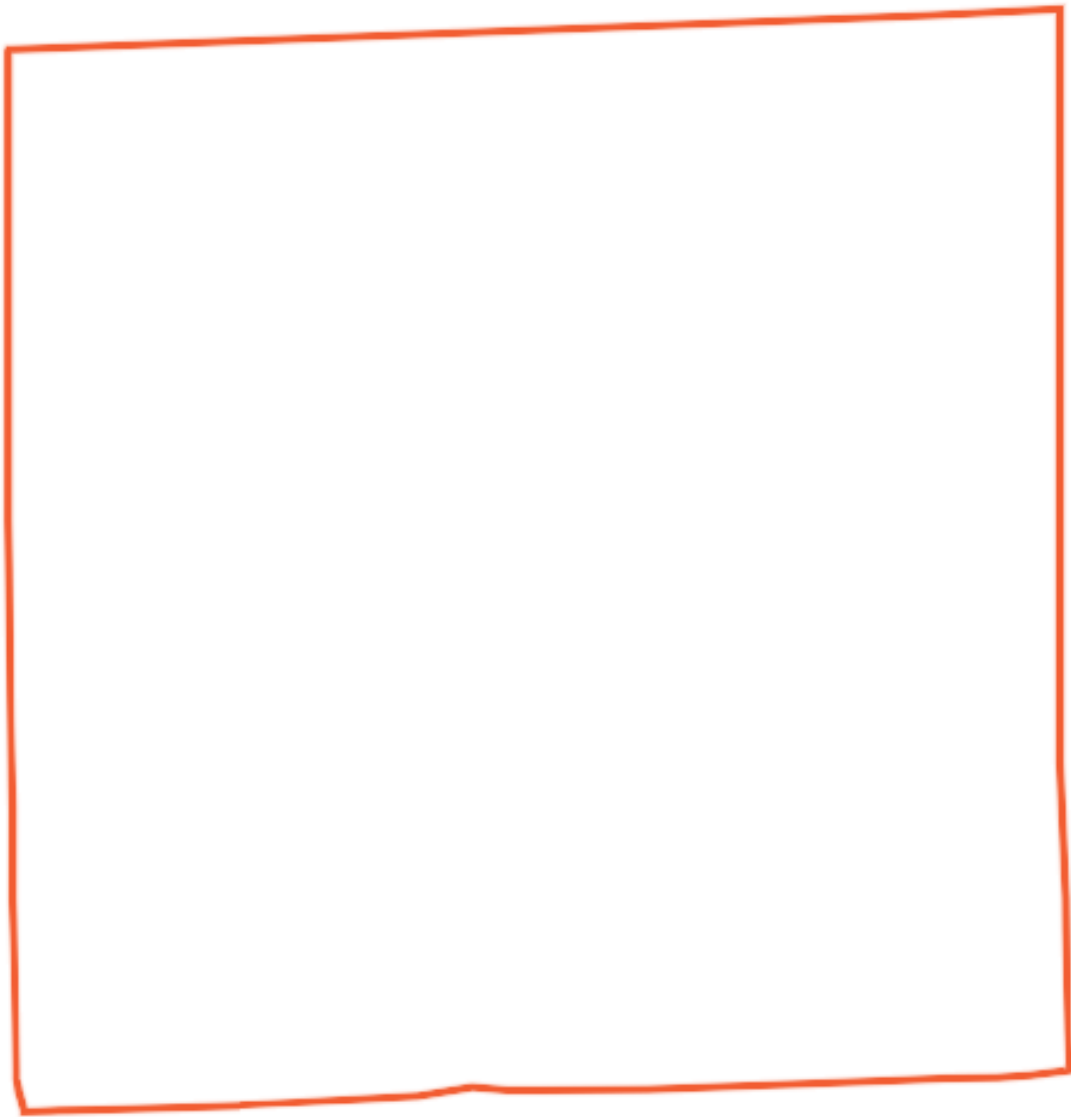


Image data provided by USGS