

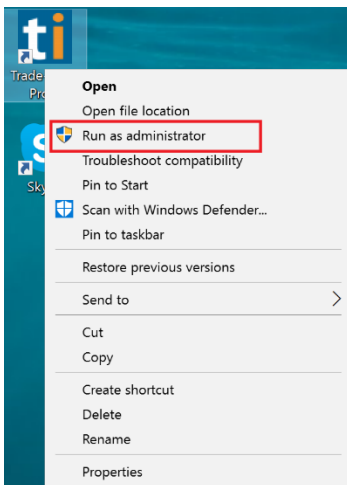


LINKING TRADE IDEAS TO REALTICK

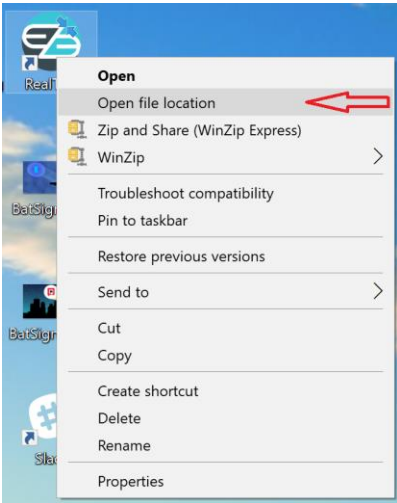
For linking to RealTick, you will want to have the current version of Trade Ideas installed. Please do a complete uninstall of your current version of Trade Ideas Pro, go to the download webpage (<http://www.trade-ideas.com/products/#download>) and download and install the latest Version.

It is recommended to start BOTH the Trade Ideas application and your Target application RealTick using "Run as Administrator" when you launch them (to allow access to system variables). This is not necessary for subsequent program launches after you have built the linking.

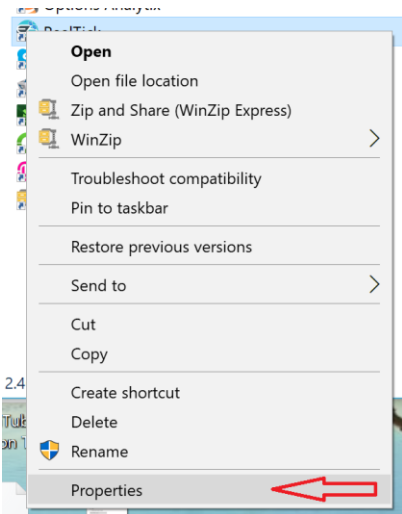
To Run Trade Ideas as Administrator, **Right-click** the application icon and from the context menu select **Run as administrator** to launch the application with elevated privileges.



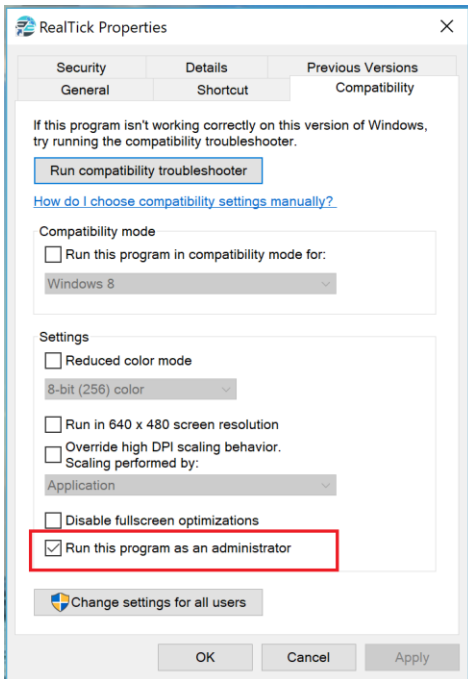
RealTick does not show the ability to Run as Administrator directly from its desktop shortcut. So you will need to right-click on the shortcut and select "Open File Location" to get to the actual RealTick.exe file location



Once you have the Realtick.exe file, right-click on that file icon to get to its properties



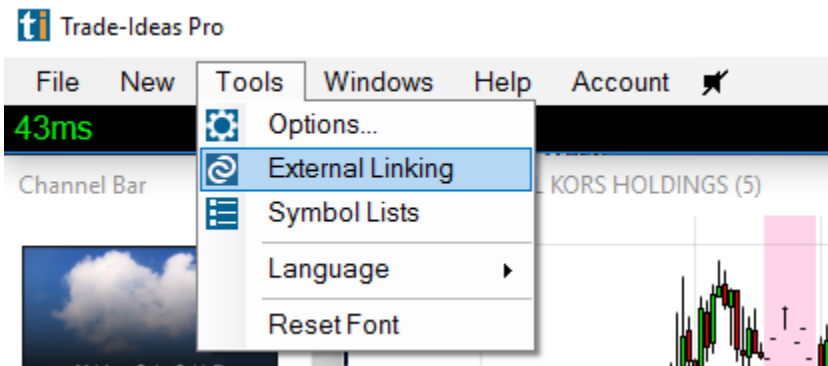
When you are in the Properties for the program, you will need to select the Compatibility page of the Program Properties, and place a check-mark next to the “Run this program as an administrator”



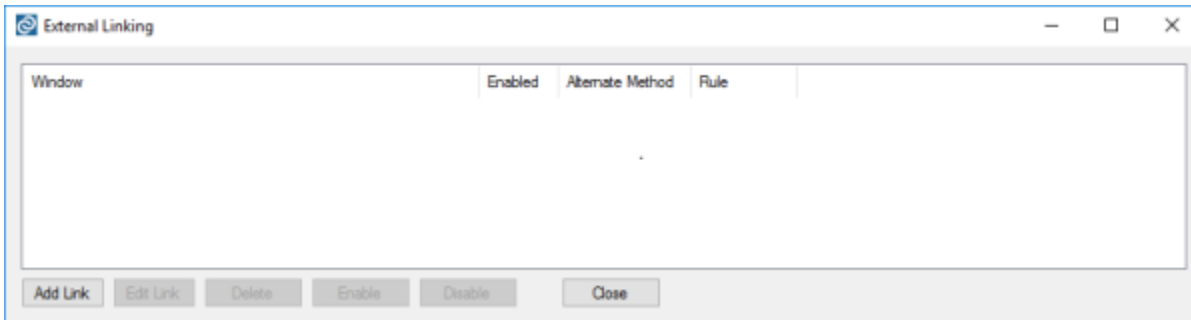
You can now launch the RealTick program from the desktop shortcut and it will run in the Run as Administrator mode necessary for creating Linking from Trade Ideas.

For use with RealTick, we have a specific rule set for the current version of RealTick, so these are the steps to follow to establish the link you need:

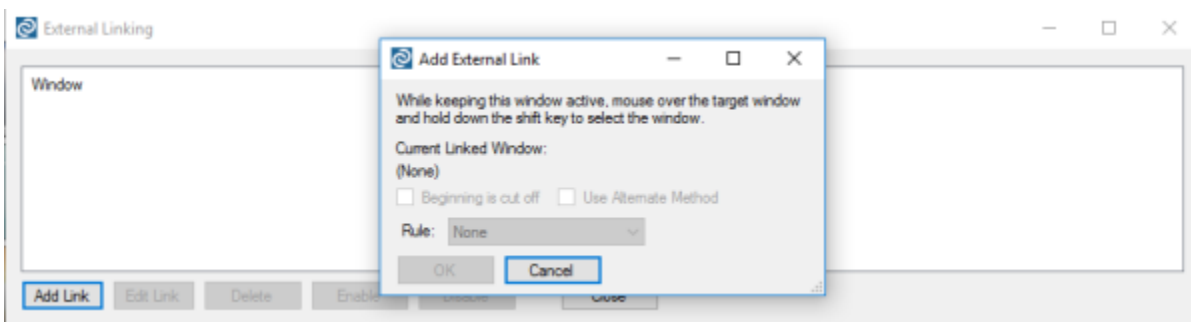
From the Tools menu, select the External Linking item



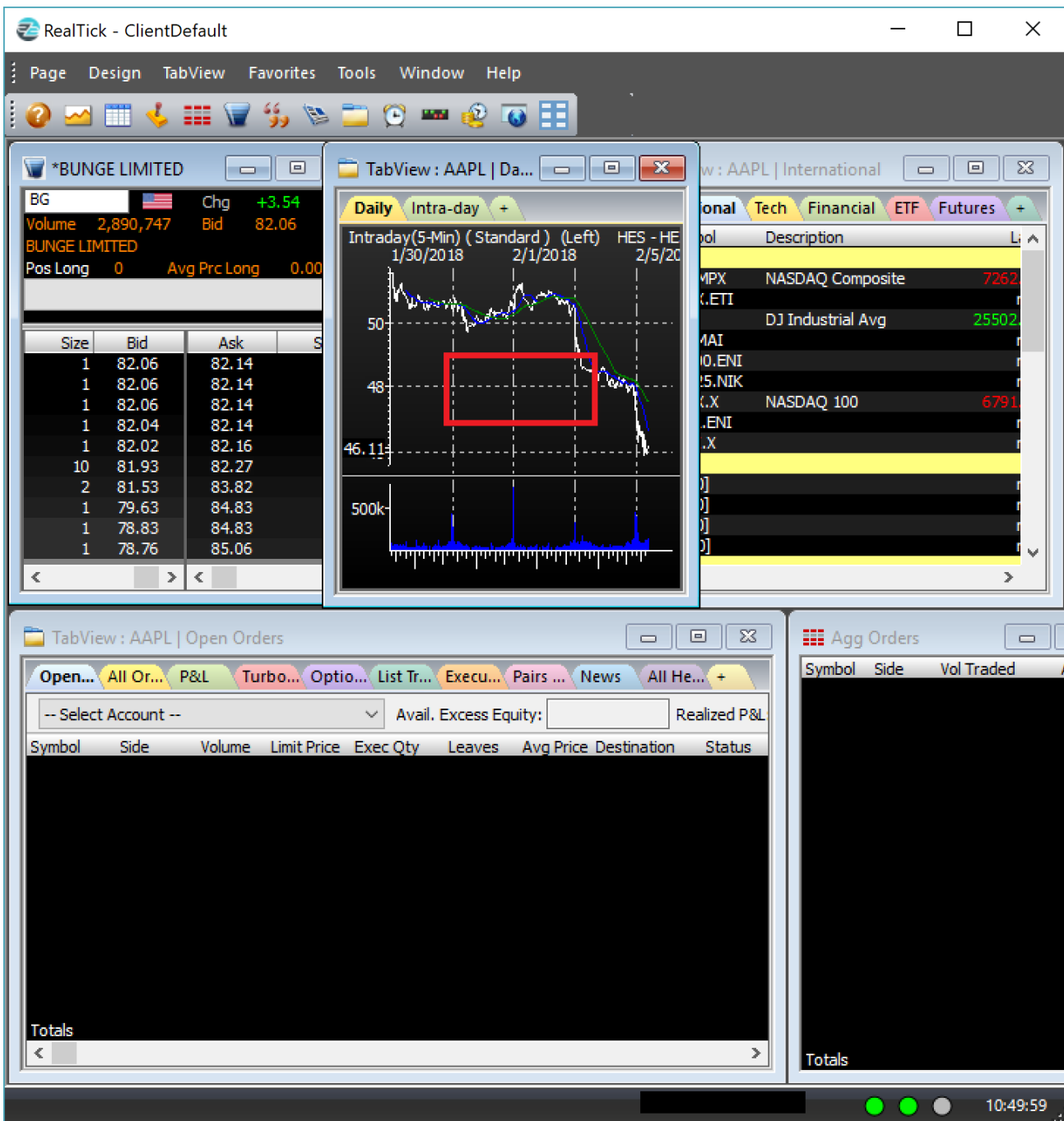
You will see the External Linking window:



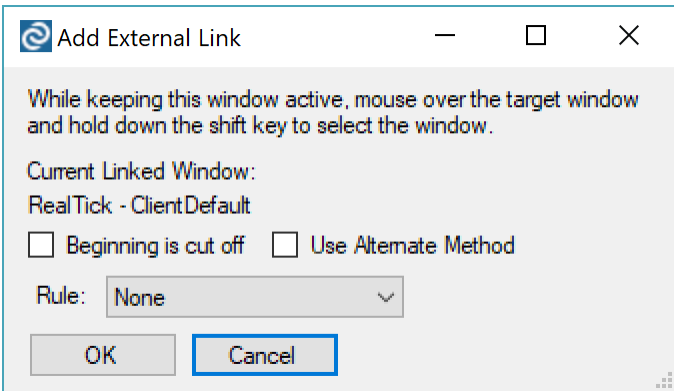
Select the Add Link button



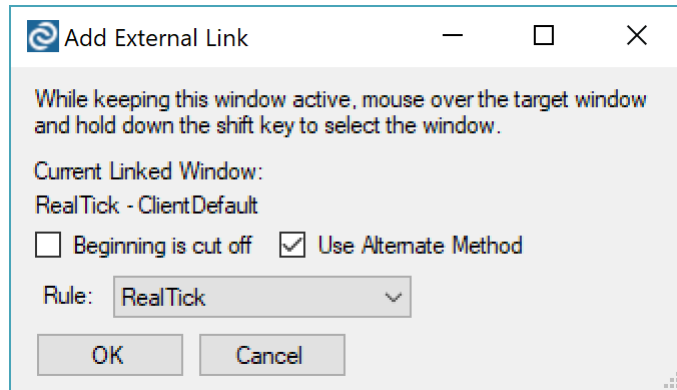
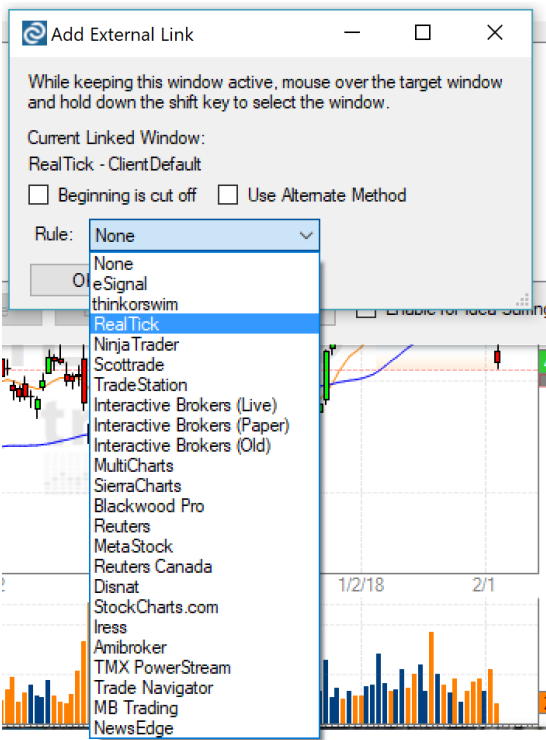
With the Add External Link window open, move your mouse cursor over the center of the Chart in the RealTick Chart window and click and release the Shift key. (See the Red Box in the image below.)



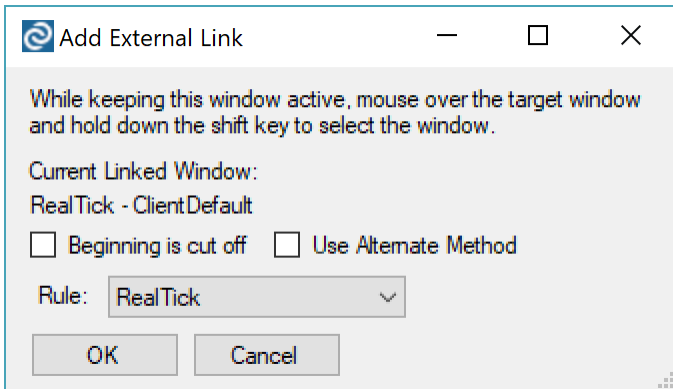
The Add External Link window should now show the current linked window as RealTick. Do not check either of the "Beginning is cut off" or "Use Alternate Method" checkboxes, and the Rule should be set to "None". Select the OK button to accept this setting.



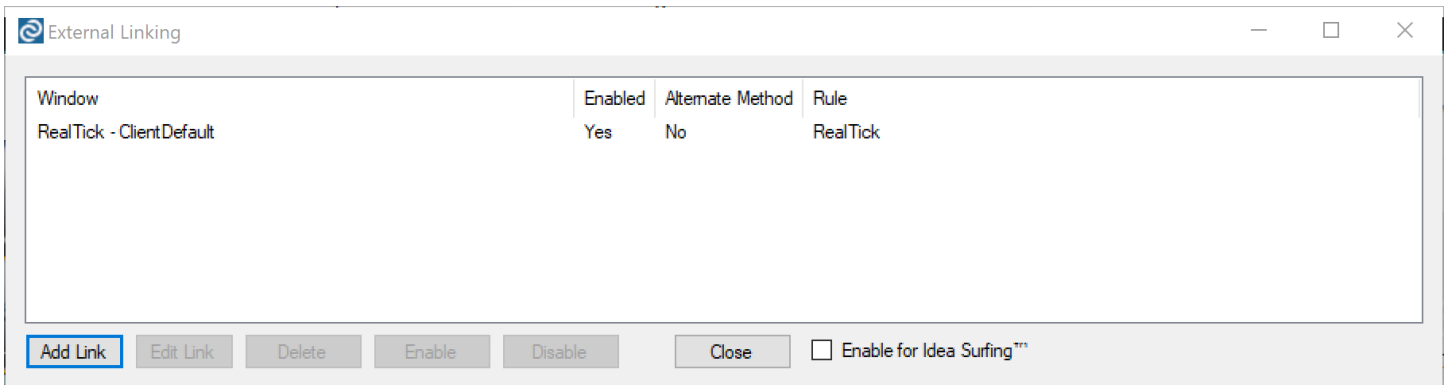
We also have a specific Rule available for RealTick. This can be used instead of the Rule = None, but when applied, it will also come with the “Use Alternate Method” box checked.



The “Use Alternate Method” box should be UN-checked for the current use with RealTick.

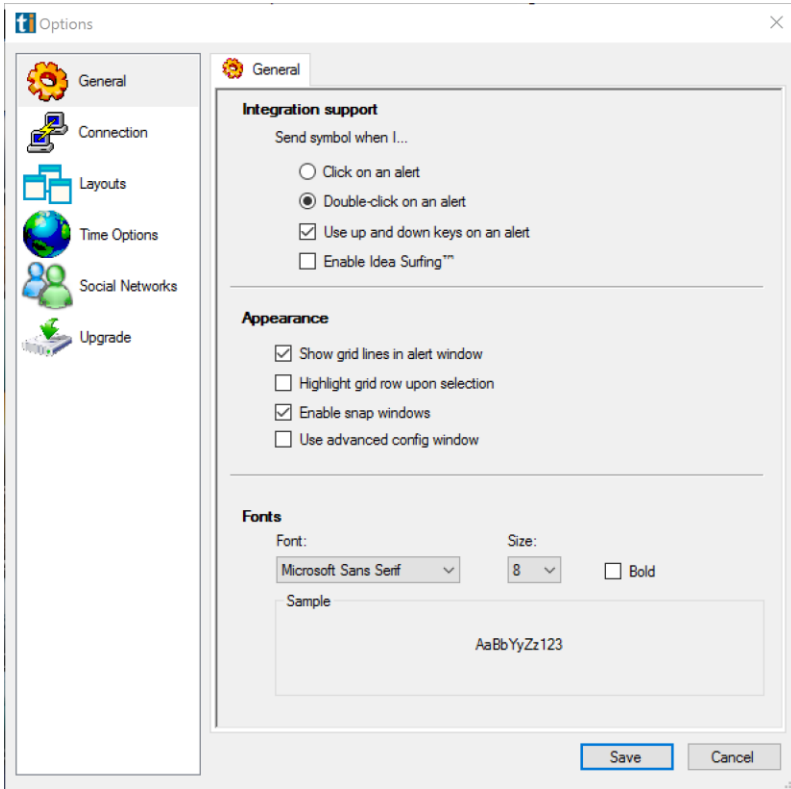


The External Linking window should list your RealTick link as enabled.



You may click the Close button to close the External Linking window and try the linking out by selecting a stock symbol and double-clicking it to see the symbol display in your charting application.

Additionally, it is helpful if you have gone into the Tools > Options > General menu and set the Integration support item to use Double-click on an alert, so that it is a positive action that is transferring the selected symbol. Click Save to retain this setting.



Now, when you double-click on a symbol in any of the windows of Trade Ideas, it should pass that value to the Chart window of RealTick.

If the linking seems to “stop working”, please place your cursor in the chart within RealTick and click there to tell RealTick “wake up and pay attention here”. This often happens after the program has performed some other function of its own and it has lost “Focus” on the linking field. It should continue to accept links sent to it until there is another interrupt within RealTick.





If you notice in the above External Linking window and Options window pictures, there are checkboxes for Enable Idea Surfing™. If you check the one in the External Linking dialog, the Idea Surfing™ will also be passed on to your linked chart. If you un-check the one found in the Options dialog, it will disable the Surfing feature completely.

Another thing that can be important. When you Start up the programs, be sure that you launch RealTick first, then Launch TI (the Target application needs to be there and ready to receive links). When you close the programs, Close TI first, then close RealTick. If you check TI after re-opening and the linking does not exist, you will need to re-link the two programs (please be sure to restart the programs with Run as Administrator).