

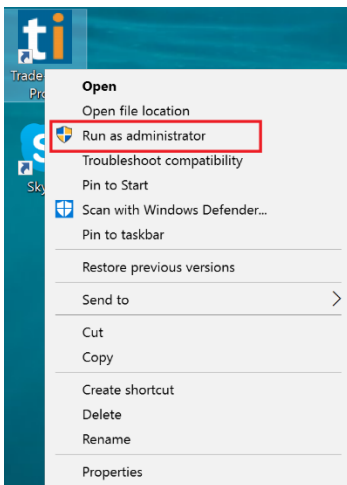


## LINKING TRADE IDEAS TO E\*TRADE PRO

For linking to E\*Trade Pro, you will want to have the current version of Trade Ideas installed. Please do a complete uninstall of your current version of Trade Ideas Pro, go to the download webpage ( <http://www.trade-ideas.com/products/#download> ) and download and install the latest Version.

It is recommended to start BOTH the Trade Ideas application and your Target application E\*Trade Pro using "Run as Administrator" when you launch them (to allow access to system variables). This is not necessary for subsequent program launches after you have built the linking.

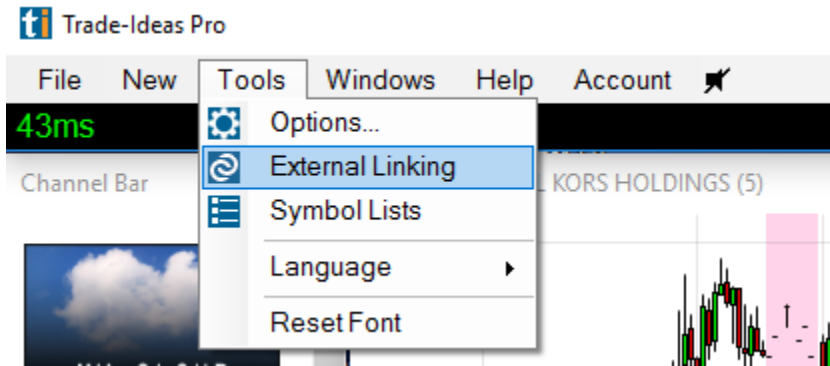
To Run as Administrator, **Right-click** the application icon and from the context menu select **Run as administrator** to launch the application with elevated privileges.



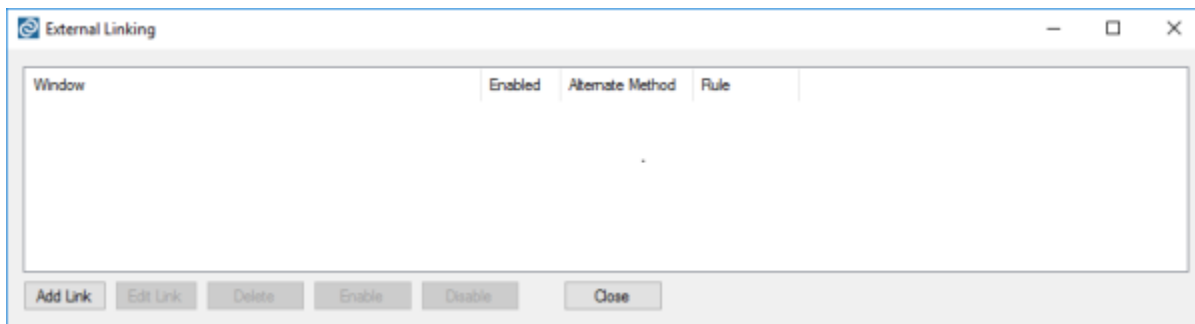
Repeat this process to launch the application that you are creating linking to (E\*Trade Pro).

For use with E\*Trade Pro, we do not have a specific rule set for the current version of E\*Trade Pro, so these are the steps to follow to establish the link you need:

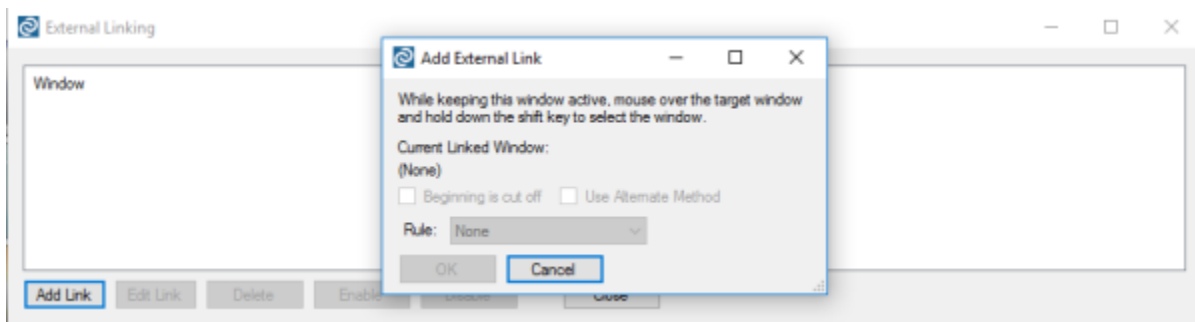
From the Tools menu, select the External Linking item



You will see the External Linking window:



Select the Add Link button



With the Add External Link window open, move your mouse cursor over the Chart Symbol field in the E\*Trade Pro Chart window and click and release the Shift key. (See the Red Box in the images below.)

Account: EJAMKA Account - 8876

Positions Balances Gains & Losses Transaction History

Symbol	News	Type	Quantity	Bid	Ask	Last Tr...	\$ Chg. ...	Cost B...	Mkt Val...	P&L To...	P&L U...
AAPL	<a href="#">news</a>	Stock	2	163.53	163.56	163.54	-4.2359	169.67	327.09	-8.47	-12.26
AMRN		Stock	150	3.78	3.79	3.785	-0.015	3.30	567.75	-2.25	-73.28
ARTX		Stock	500	0.29	0.292	0.29	+0.006	0.53	145.00	3.04	-119.95
BTSC		Stock	400	0.1025	0.104	0.10334	+0.009	0.36	41.34	-3.74	-104.64
ETP		Stock	200	19.62	19.63	19.625	-0.495	18.98	3,925.00	-99.00	128.05
HTGM		Stock	300	3.54	3.56	3.54	-0.19	3.93	1,062.00	-57.00	-115.95
SN		Stock	200	4.43	4.44	4.432	-0.528	5.66	886.40	-105.60	-246.55
Totals:									14,524...	-262.34	-459.78

Order Status

Account: All Accounts Status: Show All Symbol: Show All Views: Default

No records to display

Cancel Change Place Saved Order

Order Entry

Account: EJAMKA Account - 8876

Stock Options Conditional Total Trade Ticket

Symbol: CDXC Last Bid Ask Vol

Quantity: 1,000 Price Type: Market Price: 4.70 Term: Day Destination: AUTO AON: (if 300+)

Save Order Reserve: 100 Estimated Total: n/a

BUY SELL SHORT COVER

News

Top News All News Market Analysis RSS Feeds

Symbol(s): CDXC Keywords: All News Sources Saved Filter

**ChromaDex to Present at the 3rd Annual NAD+ Summit** [CDXC](#)

MARKETWATCH - 01/24/2018 - 9.0 days ago

DJ ChromaDex Files 8K - Director, Officer or Compensation Filing >CDXC

MARKETWATCH - 01/23/2018 - 10.0 days ago

ChromaDex Appoints Mark Friedman as General Counsel and Corporate

MARKETWATCH - 01/23/2018 - 10.0 days ago

"DJ Elysium Health's Challenge of ChromaDex Licensed Patent Denied b

MARKETWATCH - 01/22/2018 - 11.0 days ago

Elysium Health, Inc. Challenge of ChromaDex Licensed Patent Denied by

MARKETWATCH - 01/22/2018 - 11.0 days ago

DJ ChromaDex Corporation, Inst Holders, 4Q 2017 (CDXC) [CDXC](#)

MARKETWATCH - 01/19/2018 - 14.0 days ago

**MarketWatch**

ChromaDex to Present at the 3rd Annual NAD+ Summit [CDXC](#)

MARKETWATCH - 01/24/2018 - 9.0 days ago

ChromaDex to Present at the 3rd Annual NAD+ Summit

MARKETWATCH - 01/23/2018 - 10.0 days ago

Chief Scientific Advisor of ChromaDex, Dr. Charles Brenner, Headlines Presentation "NAD+: What It Is, How We Lose It, and How To Boost It"

RV/NE Calif., Jan. 24, 2018 (GLOBE NEWSWIRE) — ChromaDex Corp. (NASDAQ:CDXC), an integrated, science-based, nutraceutical company devoted to

Watch List

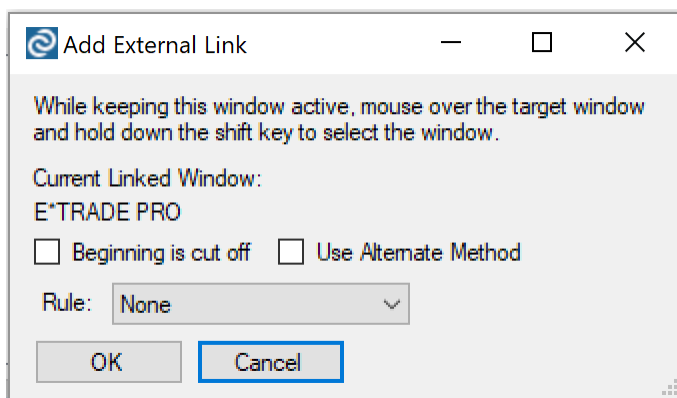
Symbol	Fu...	News	Last Trade	\$ Chg. Cl...	% Chg. Cl...	Bid	Ask	Tot Volume
\$DJ			25,844.05	-342.86	-1.31	0	0	188,018.1...
\$COMPX			7,311.52	-74.34	-1.01	0	0	219,544.2...
\$SPX			2,791.16	-30.82	-1.09	104.00	0.00	0
\$RUT			1,558,270.6	-21,581.4	-1.37	0	0	0
\$VIX			14.87	+1.40	+10.39	107.00	0.00	0
\$TNX			28.45	+0.72	+2.60	0	0	0

CDXC 4.70 -0.03 (-0.63%)

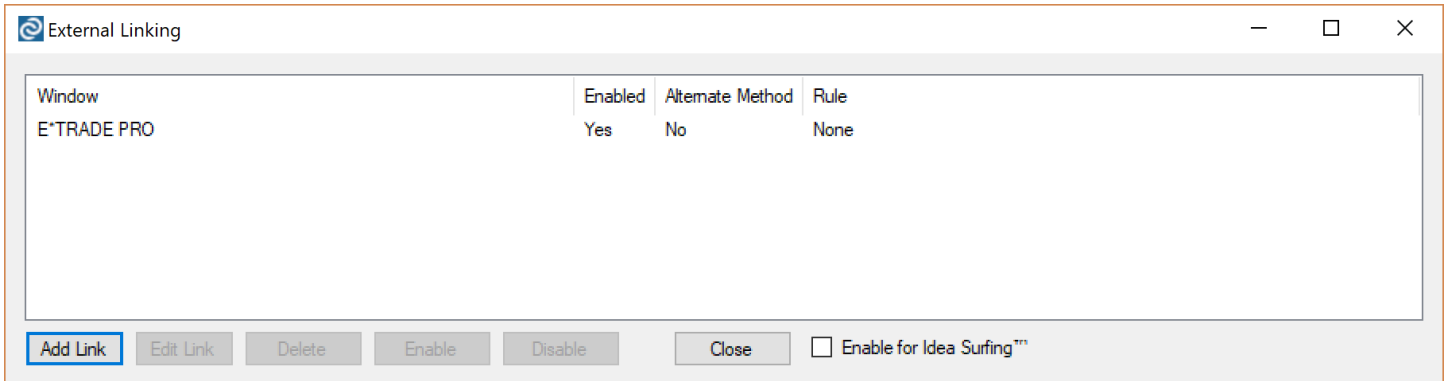
VOLUME



The Add External Link window should now show the current linked window as E\*Trade Pro. Do not check either of the "Beginning is cut off" or "Use Alternate Method" checkboxes, and the Rule should be set to "None". Select the OK button to accept this setting.

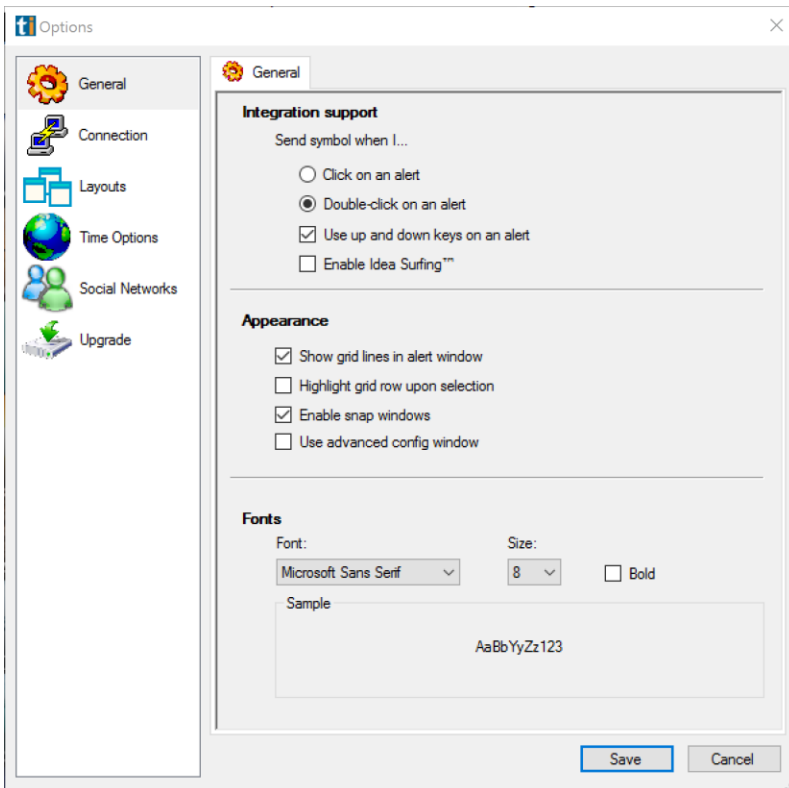


The External Linking window should list your E\*TRADE PRO link as enabled.



You may click the Close button to close the External Linking window and try the linking out by selecting a stock symbol and double-clicking it to see the symbol display in your charting application.

Additionally, it is helpful if you have gone into the Tools > Options > General menu and set the Integration support item to use Double-click on an alert, so that it is a positive action that is transferring the selected symbol. Click Save to retain this setting.



Now, when you double-click on a symbol in any of the windows of Trade Ideas, it should pass that value to the Chart window of E\*Trade Pro.

If the linking seems to “stop working”, please place your cursor in the Symbol field of the chart within E\*Trade Pro and click there to tell E\*Trade Pro “wake up and pay attention here”. This often happens after E\*Trade Pro has performed some other function of its own and it has lost “Focus” on the linking field. It should continue to accept links sent to it until there is another interrupt within E\*Trade Pro. (picture shows Symbol field selected)



If you notice in the above External Linking window and Options window pictures, there are checkboxes for Enable Idea Surfing™. If you check the one in the External Linking dialog, the Idea Surfing™ will also be passed on to your linked chart. If you un-check the one found in the Options dialog, it will disable the Surfing feature completely.

Another thing that can be important. When you Start up the programs, be sure that you launch E\*Trade Pro first, then Launch TI (the Target application needs to be there and ready to receive links). When you close the programs, Close TI first, then close E\*Trade Pro. If you check TI after re-opening and the linking does not exist, you will need to re-link the two programs (please be sure to restart the programs with Run as Administrator).