

Storm Door Handle Catalogue

2023 Edition

IDEAL
S E C U R I T Y

Table of Contents

Storm Door Hardware	3
Lever Handle	3
Pull Handle	6
Push Handle	8
Deadbolt	9
Inside Latch	10
Accessories	12

A third-generation family business, Ideal Security has its roots in storm door manufacturing.

Today, we are a hardware developer that creates products under three different brands:

IDEAL
SECURITY

Ideal Security

Door and window hardware
and home security products

IDEAL
BNZ

Ideal BNZ

High quality stackable storage
solutions for small and medium parts

IDEAL
PRO

Ideal PRO

Tools and hardware for
professional contractors



Our head office is based in Montreal, Quebec and our warehouse in Prescott, Ontario. As a team of 15 dedicated individuals, we work daily to uphold Ideal Security's outstanding reputation with our customers through trust, ownership, and collaboration.

Key Contacts

Liohn Sherer
President

Harry Jacobs
VP Sales & Marketing

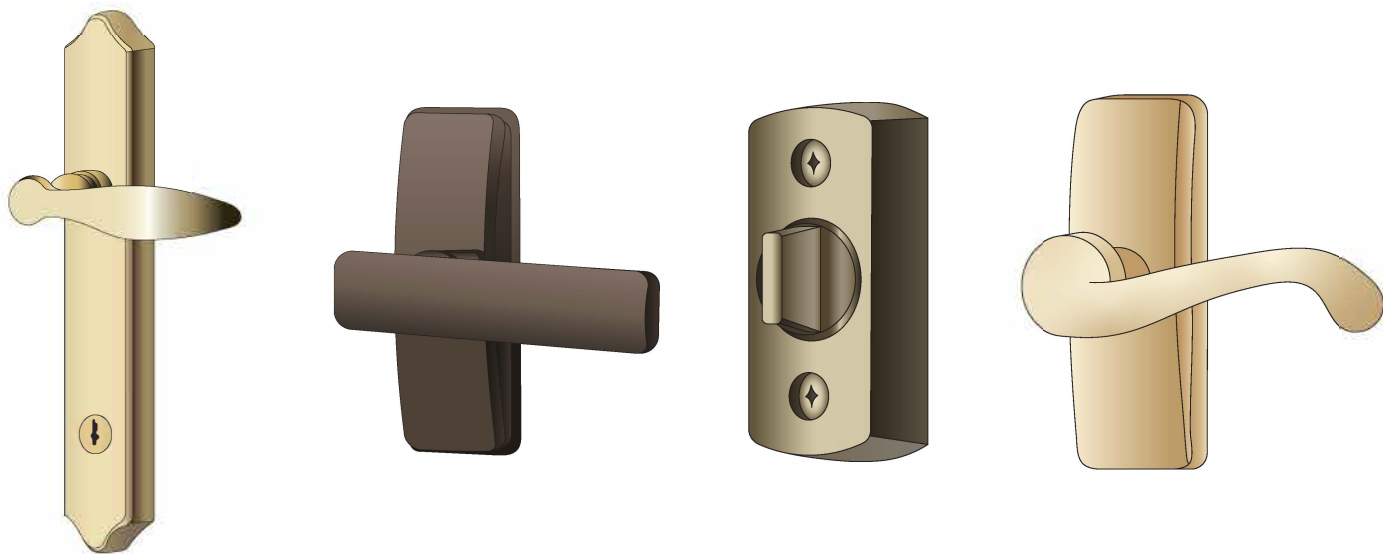
Lisa Griffiths
Director of Marketing

info@idealinc.com

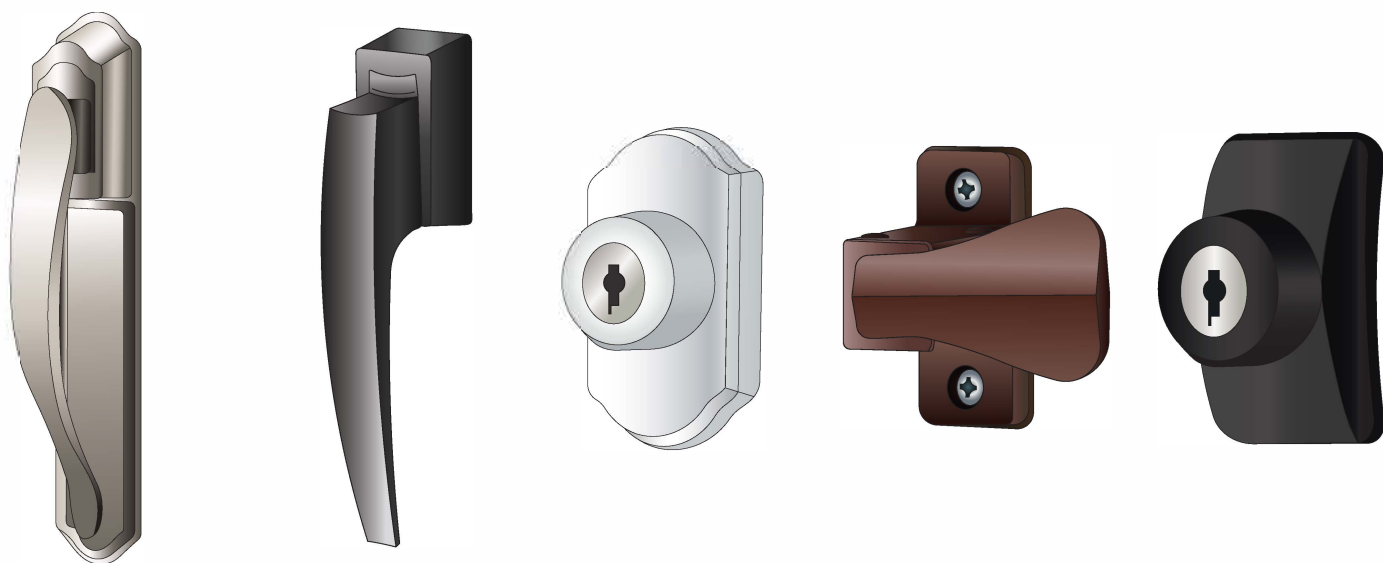
Storm Door Handle Colours

A Palette of Possibilities

Elevate the allure of your storm door with our diverse range of handle colors, meticulously designed to complement your existing door hardware or the unique color scheme of your home and surroundings. It's more than just a handle; it's a handshake with your home, an invitation to come on in. Dive into our 2024 catalogue to pick a colour that feels just right for your storm door.



 Bright Brass	 Oil Rubbed Bronze	 Antique Brass	 Satin Gold
--	---	---	--



 Satin Silver (Satin Chrome)	 Matte Black	 White	 Brown	 Black
--	---	---	---	---

AJ Lever Set

This surface mount storm door hardware set includes a sleek, modern lever handle and a non-locking interior latch. It is compatible with most pre-installed handles and is designed to match the styling used on many new prime entry doors. Lever handles are much easier to use than the basic push button handle that may have been pre-installed on your storm door. The interior latch features an easy opening push movement. This set includes everything needed for an easy installation and will fit doors from 1" to 2-1/8" thick.

SKU	COLOUR	PACKAGING
SKAJLSN	Satin Nickel	Retail
BAJLSN	Satin Nickel	Brown Box
SKALJW	White	Retail
SKAJLORB	Oil Rubbed Bronze	Retail
SKAJLBB	Bright Brass	Retail
BAJLBL	Black	Brown Box
BAJLAB	Antique Brass	Brown Box



AJ Lever Set with Keyed Deadbolt

This surface mount storm door hardware set includes a sleek, modern lever handle, non-locking interior latch and keyed deadbolt. It is compatible with most pre-installed handles and is designed to match the styling used on many new prime entry doors. Lever handles are much easier to use than the basic push button handle that may have been pre-installed on your storm door. The interior latch features an easy opening push movement. The matching keyed deadlock provides additional security, so you can keep your main door open while still feeling safe (this is not a high security lock, but a secondary level of security). This set includes everything needed for an easy installation and will fit doors from 1" to 2-1/8" thick.

SKU	COLOUR	PACKAGING
BAJGLKW	White	Brown Box
BAJGLKSN	Satin Nickel	Brown Box
BAJGLKBB	Bright Brass	Brown Box
BAJGLKMB	Matte Black	Brown Box



GL Lever Set

This surface mount storm door hardware set includes a stylish, curved lever handle and a non-locking interior latch. It is compatible with most pre-installed handles and is designed to match the styling used on many new prime entry doors. Lever handles are much easier to use than the basic push button handle that may have been pre-installed on your storm door. The non-locking interior latch features an easy opening push movement. This set includes everything needed for an easy installation and will fit doors from 1" to 2-1/8" thick.

SKU	COLOUR	PACKAGING
SKGLWSC	Silver	Retail
SKGLWBLUS	Black	Retail
SKGLWH	White	Retail



GL Lever Set with Locking Inside Latch

This surface mount storm door hardware set includes a stylish, curved lever handle and a locking interior latch. It is compatible with most pre-installed handles and is designed to match the styling used on many new prime entry doors. Lever handles are much easier to use than the basic push button handle that may have been pre-installed on your storm door. The locking interior latch features an easy opening push movement and adds a layer of security to your storm door. This set includes everything needed for an easy installation and will fit doors from 1" to 2-1/8" thick.

SKU	COLOUR	PACKAGING
BKGLWV2SN	Silver	Brown Box
BKGLWV2BB	Bright Brass	Brown Box
BKGLWV2ORB	Oil Rubbed Bronze	Brown Box
BKGLWV2W	White	Brown Box
BKGLWV2MB	Matte Black	Brown Box



GL Lever Set with Deadbolt Lock

This surface mount storm door hardware set includes a stylish, curved lever handle, non-locking interior latch and non-keyed deadbolt lock. It is compatible with most pre-installed handles and is designed to match the styling used on many new prime entry doors. Lever handles are much easier to use than the basic push button handle that may have been pre-installed on your storm door. The interior latch features an easy opening push movement. The matching deadlock provides additional security, so you can keep your main door open while still feeling safe. This set includes everything needed for an easy installation and will fit doors from 1" to 2-1/8" thick.

SKU	COLOUR	PACKAGING
HK357DB05SC	Silver	Retail
HK357DB05BL	Black	Retail
HK357DB05ORB	Oil Rubbed Bronze	Retail
HK357DB05W	White	Retail
HK357DB05AB	Antique Brass	Retail
HK357DB05MB	Matte Black	Brown Box



GL Lever Set with Keyed Deadbolt

This surface mount storm door hardware set includes a stylish, curved lever handle, non-locking interior latch and keyed deadbolt. It is compatible with most pre-installed handles and is designed to match the styling used on many new prime entry doors. Lever handles are much easier to use than the basic push button handle that may have been pre-installed on your storm door. The interior latch features an easy opening push movement. The matching keyed deadlock provides additional security, so you can keep your main door open while still feeling safe (this is not a high security lock, but a secondary level of security). This set includes everything needed for an easy installation and will fit doors from 1" to 2-1/8" thick.

SKU	COLOUR	PACKAGING
HK01-I-099	Silver	Brown Box
HK01-I-061	Black	Brown Box
HK01-I-022	Bright Brass	Brown Box
HK01-I-ORB	Oil Rubbed Bronze	Brown Box
HK01-I-073	White	Brown Box
HK01-I-AB	Antique Brass	Brown Box
HK01-I-MB	Matte Black	Brown Box
HK01-I-SG	Satin Gold	Brown Box



ML Lever Set - 4 Post Version

This surface mount deluxe storm door hardware set with four posts includes an elegant lever handle, an interior latch, and a keyed deadbolt. It is compatible with most pre-installed handles and complements a wide range of décor styles. The Model 1216 handle fits door thicknesses from 1" to 1 1/2", but this can be extended to 2 1/8" with the SP1216V1ZP screw pack. The elegant and easy-to-operate handle replaces the basic push-button handle that may already be on your screen door. The interior latch features an easy opening push movement. The long-lasting finish will provide an added touch of class to any storm door.

SKU	COLOUR	PACKAGING
BK1216W	White	Brown Box
BK1216SC	Satin Chrome	Brown Box
BK1216ORB	Oil Rubbed Bronze	Brown Box
BK1216BB	Bright Brass	Brown Box
BK1216AB	Antique Brass	Brown Box
BK1216MB	Matte Black	Brown Box
BK1216BL	Black	Brown Box



ML Lever Set - 2 Post Version

This surface mount deluxe storm door hardware set with two posts includes an elegant lever handle, an interior latch, and a keyed deadbolt. It is compatible with most pre-installed handles and complements a wide range of décor styles. The Model 1216 handle fits door thicknesses from 1" to 2 1/8". The elegant and easy-to-operate handle replaces the basic push-button handle that may already be on your screen door. The interior latch features an easy opening push movement. The long-lasting finish will provide an added touch of class to any storm door.

SKU	COLOUR	PACKAGING
BK1215W	White	Brown Box
SK1215W	White	Retail
BK1215ORB	Oil Rubbed Bronze	Brown Box
BK1215BB	Bright Brass	Brown Box
SK1215BB	Bright Brass	Retail
BK1215MB	Matte Black	Brown Box
BK1215BL	Black	Brown Box
SK1215BL	Black	Retail
BK1215SC	Satin Chrome	Brown Box
SK1215SC	Satin Chrome	Retail



CS Pull Handle Set

The CS Pull Handle Set presents the easiest and most natural way to open a screen or storm door. Simply pull the surface mount handle and the door opens. This handle set is ideal for 1" to 2-1/8" door thicknesses. The package includes an inside latch and all installation accessories.

SKU	COLOUR	PACKAGING
SKCSBL	Black	Retail
SKCSW	White	Retail



CS Pull Handle Set With Inside Touch Bar

The Model 4390 CS Pull Handle Set with Push Bar is a complete set of an outside pull handle and an interior push exit bar. This model is installed on out swinging storm or screen doors for convenience whether you are going out or coming in. The handle installs in standard 1-3/4" screw hole spacing. All screws, strike and brackets are included for a complete installation. 2 new screw holes will be required on the inside of the door, opposite the inside handle for the supporting bracket. The bar can be cut for various door widths. The inside latch on the push bar includes a night latch feature to lock from the inside only. If your hands are full, the touch bar is a great feature to get out of your house.

SKU	COLOUR	PACKAGING
BK4390BL	Black	Brown Box
SK4390W	White	Retail



DX Pull Handle Latch Set With Back Plate

The DX surface mount storm door pull handle with backplate and locking inside latch set complements a wide range of decor styles. This elegant and easy-to-operate handle can replace a push-button handle that may be on your screen door. The interior latch features an easy-open push movement and features a thumb style lock or night latch which allows the storm door to be locked from the inside. This handle will replace all storm and screen door handles that have 1-3/4" distance between the screw posts. The set will fit storm doors or screen doors 1" to 2-1/8" thick.

SKU	COLOUR	PACKAGING
BKDXW	White	Brown Box
SKDXW	White	Retail
BKDXSS	Satin Silver	Brown Box
SKDXSS	Satin Silver	Retail
BKDXORB	Oil Rubbed Bronze	Brown Box
SKDXORB	Oil Rubbed Bronze	Retail
BKDXBB	Bright Brass	Brown Box
SKDXBB	Bright Brass	Retail
BKDXMB	Matte Black	Brown Box
SKDXMB	Matte Black	Retail
BKDXBL	Black	Brown Box
SKDXBL	Black	Retail
BKDXB	Brown	Brown Box
SKDXB	Brown	Retail



DX Pull Handle Set With Keyed Deadbolt

The DX surface mount storm door pull handle with backplate, locking inside latch, and keyed deadbolt set complements a wide range of decor styles. This elegant and easy-to-operate handle can replace a push-button handle that may be on your screen door. The interior latch features an easy-open push movement and features a thumb style lock or night latch which allows the storm door to be locked from the inside. This handle will replace all storm and screen door handles that have 1-3/4" distance between the screw posts. The set will fit storm doors or screen doors 1" to 2-1/8" thick.

SKU	COLOUR	PACKAGING
LSDXCR2267SN	Satin Nickel	Brown Box
LSDXCR2267ORB	Oil Rubbed Bronze	Brown Box
LSDXCR2267MB	Matte Black	Brown Box
LSDXCR2267BL	Black	Brown Box



VP Pull Handle Set

Taking inspiration from the Classic Series and giving it a modern, aesthetic uplift, the surface mount VP Series with locking inside latch offers handle styles in the push button or pull variants without compromise in their slim, sleek design or simplified installation process. The VP series is designed for doors with a thickness of 1" to 2 1/8". When your out-swinging storm or screen doors need that bit of modern flourish without a complete breakaway from traditional design, the VP Series is the way to go.

SKU	COLOUR	PACKAGING
SK1994W	White	Retail
SK1994BL	Black	Retail
SK1994B	Brown	Retail



Classic Push Button Handle Set

The surface mount Classic Push Button Handle Set is designed for all out-swinging doors 1" to 2" thick, with the standard screw distance of 1-3/4" center to center. Inside latch and solid strike included. Converts to locking unit with Ideal's SK8.

SKU	COLOUR	PACKAGING
SK910B	Brown	Retail
SK910W	White	Retail
SK11BL	Black	Retail
SK11	Silver	Retail



Classic Push Button Handle Set with Key Lock

The surface mount Classic Push Button Handle Set, now with an integrated key lock, is designed for all out-swinging doors 1" to 2" thick, with the standard screw distance of 1-3/4" center to center. Inside latch and solid strike included.

SKU	COLOUR	PACKAGING
SK12	White	Retail



VP Push Handle Set

Taking inspiration from the Classic Series and giving it a modern, aesthetic uplift, the surface mount VP Series with locking inside latch offers handle styles in the push button or pull variants without compromise in their slim, sleek design or simplified installation process. The VP series is designed for doors with a thickness of 1" to 2 1/8". When your out-swinging storm or screen doors need that bit of modern flourish without a complete breakaway from traditional design, the VP Series is the way to go.

SKU	COLOUR	FEATURES	PACKAGING
BK312BL	Black	Keyed Push Button	Brown Box
BK311BL	Black	Non-Keyed Push Button	Brown Box



703 Keyed Deadbolt

Offering a stylish curved aesthetic to your storm or screen door while providing a layer of security, the 703 Keyed Deadbolt is the perfect addition to a storm or screen door handle. Installed with three 5/16" holes, it takes only a matter of moments to outfit your door with this element of added flourish. The Model 703 deadbolt comes with two keys.

SKU	COLOUR	PACKAGING
SK703SS	Silver	Retail
SK703BL	Black	Retail
SK703BB	Bright Brass	Retail
SK703ORB	Oil Rubbed Bronze	Retail
SK703W	White	Retail



GLK Keyed Deadbolt

Featuring a modern and elegant aesthetic to your storm or screen door while providing a layer of security, the GLK Keyed Deadbolt is the perfect addition to a storm or screen door handle, and is the same style of keyed deadbolt that comes with the HK01-I Handle Set. Installed with three 5/16" holes, it takes only a matter of moments to outfit your door with this element of added flourish. The Model GLK deadbolt comes with 2 keys.

SKU	COLOUR	PACKAGING
BKGLKSC	Silver	Brown Box
SKGLKSC	Silver	Retail
BKGLKBL	Black	Brown Box
SKGLKBL	Black	Retail
BKGLKBB	Bright Brass	Brown Box
BKGLKW	White	Brown Box
SKGLKW	White	Retail
BKGLKAB	Antique Brass	Brown Box
BKGLKORB	Oil Rubbed Bronze	Brown Box
BKGLKMB	Matte Black	Brown Box



SK5 Storm Door Deadbolt

This classic storm door deadbolt is a subtle, sleek solution to the simple problem of adding a layer of security to your storm and screen door. Featuring an interior-only lock, the SK5 Storm Door Deadbolt offers the safety of a lock without the need to install external hardware on a storm or screen door. Installed with only the drilling of two quick holes with a spacing of 1 3/4" and a strike, the SK5 Storm Door Deadbolt is for those looking for function over form, without sacrificing either.

SKU	COLOUR	PACKAGING
SK5SSP	Silver	Retail
SK5SBL	Black	Retail
SK5SB	Brown	Retail
SK5SW	White	Retail



357 Inside Latch With Strike

Stylishly compatible with our storm and screen door handles, the 357 Inside Latch fulfills form and function when it comes to replacing other inside handles and latches. Using the standard 1-3/4" hole spacing, this Inside Latch is an ideal, compatible replacement. The 357 best pairs with our GL and ML lever handles, our DX pull handles, and our offerings from the Classic and VP series. The package includes a strike. Note that this latch has no locking mechanism.

SKU	COLOUR	PACKAGING
SK357	Silver	Retail
SK357BL	Black	Retail
SK357W	White	Retail



358 Inside Latch

Stylishly compatible with our storm and screen door handles, the 358 Inside Latch fulfills form and function when it comes to replacing other inside handles and latches. Using the standard 1-3/4" hole spacing, this Inside Latch is an ideal, compatible replacement. The 358 best pairs with our lever handles. Note that this latch has no locking mechanism.

SKU	COLOUR	PACKAGING
SK358	White	Retail



NA87 Inside Latch

The NA87 Inside Latch is a unique inside latch that uses a spring-loaded strike, ideal for those looking for a change from the standard replacement latch. Suitable for storm doors that feature push-button or pull handles with 1-3/4" screw holes, this twist on inside latches comes together in mere moments.

SKU	COLOUR	PACKAGING
NA87AM	White	Bag



WC Inside Latch

The locking WC Inside Latch is compatible with all pull and push-button handles, and can be used with a solid strike (not included). With a convenient and easy-to-use locking mechanism, the WC Inside Latch helps keep your storm door secured. The WC latch has a hole spacing of 1 3/4".

SKU	COLOUR	PACKAGING
WCAM	White	Bag
WCMG	Gold	Bag
WCAC	Black	Bag



ZD Inside Latch

The ZD Inside Latch with a locking mechanism is the go-to choice when looking for a quick and reliable replacement latch. Tailored for storm doors with push-button and pull handles, this inside latch can be installed in a matter of moments - solid strike included.

SKU	COLOUR	PACKAGING
SK10	Silver	Retail
SK10BL	Black	Retail
SK10B	Brown	Retail
SK10W	White	Retail



Spring-Loaded Strike for Fixed Latches

This spring-loaded strike is used with storm door latches that have a solid nose bolt.

SKU	COLOUR	PACKAGING
SK1	Silver	Retail



Solid Nylon Strike for Storm Door Latches

This is a solid strike for latches that use spring-loaded nose bolts.

SKU	COLOUR	PACKAGING
SK2	White	Retail



Push-Button Key Lock

Compatible with the 11 and 910 handles, this key lock adds a layer of security to your standard push-button handle, transforming the button into a key-lock.

SKU	COLOUR	PACKAGING
SK8	Silver	Retail



E5 Spindle with Spring

This replacement spindle is compatible with the following models: 11, 12, 910, 940, 311, 312.

SKU	PACKAGING
E5	Bag



Flat Steel Spindle

This replacement spindle is compatible with the following models: 1215, 1216, HK-01, and GLK.

SKU	PACKAGING
1200	Bulk



Replacement Spindle & Spring

This replacement spindle & spring is ideal for storm and screen doors up to 2" thick, and fits into the 11, 12, 311, and 312 handles.

SKU	PACKAGING
SK18	Retail



Round JD Spindle

This replacement spindle is compatible with all Ideal Security Pull Handles, and is available in multiple lengths.

SKU	PACKAGING
JD	Bulk



Square Combo Spindle

This replacement spindle is compatible with the following models: AJL, GLW, HK357DB05, HK01-I, GLWv2, 1215, 1216. Various lengths are available.

SKU	PACKAGING
SSD-LH04	Bulk



Handle Set and Door Thickness

Series	Model	Door Thickness
AJ Lever Set	AJL	1" - 2 1/8"
	AJGLK	1" - 2 1/8"
Classic Push-Button Set	11	1" - 2"
	12	1" - 2"
CS Pull Handle Set	CS	1" - 2 1/8"
	4390	1" - 2 1/8"
DX Pull Handle Set	LSDXCR2267	1" - 2 1/8"
	940	1" - 2"
	DX	1" - 2 1/8"
EL Lever Set	EL15	1" - 2 1/8"
GL Lever Set	GLW	1" - 2 1/8"
	GLWV2	1" - 2 1/8"
	HK01-I	1" - 2 1/8"
	HK357DB05	1" - 2 1/8"
HP Pull Handle Set	HP	7/8" - 2 1/8"
In-Swinging Handle Set	IS	1" - 1 1/2"
	ISB1	7/8" - 1 3/8"
LE Pull Handle Set	LEBBUS	1" - 1 1/4"
ML Lever Set	1215	1" - 2 1/8"
	1216	1" - 1 1/2" up to 2 1/8" with SP1216V1ZP
VP Push-Button Set	311	1" - 2"
	312	1" - 2"
	1994	1" - 2 1/8"

Handle and Latch Mounting Screw Guide

Product Type	Model	Handle and Latch Mounting Screw Size	Handle and Latch Screw Length	Deadbolt Model	Deadbolt Mounting Screw Size	Deadbolt Screw Length	Inside Latch	Latch Shim	Latch Strike	Strike Shim
Lever	HK357DB05	#6-32	Door Thickness + ¼"	DB05 integrated	Self-Drilling Screw #6 x 5 ⅛"		357	SS45	336AC (SK2)	S-58
Lever	GLW	#6-32	Door Thickness + ¼"				357	SS45	336AC (SK2)	S-58
Lever	HK01-I	#6-32	Door Thickness	GLK	#6-32	Door Thickness + ¼"	357	SS45	336AC (SK2)	S-58
Lever	AJL	#6-32	Door Thickness + ¼"				357	SS45	336AC (SK2)	S-58
Lever	ISB1	#6-32	Door Thickness				357	SS45	336AC (SK2)	S-58
Lever	IS	#6-32	Door Thickness				357	SS45	336AC (SK2)	S-58
Lever	1215	#6-32	Door Thickness + ¼"	GLK integrated	#6-32	Door Thickness + ¼"	357	SS45	336AC (SK2)	S-58
Lever	1216	#6-32	Door Thickness + ¼"	GLK integrated	#6-32	Door Thickness + ¼"	357	SS45	336AC (SK2)	S-58
Lever	EL15	#6-32	Door Thickness + ¼"	GLK integrated	#6-32	Door Thickness + ¼"	357	SS45	336AC (SK2)	S-58
Lever	GLWV2	#8-32	Door Thickness + ¼"				WC	SS12	336AC (SK2)	S-58
Pull Handle	LSDXCR2267	#8-32	Door Thickness + ¼"	703	#8-32	Door Thickness + ½"	WC	SS12	336AC (SK2)	S-58
Pull Handle	CS	#8-32	Door Thickness				WC	SS12	336AC (SK2)	S-58
Pull Handle	HP	#8-32	Door Thickness				WC	SS12	336AC (SK2)	S-58
Pull Handle	4390	#8-32	Door Thickness + ¼"				WC	SS12	336AC (SK2)	S-58
Pull Handle	DX	#8-32	Door Thickness + ¼"				WC	SS12	336AC (SK2)	S-58
Push Button	11	#6-32	Door Thickness				ZD	1665	336AC (SK2)	S-58
Push Button	12	#6-32	Door Thickness				ZD	1665	336AC (SK2)	S-58
Push Button	311	#8-32	Door Thickness				WC	SS12	336AC (SK2)	S-58
Push Button	312	#8-32	Door Thickness				WC	SS12	336AC (SK2)	S-58

IDEAL
S E C U R I T Y