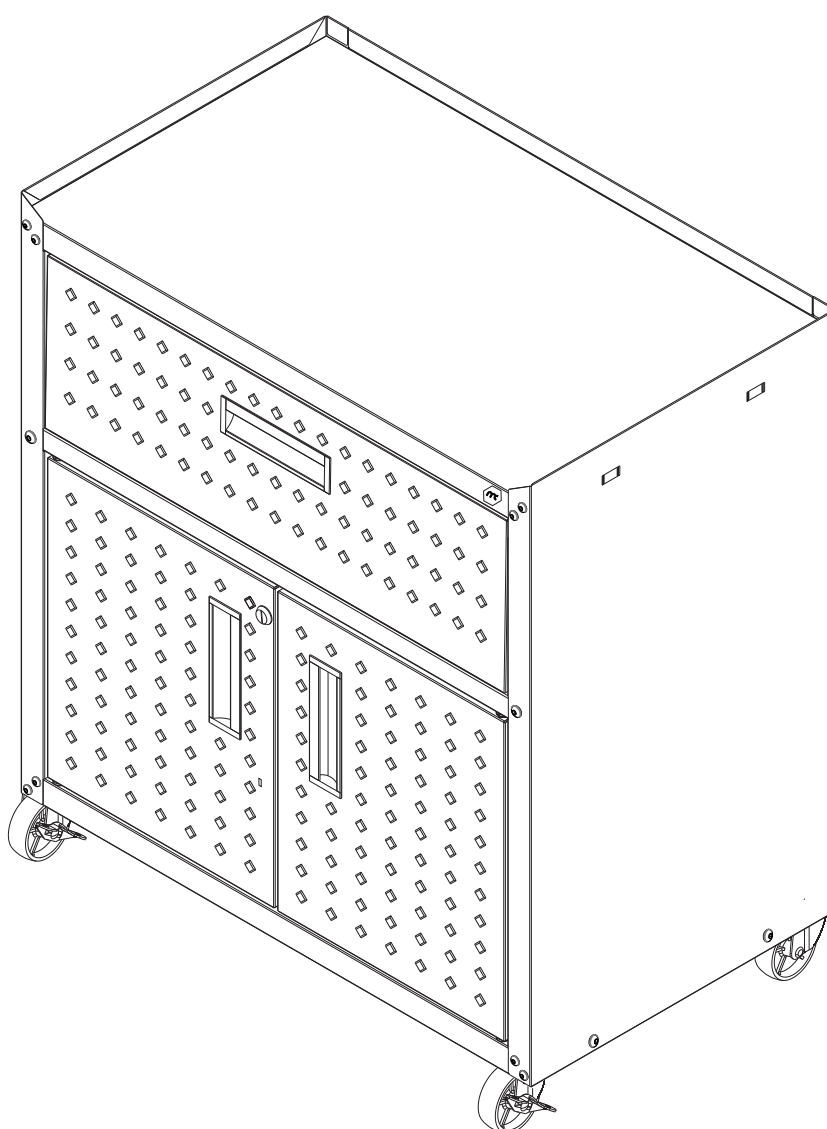




Assembly Guide

Model: 2GMCC

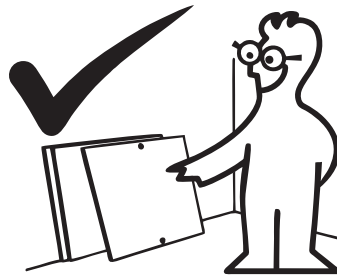
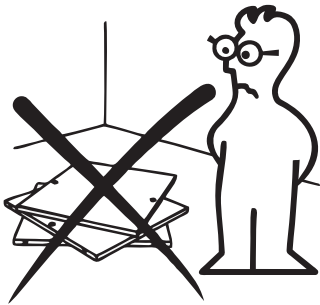
Fortress 31.5" Mobile Garage Cabinet With Drawer And Shelves



Stuck? Questions? We are here to help.

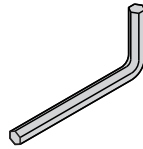
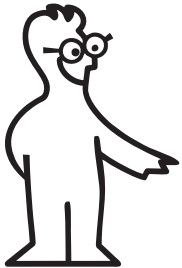
1-888-230-2225

help@manhattancomfort.com

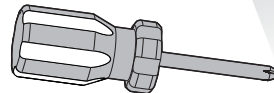


In order to ease the assembly,
you should separate and identify the parts first

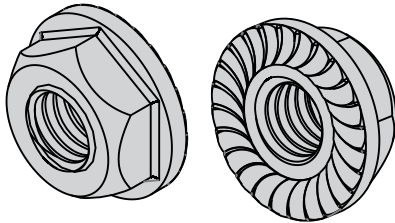
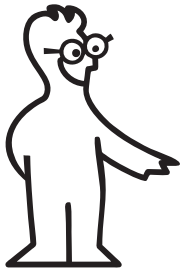
Necessary hardware for the assembly



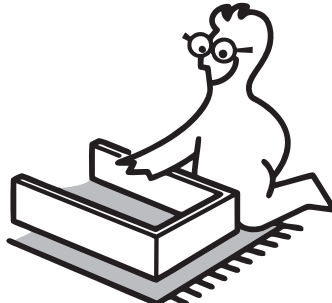
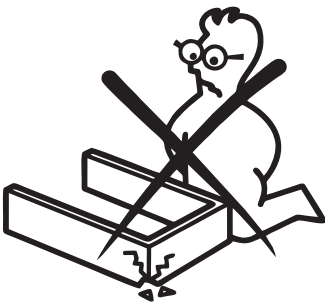
* Included in the kit



* Not included in the kit



Locking nut, no key tightening required.



Do not place the parts directly onto the floor.
Use a cardboard sheet or a mat to place the
parts, during the separation and assembly.



Stuck? Questions? We are here to help.
1-888-230-2225
help@manhattancomfort.com

IMPORTANT

In order to avoid severe or even fatal injuries, follow the instructions carefully.

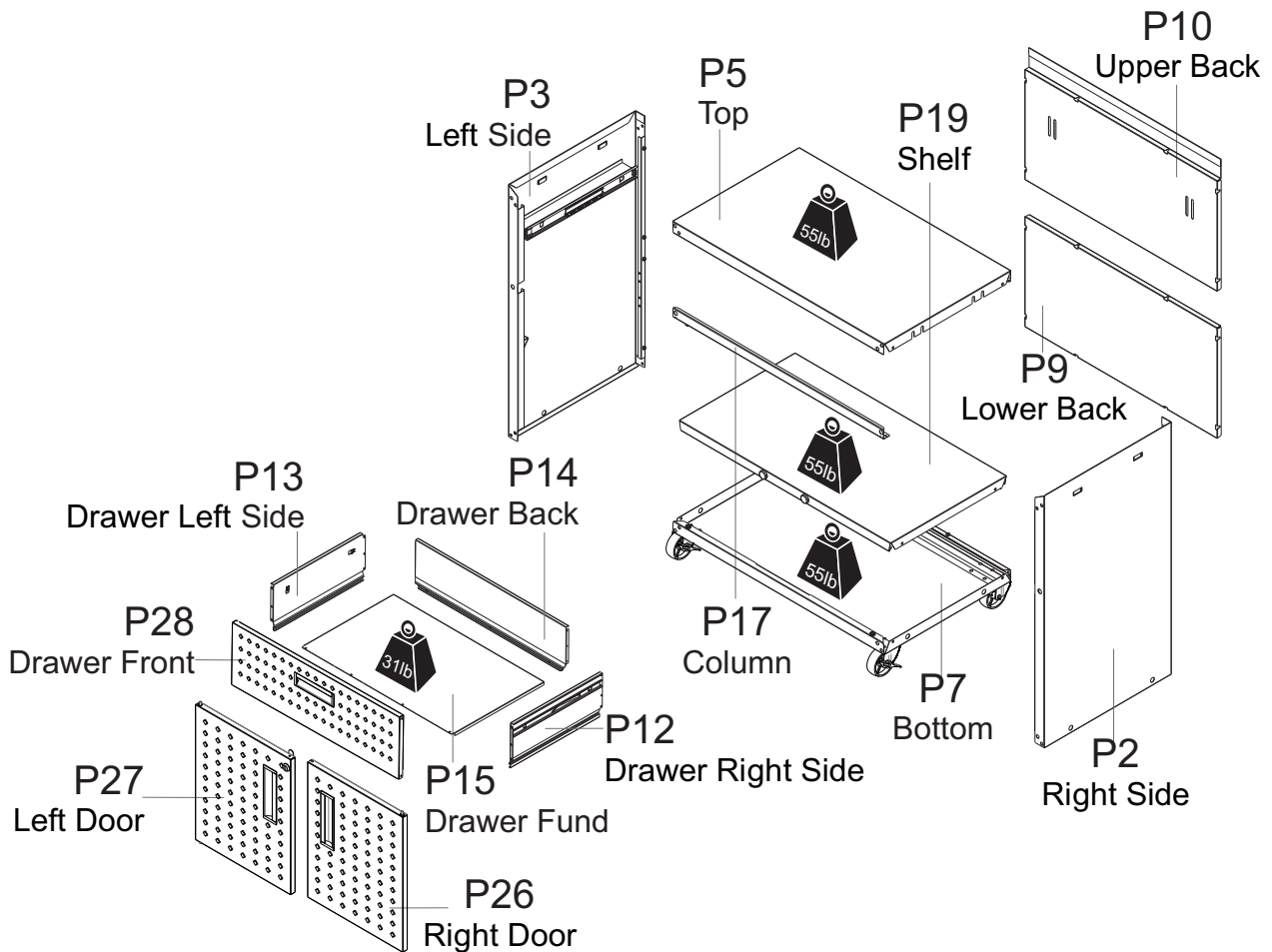
Fortress 31.5" Mobile Garage Cabinet With Drawer And Shelves

IDENTIFY THE COLOR OF YOUR CABINET

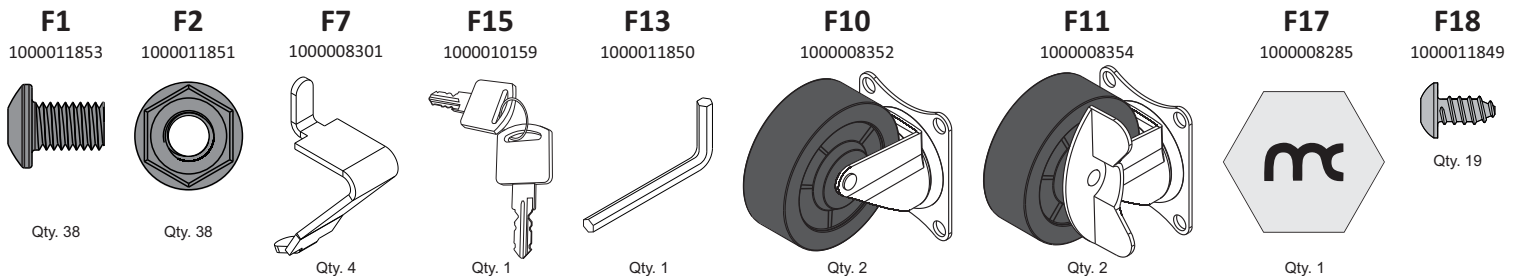
N°	DESCRIPTION	GREY	CHARCOAL	MATTE WHITE	MATERIAL MATERIAL	QUANTITY	
P2	RIGHT SIDE	3000007327	3000011876	3000011962	STEEL		UN
P3	LEFT SIDE	3000007341	3000011875	3000011961	STEEL	1	UN
P5	TOP	3000007369	3000011874	3000011960	STEEL	1	UN
P7	BOTTOM	3000008643	3000011848	3000011935	STEEL	1	UN
P9	LOWER BACK	3000007266	3000011842	3000011930	STEEL	1	UN
P10	UPPER BACK	3000007312	3000011846	3000011933	STEEL	1	UN
P12	DRAWER RIGHT SIDE	3000007360	3000011856	3000011943	STEEL	1	UN
P13	DRAWER LEFT SIDE	3000007337	3000011858	3000011945	STEEL	1	UN
P14	DRAWER BACK	3000007365	3000011867	3000011953	STEEL	1	UN
P15	DRAWER FUND	3000007334	3000011869	3000011955	STEEL	1	UN
P17	COLUMN	3000007344	3000011873	3000011959	STEEL	1	UN
P19	SHELF	3000007311	3000011847	3000011934	STEEL	1	UN
P26	RIGHT DOOR	3000007351	3000011862	3000011948	STEEL	1	UN
P27	LEFT DOOR	3000007348	3000011864	3000011949	STEEL	1	UN
P28	DRAWER FRONT	3000007355	3000011861	3000011947	STEEL	1	UN



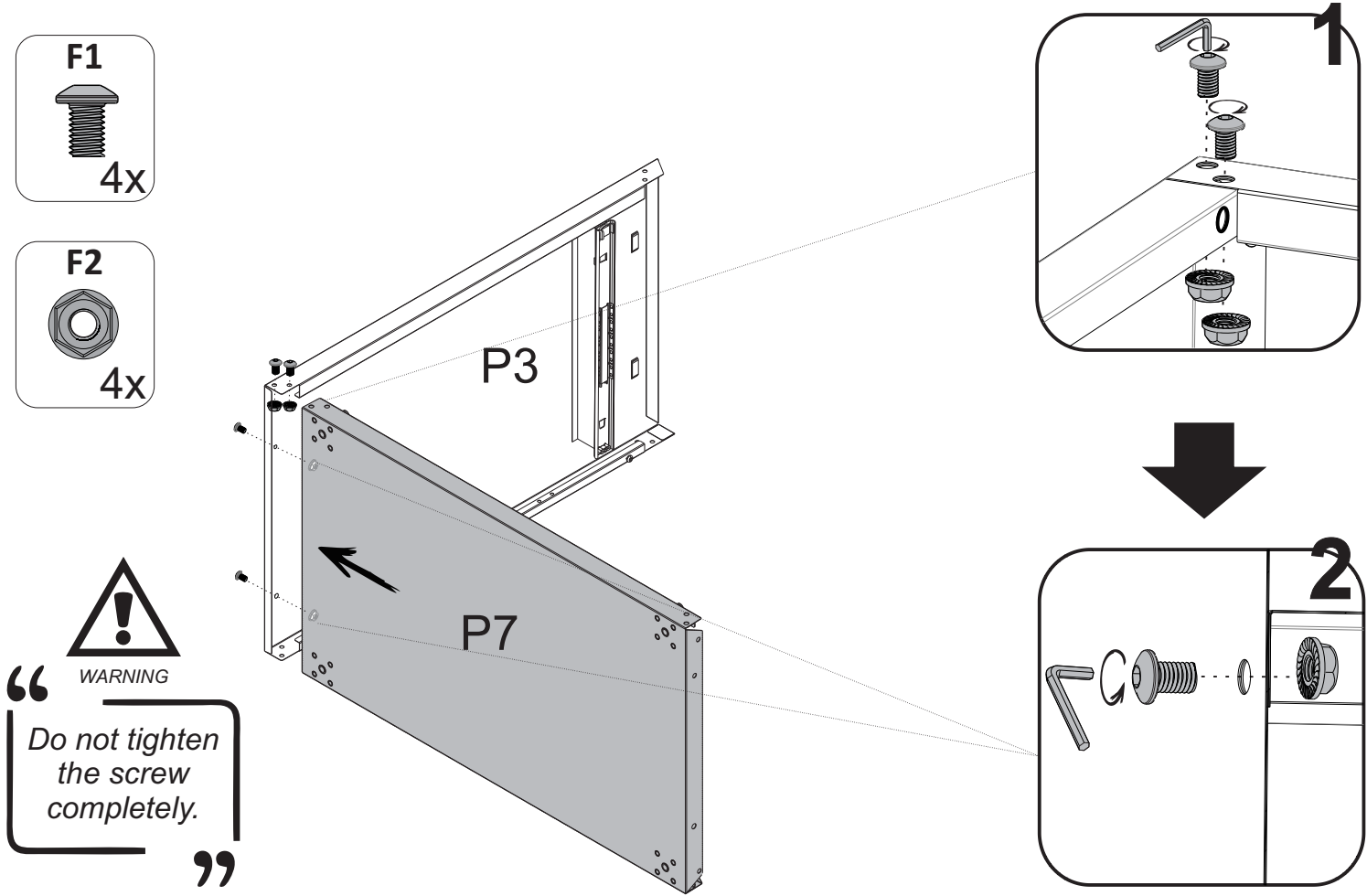
WARNING



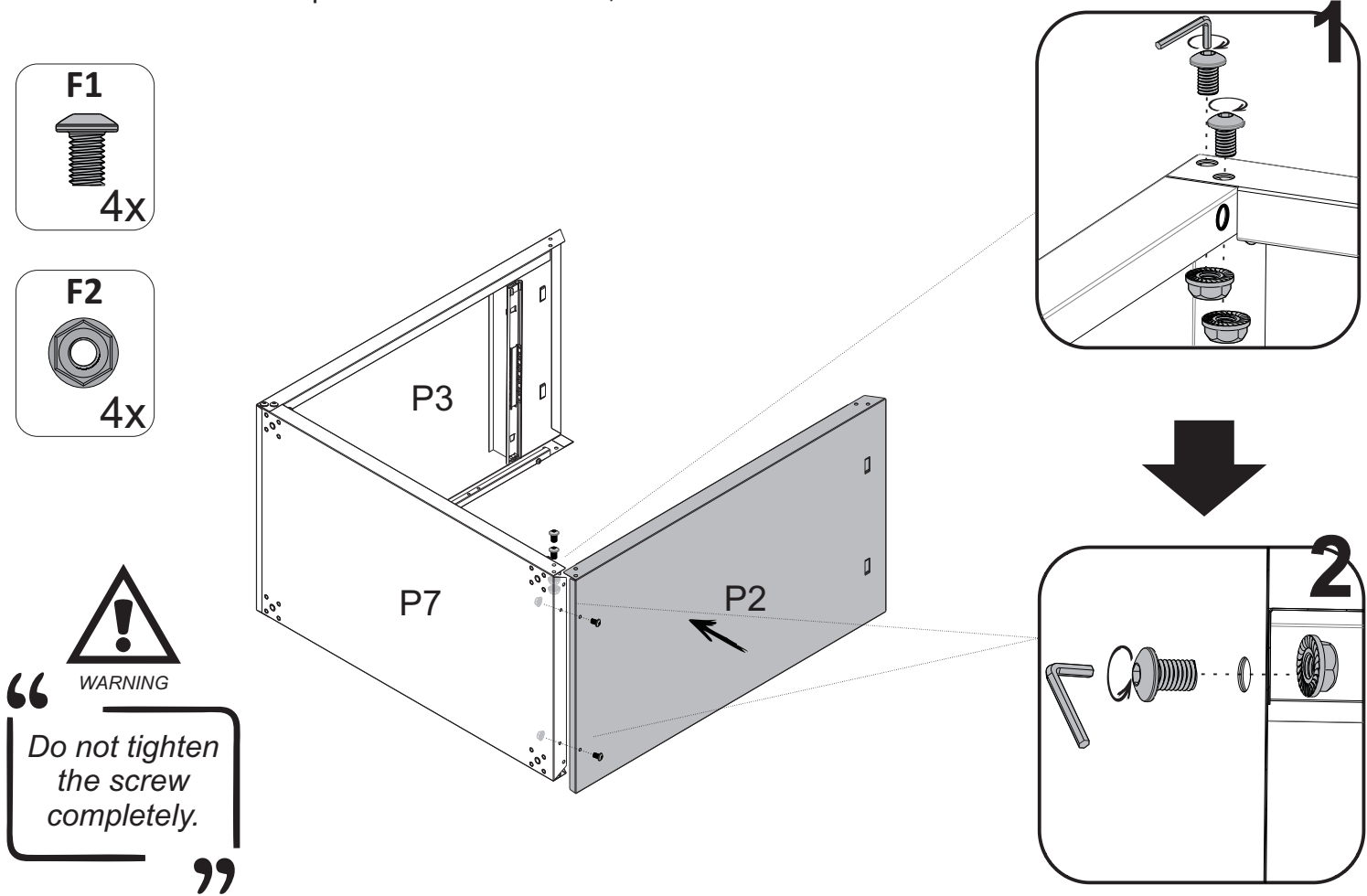
Hardware list



STEP 1 1 - Fit part **P7** inside part **P3**
2 - Fit both parts in the frontal side, with **F1** and **F2**.

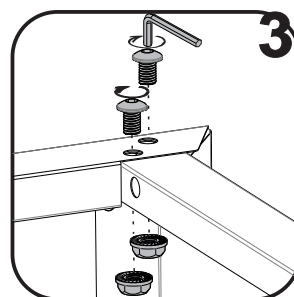
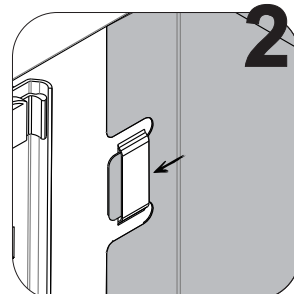
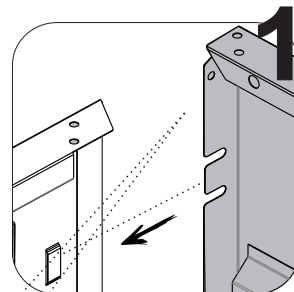
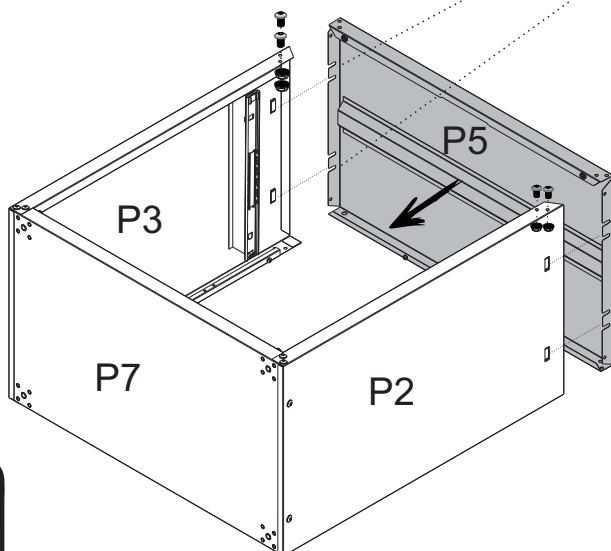
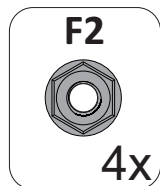
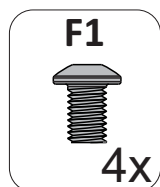


STEP 2 1 - Fit part **P2** inside part **P7**
2 - Fit both parts in the frontal side, with **F1** and **F2**.



STEP 3

- 1 - Fit part **P5** between part **P2** and **P3**
- 2 - Check that all 4 tabs have been fitted
- 3 - Fit part **P5** to parts **P2** and **P3**, at the frontal side, with **F1** and **F2**.

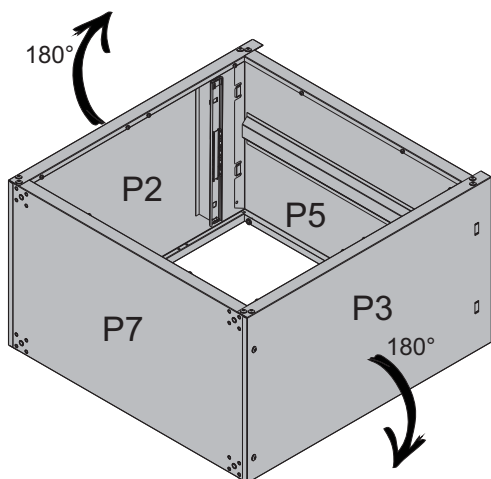
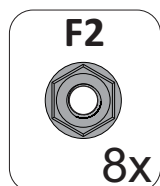
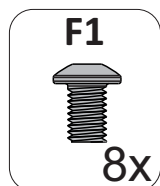


WARNING

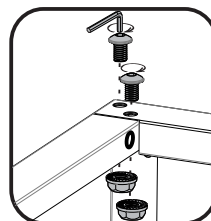
“Do not tighten the screw completely.”

STEP 4

- 1 - Turn the cabinet with the back side upwards.



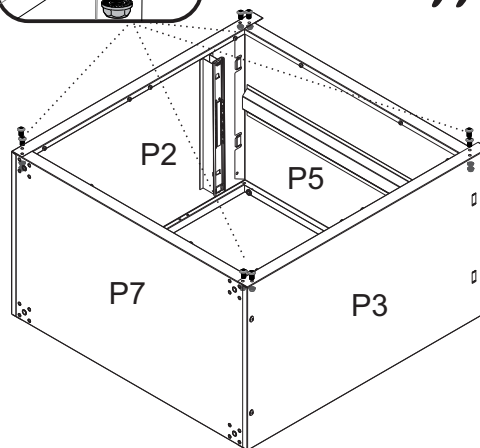
- 2 - Fit parts **P2** and **P3** to parts **P5** and **P7** with **F1** and **F2**.



“Do not tighten the screw completely.”



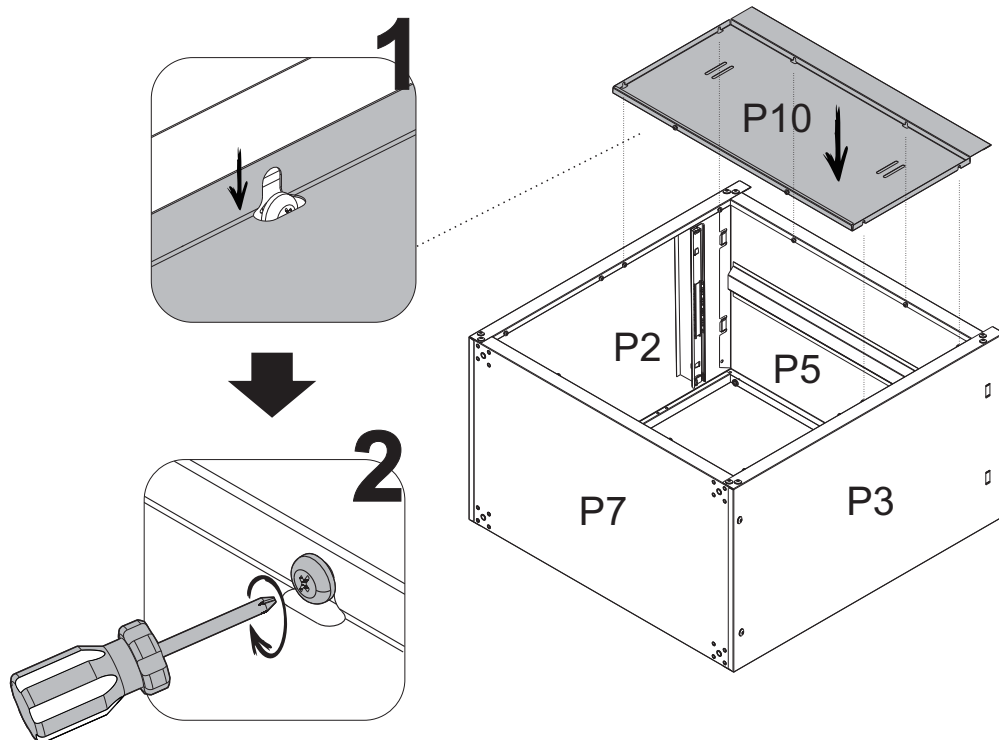
WARNING



WARNING

“Check that all parts are correctly supported to ensure product alignment.”

- STEP 5**
- 1 - Fit part **P10** into parts **P2**, **P3** and **P5**
Check that all fits are supported over the bolts.
 - 2 - After fitting the parts, screw the bolts until locked.

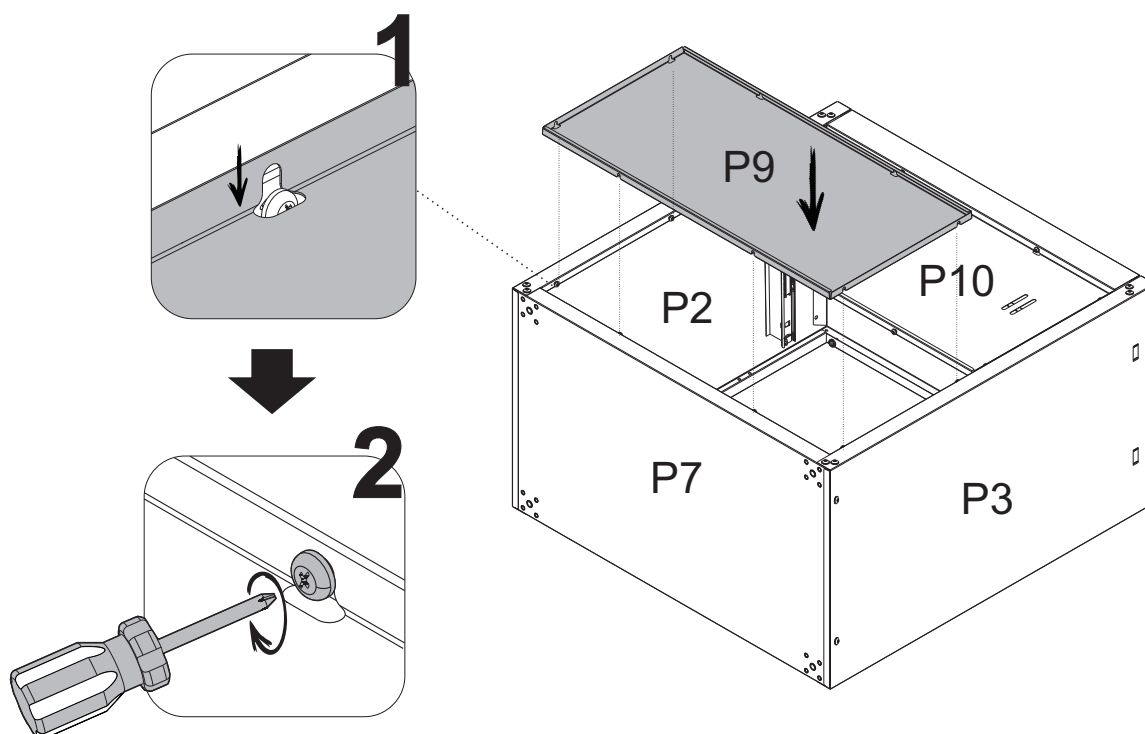


WARNING

“ Position part P10 on the P5 side for mounting the cabinet. ”

“ Do not tighten the screw completely. ”

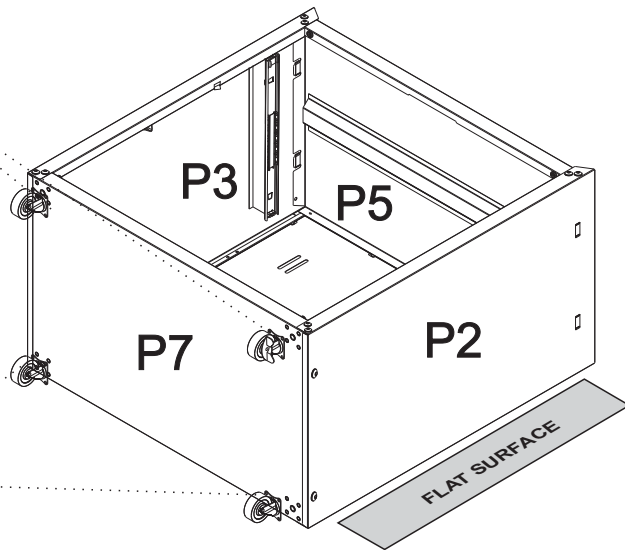
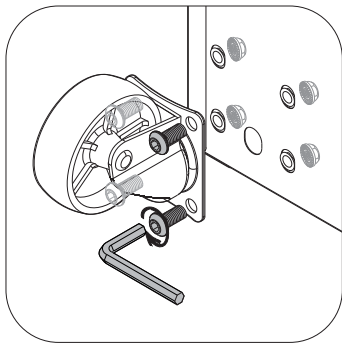
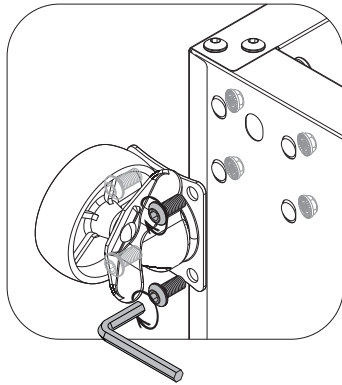
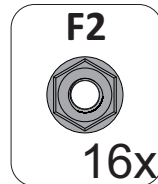
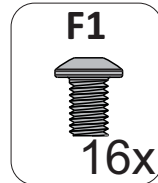
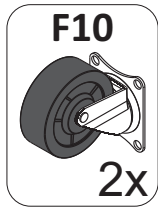
-
- STEP 6**
- 1 - Fit part **P9** into parts **P2**, **P3** and **P7**
Check that all fits are supported over the bolts
 - 2 - After fitting the parts, screw the bolts until locked



STEP 7

- 1 - Put the cabinet a flat surface.
- 2 - Completely tighten all screws.

- 3 - To assembly the cabinet with caster, align the **F10** and **F11** to the holes in part **P7** and fix them with **F1** and **F2**.
- 4 - **WARNING:** Casters with lock (**F11**) must be fitted in the frontal side of the cabinet



“

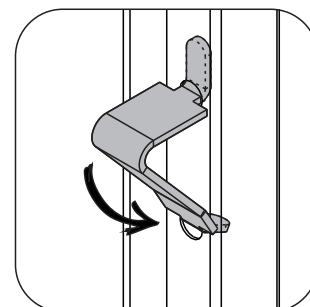
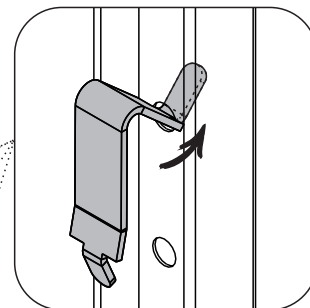
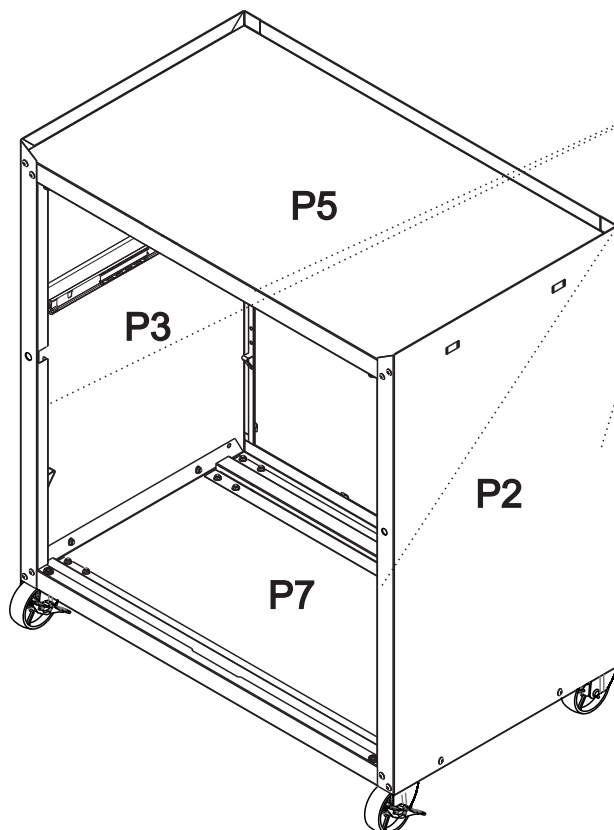
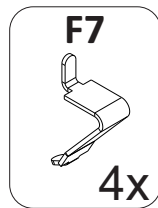
After tightening the screws, make sure the cabinet does not appear to be misaligned.

”

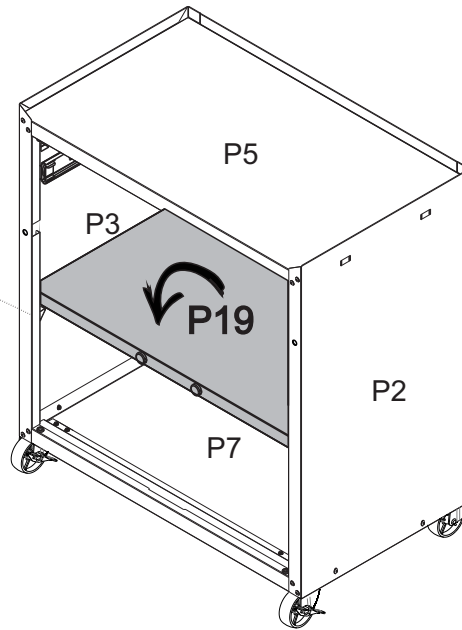
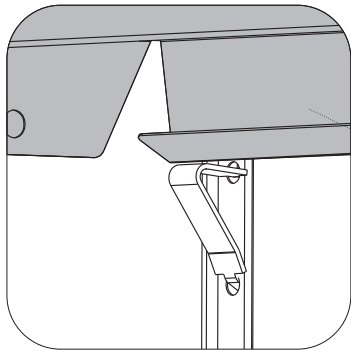
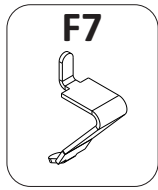


STEP 8

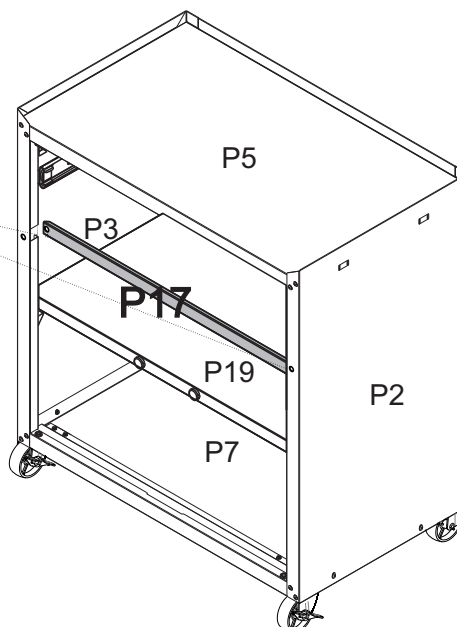
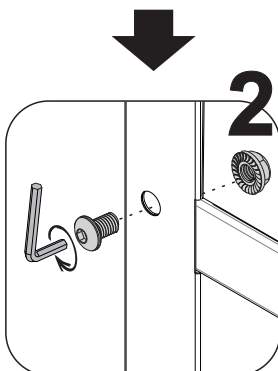
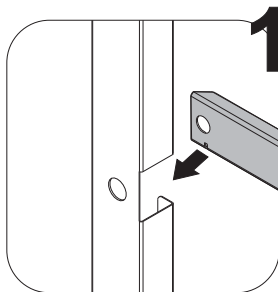
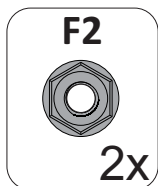
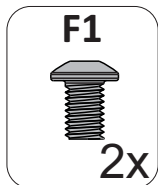
- 1- Turn the cupboard so that it will stand in the position of use
- 2- Fix **F7** to parts **P2** and **P3**, as shown here below



- STEP 9**
- 1 - Fit the lower part **P19** in diagonal position to insert it inside the cupboard
 - 2 - Lean part **P19** in part **P2**, **P3** and place it over the **F7** detailed in the figure here below
 - 3 - Lower the other side of part **P19**, leaning it over the left **F7**

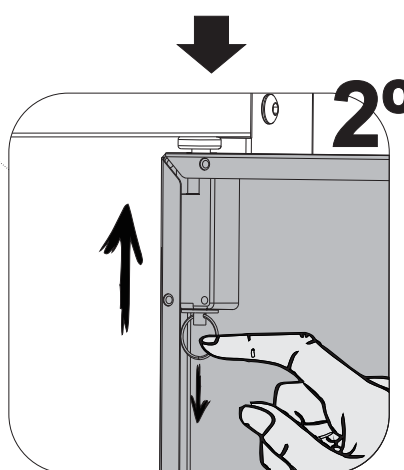
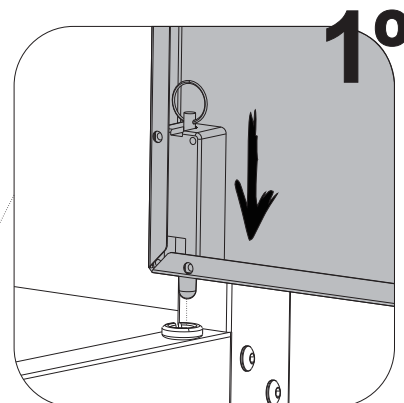
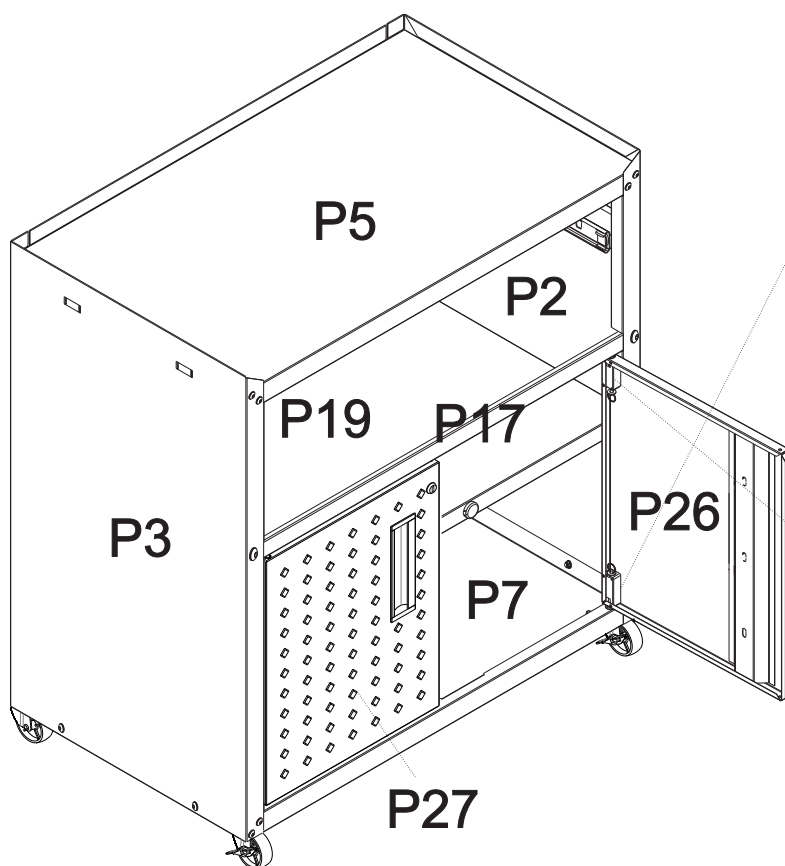


-
- STEP 10**
- 1 - Fit the lower part **P17** in diagonal position to insert it inside the cupboard.
 - 2 - Fit part **P17** in cut-offs of parts **P2** and **P3**, as detailed here below
 - 3 - Fix part **P17** in parts **P2** and **P3**, with **F1** and **F2**.



STEP 11

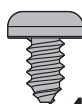
- 1 - To assembly the doors, fit door **P26** lower hinge bolt inside the bushing fixed in part **P7**. Then, pull down the pin of door **P26** upper hinge; align the door and release the pin to fit the bushing fixed in part **P17**.
- 2 - Repeat the step for part **P27**.



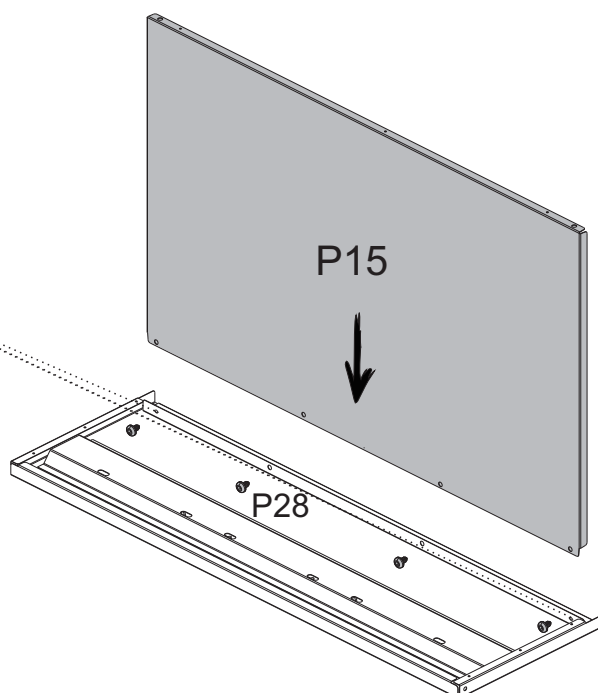
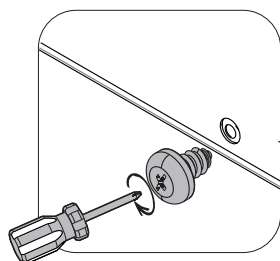
STEP 12

- 1 - Fit part **P15** in part **P28**.
- 2 - Screw the two parts with **F18**.

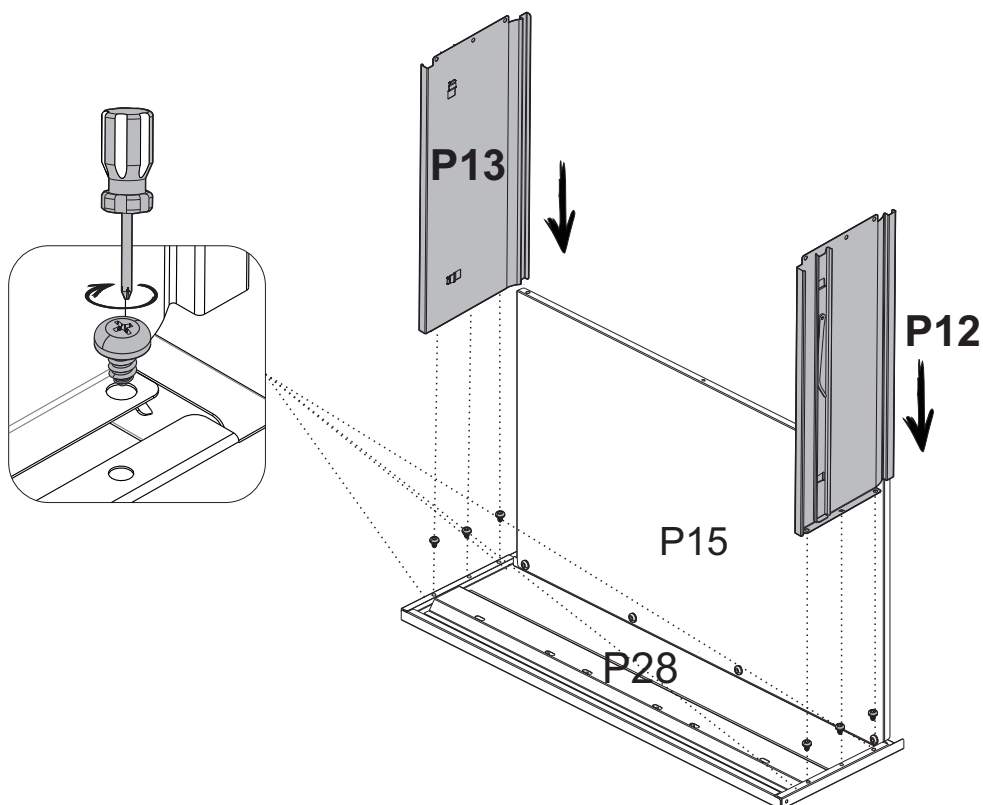
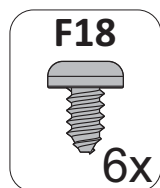
F18



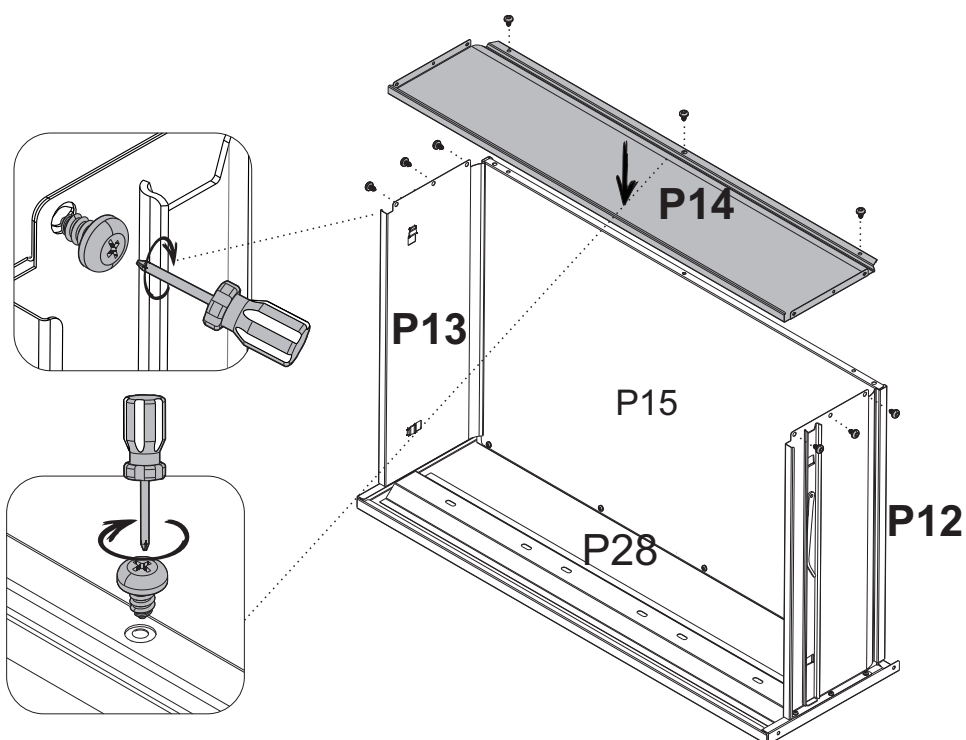
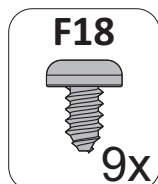
4x



- STEP 13** 1 - Align parts **P12** and **P13** on part **P15** and slide to part **P28**.
2 - Screw the two parts with **F18**.



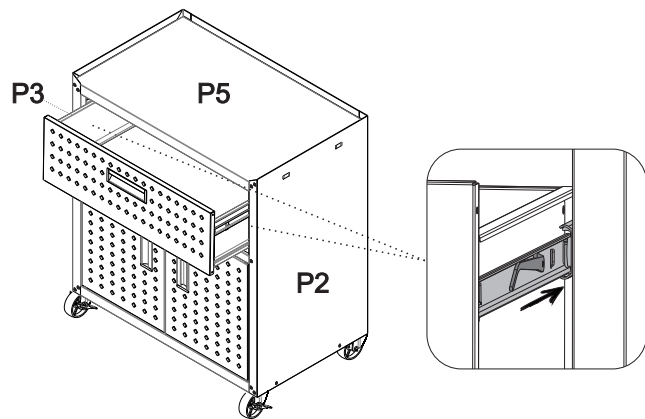
- STEP 14** 1 - Insert part **P14** over part **P15** and between parts **P12** and **P13**.
2 - Then, fix part **P14** to parts **P12**, **P13** and **P15**, with **F18**.



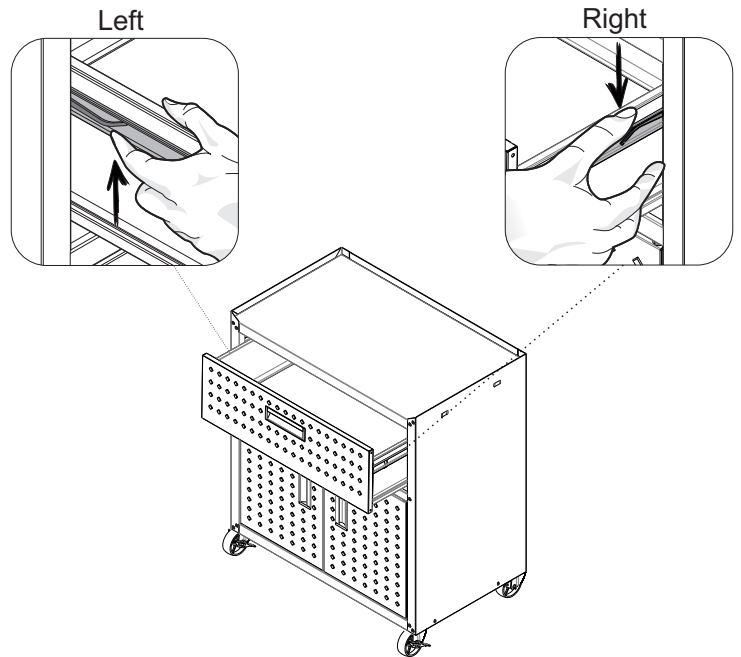
STEP 15

1 - Fit the drawers - already assembled- between parts P2 and P3, through the drawer slides.

2 - Check that the drawer slides on both sides are properly fitted. If they are not properly fitted, the drawer will not close completely. Slide the drawer in and out to test it and be sure it is sliding smoothly.

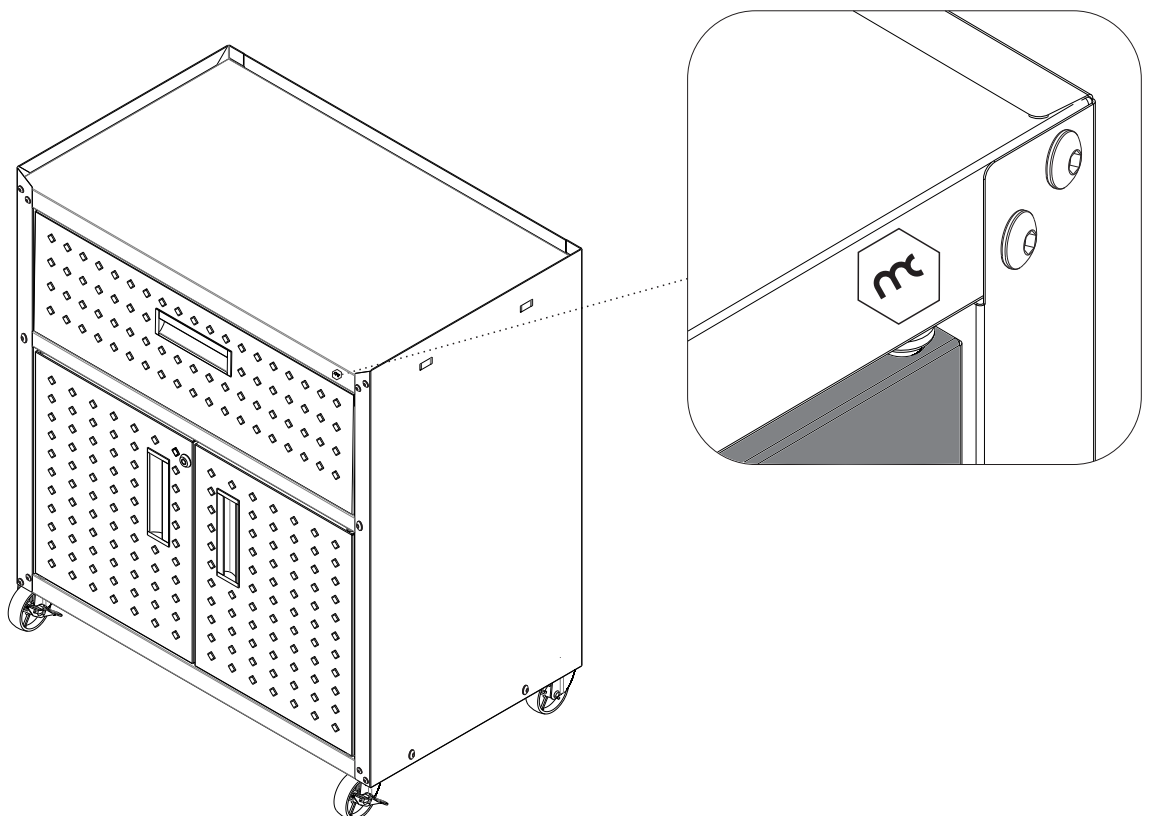


3- Procedure for removing the drawer



STEP 16

1 -Insert product logo





FORTRESS GARAGE WARRANTY TERMS

This product has the guarantee for a period of twelve (12) months, this limited warranty is effective from the date of the original consumer purchase. Proof of original purchase date is required to obtain service or replacement under this limited warranty. Once the defect of manufacture has been verified, the consumer should contact the store where he purchased the product. In the warranty period, any defective parts will be replaced free of charge by another of the same line and model. The installation and assembly in the residence of the customer is not the responsibility of the factory or the store. The assembly must correctly follow the instructions inside the packaging of each module.

ITEMS EXCLUDED FROM WARRANTY

This limited warranty does not cover:

1. In-home service including, but not limited to, service calls to correct the installation of any Manhattan Comfort Fortress Garage products or to instruct the consumer on how to use or install them.
2. Damage resulting from improper handling or shipping of products, or products damaged by accident, alteration, misuse, abuse, fire, flood, improper installation, acts of God, neglect, corrosion, modification or mishandling.
3. All travel, transportation, shipping or freight fees to deliver replacement products or to return defective products.
4. Factory specified replacement parts or product replacement when your product is used in other than normal, single-family household use, such as a commercial environment or handled in a manner contrary to published user or operator instructions and/or installation instructions.
5. Aesthetic damages including scratches, dings, dents or cracks that do not affect the structural or functional capability of the product.
6. Any labor costs during the limited warranty period.
7. Damage resulting from improper loading beyond the specified maximum weight capacity outlined in the assembly instructions provided with the product including overloading of hooks, baskets, shelves, cabinets, and other Manhattan Comfort Fortress Garage accessories used with the product.
8. Surfaces damaged due to chemical interaction resulting in corrosion of paint or metal.
9. Replacement keys or locking mechanism.

The cost of repair or replacement under these excluded circumstances shall be borne by the customer.

DISCLAIMER OF IMPLIED WARRANTY

Implied warranties, including any implied warranty of merchantability or implied warrant of fitness for a particular purpose, are limited to one year or shortest period allowed by law.

LIMITATION OF REMEDIES; EXCLUSION OF INCIDENTAL AND CONSEQUENTIAL DAMAGES

Your sole and exclusive remedy under this limited warranty shall be product repair as provided herein. Manhattan Comfort Fortress Garage shall not be liable for incidental or consequential damages.

TAKING GOOD CARE OF YOUR CABINET

Cleaning and caring instructions:

Avoid dragging objects on top of the cabinet. They might scratch the finishing.

Only non-abrasive natural chemical products are recommended to clean your cabinet. Simply wipe the cabinet down with a wet cloth to remove the cleaning product excess.

Never clean the cabinet with scouring powders, steel scrubber pads or any other product which can scratch its surface.

Chemical products are not recommended.

Cabinet surfaces should not be covered with colored plastic or paper sheets.

Acid substances must remain properly stored in sealed containers.

Avoid the direct contact of water with other surfaces, as the humidity can affect the durability of the cabinets.

Avoid cabinets exposure to direct Sun light. Drapers suggested.

This guidance should be saved for future reference, if necessary.



Stuck? Questions? We are here to help.

1-888-230-2225

help@manhattancomfort.com