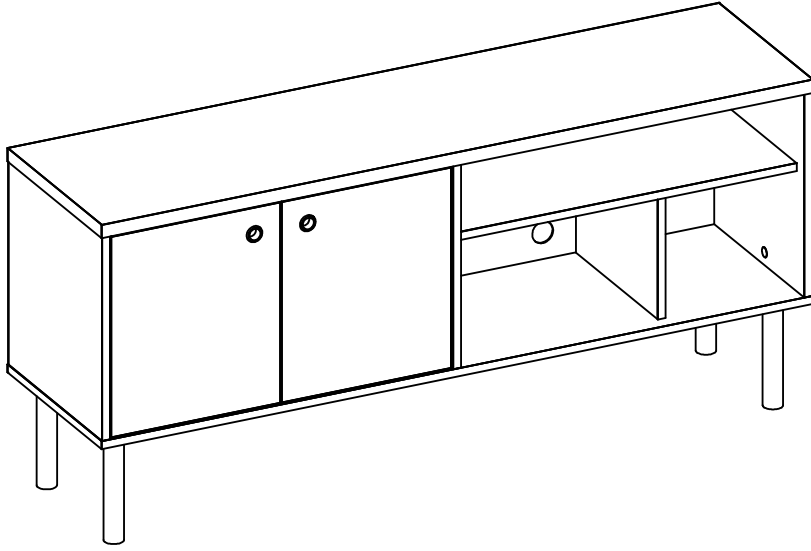
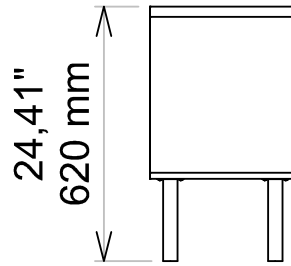
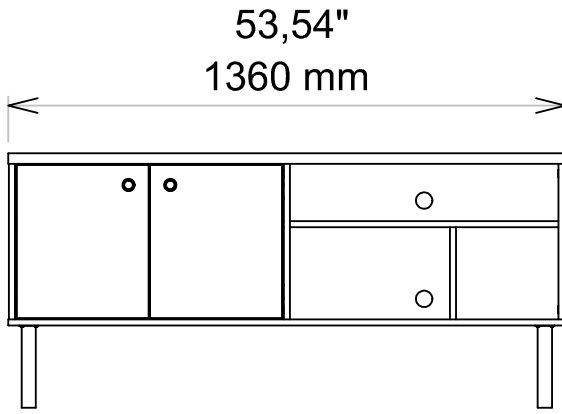


Windsor 53.54

TV Stand
3LC



Dimensions/Dimensiones:



Assembly Instructions/
Instrucciones de Montaje.

Introduction / Introducción:

***Read the manual and follow the steps for the perfect assembly.**

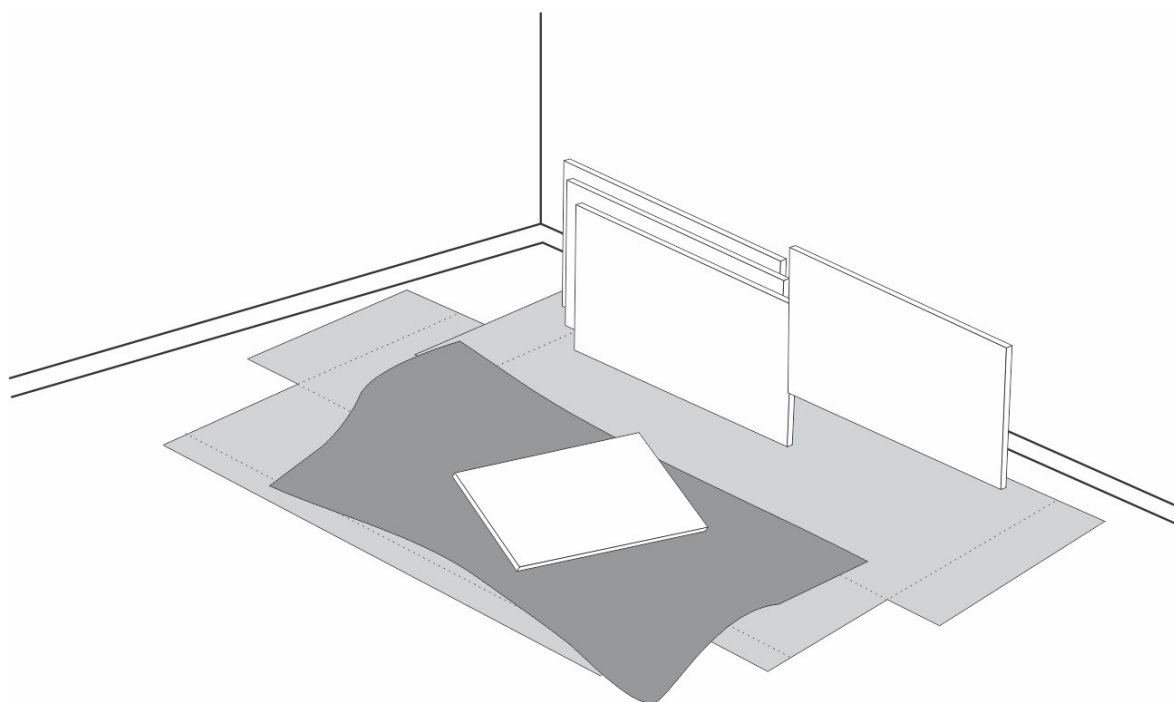
***Prepare the environment before you start. Leave the room completely clean to start the assembly. Use the carton of the box as a protection layer to separate and protect the parts in order to avoid damages. Image 01.**

***Don't install it in areas that may be damp, with infiltrations.**

*Observe cuidadosamente el manual y siga estrictamente los pasos de montaje.

*Antes de comenzar prepare el ambiente, dejando completamente limpio y con buen espacio para iniciar el montaje del producto. Utilice el cartón del propio embalaje, así como la protección de manta aislante para separar y apoyar las piezas retiradas de la caja. Forra el área de montaje con la manta aislante, así evita avería en la piezas durante el proceso de montaje, Image 01.

*No instalar en superficies húmedas, conyener infiltraciones.



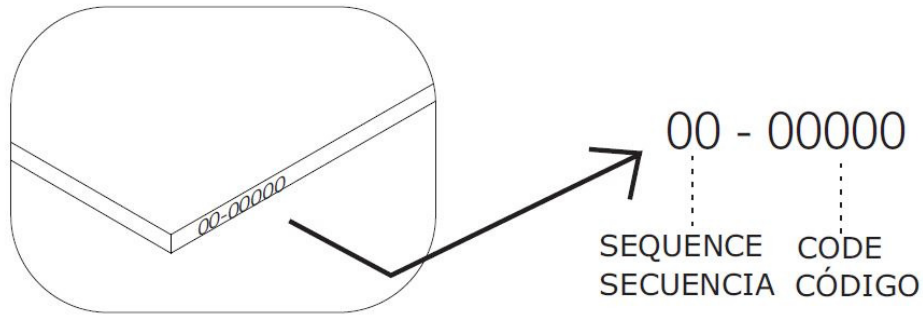
*Image 01 Separate the parts / Piezas separadas

*** Before beginning the assembly check all components with the parts list, separate hardware by type and assemble the furniture lying down.**

* Antes de comenzar el montaje compruebe todos los componentes con la lista de piezas, separe los herrajes por tipo e montar el móvil acostado.

*** The parts come with their code stamped on.**

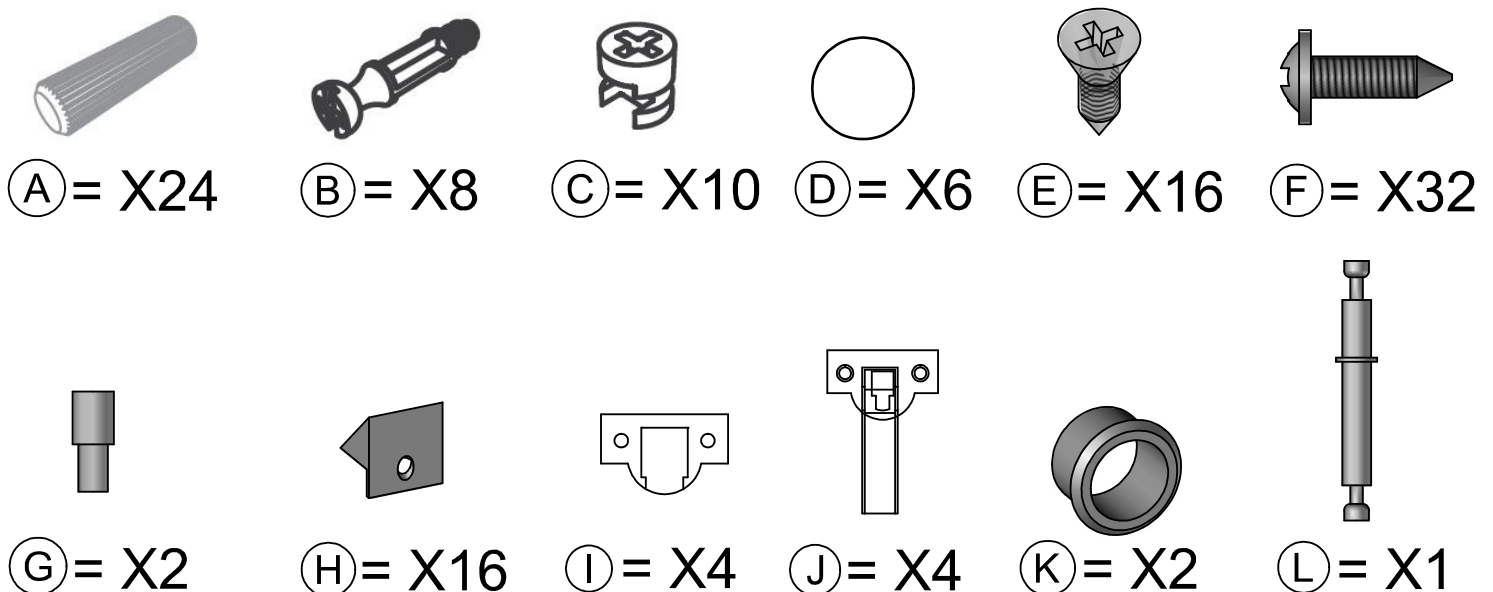
* Los códigos de las pieza están sellados en las mismas.



Tools / Herramientas

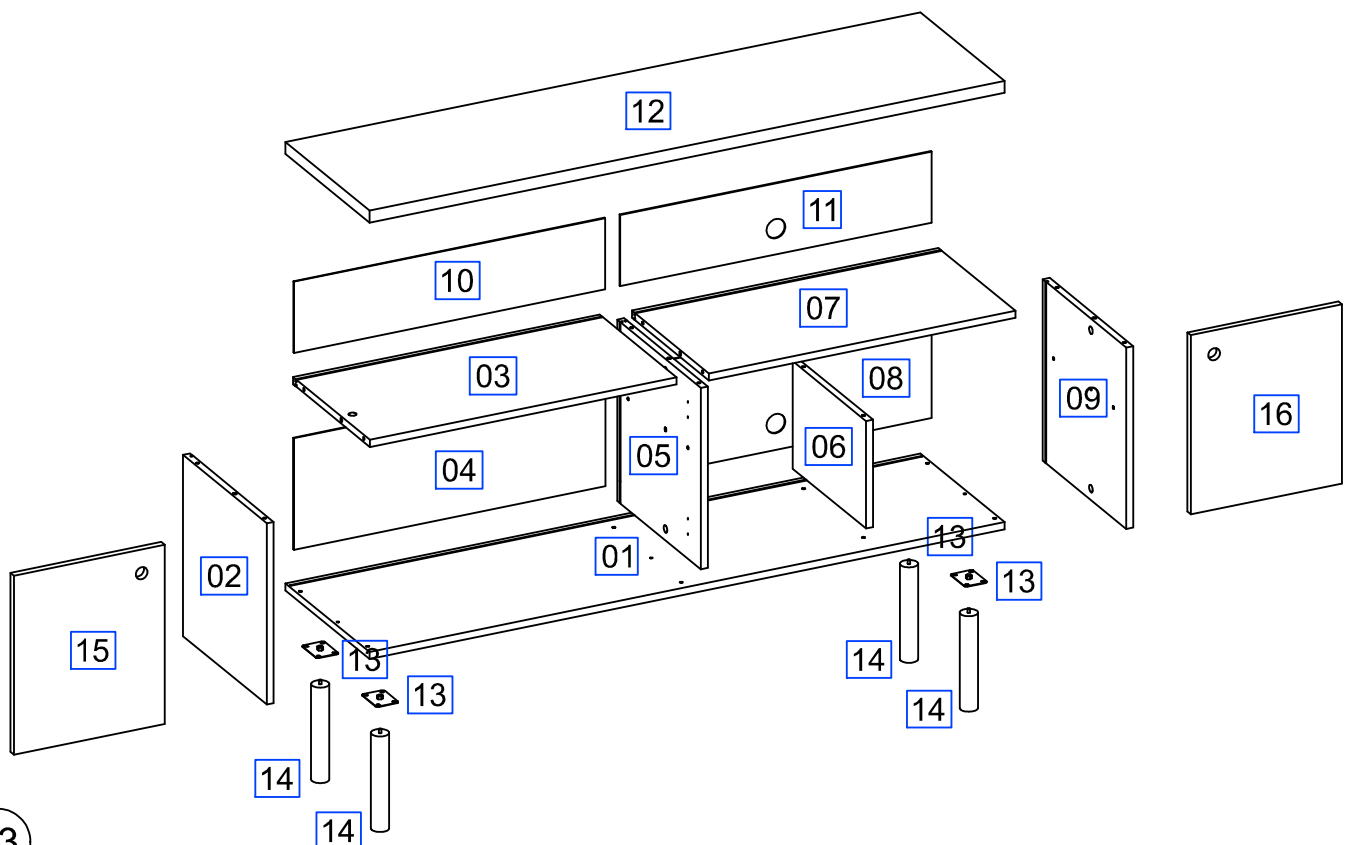


Hardwares / Accesorios






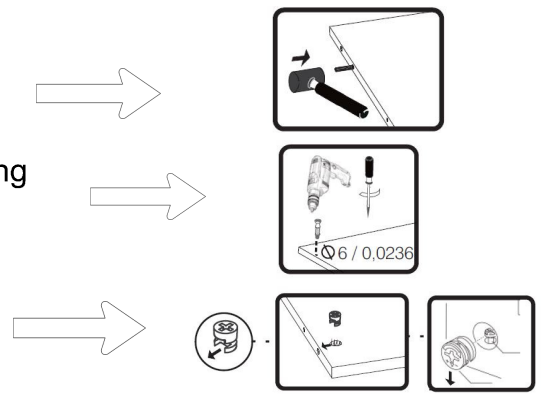
SECUENCIA	CODE	DESCRIPTION	QTY
01	50937	BASE	1
02	50941	LEFT SIDE	1
03	50942	LEFT SHELF	1
04	50947	LEFT LOWER BACKGROUND	1
05	50939	LEFT DIVISION	1
06	50945	RIGHT DIVISION	1
07	50946	RIGHT SHELF	1
08	51133	LOWER BOTTOM BACKGROUND	1
09	50940	RIGHT SIDE	1
10	50948	TOP LEFT BACKGROUND	1
11	51132	TOP RIGHT BACKGROUND	1
12	50938	TOP BOARD	1
13	MET0121	FOOT SUPORT	4
14	PES0370	CYLINDRICAL FOOT	4
15	50943	LEFT DOOR	1
16	50944	RIGHT DOOR	1

SECUENCIA	CÓDIGO	DESCRIPCIÓN	CANTIDAD
01	50937	BASE	1
02	50941	LATERAL IZQUIERDA	1
03	50942	PRATELERA IZQUIERDA	1
04	50947	FONDO INFERIOR IZQUIERDA	1
05	50939	DIVISORÍA IZQUIERDA	1
06	50945	DIVISORÍA DERECHA	1
07	50946	PRATELERA DERECHA	1
08	51133	FONDO INFERIOR DERECHA	1
09	50940	LATERAL DERECHA	1
10	50948	FONDO SUPERIOR IZQUIERDA	1
11	51132	FONDO SUPERIOR DERECHA	1
12	50938	CUBIERTA	1
13	MET0121	SOPORTE PARA PIES	4
14	PES0370	PIE CILINDRICO	4
15	50943	PUERTA IZQUIERDA	1
16	50944	PUERTA DERECHA	1






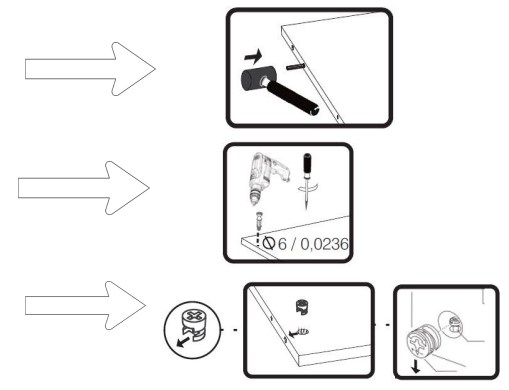
*** Before starting, you have to know:**

- () You should always fix the dowel until the end using a rubber hammer.
- () You must screw thi hardware using an eletric drilling machine or phillips screwdriver only in the 0,236 inches hole (the smaller hole).
- () Always fix this hardware with the arrow faced to the hole.



*** Antes de empezar, necesitas saber:**

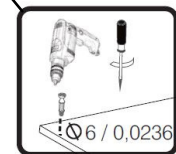
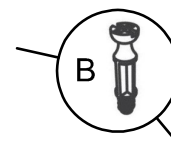
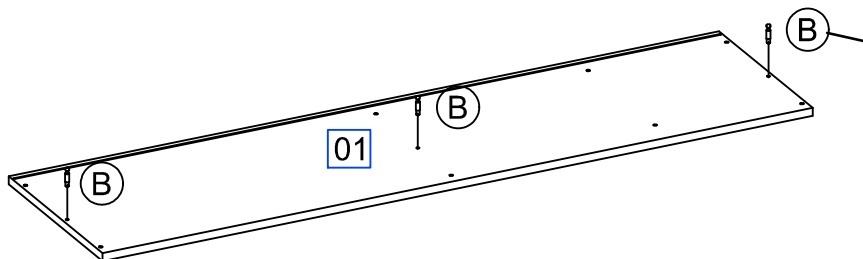
- () Deves siempre fijar ese accesorio hasta el final usando un martillo de caucho
- () Deves siempre fijar ese accesorio usando un taladrador eléctrico o llave Phillips solamente en el agujero de 6mm.
- () Deves siempre fijar ese accesorio con la seta hacia el agujero



STEP/PASO 01

*** Insert hardware "B" on the surface of part 01.**

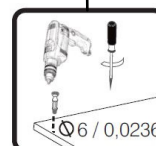
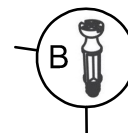
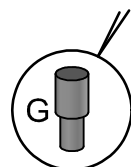
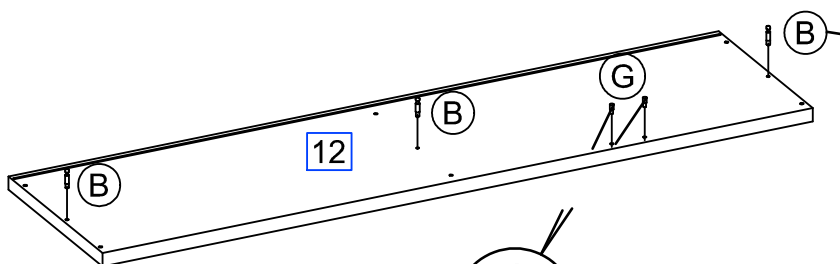
* Encaja los accesorios "B" en las caras.



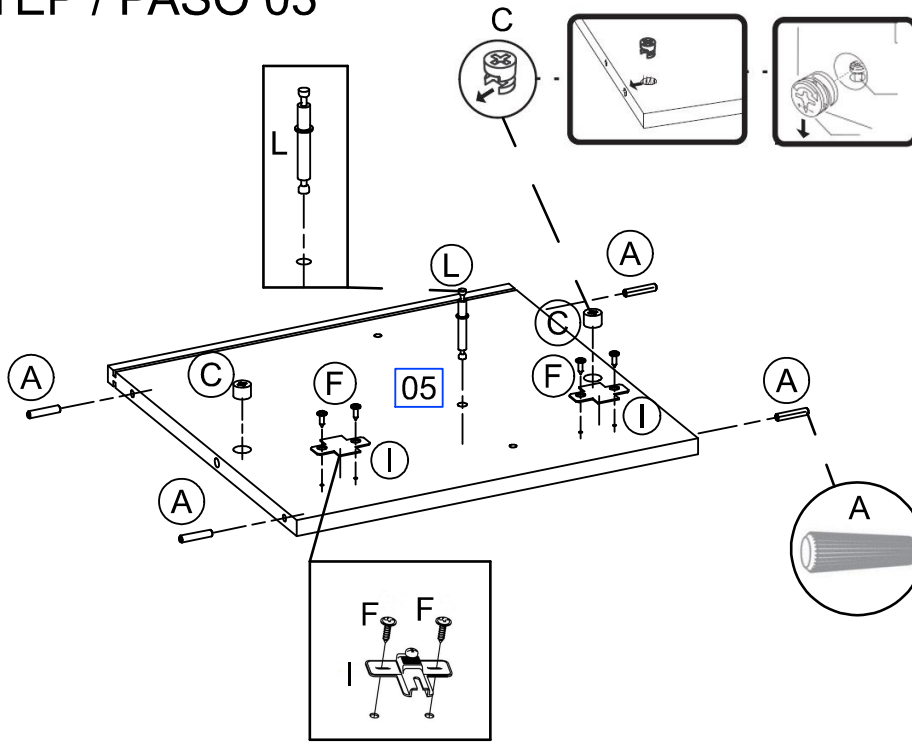
STEP / PASO 02

*** Insert accessorie "B" and "G", on the face according to the image.**

*Encaja los accesorios "B" y "G", en las caras.



STEP / PASO 03



(A) * Insert accessories "A" into the extremity of part 05.

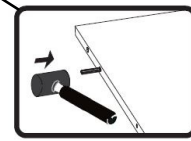
* Encaja los accesorios "A" en los extremos de la pieza.

(C)
(L) * Insert hardware "C" and "L" on the part 05.

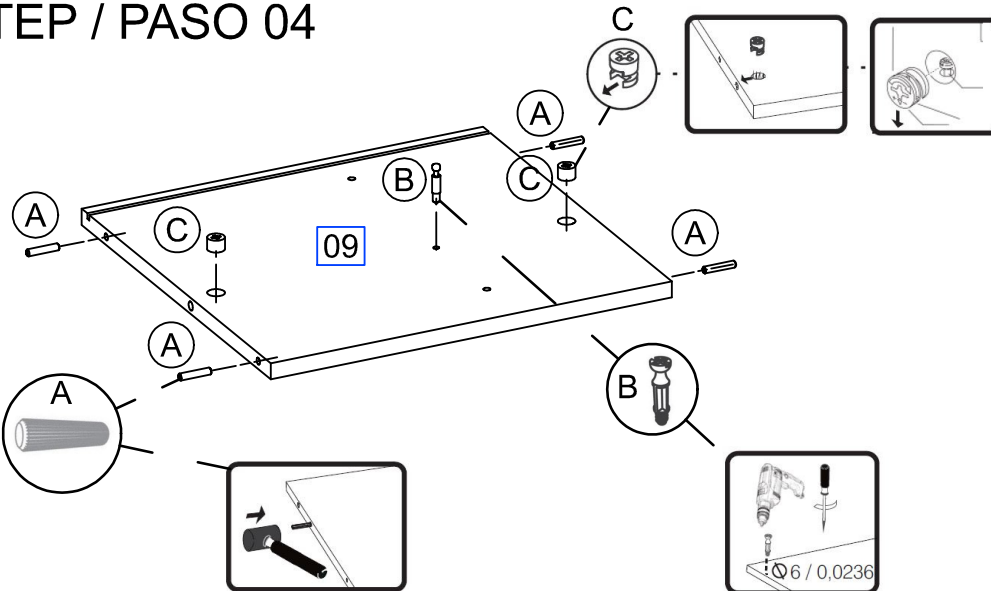
* Encaja los accesorios "C" y "L" en las caras.

(F)
(I) * Insert the hardware "I", using the screw "F".

* Insertir el componente "I", usando el accesorio "F".



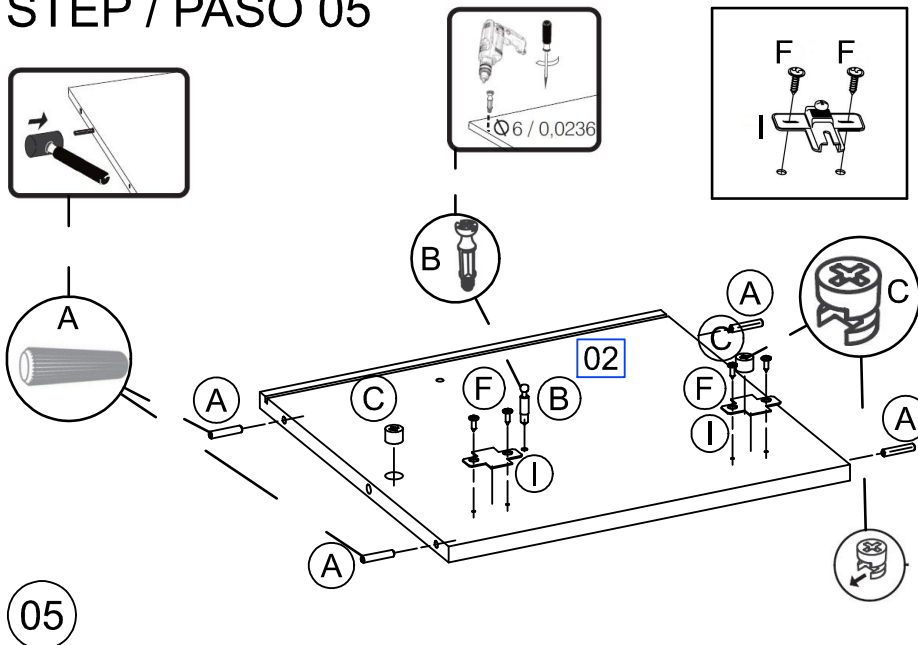
STEP / PASO 04



* Insert hardware "A" into the extremities of the part 09 and hardware "B" and "C" on the face of it.

* Encaja los accesorios "A" en los extremos de la pieza, "B" y "C" en las caras.

STEP / PASO 05



(A) * Insert accessories "A" into the extremity of part 02.

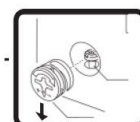
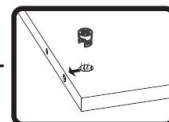
* Encaja los accesorios "A" en los extremos de la pieza.

(B)
(C) * Insert hardware "B" and "C" on the part 02.

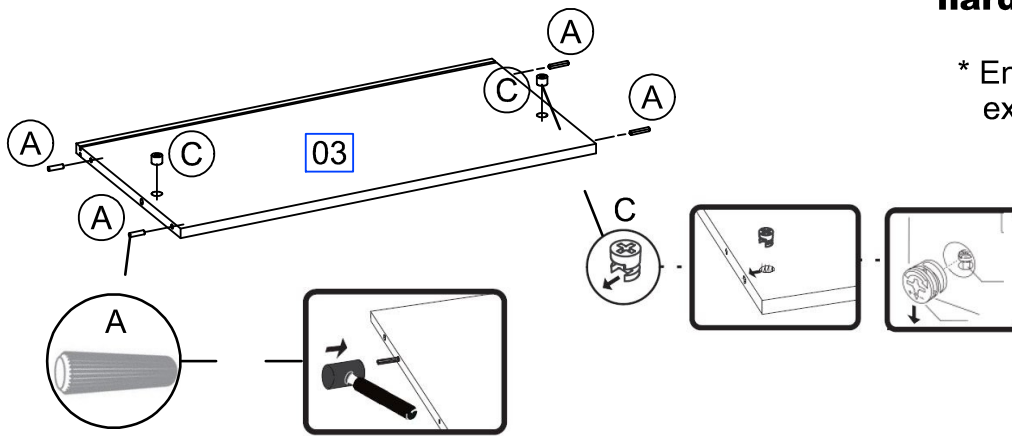
* Encaja los accesorios "B" y "C" en las caras.

(F)
(I) * Insert the hardware "I", using the screw "F".

* Insertir el componente "I", usando el accesorio "F".



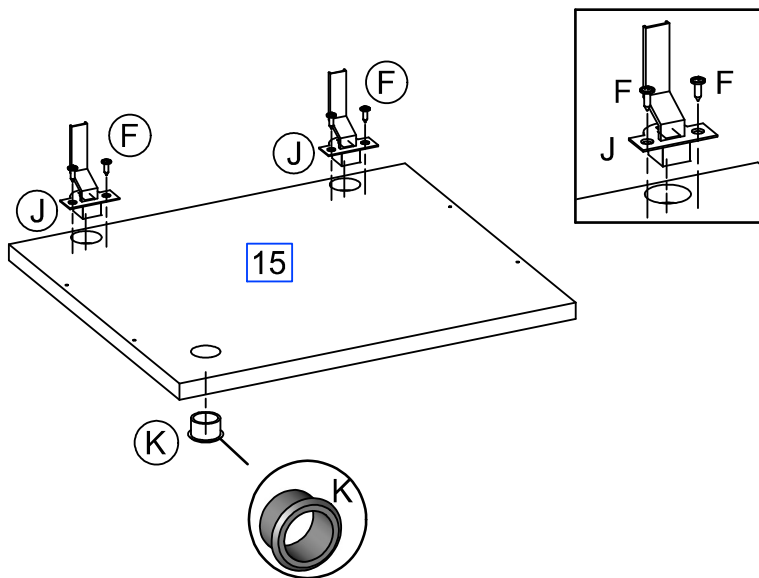
STEP / PASO 06



*** Insert hardware "A" on the extremities of the part 03 and hardware "C" on the face of it.**

*** Encaja los accesorios "A" en los extremos de la pieza, "C" en las caras.**

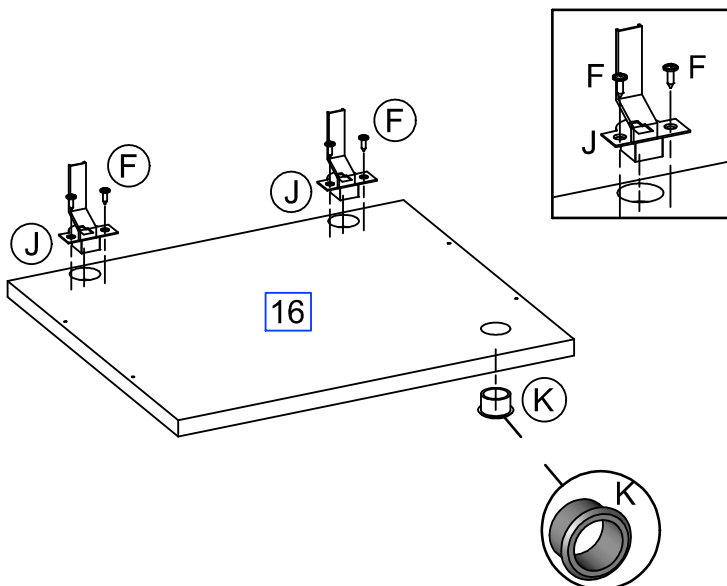
STEP / PASO 07



*** Insert the hardware "J", using the screw "F". And accessorie "K" according to the image.**

*** Inserir el componente "J", usando el accesorio "F". "K" en las caras.**

STEP / PASO 8



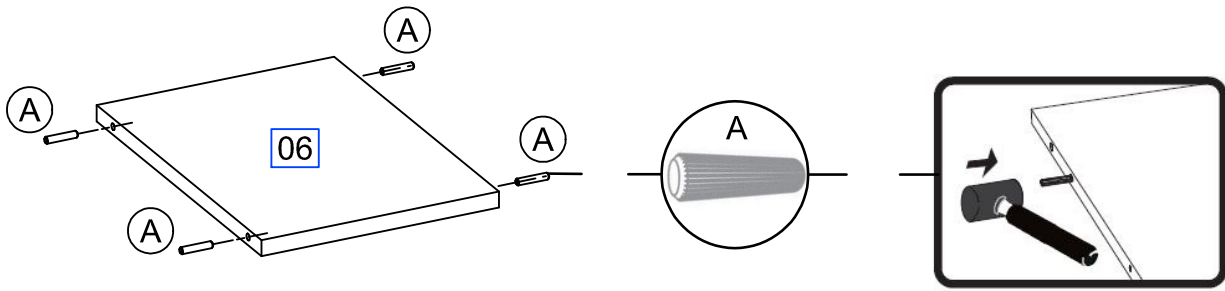
*** Insert the hardware "J", using the screw "F". And accessorie "K" according to the image.**

*** Inserir el componente "J", usando el accesorio "F". "K" en las caras.**

STEP / PASO 09

*** Insert accessory "A" into the extremity of part 06.**

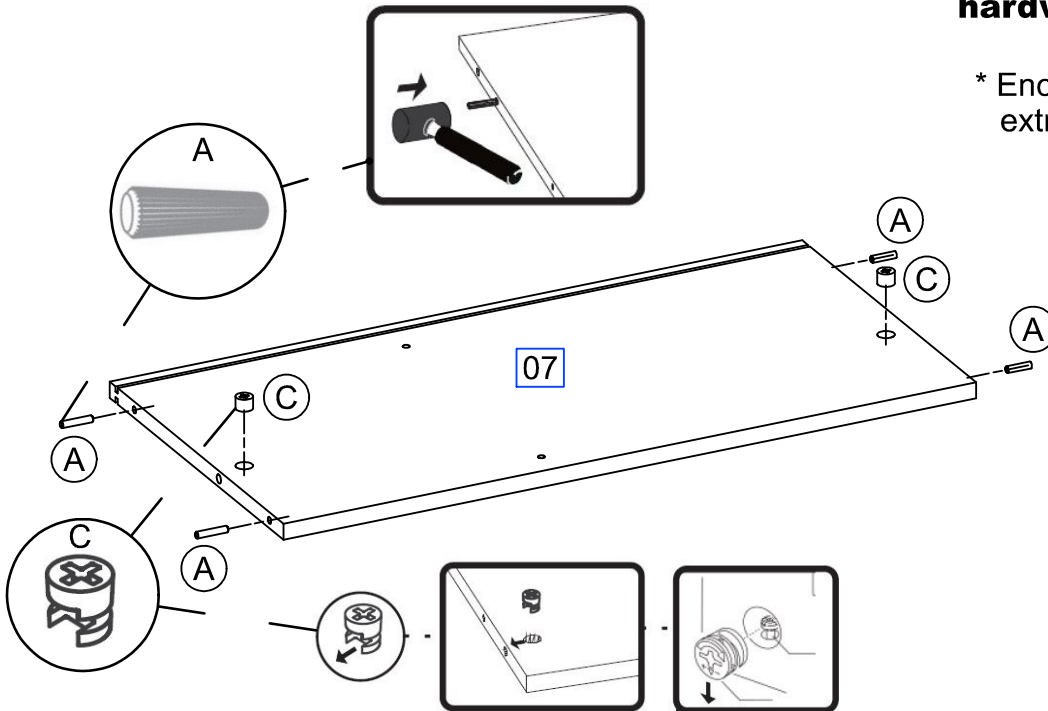
* Encaja los accesorios "A" en los extremos de la pieza 06.



STEP / PASO 10

*** Insert hardware "A" on the extremities of the part 07 and hardware "C" on the face of it.**

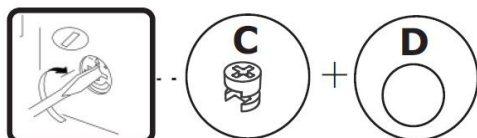
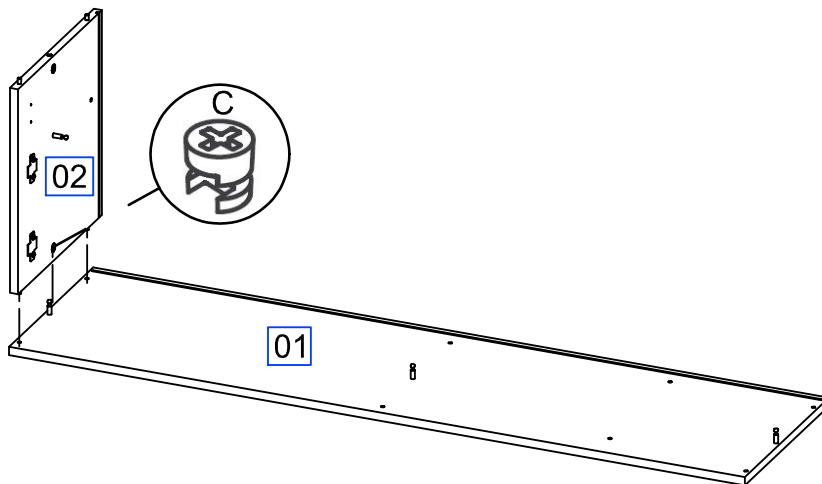
* Encaja los accesorios "A" en los extremos de la pieza, "C" en las caras.



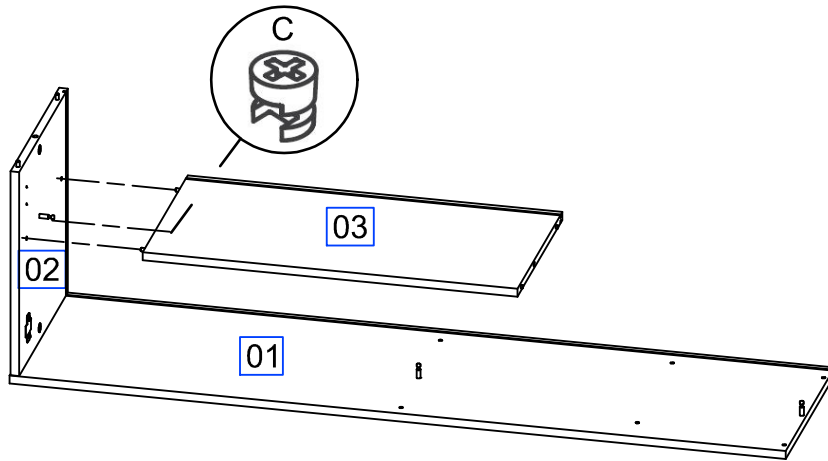
STEP / PASO 11

*** Attach part 02 to the part 01 according to the image. Then screw then using the nuts "C".**

* Enganche pieza 02 en la pieza 01. Atonillar las tuercas.

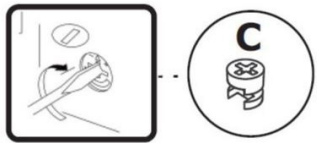


STEP / PASO 12

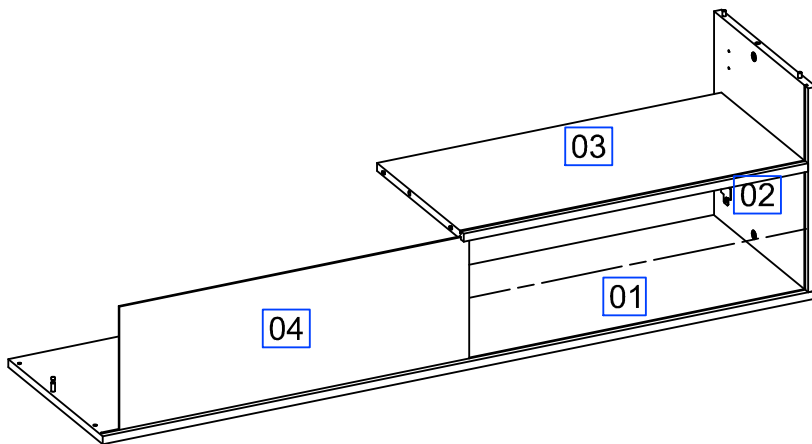


* **Attach part 03 to the part 02 according to the image. Then screw then using the nuts "C".**

* Enganche pieza 03 en la pieza 02. Atonillar las tuercas.



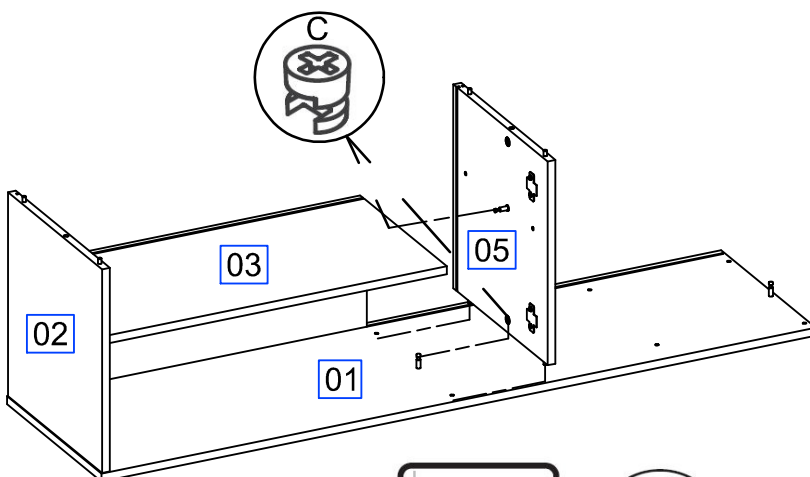
STEP / PASO 13



* **Attach part 04 to the parts 01, 02 and 03 according to the image.**

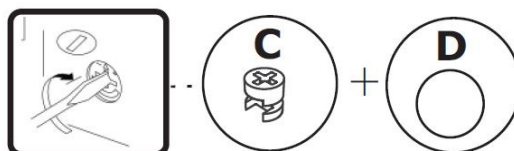
* Enganche pieza 04 en las piezas 01, 02 y 03.

STEP / PASO 14

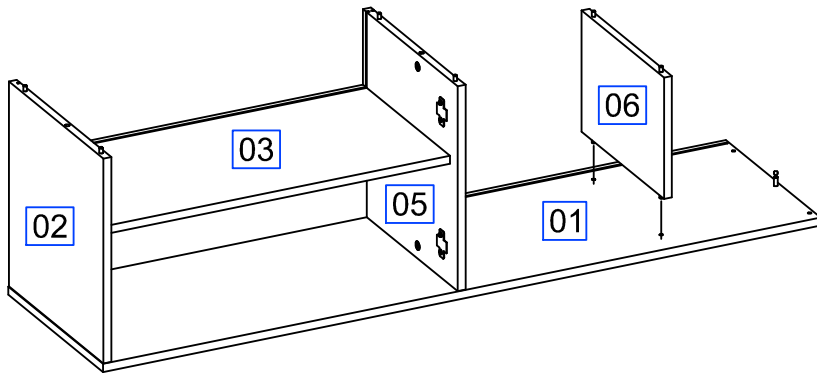


* **Attach part 05 to the parts 01 and 03 according to the image. Then screw then using the nuts "C".**

* Enganche pieza 05 en las piezas 01 y 03. Atonillar las tuercas.



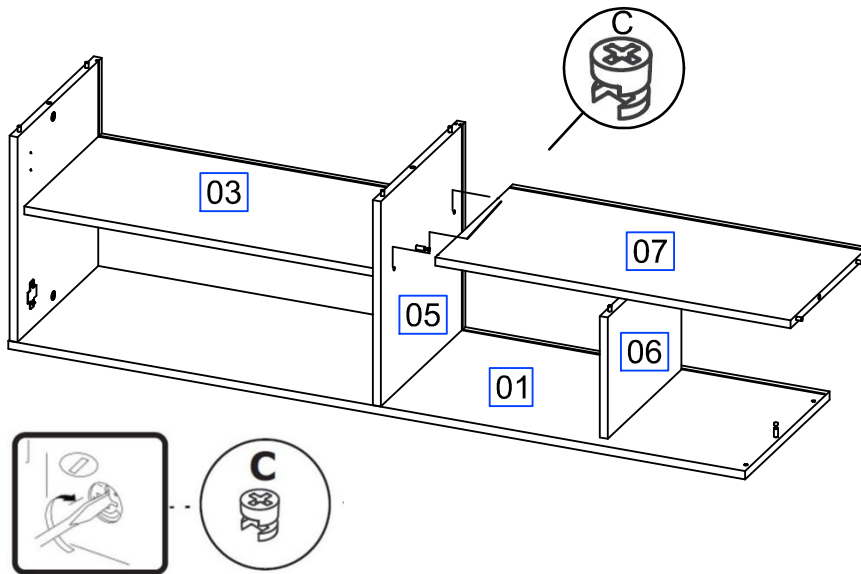
STEP / PASO 15



*** Attach part 06 according to the existing pre holes of part 01.**

* Enganche pieza 06, acuerdo las marcaciones existentes en el pieza 01.

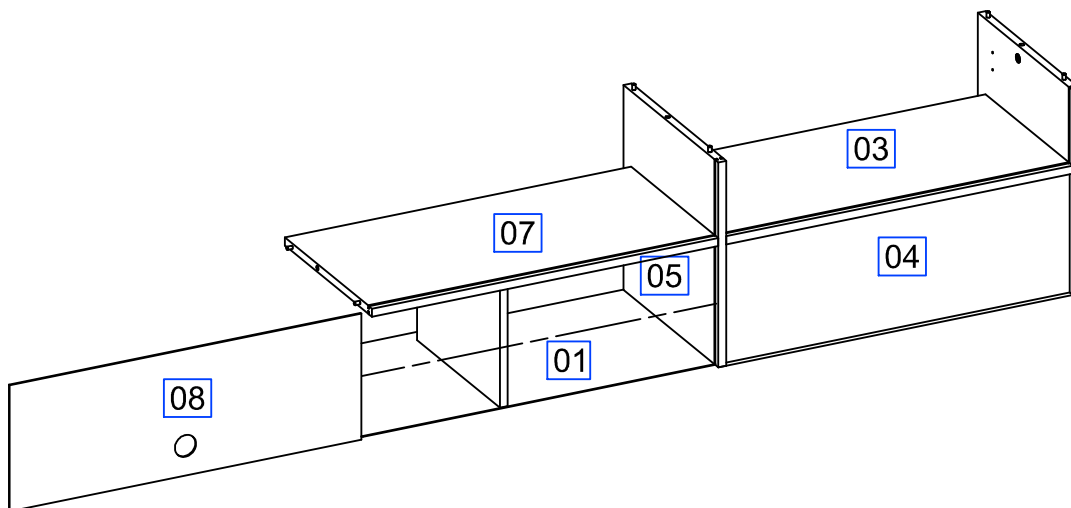
STEP / PASO 16



*** Attach part 07 to the parts 05 and 06 according to the image. Then screw them using the nuts "C".**

* Enganche pieza 07 el las piezas 05 y 06. Atonillar las tuercas.

STEP / PASO 17



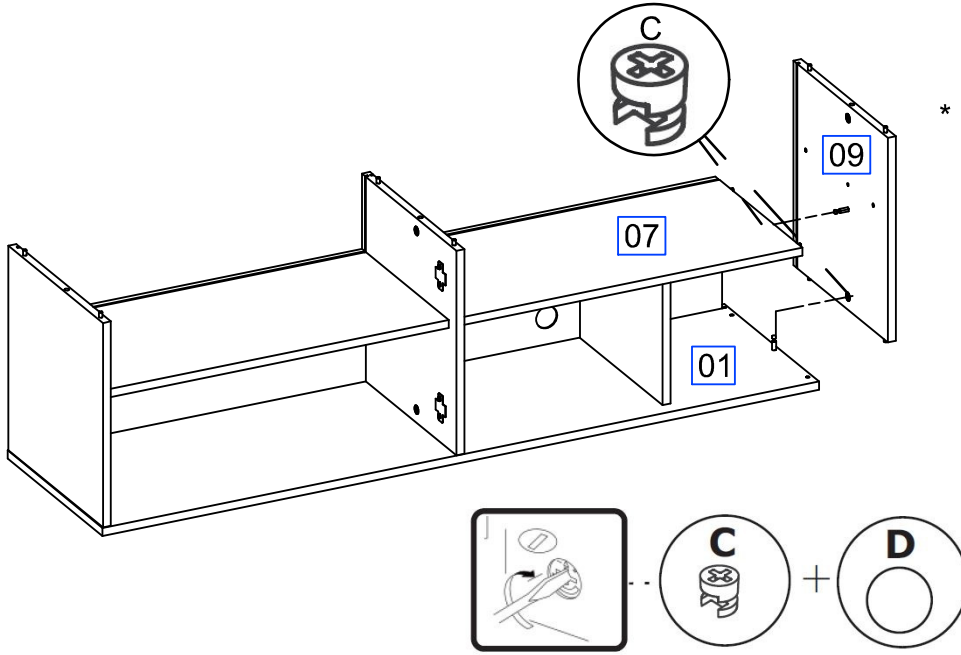
*** Attach part 08 to the parts 01, 05 and 07 according to the image.**

* Enganche pieza 08 en las piezas 01, 05 y 07.

STEP / PASO 18

* **Attach part 09 to the parts 01 and 07 according the image. Then screw them using the nuts "C".**

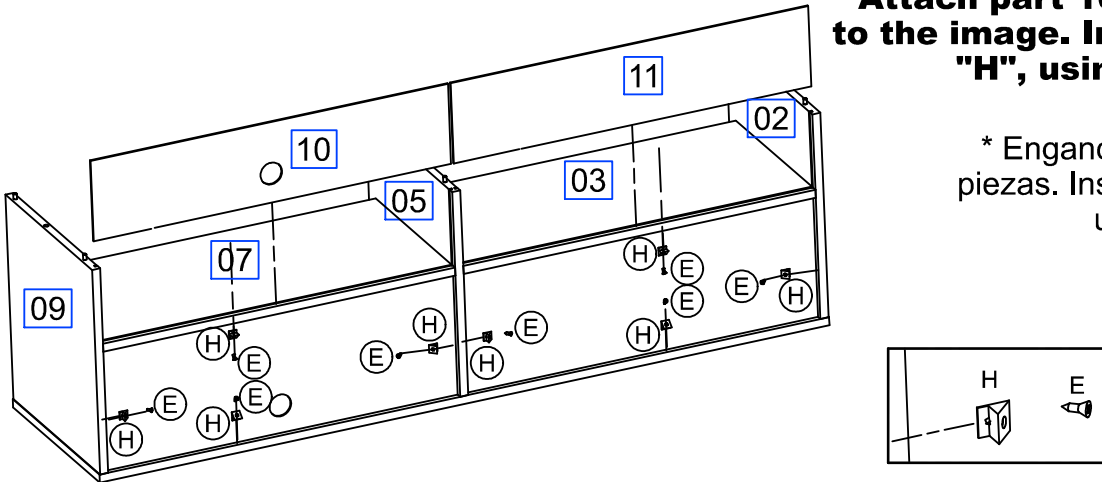
* Enganche pieza 09 en las piezas 01 y 07. Atonillar las tuercas.



STEP / PASO 19

* **Attach part 10 and 11 according to the image. Insert the hardware "H", using the screw "E" to fix background.**

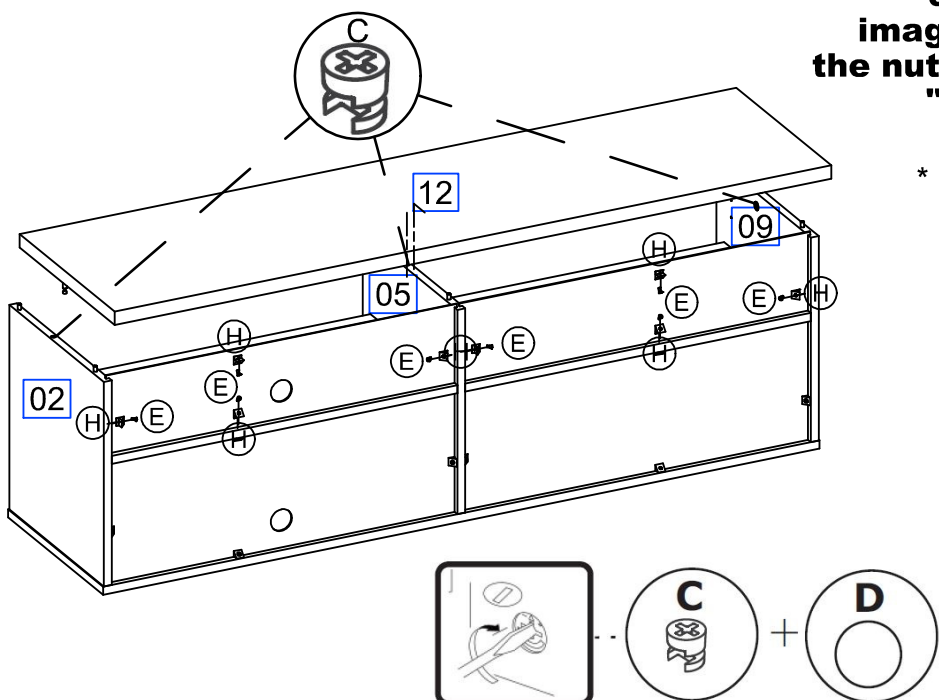
* Enganche pieza 10 y 11 en las piezas. Insertir el componente "H", usando el accesorio "E".



STEP / PASO 20

* **Attach part 12 to the parts 02, 05 and 09 according to the image. Then screw them using the nuts "C". Insert the hardware "H", using the screw "E" to fix background.**

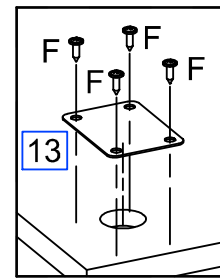
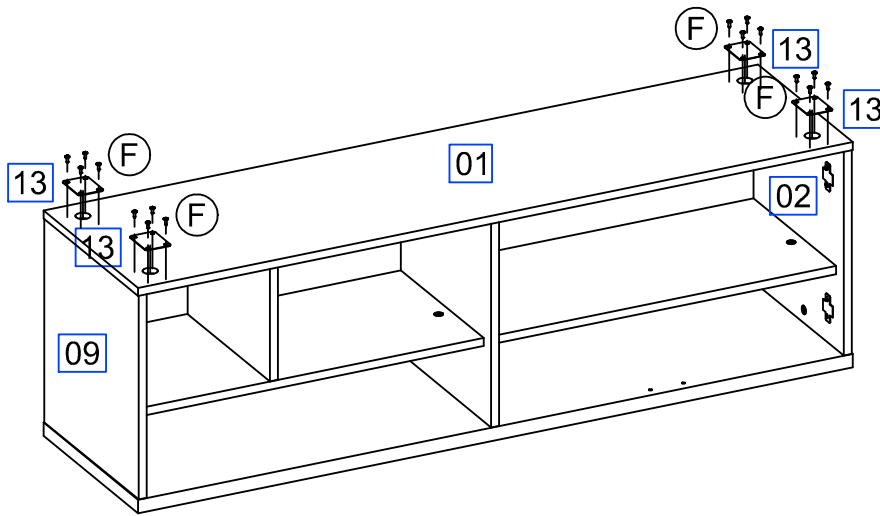
* Enganche pieza 12 en las piezas 02, 05 y 09. Atonillar las tuercas. Insertir el componente "H", usando el accesorio "E".



STEP / PASO 21

*** Screw the part 13, using the hardware "F" according to the existing pre holes of part 01.**

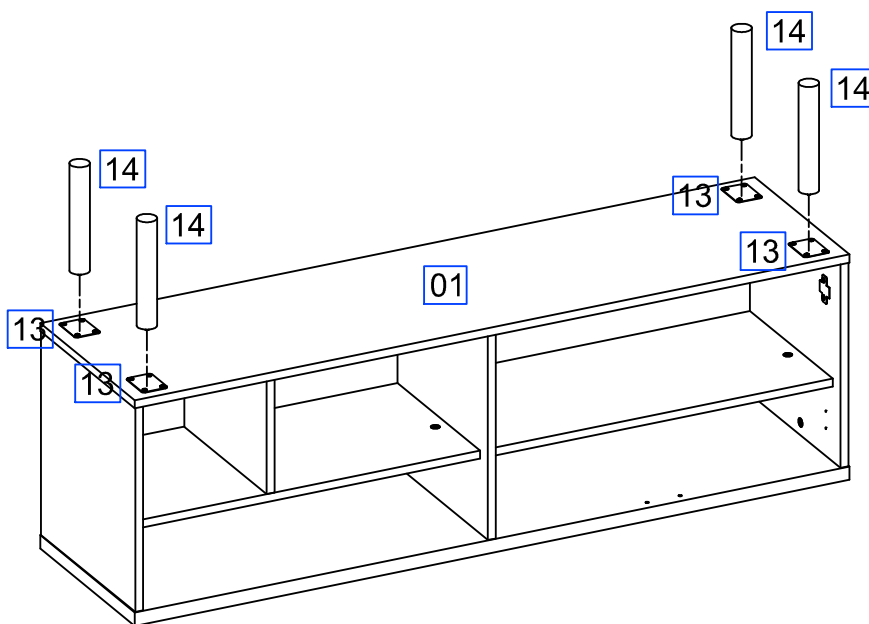
* Fijar pieza "13", usando accesorios "F", acuerdo las marcaciones existentes en el pieza 01.



STEP / PASO 22

*** Attach part 14 to the part 13 according to the image.**

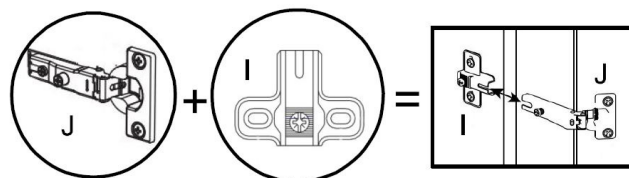
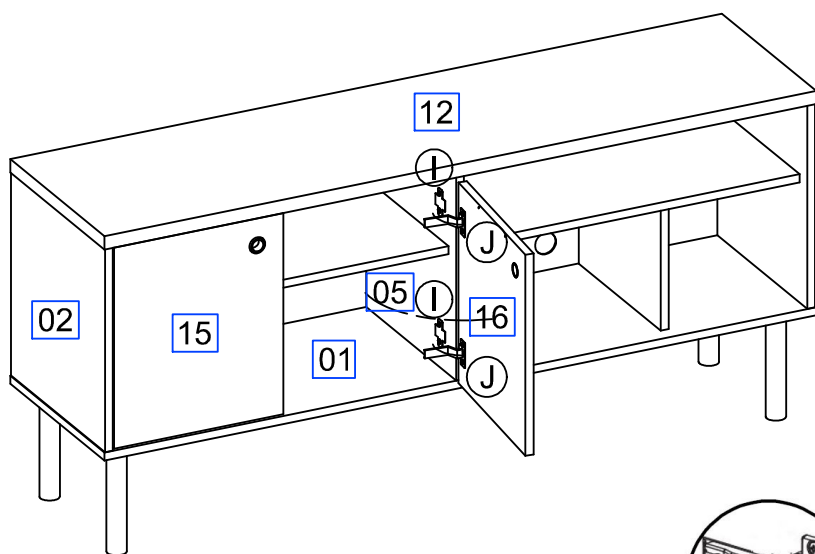
* Enganche pieza 14 en la pieza 13, acuerdo con la imagen.



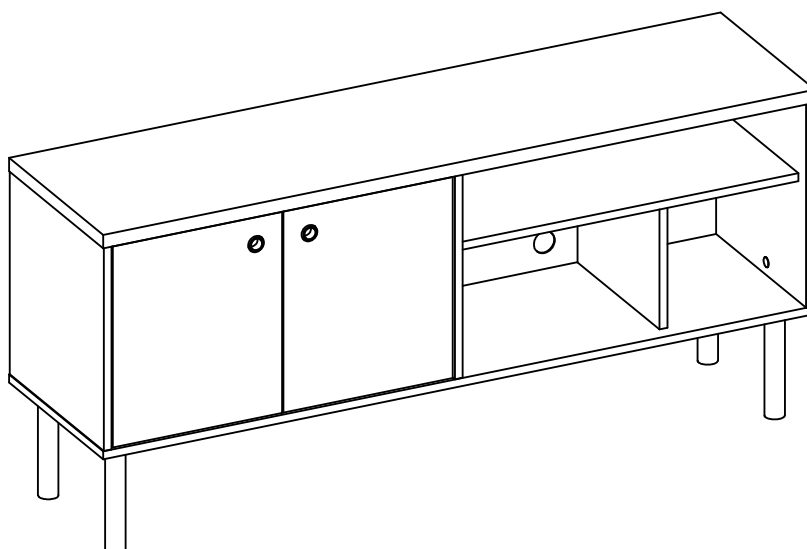
STEP / PASO 23

*** Attach the hardware "J" to the doors 15 and 16 to the hardware "I" of the sides.**

* Enganchar el accesorio "J" de las puertas 15 y 16 en el accesorio "I" de las laterales.



FINAL VIEW / ASPECTO FINAL

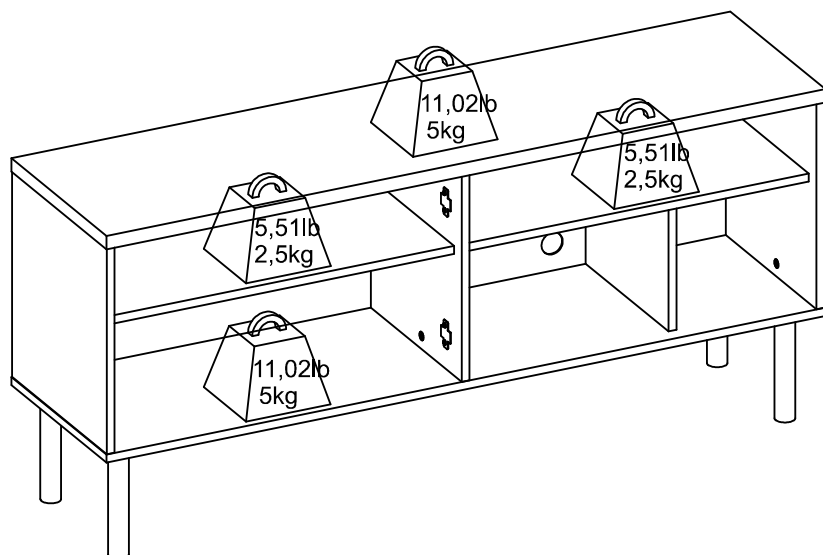


WEIGHT / PESO



*** Be aware about maximum weights shown in the assembly instruction.**

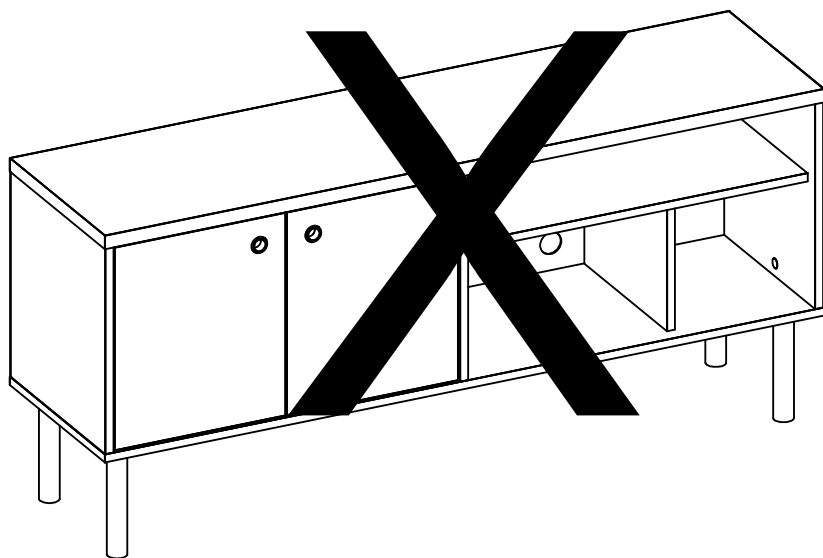
* Todos los pesos máximos indicados en el manual deben ser respetados.



AVOID ACCIDENTS / PREVENIR ACCIDENTES

*** Don't climb or lean on the furniture.**

* No se suba ni se apoye en el mueble.



MAINTENANCE AND CLEANING / MANTENIMIENTO Y LIMPIEZA

*** For cleaning use only slightly dampened in water.**

* Para limpieza utilice sólo un paño húmedo con agua.

