

ACCENTUATIONS

by MANHATTAN COMFORT

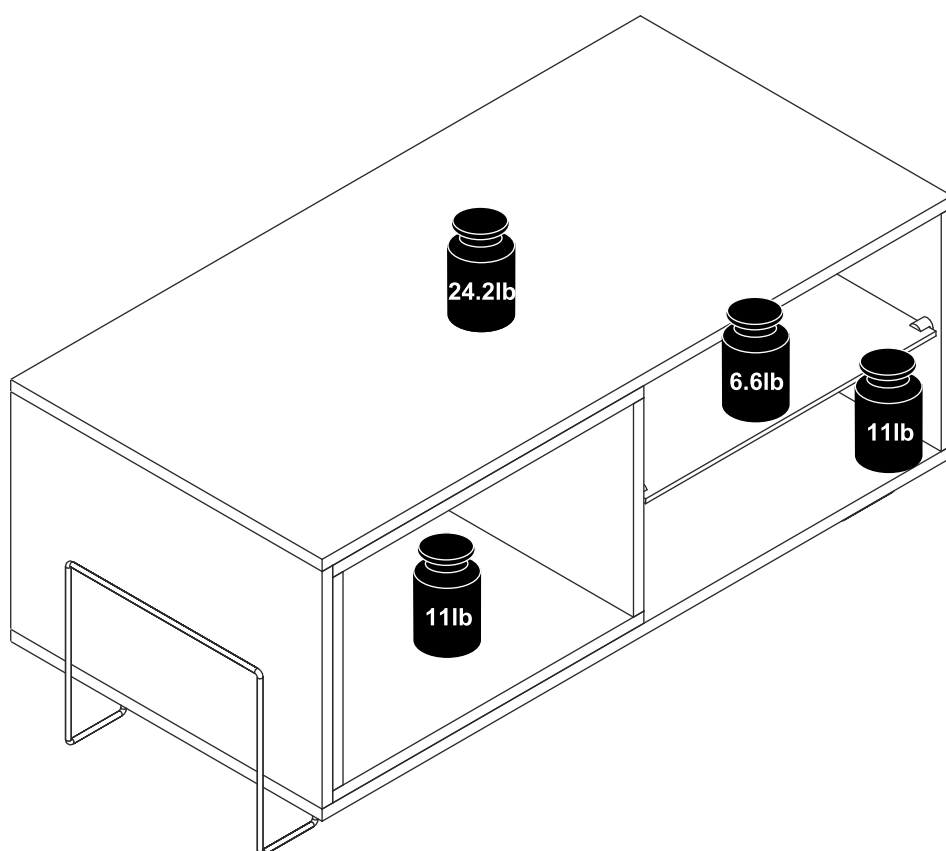


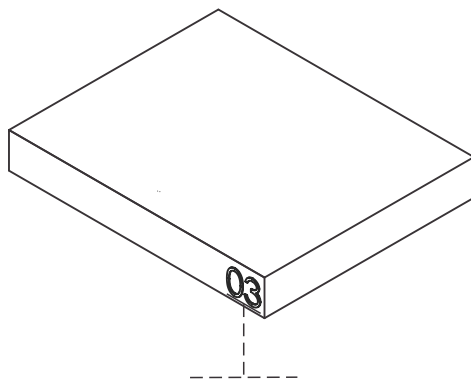
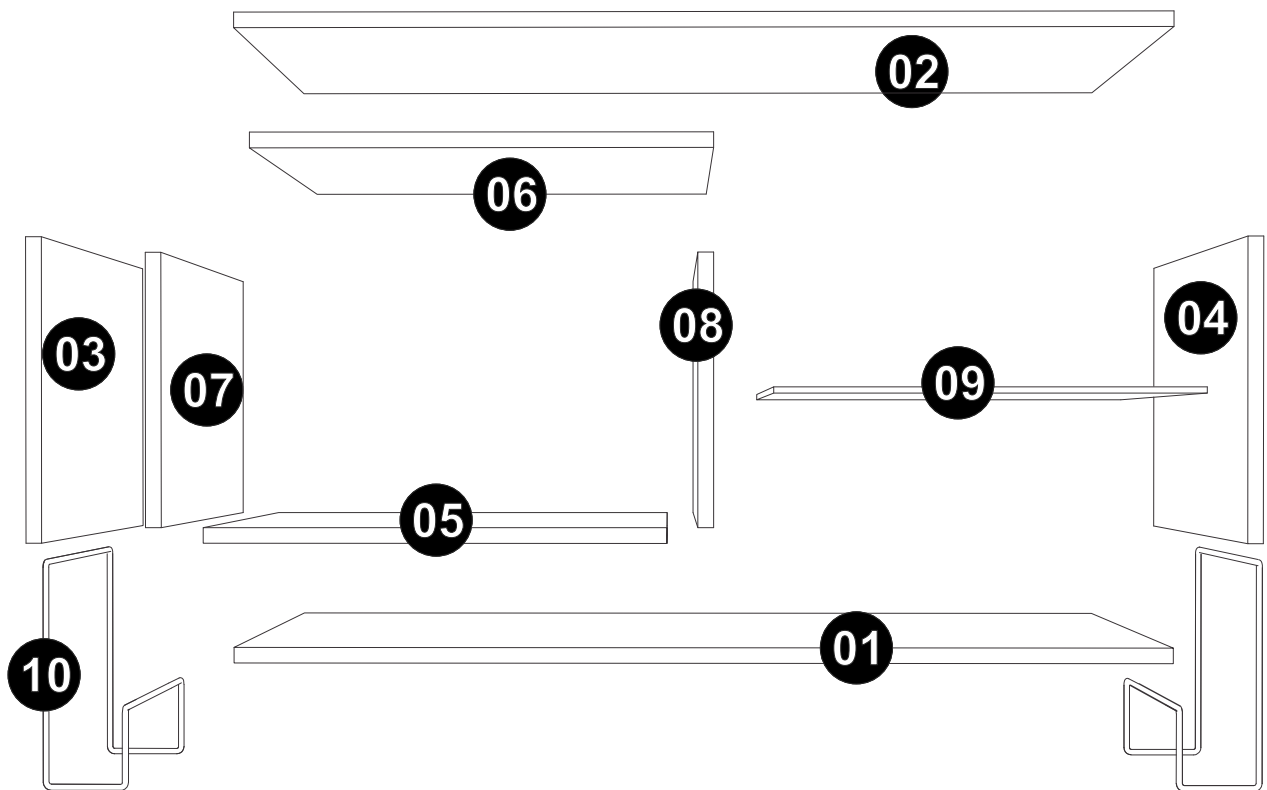
Boden TV Sand

Model: 98AMC128

Dimensions:

W: 35.43" H: 15.91" D: 17.52"



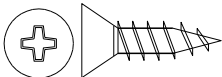
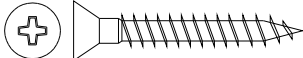

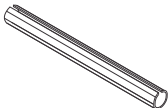
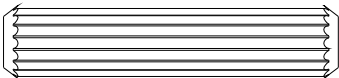



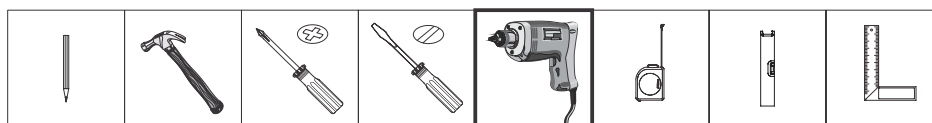


**USE ALCOHOL TO
REMOVE PART
NUMBERS**

PART	DESCRIPTION	QTY.
01	Base	01
02	Top	01
03	Left Side	01
04	Right Side	01
05	Cube Base	01
06	Cube Top	01
07	Cube Left Side	01
08	Cube Right Side	01
09	Glass Shelf	01
10	Feet	02

HARDWARE PARTS

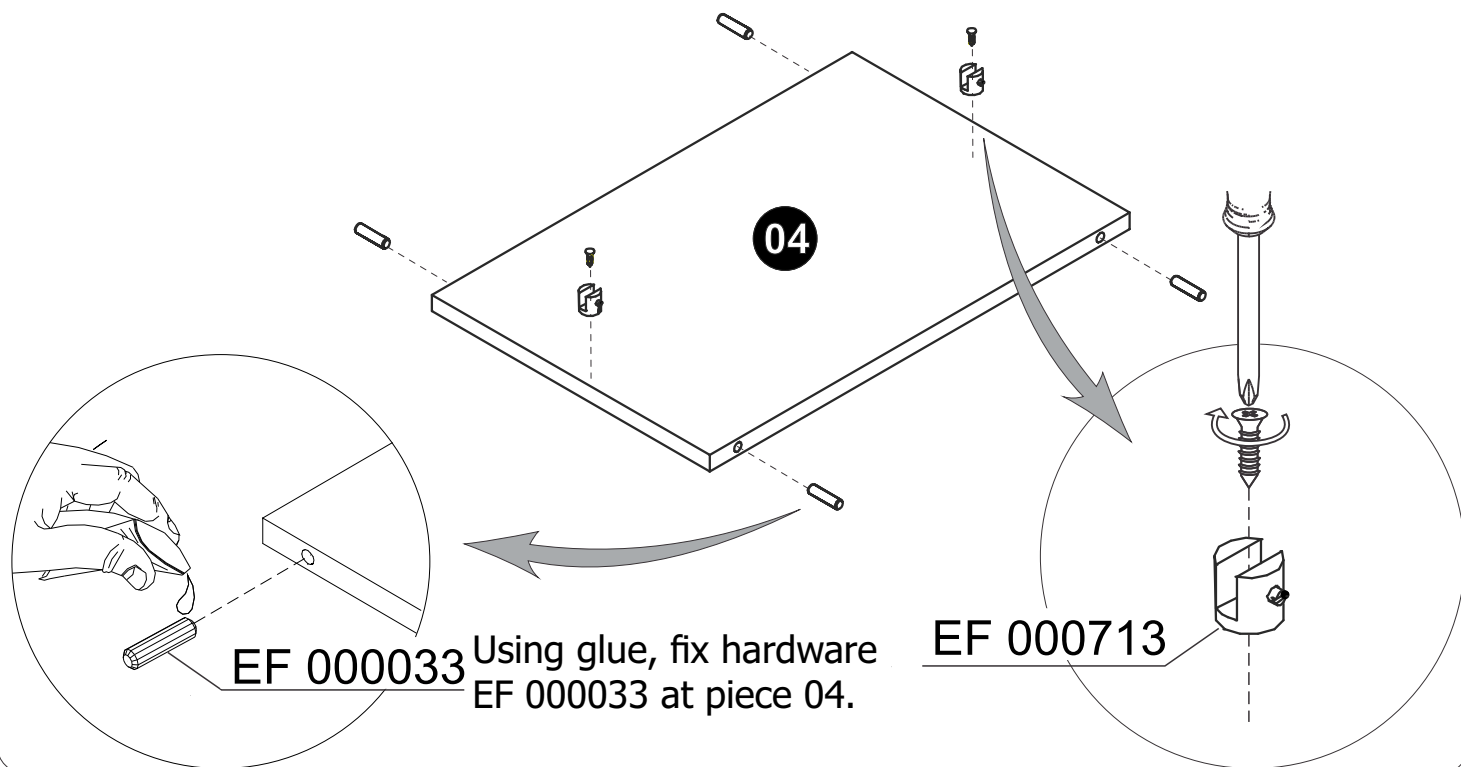
PHOTO	CODE	QTY.
	EF 000033	14
	EF 000139	06
	EF 000107	04
	EF 000125	02
	EF 000008	02
	EF 000688	04
	EF 000696	02
	EF 000713	04



**TO IMPROVE ASSEMBLY, USE AN
ELECTRONIC SCREWDRIVER**

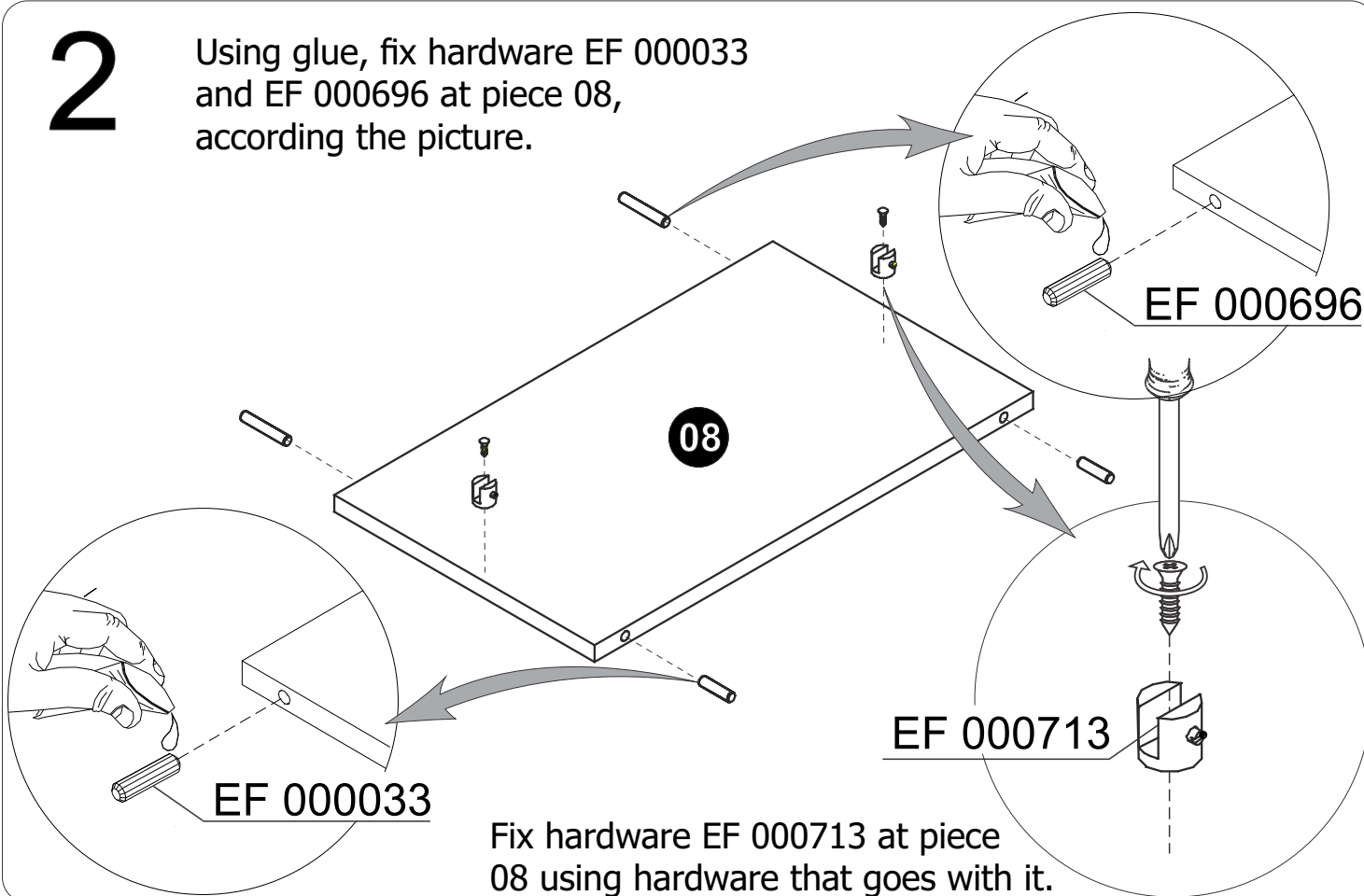
1

Fix hardware EF 000713 at piece 04 using hardware that goes with it.



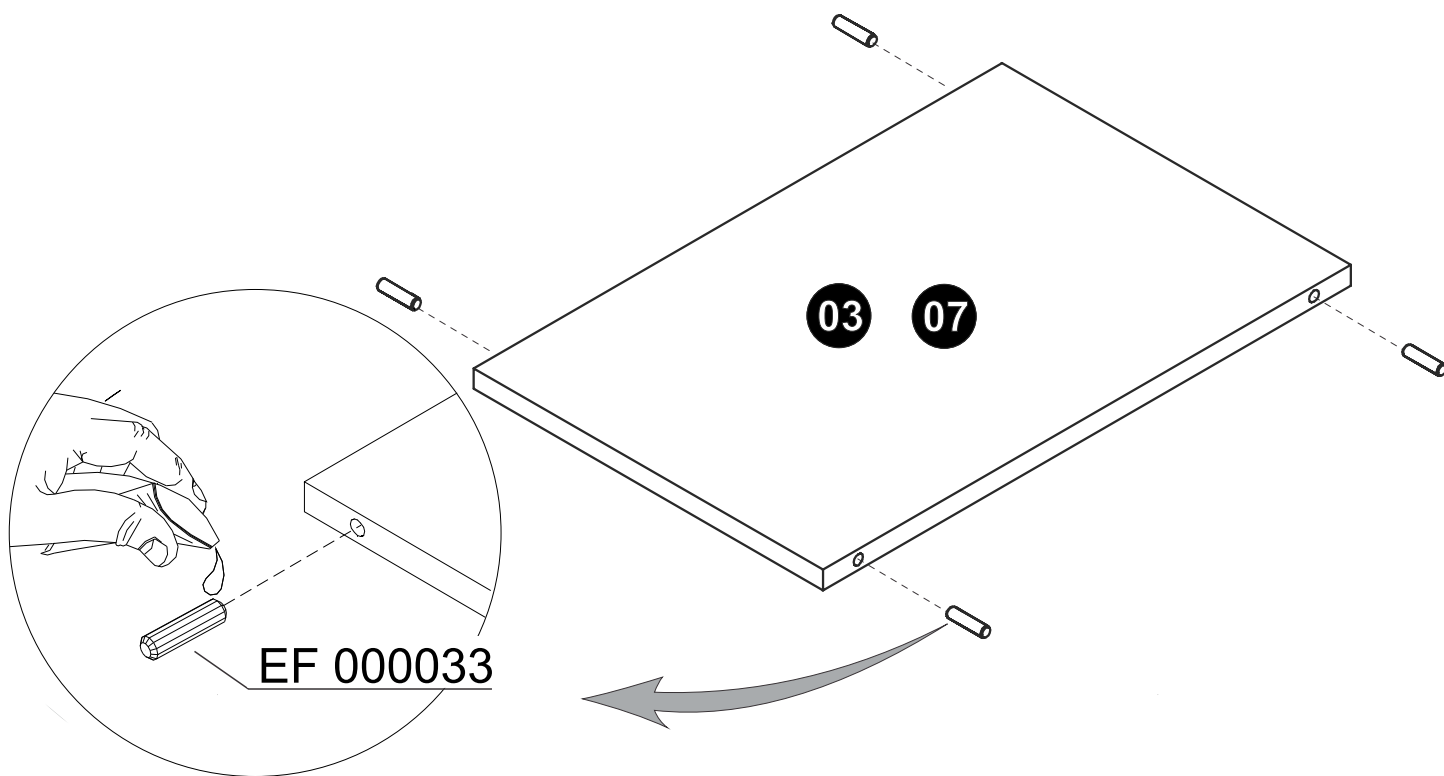
2

Using glue, fix hardware EF 000033 and EF 000696 at piece 08, according the picture.



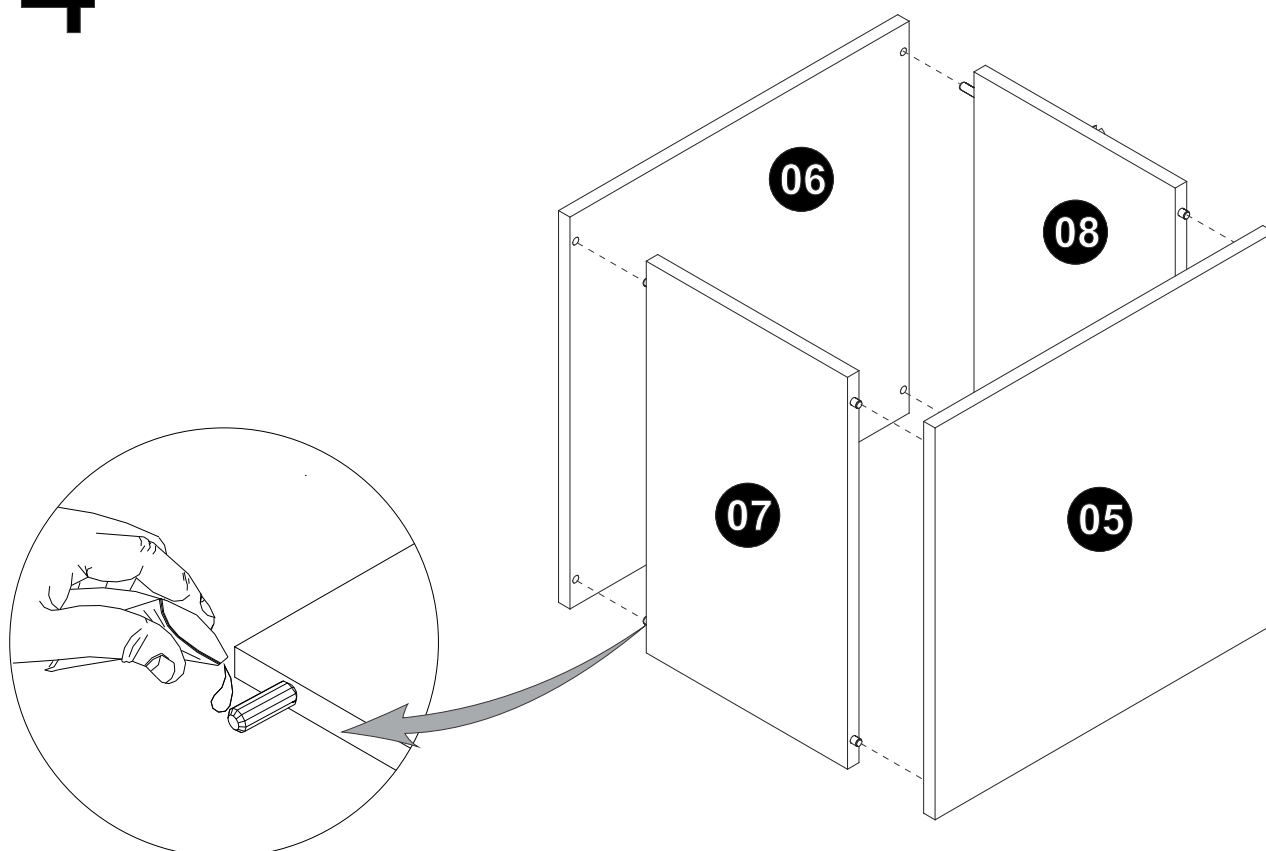
3

Using glue, fix hardware EF 000033 at pieces 03 and 07.



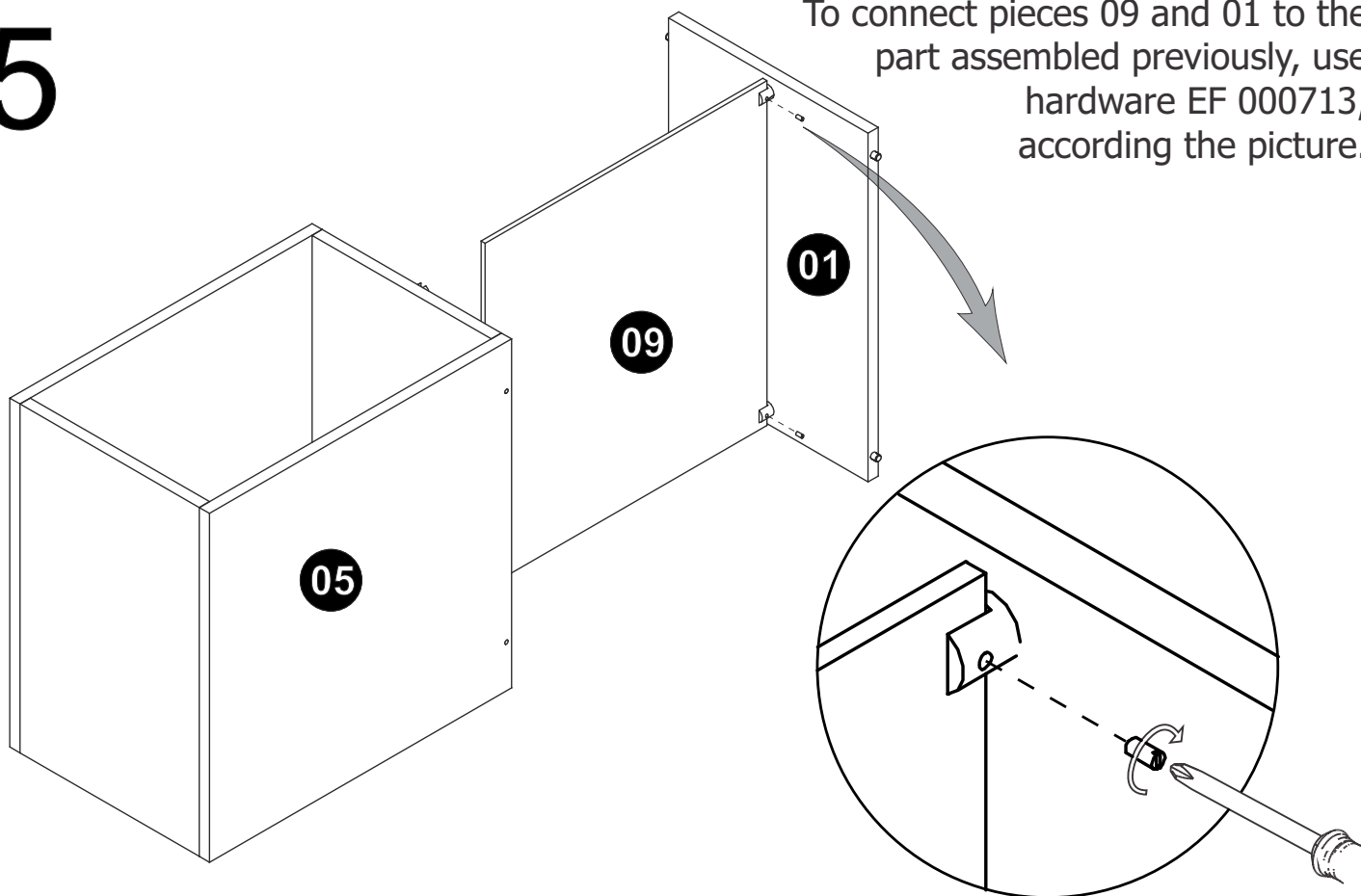
4

Using glue, connect pieces 05, 06, 07 and 08.



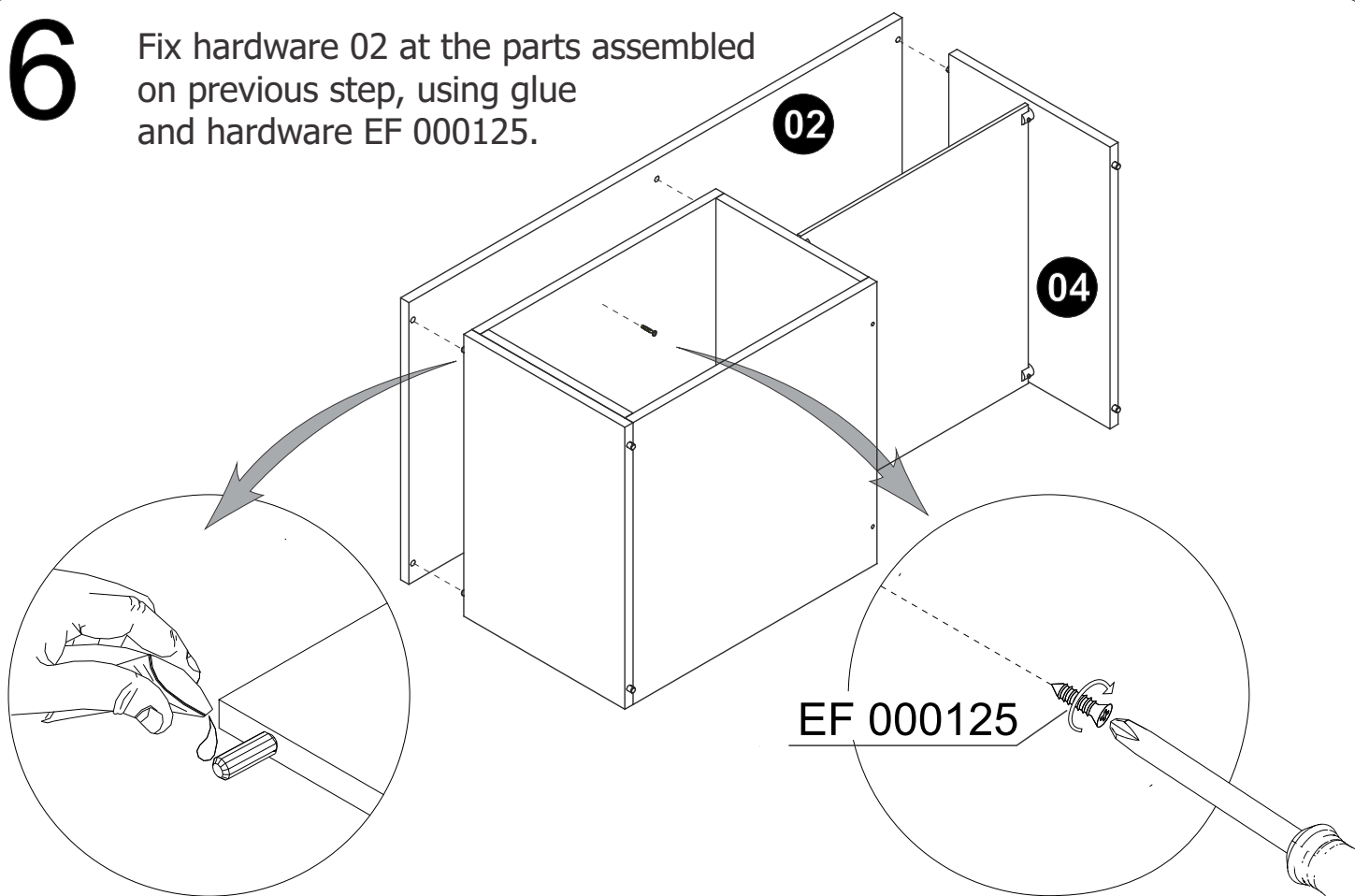
5

To connect pieces 09 and 01 to the part assembled previously, use hardware EF 000713, according the picture.



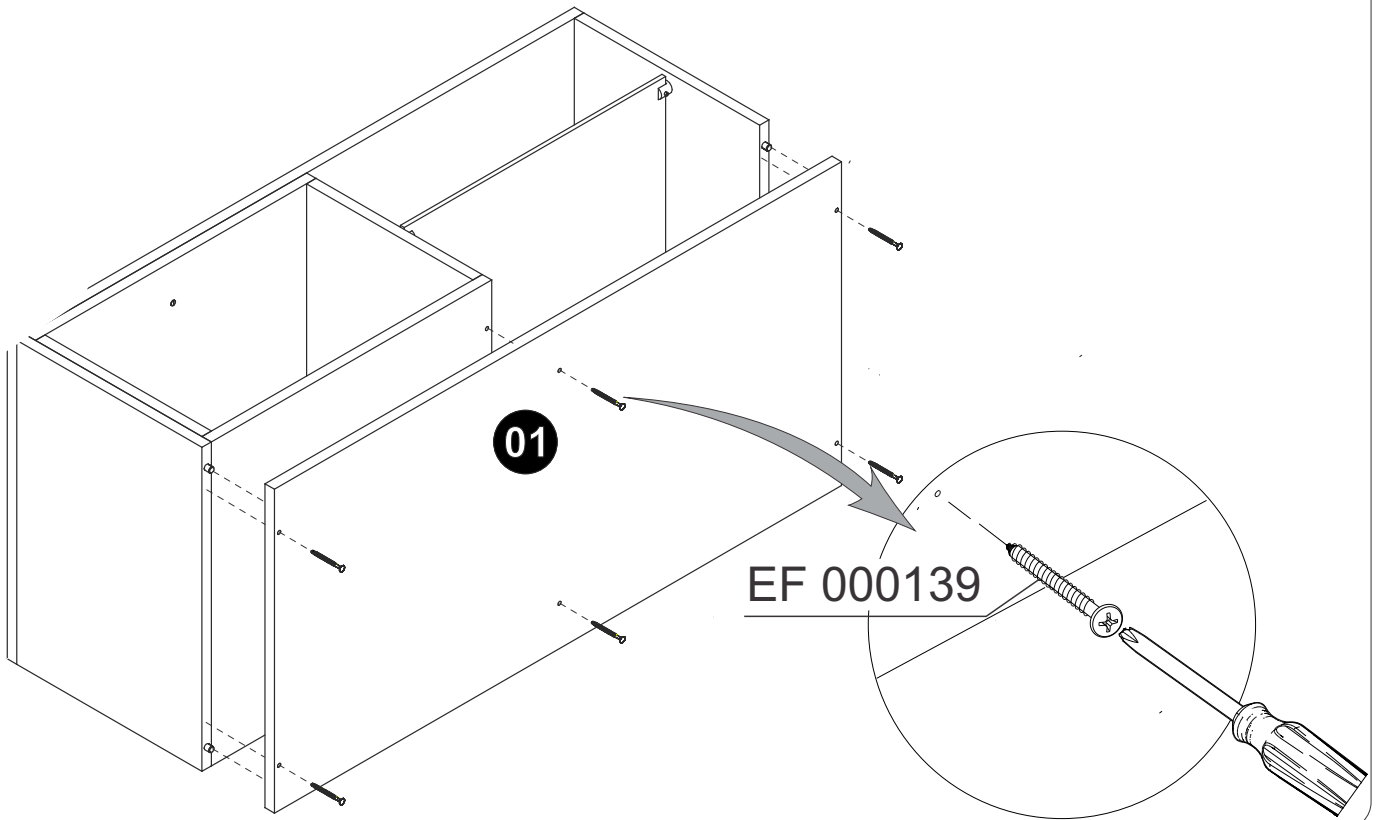
6

Fix hardware 02 at the parts assembled on previous step, using glue and hardware EF 000125.



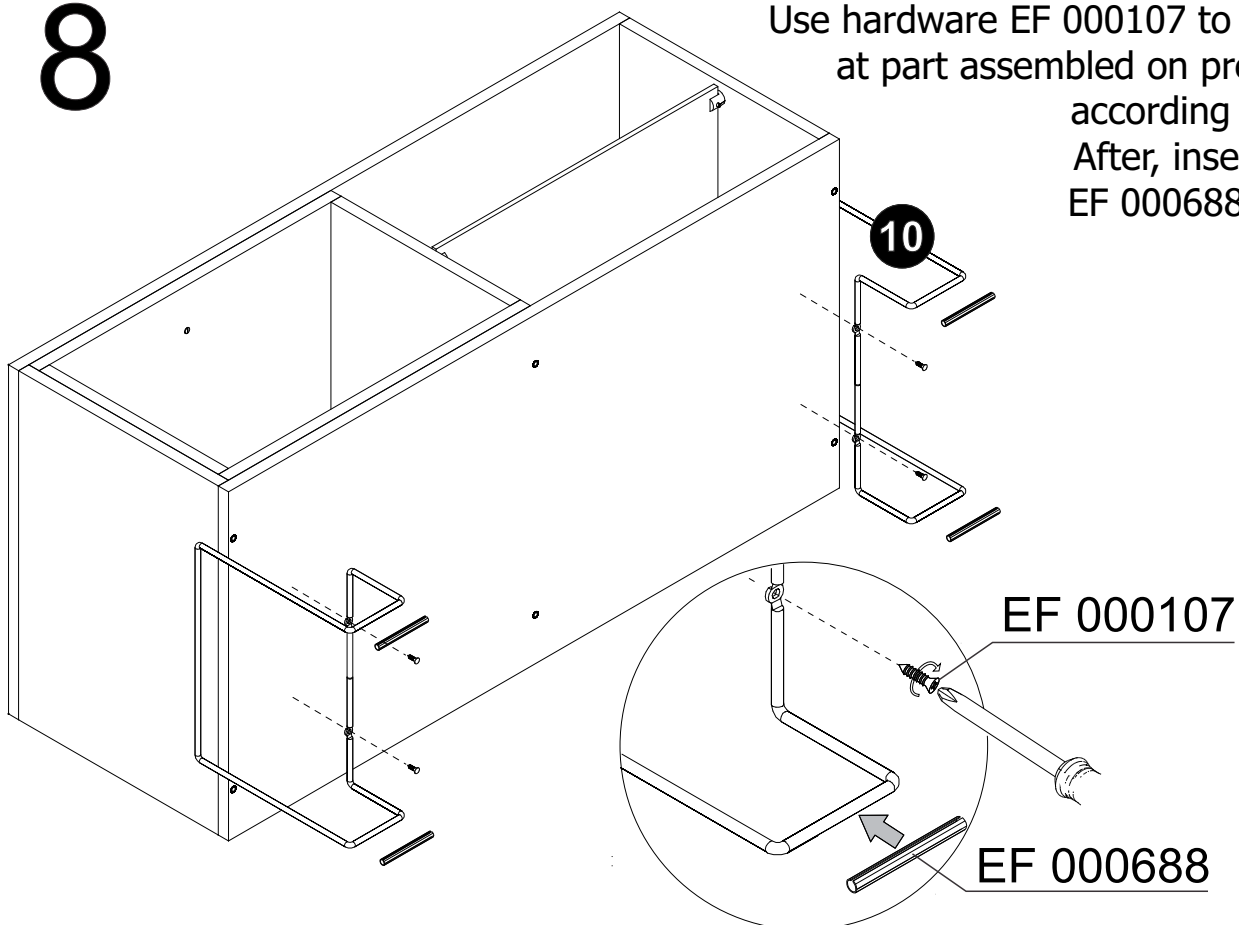
7

Use hardware EF 000139 to fix piece 01 at part assembled on previous step.

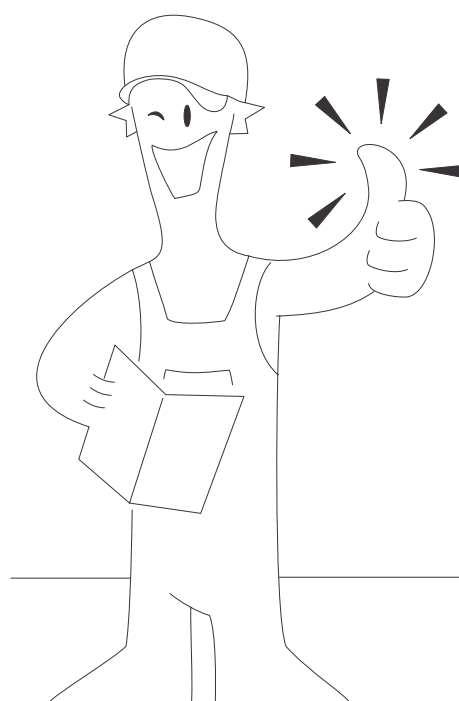
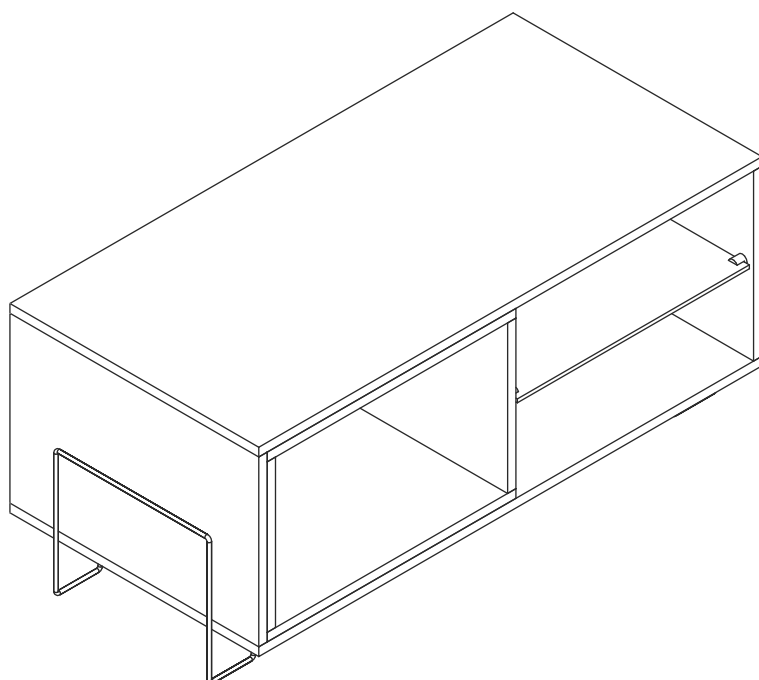


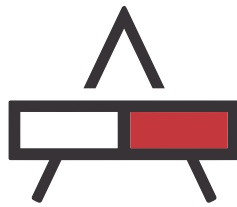
8

Use hardware EF 000107 to fix piece 10 at part assembled on previous step, according the picture. After, insert hardware EF 000688 to finish it.



To ensure the fixing, let dry for **8 hours**.





ACCENTUATIONS

by MANHATTAN COMFORT