

How to reformat my Simple Music Player

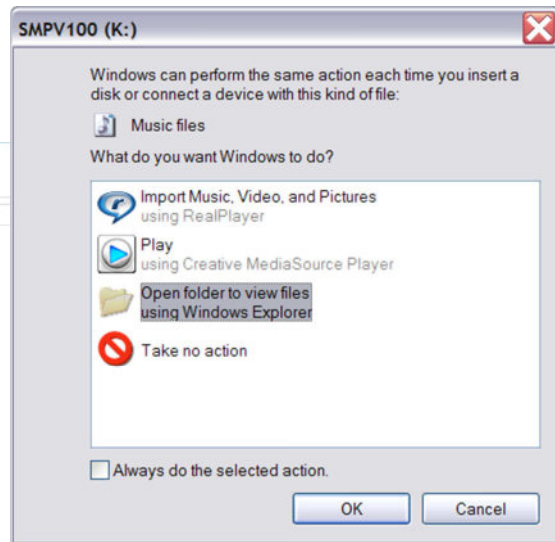
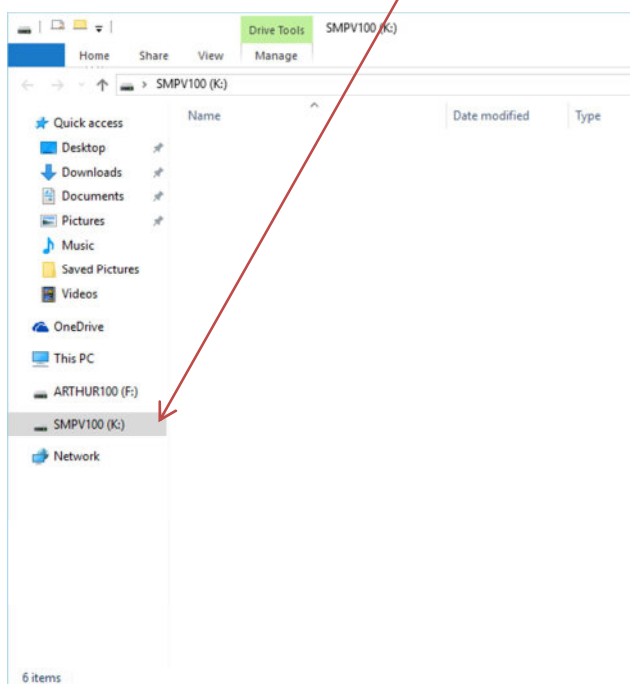
Reformatting your player completely wipes off all music files so the memory is completely blank.

What you can't do is affect the way the Simple Music Player works by uploading tunes or reformatting; it has its own unique memory which you have no access to, and is physically separate. Consequently if it worked before you reformatted, then it should work again, once we've restored it.

For Microsoft Windows users

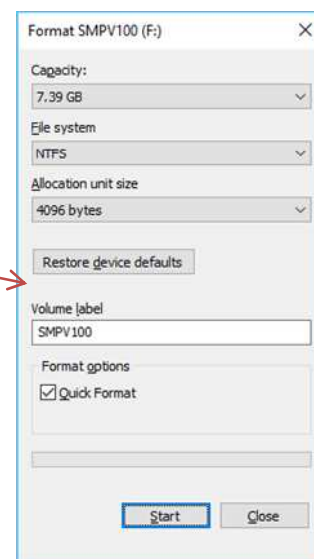
Power down the player. Plug in your USB cable to the player and computer. Switch the power on and you will get a device found message such as:

Or it will simply appear in your device list.



Either way, you should be able to see a device which appears as SMPV100 (unless you've changed the name) regardless of how it was formatted.

What we now need to do is reformat it with a compatible system. So point to the device and right click. Then select 'Format' from the drop down list. Click, and you will get a pop-up box like this:

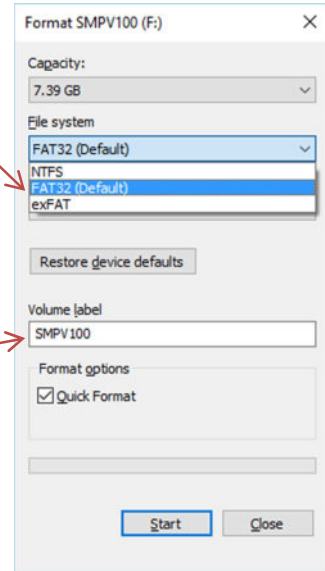


Now select the correct 'File System' from the drop-down list which has to be FAT32.

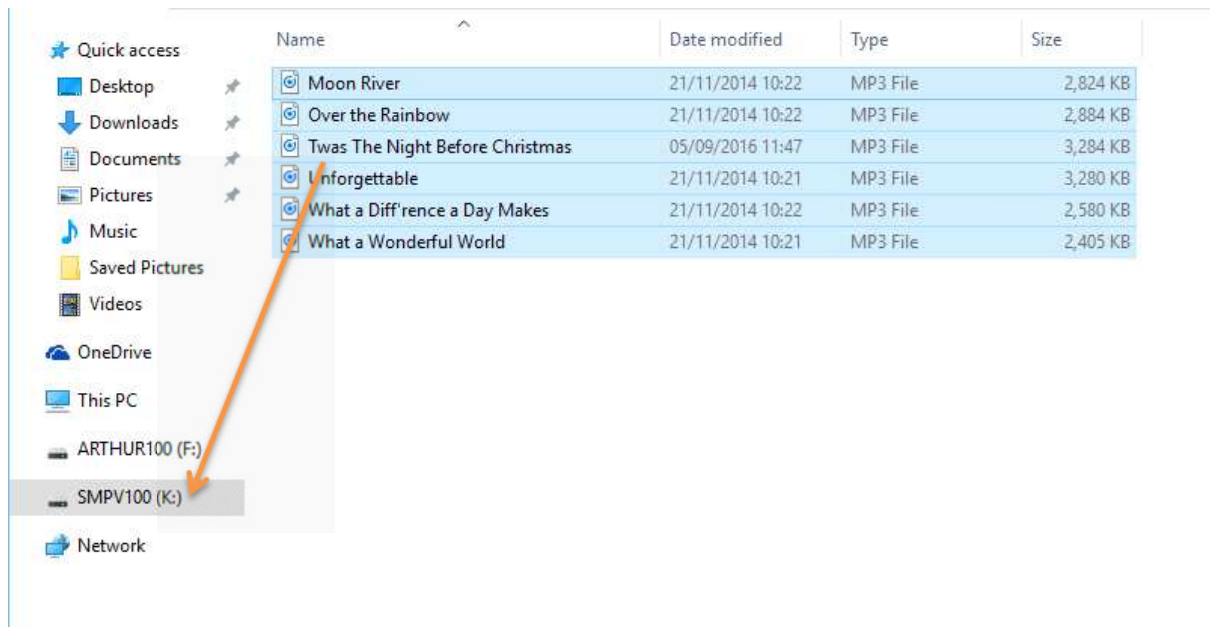
If you select 'NTFS' or 'exFAT' it will not work.

You can change the name of the Player by typing a new one in the box marked 'Volume Label' if you wish, or just leave it alone.

Then press start and the format process will complete.



Once done, simply 'drag and drop' or 'cut and paste' your selected files across to the player.



Power down the player. Remove the USB cable to the player and computer. Switch the power on and your tunes should play.