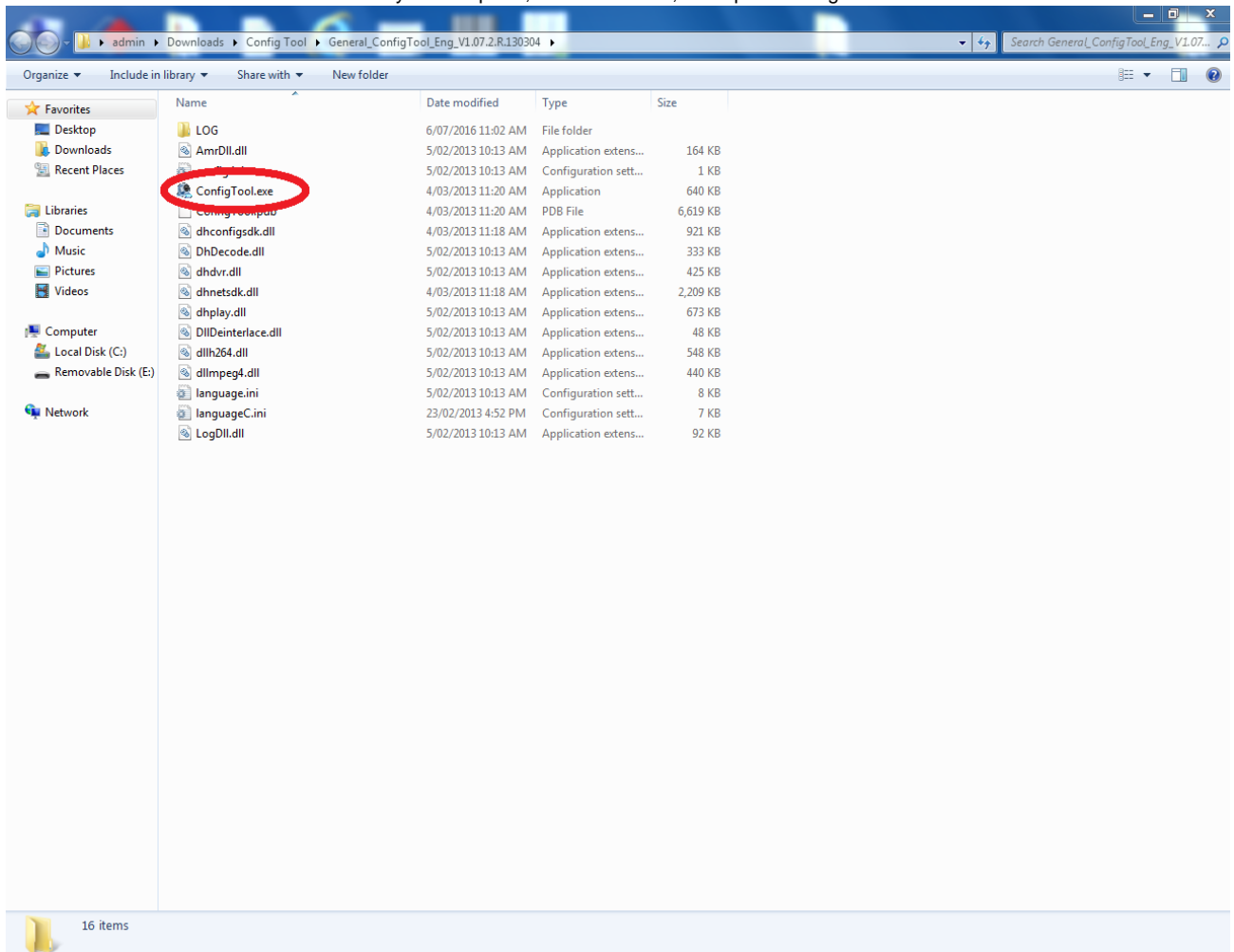


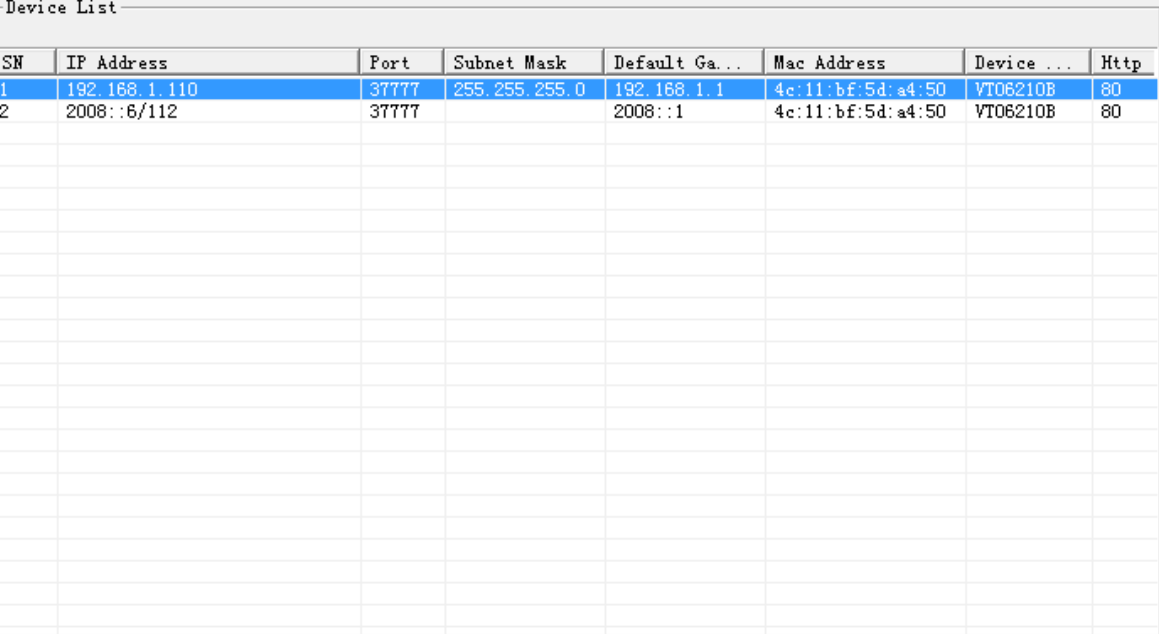
Upgrading Intercom Firmware.

The below instructions cover how to update firmware on the VIP Vision Intercom Door Station and Indoor Monitor.

1. Download and Install the Config Tool from our website. - http://downloads.rhinoco.com.au/dvr/Dahua/Config_Tool.zip
2. Download the latest firmware for the Intercom Door Station, and Indoor Monitor.
3. Once the software has been downloaded to your computer, extract the files, and open "Configtool.exe".



4. Once the software is open, press the "Login" button.

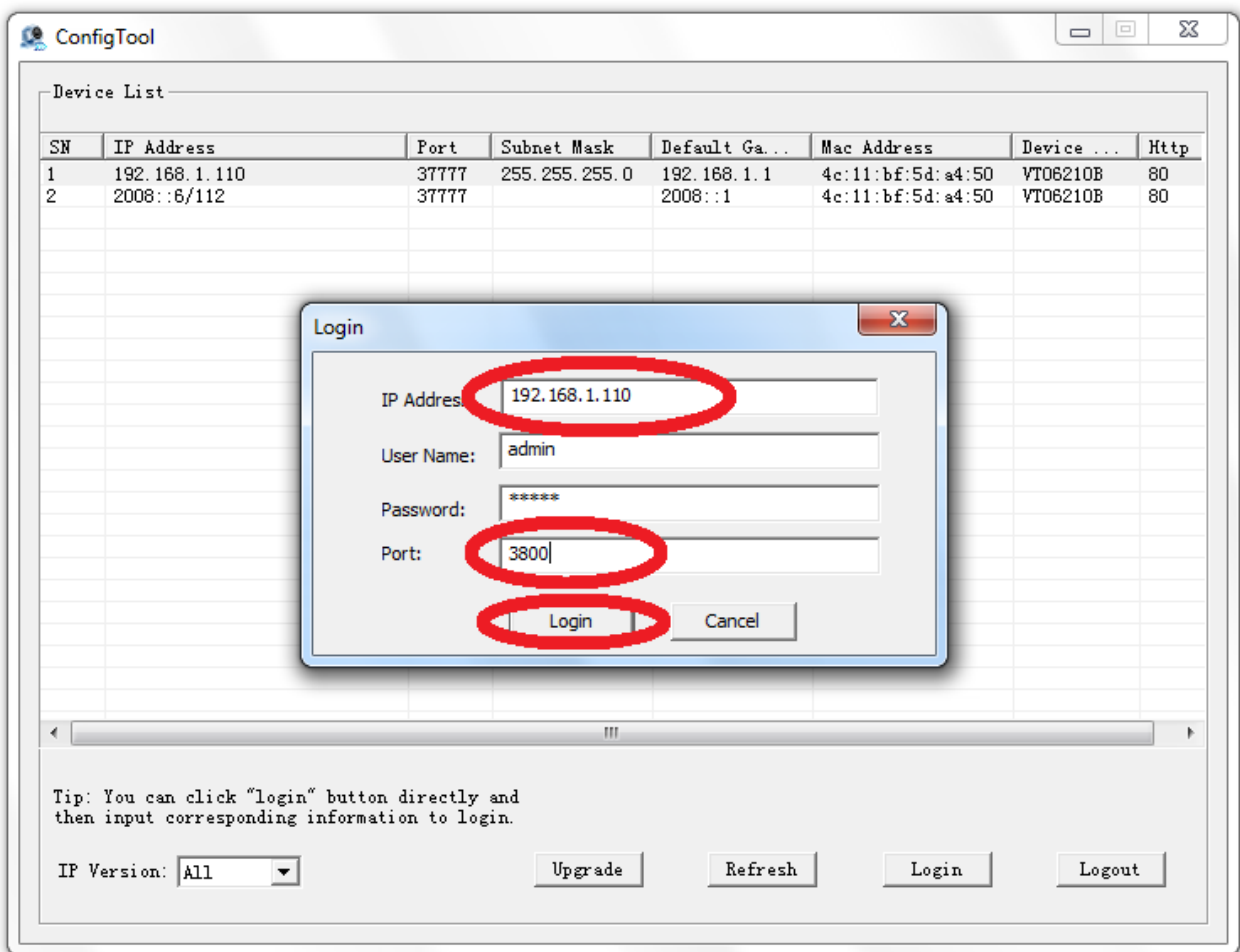


IP Version: All

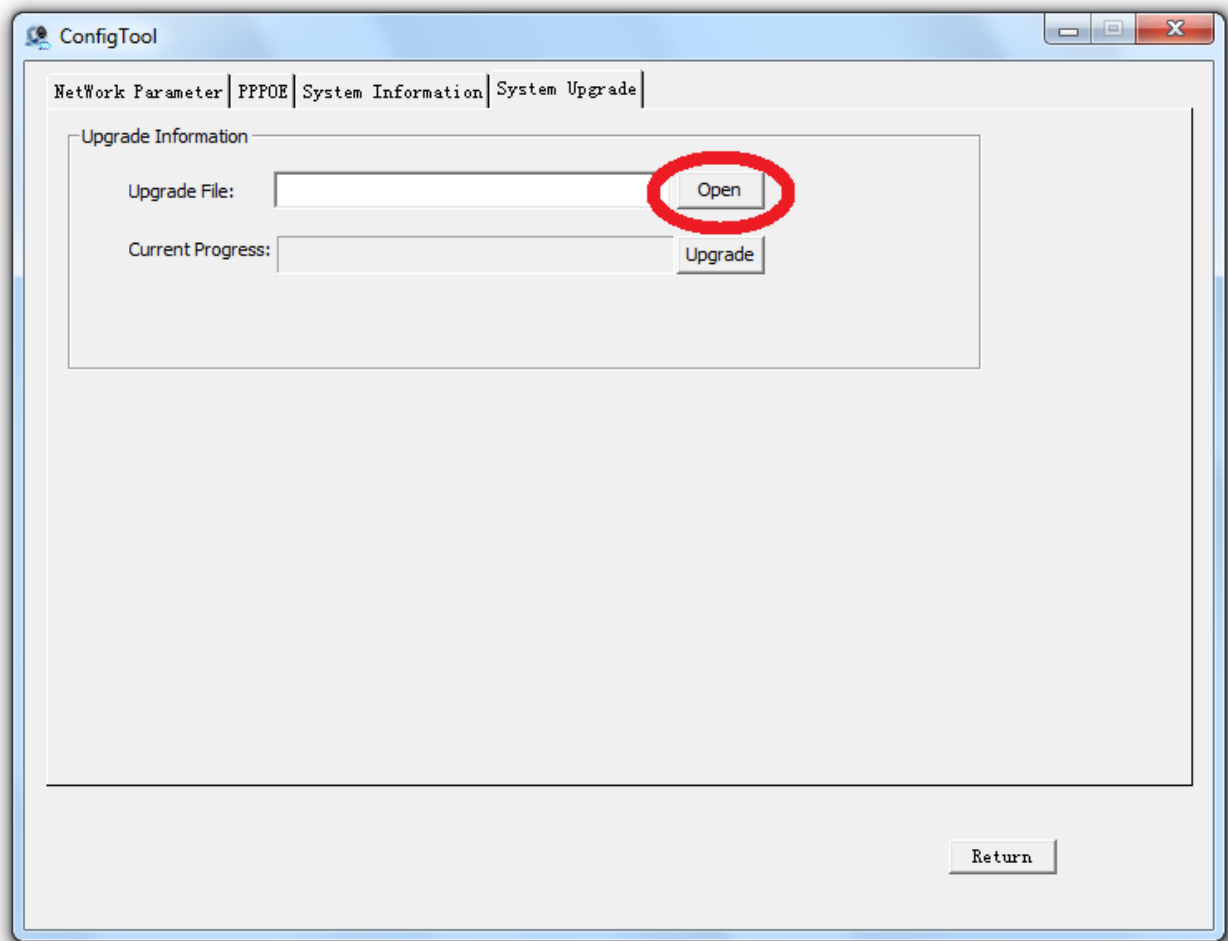
Refresh

[Logout](#)

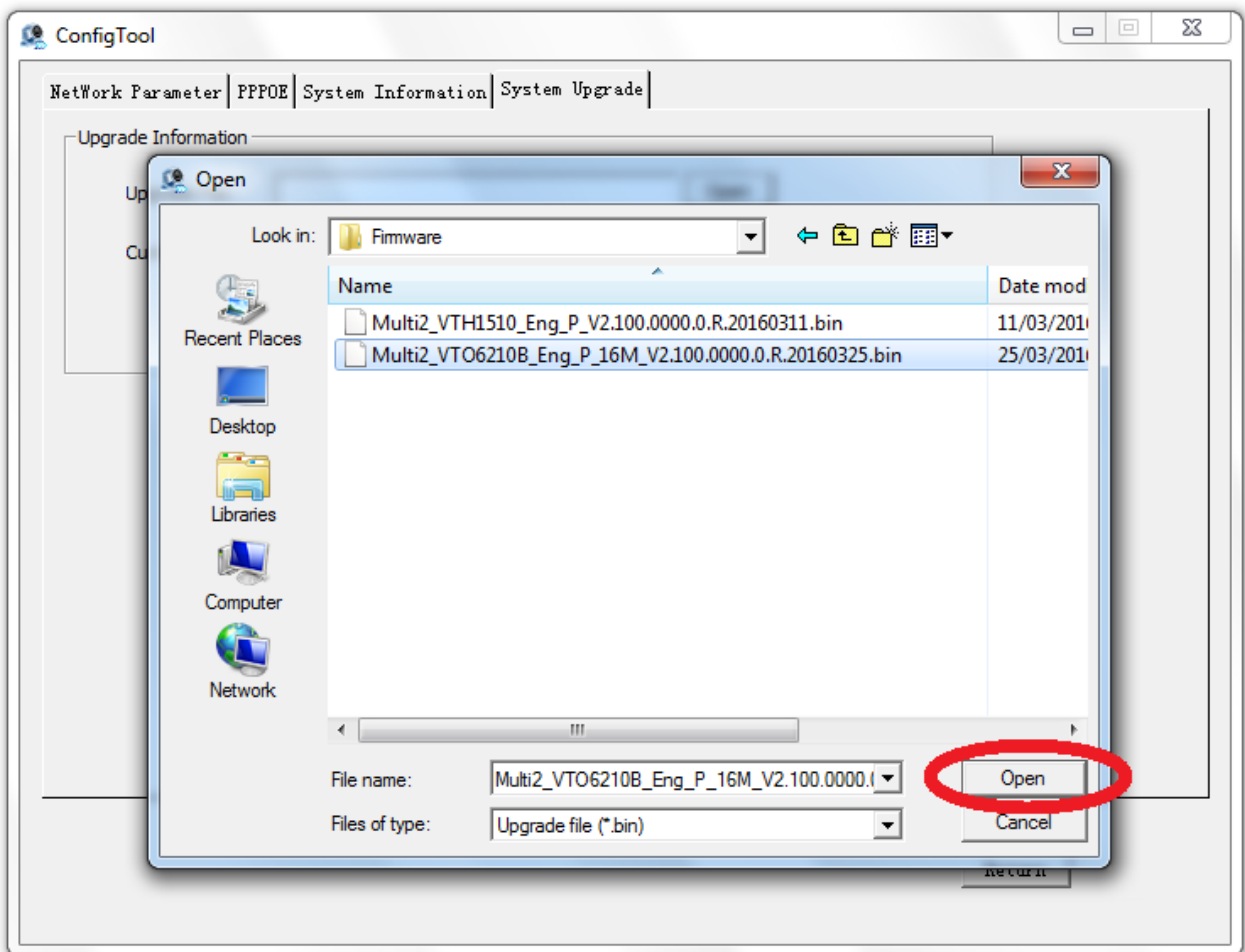
5. Enter the IP address of the Door Station, by default it is 192.168.1.110.
Change the port number to "3800".
Press the "Login" button,



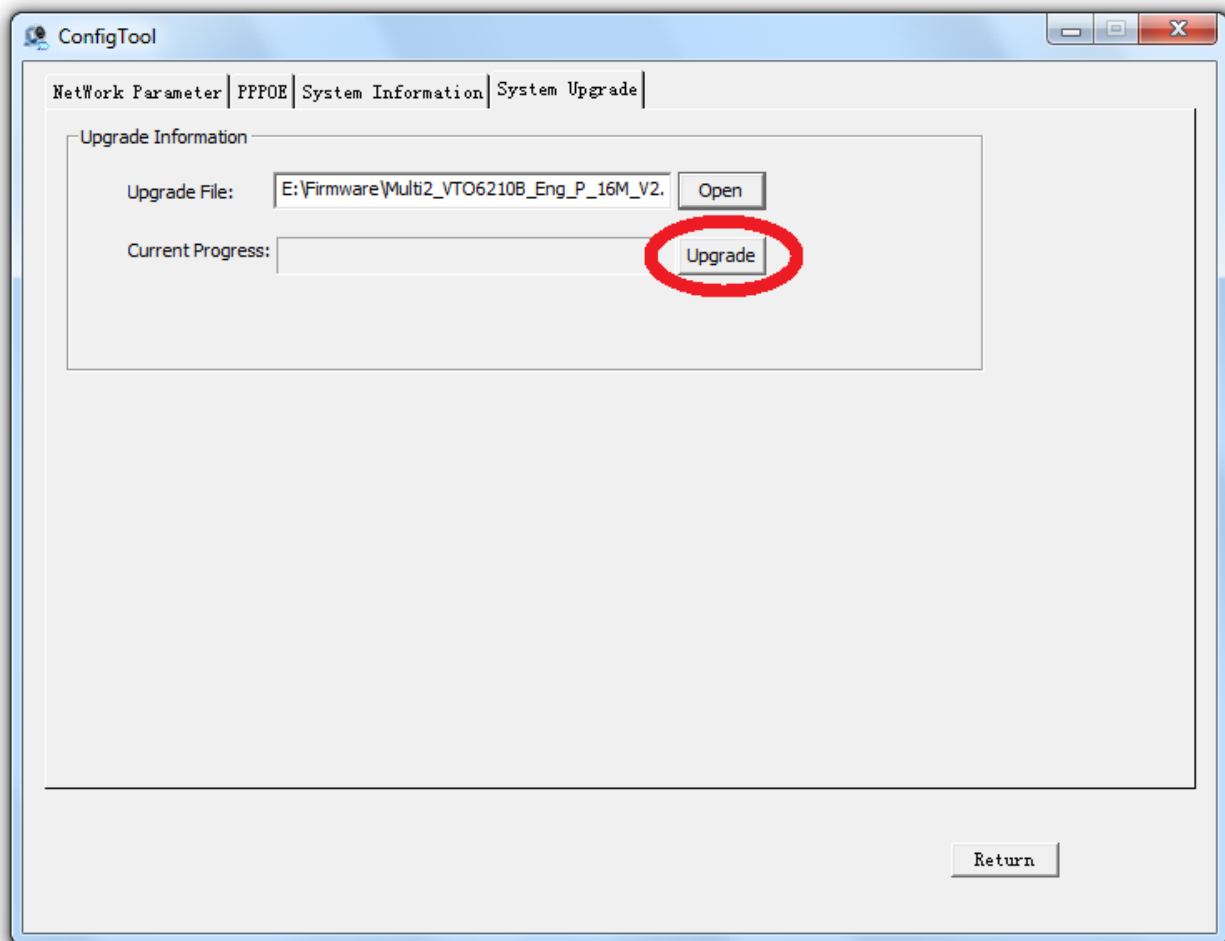
6. Select the "Open" button and locate the firmware file for the Door Station that you previously downloaded.



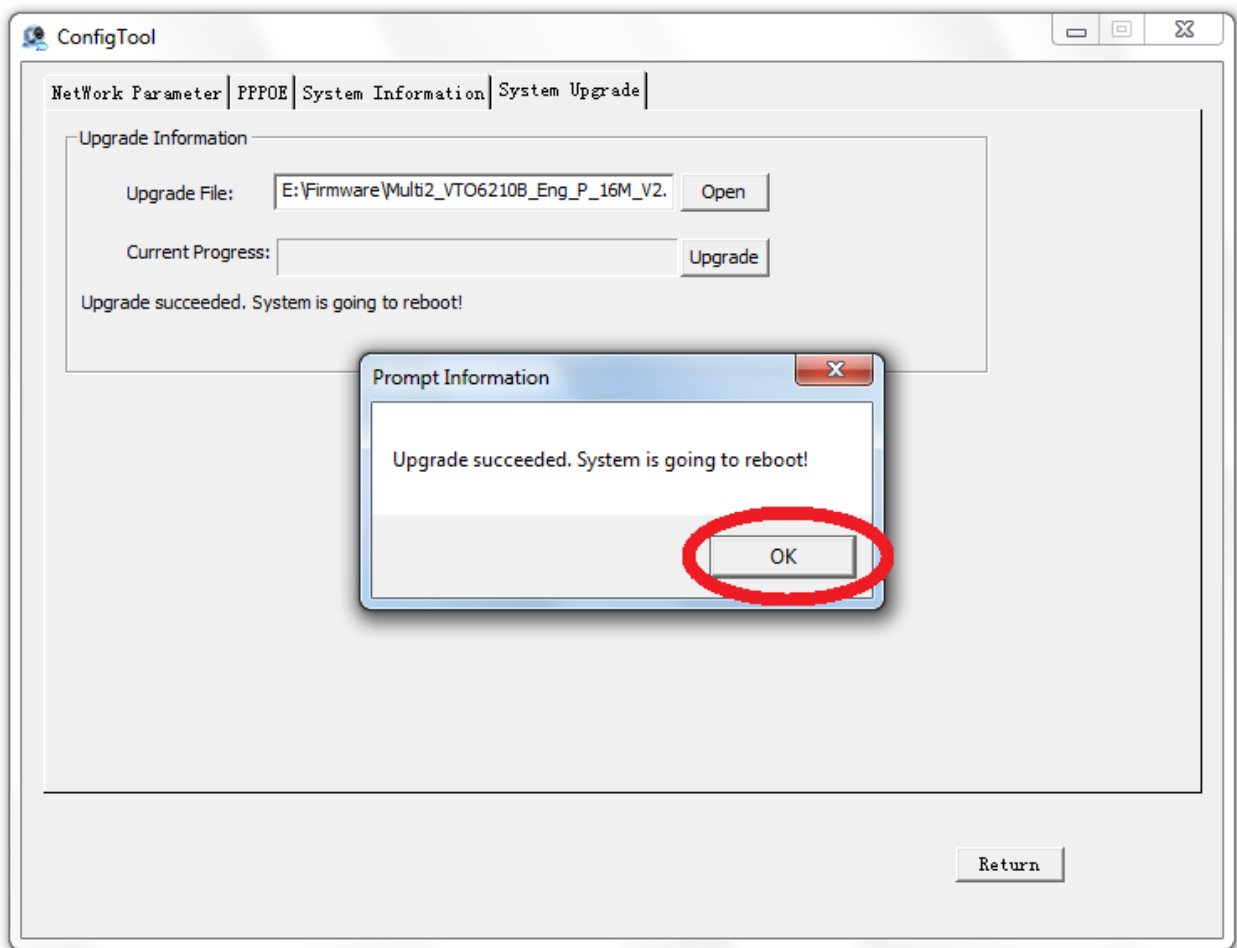
7. Once the firmware has been selected, press the "Open" button.



8. Select the "Upgrade" button to begin the upgrade.
Please wait while the firmware is being updated, do not close the ConfigTool, or unplug the computer or Door Station from the network, as this may cause damage to your device.



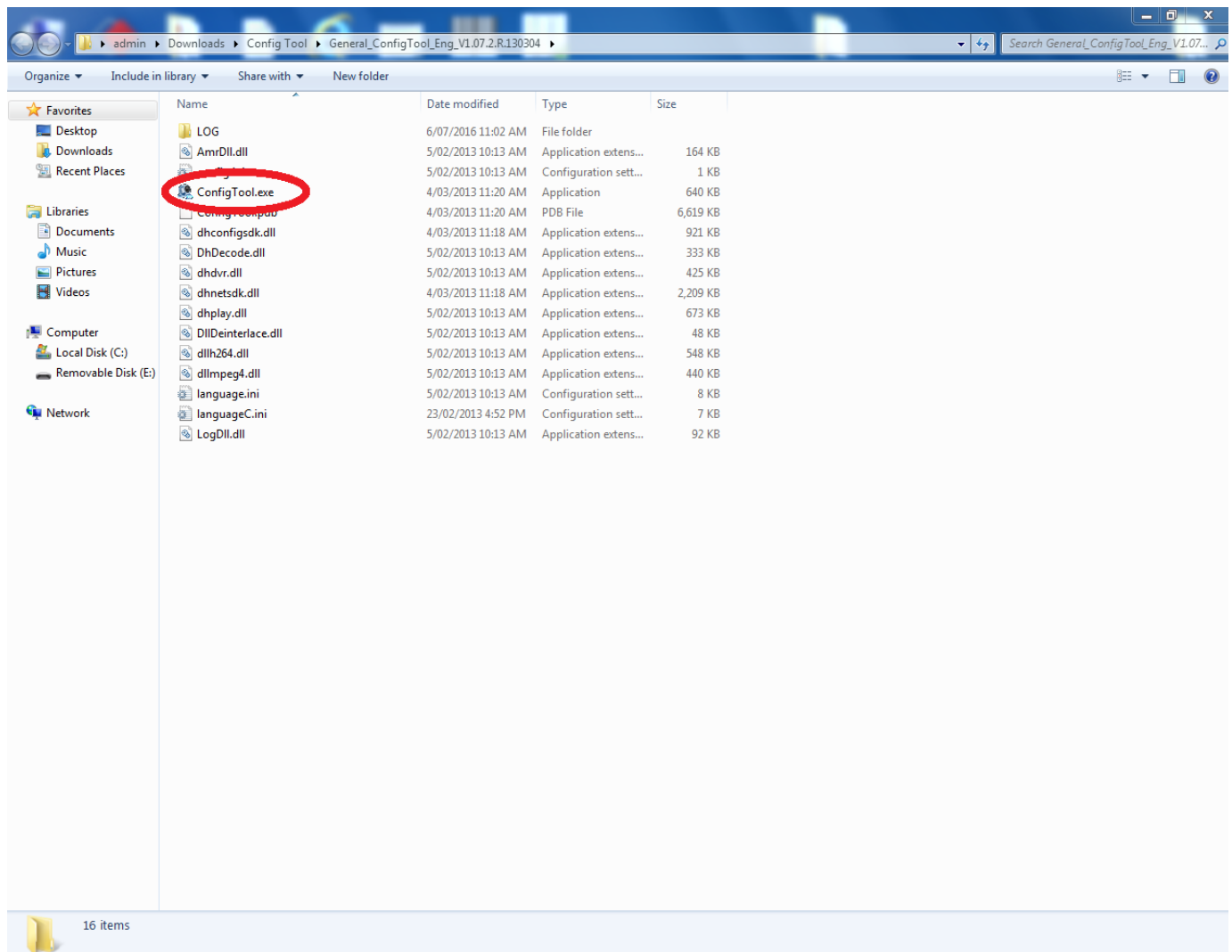
9. Once the upgrade is complete, select the "OK" button.



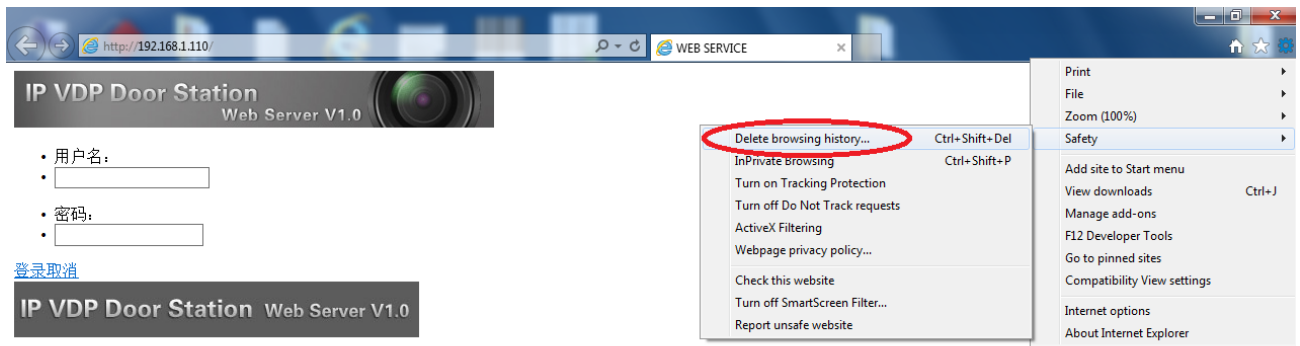
10. Your door station has now been upgraded.
11. To upgrade the Indoor Monitor, the same steps are followed, but you must enter the IP address of the Indoor Monitor. By default the IP address is 192.168.1.109.
Port 3800 is to be used, and the correct firmware for the Indoor Monitor must be selected.

Notes:

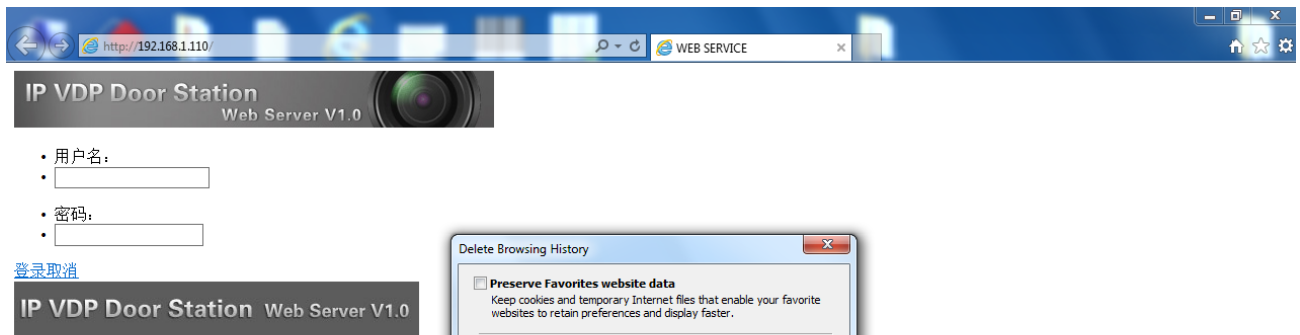
After upgrading the firmware, if you are unable to login to the Door Station and are presented with the screen below, please follow the below steps.



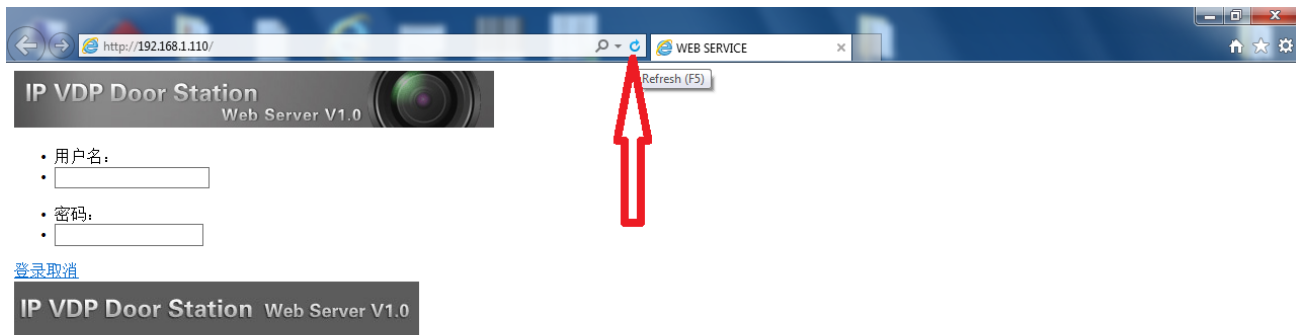
1. Open the settings tab, then go to "Safety" then "Delete Browsing History"



2. Select the "Delete" button.



3. Once you have deleted your browsing history, press the "Refresh" button at the top of the page.



4. You will now be able to login to the Door Station. The default username is "admin" and the password is "admin".

