



## Electric Cable Drum Auger

# Operation Manual

1/4in. x 50ft.



**HDS#125011**

**WARNING** - Read all instructions. When using electric tools basic safety precautions should always be followed to reduce risk of fire, electric shock and personal injury.

**Save These Instructions**

**WARNING:** This product can expose you to chemicals including lead, which is known to the State of California to cause cancer, and DEHP, which is known to the State of California to cause birth defects or other reproductive harm. For more information go to [www.P65Warnings.ca.gov](http://www.P65Warnings.ca.gov)

# Table of Contents

Machine and Safety Information .....	Page 3
Operating Instructions .....	Page 4
Machine Maintenance .....	Page 5
Machine Diagram .....	Page 6
Parts List .....	Page 7

## **WORK AREA**

**ALWAYS** keep your work area clean and well lit.

**DO NOT** operate power tools in the presence of flammable liquids, gases, or dust.

**ALWAYS** keep children and bystanders away from work area.

**AVOID** distractions while using the machine.

## **ELECTRIC SAFETY**

**ALWAYS** plug tool into a properly installed outlet.

**AVOID** contact with other surfaces that could result in electronic shock.

**ALWAYS** use the machine in dry environment. If any moisture is present use a ground fault circuit interrupter(GFCI).

**DO NOT** use if cord is frayed, split, or damaged.

**ALWAYS** use a proper extension cord rated for outdoor use.

## **PERSONAL SAFETY**

**ALWAYS** dress properly for the work being done.

**ALWAYS** make sure the switch is in the OFF position before plugging into an outlet.

**ALWAYS** adjust machine when in OFF position and unplugged.

**ALWAYS** maintain balance at all times to avoid injury.

**DO NOT** operate while fatigued or under the influence of drugs, alcohol or medication.

**ALWAYS** lift with your knees when moving heavy objects.

**ALWAYS** wear protective eyewear.

## **TOOL USE AND CARE**

**ALWAYS** use the proper tool for your application.

**NEVER** force the tool when using.

**ALWAYS** make adjustments when the machine is unplugged.

**ALWAYS** confirm machine is not damaged and in good working order before use.

**ALWAYS** remove adjusting key or tools before use.

**ALWAYS** store tools in safe location away from children.

**ALWAYS** use the correct accesories and keep tool sharp for better results.

## **MACHINE SAFETY**

**ALWAYS** select the right tool for the job.

**DESIGNED** for use in sinks, tubs, floor drains, and roof stacks.

**DO NOT** attempt to clear tree roots from pipes.

**DO NOT** modify tool, improper use could result in serious injury.

## **SERVICE**

**ALWAYS** service tool by qualified service technician.

# **OPERATING INSTRUCTIONS**

**NOTE: Wear the following appropriate protective equipment**

- **ANSI approved splash resistant safety goggles and respirator under face shield**
- **Liquid barrier gloves under heavy duty LEATHER work gloves**
- **Rubber soled, non-slip shoes to help prevent slipping and electric shock**

1. Position machine within 2 feet of the drain.
2. Loosen the thumbscrew.
3. Pull cable out of the drum and place the end of the cable into the drain.
4. Continue to feed the cable into the drain outlet until the blockage is reached.
5. Attach the air foot switch to the air press box.
6. Attach the drill motor cord to the press box.
7. Place the drill motor switch in the (FOR) position and depress the foot pedal.  
(NOTE: DO NOT operate the machine in the reverse (REV) position) .
8. Continue to feed the cable into the drain outlet.

**NOTE:** Cable may encounter change in drain line or build up of debris. To clear obstruction, gradually move cable back and forth. If cable still does not move, then release the foot switch and give a firm push to the cable back and forth.

**9. Cable may start to wind up or twist when the blockage is reached. When this happens do the following:**

- a. Put power level to "neutral" position
- b. Release tension and slightly pull back on the cable to get tool turning again
- c. Slowly feed cable back into the blockage
- d. Continue to feed cable until the blockage is removed.

10. Retrieve the cable by *manually* feeding it back into the drum. NOTE: DO NOT operate in REV position to retrieve cable.

**Clean the cable with cold water as it is being put away.**

11. Tighten the thumbscrew to avoid the cable becoming loose while stored.

## **TO REMOVEDRUM**



Figure 1

- Locate release hook immediately behind the drum Pull hook upward and pull drum forward to remove it from the spindle.(seeFig.1)
- TO REPLACE the drum, reverse the steps above.

## **INSTALLING REPLACEMENTCABLE**



Figure 2

- Loosen thumbscrew and remove the existing cable from the machine.
  - Uncoil the new cable completely. Carefully insert the cable into the drum and continue doing so until installation iscomplete.
  - Finally, tighten the thumbscrew. (see Fig.2)
- 

## **MACHINE MAINTENANCE**

### **Reverse Operation**

Machine should only be run in REV operations for a brief time and only to remove if cable is stuck.

### **Lubrication**

Grease all exposed and moving parts.

### **Storage**

The Machine should be kept in a dry, safe place, out of the reach of children.

### **Cables**

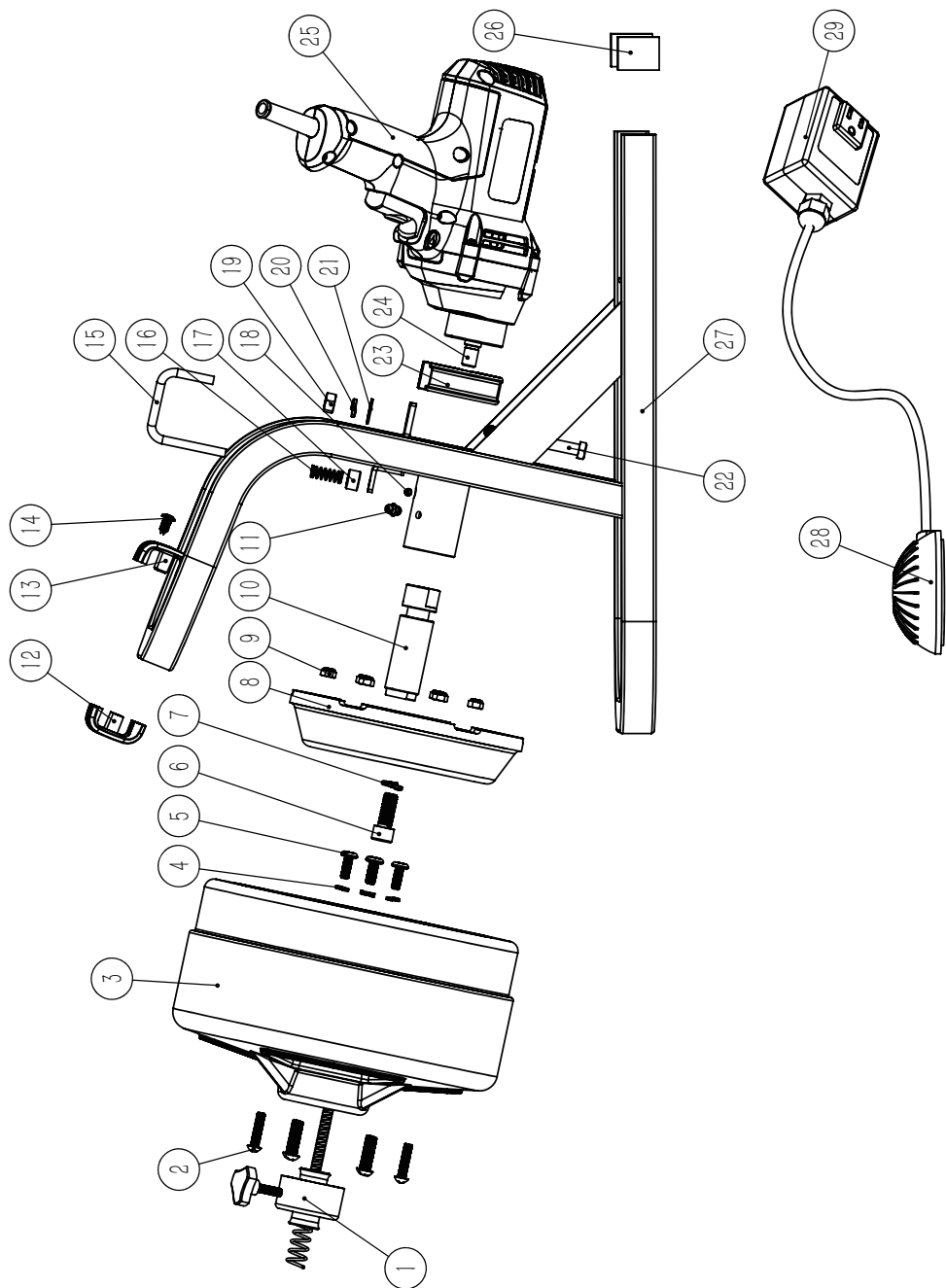
The cable should be thoroughly cleaned with water to prevent unpleasant odors and the damaging effects of drain cleaning solutions.

### **Cable Removal**

The cable is not attached to the drum. Pull the cable until it is fully removed.

### **Cable Replacement**

Bend the end of the cable at a 45 degree angle and then feed the cable into the drum.



REF#	DESCRIPTION
1	1/4"Nose Cone Assembly
2	Buttom head screw
3	Drum Assembly
4	Lock washer
5	Phillips Head Screw
6	Socket Head screw
7	Lock washer
8	Hub
9	Lock Nut
10	Drum Drive
11	Grease fitting
12	Plastic Handle Part
13	Plastic Handle Part
14	Tapping Screw
15	Lock Pin
16	Spring-Lock Pin
17	Spring Fixed Sleeve
18	Holding Screw
19	nut
20	Lock washer
21	Flat washer
22	Hex Screw
23	Drill Attach Collar
24	Motor Drive
25	Drill
26	End Cap
27	Frame Assembly
28	Air Actuated Foot Switch
29	Air Actuated Press Box

