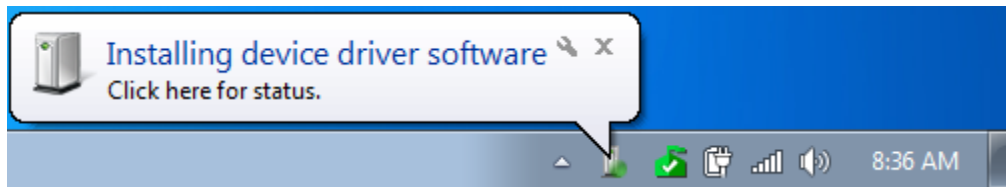


## Transmission Assistant Installation Guide (Windows 7)

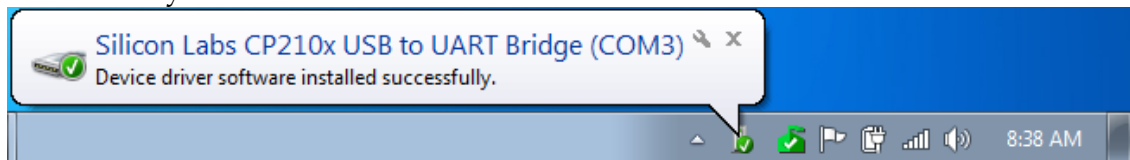
Windows 7 users need to be logged in as an Administrator on their Windows 7 PC before beginning the installation process.

### A. **ORDERBASE MINI HARDWARE INSTALLATION PROCEDURE**

1. Plug in the OrderBase Transmission Assistant docking station into a USB port on the PC. When the device driver has been identified and installed, you will see a confirmation message in the lower right part of the monitor.




Followed by:

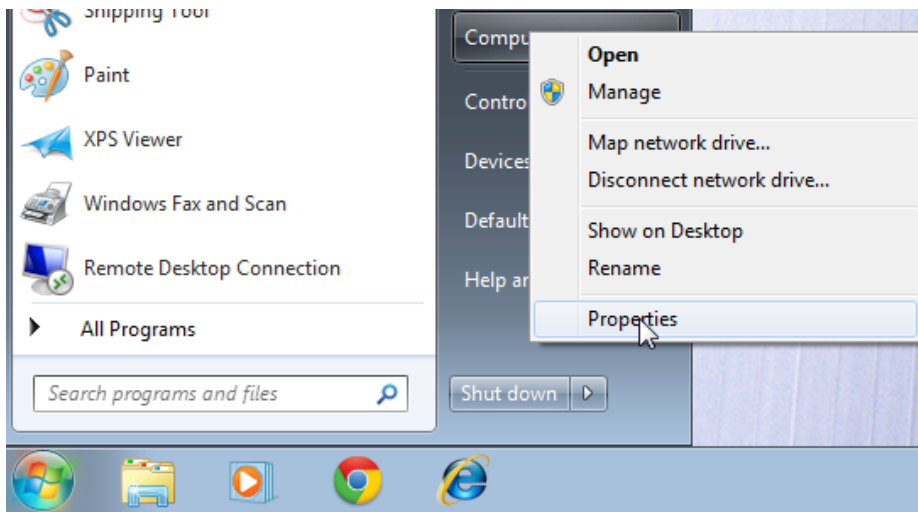


2. If the device driver does not automatically install, contact H. D. Smith Support.
3. The device driver for 64-bit Win7 is located at <http://www.hdsmith.com/file> using the CP210x VCP WinXPS2K3 Vista 7 menu option.

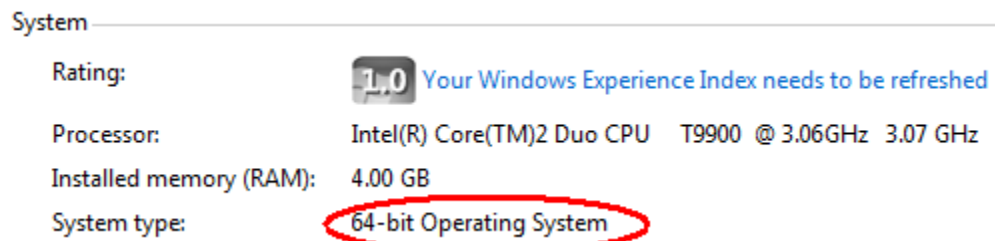
# Transmission Assistant Installation Guide (Windows 7)

## B. DETERMINE WHETHER YOUR PC IS RUNNING 32-BIT OR 64-BIT

1. Click Start 
2. Right-click on Computer
3. Select Properties from the menu displayed



This will appear:




## Transmission Assistant Installation Guide (Windows 7)

Or this will appear:


System

---


Manufacturer:	Hewlett-Packard
Model:	HP Mini 210-1000
Rating:	 <a href="#">Windows Experience Index</a>
Processor:	Intel(R) Atom(TM) CPU N450 @ 1.66GHz 1.67 GHz
Installed memory (RAM):	1.00 GB
System type:	<b>32-bit Operating System</b>

If you are still having trouble determining which version of Windows 7 you have, there are two other methods. If one does not work, try the other.

### View System window in Control Panel

1. Click **Start** , type **system** in the **Start Search** box, and then click **system** in the **Programs** list.
2. The operating system is displayed as follows:
  - For a 64-bit version operating system: **64-bit Operating System** appears for the **System type** under **System**.
  - For a 32-bit version operating system: **32-bit Operating System** appears for the **System type** under **System**.

### View System Information window

1. Click **Start** , type **system** in the **Start Search** box, and then click **System Information** in the **Programs** list.
2. When **System Summary** is selected in the navigation pane, the operating system is displayed as follows:
  - For a 64-bit version operating system: **x64-based PC** appears for the **System type** under **Item**.
  - For a 32-bit version operating system: **x86-based PC** appears for the **System type** under **Item**.

If you still cannot determine the operating system bit count with these methods, contact H. D. Smith Support.

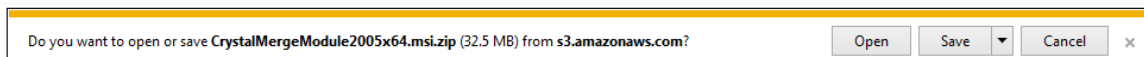
## Transmission Assistant Installation Guide (Windows 7)

### C. **CRYSTAL REPORTS MERGE MODULE 2005 SOFTWARE INSTALLATION PROCEDURE**

1. Open your Internet browser.
2. In the address bar type: <http://www.hdsmith.com/file>
3. Click Go or press Enter
4. Choose Crystal Merge Module 2005 menu option

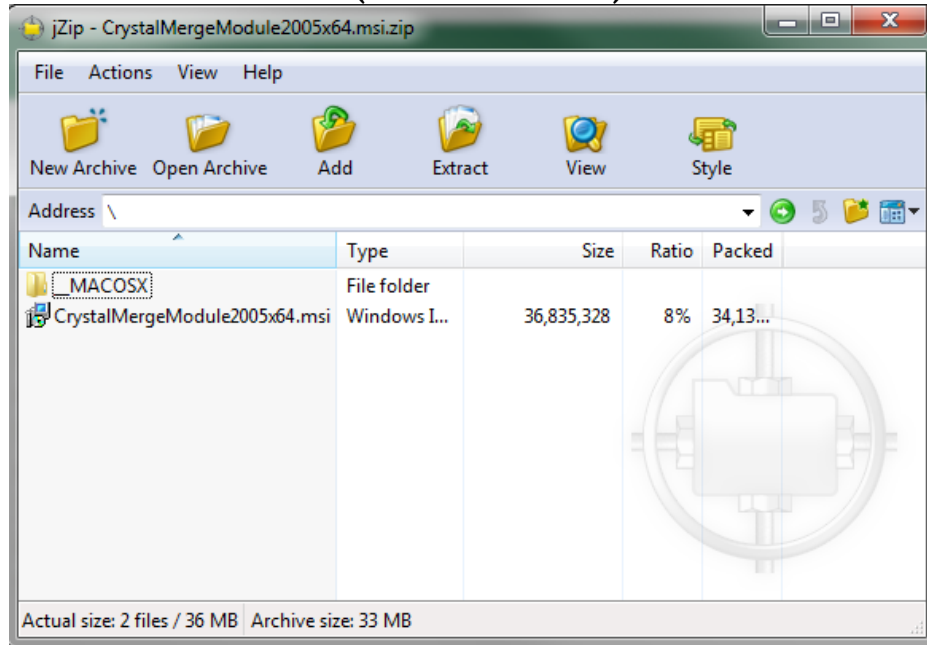
Note: Depending on which version was selected for installation, the messages displayed on the subsequent screens may vary slightly.

5. After selecting the appropriate Crystal Merge Module menu option, you will be prompted to Open or Save the file. Click Open.



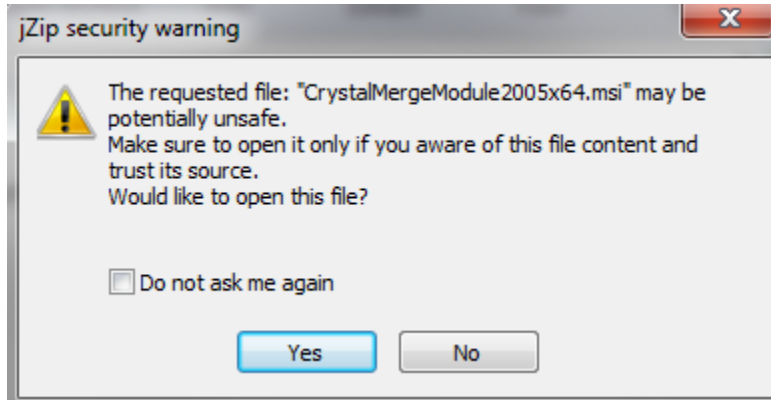
6. After the file has been successfully downloaded, a window displaying the contents of the file will appear.

## Transmission Assistant Installation Guide (Windows 7)



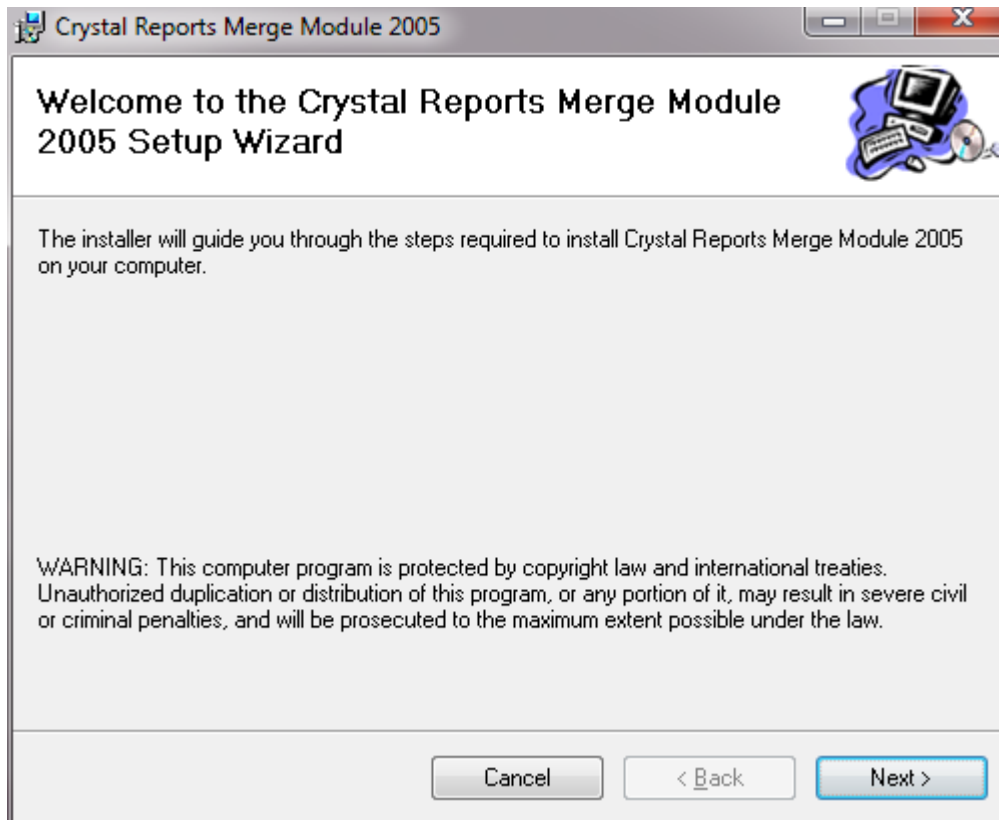
7. Double click on the Crystal Merge Module msi file.
8. A Security Warning message will be displayed. Click Yes to open the file.

## Transmission Assistant Installation Guide (Windows 7)



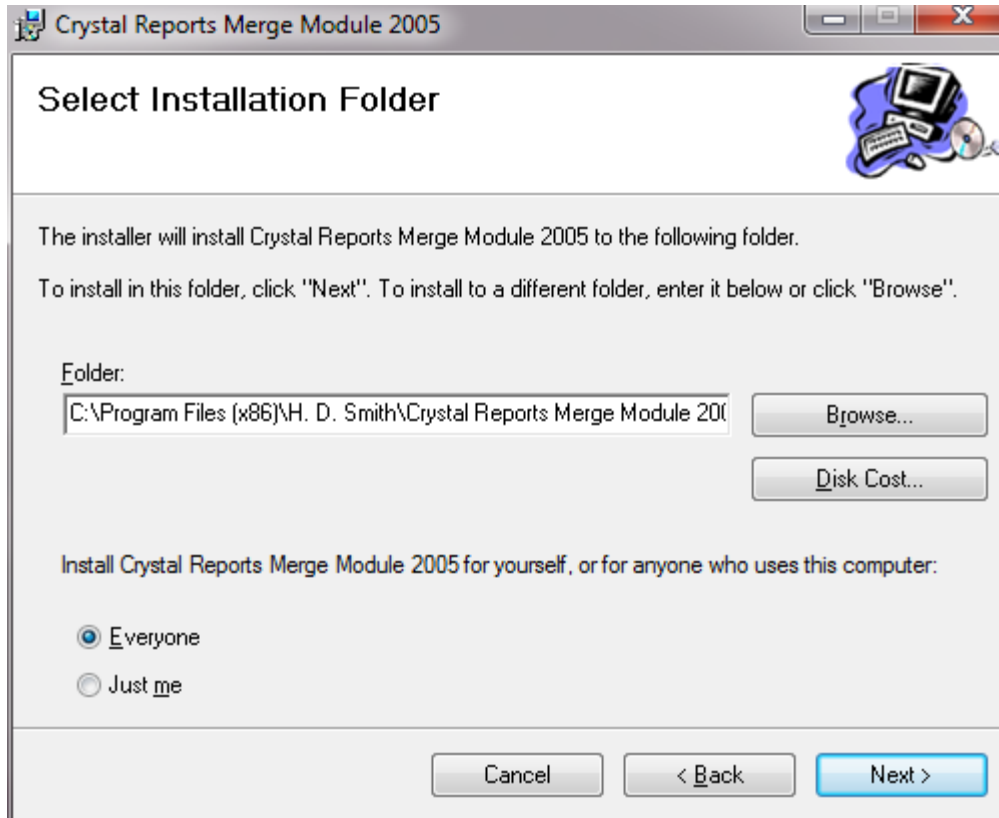
NOTE: An extraction message window will display for a brief moment.

9. The Crystal Reports Merge Module 2005 Setup Wizard window will appear as shown below. Click **Next >** to continue.



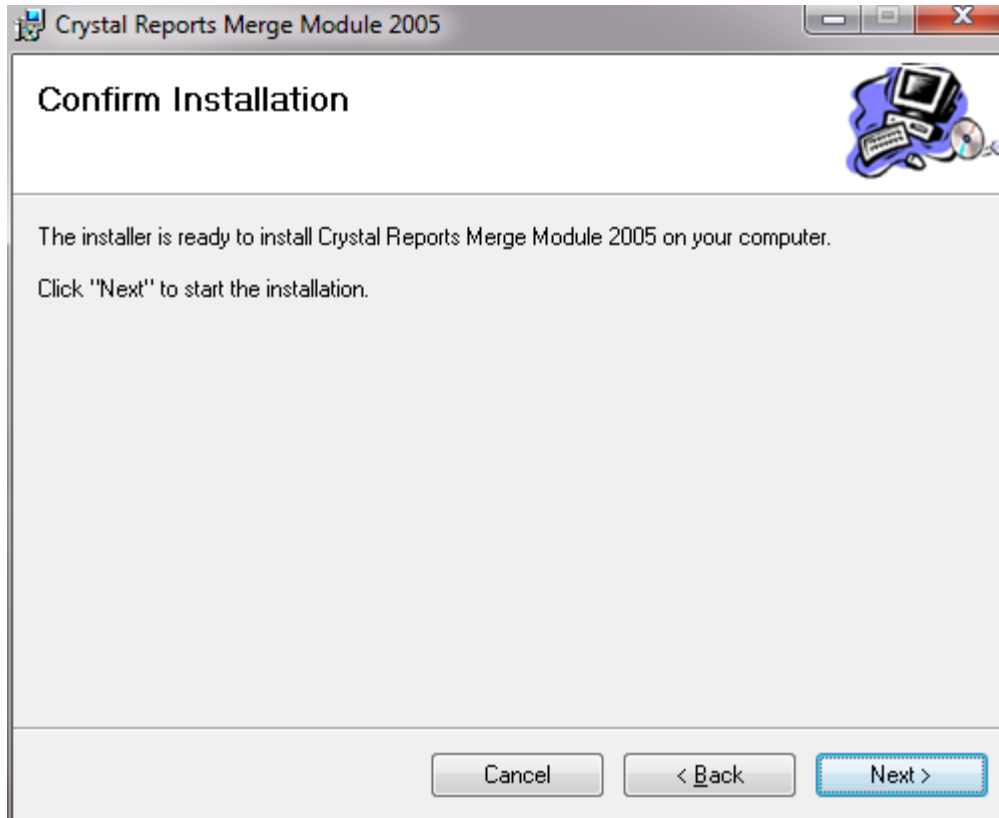
## Transmission Assistant Installation Guide (Windows 7)

9. The Crystal Reports Merge Module 2005 window will appear as shown below. This window will ask to “Select Installation Folder.” Please accept the recommended default parameters. Click **Next >** to continue.



## Transmission Assistant Installation Guide (Windows 7)

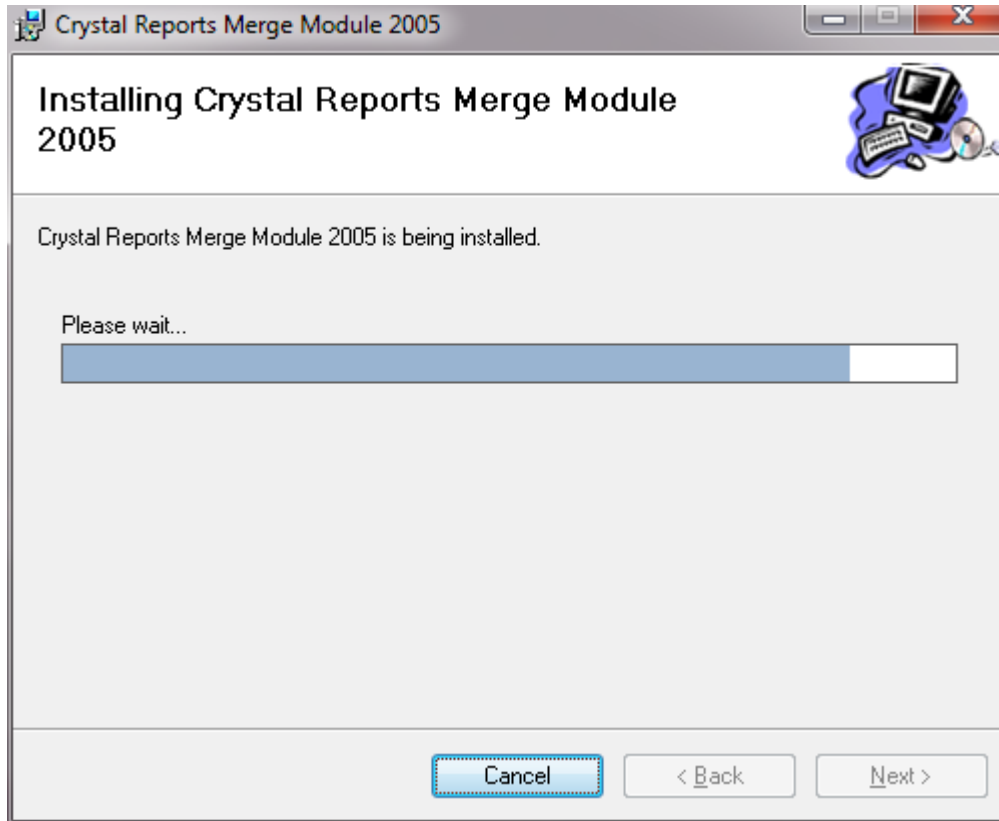
10. The Crystal Reports Merge Module 2005 window will appear as shown as shown below. This window will ask to “Confirm Installation.” Click **Next >** to continue.





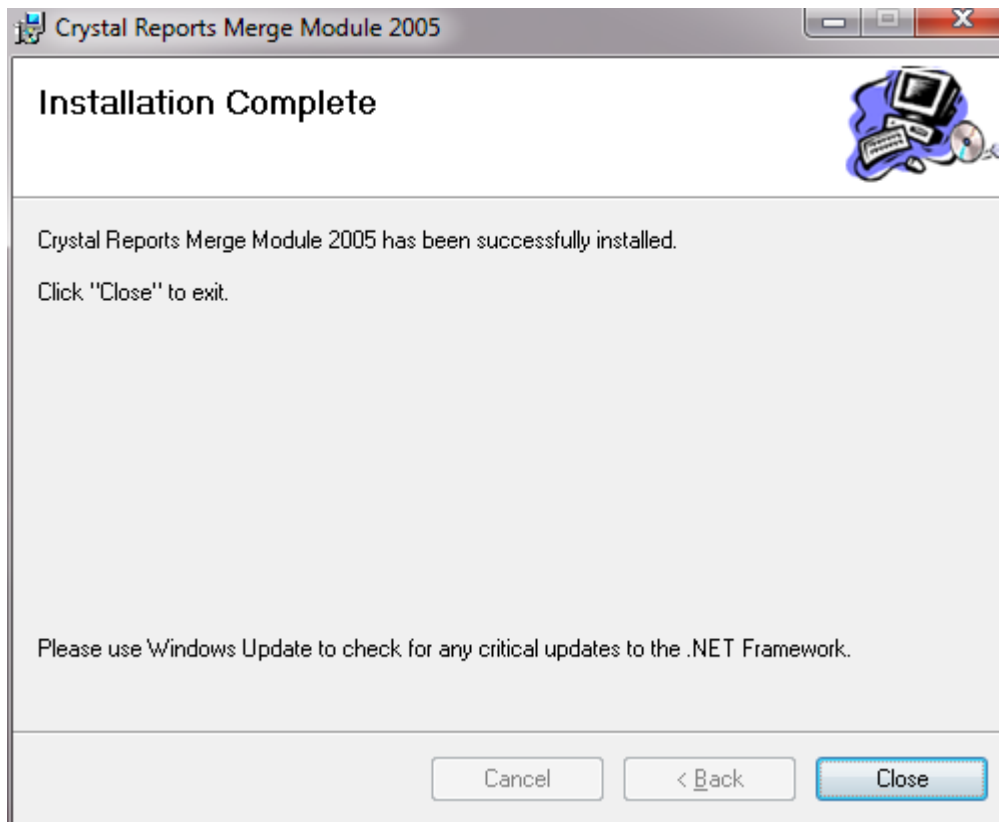
## Transmission Assistant Installation Guide (Windows 7)

11. A message will appear while the Crystal Reports Merge Module 2005 is installing.



## Transmission Assistant Installation Guide (Windows 7)

12. Once finished, the Crystal Reports Merge Module 2005 window will appear as shown below. This window states "Installation Complete." Click  to finish Crystal Reports Merge Module 2005 installation process.



The Crystal Reports Merge Module 2005 is now installed.

If your computer is running Windows 7 (64-bit version), repeat this process beginning at Step 4 and choosing the Crystal Merge Module 2005x64 menu option.

After Crystal Reports Merge Module installation is complete, the next step is to install the OrderBase Transmission Assistant software. Follow the instructions below to install the OrderBase Transmission Assistant software.

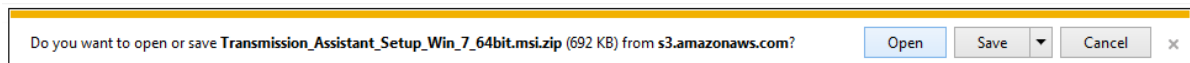
## Transmission Assistant Installation Guide (Windows 7)

### **D. TRANSMISSION ASSISTANT SOFTWARE INSTALLATION PROCEDURE**

1. Open your Internet browser.
2. In the address bar type: <http://www.hdsmith.com/file>
3. Click Go or press Enter
4. Select the appropriate Transmission Assistant menu option:
  - a. For Windows 7 (64-bit version) choose Transmission Assistant Setup Win 7 64 bit
  - b. For Windows 7 (32-bit version) choose Transmission Assistant Setup Wind 7 x86

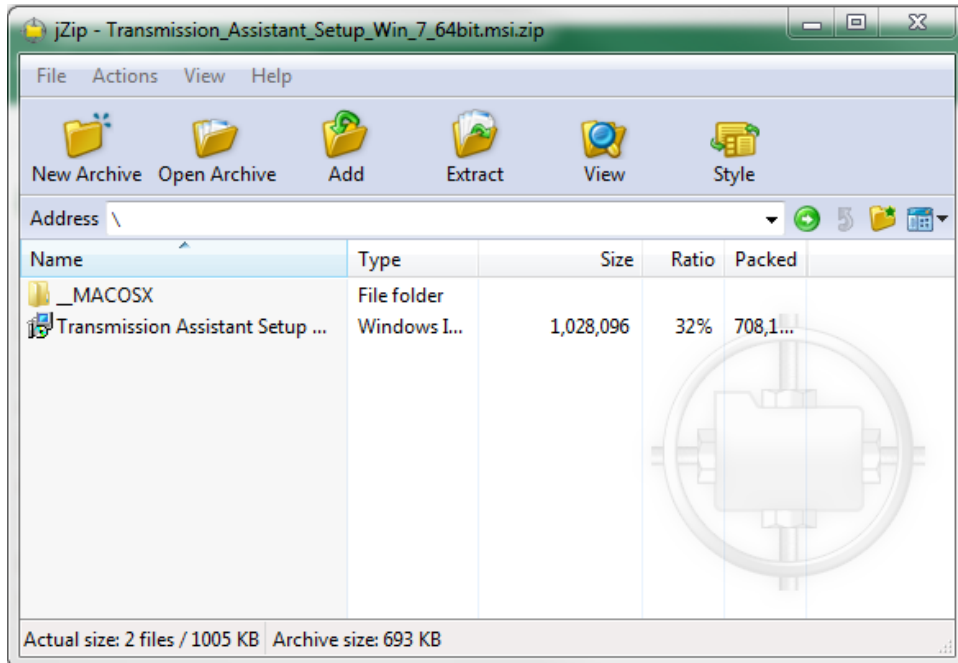
Note: Depending on which version was selected for installation, the messages displayed on the subsequent screens may vary slightly.

5. After selecting the appropriate Transmission Assistant Setup menu option, you will be prompted to Open or Save the file. Click Open

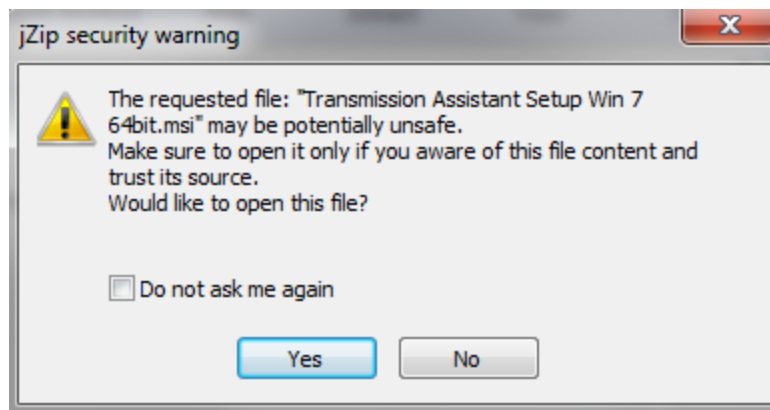


## Transmission Assistant Installation Guide (Windows 7)

6. After the file has been successfully downloaded, a window displaying the contents of the file will appear.



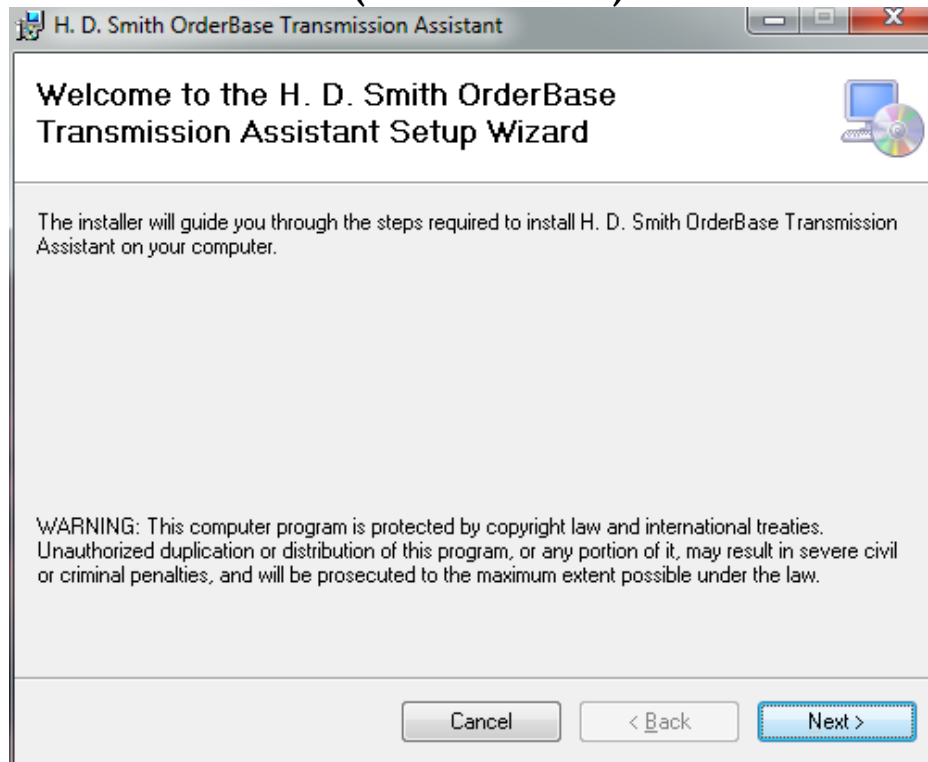
7. Double click on the Transmission Assistant Setup msi file.
8. A Security Warning message will be displayed. Click Yes to open the file.



NOTE: An extraction message window will display for a brief moment.

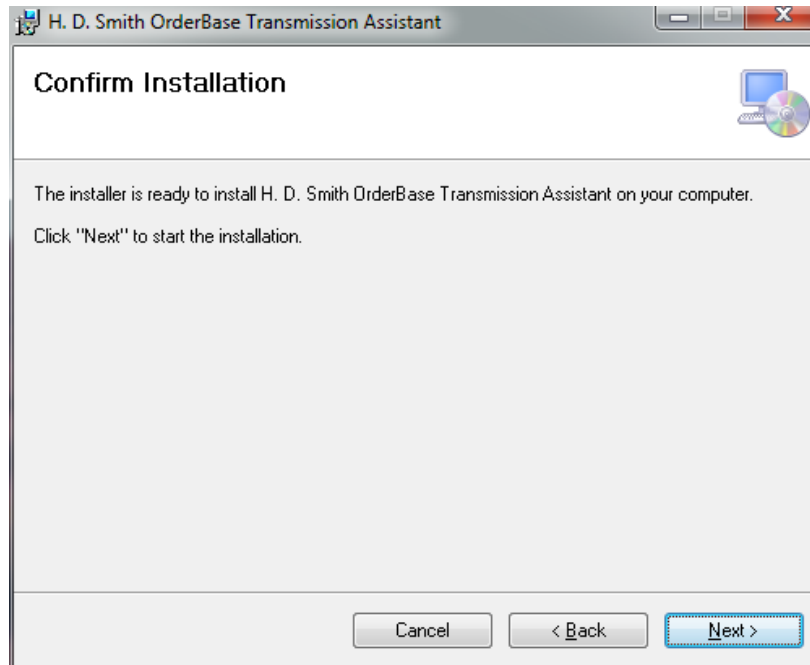
9. The OrderBase Transmission Assistant Setup Wizard window will appear as shown below. Click *Next >* to continue.

## Transmission Assistant Installation Guide (Windows 7)



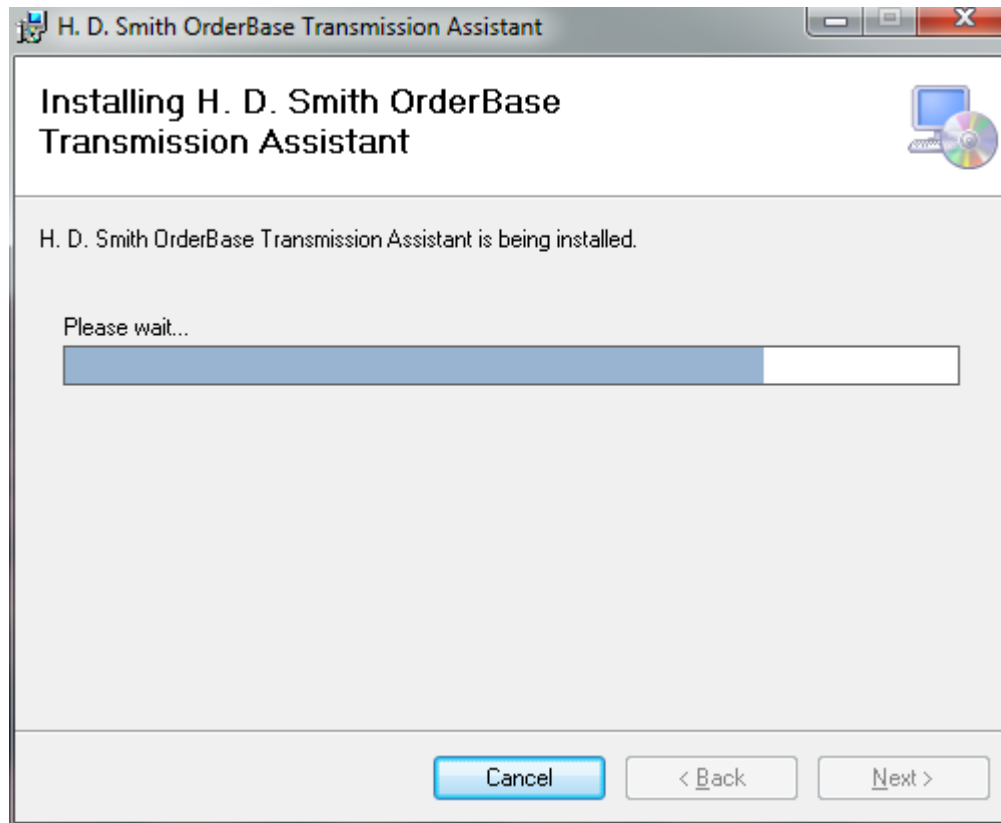
## Transmission Assistant Installation Guide (Windows 7)


10. The OrderBase Transmission Assistant window will appear as shown below. This window will ask to “Confirm Installation.” Click *Next >* to continue.



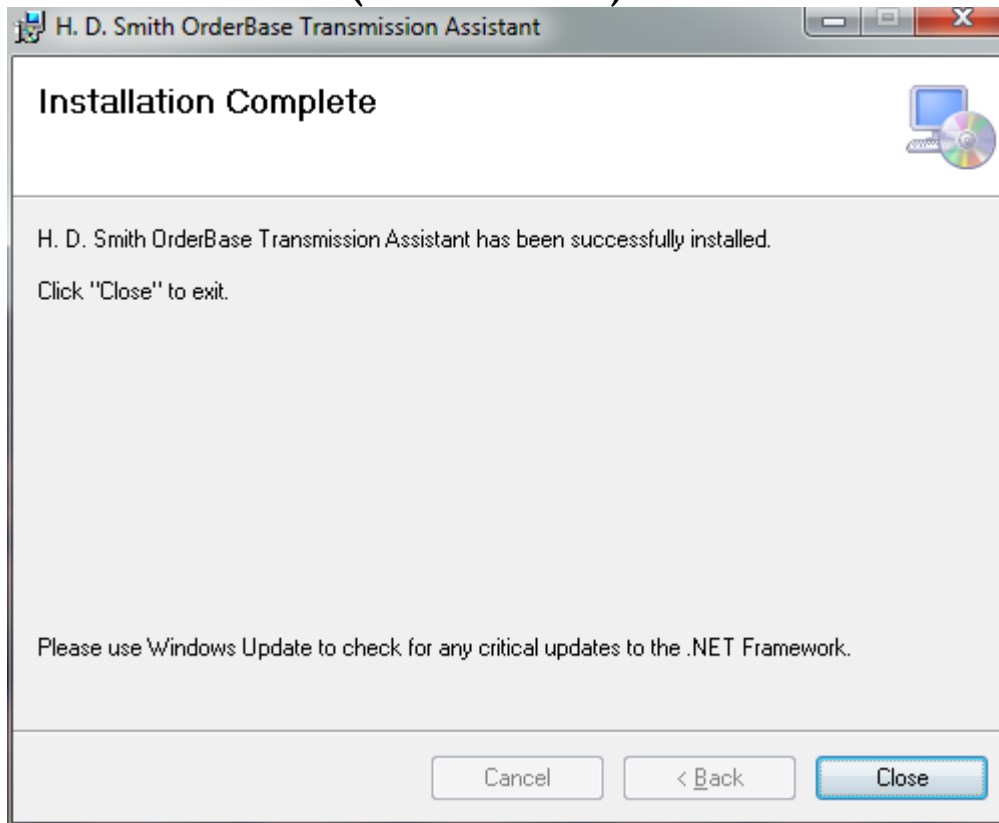
## Transmission Assistant Installation Guide (Windows 7)

11. The OrderBase Transmission Assistant window will appear as shown below. This window states "Installing OrderBase Transmission Assistant."




12. Once finished, the OrderBase Transmission Assistant window will appear as shown below. This window states "Installation Complete." Click **Close** to finish the OrderBase Transmission Assistant installation process and automatically add the OrderBase Transmission Assistant icon  to your desktop.

## Transmission Assistant Installation Guide (Windows 7)



### **E. TRANSMISSION ASSISTANT CONFIGURATION PROCEDURE**

The OrderBase Transmission Assistant is used to transmit the data from the OrderBase Mini device to H. D. Smith. How the Transmission Assistant is configured will determine how your data is transmitted and displayed. Double-click the Transmission Assistant icon  on your desktop and the OrderBase Transmission Assistant (Launcher) window will appear briefly as shown below.

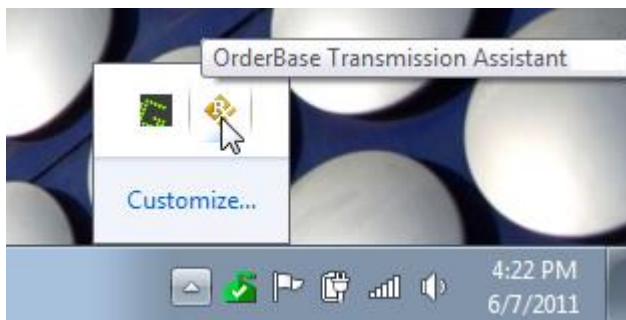
This Launcher goes out to the web and automatically applies any updates that may have been made to the OrderBase Transmission Assistant software.



## Transmission Assistant Installation Guide (Windows 7)




Once you have double-clicked the OrderBase Transmission Assistant icon, it will automatically install an icon on your status bar in the lower right corner of your screen. This icon is where you will access the OrderBase Transmission Assistant (Configuration) window as shown below.





## Transmission Assistant Installation Guide (Windows 7)

To access the configuration page, double click on the icon . The OrderBase Transmission Assistant will appear as shown below.

**OrderBase Transmission Assistant (Configuration)**

**Host**

Direct

OrderBase

OrderBase Xpress

**Credentials**

Account Number

Username

Password

Use as default

**Devices**

Current Device: <NONE>

Available devices

OBMINI COM4 Load

**Destination**

Display

Direct to printer

Printer

\\coitsvr\BIZHUBDEV

Launch on startup

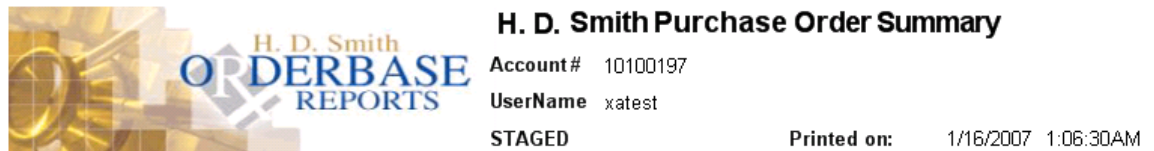
Close



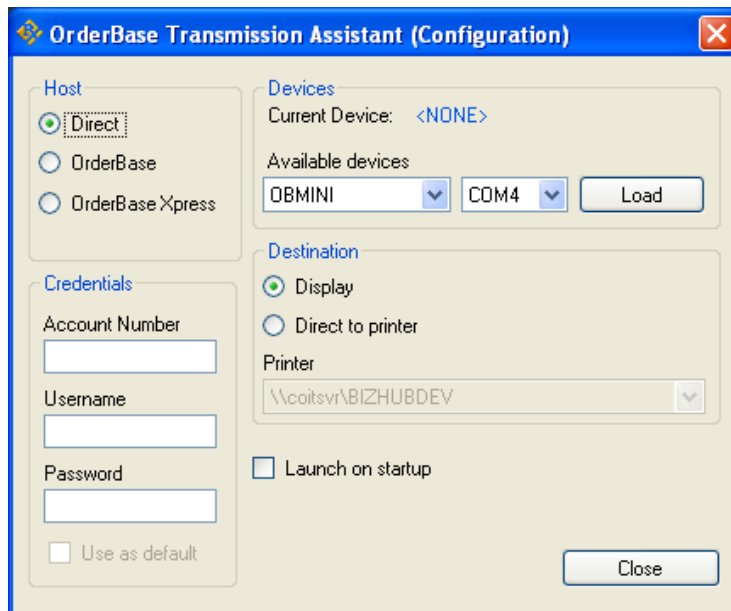
## Transmission Assistant Installation Guide (Windows 7)

To configure the OrderBase Transmission Assistant:

1. The **Host** setting determines whether the data transmits directly to H. D. Smith or is staged in OrderBase Xpress.
  - To transmit directly to H. D. Smith, leave this set to Direct.
  - To stage your Orders, Labels, Inventory and Returns in OrderBase Xpress, change this to OrderBase Xpress. (Retailers from OB Mini will transmit directly to H. D. Smith regardless of the setting.) Reports staged in OrderBase Xpress will list “STAGED” directly under the UserName as shown below.

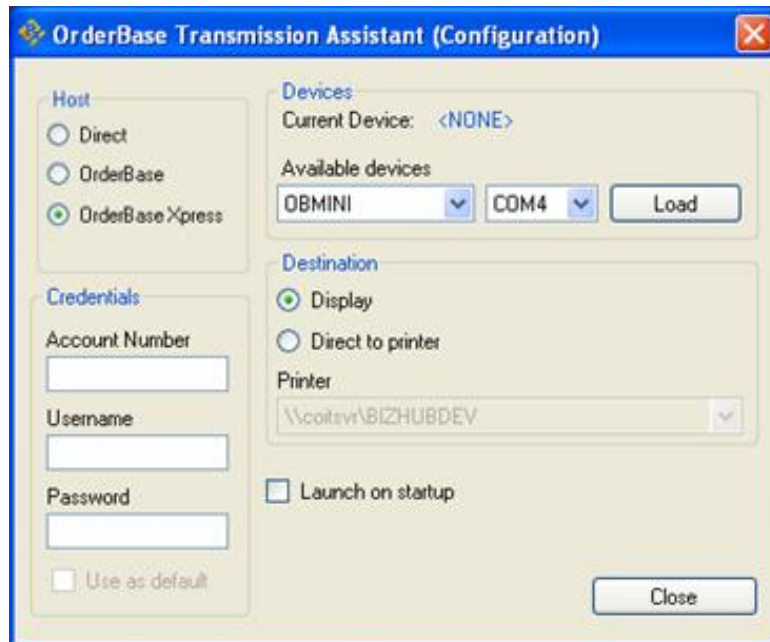


- The OrderBase option is not available at this time. Do not choose this setting.



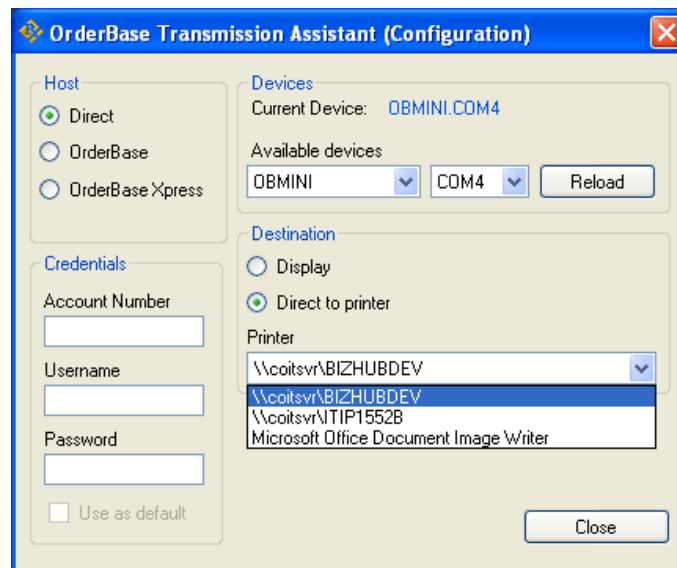
## Transmission Assistant Installation Guide (Windows 7)

- The **Devices** setting determines whether the device transmitting is the OBMINI. The COM Port will have been defaulted automatically for both devices upon installation of the OrderBase Transmission Assistant.
  - If transmitting using the OBMini device, leave this set to OBMINI.



## Transmission Assistant Installation Guide (Windows 7)

3. The **Destination** setting determines whether the transmission report displays to the screen or prints to a printer.
  - To display on the screen, leave this set to Display.
  - To print to a printer, change this setting to Direct to a Printer. Then use the drop-down arrow beside the printer field to select a printer as shown below.



## Transmission Assistant Installation Guide (Windows 7)

4. The **Credentials** setting determines the account number, user name and password associated with the data being transmitted.
  - The credentials setting can be left blank, in which case the user will be prompted, by the window shown below, to enter this information with each transmission.

The dialog box titled "Xpress Access Authorization" contains three text input fields: "Account Number", "UserName", and "Password". At the bottom, there are two buttons: "OK" and "Cancel".

- If you do not wish to be prompted with each transmission, enter your account number, user name and password in the appropriate credentials field. Then check the "Use as default" box. These credentials will be used with each transmission for a seamless transmission.

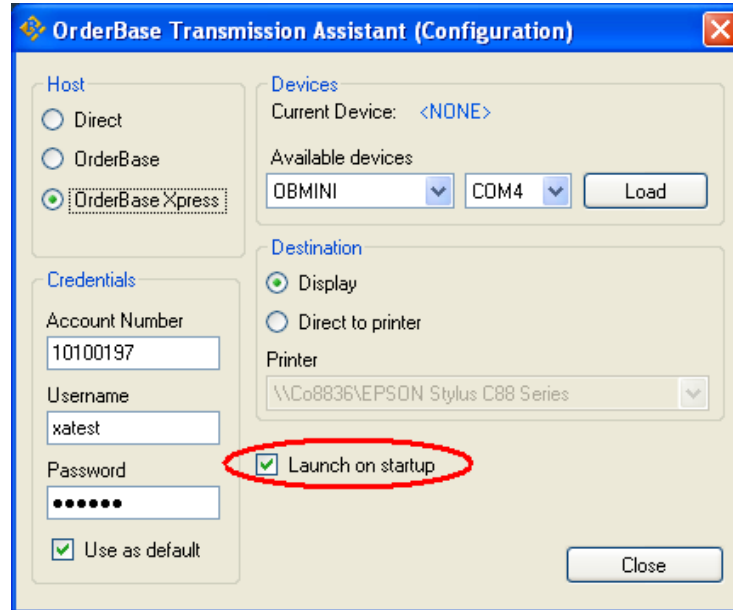
The "OrderBase Transmission Assistant (Configuration)" dialog box has several sections:
 

- Host:** Radio buttons for "Direct", "OrderBase", and "OrderBase Xpress" (which is selected).
- Devices:** "Current Device: <NONE>", "Available devices" dropdowns for "OBMINI" and "COM4", and a "Load" button.
- Destination:** Radio buttons for "Display" (selected) and "Direct to printer", and a "Printer" dropdown menu showing "\\Co8836\EPSON Stylus C88 Series".
- Credentials:** Text boxes for "Account Number" (10100197), "Username" (xatest), and "Password" (masked with dots). A checkbox labeled "Use as default" is checked and circled in red.
- Other:** A "Launch on startup" checkbox is checked.

 A "Close" button is located at the bottom right.

## Transmission Assistant Installation Guide (Windows 7)

5. If you wish to have the OrderBase Transmission Assistant launch on startup of your PC, check the “Launch on startup” check box as shown below.



The configuration of the OrderBase Transmission Assistant is now complete. These configuration settings may be changed by the user at any time by clicking on the OrderBase Transmission Assistant icon in the status bar in the lower right corner of the screen.