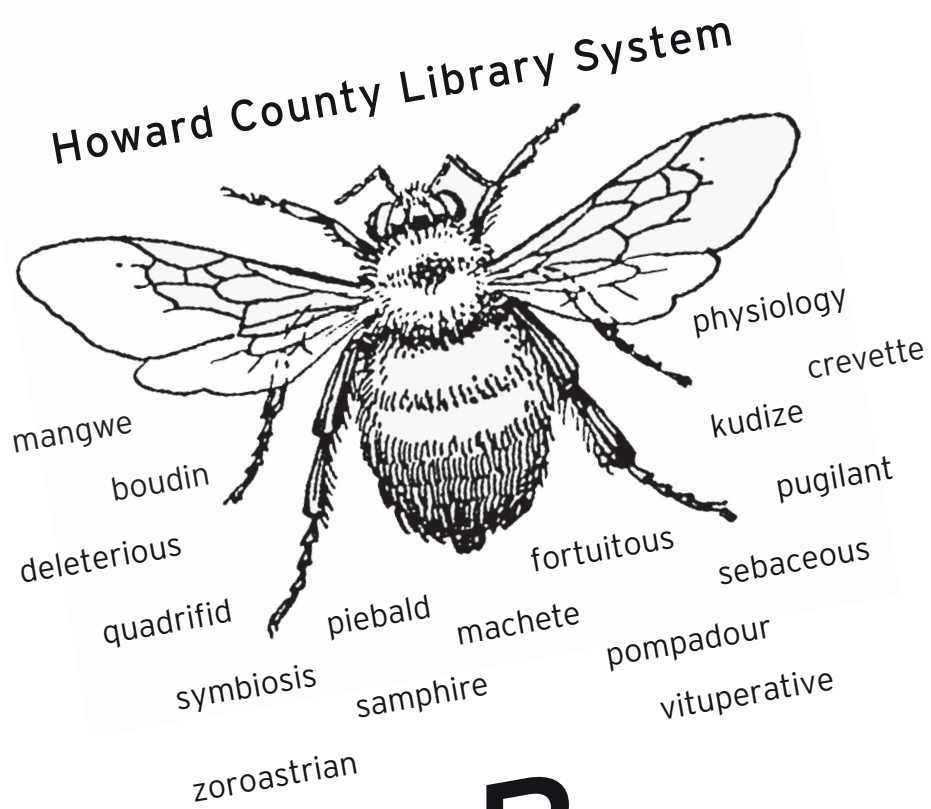


Howard County Library System Spelling Bee



B.
(spelling) 2023

March 18, 2023
Reservoir High School



**HOWARD COUNTY
LIBRARY SYSTEM**
Public Education for All

PROGRAM

WELCOME
Dave Bittner

INTRODUCTION OF JUDGES AND OFFICIALS
Dave Bittner

REMARKS
Tonya Aikens
Howard County Library System, President & CEO

Howard County Executive Calvin Ball

RECOGNITION OF BUMBLEBEE WINNERS
Dave Bittner

INTRODUCTION OF CONTESTANTS
Dave Bittner

SPELLING BEE

AWARDS CEREMONY

BEE OFFICIALS

Emcee
Dave Bittner
Producer and Host, The Cyberwire Podcast

Pronouncer
Ellen Flynn Giles, Friends & Foundation of Howard
County Library System

Head Judge
Kimberly Prescott, Prescott HR

Dictionary Judge
Saketh Sundar, 2019 Scripps National Spelling Bee
Winner and 2016-2019 HCLS Spelling Bee Winner

Appeals Judge
Nana Owusu, Friends & Foundation of HCLS

Rounds and Records Judge
Kristi Simon, Friends & Foundation of HCLS

Rounds and Records Official
Julie Parham, HCLS Board of Trustees

Timekeeper
Cari Gast, HCLS Head of Children's Curriculum

ACKNOWLEDGEMENTS

HCLS PRESIDENTIAL CIRCLE DONORS

Yolanda and Francis Bruno Family Fund
Friends & Foundation of HCLS
Howard County Public School System
Howard Hughes Corporation
M&T Bank
Josephine B. Scheffenacker Education Trust
Estate of George Rothstein

HCLS SPELLING BEE SPONSORS

Friends & Foundation of HCLS
Howard County Public School System
Educational Systems Federal Credit Union
Truist

Congratulations
Howard County
Spelling Bee Participants

LEARN

Financial solutions for the
education community

301.779.8500 esfcu.org/Locations

NCUA Federally insured by NCUA

Educational Systems
Federal Credit Union

BUMBLEBEES

FIRST GRADE WINNERS

Jannat Channu, Talbott Springs
Dhanya Gedela, Manor Woods
Gabby Getachew, Jeffers Hill

SECOND GRADE WINNERS

Brian Houston, Talbott Springs
Alexis Schlee, Manor Woods
Siddharth Sharma, Jeffers Hill
Toreoluwa "Tore" Talabi, Columbia Academy

THIRD GRADE WINNERS

Anwasha Tara Baliyan, Talbott Springs
Meera Bhatia, Manor Woods
Ayman Danish, Jeffers Hill
Vidyeshsai Jagu, Deep Run

PRIZES

STUDENTS

Winner

- \$1,000 scholarship
- trophy
- subscription to Merriam-Webster Unabridged Online Dictionary
- one-year subscription to Britannica Online Premium

Second place

- \$750 scholarship
- trophy
- *Merriam-Webster's Collegiate Dictionary*

SCHOOLS

The schools of the top two spellers receive trophies.

CONTESTANTS

Courtesy of our generous sponsors, all contestants receive a certificate, medallion, and T-shirt. Alternates receive a certificate and T-shirt.

NATIONAL SPELLING BEE

The winner of the HCLS Spelling Bee advances to the National Spelling Bee in Washington. All expenses for the speller and his/her chaperone will be paid, thanks to our generous sponsors.

The National Spelling Bee began in 1925 with nine contestants. It was sponsored by the *Louisville Courier-Journal*, which had conducted a statewide match to find the best grade-school spellers in Kentucky. They then decided to extend a challenge to other newspapers to choose their own champions who would take part in a spelling showdown in Washington, DC to determine a national champion.

In 1941, Scripps took over sponsorship of the National Spelling Bee. In recent years the program experienced a surge in popularity thanks to live primetime coverage on ABC; live daytime coverage on ESPN; the Oscar-nominated documentary, *Spellbound*; the critically-acclaimed motion picture, *Akeelah and the Bee*; and the Tony award-winning musical, *The 25th Annual Putnam County Spelling Bee*.

COMPETITION SCHEDULE

Scripps National Spelling Bee takes place May 28 - June 3. Full competition schedule available May 1 at spellingbee.com.

BEE COVERAGE

Photos from tonight's event will be posted to the HCLS Flickr page at flickr.com/photos/hocolibrary within one week.

Follow along on social media with **#HCLSBee**.

ABOUT THE BEE

The HCLS Spelling Bee is open to students in grades 4 through 8 in Howard County public and private schools and home school associations. Schools and home school associations held classroom and school bees from November 1, 2022 through February 28, 2023. Winners from school bees advanced to tonight's event.

Accredited as a regional bee and organized under the rules of the Scripps National Spelling Bee, HCLS Spelling Bee is sponsored by Friends & Foundation of HCLS, Howard County Public School System, Educational Systems Federal Credit Union, and Truist.

PAST WINNERS

Year	Winner	School (Grade)	Winning Word
2022	Christian Cherian	Ilchester ES (5)	vituperative
2021	Charan Bala	Clarksville MS (8)	mangwe
2020	canceled		
2019	Saketh Sundar	Clarksville MS (8)	crevette
2018	Saketh Sundar	Clarksville MS (7)	boudin
2017	Saketh Sundar	Mayfield Woods (6)	samphire
2016	Saketh Sundar	Bellows Springs (5)	physiology
2015	Lauren Smith	Bethel Christian Academy (6)	machete
2014	Megan Rabe	Clarksville MS (8)	quadrifid
2013	Mitsuki Ota	Columbia Academy (7)	sebaceous
2012	John Nolan	Mayfield Woods MS (8)	kudize
2011	Samuel Osheroff	Clarksville MS (7)	deleterious
2010	Samuel Osheroff	Clarksville MS (6)	pugilant
2009	John Nolan	Deep Run ES (5)	fortuitous
2008	Andrew Risinger	Patapsco Valley MS (8)	pompadour
2007	Heather desJardins-Park	Lime Kiln MS (8)	symbiosis
2006	Joey Haavik	Pointers Run ES (5)	zoroastrian
2005	Priyanka Chavan	Fulton ES (5)	piebald

C O N T E S T A N T S

NUMBER	NAME	SCHOOL	GRADE
1	Aaran Chander	Bellows Spring ES	5
2	Omolola Adelaja	Bethel Christian Academy	8
3	Julia Raihing	Bollman Bridge ES	5
4	Christian Cherian	Bonnie Branch MS	6
5	Quinn Harper	Bryant Woods ES	5
6	Satvik Jain	Burleigh Manor MS	7
7	Pranav Kittane	Clarksville ES	4
8	Navya Dwivedi	Clarksville MS	6
9	Kate Rhee	Clemens Crossing ES	4
10	Oluwatobi Abioye	Columbia Academy	6
11	Miriam Holgate	Cradlerock ES	4
12	Niveditha Baskar	Deep Run ES	5
13	Talha Hussain	Dunloggin MS	8
14	Leia Brewster	Elkridge Landing MS	6
15	Arya Kamthe	Ellicott Mills MS	8
16	Gideon Elliott	Folly Quarter MS	8
17	Kelsi Pearson	Forest Ridge ES	4
18	Emily Kim	Fulton ES	5
19	Anirudh Nuthalapati	Glenwood MS	6
20	Arjun Devayajanam	Gorman Crossing ES	4
21	Olive Yu	Hammond MS	6
22	Srilasya Desaraju	Hanover Hills ES	5
23	Christopher McIntyre	HCHC Leadership Academy	6
24	Odelia Low	Jeffers Hill ES	4
25	Megan Poon	Laurel Woods ES	5
26	Aaron Jeffery	Longfellow ES	5

CONTESTANTS

27	Luke Noblezada	Manor Woods ES	5
28	Ruthravan Kathirkaman	Mayfield Woods MS	8
29	Golibenachukwu Nwosu	Mount View MS	6
30	Oluwafeyisola Osibodu	Murray Hill MS	8
31	Phineas Swinski	Oakland Mills MS	8
32	Meqdim Abera	Our Lady Of Perpetual Help	4
33	George Joseph	Patapsco MS	8
34	Zoya Rizvi	Patuxent Valley MS	7
35	Lexi Nguyen	Phelps Luck ES	5
36	Aaliyah Perez	Resurrection St. Paul School	8
37	Noah Niederhaus	Rockburn ES	4
38	Yassin Mousa	Running Brook ES	5
39	Azariah Garrus	Spartek Academy	7
40	Julia Veiga	St. Augustine School	8
41	Evelyn Huh	St. John's Parish Day School	4
42	Arvin Kukadia	St. Louis School	4
43	Maresa Nicharot-Emory	Stevens Forest ES	4
44	Andrew Ryan	Swansfield ES	5
45	Eseosa Guobadia	Talbott Springs ES	4
46	Malaika Chaudhry	Tarbiyah Academy	8
47	Shivasai Korrapati	Thomas Viaduct MS	6
48	Ameya Budaraju	Trinity School	6
49	Isha Kamthe	Veterans ES	5
50	Joshua Noronha	Waterloo ES	5
51	Eric Han	Waverly ES	5
52	Charlie Kim	West Friendship ES	5
53	Sofia Hufft	Wilde Lake MS	8

A L T E R N A T E S

NAME	SCHOOL	GRADE
Jessica Shankar	Bellows Spring ES	4
Emily Ocampo	Bethel Christian Academy	7
Andy Butler	Bollman Bridge ES	4
Laya Ramesh	Bonnie Branch MS	8
Kovid Dash	Bryant Woods ES	4
Archana Nair	Burleigh Manor MS	7
Amelia Bhatti	Clarksville ES	5
Adrian Mendonca	Clarksville MS	7
Daniel Genovese	Clemens Crossing ES	5
Melvin Palmer	Columbia Academy	7
Cameron Dimond	Cradlerock ES	5
Niralya Sengathir	Deep Run ES	4
Olivia Lawson	Dunloggin MS	7
Enkbulgan Batzorig	Elkridge Landing MS	7
Abigail Kim	Ellicott Mills MS	7
Riddhi Mittal	Folly Quarter MS	7
Jacob Collier	Forest Ridge ES	5
Veer Shah	Fulton ES	5
Saleisha Sojan	Glenwood MS	8
Frantzia Pierre	Gorman Crossing ES	5
Evangeline Feng	Hammond MS	8
Ameya Nookala	Hanover Hills ES	4
Heaven "Joy" Haley	HCHC Leadership Academy	7
Alexandra Woodsmith	Jeffers Hill ES	4
Nahom Tesfaye	Laurel Woods ES	5
Raquel Rodriguez	Longfellow ES	5
Aaiza Adil	Manor Woods ES	5
Chomin Yim	Mayfield Woods MS	6
Neha Koorinagarajan	Mount View MS	6

A L T E R N A T E S

Oluwakorede Oladigbolu	Murray Hill MS	7
Charlotte Ward	Oakland Mills MS	6
Theo Watson	Our Lady Of Perpetual Help School	6
Srikar Midde	Patapsco MS	7
T'Sai Alleyne	Patuxent Valley MS	8
Sophie Tang	Phelps Luck ES	4
Olivia Levine	Resurrection St. Paul School	8
Kimmy Du	Rockburn ES	5
Miriam Kulansky	Running Brook ES	5
Layla Rivas	Spartek Academy	7
Connor Mertz	St. Augustine School	6
Chloe Sheffield	St. John's Parish Day School	5
Arkin Kukadia	St. Louis School	8
Abigail Cox	Stevens Forest ES	5
Aghawni Che	Swansfield ES	4
Summer Nasafi	Talbott Springs ES	5
Tasnia Hossain	Tarbiyah Academy	6
Liam Kattie	Thomas Viaduct MS	6
Nadia Scarano	Trinity School	6
Peyton Adornetto	Veterans ES	5
Alexander Le	Waterloo ES	4
Ashvanth Balaji	Waverly ES	5
Ridhi Ganti	West Friendship ES	4
Tanai Amira	Wilde Lake MS	7

RULES

The Scripps National Spelling Bee (SNSB) has no authority over the conduct of local spelling bees, and will not render judgments relating to their conduct or outcomes. Individuals bearing complaints about local spelling bees should register their concerns with local spelling bee officials.

DECISIONS OF LOCAL SPELLING BEE OFFICIALS ARE FINAL.

These Rules for Local Spelling Bees are not the rules in effect at the Scripps National Spelling Bee. When a local spelling bee official says, "We use the national rules," s/he is probably indicating that the Rules for Local Spelling Bees are in effect.

The national finals operate under a significantly different set of rules called the Contest Rules of the 2023 Scripps National Spelling Bee. These rules—obtainable through www.spellingbee.com – contain provisions that are specific to unique conditions at the national finals. The successful implementation of many national finals rules at the local level is considered impossible and therefore is not recommended.

1. Format: A local spelling bee is conducted in rounds. Each speller remaining in the spelling bee at the start of a round spells one word or answers one vocabulary item in each round – except in the case of a written, multiple choice or online test. The spelling bee may be conducted orally or in writing or in a manner that is a combination of the two. If, however, the spelling bee officials specify an oral format, the speller may request a written format only as specified in the term of Rule 3: Accessibility.

2. Word list: Local spelling bee officials are responsible for selecting the word lists for use in their spelling bees and are encouraged to select word lists generated by the SNSB that are dated 2023. These word lists include many words that appear in the current edition of two study resources – the School Spelling Bee Study List and Words of the Champions. Also, these word lists end with a section of words that do not appear in the aforementioned study resources and are for use near the end of a local spelling bee, if the local bee officials determine that their use in the spelling bee is warranted. All words appearing on 2023 SNSB word lists are entries in *Merriam-Webster Unabridged*, the official dictionary of the SNSB, available at <http://unabridged.merriam-webster.com>. *Merriam-Webster Unabridged* is the final authority and sole source for the spelling of words; the primary source used to craft the pronunciations, definitions and language origins for the SNSB word lists; and the only authority to be consulted by spelling bee officials, as well as the sole source used during the spelling bee to verify the information in 2023 SNSB word lists. Some alternate pronunciations appearing in 2023 SNSB word lists may have been drawn from Merriam-Webster print publications because the SNSB deemed the information helpful to the speller.

3. Accessibility: Local spelling bee officials will strive to provide accommodation for spellers who have physical challenges. All requests for spelling bee officials to accommodate special needs involving sight, hearing, speech or movement should be directed to spelling bee officials well in advance of the spelling bee date. The spelling bee judges have discretionary power to amend oral and/or written spelling requirements on a case-by-case basis for spellers with diagnosed medical conditions involving sight, hearing, speech or movement.

4. Pronouncer's role: The pronouncer strives to pronounce words according to the diacritical markings in 2023 SNSB word lists.

(1) In Oral Spelling Rounds:

- a. Homonyms: If a word has one or more homonyms, the pronouncer indicates which word is to be spelled by defining the word.
- b. Speller's requests: The pronouncer responds to the speller's requests for a definition, sentence, part of speech, language(s) of origin and alternate pronunciation(s) as listed in the competition word list produced by the SNSB. The pronouncer does not entertain root word questions, requests for alternate definitions or requests for slower pronunciation.
- c. Pronouncer's sense of helpfulness: The pronouncer may offer word information – without the speller having requested the information – if the pronouncer senses that the information is helpful and the information is presented in the entry for the word in a 2023 SNSB word list.

(2) In Oral Vocabulary Rounds:

- a. Procedure: The pronouncer reads aloud the vocabulary item and both options (A) and (B), but does not indicate which is correct.
- b. Homonyms: If a word has one or more homonyms, the pronouncer indicates which word is in question by spelling the word aloud.
- c. Speller's requests: The pronouncer responds to the speller's requests for the question and/or answer options to be repeated. The pronouncer may also provide the spelling of the word in question.

5. Judges' role: The judges uphold the rules and determine whether or not words are spelled correctly or vocabulary items are answered correctly. They also render final decisions on appeals in accordance with Rule 10. They are in complete control of the competition and their decision is final on all questions.

(1) Interaction with the speller: Because seeing the speller's lip movements may be critical in detecting misunderstandings or misspellings, the judges encourage spellers to face them when pronouncing and spelling the word.

(2) Notice of rules: The judges ensure that all spellers and audience members are given an opportunity to receive a complete copy of the rules prior to the start of the spelling bee.

(3) Misunderstandings: The judges participate in the exchange of information between the speller and pronouncer if they feel that clarification is needed. Also, the judges listen carefully to the speller's pronunciation of the word; and, if they sense that the speller has misunderstood the word, the judges work with the speller and pronouncer until they are satisfied that reasonable attempts have been made to assist the speller in understanding the word. While the judges are responsible for attempting to detect a speller's misunderstanding, it is sometimes impossible to detect a misunderstanding until an error has been made. The judges are not responsible for the speller's misunderstanding.

(4) Pronouncer errors: The judges compare the pronouncer's pronunciation with the diacritical markings in the word list. If the judges feel that the pronouncer's pronunciation does not match the pronunciation specified in the diacritical markings, the judges direct the pronouncer to correct the error as soon as it is detected.

(5) Disqualifications for reasons other than error: The judges will disqualify a speller (1) who refuses a request to start spelling or to provide an answer to a vocabulary item; (2) who does not approach the microphone when it is time to receive the word or question; (3) who does not comply with the eligibility requirements; (4) who engages in unsportsmanlike conduct; (5) who, in the process of retracing a spelling, alters the letters or sequence of letters from those first uttered; (6) who, in the process of spelling, utters unintelligible or nonsense sounds; or (7) who, in the process of providing an answer in an oral vocabulary round, provides a blend of correct and incorrect information. (For example: If in answering the question, "What is porridge made from? A. fur, or B. grain," the speller provides as an answer either "A. grain" or "B. fur.").

Speller activities that do not merit disqualification: The judges may not disqualify a speller (1) for failing to pronounce the word either before or after spelling it; (2) for asking a question; or (3) for noting or failing to note the capitalization of a word, the presence of a diacritical mark, the presence of a hyphen or other form of punctuation, or spacing between words in an open compound.

6. Speller's role: In a spelling round, the speller makes an effort to face the judges and pronounce the word for the judges before spelling it and after spelling it. The speller while facing the judges makes an effort to utter each letter distinctly and with sufficient volume to be understood by the judges. The speller may ask the pronouncer to say the word again, define it, use it in a sentence, provide the part of speech, provide the

(1) language(s) of origin, and/or provide an alternate pronunciation or pronunciations as listed on the pronouncer's competition word list produced by the SNSB.

(2) In an oral vocabulary round, a speller may answer the item by providing (1) the letter associated with the chosen answer, (2) the chosen answer or (3) both. If the correct answer is identified by (1) associated letter alone or (2) by answer alone or

(3) by both correct letter and correct answer, the speller is correct. For example: If the speller is offered the question, "What is porridge made from? A. fur, or B. grain," each of the following methods of answering is correct: "B," "grain," or "B. grain."

7. Correction of a misspelling: The pronouncer and judges will not ask the speller to correct another speller's misspelling, even in end-of-bee circumstances.

8. Errors: Upon providing an incorrect spelling of a word or an incorrect answer to a vocabulary item, the speller immediately drops out of the competition, except as provided in Rule 9.

9. End-of-bee procedure:

- (1) When the number of spellers is reduced to two, the elimination procedure changes. At that point, when one speller misspells a word, the other speller shall be given an opportunity to spell that same word. If the second speller spells that word correctly, plus the next word on the pronouncer's list, then the second speller shall be declared the champion.
- (2) If one of the last two spellers misspells a word and the other speller, after correcting the error, misspells the new word, then the misspelled new word shall be referred to the other speller. If this other speller then succeeds in correcting the error and spells the next word on the list, then s/he shall be declared the champion.
- (3) If both spellers misspell the same word, both shall continue in the competition, and the one who first misspelled the word shall be given a new word to spell.

10. Appeals: Provided that the appellant adheres to the Time and Manner Requirements specified herein, the judges will review appeals and render decisions on the following five grounds:

- (1) The speller correctly spelled the word but was eliminated for misspelling it; failing to say the word before or after spelling it; failing to indicate capitalization, hyphen, spaces or diacritical marks; or incorrectly indicating capitalization, hyphen, spaces or diacritical marks.

Judges: Do your records or an audio or video recording indicate that the speller offered the correct letters in the correct order and never changed the order of letters?

If yes, reinstate the speller even if the speller failed to say the word before or after spelling, or failed to indicate or incorrectly indicated capitalization, hyphen, spaces or diacritical marks. If no, deny the appeal.

- (2) The speller correctly spelled a homonym of the word in question.

Judges: Did the pronouncer provide a definition? Refer to Rule 5. If no, reinstate the speller. If yes, deny the appeal.

- (3) In an *oral vocabulary round*, the speller correctly identified an answer matching the definition of a homonym of the word.

Judges: Did the pronouncer fail to spell the word? Refer to Rule 5. If yes, reinstate the speller. If no, deny the appeal.

- (4) The speller correctly spelled an alternate spelling of the word as listed in Merriam-Webster Unabridged (1) whose pronunciation is identical to the word in question, (2) whose definition is identical to the word in question, and (3) that is clearly identified as a standard variant of the word in question.

Judges: Check Merriam-Webster Unabridged online. If all three criteria are met, reinstate the speller. If fewer than three criteria are met, deny the appeal. Also, note that spellings having temporal labels (such as archaic, obsolete), stylistic labels (such as substandard, nonstandard), or regional labels (such as North, Midland, Irish) will not be accepted as correct.

- (5) The officials did not adhere to Rule 9, the End-of-Bee procedure, or Rule 8.

Judges: Carefully examine Rules 5 and 10. If you erred and the competition is still under way, reinstate the speller. If you erred and the competition has concluded, contact the spelling bee coordinator for the next level of spelling bee for authorization to send both your declared champion and the speller (or spellers) affected by the error to the next level of competition. If you did not err, deny the appeal.

- (6) Invalid grounds for reinstatement: The judges will not entertain appeals on the following grounds:

- a. The pronouncer allegedly mispronounced the word.
- b. The pronouncer offered pronunciations and/or word information that the speller did not request, and the unrequested information contributed to the misspelling.
- c. One or all Bee officials indicated to the speller that the speller was pronouncing the word correctly, but the speller's spelling indicates that the speller wasn't pronouncing it correctly.
- d. One or all Bee officials did not inform the speller before spelling that the speller's pronunciation was incorrect and/or that the speller was misunderstanding the word, and this inaction contributed to the misspelling.
- e. The speller offered a correct spelling as indicated in a dictionary other than Merriam-Webster Unabridged or other online or print sources.
- f. The pronouncer did not answer a root word question or provide the correct root word.
- g. The pronouncer did not honor the speller's request to slow down the pronunciation of the word, break the word's pronunciation into syllables, or provide an alternate definition or sentence.

Time and Manner Requirements:

- A written appeal must be hand-delivered to the appeals judge indicating the speller's name, the name and contact information of the person filing the appeal, the relationship of the person filing the appeal to the speller (must be a parent, guardian, teacher or principal of the speller), the word in question, and the grounds for reinstatement.
- Any question relating to the spelling of a word should be referred to the appeals judge immediately in writing on the official appeal form. The completed appeal form should include: the word in question, the name of the speller, and the reason for the appeal.
- Appeals may be filed by a parent, legal guardian, or teacher of the speller who is seeking reinstatement in the contest. The judges will not entertain appeals from individuals seeking to dislodge another speller from the competition. The deadline for filing an appeal is before the speller affected would have received his/her next word had s/he stayed in the competition. No appeal will be entertained after that word has been given to another speller. When only two spellers remain, an oral appeal must be made immediately (i.e., before the speller affected would have received his/her next word had s/he stayed in the competition.)
- The deadline for delivering an appeal is before the speller affected would have received their next word had they stayed in the spelling bee. To minimize disruptions, however, effort should be made to deliver an appeal by the end of the round in which the speller was eliminated.
- When five or fewer spellers remain, the written appeal requirement is suspended, and an oral appeal must be made before the speller would have received their next word had they stayed in the spelling bee.
- While the competition is in session, individuals who have filed appeals may not directly approach the judges unless explicit permission to approach the judges has been given.
- The judges will contact the speller if they decide to reinstate the speller.
- To minimize disruption to the pace of the spelling bee and the concentration of the spellers, the judges are under no obligation to stop the spelling bee to discuss with the speller's parent(s), legal guardian or teacher a denied appeal.

The judges are in complete control of the competition. Their decision shall be final on all questions.