

# WinTV-HVR-1500 for Vista Media Center

## Quick Installation Guide

**Hauppauge Computer Works, Inc.**  
91 Cabot Court, Hauppauge, NY 11788  
tel: 631-434-1600 • fax: 631-434-3198 • tech support: 631-434-3197  
techsupport@hauppauge.com  
www.hauppauge.com

### 1. Contents of the WinTV-HVR-1500

- **WinTV-HVR-1500** Hybrid NTSC/ATSC Express Card device
- **Antenna adapter cable**
- **Portable TV antenna**
- **Audio/Video accessory cable**
- **WinTV-HVR Installation CD-ROM**

**For Vista Media Center kits, you will also find:**

- **Media Center Remote Control transmitter** and two AA batteries
- **Media Center Remote control receiver/blaster box**
- **IR transmitter cable** (blaster cable)
- **USB cable** for the Media Center remote control receiver/blaster box



### 2. What is ATSC digital TV, and how does the WinTV-HVR-1500 work?

ATSC digital TV is a over-the-air digital TV for North America. ATSC digital TV typically requires an antenna for reception, and is currently broadcast in 200 cities, with over 1500 TV stations. **Note:** ATSC digital TV is NOT digital cable TV or digital satellite TV. Media Center cannot currently receive digital cable TV or digital satellite TV.

ATSC digital TV is transmitted in several resolutions, from "standard definition" which is similar to cable TV, up to high definition which has about 16 times the resolution of normal cable TV. In any resolution, ATSC digital TV gives sharper pictures than analog cable TV and near CD quality sound.

WinTV-HVR-1500 has a built-in analog cable TV and digital ATSC TV tuner. It uses your PC or laptop's CPU for displaying both analog and digital TV programs on your PC screen.

The decoding of high definition ATSC is very processor intensive, and the smoothness of high definition TV programs depends upon how fast your PC or laptop system is. Other PC activities that consume CPU resources might affect the display of ATSC digital TV. Slow video, jerky video and momentary pausing of video are all results of a CPU which is temporarily being used by other activities.

The supplied portable digital TV antenna is designed primarily for ATSC digital TV reception, and will work within 10 miles of an ATSC transmitter (reception might be limited by obstructions such as steel buildings).

For the best ATSC digital TV reception, a roof top 'Wideband' or 'High gain' antenna is recommended. In the U.S., a good ATSC digital antenna selector can be found at **TitanTV.com** under **Resources**.

### 3. Installing the WinTV-HVR-1500 device

The WinTV-HVR-1500 will work with Microsoft's Media Center application in Vista Home Premium or Ultimate.

Locate an **ExpressCard/54** (54 mm) slot in your laptop. Plug the WinTV-HVR-1500 into this slot.

Plug the **Antenna Adapter Cable** into the **mini TV connector** on WinTV-HVR-1500. Then, plug either a rooftop TV antenna, the included digital TV antenna, **cable TV** or a **TV antenna** into the 'F' connector on the Antenna Adapter Cable.

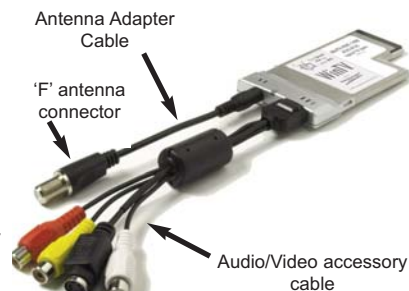
**It is recommended to connect to a roof top aerial during the first time installation. This will provide better signal quality than a portable antenna.**

#### Connecting an external Audio/Video source

You can also connect external audio/video sources via the A/V accessory cable. Media Center can use a cable TV or satellite set top box for TV watching if the set top box is connected to the WinTV-HVR-1500 A/V accessory cable.

Plug the **Audio/Video accessory cable** into the small connector on the side of the WinTV-HVR-1500.

Connect your A/V source using either the **Composite** (yellow) or **S-Video** connection and the red and white audio jacks.

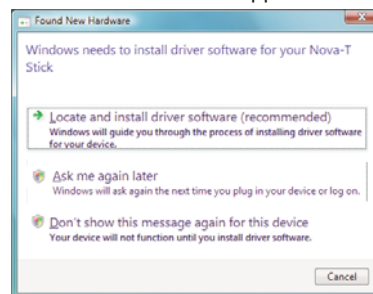


### 4. Installing the WinTV-HVR-1500 driver

**Note:** the latest WinTV-HVR-1500 software can be found at [www.hauppauge.com/pages/support/support\\_hvr1800.html](http://www.hauppauge.com/pages/support/support_hvr1800.html)

#### Installing the WinTV-HVR-1500 Windows Vista driver

After plugging the WinTV-HVR-1500 in a ExpressCard/54 port on your laptop, turn on your computer. Windows Vista will load. The **Found New Hardware** window will appear.



Insert the **WinTV-HVR Installation CD-ROM** in your PC's CD-ROM drive. **Note: If the CD auto play opens a window, close this window.**

Click **Locate and install driver software (recommended)**. Then click **Don't search on-line**. Click **Next**. When the driver is installed, click **Close**.

### 5. Installing SoftMCE for Media Center

After installing the driver, browse the **WinTV-HVR Installation CD-ROM** and run **Setup.exe**. Then click on **Install WinTV**.

This will install **SoftMCE**. SoftMCE is Hauppauge's analog cable TV recorder for Windows Media Center. It is required if you want Media Center to be able to receive analog cable TV channels.

## 6. Install the Media Center Remote control receiver/blaster (only for WinTV MC-Kits)

The **Media Center remote control receiver/blaster box** is a small USB device which both receives remote control commands and transmits commands via its IR Blaster to change channels on a cable TV or satellite set top box.

To install the Media Center remote control receiver/blaster, simply plug one end of the supplied **USB cable** into the **Media Center remote control receiver/blaster box** and the other end into any USB port on your Vista Home Premium or Ultimate PC. Media



Center will automatically load the drivers for the MCE remote control. This will take one or two minutes.

To test the receiver, click the **Start button** in the middle of the remote control. Media Center should open.

If you have a **satellite set top box** and would like the Media Center remote control receiver/blaster to change channels on the set top box, plug one end of the **IR transmitter cable** into the back of the **Media Center remote control receiver/blaster box** and position the other end (the transmitter end) over the **IR receiver on your set top box**. Then run the TV Tuner Set up under Media Center (see below).

## 7. TV tuner setup in Media Center

To set up the TV tuner in the Vista Media Center application: go to **Tasks / Settings / TV / Set up TV signal**.

To set up the TV tuner in Windows XP Media Center: in the main Media Center menu go to **Settings / TV / Set up TV Signal**.

You will see a message: **Set Up Your TV Signal**. Click **Next**.

In **Confirm your Region**, make sure your region is selected. Click **Next**.

You will see **Automatic TV Signal Setup**. We recommend selecting **Configure my TV signal automatically**. Click **Next**.

**Note:** if you only see **digital antenna** at this point, then you did not install SoftMCE for analog channels. To fix this problem, repeat step 5 and reboot.

You will then see a message saying **Examining your TV signal**. Media Center is determining the type of TV connection you have. When it is finished, it will tell you whether you have a cable TV, antenna or set top box connection.

After determining the type of signal, you will see **You are Done!**

Now you need to set up the Electronic Program Guide. You will see a message: **Set Up Your Program Guide**. Click **Next**. The **Program Guide Set Up Wizard** will move you through the completion of the Program Guide set up.

When you are finished with the Program Guide Setup, click the **MyTV** button on your Media Center remote control to start watching TV.

## Troubleshooting

### Some notes on system compatibility

Decoding high definition HD TV is very CPU intensive. A graphics card with at least 64MBytes of memory and the latest graphics driver from the manufacturer makes the decoding task easier. Typically a 2.2 GHz Pentium 4 processor or equivalent with a graphics card having 64MBytes of memory is required to properly decode ATSC digital TV on your PC. A 1.6GHz AMD Sempro laptop computer tested in the Hauppauge lab used 50% of the CPU for playing ATSC 640i format, and 90% of the CPU when playing ATSC 1080i, the highest definition ATSC format.

In some cases, either a faster processor or more graphics memory might be required. Slow or jerky video and a noisy TV picture indicate system performance problems.

### Jerky video with live ATSC digital TV

Jerky or distorted video can be caused by two things in your PC or laptop: a slow CPU which cannot decode the ATSC TV signal fast enough, and a graphics system which cannot keep up with the high datarates of ATSC TV.

Many times, improving the performance of the graphics display will fix the jerky video display of ATSC digital TV. Here are some tips on improving graphics performance:

- **Use the latest graphics driver:** graphics drivers are often 'tweaked' to improve performance, especially the built-in graphics on laptops. Check the Microsoft Windows update site to download the latest graphics driver for your computer. For Dell computers, check the Dell website for the latest graphics driver.

- **Use Hauppauge's Primary program to optimize graphics performance:** **Primary.exe** is used to change the display mode of a graphics card for TV watching. This does not affect any other Windows program. **Primary.exe** is found in the Hauppauge WinTV program group. The default mode used by WinTV is **Force Primary**. **Force Primary** uses your processor to move the digital TV image into the graphics memory. It is more CPU intensive but often fixes display problems on some laptops.

To use hardware graphics acceleration, close your TV application, then run Primary. Click **Allow VMR**. Close Primary and rerun your TV application. The Allow VMR setting will allow your graphics system to use hardware acceleration for video decode. **Note:** graphics hardware acceleration does not work on all systems.

If this setting does not help, or if your TV application does not respond after a channel change, then your graphics system cannot use hardware graphics acceleration.

In this case, re-run **Primary**. Click **Force Primary** and **Close**.

### Only some channels are found during ATSC channel scan

If you are only receiving some known TV channels when scanning, it means your TV antenna is not adequate to pick up the channel. You will need either an antenna signal booster (a Radio Shack antenna amplifier will work) or a high gain antenna. Here's a link to an ATSC antenna selector:  
<http://www.antennaweb.org/aw/address.aspx>

## FCC Statement

**FCC ID: H90WINTV CE Statement:** This equipment has been tested and complies with EN 55013, EN 55020 and IEC 801-3 part 3 standards. **CAUTION:** Changes or modifications not expressly approved by the party responsible for compliance to the FCC Rules could void the user's authority to operate the equipment.

**Supplementary Television Broadcasting Receiving Apparatus** - Appareils supplémentaires de réception de télévision, Canada.