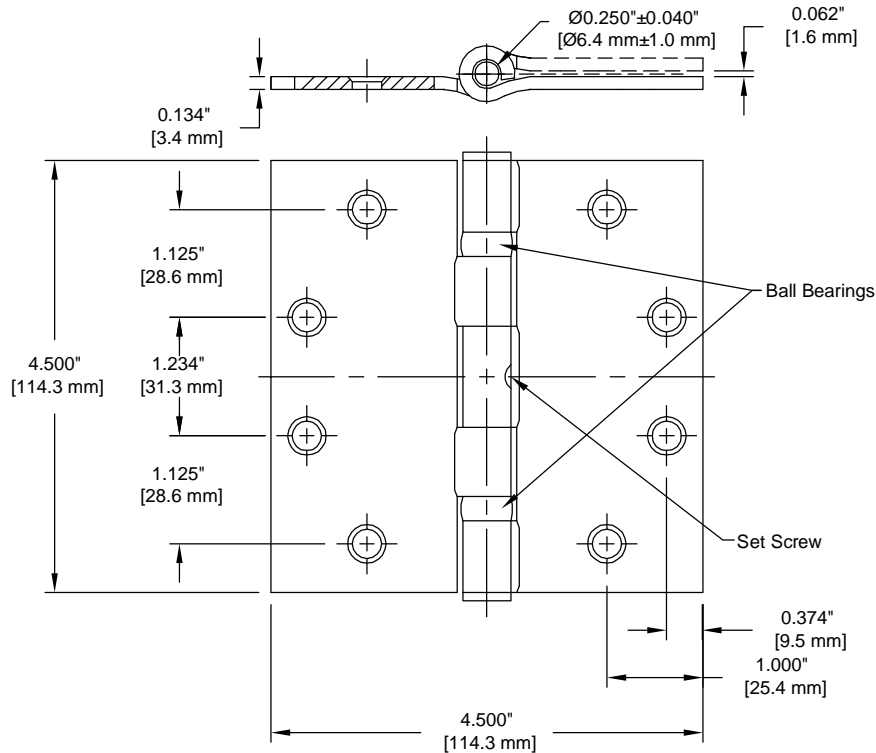


PRODUCT DATA SHEET

Product Description: 4 1/2" x 4 1/2" commercial standard weight ball bearing hinge, non removable pin. Fabricated from steel with a US26D satin chrome finish. Ships with mounting hardware.



Hole Pattern: Template

Gauge: 0.134"

Pack Quantity: Pack 3

Fasteners: 3 Packs x 8 Machine Screws 1/2" 12-24 F.H. x 8 Wood Screws 1 1/2" x 12 F.H. Included

Overall Size: 4.500" W X 4.500" H X 3.4 mm

Material: Steel

Finish: US26D Satin Chrome

Cross Reference

Manufacturer	Part Number



Description:

**Hinge, Standard Weight,
Ball Bearing, NRP,
4 1/2" X 4 1/2"**

Part Number:

HHFBB179NRP26D

Date

09/16

Rev.

04

Sheet 1 of 1