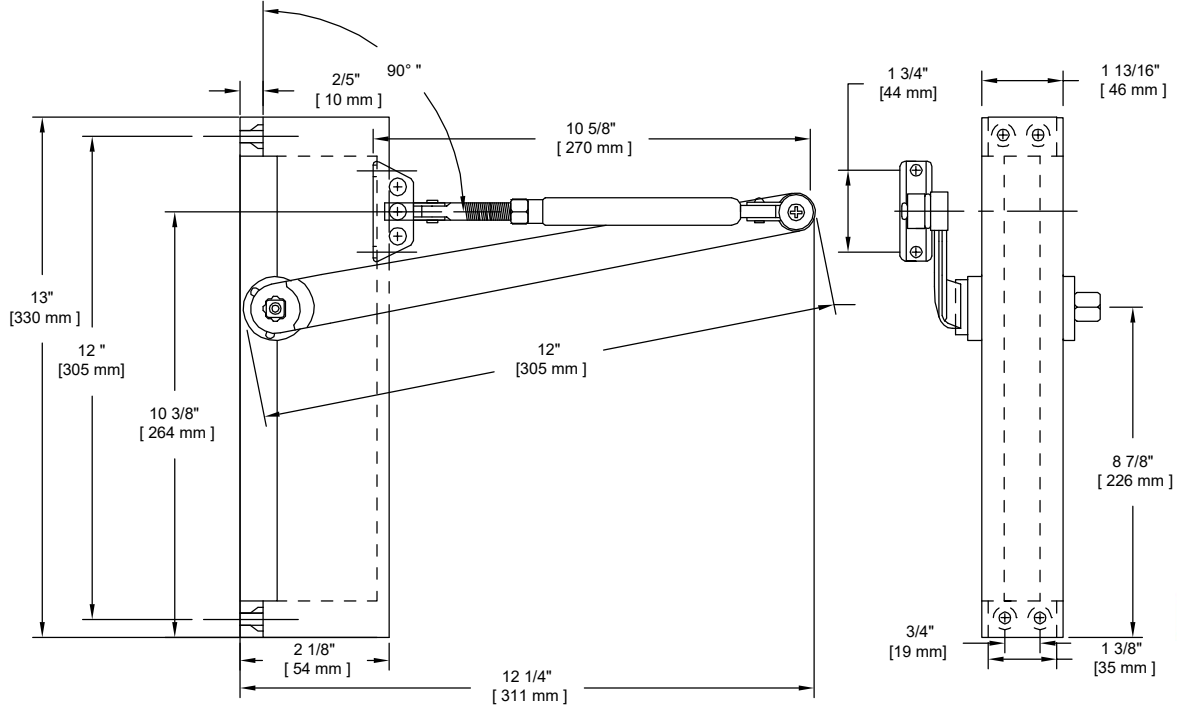


# PRODUCT DATA SHEET

**Product Description:** Universal application, non-handed door closer with an aluminum finish. Door closer is ANSI A156.4 Grade 1 certified and UL 10C fire rated. Product has a steel body with an aluminum alloy housing. Adjustable power size 1-6 that requires less than 5 lbs of force to open. Standard features include: sweep and latching speeds and adjustable backcheck. Tri-packed for regular arm, top jamb and parallel arm application. 10 year limited warranty. ADA compliant. Ships with mounting hardware.



Regular & Top Jamb				Parallel Arm			Applicable Door Weight lbs (kg)
Maximum Size of Door							
Closer Size	Interior	Exterior Inswing	Exterior Outswinging	Closer Size	Interior	Exterior Outswinging	
1	28" (0.71 m)			1			33-66 (15-30)
2	36" (0.91 m)			2	30" (0.76 m)		66-99 (30-45)
3	42" (1.07 m)	30" (0.76 m)	36" (0.91 m)	3	36" (0.91 m)	30" (0.76 m)	99-143 (45-65)
4	48" (1.22 m)	36" (0.91 m)	42" (1.07 m)	4	42" (1.07 m)	36" (0.91 m)	143-187 (65-85)

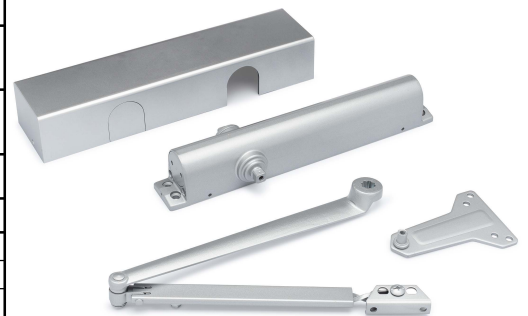
**Overall Size:** 13" W X 1 7/8" H X 12 1/4" D

**Material:** Steel Body And Aluminum Alloy Housing

**Finish:** Aluminum

## Cross Reference

Manufacturer	Part Number	Manufacturer	Part Number	Manufacturer	Part Number
Cal-Royal	CR801S	Yale	3301		
LCN	1460	Dor-O-Matic	SC81		
Norton	8301				
Dorma	7600				
Sargent	1230				



Description:

**Door Closer Kit,  
Universal, UL 10C, ANSI  
Grade 1, Spring 1-6**

Part Number:

**DC8300AL**

Date

03/25

Rev.

04

Sheet 1 of 1