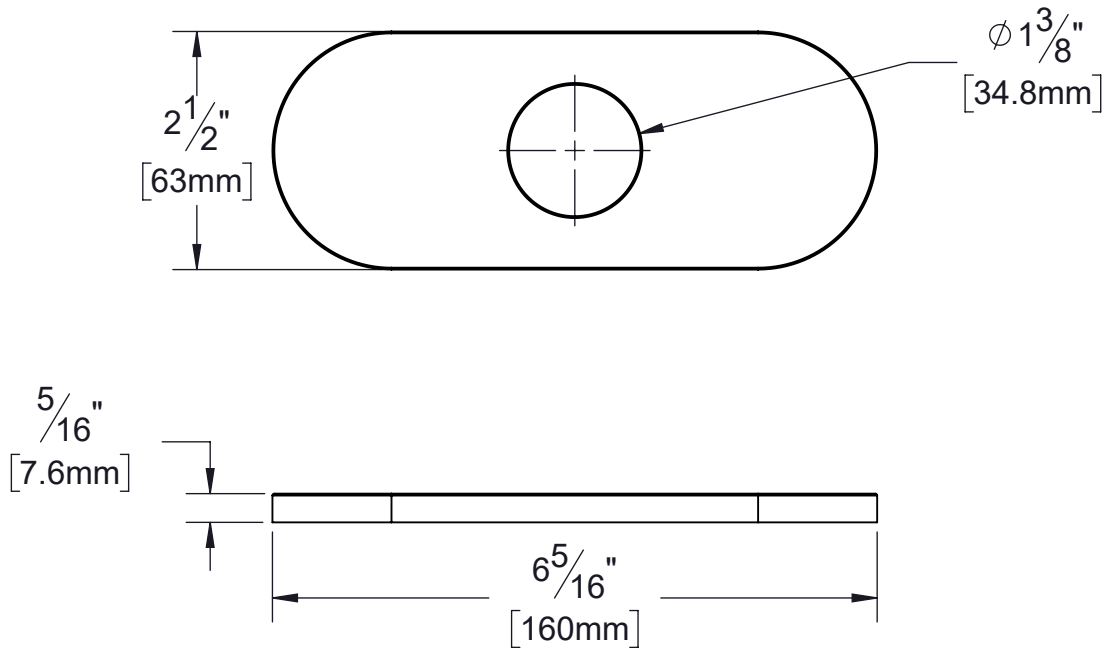


PRODUCT DATA SHEET

Product Description: Bathroom faucet installation deckplate, 6 1/4" long, radius ends. Covers pre-existing centerset faucet holes. Fabricated from stainless steel with US19 matte black finish.



Overall Size: 6 1/4" W X 5/16" H X 2 1/2" D

Material: Stainless Steel

Finish: US19 Matte Black

Cross Reference

Manufacturer	Part Number



Description:

**Bathroom Faucet Installation
Deckplate, Radius Ends,
Stainless Steel, 6 1/4" Long**

Part Number:

BFDPR19

Date

02/23

Rev.

00

Sheet 1 of 1