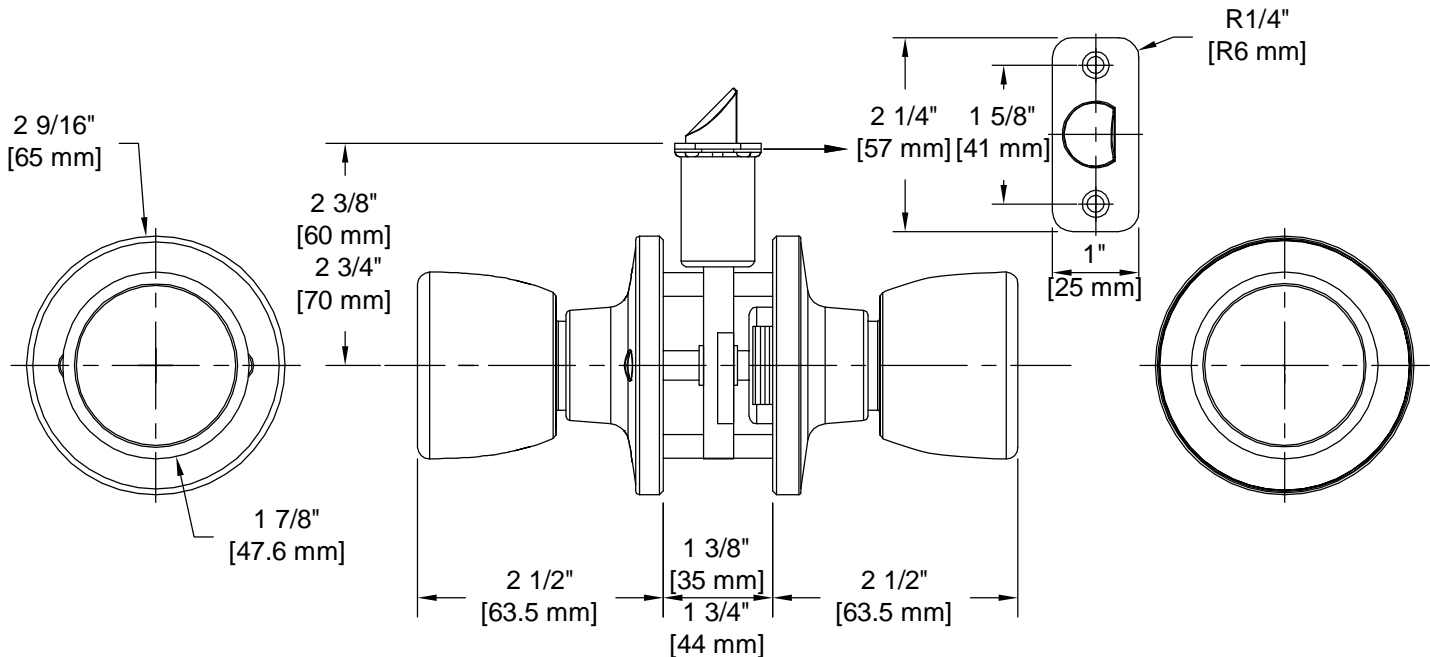


# PRODUCT DATA SHEET

**Product Description:** Passage door knob, ANSI Grade 3. Fabricated from brass with a US15 satin nickel finish. Both knobs are always free. Ships with mounting hardware. Lock ships with mortise latch. Optional drive in latch (product #87394) and UL10C fire rated latch (product #87373) available.



**Door Prep:** Cross Bore 2 1/8", Edge Bore 1", Mortise Latch Face 1" x 2 1/4", Optional Drive In Latch 1" Diameter Drilled Hole

**Latches:** Ships With Mortise Latch As Shown Above. Optional Drive In Or UL10C Fire Rated Latches Available

**Backset:** Adjustable Latch to 2 3/8" or 2 3/4"

**Door Thickness:** Fit all 1 3/8" - 1 3/4" Standard Doors

**Strike Plate:** 2 1/4" Full Lip Strike

**Bolt:** 1/2" Throw



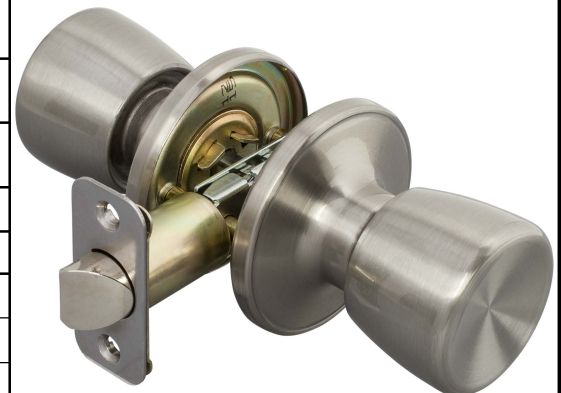
**Overall Size:** 2 9/16" W X 2 9/16" H X 2 1/2" D

**Material:** Brass

**Finish:** US15 Satin Nickel

## Cross Reference

Manufacturer	Part Number



Description:

**Lock Knob, Passage,  
Emerson, ANSI Grade 3**

Part Number:

**87702**

Date

09/16

Rev.

03

Sheet 1 of 1