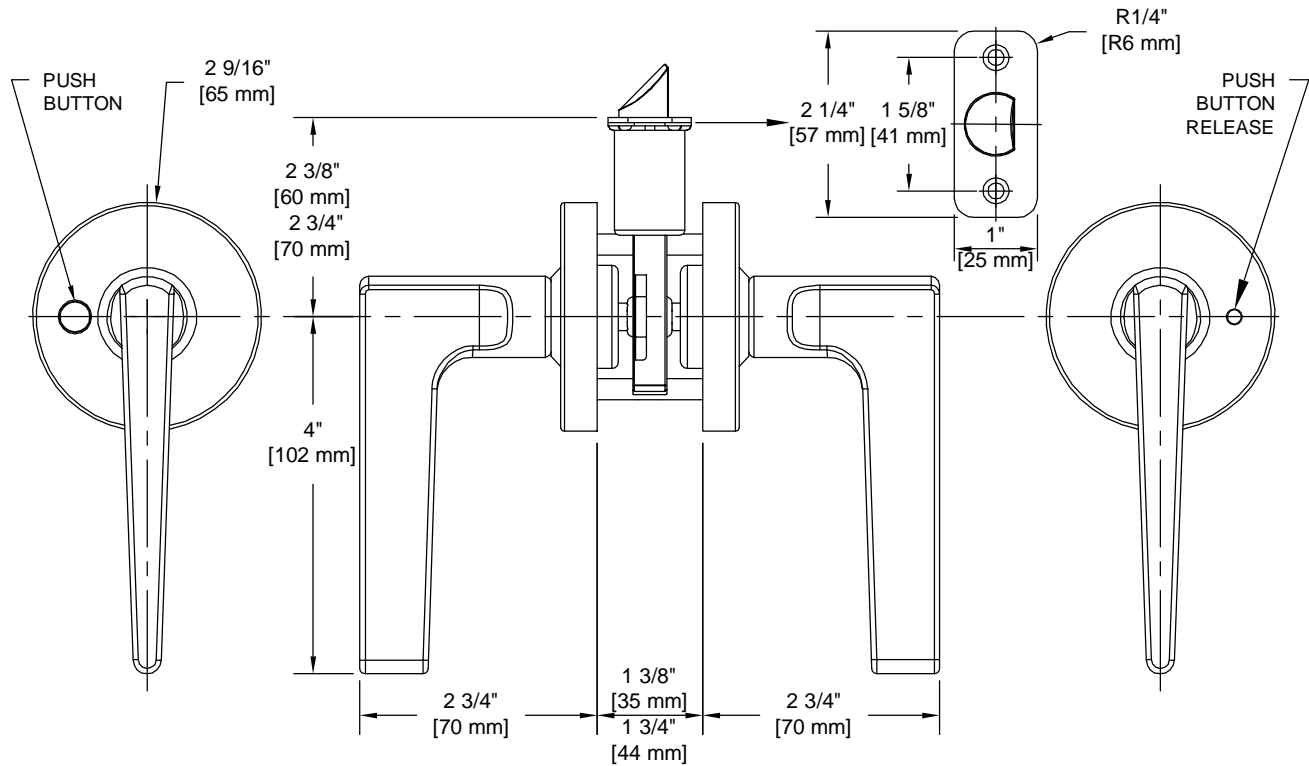


# PRODUCT DATA SHEET

**Product Description:** Privacy lever, reversible. Fabricated from die cast zinc with a Venetian bronze finish. Locked or unlocked by emergency key outside or push button inside. Ships with mounting hardware. Lock ships with mortise latch. Optional drive in and UL10C fire rated latches available.



**Door Prep:** Cross Bore 2 1/8", Edge Bore 1", Mortise Latch Face 1"x 2 1/4", Optional Drive In Latch 1" Diameter Drilled Hole

**Latches:** Ships With Mortise Latch As Shown Above. Optional Drive In Or UL10C Fire Rated Latches Available

**Backset:** Adjustable Latch to 2 3/8" or 2 3/4"

**Door Thickness:** Fit all 1 3/8" - 1 3/4" Standard Doors

**Strike Plate:** 2 1/4" Full Lip Strike

**Bolt:** 1/2" Throw



**Overall Size:** 4" W X 2 9/16" H X 2 3/4" D

**Material:** Die Cast Zinc

**Finish:** Venetian Bronze

## Cross Reference

Manufacturer	Part Number



Description:

**Privacy Lever, Reversible,  
Ella, ANSI Grade 3**

Part Number:

**87620**

Date

09/16

Rev.

03

Sheet 1 of 1