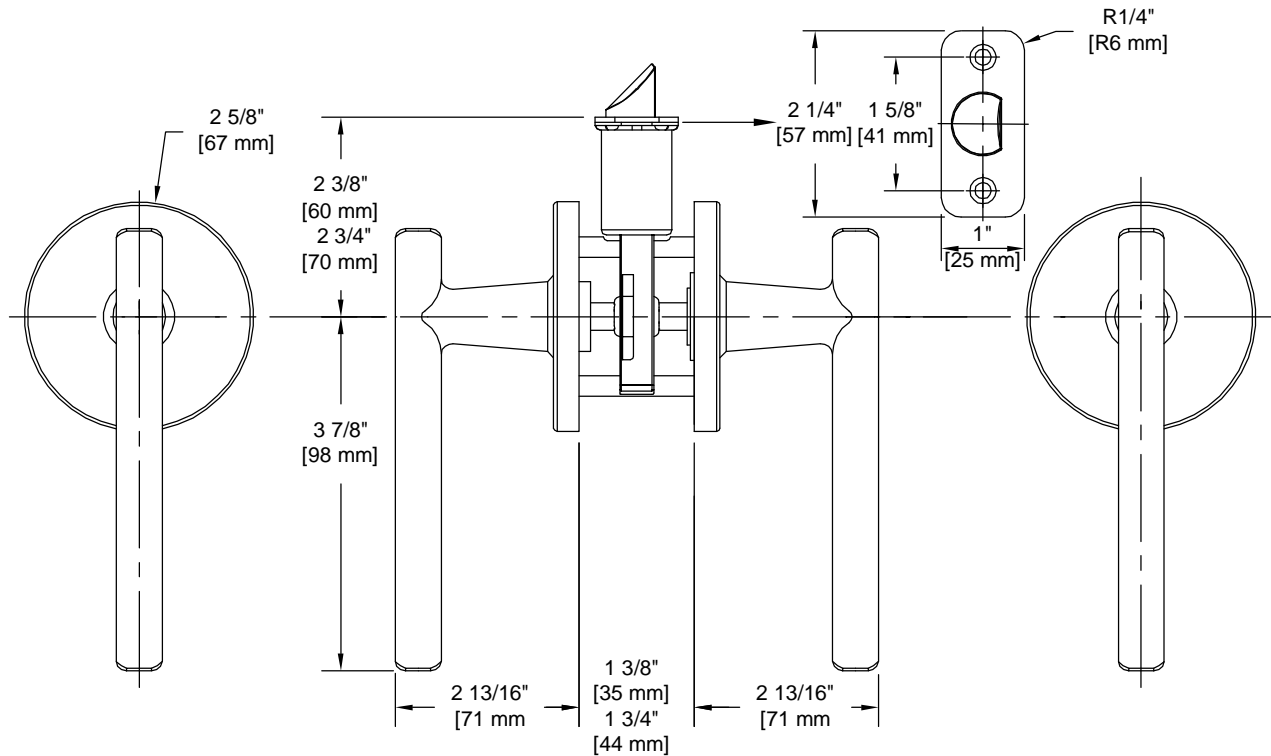


PRODUCT DATA SHEET

Product Description: Passage lever, reversible, ANSI Grade 3. Fabricated from die cast zinc with a US26 bright chrome satin nickel finish. Both levers are always free. Ships with mounting hardware. Lock ships with mortise latch. Optional drive in latch (product #87398) available.



Door Prep: Cross Bore 2 1/8\", Edge Bore 1\", Mortise Latch Face 1\" x 2 1/4\", Optional Drive In Latch 1\" Diameter Drilled Hole

Latches: Ships With Mortise Latch As Shown Above. Optional Drive In Latch Available

Backset: Adjustable Latch to 2 3/8\" or 2 3/4\"

Door Thickness: Fit all 1 3/8\" - 1 3/4\" Standard Doors

Strike Plate: 2 1/4\" Full Lip Strike

Bolt: 1/2\" Throw



Overall Size: 5 1/4\" W X 2 5/8\" H X 2 13/16\" D

Material: Die Cast Zinc

Finish: US26 Bright Chrome

Cross Reference

Manufacturer	Part Number



Description:

**Passage Lever, Reversible,
Riley, ANSI Grade 3**

Part Number:

87604

Date

06/22

Rev.

04

Sheet 1 of 1