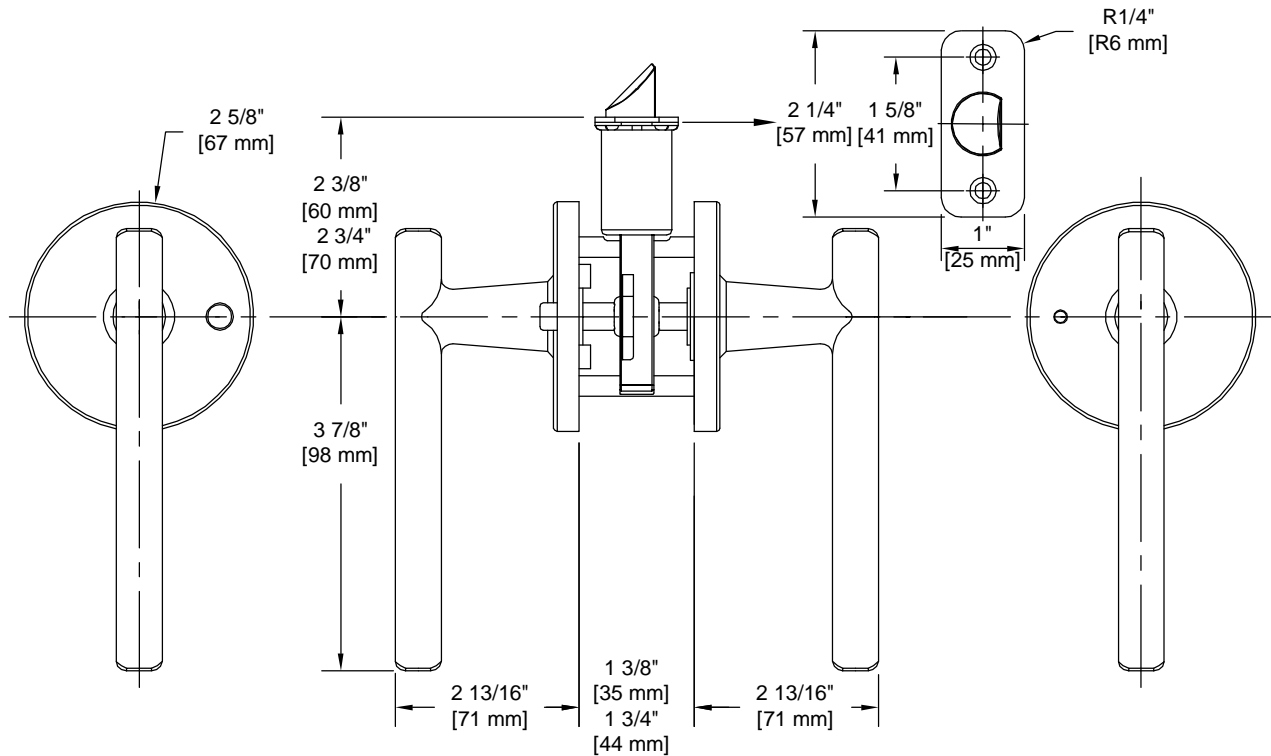


# PRODUCT DATA SHEET

**Product Description:** Privacy lever, reversible. Fabricated from die cast zinc with a US11P Venetian bronze finish. Locked or unlocked by a push button inside. Ships with mounting hardware. Lock ships with mortise latch. Optional drive in and UL10C fire rated latches available.



**Door Prep:** Cross Bore 2 1/8", Edge Bore 1", Mortise Latch Face 1"x 2 1/4", Optional Drive In Latch 1" Diameter Drilled Hole

**Latches:** Ships With Mortise Latch As Shown Above. Optional Drive In Or UL10C Fire Rated Latches Available

**Backset:** Adjustable Latch to 2 3/8" or 2 3/4"

**Door Thickness:** Fit all 1 3/8" - 1 3/4" Standard Doors

**Strike Plate:** 2 1/4" Full Lip Strike

**Bolt:** 1/2" Throw



**Overall Size:** 5 1/4" W X 2 5/8" H X 2 13/16" D

**Material:** Die Cast Zinc

**Finish:** US11P Venetian Bronze

## Cross Reference

Manufacturer	Part Number



Description:

**Privacy Lever, Reversible,  
Riley, ANSI Grade 3**

Part Number:

**87387**

Date

06/16

Rev.

01

Sheet 1 of 1