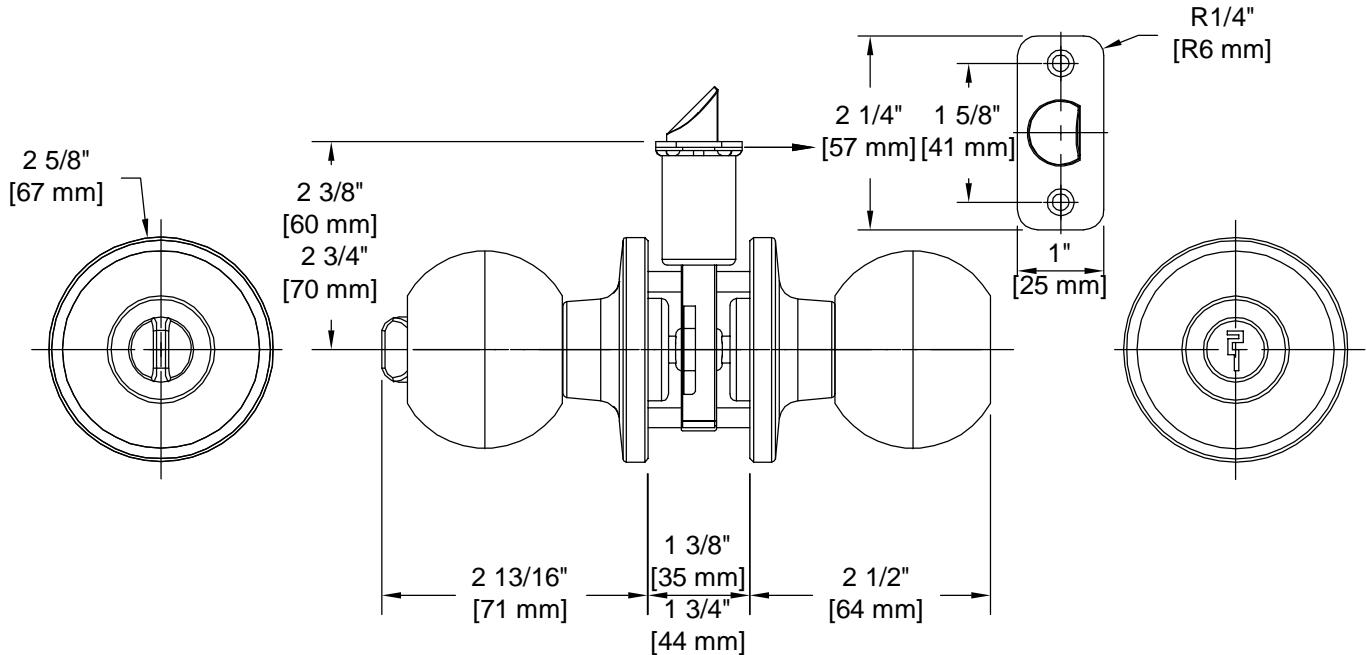


PRODUCT DATA SHEET

Product Description: Entry lock knob. ANSI Grade 3 with a Kwikset KW 1 Keyway. Fabricated from brass with a US11P venetian bronze finish. Locked or unlocked by key outside or turn button inside. Ships with mounting hardware. Lock ships with mortise latch. Optional drive in latch (product #87392) and UL10C fire rated latch (product #87371) available.



Door Prep: Cross Bore 2 1/8", Edge Bore 1", Mortise Latch Face 1"x 2 1/4", Optional Drive In Latch 1" Diameter Drilled Hole

Latches: Ships With Mortise Latch As Shown Above. Optional Drive In Or UL10C Fire Rated Latches Available

Backset: Adjustable Latch to 2 3/8" or 2 3/4"

Door Thickness: Fit all 1 3/8" - 1 3/4" Standard Doors

Cylinder: Brass with 5 Pin Tumbler Kwikset KW 1 Keyway

Strike Plate: 2 1/4" Full Lip Strike

Bolt: 1/2" Throw

REKEY OPTIONAL

Optional  Latch Available

ANSI 3

KW1 KEYWAY

Overall Size: 2 5/8" W X 2 5/8" H X 2 13/16" D

Material: Brass

Finish: Venetian Bronze

Cross Reference

Manufacturer	Part Number



H Harney
HARDWARE

Description:

**Lock Knob, Entry,
Addison, KW1, ANSI
Grade 3**

Part Number:

87353

Date

09/16

Rev.

03

Sheet 1 of 1