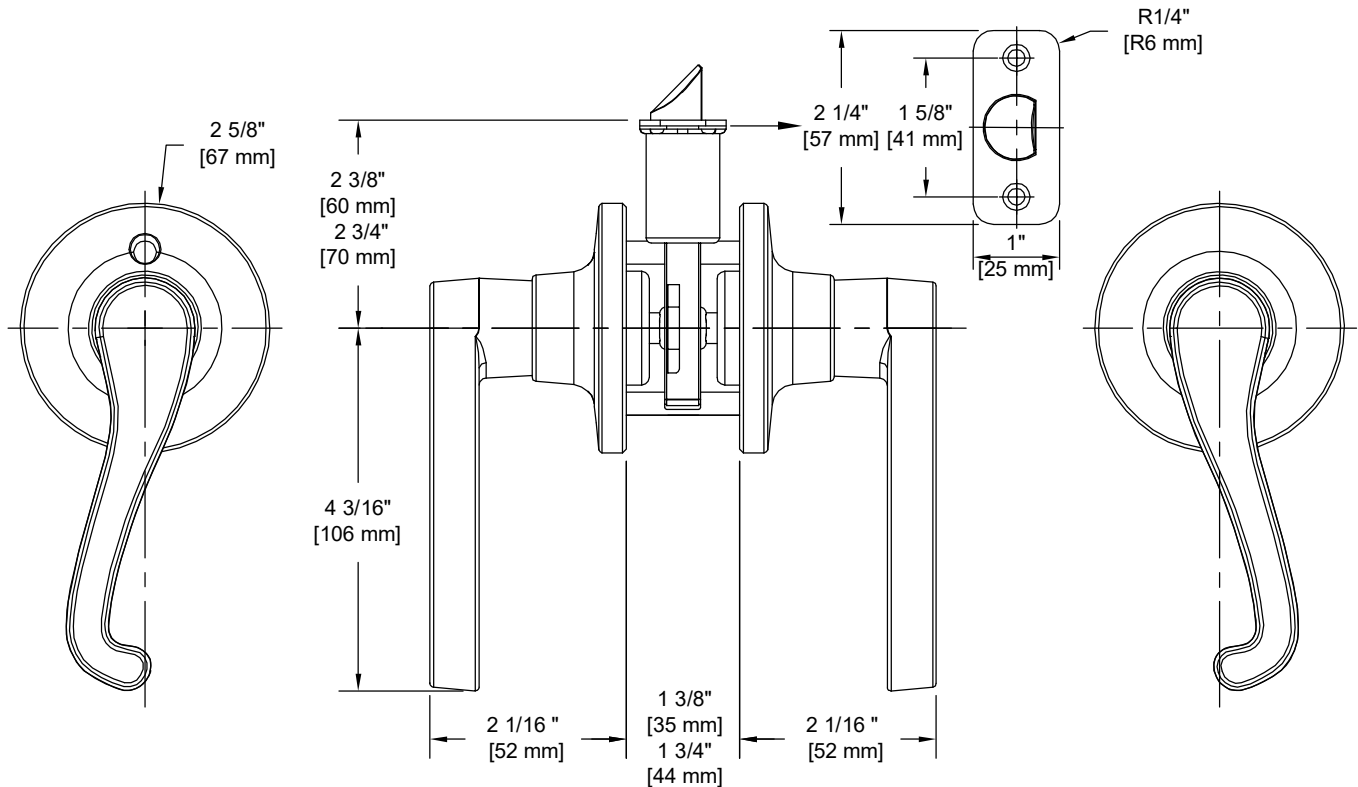


# PRODUCT DATA SHEET

**Product Description:** Passage door lever, reversible. ANSI Grade 3. Fabricated from zinc with a US15 satin nickel finish. Both levers are always free. Ships with mounting hardware. Lock ships with mortise latch. Optional drive in latch (product #87394) and UL10C fire rated latch (product #87373) available.



**Door Prep:** Cross Bore 2 1/8", Edge Bore 1", Mortise Latch Face 1" x 2 1/4", Optional Drive In Latch 1" Diameter Drilled Hole

**Latches:** Ships With Mortise Latch As Shown Above. Optional Drive In Or UL10C Fire Rated Latches Available

**Backset:** Adjustable Latch to 2 3/8" or 2 3/4"

**Door Thickness:** Fit all 1 3/8" - 1 3/4" Standard Doors

**Strike Plate:** 2 1/4" Full Lip Strike

**Bolt:** 1/2" Throw



**Overall Size:** 5 1/2" W X 2 5/8" H X 2 5/16" D

**Material:** Zinc

**Finish:** US15 Satin Nickel

## Cross Reference

| Manufacturer | Part Number |
|--------------|-------------|
|              |             |
|              |             |
|              |             |



Description:

**Passage Lever, Reversible,  
Sage, ANSI Grade 3**

Part Number:

**87336**

Date

09/16

Rev.

03

Sheet 1 of 1