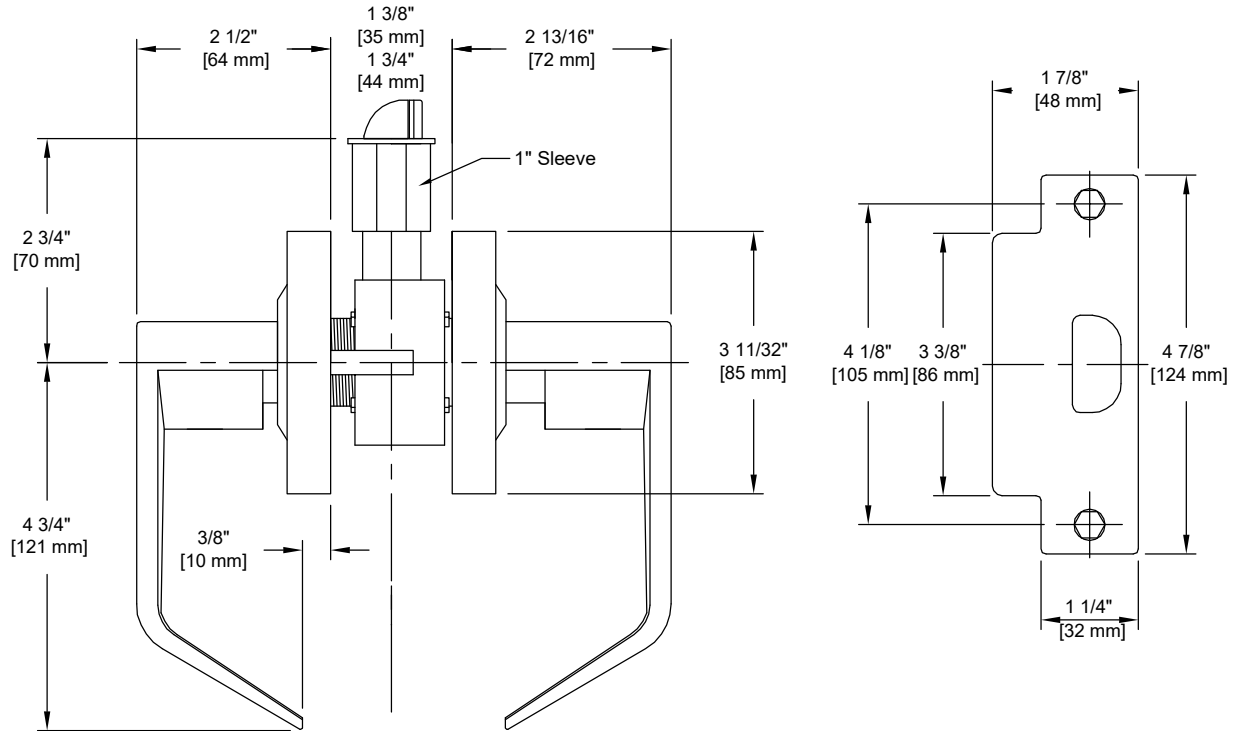


PRODUCT DATA SHEET

Product Description: Lock lever, storeroom, reversible, Schlage "SC 4 Keyway", ANSI Grade 2. Removable, non interchangeable core. Handles are fabricated from zinc and escutcheon is fabricated from stainless steel in a US26D satin chrome finish. The outside lever is always locked, entrance by key only. The inside lever is always unlocked providing emergency exit. Full length lever handle with 3/8" return. Free wheeling clutch design. ADA compliant. UL10C 3 hour fire rated. Ships with mounting hardware. 2 3/8" latch (product #CL60MM) sold separately.



Door Prep: Cross Bore 2 1/8", Edge Bore 1", Latch Face 1 1/8" x 2 1/4"

Backset: 2 3/4"

Door Thickness: Standard Doors 1 3/8" to 1 3/4"

Cylinder: 6-Pin Removable Core

Strike Plate: 4 7/8", 3 3/8" Lip Strike

Bolt: 1/2" Throw, Stainless Steel

ANSI/BHMA: A156.2 Grade 2

REKEY OPTIONAL



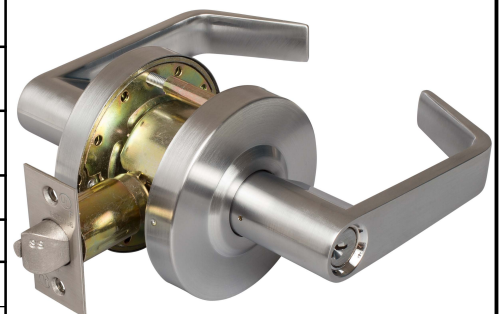
Overall Size: 6 13/32" W X 3 11/32" H X 2 13/16" D

Material: Zinc Handles, Stainless Steel Escutcheon

Finish: US26D Satin Chrome

Cross Reference

Manufacturer	Part Number
CalRoyal	XP05



Description:

**Lock Lever, Storeroom, Reversible,
SAT Style Handle, Schlage "SC 4",
UL 10C, ANSI Grade 2**

Part Number:

86503

Date

10/23

Rev.

05

Sheet 1 of 1