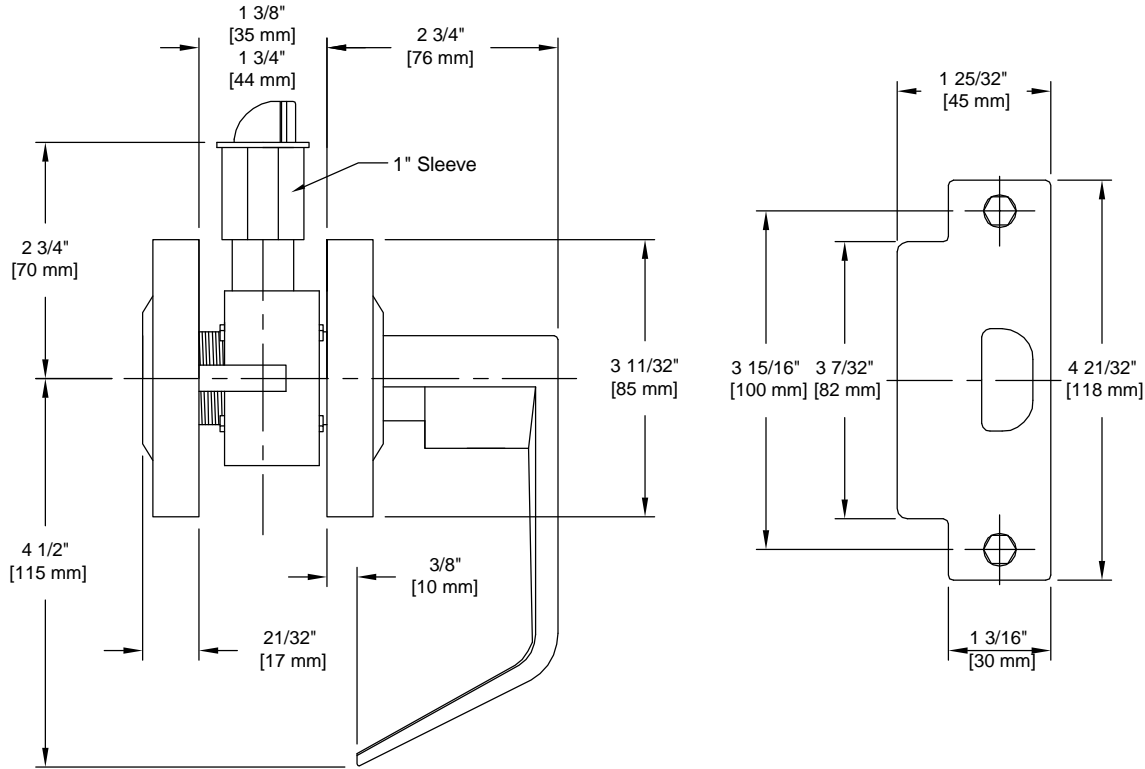


# PRODUCT DATA SHEET

**Product Description:** ANSI Grade 2 commercial door exit lock. Removable, non-interchangeable core. Handle is fabricated from zinc and escutcheon is fabricated from stainless steel in a US26D satin chrome finish. There is no outside lever. The inside lever is always unlocked providing emergency exit. Full length lever handle with 3/8" return. ADA compliant. UL10C 3 hour fire rated. Ships with mounting hardware. 2 3/8" latch (product #CL60MM) sold separately.



**Door Prep:** Cross Bore 2 1/8", Edge Bore 1", Latch Face 1 1/8" x 2 1/4"

**Backset:** 2 3/4"

**Door Thickness:** Standard Doors 1 3/8" to 1 3/4"

**Strike Plate:** 4 7/8", 3 3/8" Lip Strike

**Bolt:** 1/2" Throw, Stainless Steel

**ANSI/BHMA:** A156.2 Grade 2



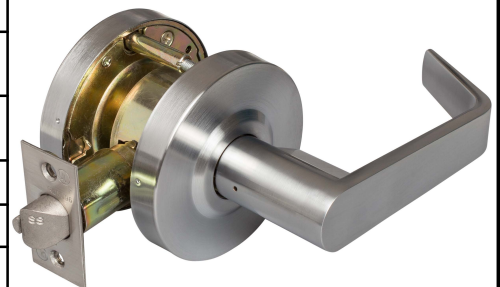
**Overall Size:** 5 3/16" W X 3 11/32" H X 2 3/4" D

**Material:** Zinc Handles, Stainless Steel Escutcheon

**Finish:** US26D Satin Chrome

## Cross Reference

Manufacturer	Part Number



Description:

**Lock Lever, Exit /Connecting  
RM, SAT Style Handle, UL10C,  
ANSI Grade 2**

Part Number:

**86499**

Date

**06/16**

Rev.

**04**

Sheet 1 of 1