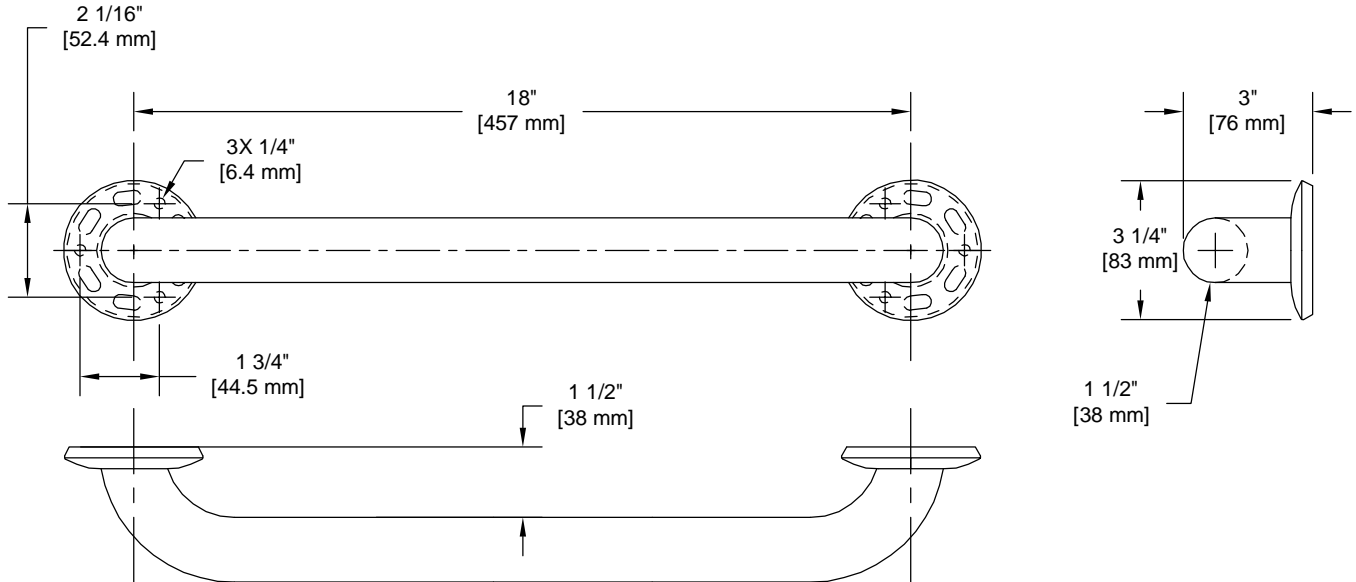


# PRODUCT DATA SHEET

**Product Description:** Stainless steel grab bar. 18" grab bar with 1 1/2" diameter tube. Fabricated from 18-gauge, type 304 grade stainless steel with a powder coated white finish. Welded, type 304 stainless steel mounting flanges. ADA compliant and designed to support loads in excess of 250 lbs when properly installed. Ships with mounting hardware.



**Overall Size:** 21 1/4" W X 3 1/4" H X 3" D

**Material:** 304 Grade Stainless Steel

**Finish:** Powder Coated White

## Cross Reference

Manufacturer	Part Number



Description:

**Grab Bar, 18" Concealed Screw**

Part Number:

**72571**

Date

**09/16**

Rev.

**06**

Sheet 1 of 1